



Electronic Data Solutions

- Specializing in mobile computing and field data collection applications for 23 years
- Home Office in Jerome, Idaho
- 23 Employees with eight sales field offices in the Western U. S. providing regional coverage.



Proud to Represent Industry Leaders

Water Markets:

Distribution Sales with Main Emphasis
in Western U. S.

- ***In-Situ, Inc.*** Water Level and Water Quality Instrumentation
- ***Teledyne ISCO*** Water Samplers & Flow Meters
- ***Seveno DataSight*** Database for Environmental Data
- ***Teledyne RDI*** Acoustic Doppler Flow Meters
- ***Campbell Scientific*** Dataloggers & Telemetry Systems
- System Integration Services for
Real-time Data Collection



Proud to Represent Industry Leaders

GPS/GIS Markets:
Integrated Mobile Computing systems:

- **Trimble** GPS for Mapping & GIS
- **LaserTech & LaserCraft** Rangefinders
- **ESRI** Business Partner & Developer
- **Juniper Systems** Field Computers



Recent Awards



- Partner of the Year for Trimble MGIS – 2005, 2007, **2008**
- North American Dealer of the Year for Trimble Mapping/GIS Division – 2002, 2003, 2004
- Outstanding Trimble GPS Worldwide Customer Support, Service & Training Award – 2006, 2007, **2008**
- ESRI Business Partner of the Year – 2006
- Dealer of the Year for Laser Technology – 2006, 2007
- In-Situ Top Sales Representative – 2007, **2008**
- Winner of Teledyne ISCO Percentage Above Quota -2006
- North American Dealer of the Year for Juniper Systems Field Computers – 2002, 2003, 2004, 2005, 2006



ArcPad Training

ArcPad 7 Training - <http://www.elecdata.com/training.html>

Schedule a training at your facility

Topics Covered:

- Any GPS platform running ArcPad is welcome
- GPS Fundamentals
- Geodatabase Fundamentals
- 7 Steps to a Successful Project
- Create Personal Geodatabase, Prepare in ArcMap, Get Data for ArcPad
- Field Data Collection and Update
- Processing GPS Data – GPSCorrect, GPS Analyst, Pathfinder Office



DataLink GIS

- Automates data transfer between multiple field devices
- Drop the field device in its cradle and DataLink takes over from there.
- Synchronize data from ArcPad and other applications
- With Pathfinder Office 3.0 or higher, automate post-processing of ArcPad and GPSCorrect data
- Merges processed shapefiles automatically.



Custom Software

If you want customized software for your particular needs, don't hesitate to contact us!

- Custom ArcPad Form Development
- Custom Software Development for Windows CE field devices and Windows desktop software



Trimble Yuma rugged tablet computer



- Highly-integrated, ultra rugged tablet computer
- Water Proof (IP67 rating)
- Windows 7 OS
- Intel Atom 1.6GHz processor
- All-in-one solution with integrated
 - GPS
 - Bluetooth
 - WiFi
 - 2 digital cameras

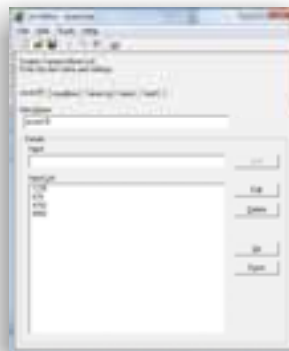


Geo-Imaging The Data Part

On-board Data Dictionary



- Tags images with attribute data
- 10 data fields with 50 items each
- Unlimited number of dictionaries
- Easy-to-use 'drop-down' interface
- On-board keypad for dynamic entry



- Simple interface for creating files
- List Editor simplifies file creation
- Optional Excel Spreadsheets tool
- File are simply delimited text files
- Files reside on camera SD card



- Data is stored in the image EXIF header
- Data is appended to the attribute table in GIS
- Optional Excel Spreadsheets tool
- File are simply delimited text files
- Files reside on camera SD card

ID	Image	CLIENT NAME	STATUS	DATE	TIME	LOCATION	DESCRIPTION
1	Photo1	Photo1	Photo1	12/1/01	12:12:01	Photo1	Photo1
2	Photo2	Photo2	Photo2	12/1/01	12:12:01	Photo2	Photo2
3	Photo3	Photo3	Photo3	12/1/01	12:12:01	Photo3	Photo3
4	Photo4	Photo4	Photo4	12/1/01	12:12:01	Photo4	Photo4
5	Photo5	Photo5	Photo5	12/1/01	12:12:01	Photo5	Photo5
6	Photo6	Photo6	Photo6	12/1/01	12:12:01	Photo6	Photo6
7	Photo7	Photo7	Photo7	12/1/01	12:12:01	Photo7	Photo7
8	Photo8	Photo8	Photo8	12/1/01	12:12:01	Photo8	Photo8
9	Photo9	Photo9	Photo9	12/1/01	12:12:01	Photo9	Photo9
10	Photo10	Photo10	Photo10	12/1/01	12:12:01	Photo10	Photo10



Thank You