

# 2010 ESRI California/Hawaii/Nevada Regional User Group Conference

## “Designing our Future”

### NorthSouth GIS LLC

Daniel Elroi  
President



# The NorthSouth GIS Group



## NorthSouth GIS (India) Pvt. Ltd.

Plot No. 13, Mourya's Enclave,  
Gachibowli Village,  
Seri Lingampally Md & Municipality,  
Ranga Reddy Dist. Hyderabad-32  
INDIA

Tel: +91 40 64626866/77  
Fax: +91 40 23002324  
Website: [www.nsgindia.co.in](http://www.nsgindia.co.in)  
Email: [info@nsgindia.co.in](mailto:info@nsgindia.co.in)

## NorthSouth GIS LLC

312 E. First Street, Suite 330  
Los Angeles, CA 90012  
USA

Tel (US): +1 800 866 5013  
Tel (Int'l): +1 310 606 2783  
Fax: +1 866 378 5877  
Website: [www.northsouthgis.com](http://www.northsouthgis.com)  
Email: [info@northsouthgis.com](mailto:info@northsouthgis.com)



## Explorer Graphics Ltd.

PO Box 58031  
Geographic Information Centre  
Discovery Drive,  
Whitby, Porirua  
NEW ZEALAND

Tel : +64 4 234 7832  
Fax: +64 4 234 7863  
Website: [www.egl.co.nz](http://www.egl.co.nz)  
Email: [explorer@egl.co.nz](mailto:explorer@egl.co.nz)



# NSG Services

- **PLANNING:** Strategy and Implementation, Needs Assessments, Budgeting
- **DESIGN AND IMPLEMENTATION:** HW, SW, Networking, Database, Security
- **SYSTEMS INTEGRATION:** Database (SQL, Oracle), .Net, Web Services, REST
- **APPLICATION DEVELOPMENT:** Web, Desktop, Mobile
- **AUDITS:** System “health checks”
- **HOSTED SERVICES:** ASP/SaaS GIS web hosting
- **TRAINING:** ESRI taught and custom training classes



# NSG Strategic Services

Existing implementation assessment and integration with client's overall IT strategy

Advice as to how new ESRI ELA software can contribute and support the client's business

Design, installation and implementation of enterprise GIS systems, e.g. ArcSDE®, ArcGIS® Server

Migration of data, systems, functionality, and skills (i.e. training)

Implementation of GIS on to the Web and expansion of Web GIS from Intranet to Internet

Promotion of GIS within and outside the organization





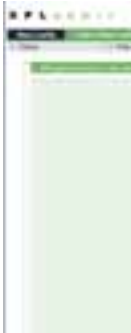
# NSG Markets

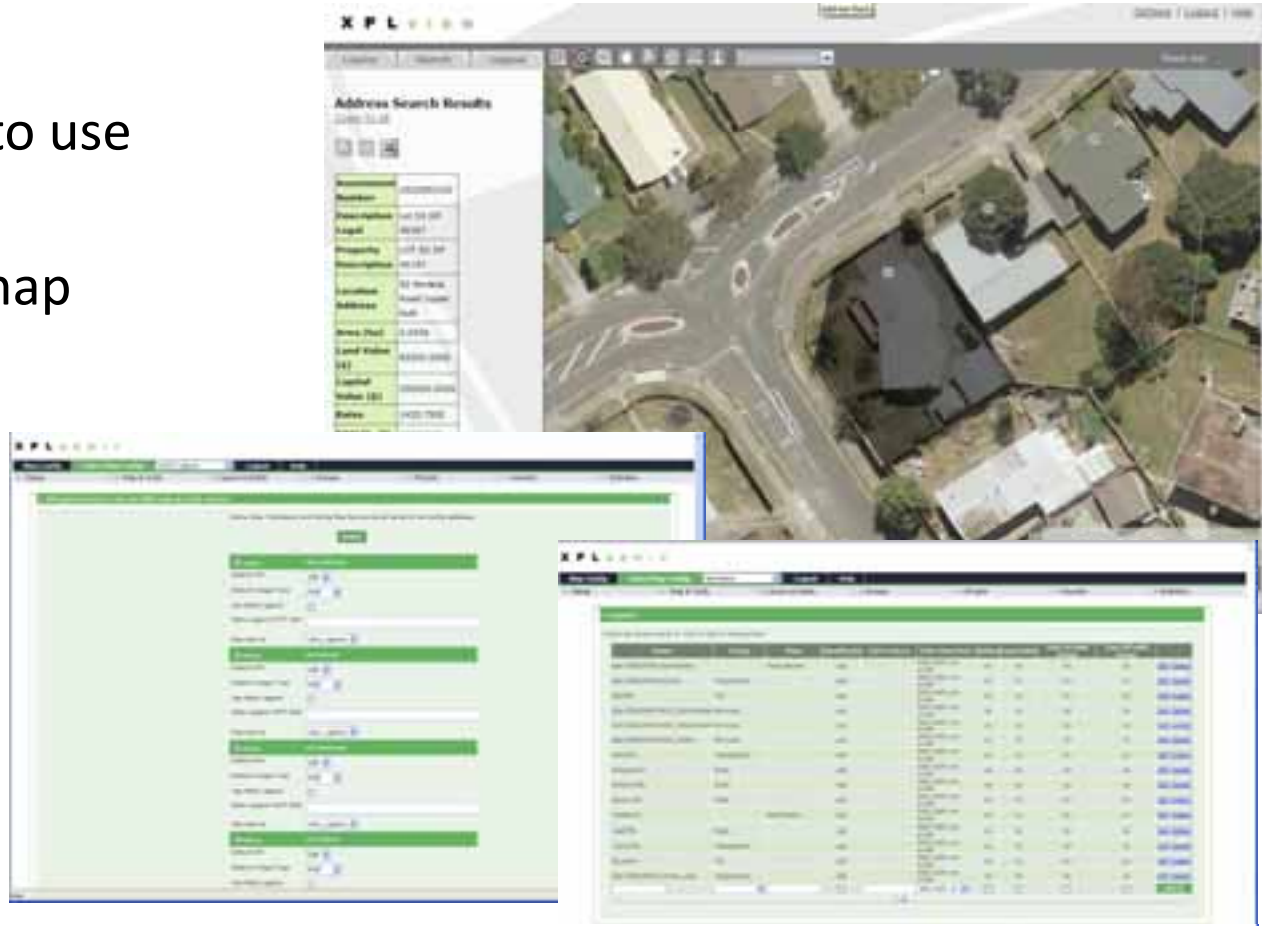
- Local Government
- Regional and National Governments
- Sea Ports
- Climate Change
- Environmental Protection
- Law Enforcement



# GIS Web Application Development for Local Government

- Intranet and Internet Application Framework

- ✓ Sophisticated but simple to use administration utility for the configuration of the map interface, data and functionality
  - ✓ Customizable high resolution scale printing
  - ✓ Spatial editing capability
- 
- A small screenshot of a web browser displaying a map. The map shows a city area with a green overlay, likely representing a specific land use or administrative boundary. The browser's address bar and some interface elements are visible at the top.





# NorthSouth GIS Case Studies





# Port of Los Angeles

## Geographic Information Systems (GIS) Consulting Services



## NorthSouth GIS – US Featured Case Study



# “GeoRSS” Data Feeds





# EGL Case Studies





## EGL New Zealand Featured Case Study



# Land Use and Carbon Analysis System - LUCAS

Land Use Classes include;

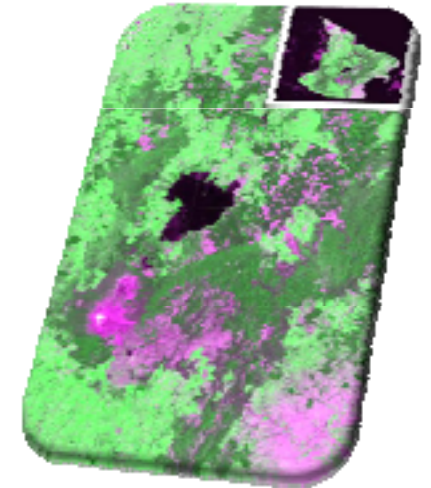
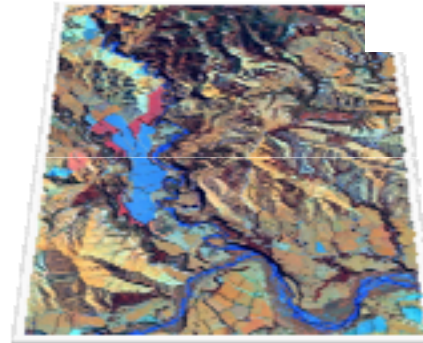
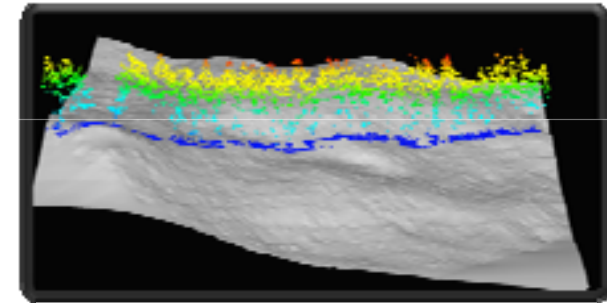
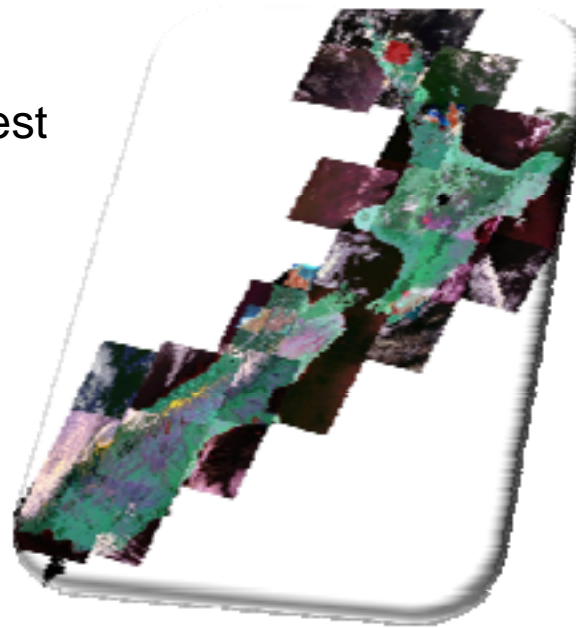
- Natural forest
- Pre 1990 and post 1990 planted forest
- Cropland, Grassland, Wetlands
- Settlements and Other land

LandSat 4 Satellite Imagery is the basis for 1990 mapping

SPOT 5 Satellite Imagery is the basis for 2008 Land Use Mapping and beyond

Airborne i.e. LiDAR and plot samples for privately owned forest mapping

MODIS satellite imagery is used to monitor annual forest changes i.e. Harvest and Deforestation





# NorthSouth GIS India (Pvt) Ltd Case Study



# Regional Organization for the Protection of the Marine Environment - Kuwait

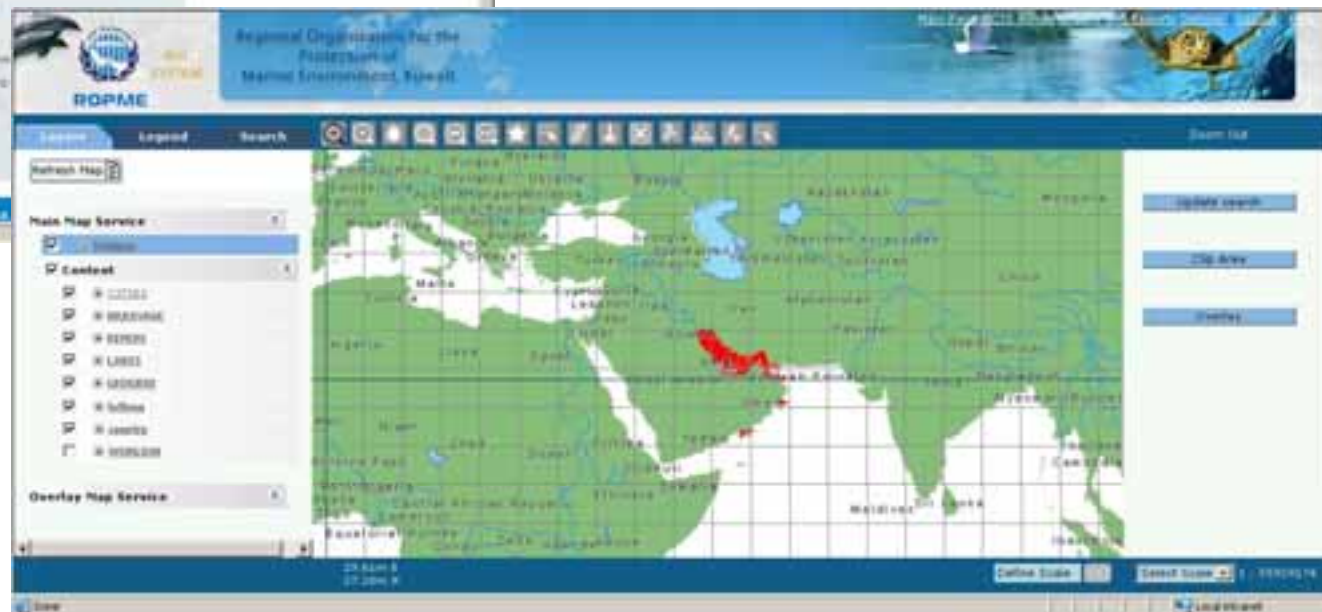


Dr. Abdul Kader Al-Sayid, Executive Secretary, Regional Organization for the Protection of the Marine Environment (ROPME)

The ROPME has been created eight states that joined forces in 1979 to adopt the Kuwait Regional Convention for Cooperation in the Protection of the Marine Environment from Pollution, otherwise known as the Kuwait Convention and four associated Protocols.

In the same year an Action Plan for the region was adopted covering programmes related to oil pollution, industrial wastes, sewage and marine resources. Projects range from coastal zone management, fisheries, public health, land-based pollution, sea-based pollution, hydrography, oceanography, marine emergencies, oil and remote sensing to environmental awareness and capacity building. A year later in 1980 the Regional Organization for the Protection of the Marine Environment (ROPME) was established.

Powered by NorthSouth GIS Studio Pub. 1.0.0



Web Based Environmental Information System

# Thank you

## GIS Solutions Expo

## Booth 9



**Daniel Elroi**

+1 310 606 2783

Or (800) 866 5013 ext 11

[daniel@northsouthgis.com](mailto:daniel@northsouthgis.com)