

Esri | California • Hawaii • Nevada
Regional User Group Conference

February 23–24, 2011 • Esri • Redlands, CA



ArcGIS 10 Productivity Tips & Tricks

Harry Moore IV

Chris Fox



Outline

- **ArcMap Basics**
- **Searching**
- **Editing**
- **Sharing**
- **Support Resources**

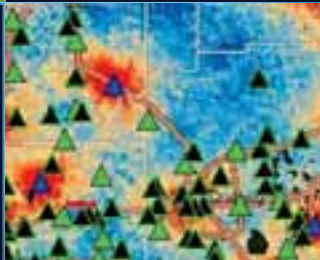
ArcMap Basics

ArcMap

- **Increase usability and work faster**
- **Many improvements to make you productive**
 - **Shy and stackable windows**
 - **Easy customization**
 - **New layer properties**

Fulton County Dept. of Health and Wellness

ArcMap Basics



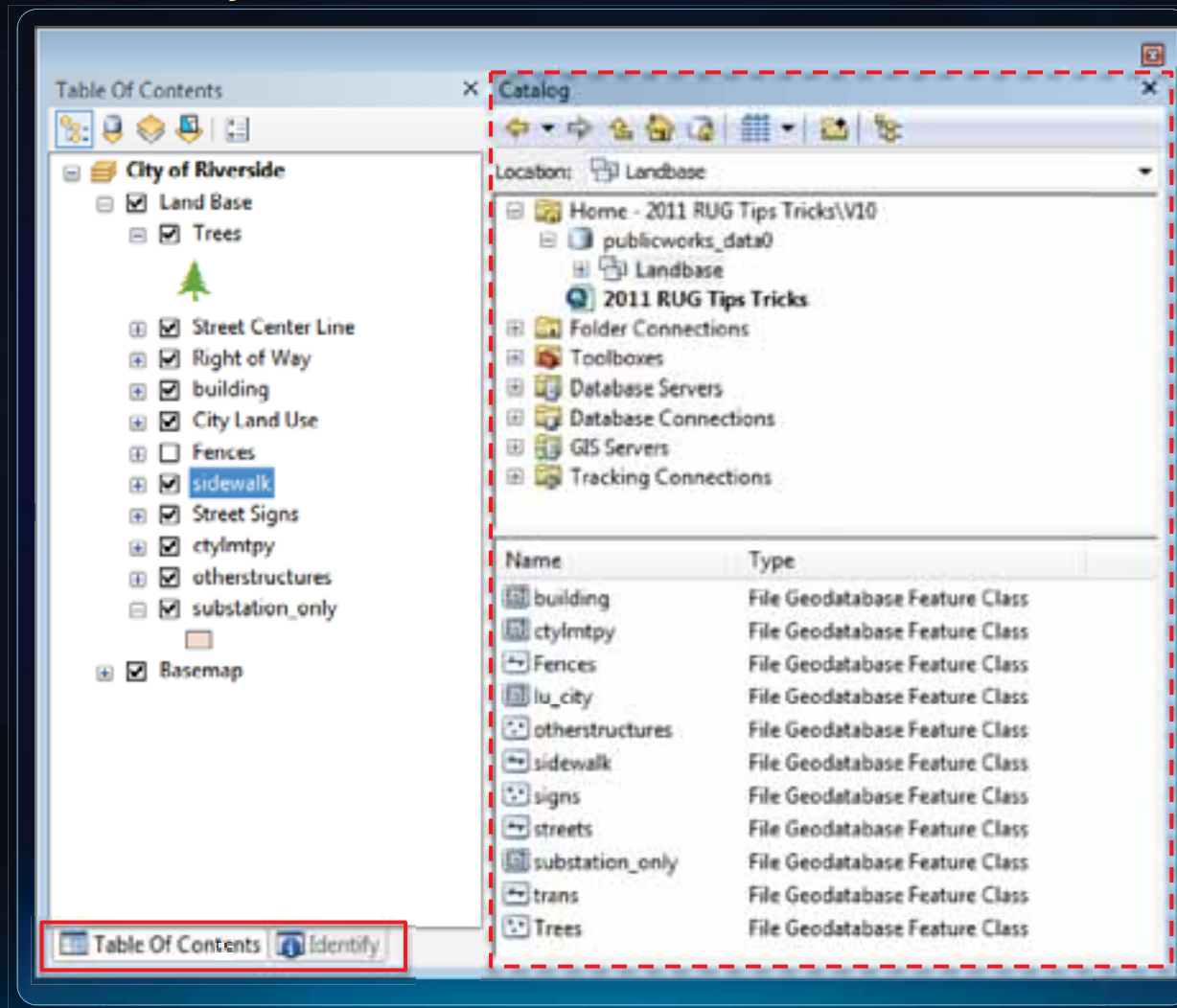
Windows

- **Double click top area of window to dock or float window**
- **ESC takes emphasis off of window**
- **Hover the mouse cursor over the blue arrows to place windows**



Windows

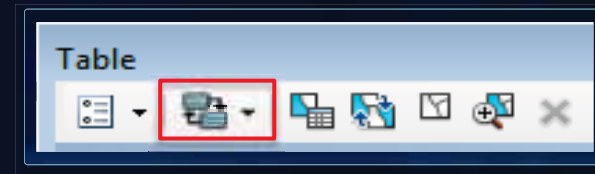
What works best for you?



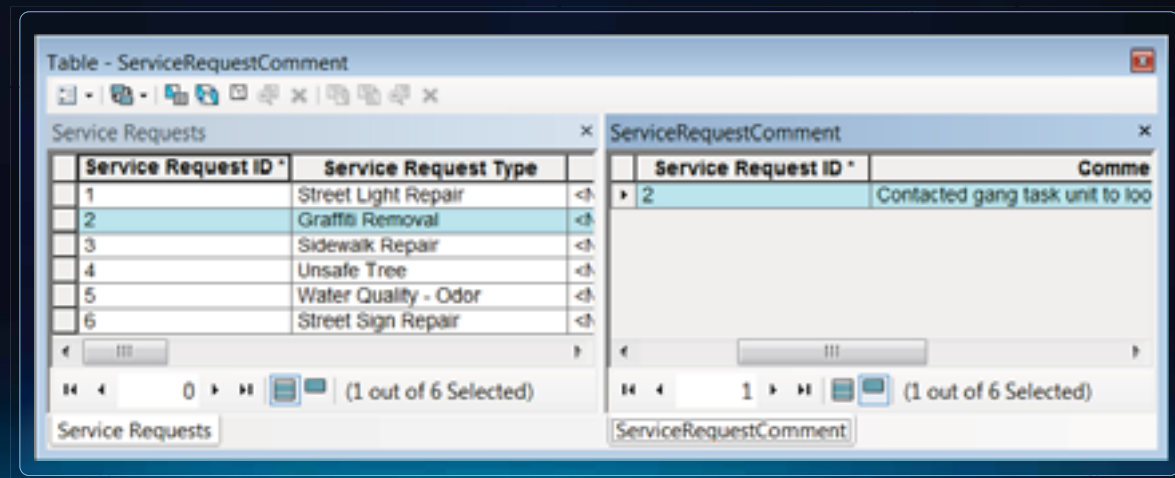
Attribute Tables

Related tables button

- Adds related data
 - Relationship class
 - Relate



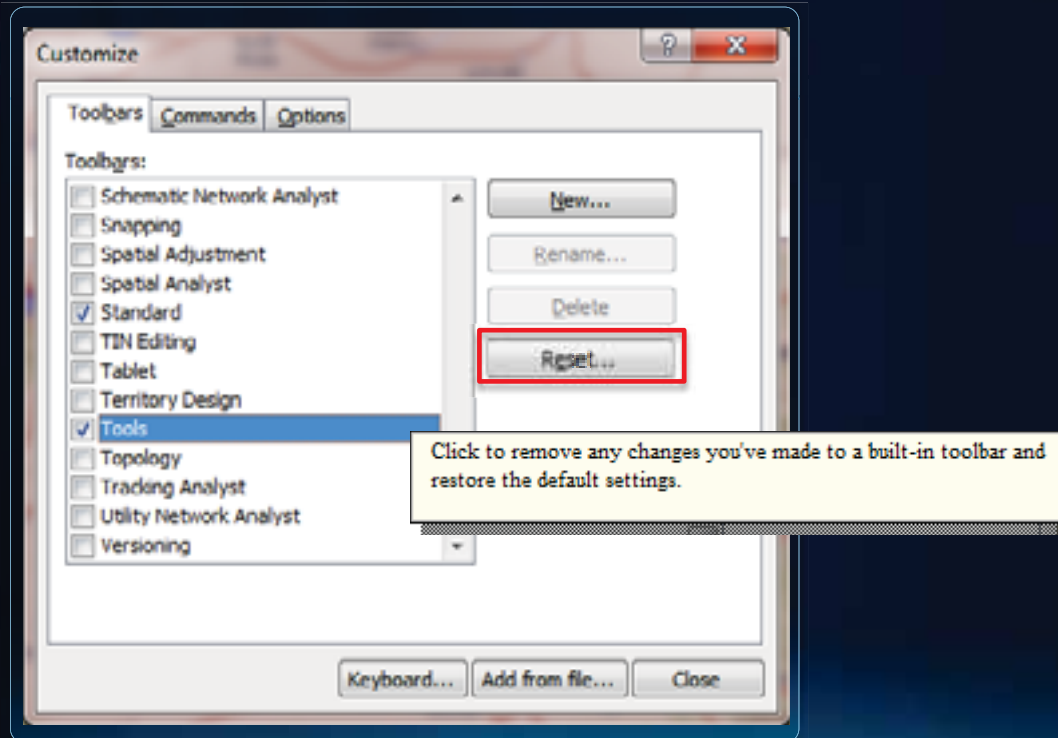
- Opens the attribute table
- Highlights the related records



Reset Toolbars

I accidentally removed a button!

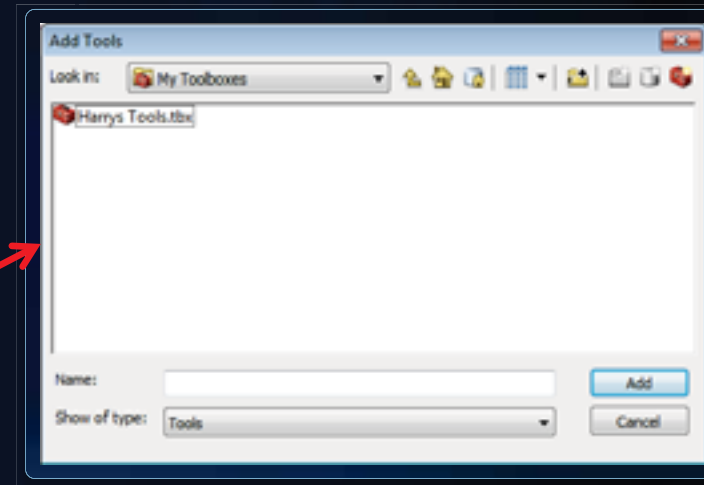
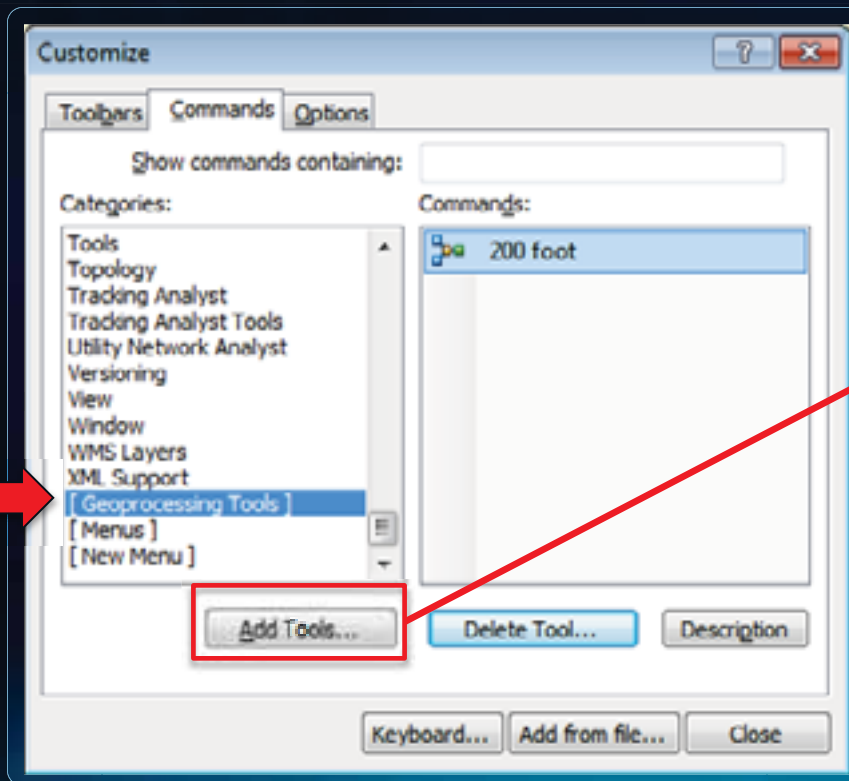
- **Customize dialog > Toolbars tab**
 - **Highlight tool then click Reset**



Add a Model to a Toolbar

Quickly run analysis

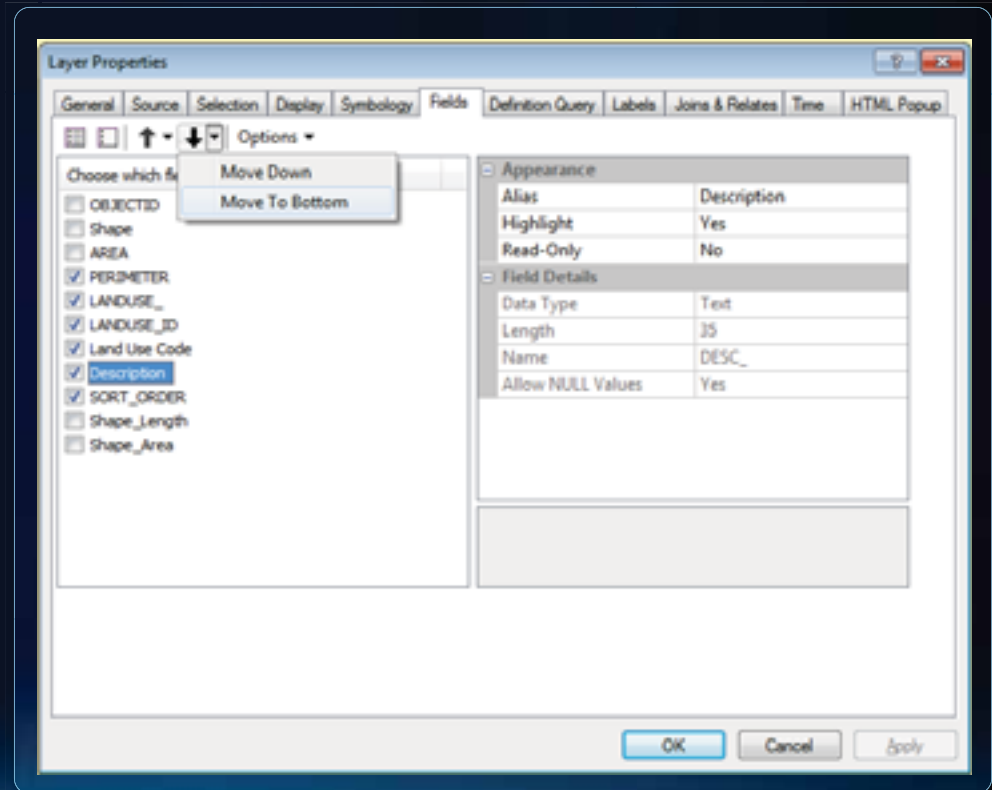
- ArcMap stores a reference to the tools location
- Delete or move tool and the button will not work



Layer Properties

Fields tab

- Field properties respected in:
 - Identify window
 - Attribute Table
 - Attribute window
- Highlight fields
- Reorder fields
- Make fields Read-Only



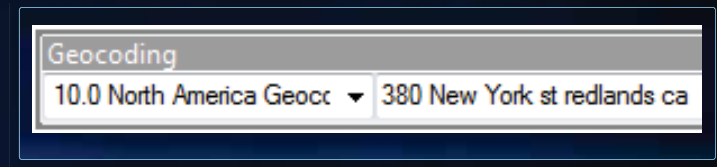
Geocoding Toolbar

Leveraging ArcGIS Online

- Address Inspector button
 - Press “L” key to get point graphic with label
 - Press “P” key to get a point graphic
 - Press “O” key to get a label



- Single line address search



- 9.3.1 users connect to:
<http://tasks.arcgisonline.com/ArcGIS/services> and add locator
- No need for address reference data or locator

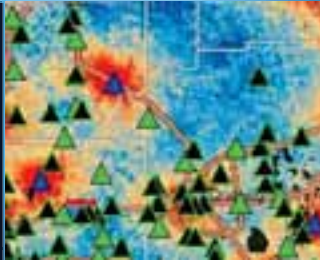
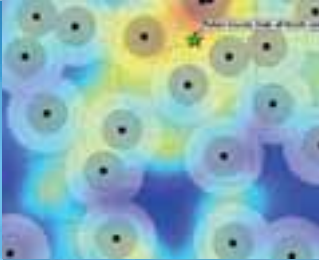
Searching

Searching

- **Saving time to find what you need**
- **Many improvements to make you productive**
 - **Search window**
 - **Symbol search**

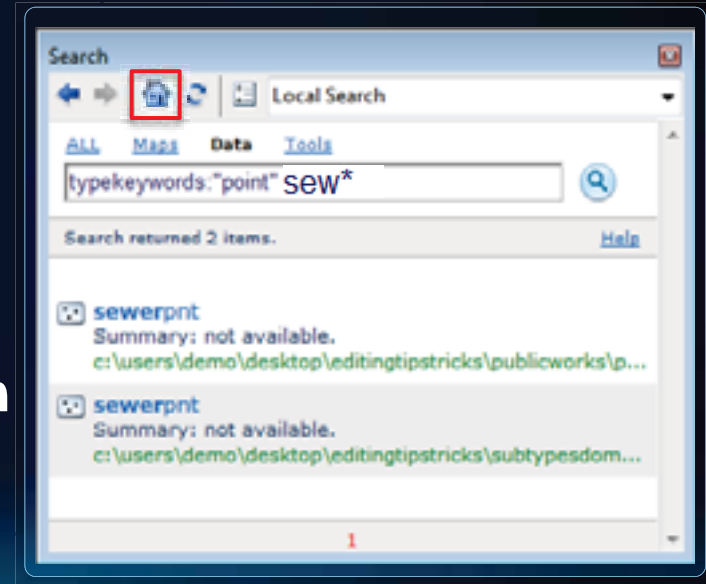
Fulton County Dept. of Health and Wellness

Searching for Information



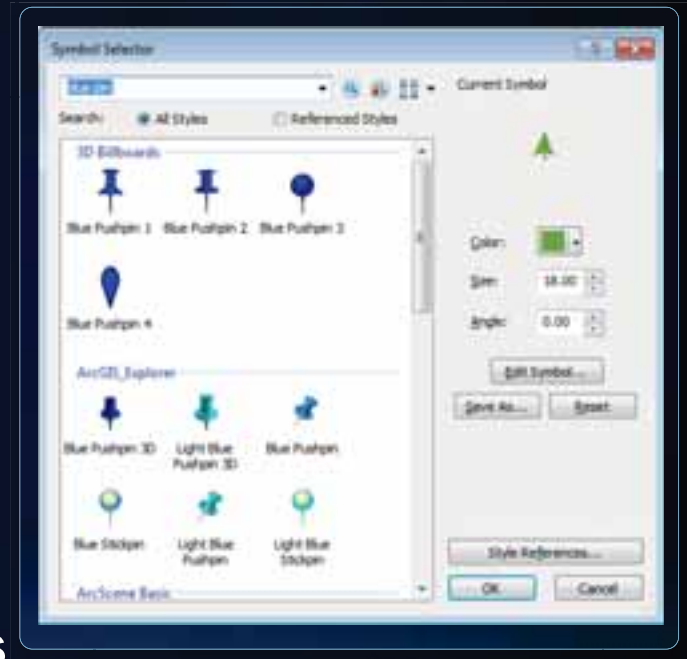
Search Window

- Index locations that will be searched
- Filter searches by data type
 - typekeywords:"point", "line", "polygon"
- * is the wild card
 - sew*
- To clear search press Home button



Symbol Selector Search

- **Automatically searches a style's:**
 - Name
 - Category
 - Tags
- **Describe the symbol you want**
 - “Blue pin”
- **Search all styles or selected styles**
- **List previous searches**



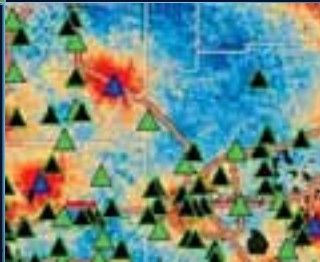
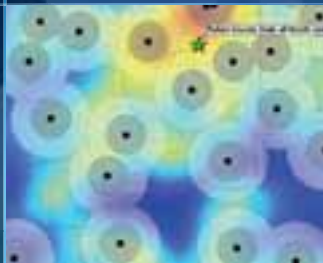
Editing

Create and Analyze

- **Improving the editing experience with time saving workflows and shortcuts**
- **Many improvement to make you productive**
 - **Basemap layer**
 - **Feature templates**

Fulton County Dept. of Health and Wellness

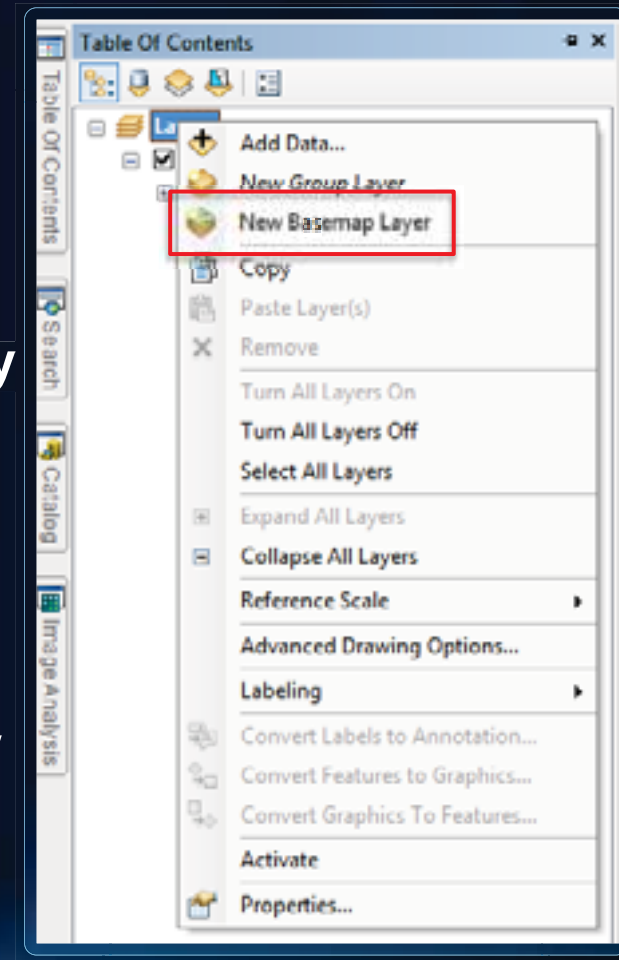
Editing



Basemap Layer

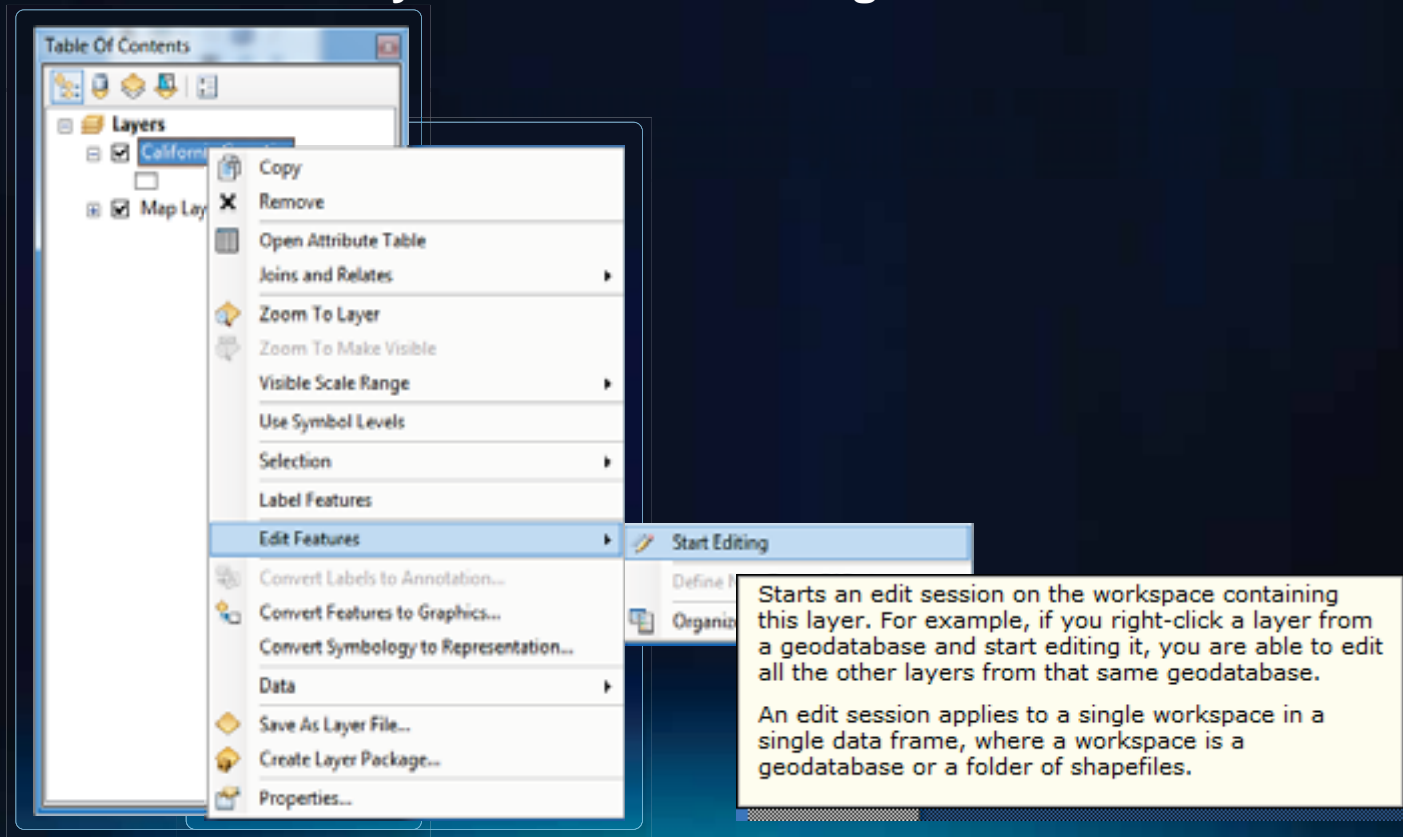
Optimized map display

- Reduces number of redraws
 - Don't have to wait as long
- Allows data to be seamlessly roamed
- Layers are **not** editable
- Right click data frame > New Basemap Layer



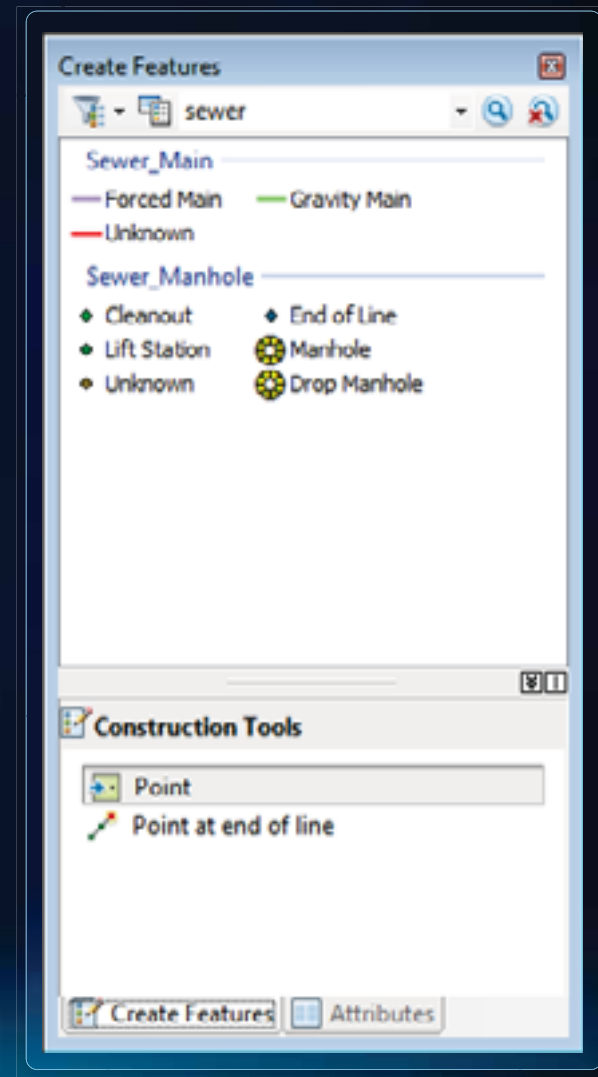
Quickly Start Editing

- Right click layer > Edit Features > Start Editing
 - Automatically turns on the editing toolbar



Feature Template

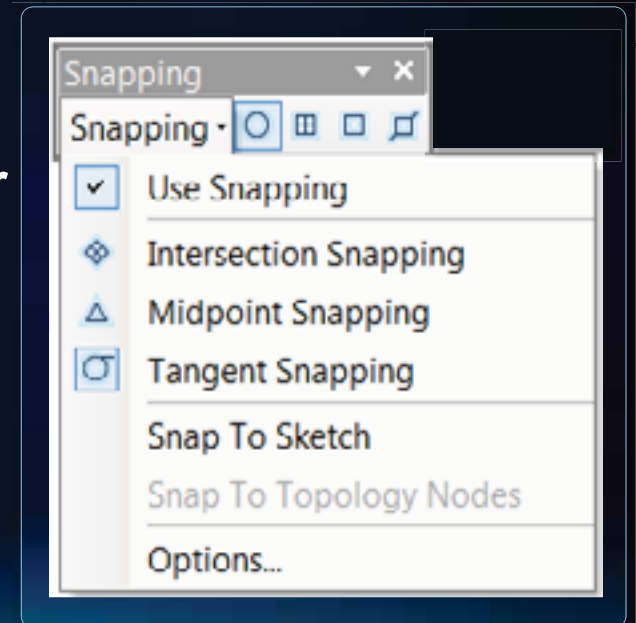
- **Create duplicate templates**
 - Different default attributes
 - Different default construction tool
 - No schema change
- **Templates saved as layer property**
- **Scale dependant**



New Snapping Toolbar

Easy to use environment

- Spacebar temporarily suspends snapping
- Add background to snap tips when working with imagery
- Can snap to layers in Basemap Layer
- Snaps only to visible layers



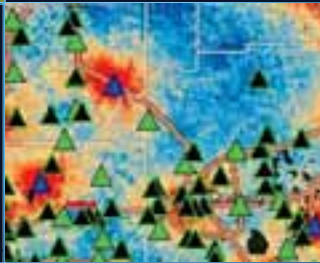
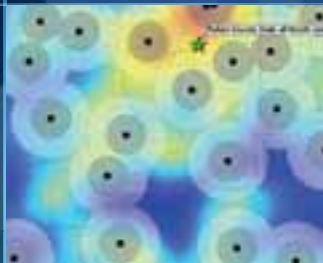
Sharing Maps and Data

Sharing

- **Making collaboration simple so more analysis can occur**
- **Many improvements to help collaboration**
 - **Layer packages**
 - **Map packages**

Fulton County Dept. of Health and Wellness

Sharing



Layer Package - .lpx

Just zip and ship

- **Can be created from:**

- Layer
- Group layer
- Selected layers

- **Consist of:**

- Data - .gdb
- Layer file
 - Feature template



- **Double click on error in the Prepare window to fix**

Map Packages - .mpk

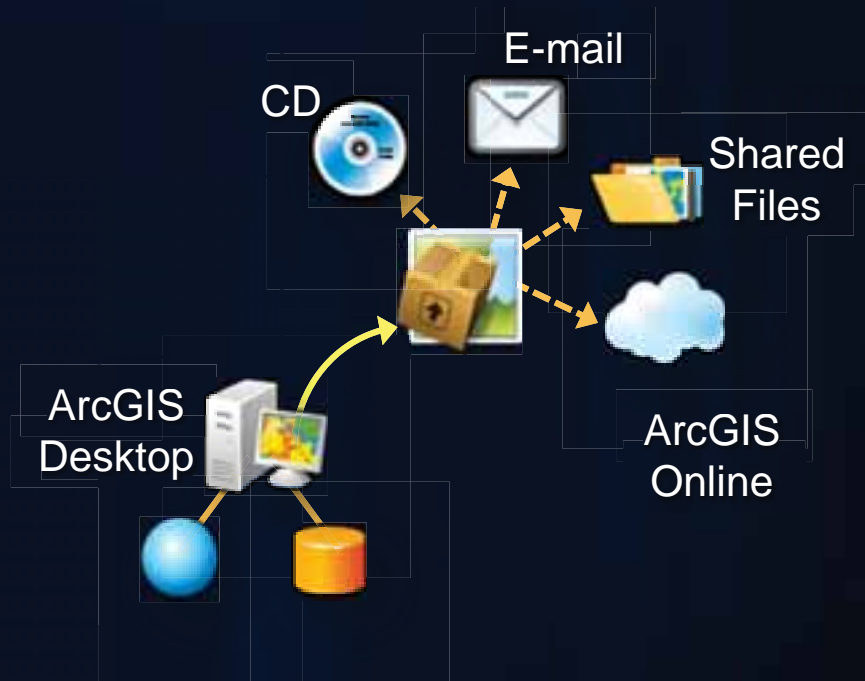
Single convenient portable file

- **Consist of:**

- .mxd
- Data – .gdb

- **Includes All data**

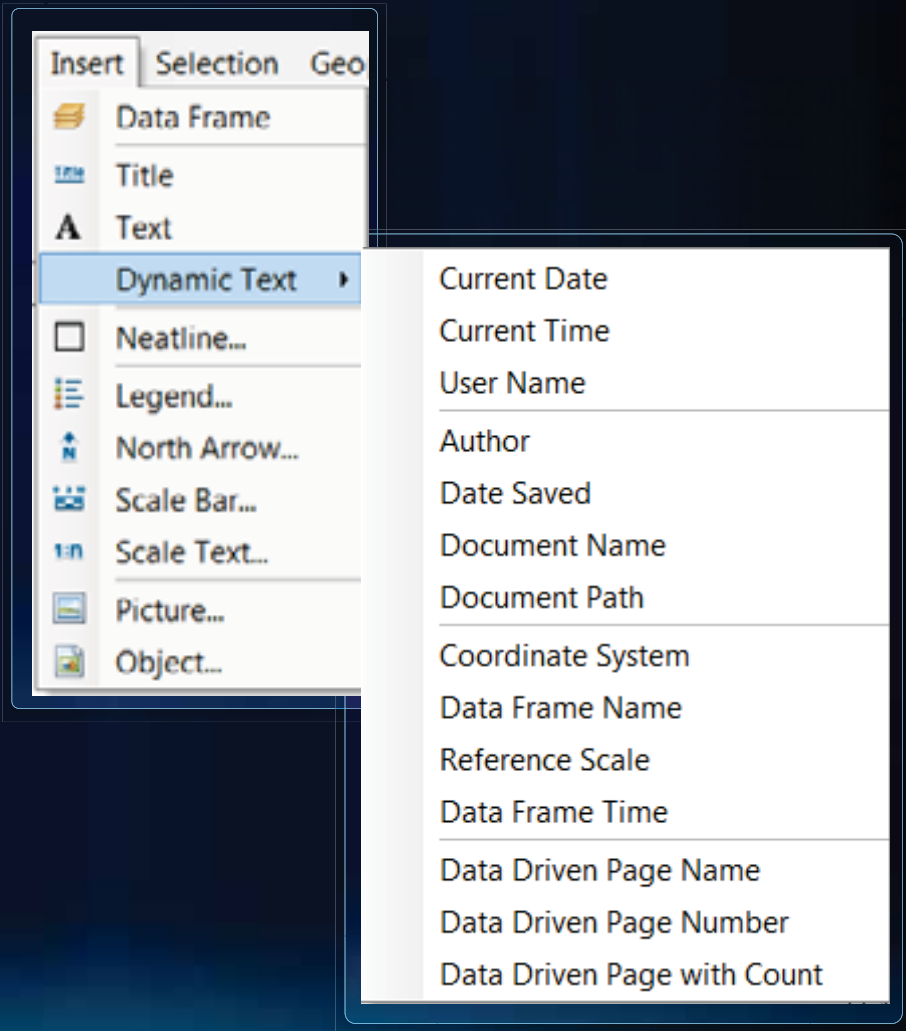
- Joins
- Relates
- Relationship classes
- Topologies
- ...



Dynamic Text

Automatic updates

- **Text changes based upon the current properties of the map**
- **Customize text**
 - **Dynamic text type**
 - **Statistic text**
 - **Format tags**
- **Copy and paste from help**



Where to find more?

resources.arcgis.com

ArcGIS.com Support.esri.com Esri.com Sign In

ArcGIS Resource Center Help Blogs Forums

Integrated Support and Community Resources

Learn more about ArcGIS Go to the ArcGIS Blog

ArcGIS Products	Functions	User Communities	Solution Products
<ul style="list-style-type: none">• Desktop• Web• Mobile• Server• Engine• Explorer• ArcIMS	<ul style="list-style-type: none">• 3D GIS• ArcGIS Content• Geoprocessing• Geodatabase• Mapping• CAD Integration• Data Reviewer• Developer SDKs• Enterprise GIS• Geocoding• Imagery• Workflow Manager	<ul style="list-style-type: none">• Community Maps• Defense & Intelligence• Electric & Gas• Hydro• Local Government<ul style="list-style-type: none">• Infrastructure• Land Records• Public Safety• Roads & Highways• Telecommunications• Water Utilities	<ul style="list-style-type: none">• ArcLogistics• Aeronautical Solution• Business Analyst• Defense Mapping• Geoportals Extension• Nautical Solution• Production Mapping• Tracking Server

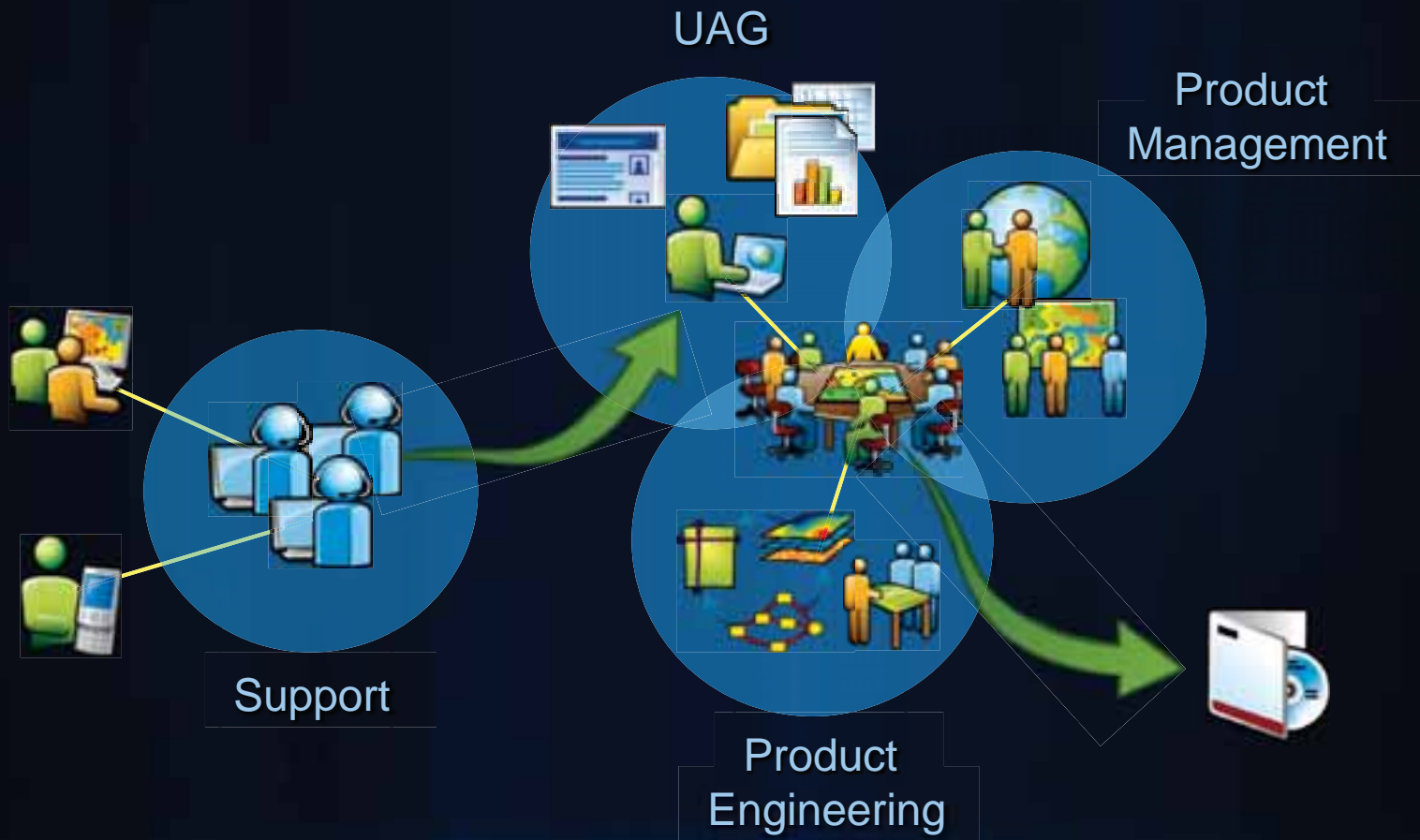
English 中文 Français Deutsch 日本語 Español

esri

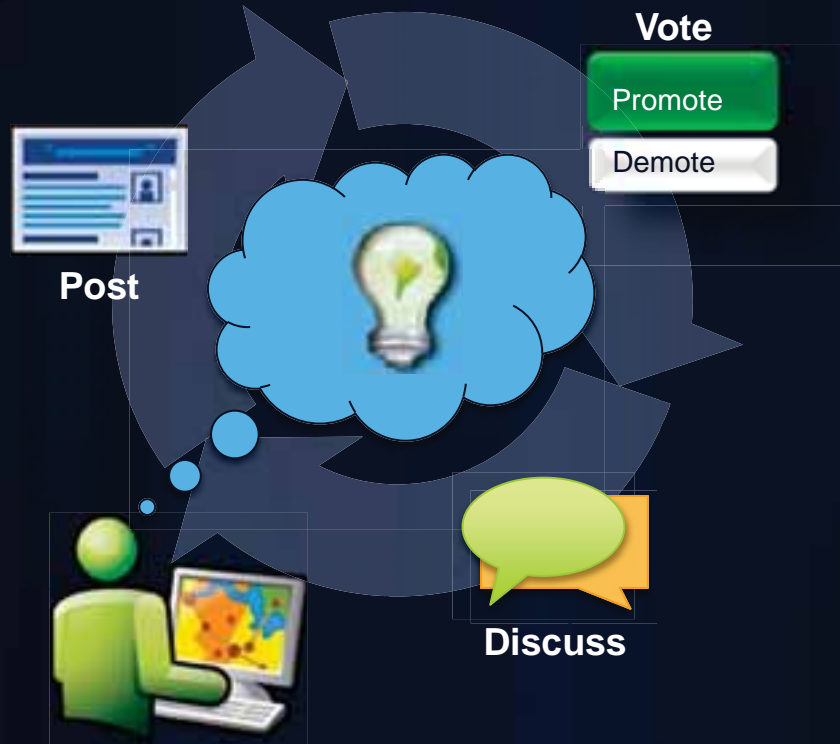
Done Internet | Protected Mode: On 100%

Support Resources

User Advocacy Group



ArcGIS Ideas



Searching the Support Center



- **One location to access all Online Support Resources**
 - **Help Documentation**
 - **Forum Posts**
 - **Knowledge Base**
 - **Blogs**
 - **Bugs**

How to Contact Support?



E-mail



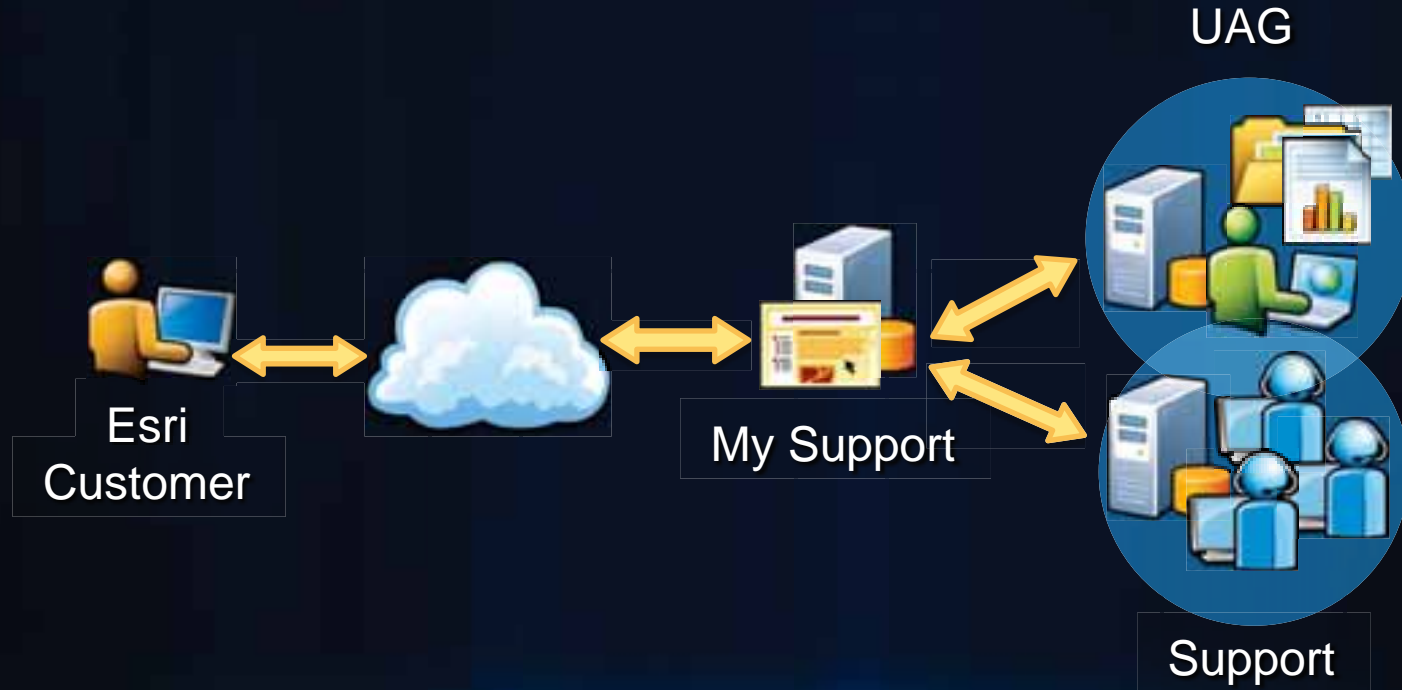
Chat



Phone

My Support

- Data from Incidents and Bugs made available in an online dashboard.



Resources

- **ArcGIS Desktop Blog – Desktop ‘How To’s’ and tips**
 - <http://blogs.esri.com/Dev/blogs/arcgisdesktop/default.aspx>
- **Support center news blog**
 - <http://blogs.esri.com/Support/blogs/supportcenter/default.aspx>
- **ArcGIS Ideas page**
 - <http://ideas.arcgis.com>
- **Support site**
 - <http://support.esri.com>

- **What's new for tables and attributes at ArcGIS 10**

- [http://help.arcgis.com/en/arcgisdesktop/10.0/help/index.html#/What s new for tables and attributes/00qp00000015000000/](http://help.arcgis.com/en/arcgisdesktop/10.0/help/index.html#/What%20s%20new%20for%20tables%20and%20attributes/00qp00000015000000/)

- **Dynamic Text**

- [http://help.arcgis.com/en/arcgisdesktop/10.0/help/index.html#/Working with dynamic text/00s900000013000000/](http://help.arcgis.com/en/arcgisdesktop/10.0/help/index.html#/Working%20with%20dynamic%20text/00s900000013000000/)

- **Map Packages**

- <http://help.arcgis.com/en/arcgisdesktop/10.0/help/index.html#//0017000000q5000000.htm>

Thank You!

Please fill out your surveys



esri