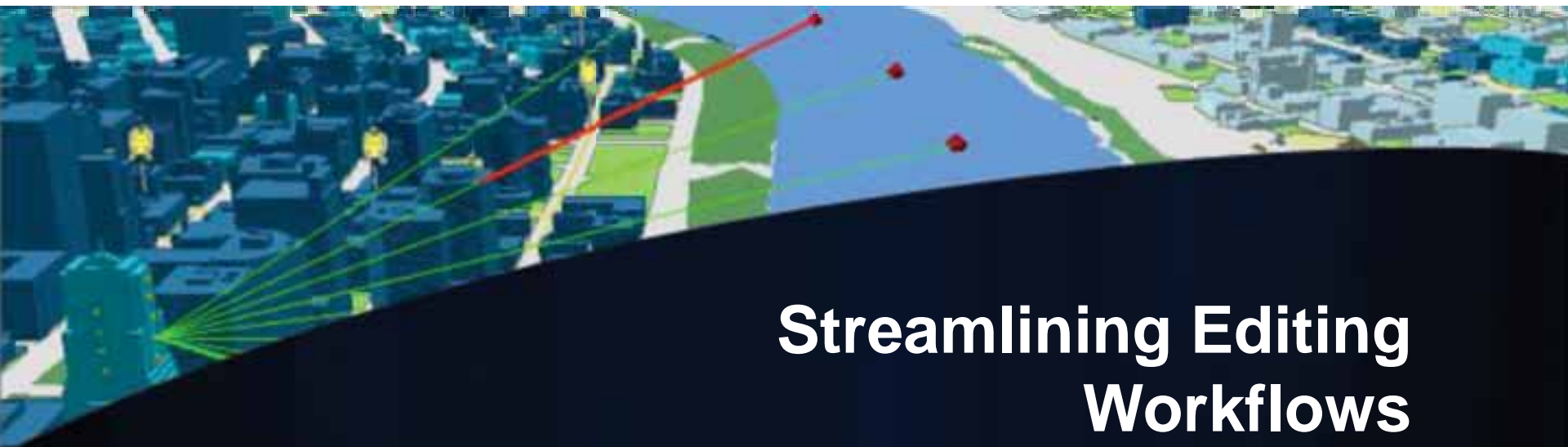


Esri | California • Hawaii • Nevada
Regional User Group Conference

February 23–24, 2011 • Esri • Redlands, CA

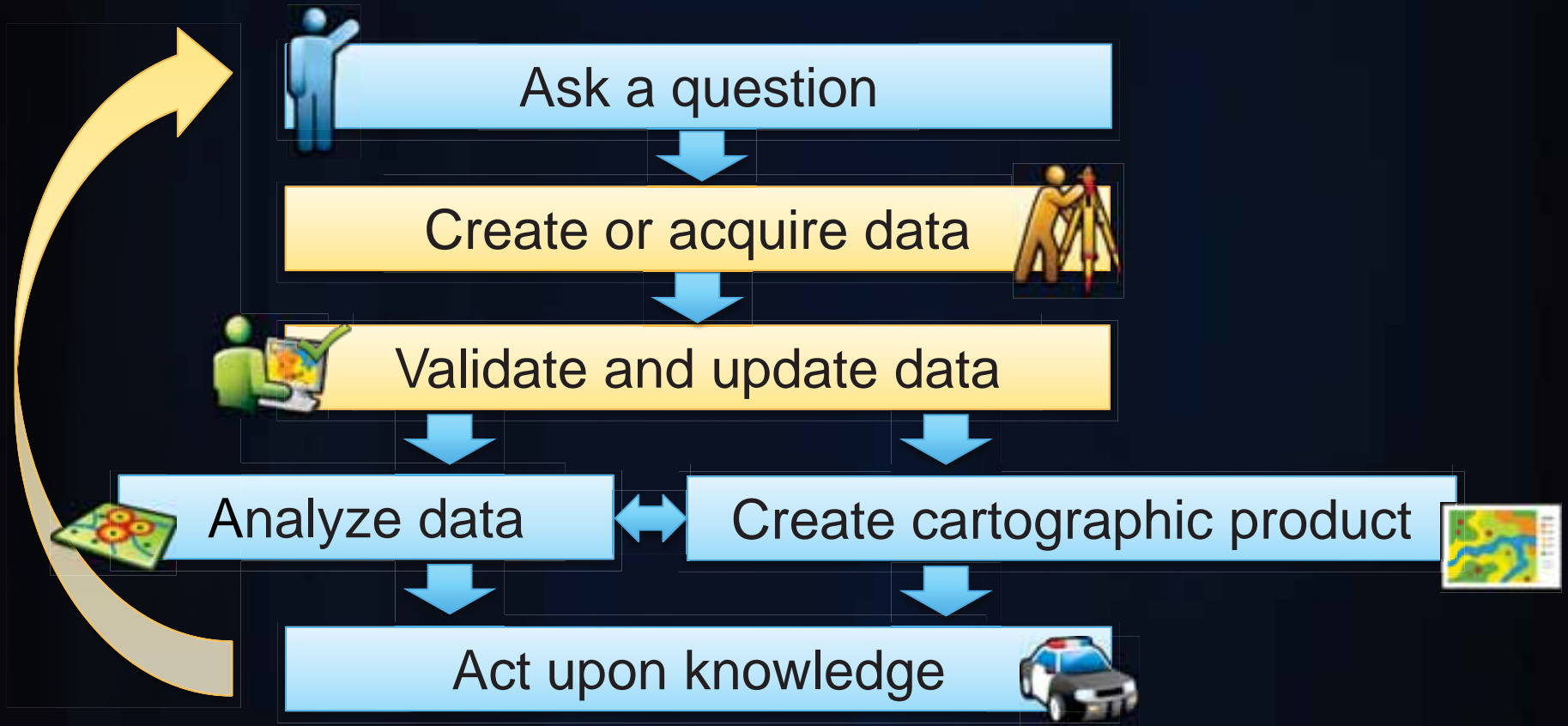


Streamlining Editing Workflows

Amber Bethell



Workflow for solving geographic problems



Creating Data

Setting the Editing Environment

- Snapping

- Toolbar

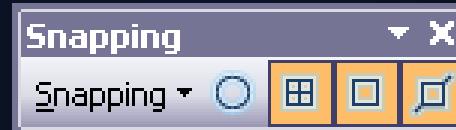
- By Type

- Point, End, Vertex Edge

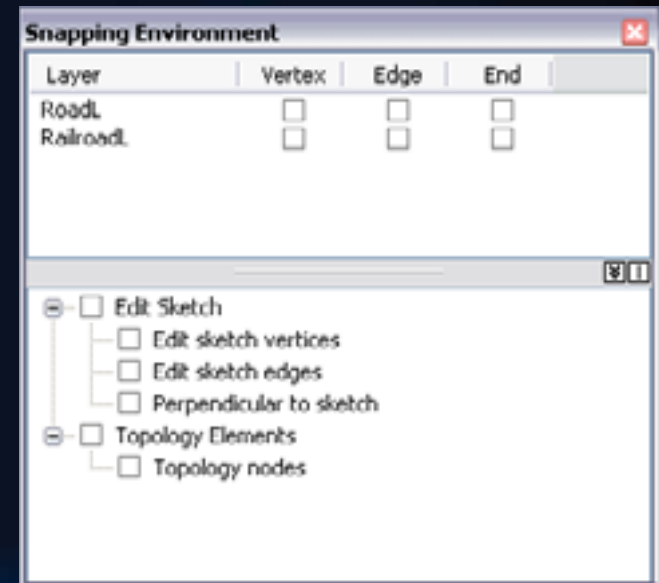
- Feedback in Map

- Classic Snapping

- By Layer



- Feature construction toolbar



Feature Templates

- **Define:**
 - Target layer
 - Attributes
 - Default Construction Tool
- **Automatically created if none exist**
- **Stored in map document (.mxd) and layer file (.lyr).**





Creating Features and Working with Templates

Tips for creating features

- **Author map before you start editing the first time**
 - **Set up symbology**
 - **Add all layers**
- **Set appropriate database defaults in the data model**
- **Use layer files, mxds, and packages to distribute and reuse the templates.**

- **Use Tab – position Feature Construction toolbar**
- **Use Z X C Q – quick navigation**
- **Use Space Bar – Toggle Snapping**

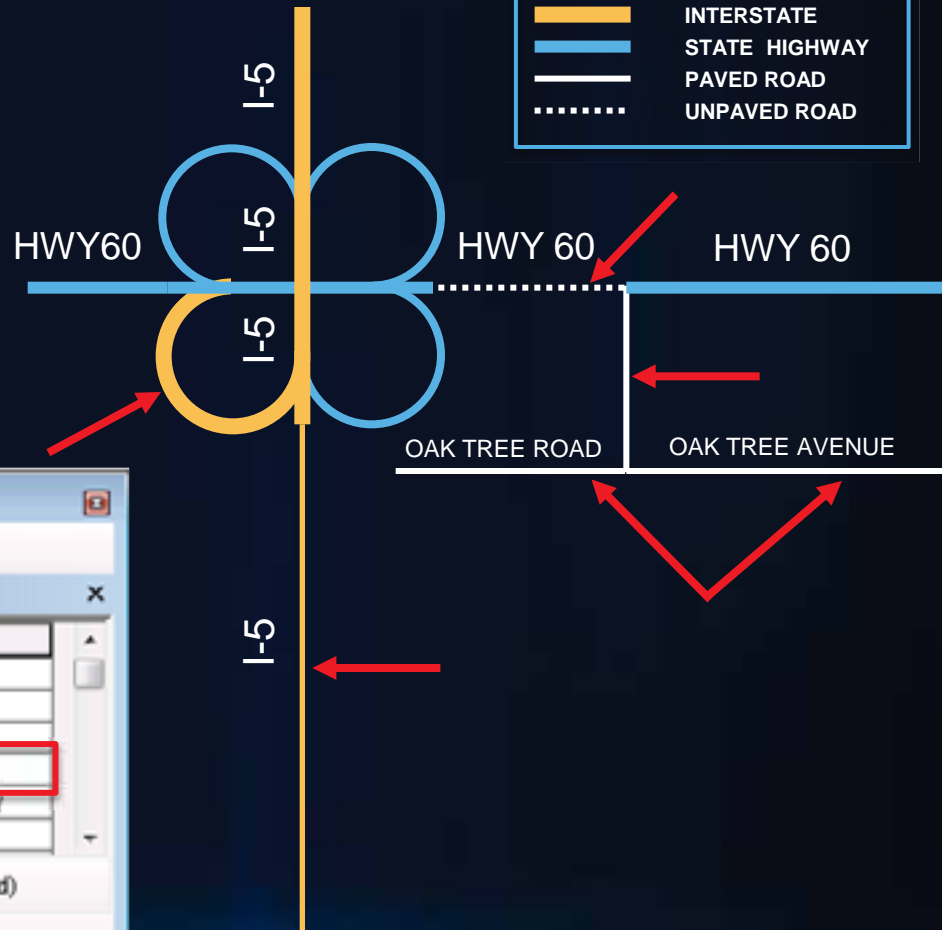
Creating Quality Data

Quality

- **What is Quality?**
 - **Intended purpose and usage**
 - **Technical specifications**
 - **Client requirements**
- **Performing analysis on bad data leads to bad conclusions**
- **Consider attribution and geometry of features**

Common Types of Attribute Errors

- Completeness
- Consistency
- Accuracy
- Valid combinations



Table

Streets

OBJECTID *	Lanes	StreetName	Type
1	2	24th	Paved Road
2	2		Paved Road
3	4	I-5	Interstate
4	1	I-5	Interstate
5	4	HWY60	State Highway
6	2	Oak Tree Road	Paved Road

1043 (0 out of 3002 Selected)

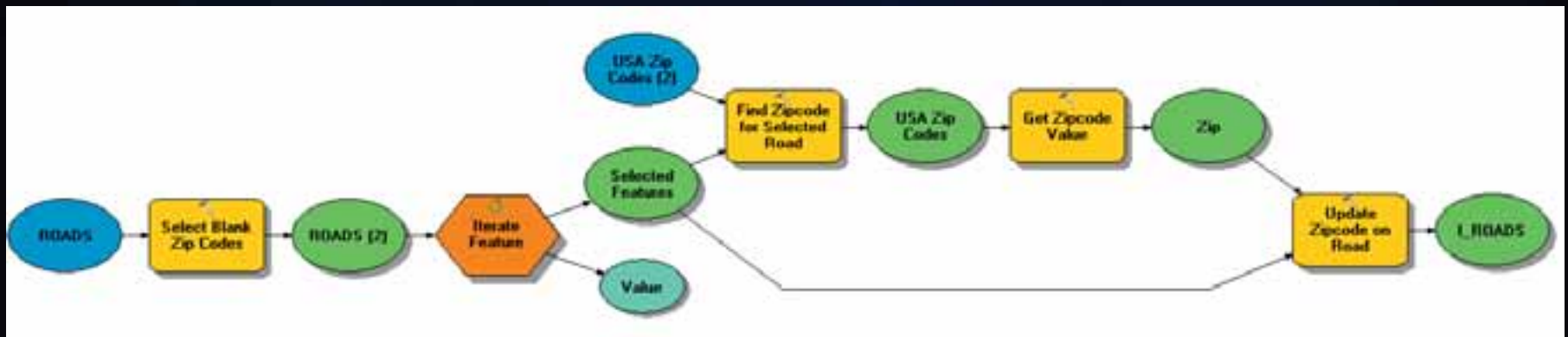
Finding attribute issues with queries

- Issue: Highways of type interstate must have at least 2 lanes
- Select highways with type = interstate and lanes < 2 using Select By Attributes



Finding and fixing attribute issues with GP

- Use Geoprocessing
 - Run queries on data to find issues
 - Perform calculations on data to fix issues
- Well defined data model
- Use templates when creating features

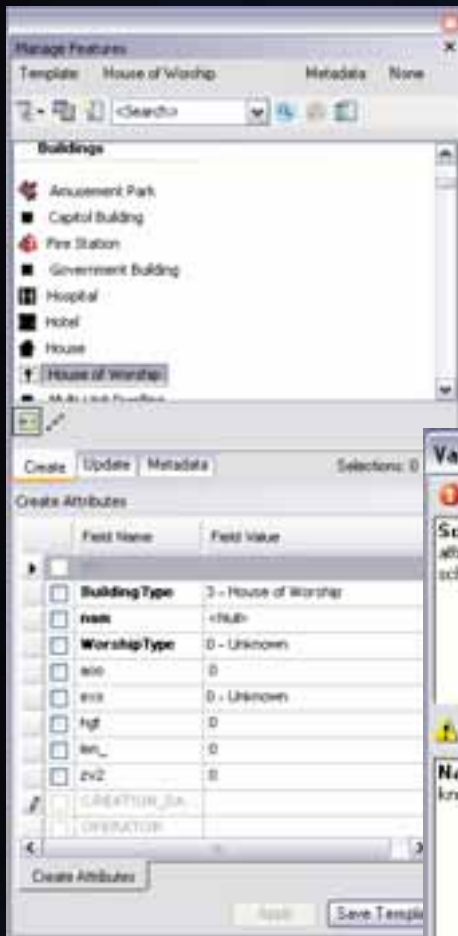




Editing with Production Mapping

Extension for Producing Data and Cartographic Products

- Integrated Quality Control
- Extends on standard Editing
 - Additional types of templates
 - Feature Level Metadata





Creating Features with Production Mapping

Common Types of Geometry Errors

- **Relational Accuracy**
 - **Misplaced Features**
 - **Gaps & Overlaps**
 - **Connectivity**
- **Missing Features**
- **Positional Accuracy**

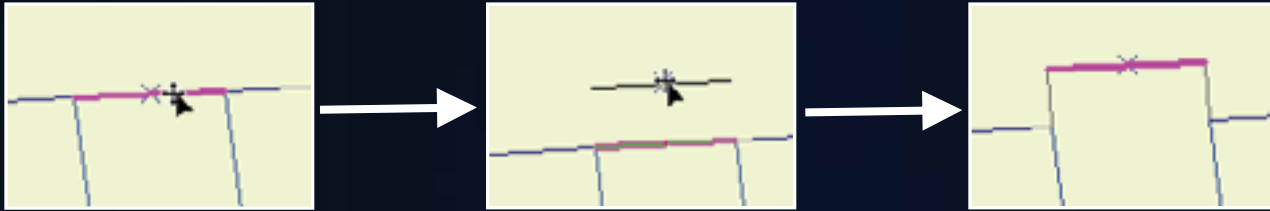


Finding and fixing geometry errors

- **Use Map Topology**
- **Use appropriate geometry types**
 - **Topology**
 - **Geometric Networks**
 - **Parcel Fabrics**
- **Use Geoprocessing**
 - **Create Spatial Queries**
 - **Use GP tools to adjust features**
- **Use Data Reviewer**

Editing coincident geometry

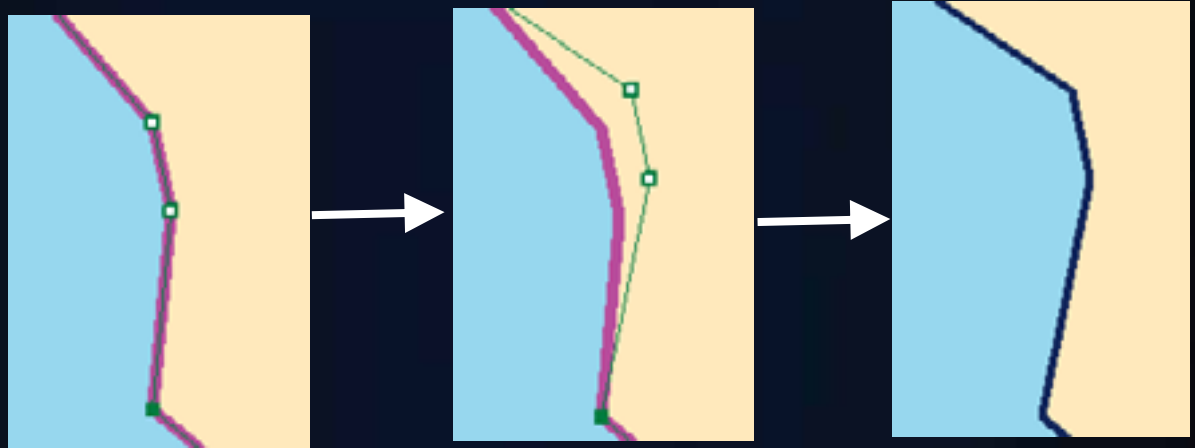
- Prevents introduction of errors
- Topology Edit tool



- Press **E** to select only edges, **N** to select only nodes

Editing coincident geometry

- **Modify Edge**

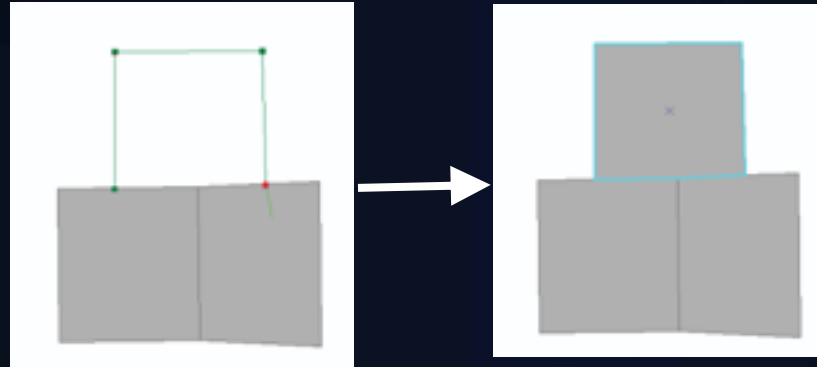


- **Reshape Edge**

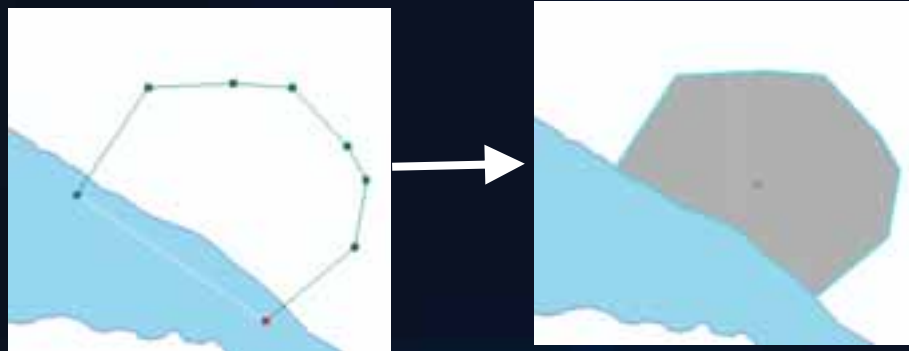


Editing coincident geometry

- Autocomplete Polygon

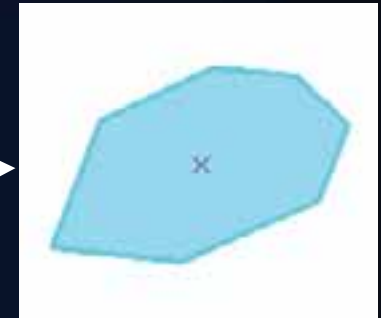
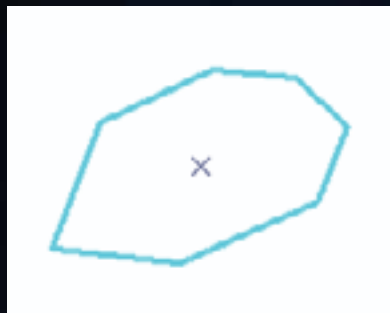


- Difference Polygon (Production Mapping)



Editing coincident geometry

- **Construct Features**



- **Generalize Shared Edge (Production Mapping)**



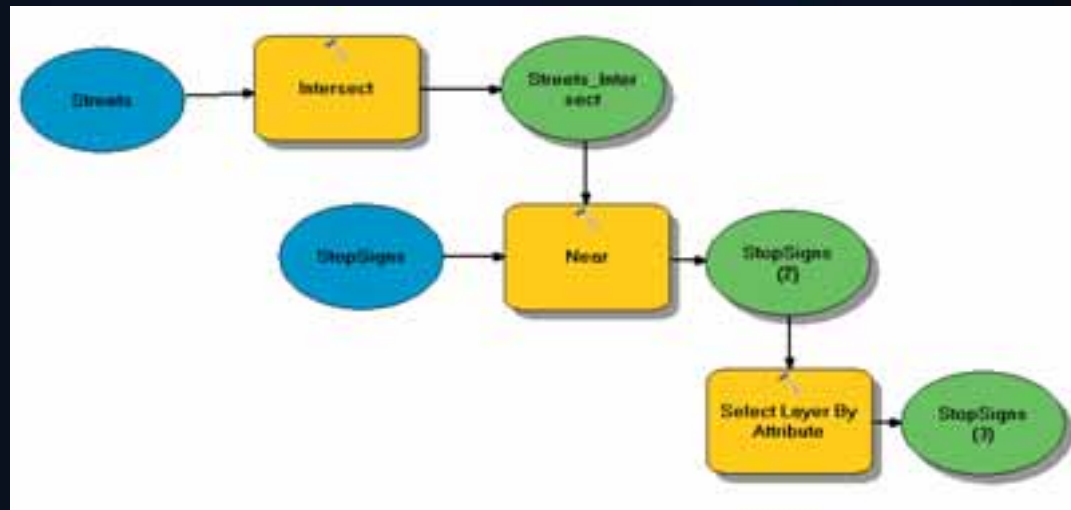
Finding spatial issues with queries

- Issue: Buildings must be within a parcel
- Step 1: Select Buildings within a Parcel using Select By Location
- Step 2: Switch Selection



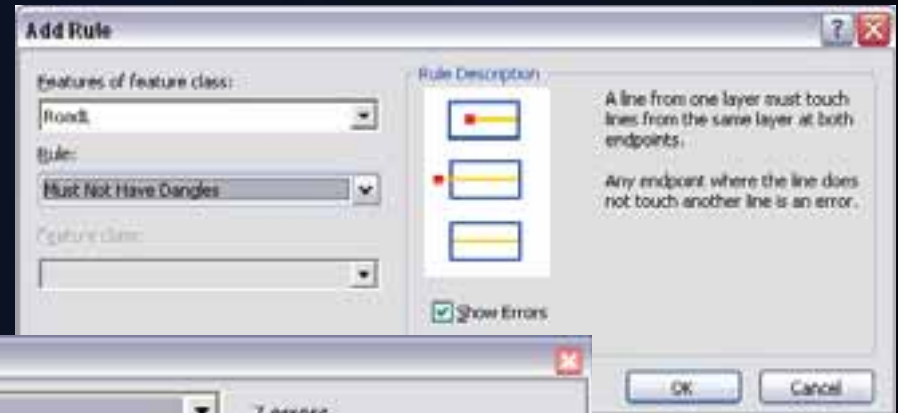
Identifying spatial errors with GP

- **Used for complex analysis problems**
 - Issue: Stop signs not within 50 feet of an intersection
- **Important tools**
 - Analysis Tools
 - Database Management Tools
- **Create new data**



Topology errors

- Requires geodatabase topology with rules
- Validate Topology
 - Checks dirty areas
- Error Inspector helps fix



Error Inspector

Show: <Errors from all rules> 7 errors

Search Now Errors Exceptions Visible Extent only

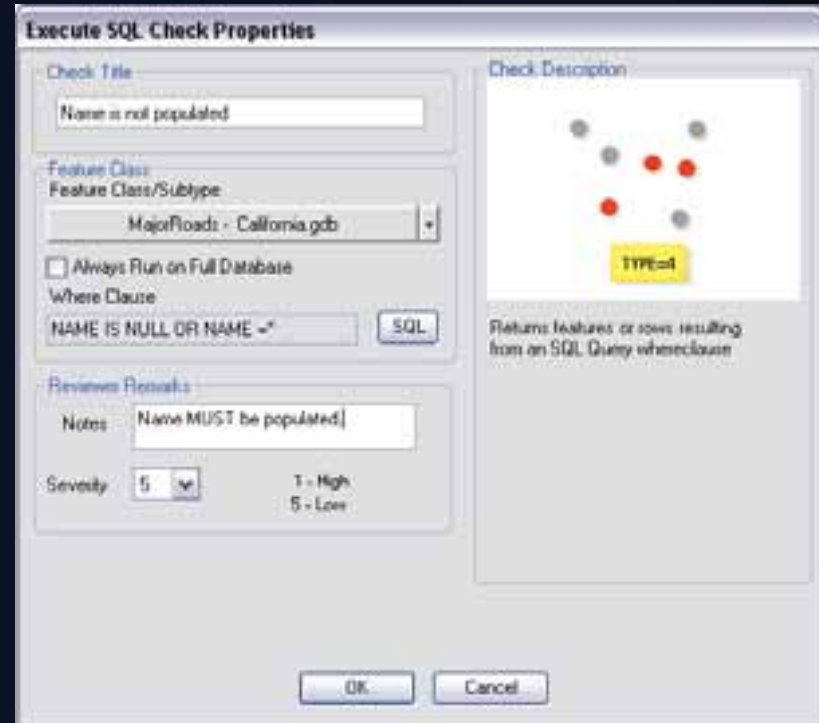
Rule Type	Class 1	Class 2	Shape	Fe
Must Not Have Dangles	RoadL		Point	32
Must Not Have Dangles	RoadL		Point	31
Must Not Have Dangles	RoadL		Point	31
Must Not Have Dangles	RoadL		Point	32
Must Not Have Dangles	RoadL		Point	28
Must Not Have Dangles	RoadL		Point	27
Must Be Covered By Boundary Of	CoastL	CoastA	Polyline	45



Validating Data with Data Reviewer

Extension for Data Validation and Analysis

- Automated Checks
 - Attribute
 - Spatial
 - Feature integrity
 - Metadata
- Batch Jobs
 - Distributable
- Visual Review
 - Guided inspection
 - Missing Features



Reviewer Checks Poster - <http://www.esri.com/library/fliers/pdfs/arcgis-data-reviewer-checks.pdf>



Tracking Information with Data Reviewer

Extension for Data Validation and Analysis

- Store information about errors
- Navigate to error features
- Validate, Correct, Verify
- Create Reports



RECORDID	OBJECTID	CHECK TITLE	NOTES	SEVERITY	REVIEWTECH
434	3885	Severity on Security Check (Schools, Landmark/Archie)	School just in landmark with a different name	3	verne@207
435	3030	Severity on Security Check (Schools, Landmark/Archie)	School just in landmark with a different name	3	verne@207
436	3563	Severity on Security Check (Schools, Landmark/Archie)	School just in landmark with a different name	3	verne@207

Origin Table	Check Type	Check Title	Record Count	Total Errors	Pass Rate	Fail Rate
GulfCoast	Events SQL Check	Events SQL Check (GulfCoast/Archie)	25	1	96.0%	4.0%
	Severity on Security Check	Severity on Security Check (GulfCoast/Archie)	5	0	100.0%	0.0%
	Severity on Security Check (Hospital)	Severity on Security Check (Hospital)	10	1	90.0%	10.0%
Hospital	Events SQL Check	Events SQL Check (Hospital/Archie)	20	2	90.0%	10.0%
	Severity on Security Check (Hospital)	Severity on Security Check (Hospital)	10	2	80.0%	20.0%
Schools	Events SQL Check	Events SQL Check (Schools/Schools)	204	10	95.1%	4.9%
	Severity on Security Check (Schools)	Severity on Security Check (Schools)	111	11	90.1%	9.9%

How to choose

- **Map Topology**
 - Data from same workspace
 - Ensure coincidence when editing
 - No rules to validate
 - Must be in edit session
- **Geodatabase Topology**
 - Requires feature dataset
 - Ensure coincidence when editing
- **Data Reviewer**
 - Shapefiles or databases
 - Compare between workspaces
 - No tools to edit data

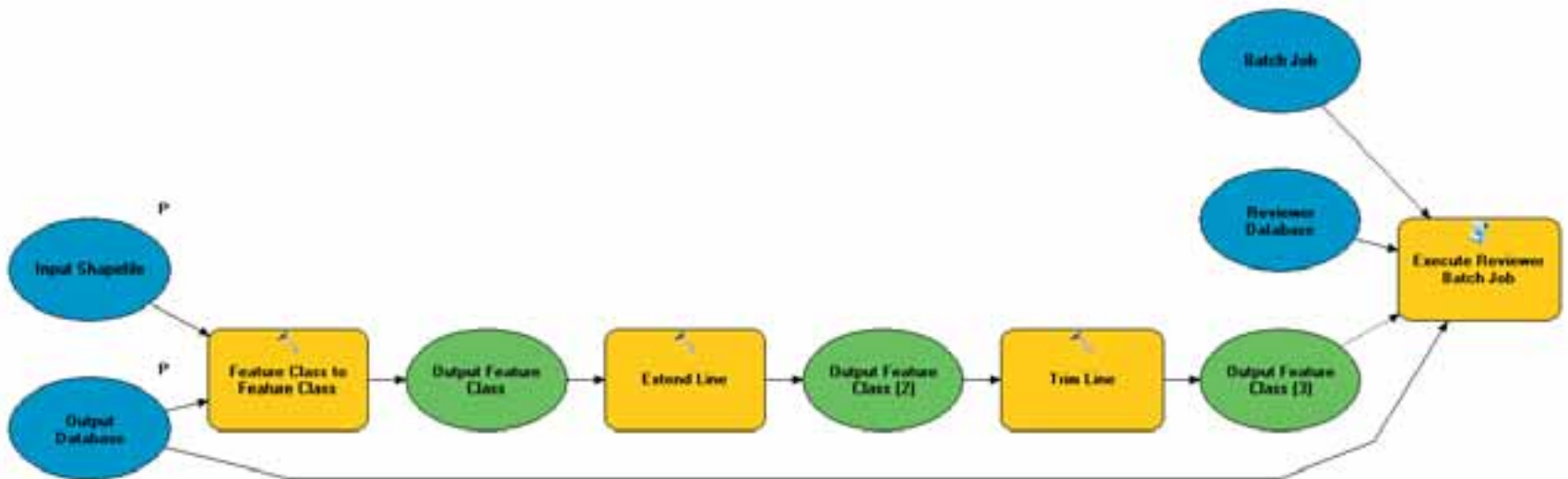


Validating Geometry with Data Reviewer

Ensuring Consistency

Geoprocessing and Models

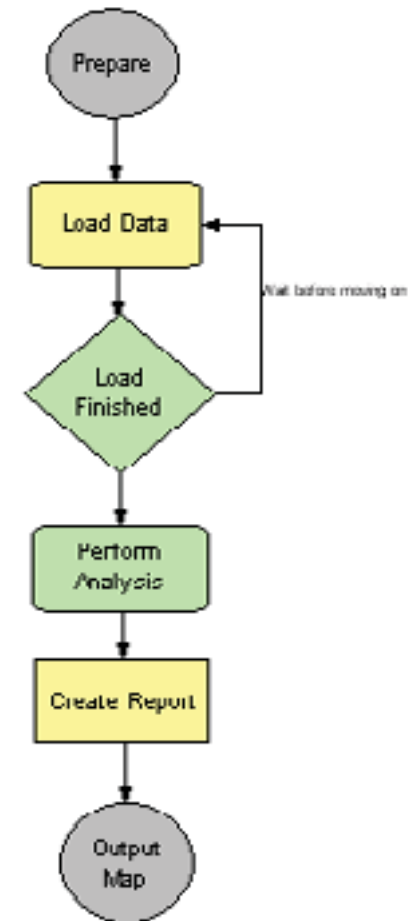
- Automate common processes
- Little or No manual interaction
- Run in or out of edit session





Workflow Manager

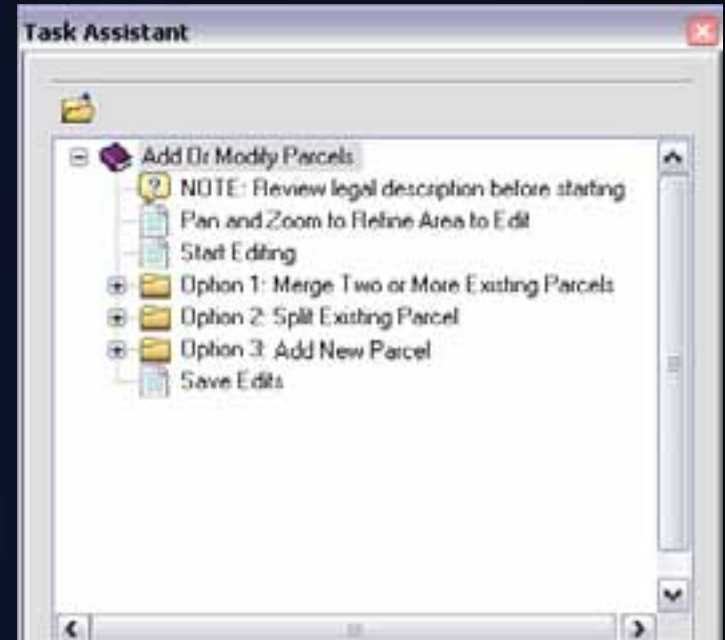
- **Standardize workflow to automatically launch necessary programs**
 - non-GIS
 - ArcMap
- **Manage database versions**
- **Create and assign units of work (jobs)**
- **Notify users of pending work**
- **Track and manage status of work**

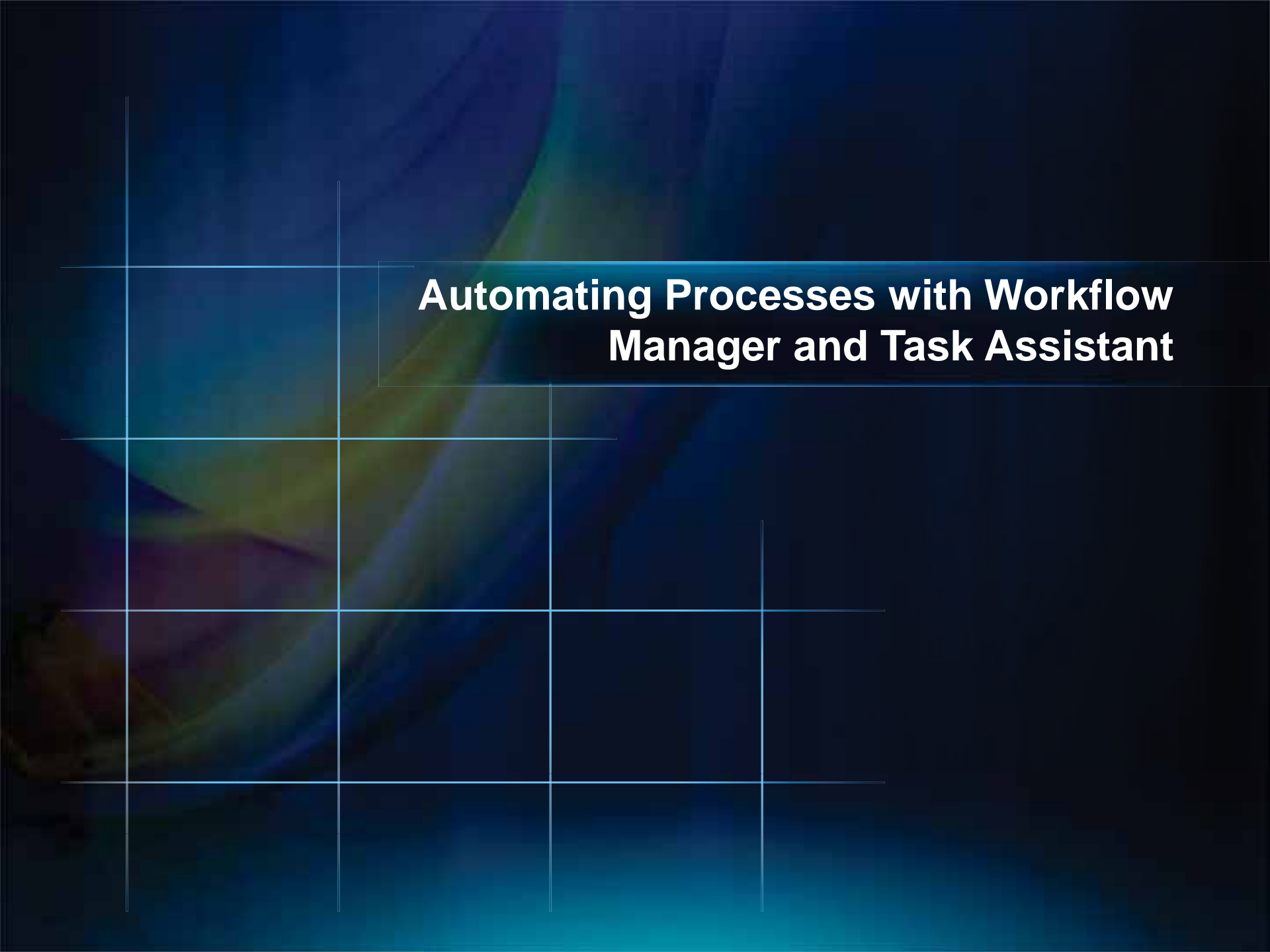




Task Assistant

- Take up where Workflow Manager leaves off
- Standardize ArcMap workflows
 - Reduce learning curve
- Combine multiple tasks into one click

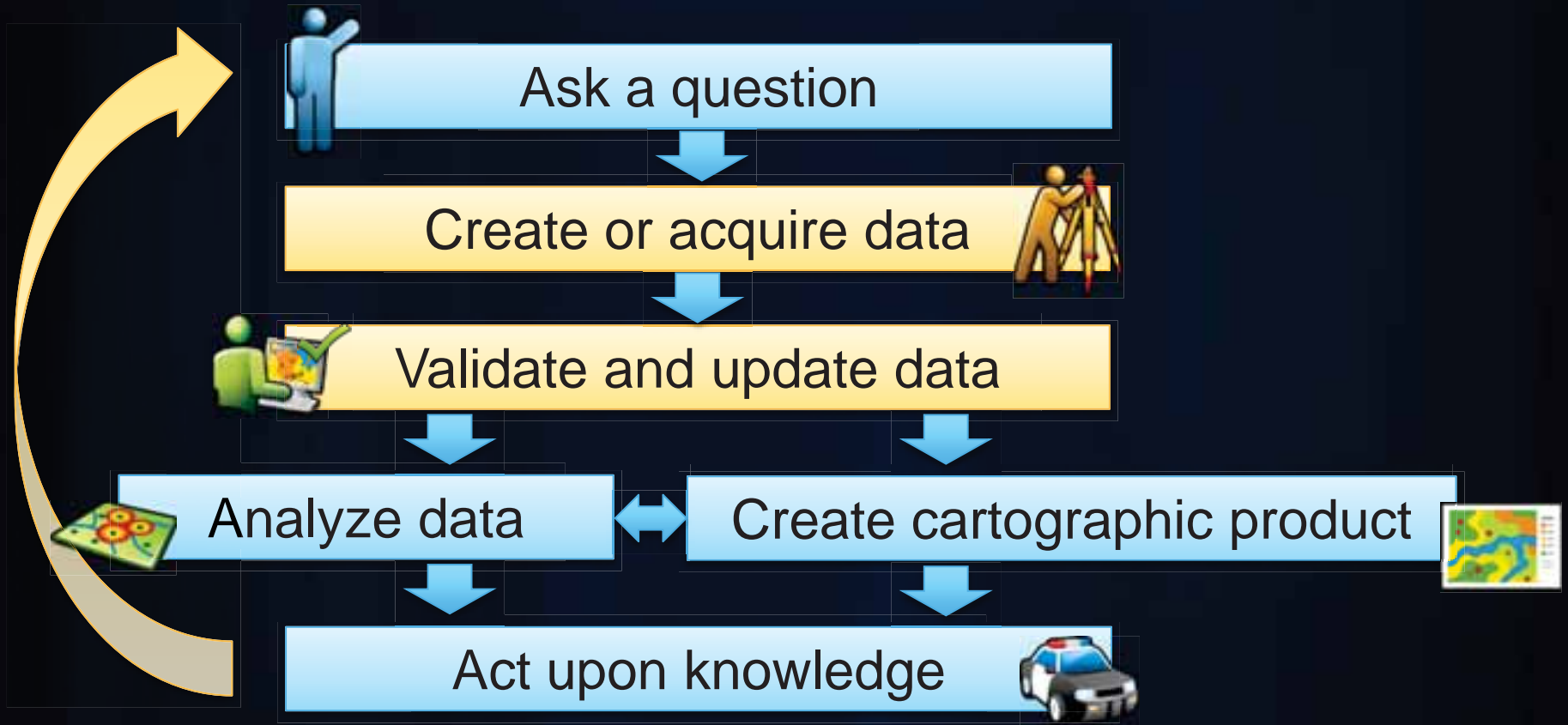




Automating Processes with Workflow Manager and Task Assistant

Further Information

Workflow for solving geographic problems





Production Mapping Product Information

- Enables high volume, high quality production
- Facilitates standard, repeatable workflows
- Individual Extensions
 - Data Reviewer
 - Workflow Manager
- Suite of Extensions
 - Production Mapping



Great Resources

- Resource Center
- Blogs
 - Editing - <http://blogs.esri.com/Dev/blogs/arcgisdesktop/archive/tags/Editing/default.aspx>
 - Data Reviewer - <http://blogs.esri.com/dev/blogs/datareviewer/Default.aspx>
- Product Information
 - Data Reviewer - [www.esri.com\datareviewer](http://www.esri.com/datareviewer)
 - 60-day Free Evaluation
 - ArcGIS Data Reviewer Checks poster
 - Production Mapping – [www.esri.com\productionmapping](http://www.esri.com/productionmapping)
 - Workflow Manager – [www.esri.com\workflow](http://www.esri.com/workflow)

Questions?