



Building Apps with the ArcGIS Runtime SDK for iOS

Nick Furness

@geeknixta

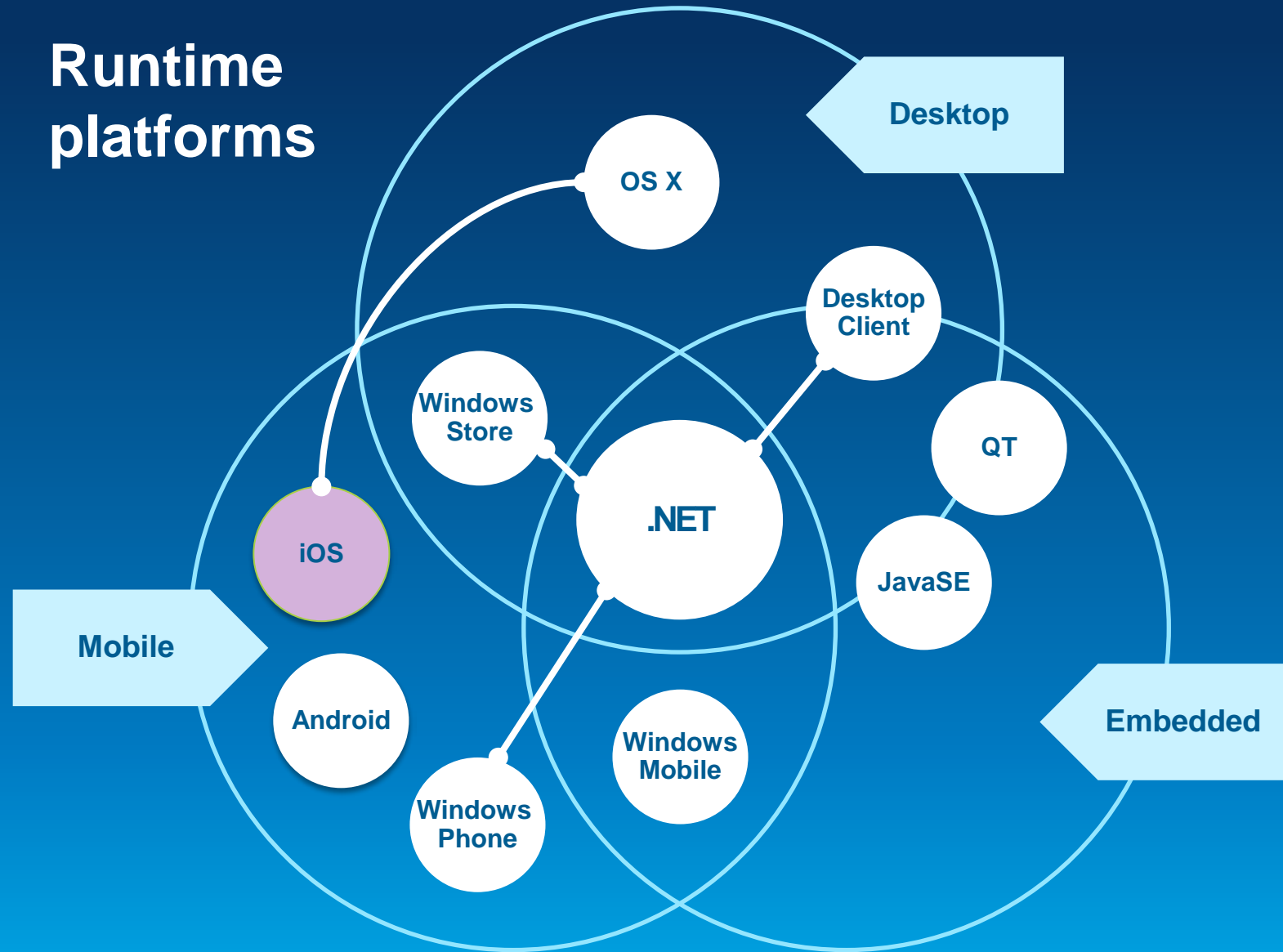
Esri Developer Summit
Washington, DC

ArcGIS Runtime SDKs

10.2 Released!



Runtime platforms



They do lots...



- Blazing fast maps



- High-quality cartography and symbology



- Use maps, layers, and data from the ArcGIS cloud



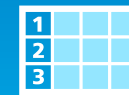
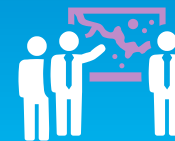
- Edit, geocode, route, and query



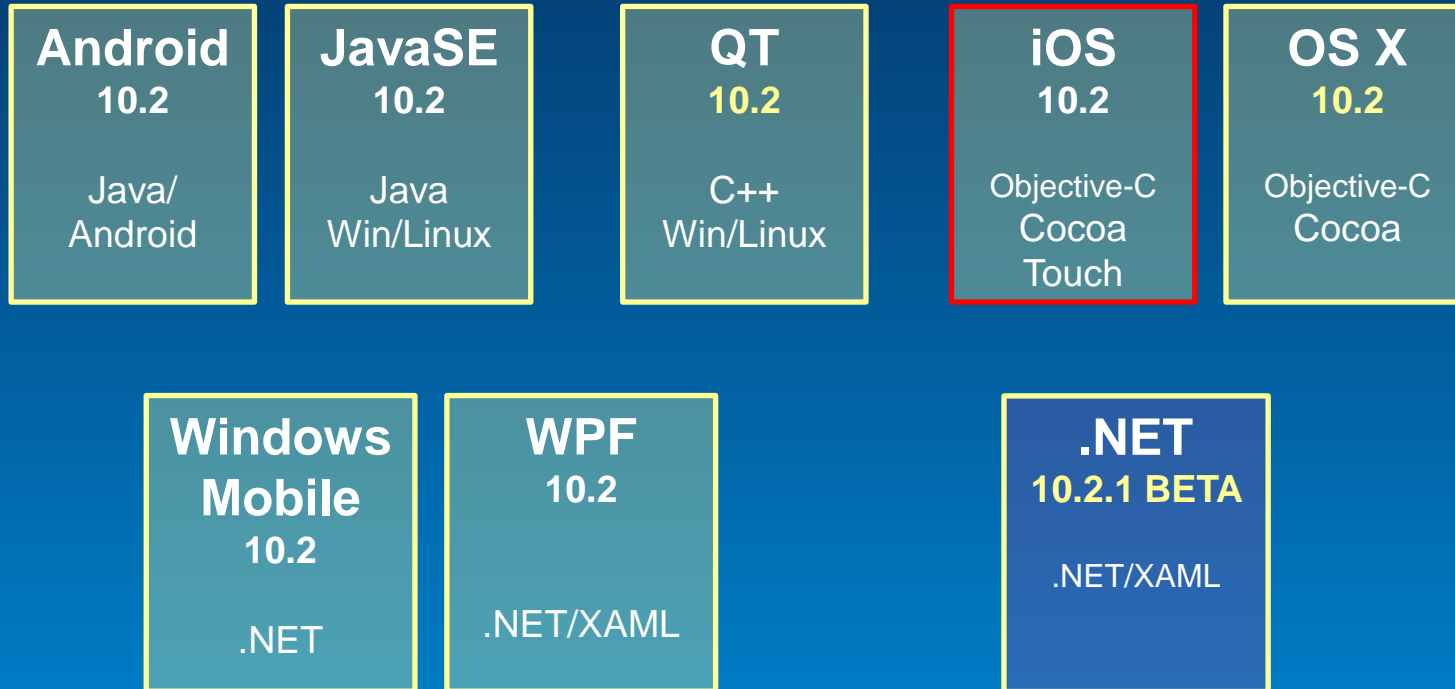
- Perform analysis



- So much more

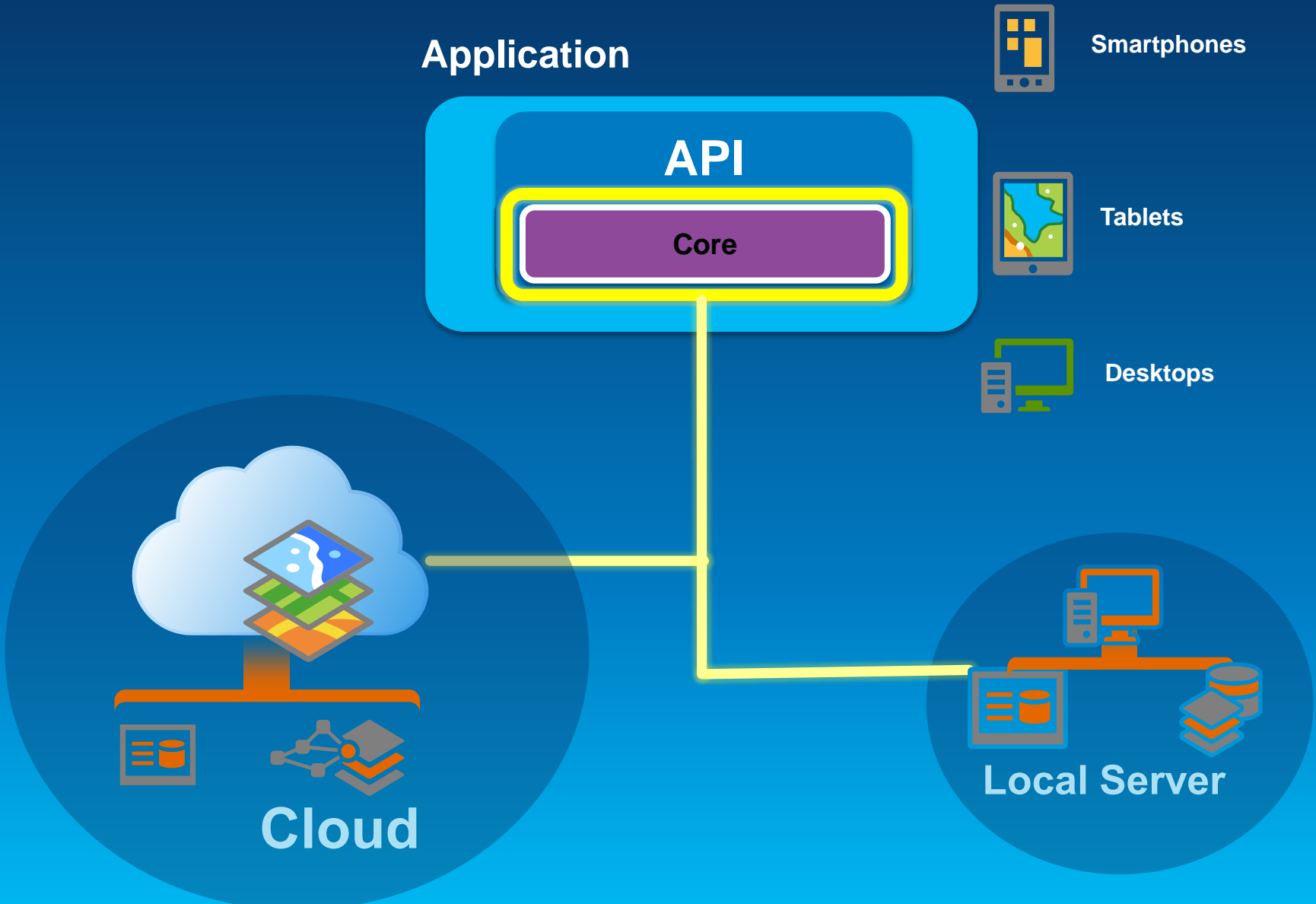


SDK Platforms



Core Runtime

Runtime API Architecture



Before you begin...



- **Intel-based Mac**
 - **OSX 10.7, 10.8 and 10.9**
(Lion, Mountain Lion & Mavericks)



- **Xcode from the App Store**
 - **Simulator**
 - **iOS SDK**



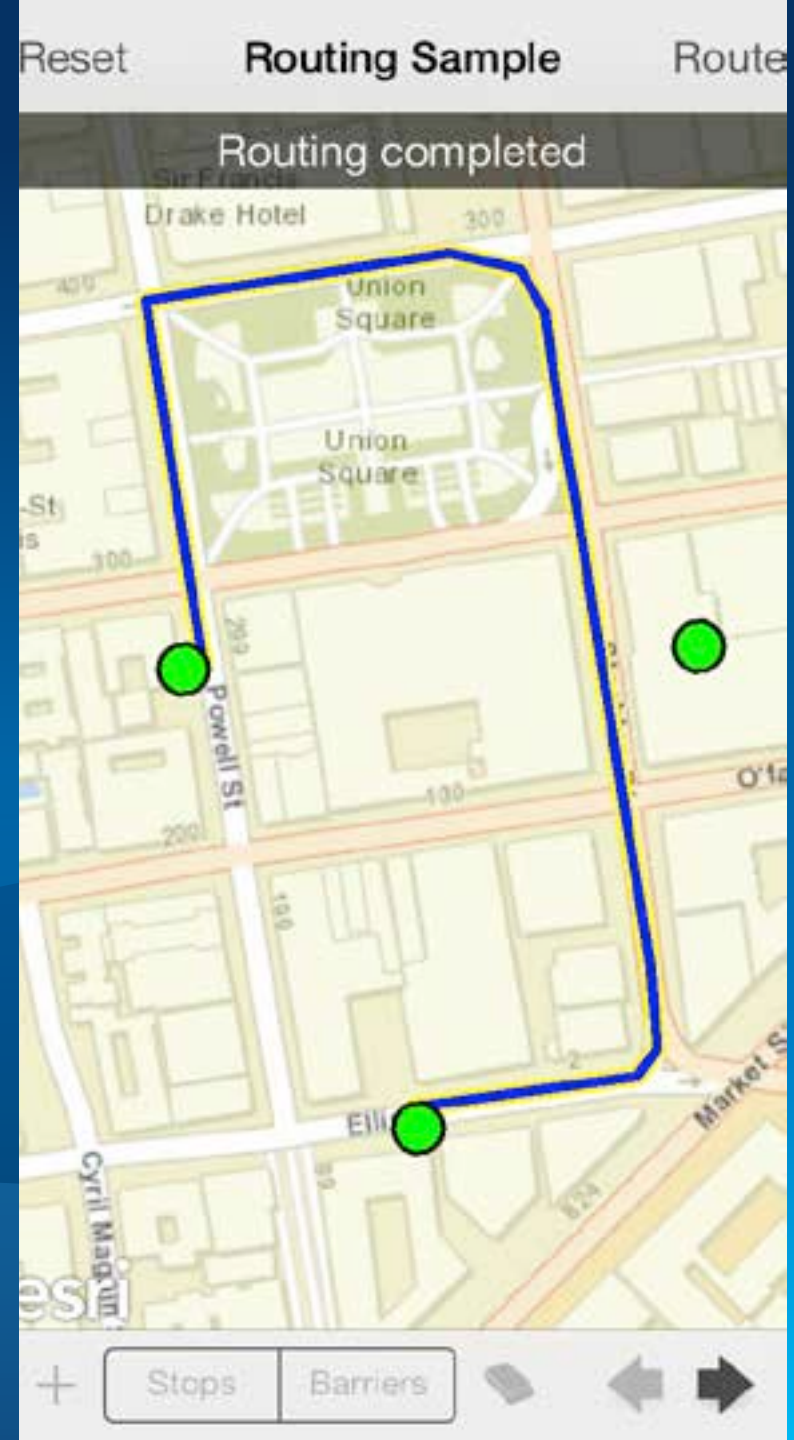
- **ArcGIS Runtime for iOS v10.2 Update 1**

To test and deploy on actual hardware or older iOS...

- **Join Apple's iOS Developer Program**
 - **Standard : AppStore distribution**
 - **Enterprise : In-House distribution**



The ArcGIS Runtime SDK for iOS



ArcGIS Runtime SDK for iOS



- **Build native applications using Objective-C**
 - iPhone 3G, 4/4S, 5/5S/5C, iPod Touch, iPad
 - iOS 6.0 and up



What you can do with the SDK

- Display maps
- Perform analysis
- Visualize results
- Collect data



Displaying a Map

- **UI Component : AGSMapView**
 - **Responds to gestures**
 - Pinch to zoom & rotate
 - Drag to pan
 - Tap & Hold to magnify
 - **Displays GPS location**
 - Auto pan
 - Default (pan as necessary)
 - Driving
 - Walking



Adding data to your map

- **Mashup layers**
 - ArcGIS Server Tiled layer
 - ArcGIS Server Dynamic layer
 - ArcGIS Server Image
 - Open Street Map
 - Graphics
 - Sketch
 - Bing (BYO Key)

- **Display WebMaps**
 - ArcGIS.com
 - ArcGIS Portal (your server)



WebMaps

- **WebMap**
 - **Saved Mashup**
 - **Configured symbols**
 - **Defined Popups**
 - **Saved in ArcGIS.com**

- **or... saved in your Portal**

Demo

Making some maps



Performing Analysis

- **Using Tasks**

- **Query, Find, Identify Task**

- Search for features In the map



- **Geoprocessing Task**

- Spatial analysis using GP tools and models



- **Locator**

- Geocode and reverse geocode addresses
 - ArcGIS World Geocoder (POI, Global Find, etc.)



Performing Analysis

- **Using Tasks**
 - **Geometry Service**
 - Perform geometry operations on the server
 - **Routing Task**
 - Point-to-point and multipoint driving directions
 - Barriers, Time Windows, Best Sequence
 - **Closest Facility Task**
 - Find nearest facility
 - **Service Area Task**
 - Compute drive times and service areas



Performing Analysis



- **Native**
 - **Geometry Engine**
 - **High-performance engine for performing geometric operations on the device**
 - **Buffer**
 - **Union**
 - **Cut**
 - **Project**
 - **Geodesic**
 - **Spatial relationships**
 - **etc.**

Visualizing Results

- **Graphics**
 - Geometry
 - Attributes
 - Symbol
- **Symbols**
 - Picture, Marker, Line, Fill
 - Composite
 - Text



Visualizing Results

- Contd.
 - Renderers
 - Simple
 - Unique Value
 - Class Breaks
 - Temporal



Task Pattern

1. **Create & Connect.**

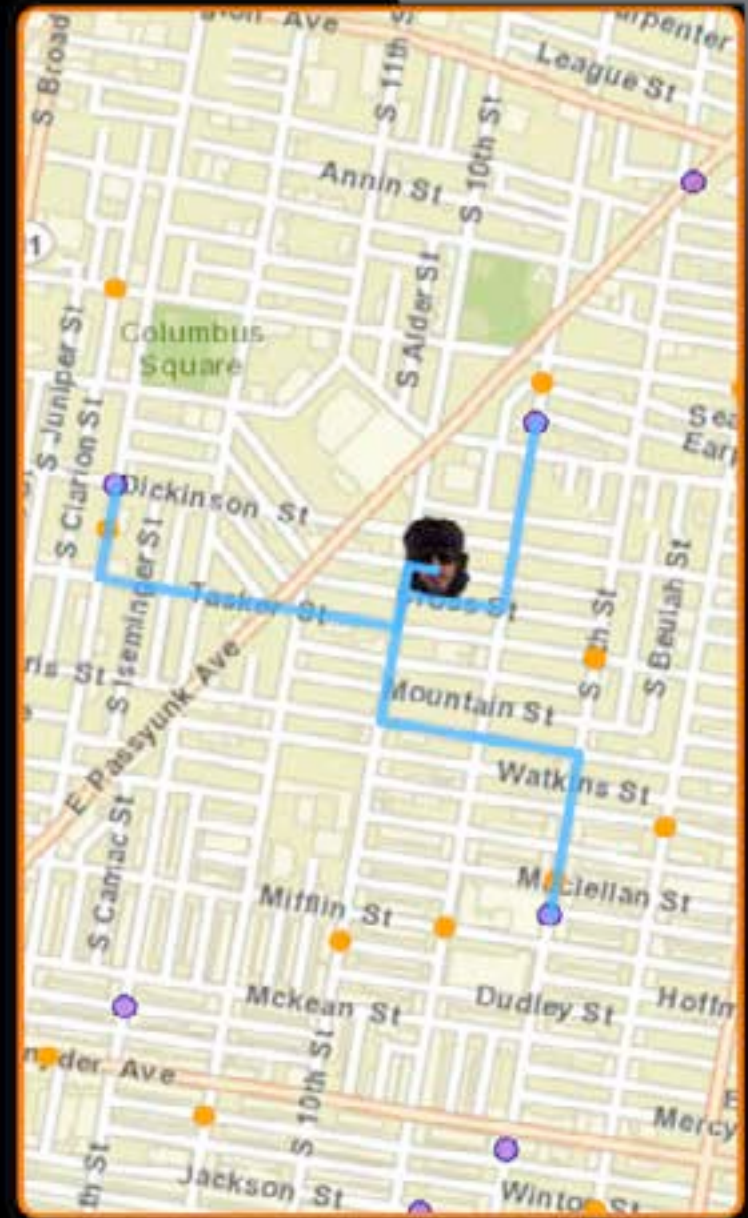
2. **Set up parameters. Send.**

3. **Get Results.**



Demo

Graphics and Tasks



Collecting Data

- **Using Feature layers & Popups**
 - **Feature Layers edit data through Feature Services**
- **Popups provide UI to**
 - **Display and edit attributes**
 - **Manage attachments**
 - **View charts, media**
- **Popups configured through WebMaps**
 - **Attributes to display & edit**
 - **User friendly aliases and hints**
 - **Formatting for numbers, dates**



Collecting Data

Using Popups

- Edit feature
 - Attributes
 - Geometry
 - Attachments



Managing Attachments

Using Popups

- View & Download
- Add
- Delete



Offline maps

Disconnected Editing and more...

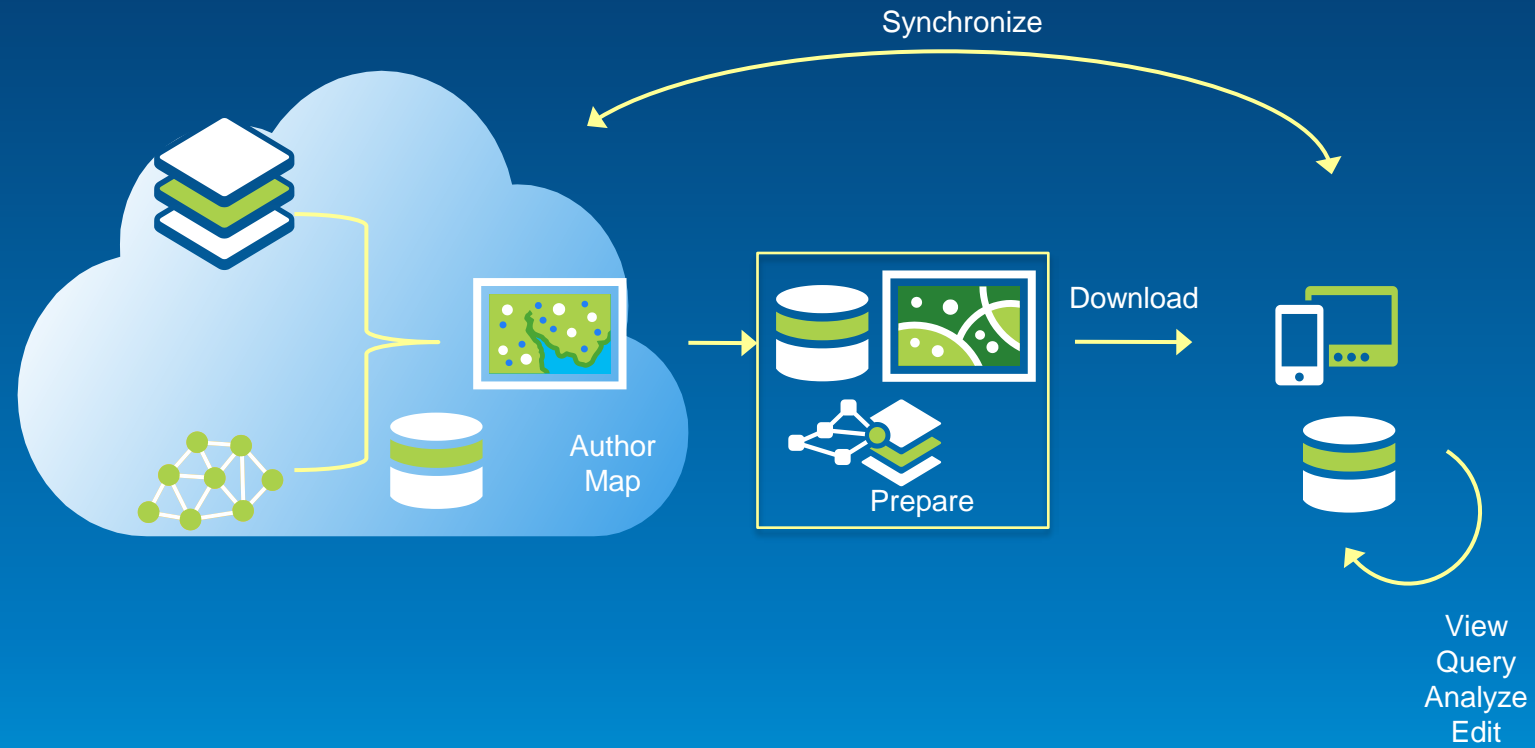


Offline ArcGIS

- **Disconnected use of the ArcGIS platform**
 - Viewing/interacting with maps
 - Querying data
 - Editing features
 - Synchronization
 - **Spatial intelligence**
 - Find places and locations
 - Get directions
 - Pre-planned or on demand workflows
 - Occasionally connected scenarios
- **All Runtime SDKs**

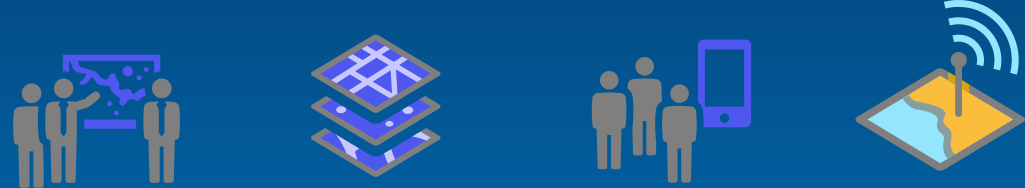


From ArcGIS Online

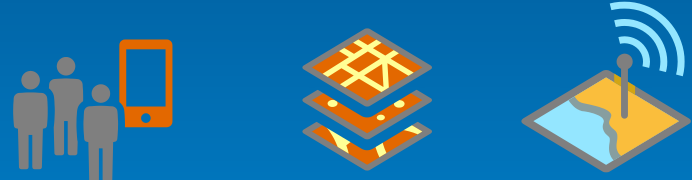


Workflows

- Pre-planned



- On-demand



- Occasionally connected



Demo

Geodatabase Sync



Demo

Offline routing

Reset Offline Routing Sample

69 mins, 28.1 miles



esri

Fastest

Shortest

Reorder



4pm, Room 145 AB

Building Offline Apps

What are we working on right now?

- **Offline Mapping**
- **Performance**
- **Geotriggers**
- **3D**
- **Data Support**
 - Kml, shp, raster
- **Vector maps**

Get more information

developers.arcgis.com

bit.ly/building-ios-apps

[**@geeknixta**](https://twitter.com/geeknixta)

www.arcgis.com

www.esri.com

[**@esri**](https://twitter.com/esri) & [**@arcgis_runtime**](https://twitter.com/arcgis_runtime)



Understanding our world.