



# Creating an Open Community Platform

Andrew Turner - @ajturner  
CTO, Esri R&D, Washington, DC

Esri Developer Summit  
Washington, DC



# ArcGIS Online for Organisations

TABLETS

PCs

MICROSOFT

OFFICE

SharePoint

EMC2

IBM Cognos

EMBED

BLOGS

TWITTER

WEB

<HTML>

APIs

APPs!

AGOL  
SERVICES

OTHER  
DATA!

DESKTOP

SERVER

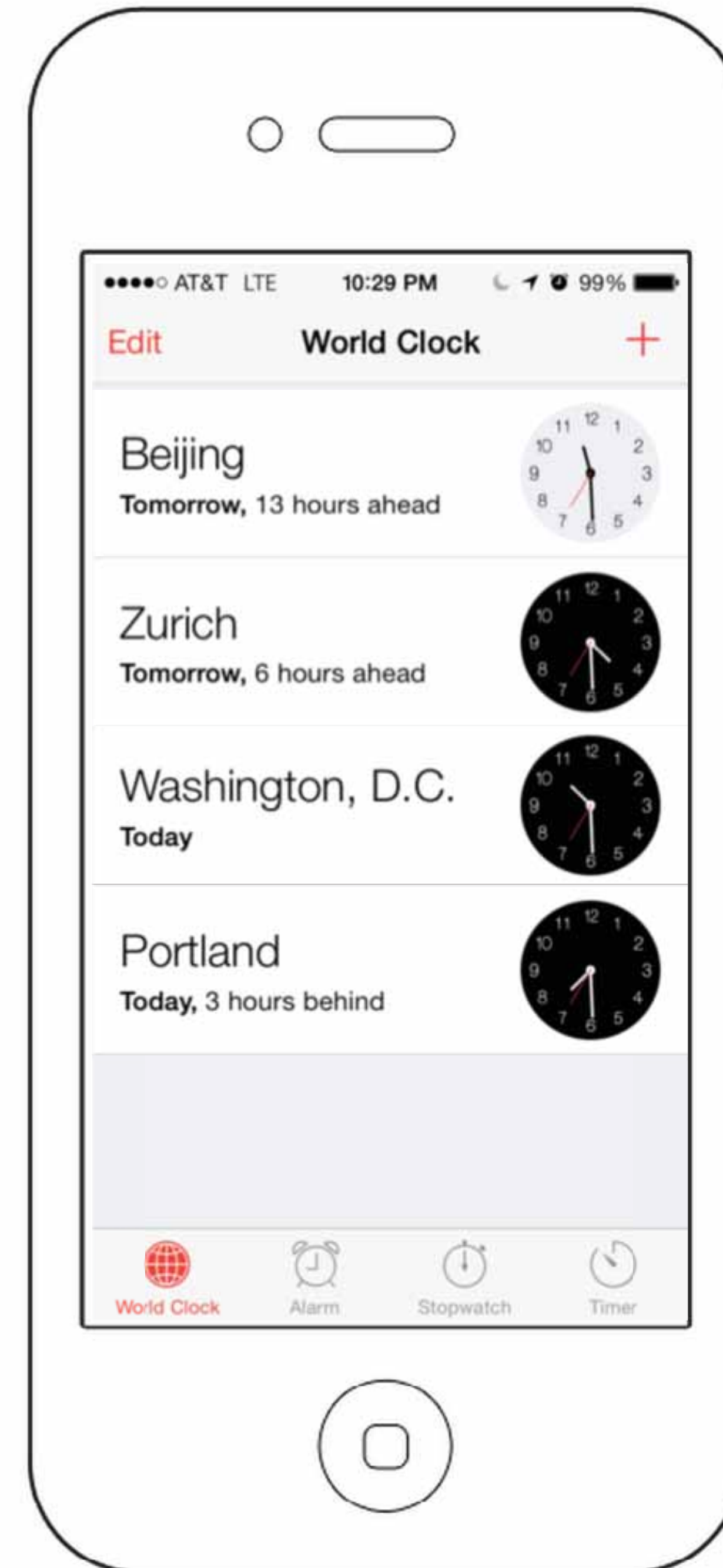
- FEATURES

- TILES

SHP  
CSV  
KML

# Esri R&D Labs

---



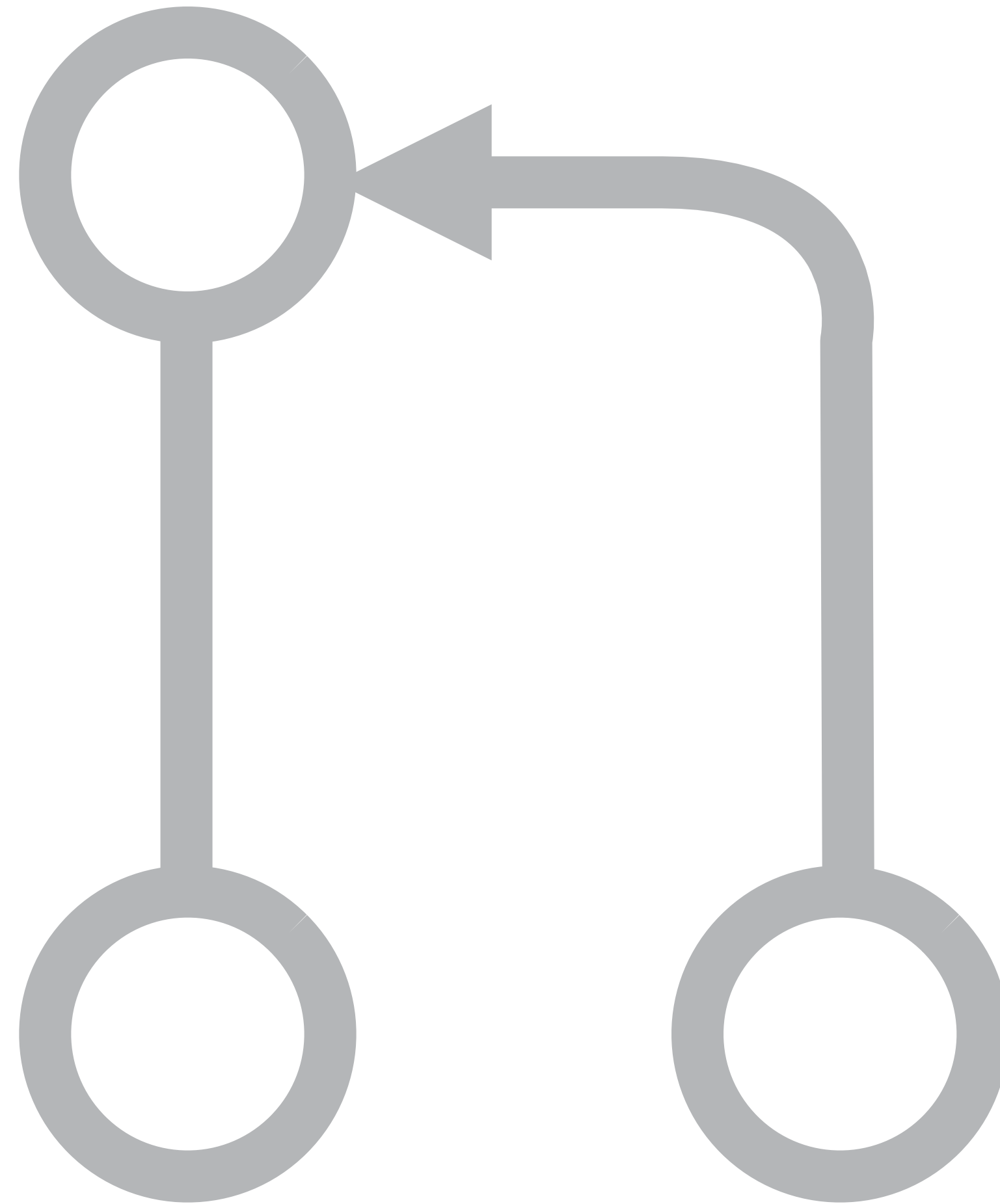


esri

Community

A close-up photograph of a large pile of colorful LEGO bricks. The bricks are in various colors including red, yellow, blue, and green. Some bricks are in sharp focus, showing their studs and holes, while others in the background are blurred. The overall scene is vibrant and colorful.

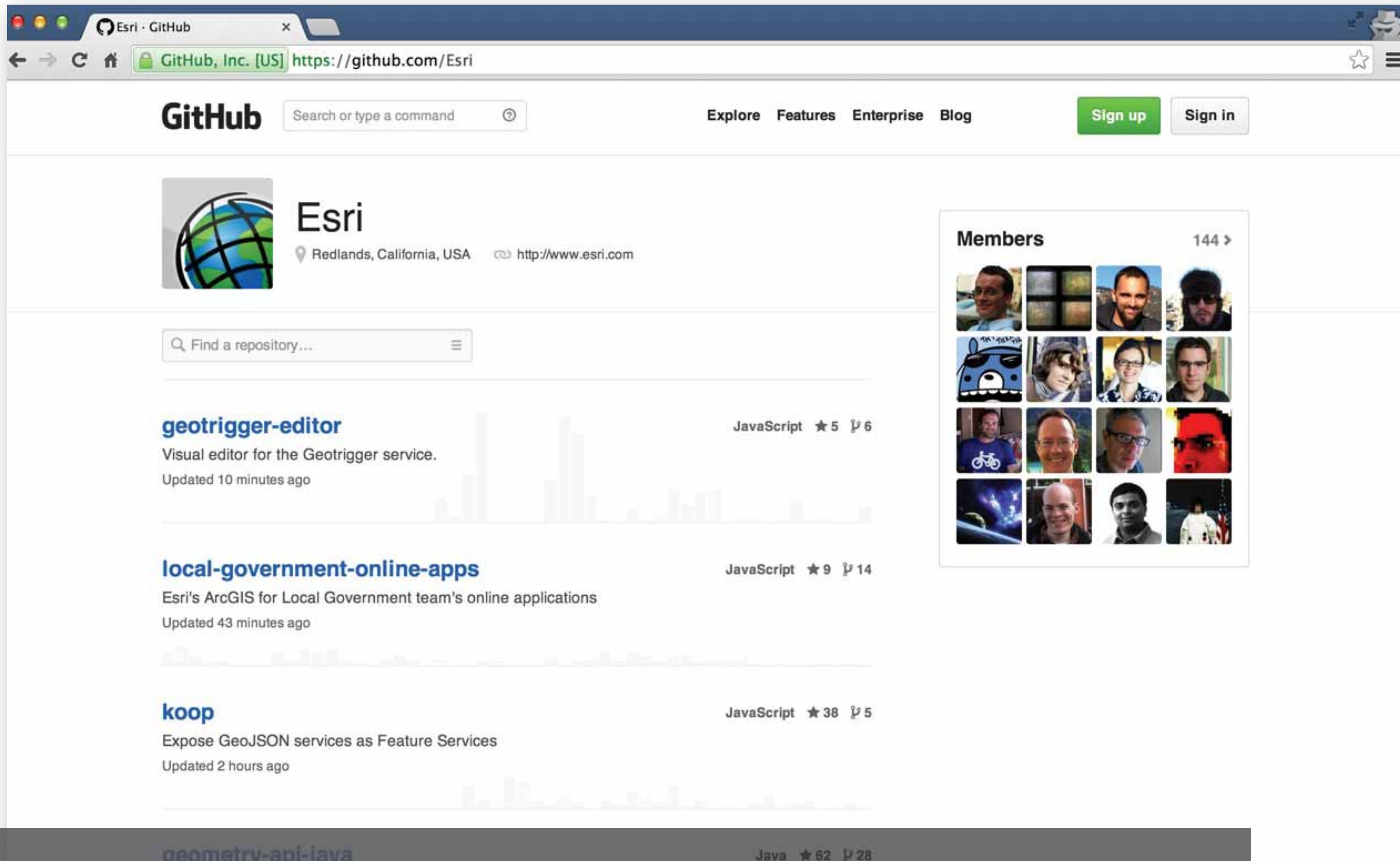
<freedom>



Participate



Collaborate



**594** Members

**193** Repos

**~1** Year

Social Coding



Search or type a command Explore Gist Help andr7059

### Trending repositories on GitHub today

Explore **Trending** Stars

Repositories Developers Trending: today

- #1 **WebGIS / arcgis-js-api** JavaScript Unstar  
ArcGIS API for JavaScript  
built by
- #2 **runtime / cocoa-common-api** Objective-C Star  
iOS/OS X Common API code  
built by
- #3 **runtime / java-android-api** Java Star  
Repo for ArcGIS android API  
built by
- #4 **runtime / java-android-sdk** Java Star  
The repo is for samples, documentation and eclipse plugin of ArcGIS Android SDK  
built by
- #5 **WebGIS / arcgis-js-sdk** JavaScript Unstar

**All languages**  
Unknown languages  
C++  
Java  
JavaScript  
Python

**Other: Languages**

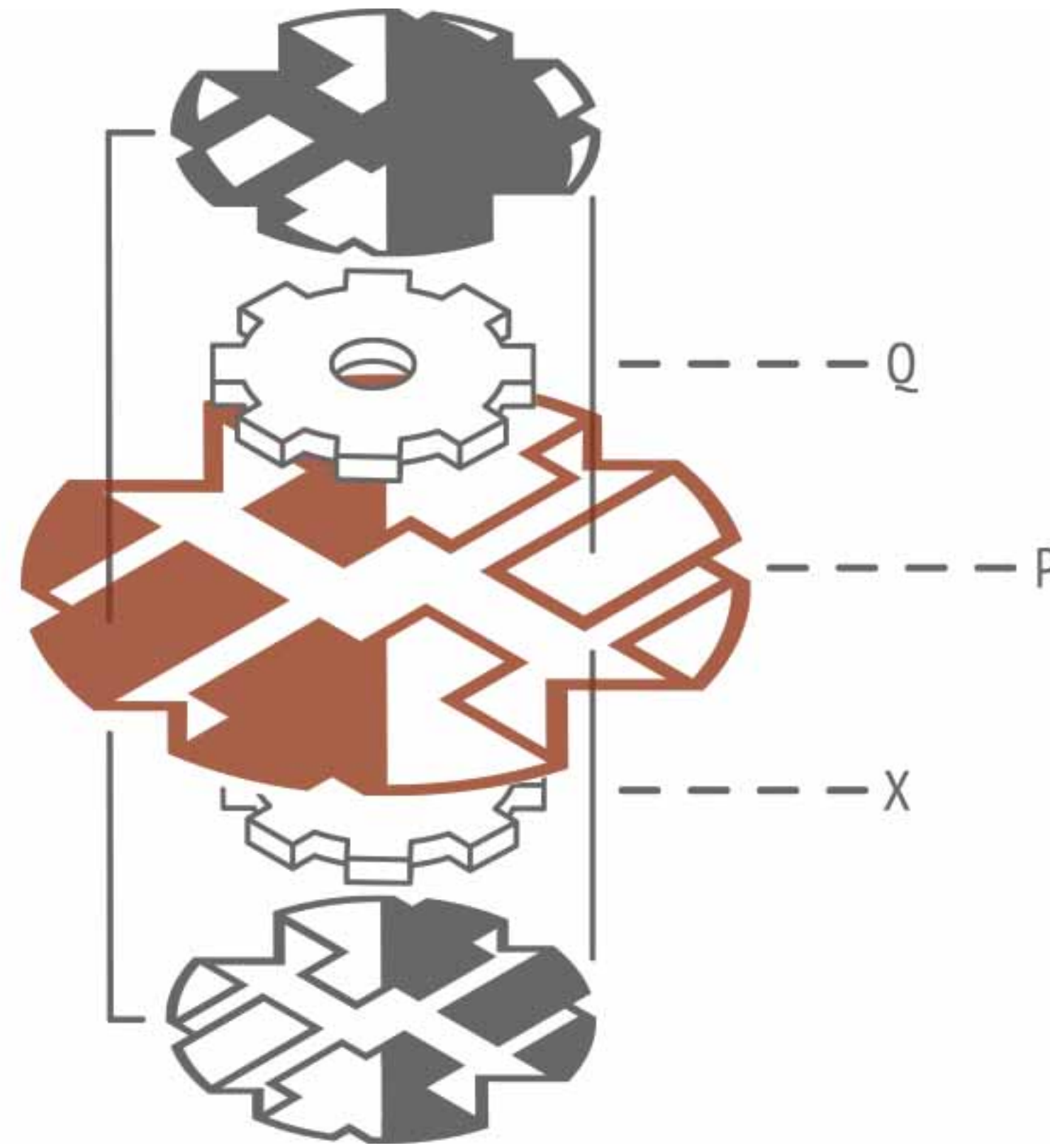
**ProTip™** Looking for most forked repositories? [Try this search](#)

# GitHub Enterprise

# Social Coding

```
eval(z='p="<"+"pre>"/ *
4e3t4jnt4qj24xh2 x/* #*
9h243pdxt41csb yz/*#####*
r24".split(4)){/* #####*
eInt(n[y],36)+/*###
(r=!r,i=0;t[a/* ##
th(Math)x-= /* ##*
new Date/1e3/*
~(32*sin(o)/*
+60] =-~ r);/*
x;)p+=" *#"/ *
]]||(S=("eval"/*
it(B = "\\ \\ \\")./* ##
(Q="\ ' ").join(B+Q/*##
+61*y-1]).fontcolor/*#*
03B");document.body.innerHTML=p+=B+" \\n"}setTimeout(z)')//m1k\
*## */;for(y in n="zw2416k\
*##### */42kty24wrt413n243n\
*##### */43iyb6k43pk7243nm\
##### */for(a in t=pars\
*##### */(e=x=r=[]))for\
#### */]>i;i+=.05)wi\
*##### */.05,0<cos(o=\
*##### */-x/PI)&&(e[~\
** */sin(.5+y/7))\
* */for(x=0;122>\
* */[e[x++]+e[x++\
* */+"(z=\ ' "+z.spl\
* */join(B+B).split\
*/)+Q+")//m1k")[x/2\
* */(/ \\w/.test(S)&&"#\
```

Open **Source**

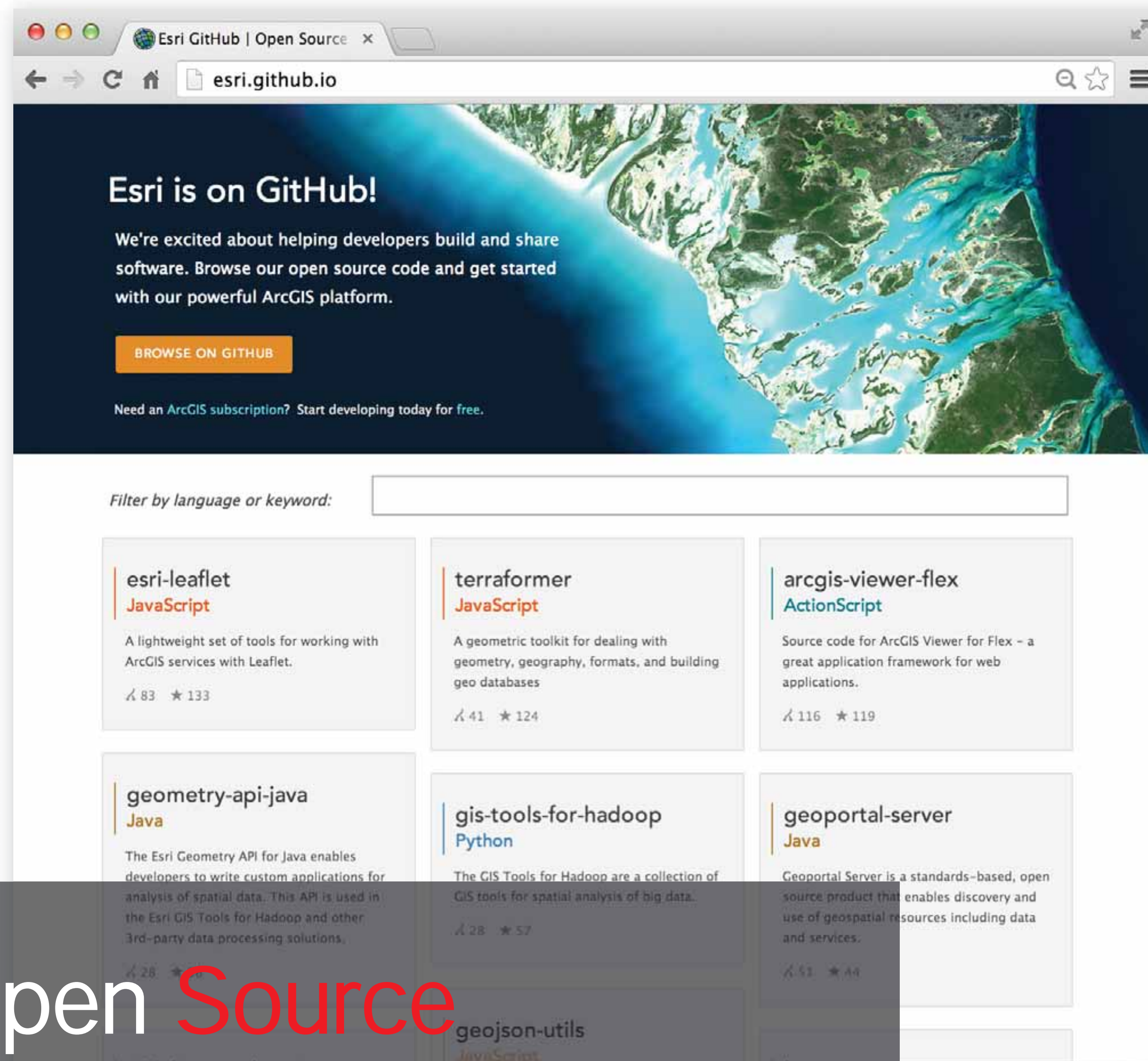


Open **Data**

Open **Content**

Open **Standards**

Open **Initiatives**



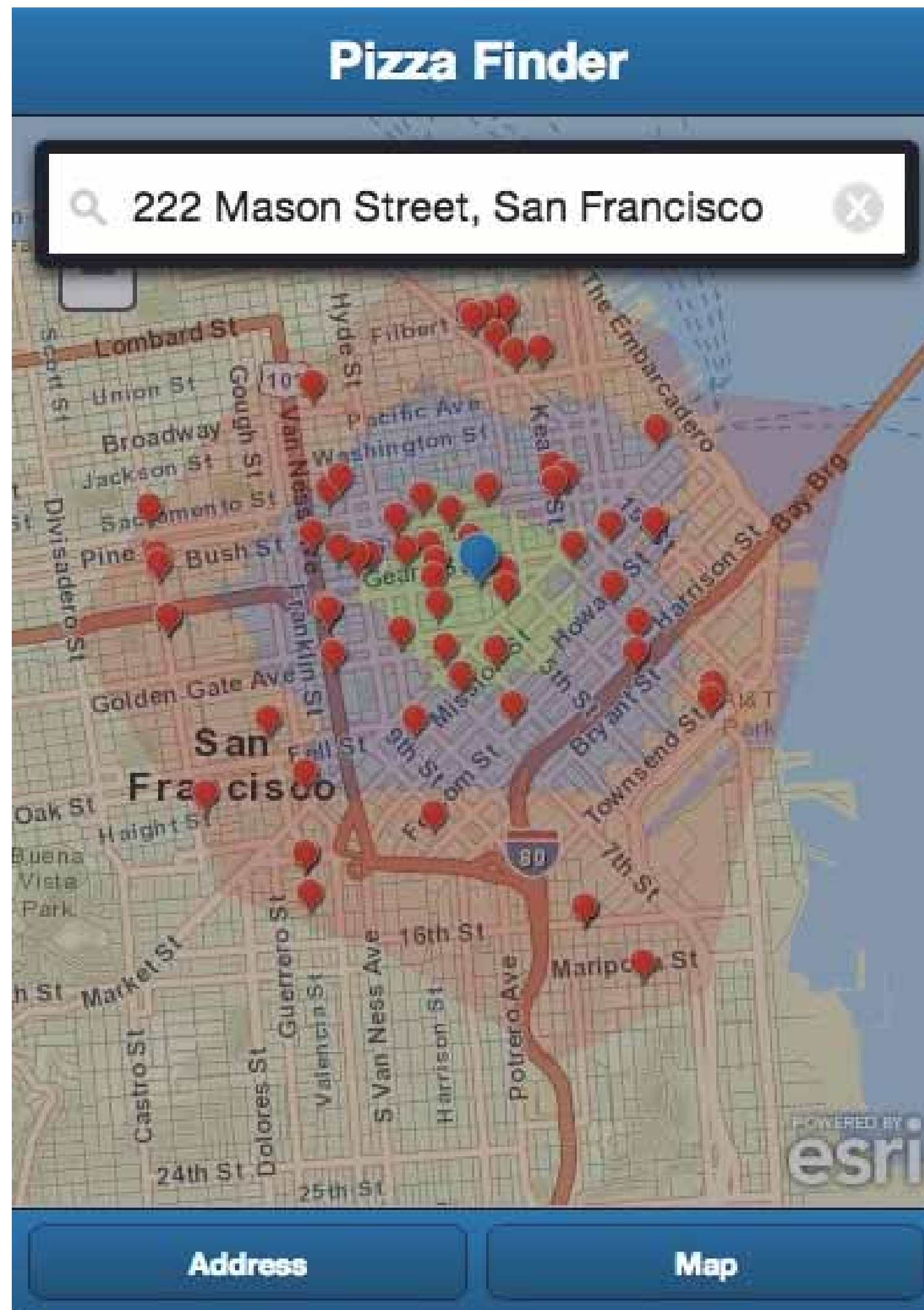
esri.github.io

mobile  
desktop  
web  
apps  
JavaScript  
C++ / C#  
Java  
Python  
Ruby  
Obj-C  
R  
VB  
Silverlight  
Actionscript

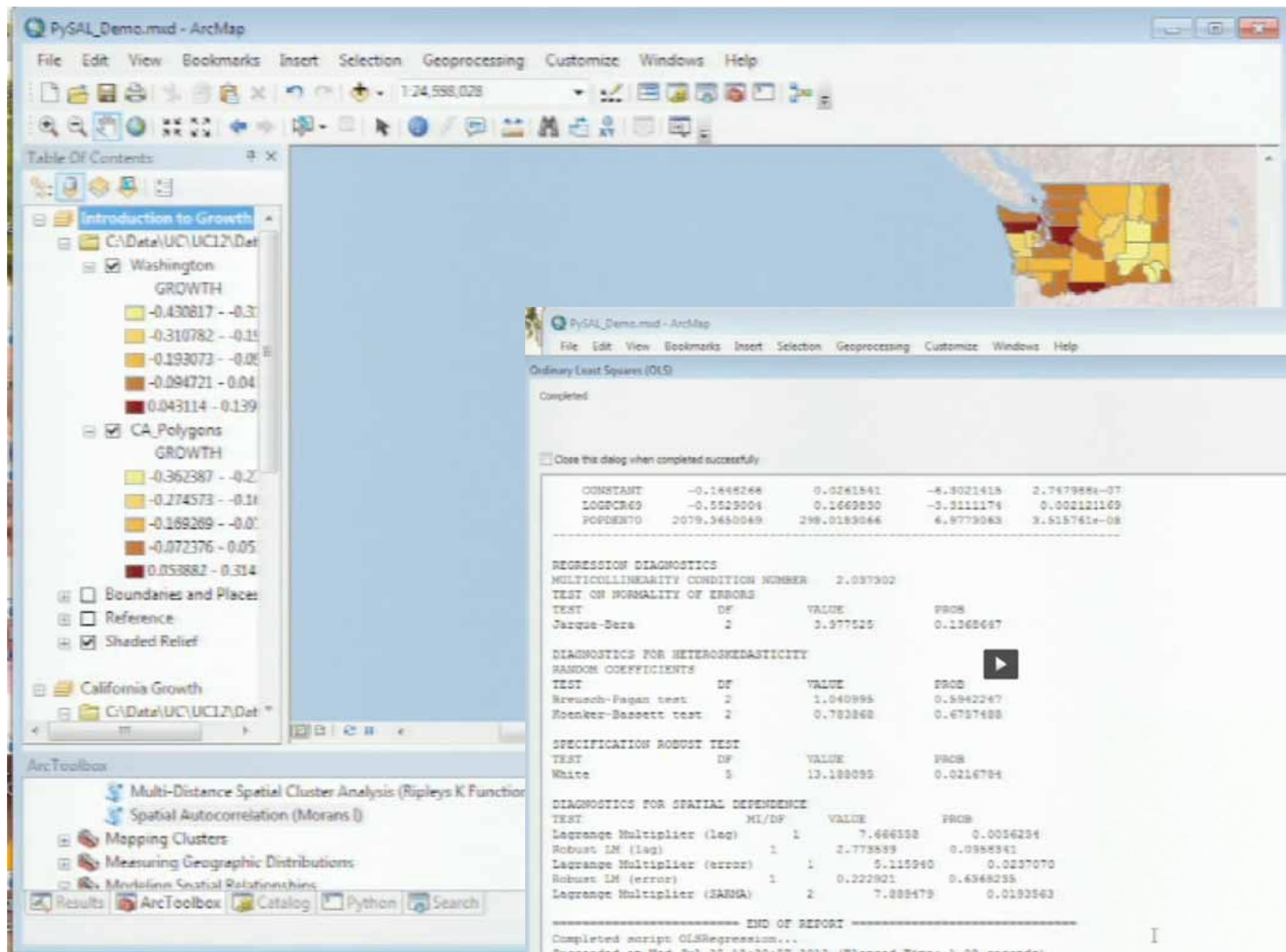
Open Source



<https://github.com/Esri/quickstart-map-ios>



<https://github.com/Esri/sencha-touch-map-checkin-js>



<https://github.com/Esri/R-toolbox-py>

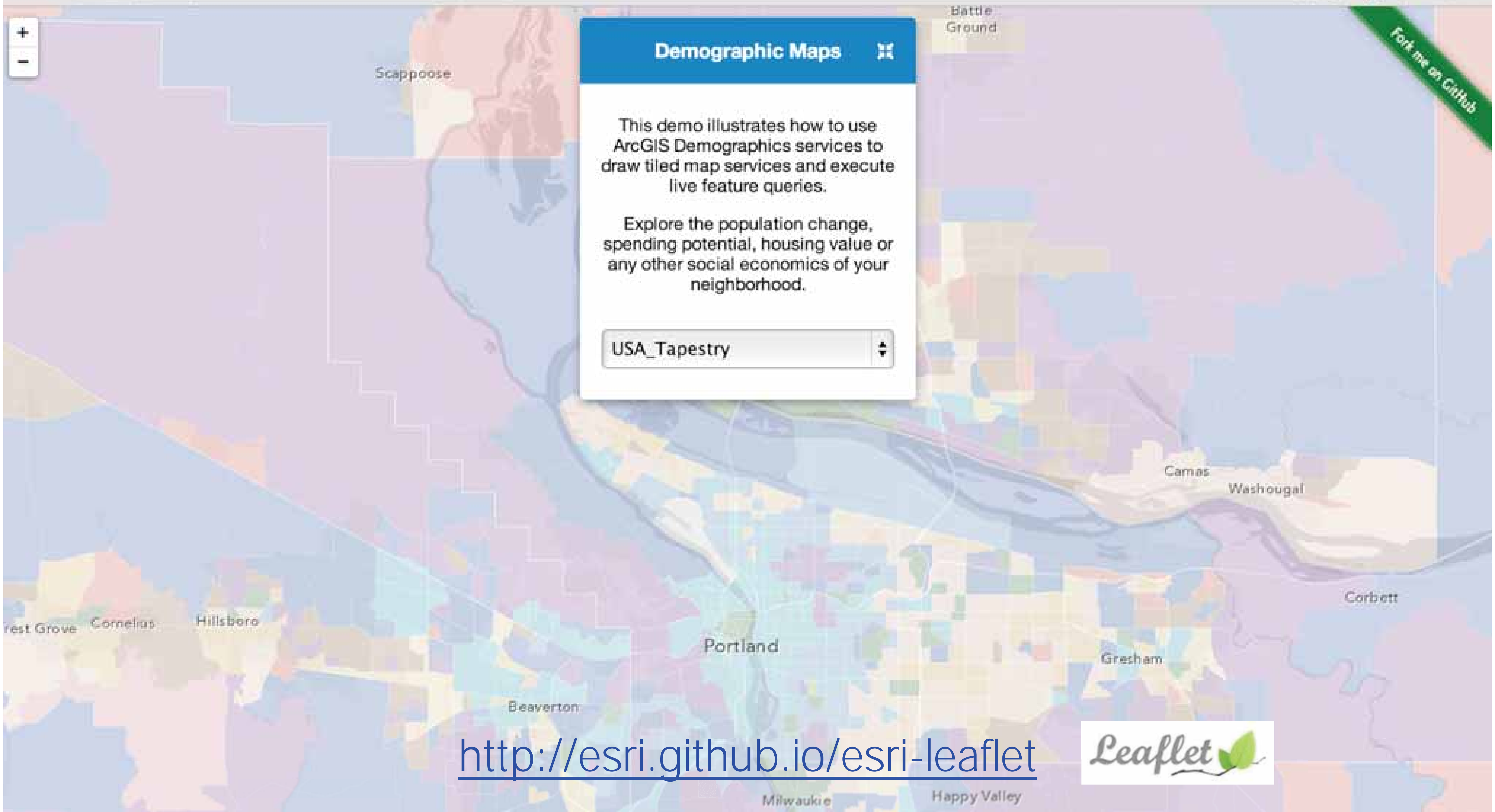


**Demographic Maps**

This demo illustrates how to use ArcGIS Demographics services to draw tiled map services and execute live feature queries.

Explore the population change, spending potential, housing value or any other social economics of your neighborhood.

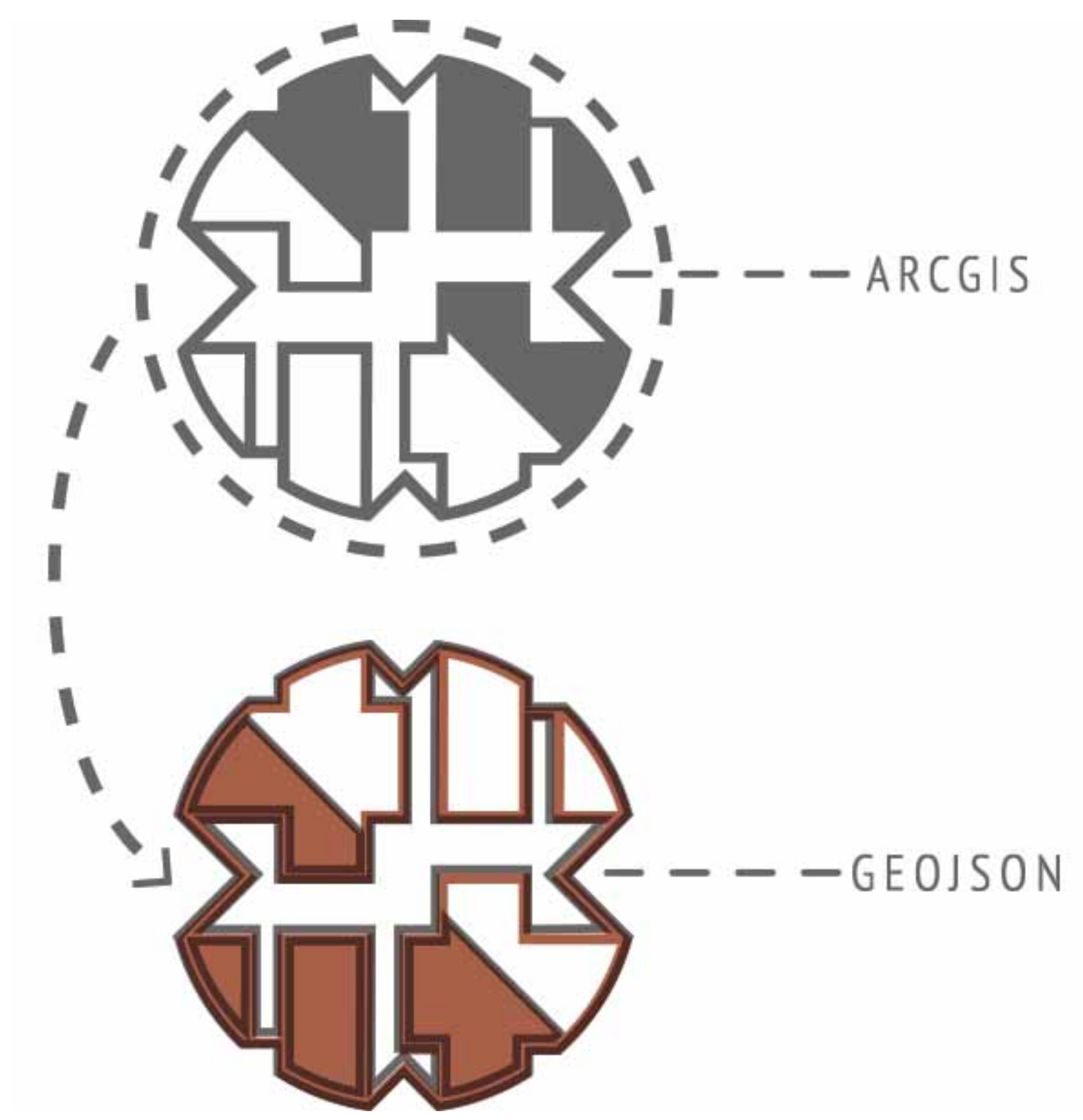
USA\_Tapestry



<http://esri.github.io/esri-leaflet>







Terraformer.io

CityOfPhiladelphia / phl-open-geodata

branch: master | phl-open-geodata / school\_facilities

Added School Facilities

mheadd authored 6 months ago

- shapefile Added School Facilities
- README.md Added School Facilities
- philadelphiaschool\_facilities... Added School Facilities
- philadelphiaschool\_facilities... Added School Facilities
- philadelphiaschool\_facilities... Added School Facilities

README.md

## School facilities

### Summary

Data includes points identifying public schools, charter schools, many private schools, and other educational facilities. The types of data were extended from previous schools layers in order to include...

ArcGIS - My Map

www.arcgis.com/home/webmap/viewer.html?url=http://koop.dc.esri.com/github/CityOfPhila...

MODIFY MAP | SIGN IN

Details | Basemap | Print | Measure | Find address or place

grade_org	9-12
facil_tele	215-276-2300
zipcode	19120
tencode	8783006465
st_code	87,830
facil_type	School
institt_typ	Archdiocese
enrollment	1.151
Zoom to	

Philadelphia



State of New Jersey, Esri, DeLorme, HERE, IPC, TomTom, USGS, NGA, U.S. Navy, NOAA, NPS, USFWS, USGS, NGA, U.S. Navy, NOAA, NPS, USFWS



Koop.dc.esri.com

# GIS tools for Hadoop on Github

 **ArcGIS**  **Geoprocessing Tools** **Connect From ArcGIS to Hadoop using GP**

**GIS Tools for Hadoop**  
**(Use samples with Hadoop & Hive to get started)**

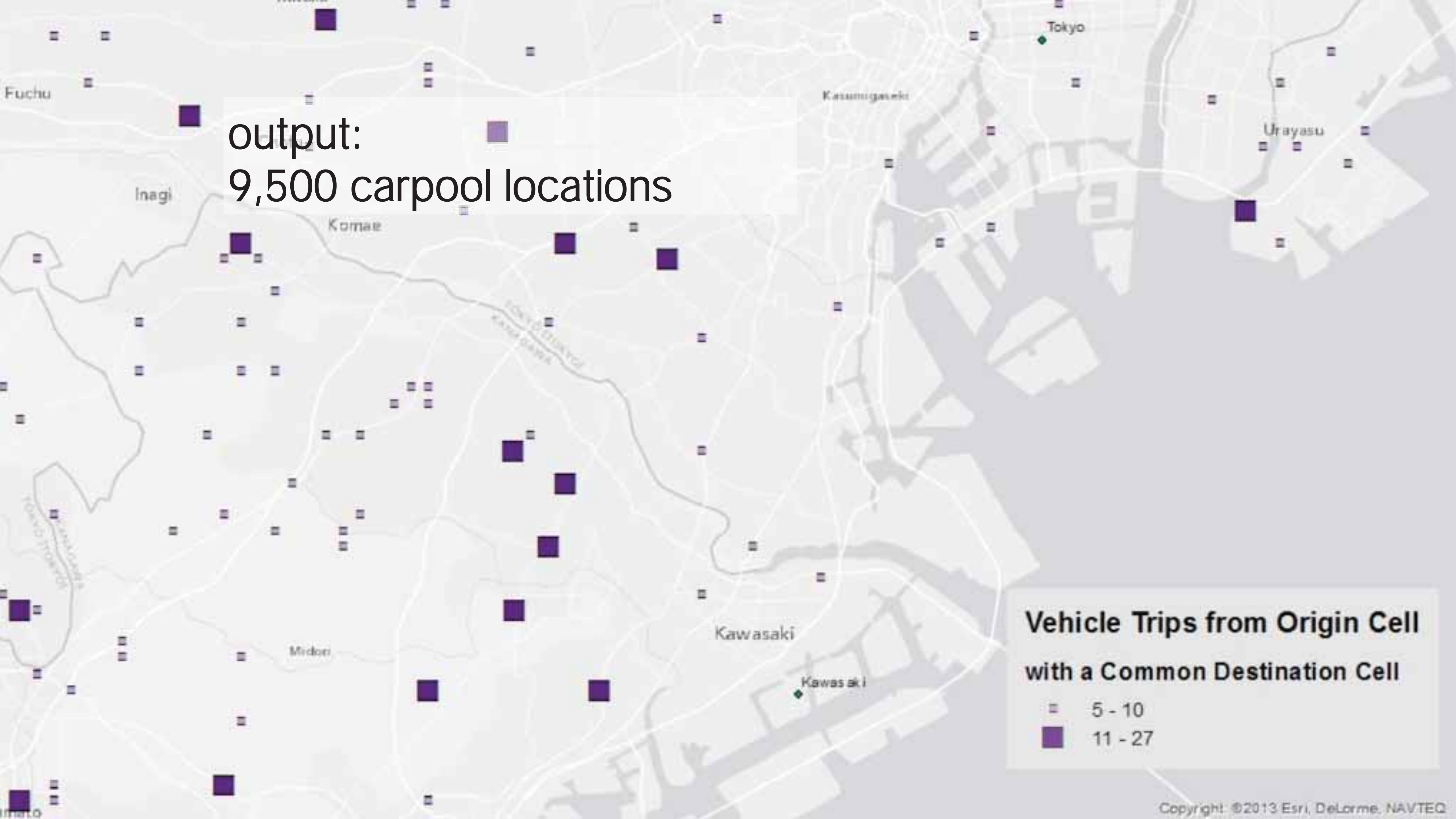
 **HIVE**  **Spatial Framework** **Run Hive Queries with spatial operators**

 **hadoop**  **Esri Geometry API** **Build Map/Reduce Spatial Apps in Java**

# 自動車の相乗り”

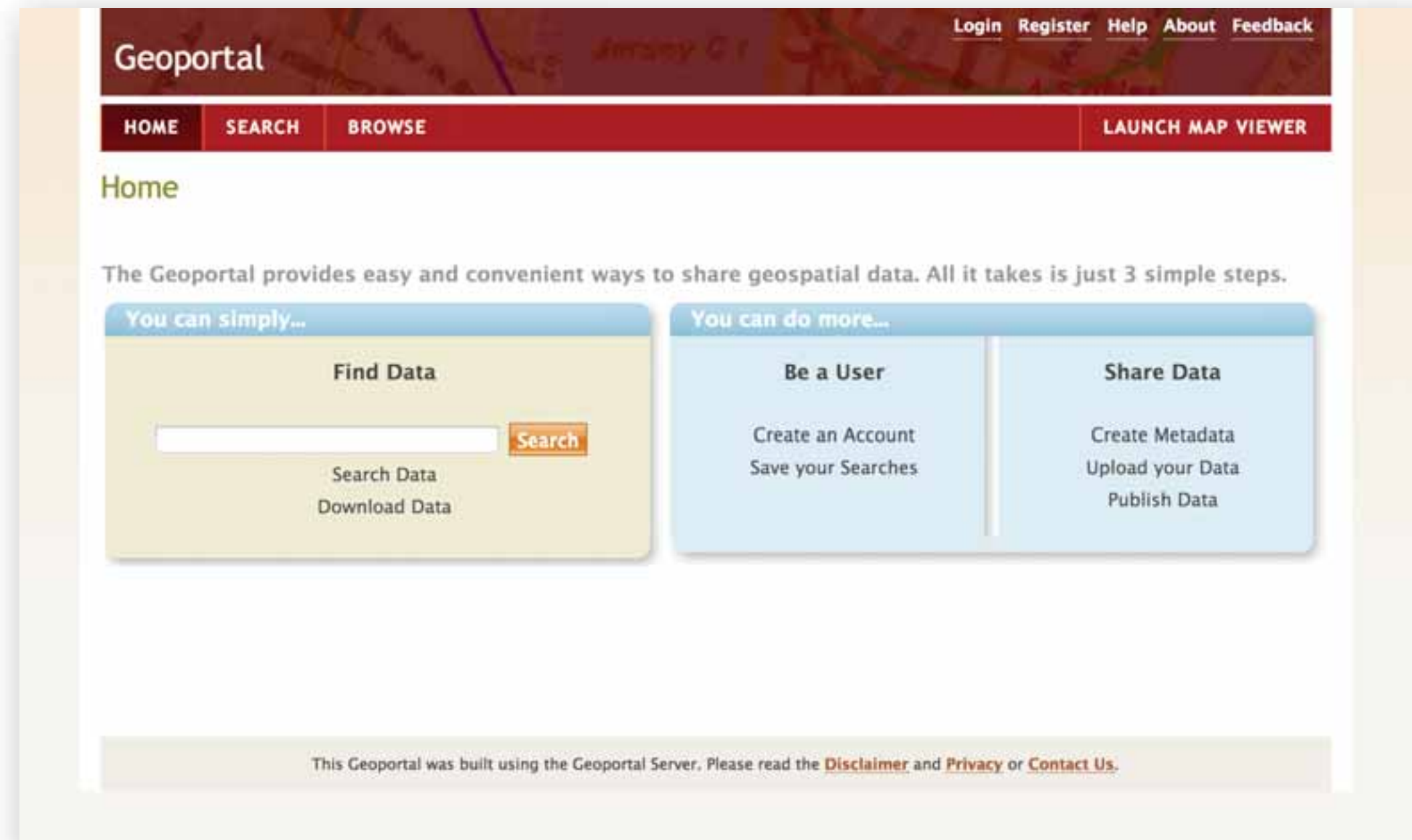


output:  
9,500 carpool locations

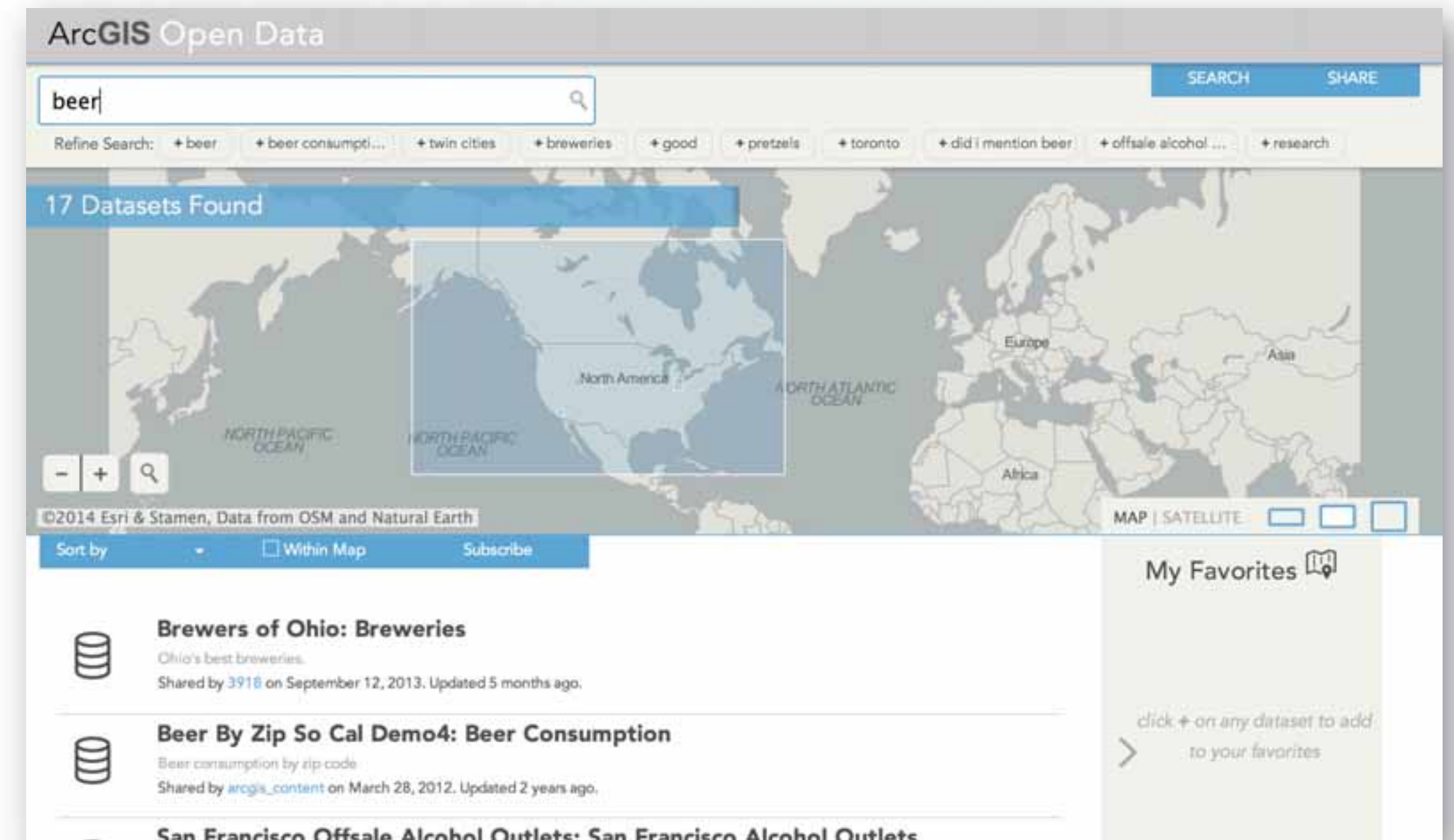


**Vehicle Trips from Origin Cell  
with a Common Destination Cell**

□	5 - 10
■	11 - 27



GeoPortal



ArcGIS Open Data

Open Data

SEARCH SHARE

## Welcome to ArcGIS Open Data



©2014 Esri & Stamen, Data from OSM and Natural Earth

## Explore open data from all over the world.

### Collaborate.

Share maps and data with your organization and the general public. Combine your efforts and work together to make beautiful and informative maps.

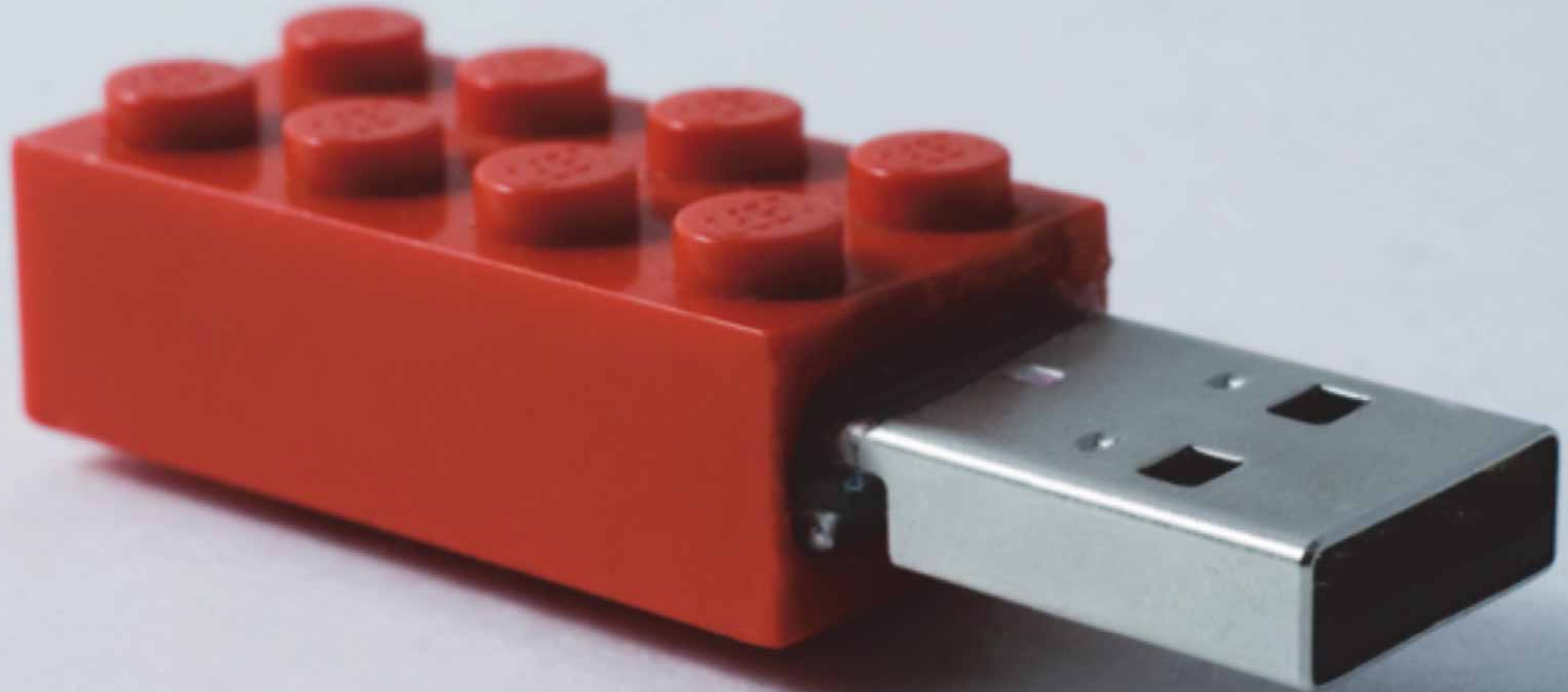
### Discover New Data.

Quickly search host of data and geographic content. Use premade maps and data with your own content to bring new meaning to your existing geographic data.

### Visualize and Analyze.

Edit, display, and analyze geographic information in an intuitive online editor. Discover new narratives and connections in your data by adding and editing multiple layers.

# Open Standards





## EdCommunity

[Overview](#)

### ArcLessons

[Licensing](#)

[Search](#)

[Submit A Resource](#)

[Resource Collections](#)

[Case Studies](#)

[E-books](#)

[Videos and Webinars](#)

## Licensing

[Sign in](#) | [Create Account](#)

### History

Beginning in 2012, Esri president Jack Dangermond authorized the Education Industry Team (Ed Team) to license the educational resources we create under the Creative Commons **Attribution-Non-Commercial-Share-Alike license**. Every year, Ed Team members create dozens of educational videos, lessons, and learning activities, most of which are freely available through <http://edcommunity.esri.com>. Though the works remain copyrighted to Esri, Creative Commons licensing allows users to copy, adapt, and/or distribute them freely. License terms oblige users to (a) acknowledge Esri's original authorship; (b) refrain from using licensed resources for commercial purposes; and (c) share derivative works freely using the same license. - See more at: <http://blogs.esri.com/esri/gisedcom/?s=creative+commons#sthash.YINLbbte.dpuf>



### License

This is a human-readable summary of (and not a substitute for) the **license**.

Open **Content**

[edcommunity.esri.com](http://edcommunity.esri.com)

# Open Community

---

[github.com](https://github.com/esri)/esri

#esri [irc.freenode.net](https://irc.freenode.net)

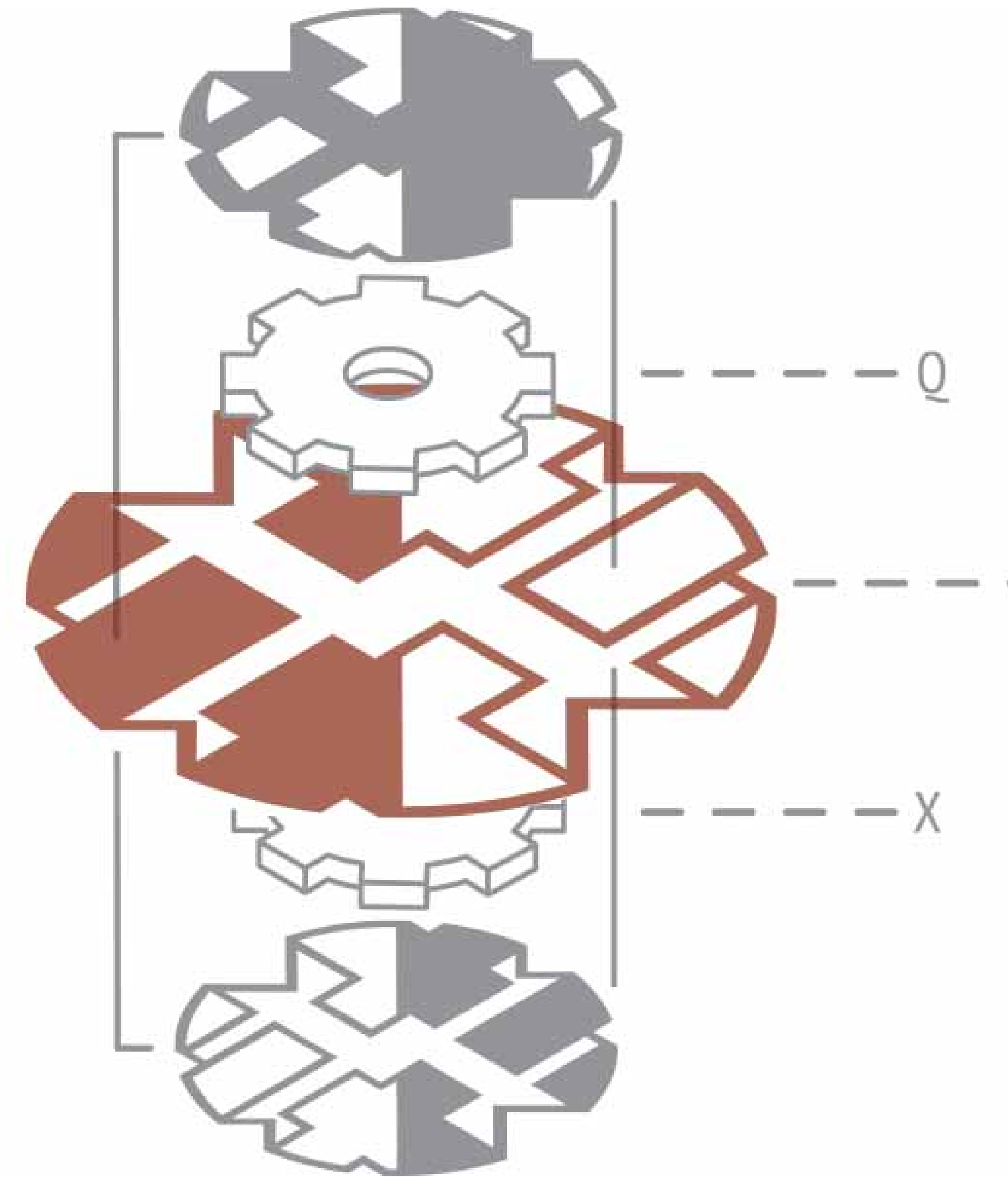
@esridc @esripdx twitter





# Geography as an Open Platform

Andrew Turner - @ajturner  
andrew@esri.com





esri

Understanding our world.