



AppStudio for ArcGIS

Building Native Cross-Platform Apps

Sathya Prasad

sprasad@esri.com | [@sathyaprasad](https://twitter.com/sathyaprasad)

Esri Developer Summit
Washington, DC

Introducing

AppStudio for ArcGIS

Easiest way to create cross-platform native
GIS/Mapping/Location applications



- **A new platform to build focused cross-platform apps for devices and systems**
- **Targeted for both Developers and Non-Developers alike**
- **No development skills required to get started**
- **Choose from a gallery of application templates or build your own**
- **Configure and add your own assets (Branding)**
- **Deploy to app stores or in your organization**

What is AppStudio for ArcGIS?



AppStudio for ArcGIS

Build one App, deploy across multiple platforms and form factors



- ArcGIS Runtime API
- Leverages Portal, Server and Online
- Developer Productivity Tools
- Quick start templates
- Player to test and deploy
- Cloud Make
- Common set of UI/Widgets
- Ease of Web and Power of Native Platform

AppStudio for ArcGIS

Value for Developers
Value for Organizations
Value for Partners



App Templates



App Player



App Make



App Upload



App Framework

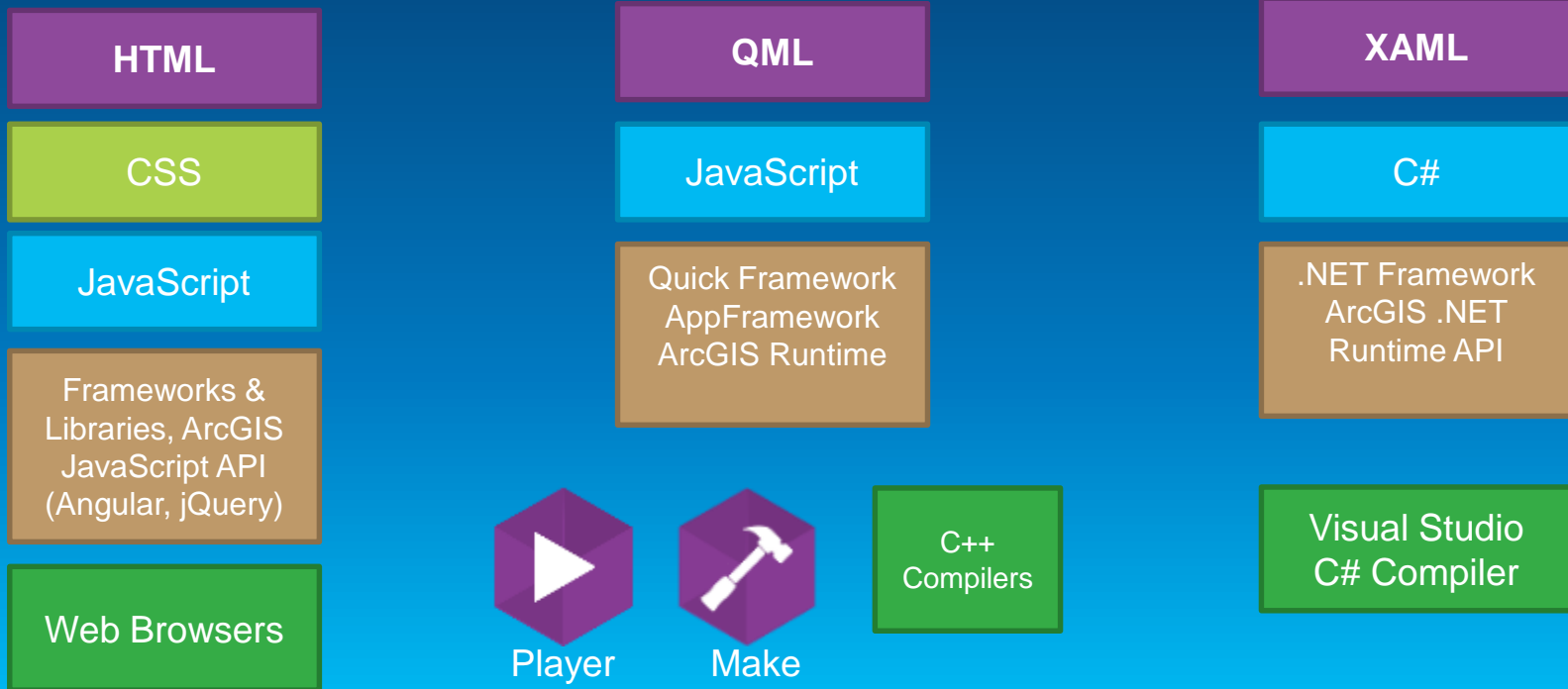


AppStudio for ArcGIS

Includes Developer Productivity Tools

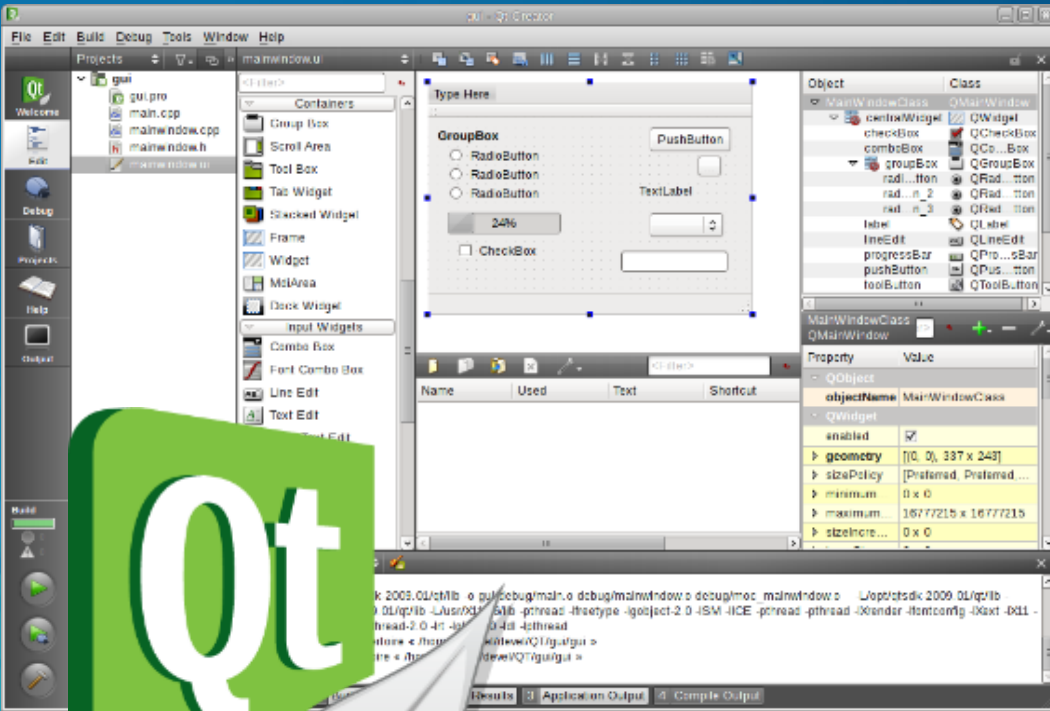
What is QML?

A JavaScript-based, declarative language for designing user interface-centric applications.



Write Apps using

- QML
 - Styles, UI, Controls
 - ...
- Assets
 - Files, Images, Data
 - ...
- JavaScript
 - Business logic
 - Events, I/O ...



AppStudio for ArcGIS

Bundled with Qt Creator

Qt Creator



- Launch from AppStudio
- Edit configuration files
- Edit QML and JavaScript code
- Context sensitive help
- Run app and other AppStudio tools

App Development Cycle

1

2

3



Awesome
App
Idea!

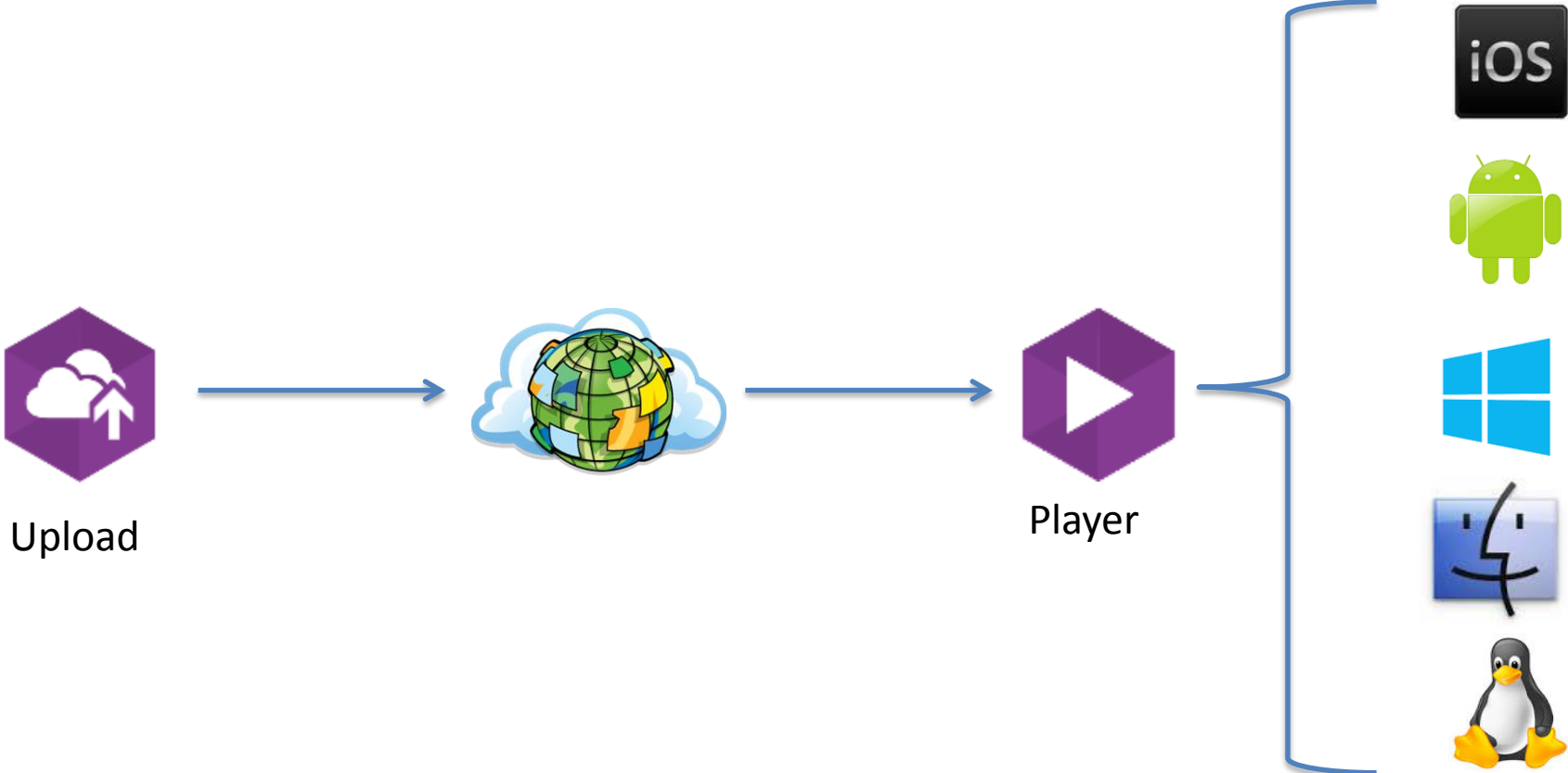
Select App
Template and
configure
options

Configure
Tinker
Edit
Run

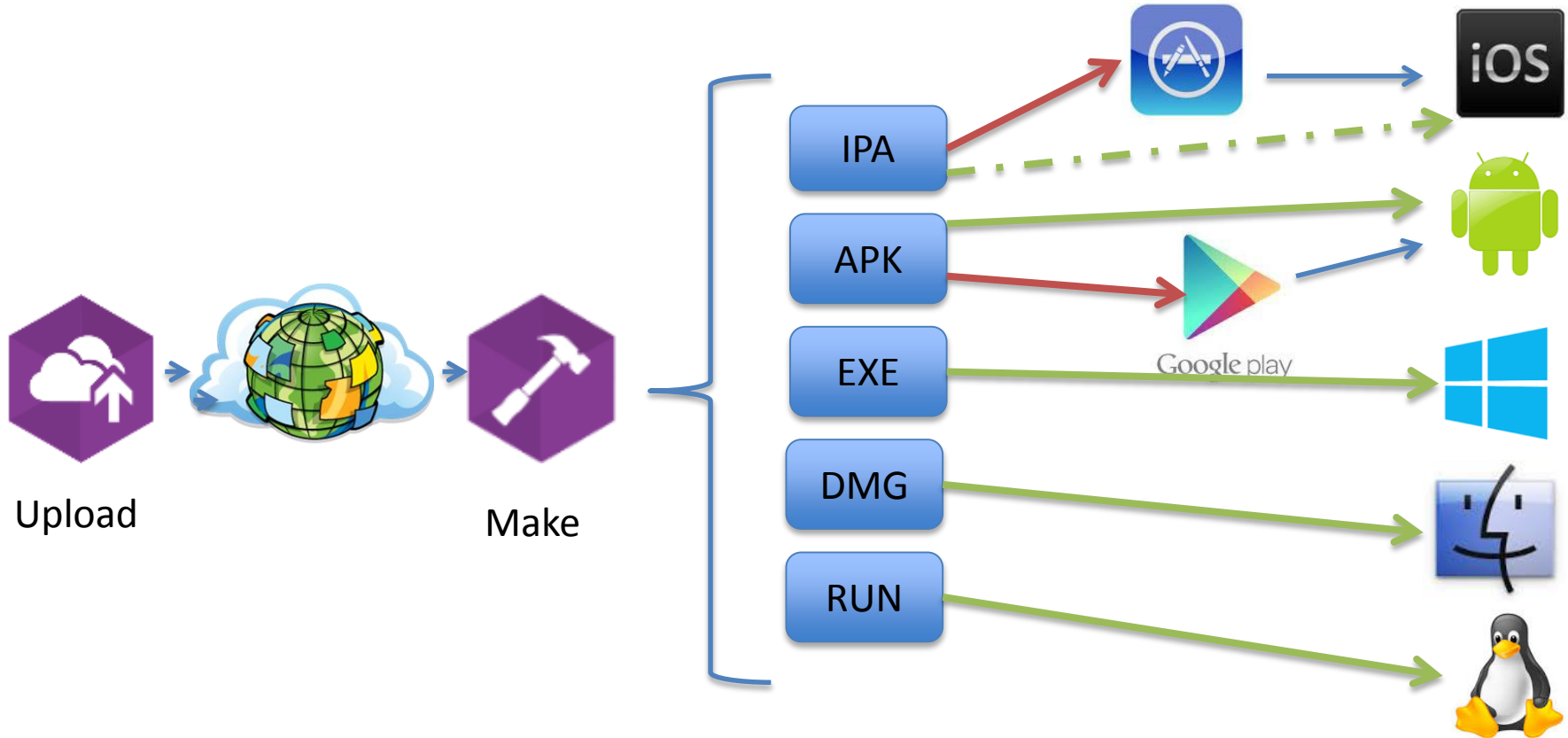
Share
Make
Publish

Ready for users
to download
and use

AppPlayer Deployment Model



Native Deployment Model



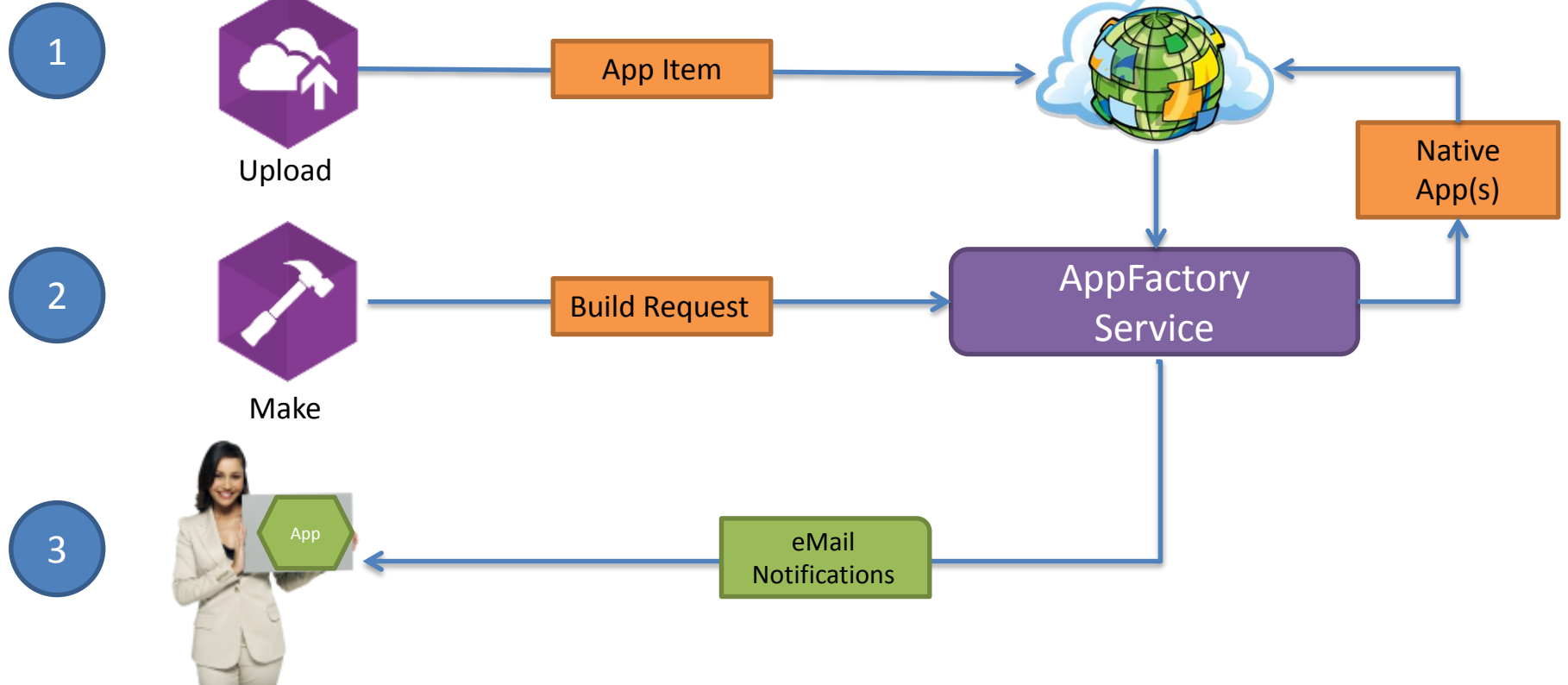
Local Make

Build the native apps on your own development systems

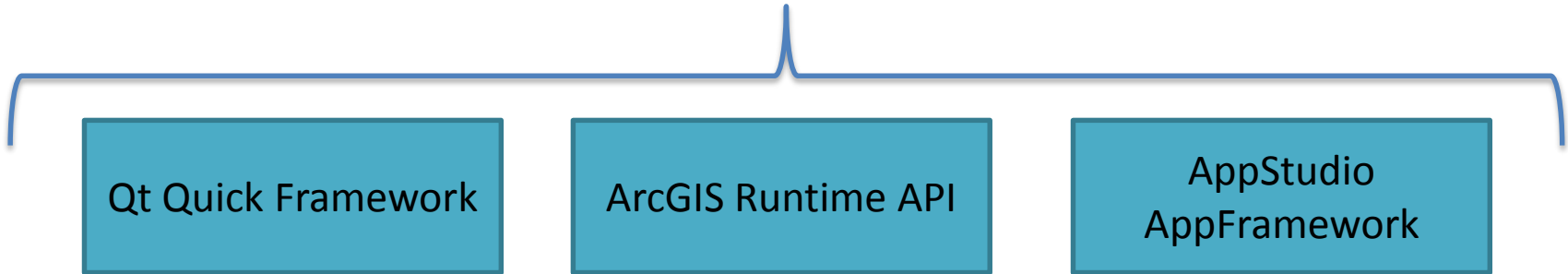
	Windows	MacOS	Linux
Target Platform			
Android	Yes	Yes	Yes
iOS	No	Yes	No
Linux	No	No	Yes
MacOS	No	Yes	No
Windows	Yes	No	No
Windows Phone	Yes	No	No

- AppStudio
- C++ Tools
- Platform Tools

How Cloud Make Works



The Stack



QML APIs

Qt Quick Framework

- Core QML Components
- UI Controls
- Positioning
- Sensors

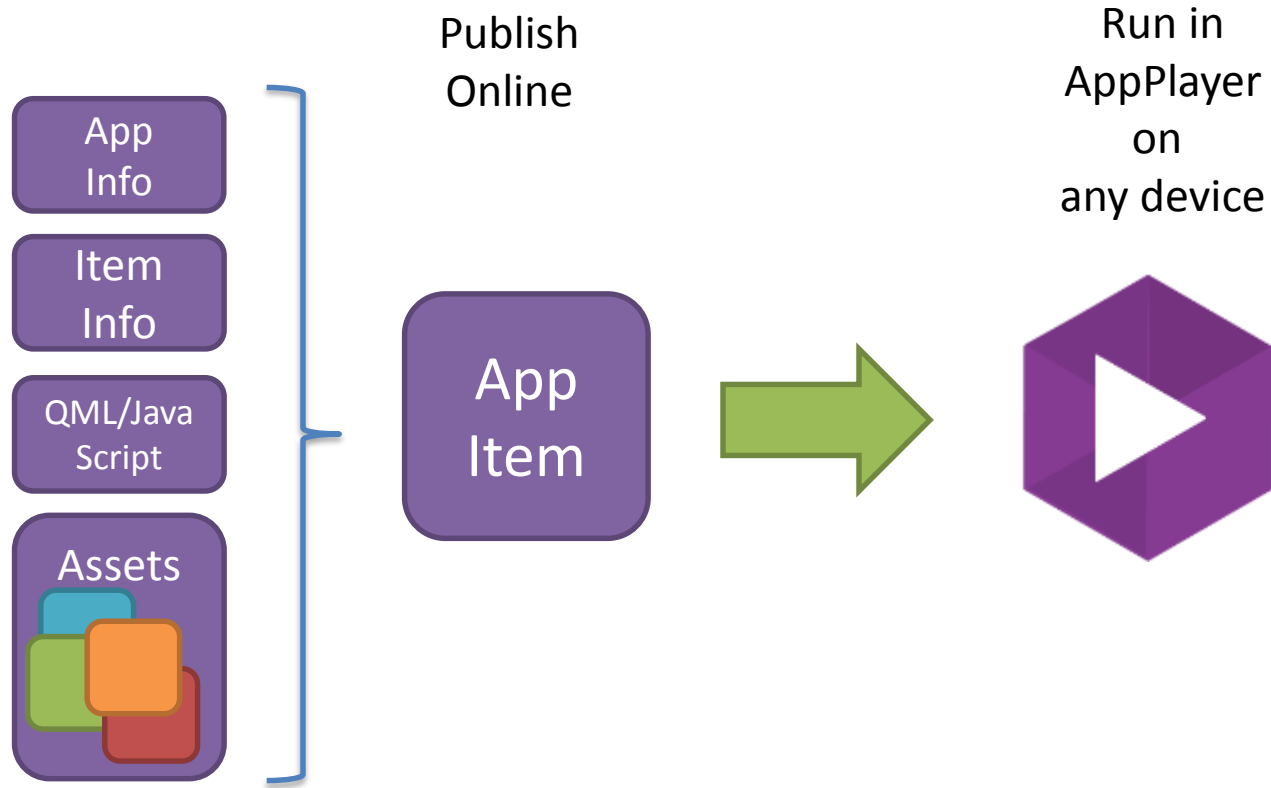
ArcGIS Runtime API

- Map Control
- Layers
- Geometry
- Portal
- Geocoding
- Network Analysis
- Geodatabase
- Symbology

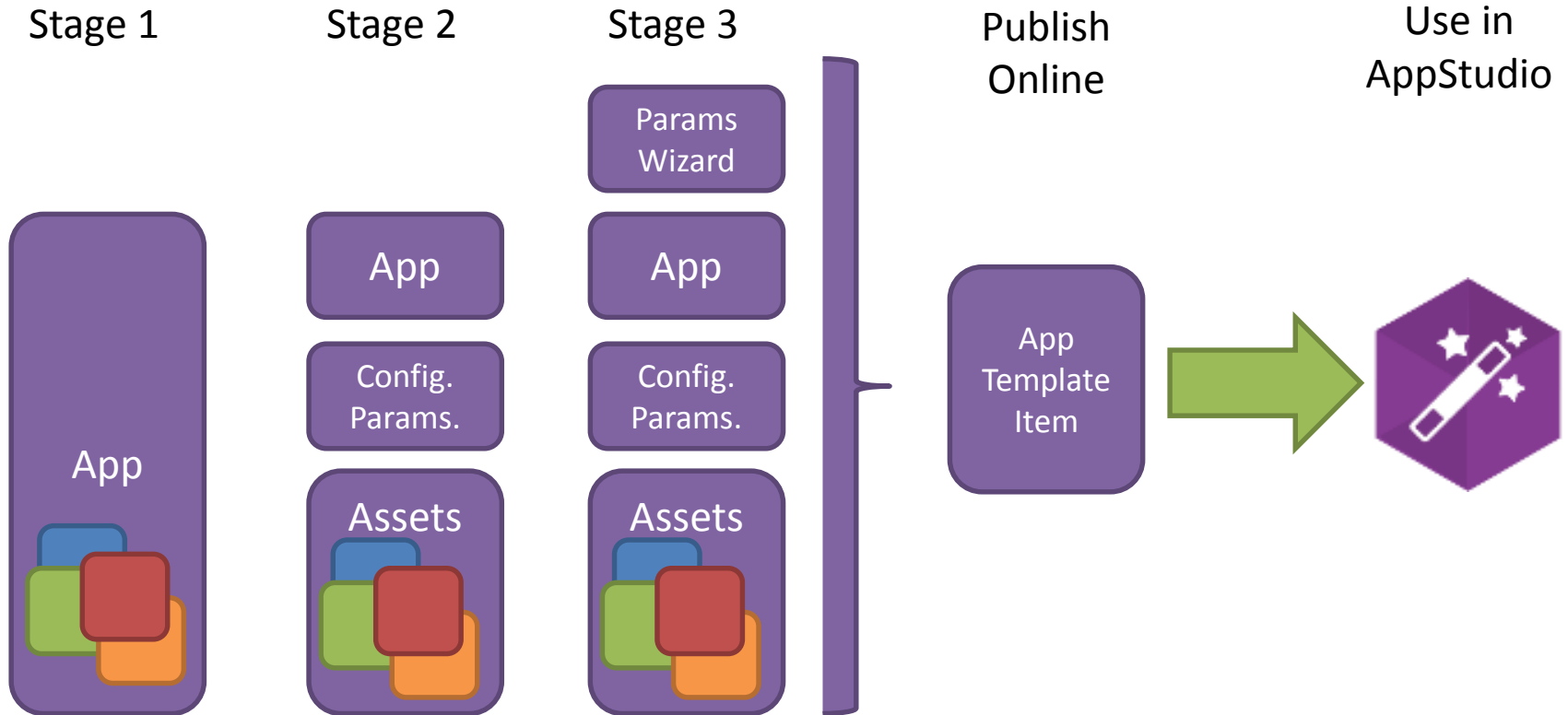
AppStudio AppFramework

- App Infrastructure
- File System Components
- Network Components
- UI Widgets
- Additional Plugins

What is an App Item?



What is an App Template?



Extensibility

QML

- Reusable QML Components
- Shared QML Modules
- JavaScript Libraries

C++

- Integrated C++ Code
- C++ Based QML Modules
- 3rd Party Libraries
- Qt Core Plugins, including –
 - Positioning
 - Sensors

Roadmap

Beta for Developer Summit

Release* for User Conference

** = Based on Your feedback*

One day Workshop on Mar 9 (Sold-out)

Early Adopter Program open

To apply: <http://bit.ly/appstudioforarcgis>

AppStudio for ArcGIS

