



Building Apps with the ArcGIS Runtime SDK for iOS

Al Pascual

**Esri Developer
Summit Europe**

11-13 November 2013
Park Plaza Riverbank London

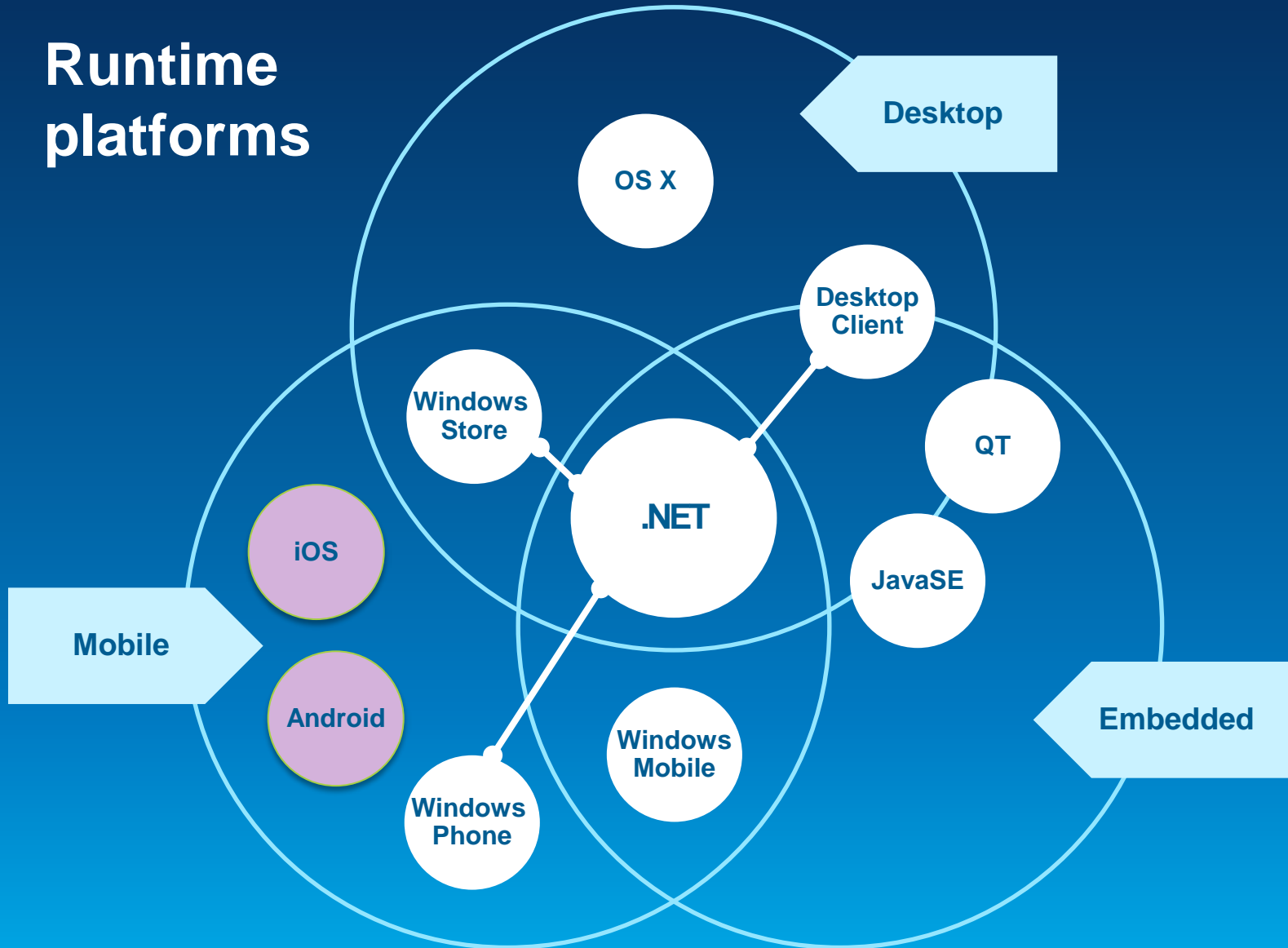


ArcGIS Runtime SDKs

10.2 Released!



Runtime platforms



They do lots...



- Blazing fast maps



- High-quality cartography and symbology



- Use maps, layers, and data from the ArcGIS cloud



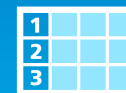
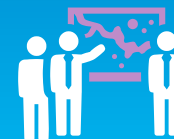
- Edit, geocode, route, and query



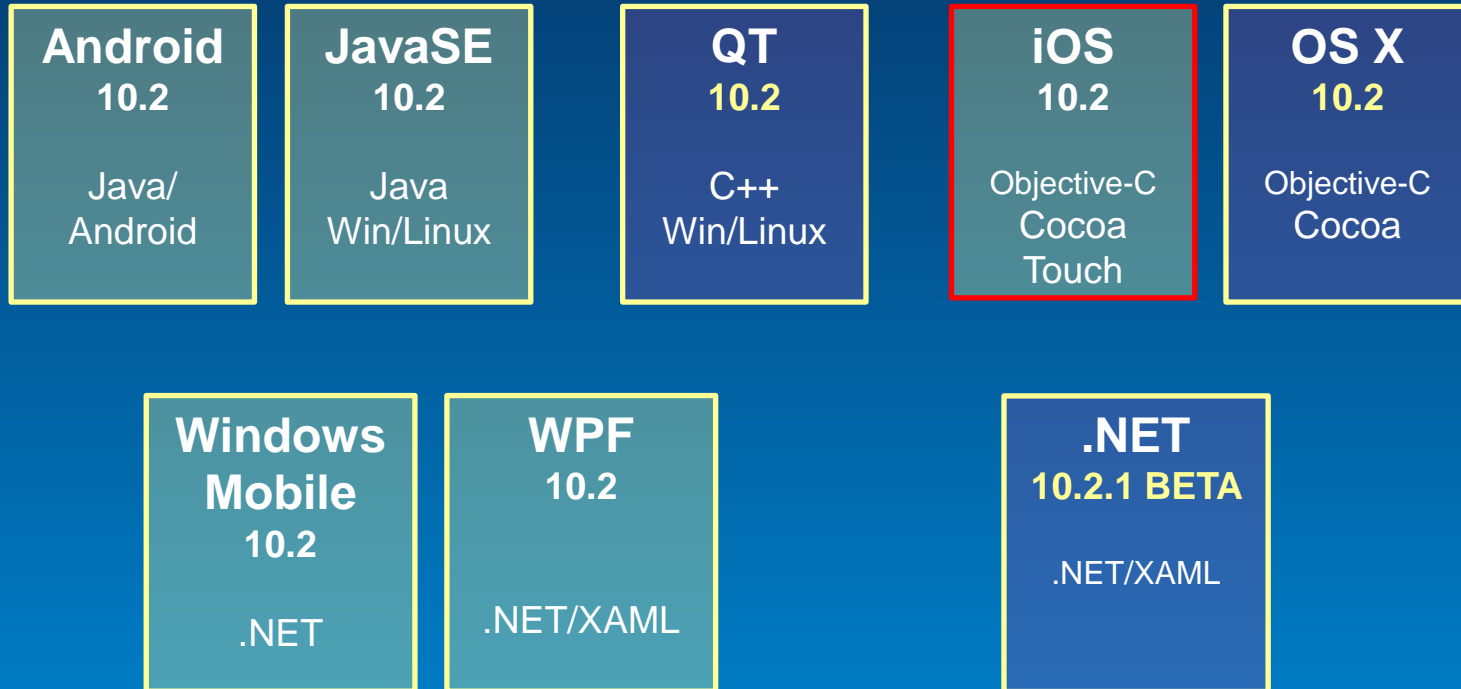
- Perform analysis



- So much more

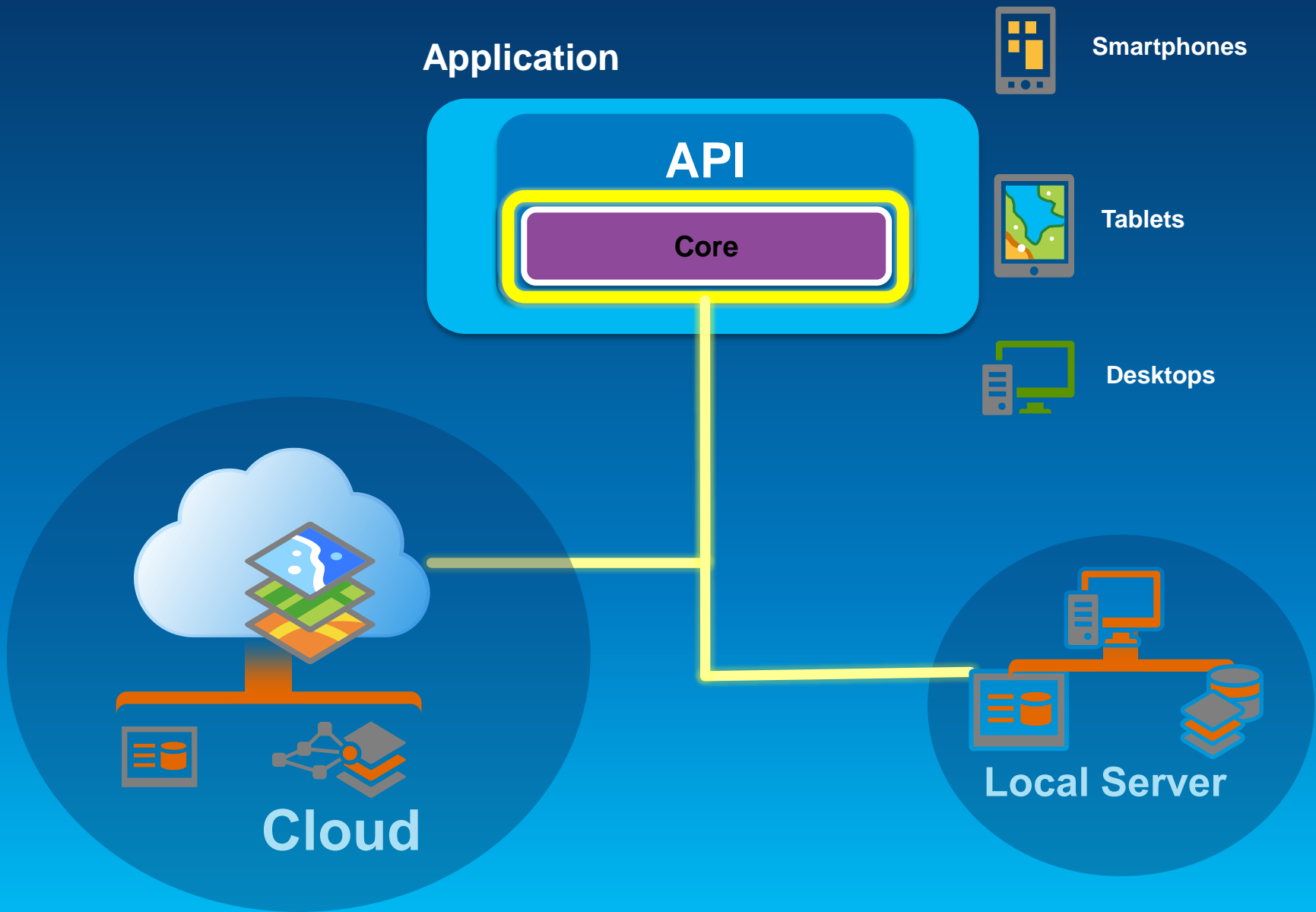


SDK Platforms



Core Runtime

Runtime API Architecture



ArcGIS Runtime SDK for iOS



- **Build native applications using Objective-C**
 - iPhone 4 & 4S, 5, iPod Touch, iPad
 - iOS 6.0 and up



Before you begin...

- **Intel-based Mac**

- **OSX 10.7, 10.8 and 10.9**
(Lion & Mountain Lion
and Mavericks)



- **Xcode (IDE) from the App Store**

- **Simulator**
- **iOS SDK**

- **ArcGIS Runtime for iOS v10.2**

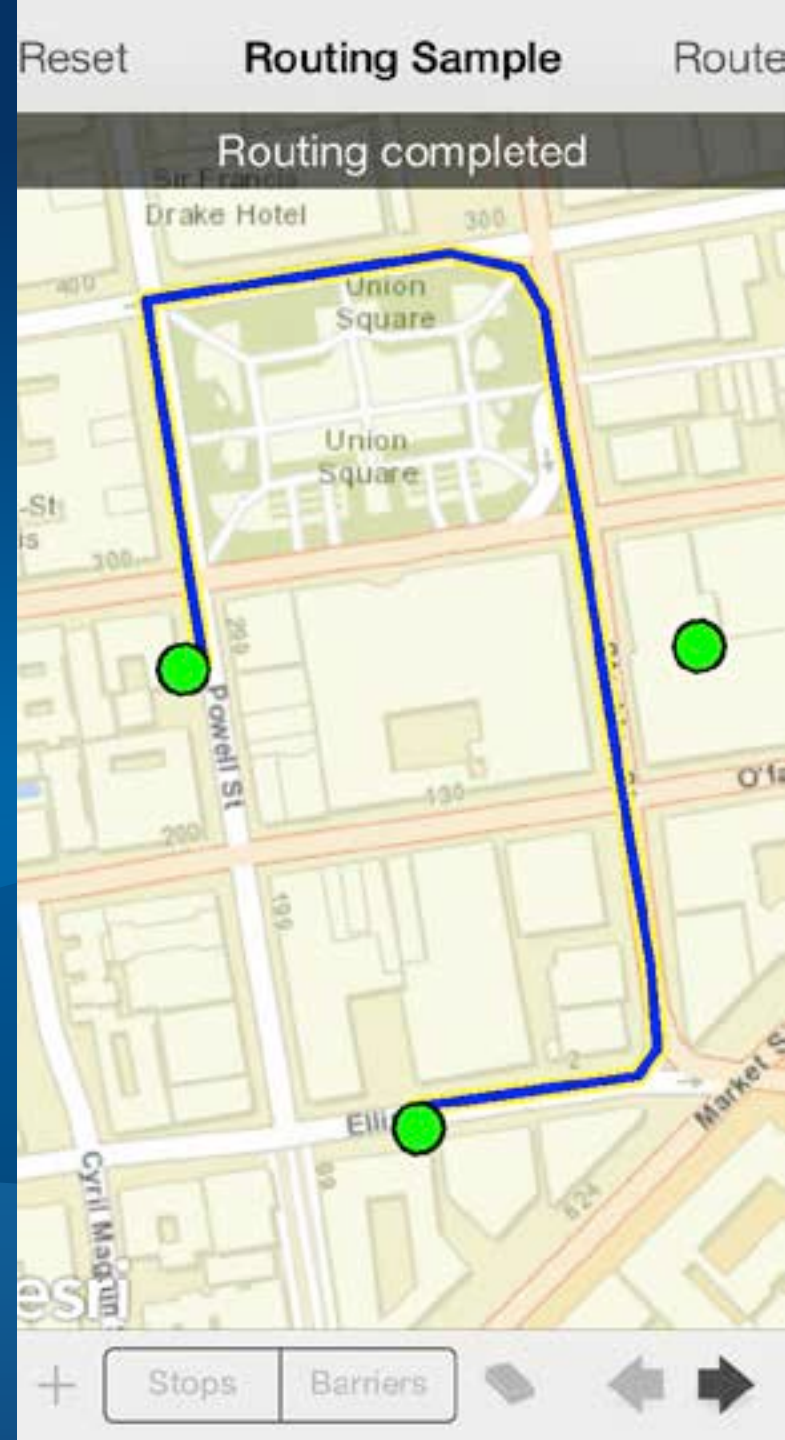


To test and deploy on actual hardware or older iOS...

- **Join Apple's iOS Developer Program**

- **Standard : AppStore distribution**
- **Enterprise : In-House distribution**

The ArcGIS Runtime SDK for iOS



What you can do with the SDK

- Display maps
- Perform analysis
- Visualize results
- Collect data



Displaying a Map

- **UI Component : AGSMapView**
 - **Responds to gestures**
 - Pinch to zoom & rotate
 - Drag to pan
 - Tap & Hold to magnify
 - **Displays GPS location**
 - Auto pan



Adding data to your map

- **Mashup layers**
 - ArcGIS Server Tiled layer
 - ArcGIS Server Dynamic layer
 - ArcGIS Server Image
 - Bing
 - Open Street Map
 - Graphics
 - Sketch



- **Display WebMaps**
 - ArcGIS.com
 - ArcGIS Portal



WebMap and the Portal API

- **WebMap**
 - **Saved Mashup**
 - **Configured symbols**
 - **Defined Popups**
 - **Saved in ArcGIS.com**

Performing Analysis

- Using Tasks

- Query, Find, Identify Task
 - Search for features In the map



- Geoprocessing Task
 - Spatial analysis using GP tools and models



- Locator
 - Geocode and reverse geocode addresses
 - ArcGIS World Geocoder (POI, Global Find, etc.)



Performing Analysis

- **Contd.**
 - **Geometry Service**
 - Perform geometry operations on the server
 - **Routing Task**
 - Point-to-point and multipoint driving directions
 - Barriers, Time Windows, Best Sequence
 - **Closest Facility Task**
 - Find nearest facility
 - **Service Area Task**
 - Compute drive times and service areas



Performing Analysis (native)

- Contd.
- **Geometry Engine**
 - native, high performance engine for performing geometric operations on the device



Visualizing Results

- **Graphics**
 - Geometry
 - Attributes
 - Symbol
- **Symbols**
 - Picture, Marker, Line, Fill
 - Composite
 - Text



Visualizing Results

- Contd.

- **Renderers**

- Simple
- Unique Value
- Class Breaks
- Temporal



Collecting Data

- Using Feature layers & Popups
 - Feature Layers edit data through Feature Services
- Popups provide UI to
 - Display and edit attributes
 - Manage attachments
 - View charts, media
- Popups configured through WebMaps
 - Attributes to display & edit
 - User friendly aliases and hints
 - Formatting for numbers, dates



Collecting Data

Using Popups

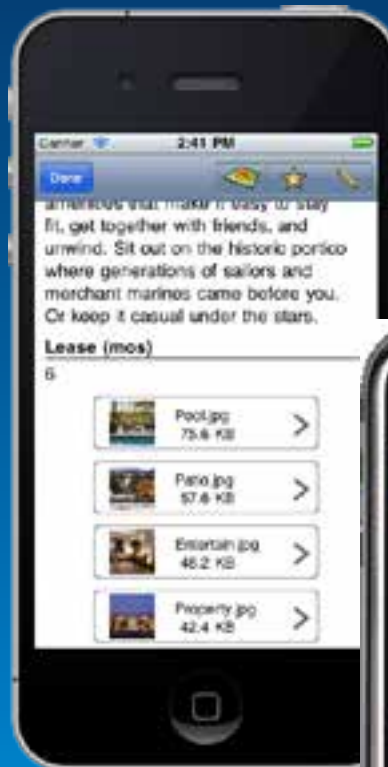
- Edit feature
 - Attributes
 - Geometry
 - Attachments

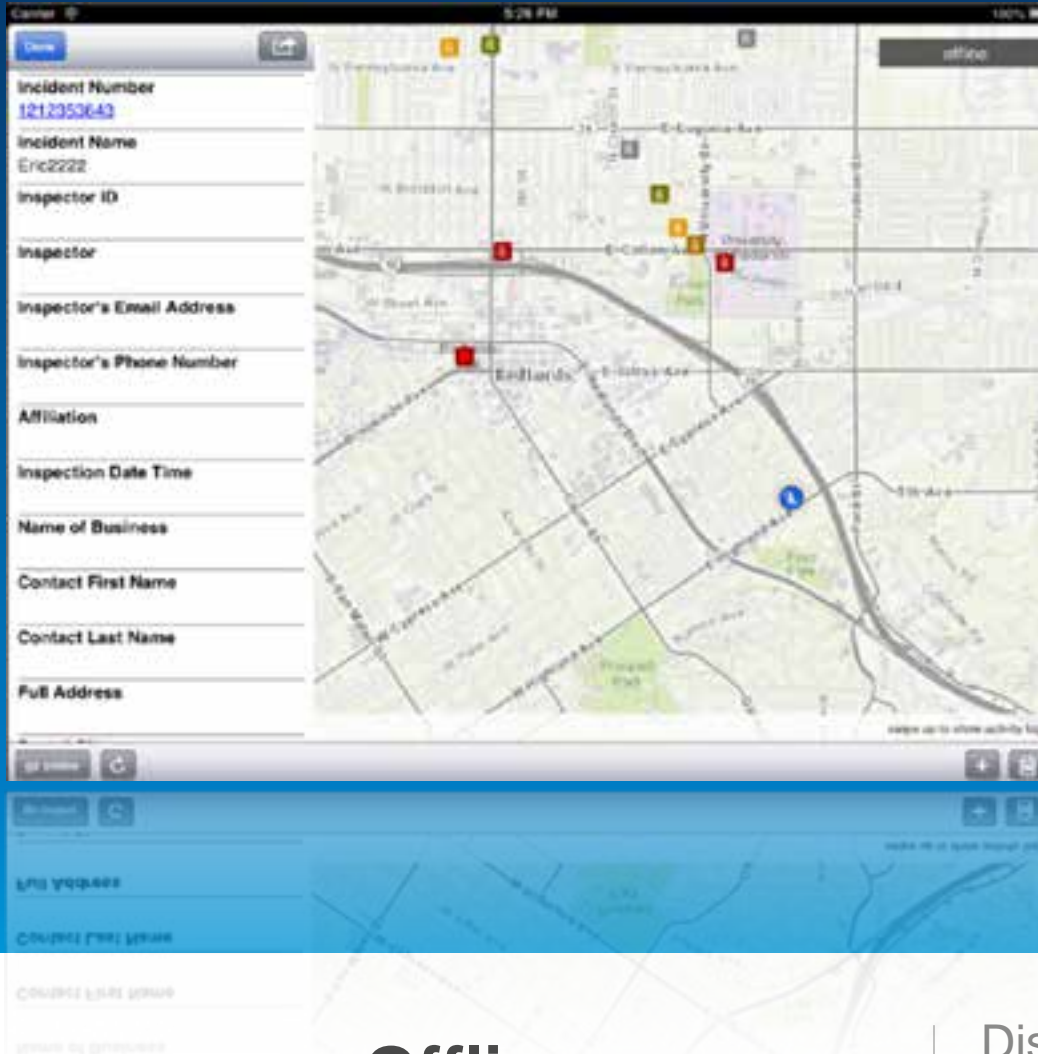


Managing Attachments

Using Popups

- View & Download
- Add
- Delete





Offline map use

Disconnected Editing and more...

Offline map use

A photograph of a vast, flat landscape under a hazy sky. In the foreground, a dark, patterned armchair sits on a patch of green grass. The background consists of a wide, open field stretching to a distant horizon line.

View maps
Features & Basemaps
Query maps
Edit maps
Route
Geocode

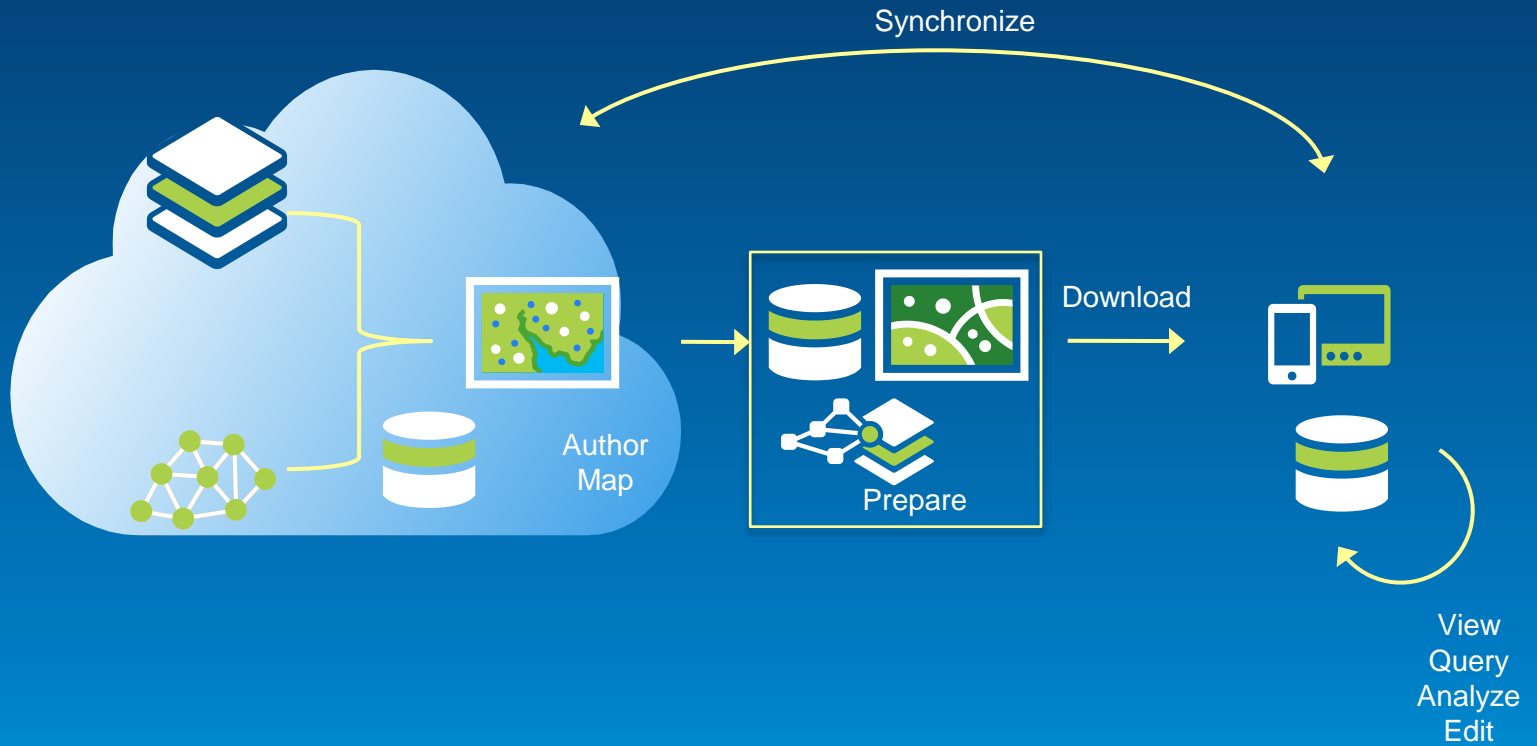
Pre-planned
Occasionally connected

Offline ArcGIS

- **Disconnected use of the ArcGIS platform**
 - Viewing/interacting with maps
 - Querying data
 - Editing features
 - Synchronization
 - **Spatial intelligence**
 - Find places and locations
 - Get directions
 - Pre-planned or on demand workflows
 - Occasionally connected scenarios
- **All Runtime SDKs**

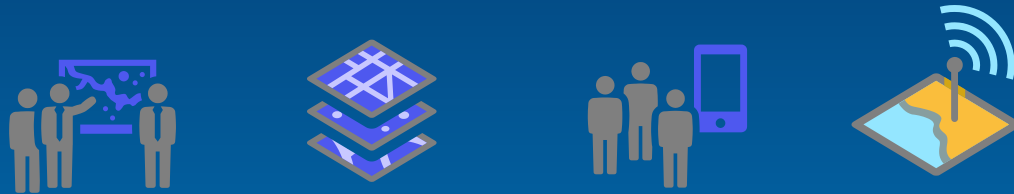


From ArcGIS Online

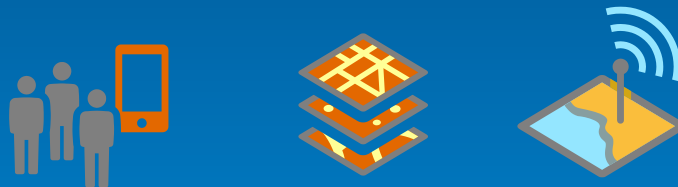


Workflows

- Pre-planned



- On-demand



- Occasionally connected



Demo

Download a tile cache



Demo

Geodatabase Sync



downloaded



What are we working on right now?

- **Offline Mapping**
- **Performance**
- **Geotriggers**
- **3D**
- **Data Support**
 - Kml, shp, raster
- **Vector maps**

- **The road ahead session is Wednesday at 14:00**

Get more information on ArcGIS

<http://developers.arcgis.com>

<http://arcgis.com>

<http://www.esri.com>

@esri

@arcgis_runtime



Understanding our world.