



ESRI Developer Network

Brian Goldin
Rob Elkins

Agenda



- Overview
- Key Features
- Program Policies
- EDN Website
- Future plans
- Summit Highlights

Developer Products Group



ESRI is committed to:

- Reduce complexity & cost for developer
- Provide developer opportunities
- Foster and support a developer community
- Overall goal: Help Developers be successful

ESRI Developer Network (EDN)



- Developer Products Program
- Providing the tools and resources to build solutions across the ArcGIS platform
- Sold as an annual subscription

EDN Is for Developers

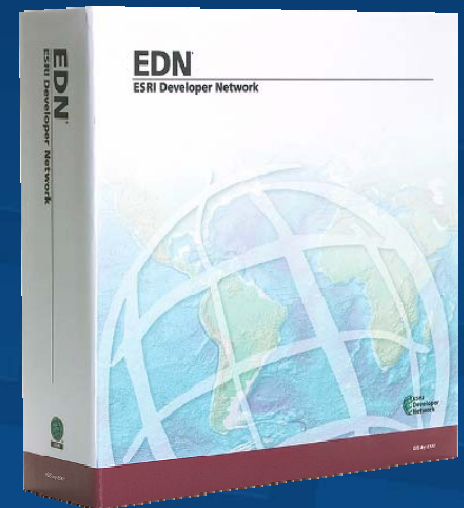


Engineered to deliver a complete developer solution

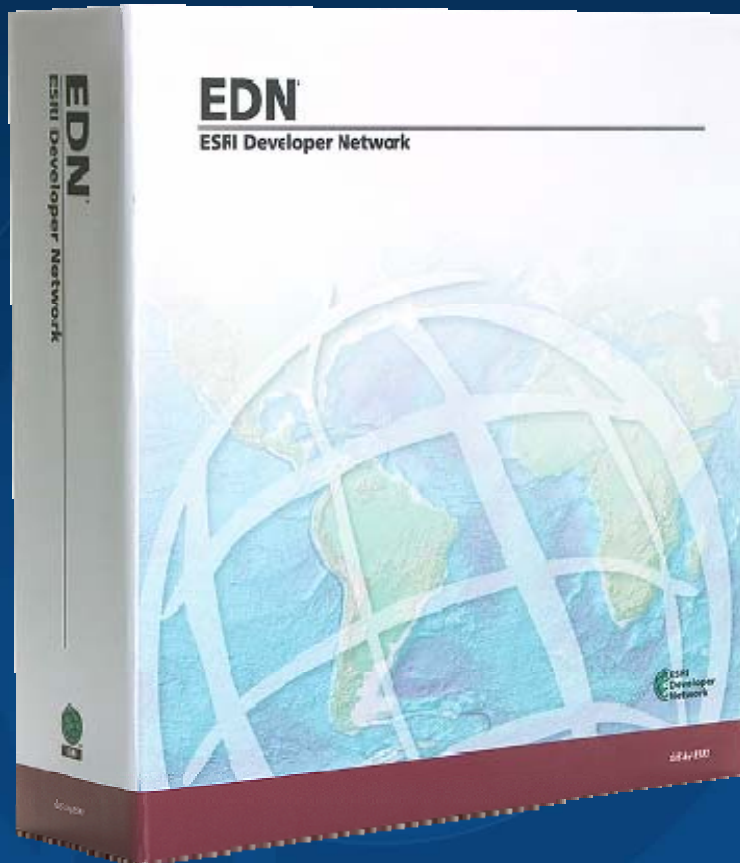
EDN Software Library



- The software media for the following products delivered in a special binder to all EDN subscribers
 - ArcGIS Server
 - ArcIMS
 - ArcSDE
 - ArcWeb Services
 - ArcGIS Engine Developer Kit

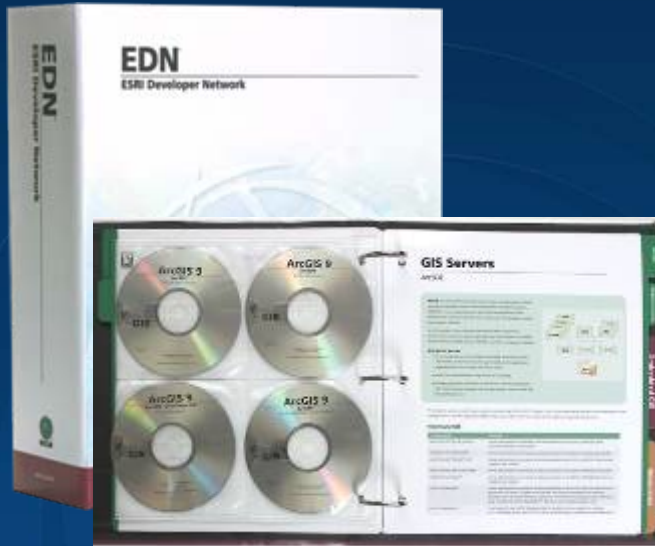


EDN Deliverables



- EDN binder for all product media
- Digital documentation and developer resources
- Updates shipped upon new version releases

ESRI Developer Network



Software Library

Website

- Optional**
- Advanced Support
 - Training

EDN Subscription



- A defined period (12 months) in which the software included as part of the EDN Software Library can be used by a single authorized developer for development and testing purposes only

Pricing



- US Annual Fee: \$1500 per developer
 - (individual)
- Annual subscription fee
 - (not maintenance)

Advanced Support & Training Options



- Developer support can be purchased
 - 10 calls (any EDN products): \$2000 (US pricing)
- Training credits
 - 5 days of Instructor-led training: \$2000 (US pricing)

EDN Compliments Existing Software

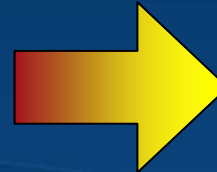
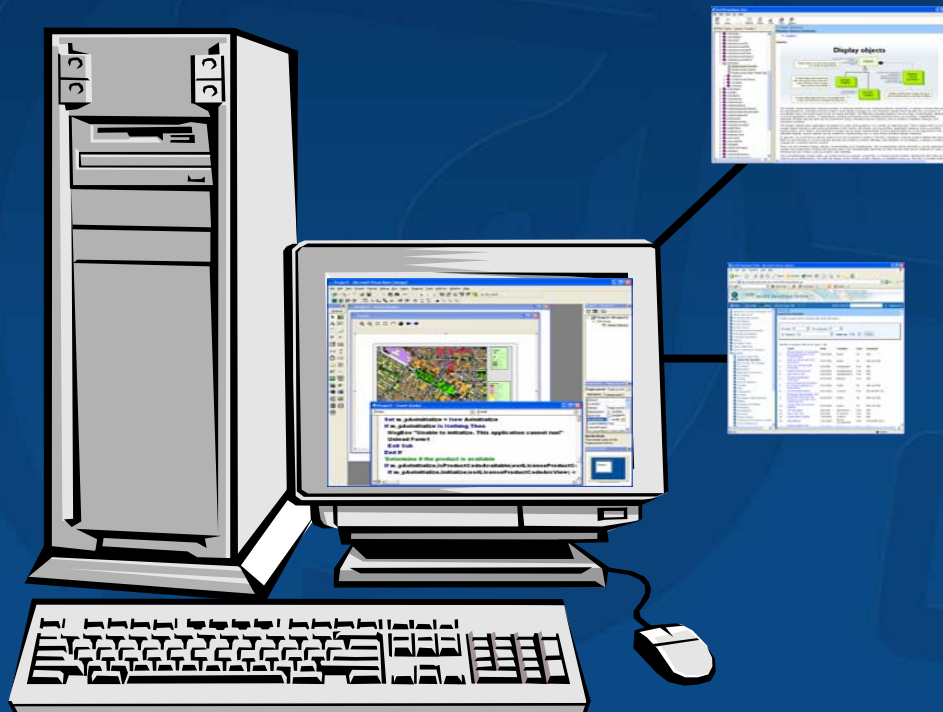


- EDN is not a replacement for our other products
- Individual products still available
- EDN does not replace ArcGIS Desktop software used by extension developers

Work Flow



1. ArcGIS Desktop
2. Develop with EDN



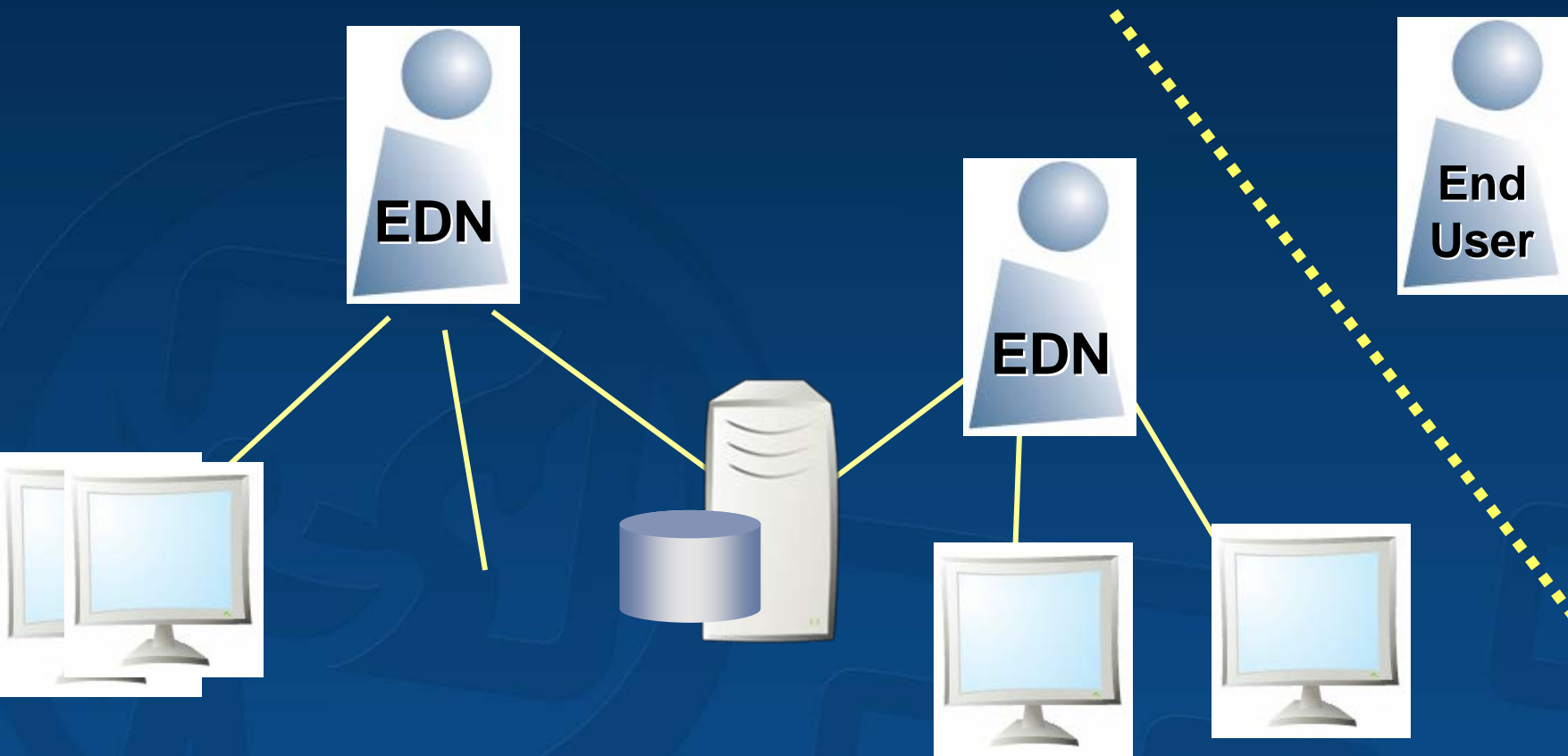
3. Deploy solution -
*Requires Desktop or
Server license*

Licensing



- Subscription
- Licensed per developer
- Authorization files issued annually
- Does not include any rights for deployments or production use
- Signed License Agreement required

Installation



Only those who have a current EDN subscription
can access the EDN software

Usage



- EDN licenses can be used for:
 - Commercial Off-The-Shelf Development (COTS)
 - One-off fee-based development
 - Internal development and testing
 - Demonstration & Marketing of custom solution

Prohibited Usages



- Production or Commercial use:
 - GIS analysis
 - Data conversion
 - Map production
 - Deployment

What is not included with EDN



- ArcGIS Desktop and extensions are sold separately
- EDN does not include the right to any deployments, runtimes or server technology for production or commercial uses



EDN Website and Community

Brian Goldin



Website Goals

- Single location for all ESRI Developer Resources
- Building blocks for developer community
- New types of resources
- Open to all

Developer Resources for the ESRI Platform



- ArcGIS Desktop
- ArcGIS Engine
- ArcGIS Server
- ArcIMS
- ArcSDE
- ArcWeb Services

EDN Developer Resources



- Resources span a number of categories
 - Documentation Library
 - Discussion Forums
 - Downloads (tools, utilities, updated help to be locally installed)
 - Sample code (ArcScripts and ESRI Samples)
 - Video content
 - Resources from special Events

Community Contribution



- EDN website supports collaborative feedback across content areas

ArcGIS Desktop - ArcObjects General forum

[select neighbouring feature](#)

[Re: select neighbouring feature](#) ☆

[Re: select neighbouring feature](#)

[Re: select neighbouring feature](#)

• [Top](#) [Print](#) [Reply](#)

Subject select neighbouring feature

Author binita karmacharya

Date Jan 07, 2006

Message hi
can anyone tell me how to select the neighbour
thank u for the help

• [Top](#) [Print](#) [Reply](#) ☆

Subject Re: select neighbouring feature


Author Jeffrey Suneson

Date Jan 08, 2006

Message Probably the easiest way would be to use the se
dropdown. You could also select using a buffer.


EDN Media Center

Cross Platform C++ Development



Description
Join Dave Riesz as he gives a demo and discusses some of the underlying concepts behind cross platform C++ development with ArcGIS Engine.

Clip Length: 17:40

 [Play video clip](#)

If you experience a problem, get the latest software. Plug-in software to view the content can be obtained from the link below.
[Free Windows Player](#)

[User comments](#) [Add your comment](#)

Nice little demo posted by: bgullatt on Nov 16, 2005 12:57

Nice little demo of the C API. When will the 9.2 or a Beta be available to try the QT widgets?

Where are we?



- 1 year anniversary
- The website has been successful as a single developer portal

Road Ahead for Developer Resources



- ArcGIS Desktop
 - Customizing ArcGIS with VBA
 - Extending ArcGIS with .NET (C# and VB.NET)
 - Extending ArcGIS with COM (VB6 and C++)
- ArcGIS Engine
 - Building applications with .NET
 - Building applications with COM
 - Building cross platforms apps with C++
 - Building applications with JAVA
- ArcGIS Server
 - Building .NET Server applications
 - Building JAVA Server applications



The Road Ahead for Resources and Community

- Participation in the community
- Product Centers for Developers
- Infrastructure updates
 - Blogs
 - Discussion Forums
 - Community Workspaces
 - Wiki
 - RSS all over the place

Resources



- www.esri.com/edn
- edn.esri.com
- service.esri.com/edn

- Brian Goldin: bgoldin@esri.com
- Rob Elkins: relkins@esri.com



Questions

Thanks!

Session Evaluations Reminder



Session Attendees:
Please turn in your session evaluations.

... Thank you