

A globe is the central focus, with several semi-transparent map layers and photos of people interacting with GIS technology. The layers include a 3D terrain map, a 2D map with a red and yellow heat map overlay, a map with blue and yellow markers, and a 3D bar chart. Photos show people in various settings: one person looking at a screen, a group of people in a meeting, and another person at a computer.

Developing ArcPad Custom forms and Queries using AXF

JIAN LANGE (ESRI)
ELVIN SLAVIK (MAPTEL)

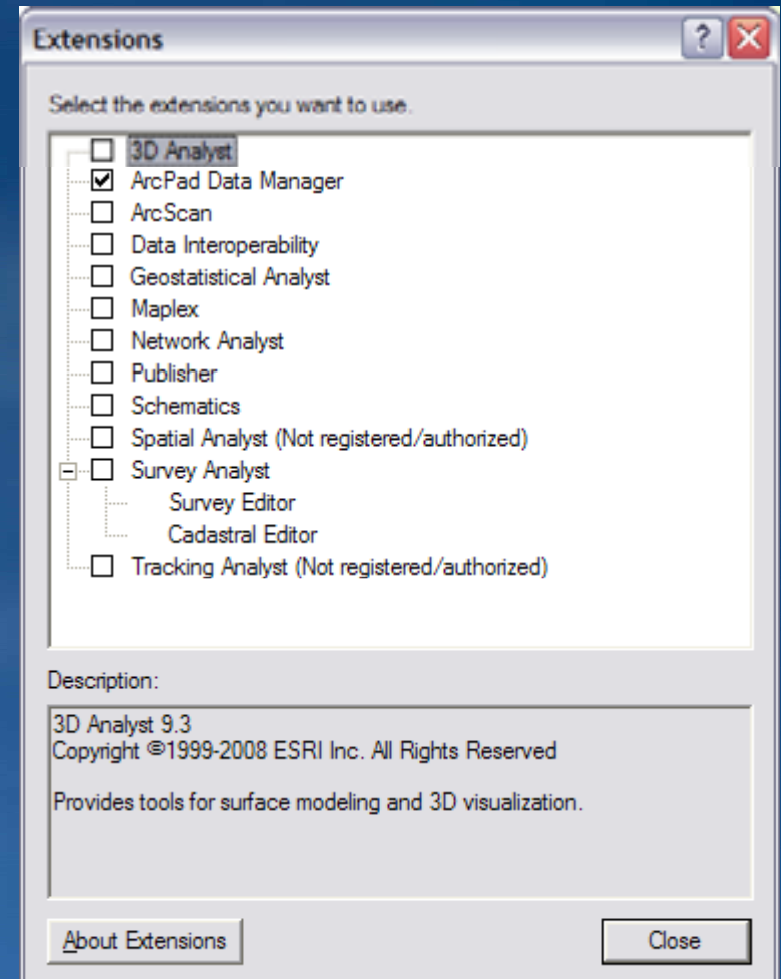


AXF – What is it?

- **A “Lightweight Geodatabase”**
- **Built on top of Microsoft SQL Server Compact Edition**
 - A fully fledged mobile SQL database supported on both Windows and Windows Mobile platforms (same file format)
 - .AXF files are SQL databases
 - OGC SFS schema
- **Simplistic analogy is ‘shapefiles’ in a database**
- **Created using :**
 - ArcPad Data Manager (ArcMap)
 - ArcPad Geoprocessing Tools (ArcToolbox)

Getting started using the ArcPad Data Manager

- Make sure the ArcPad Data Manager Extension is enabled
- Enable the ArcPad Data Manager toolbar



Demonstration 1

- **Using the ArcPad Data Manager to prepare an AXF**

Demonstration 2

- Customising and building forms for AXF layers

Demonstration 3

- **Building and using query forms**

Demonstration 4

- **Going further with forms using SQL and related tables**