



Introduction ArcGIS for Situational Awareness Bundle

Al Pascual
@alpascual
apascual@esri.com



Schedule

Please!
Turn **OFF** cell phones
and paging devices



- Today we will cover
 - What's the SAB Bundle?
 - Benefits
 - Key Features
 - Flex Map Viewer

- We will answer questions during session AND at the end?

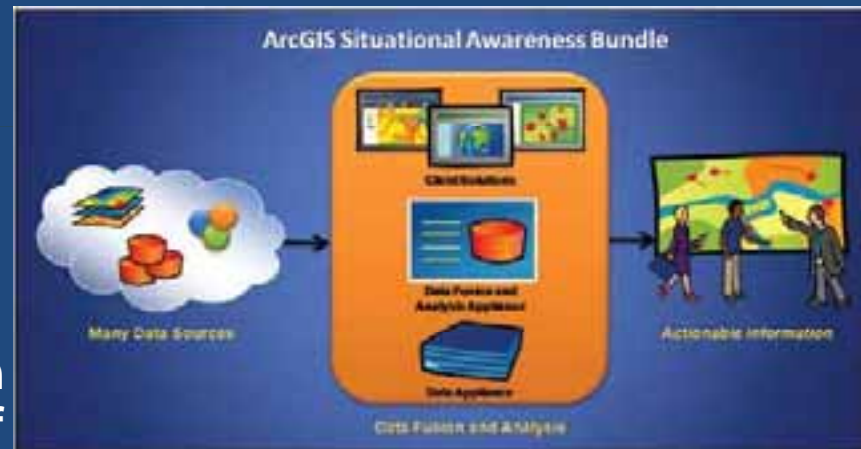
Please complete the session survey!

ArcGIS Situational Awareness Bundle

A Complete Solution

Geospatial Intelligence & Decision-Making Solution

- Provides organization with a capability to gain a timely and accurate understanding of their operations and the events that impact them.
- Delivered as ready-to-operate hardware, a powerful data fusion and analysis engine, and a set of fully customizable clients for viewing data.
- Includes terabytes of pre-rendered nationwide and world data.



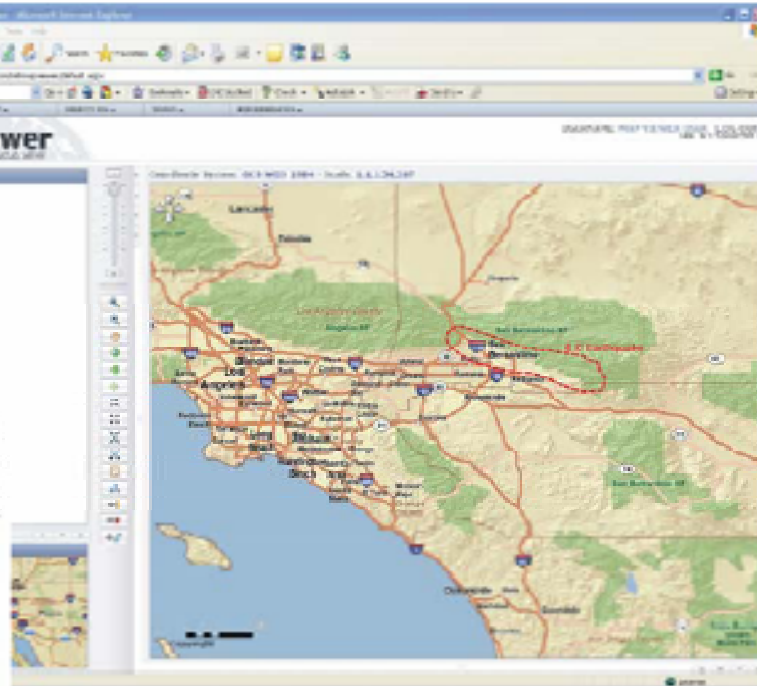
With ArcGIS for Situational Awareness, you can

- **Respond quickly to events with geospatial**
- **Fuse complex, disparate datasets and operational data**
- **Collaborate and communicate across multiple organizations**
- **Assure reliable and robust interoperability with geospatial**
- **Customize viewers and visualization tools to fit your specific needs and requirements.**
- **Utilize commercial or publicly available datasets.**

ArcGIS Situational Awareness Bundle

Benefits

Access in the Field



Web-Based Portal

The ArcGIS Situational Awareness Bundle is optimized to reduce implementation time and easily integrates with your existing IT or GIS enterprise environment. Because the ArcGIS Situational Awareness Bundle is hosted locally, your organizations critical business needs can be achieved through the unlimited and uninterrupted access to the necessary geographic data, services, and solutions

Benefits

- Respond both proactively and reactively to situations for more efficient and effective operations
- Distill complex, disparate information into actionable intelligence in an operational environment
- Measure the effectiveness of decisions and operations
- Support collaboration and communication across multiple organizations
- Visualize operational activities through a single window

ArcGIS For Situational Awareness Bundle

Key Features

Key Features

- Seamless interoperability with your existing GIS infrastructure
- Integrate with other geodata systems and services
- Incorporate live, dynamic data for a near real-time picture of operations
- Support your workflows through multiple clients including browser-based, rich desktop, and mobile clients
- Perform analysis out of the box



*Two dimensional or
three dimensional
views on the desktop*



ArcGIS Situational Awareness Bundle

Bundle

Standard Bundle

- **Data Appliance**
 - Prime USA Imagery
 - USA Street Map
 - TOPO Maps
 - World Collection
- **Data Fusion & Analysis Appliance**
- **Client Solutions**
 - Data Management
 - 3D Viewer
 - Browser-based COP
- **Implementation Services Package**
- **Training Package**



What is the ArcGIS for Situational Awareness Bundle?

- Complete out-of-the-box Solution for Situational Awareness
 - **Flex Viewer**
 - Overview Map, Bookmarks, Print, Widgets, Locate, Draw, Driving Time, GeoRSS, Identify
 - **ArcGIS Explorer**
 - Build 500 release integrated
 - **ArcGIS Server Enterprise Advanced**
 - Mobile and Geoprocessing capabilities in the box*
 - **Access to 3rd Party Content**
 - WebEOC
 - USGS GeoRSS feeds
 - Global Disaster Alert
 - **ArcGIS Online Data Content**
 - **Ready-to-install Hardware**
 - Application Server and Data Storage Device, w/ Options more
 - Integrates with Web & Database Servers
 - Installation, Support and Training included



Applications



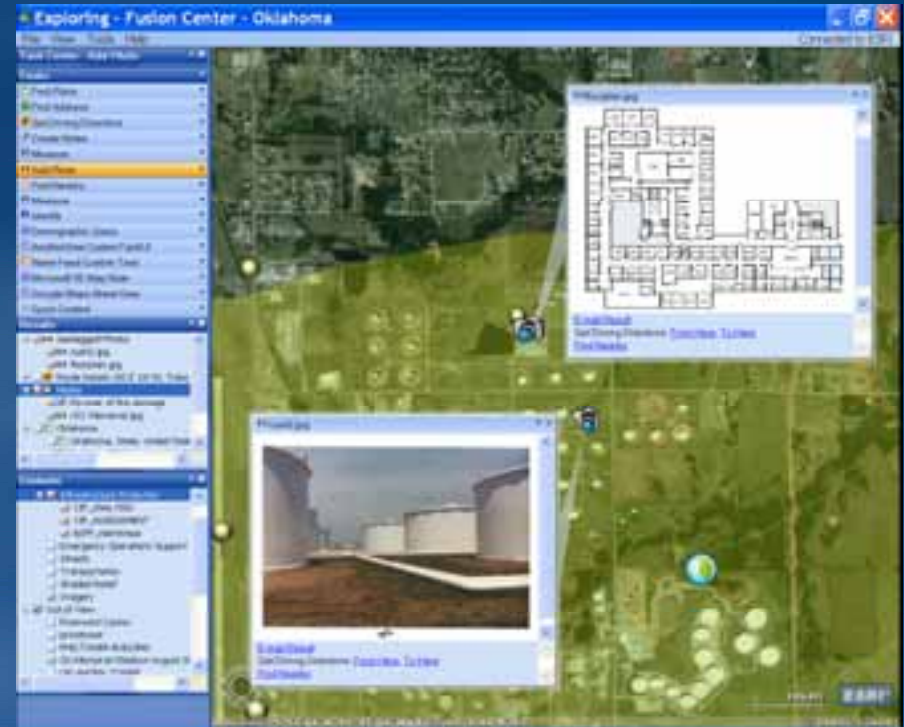
Data



Hardware

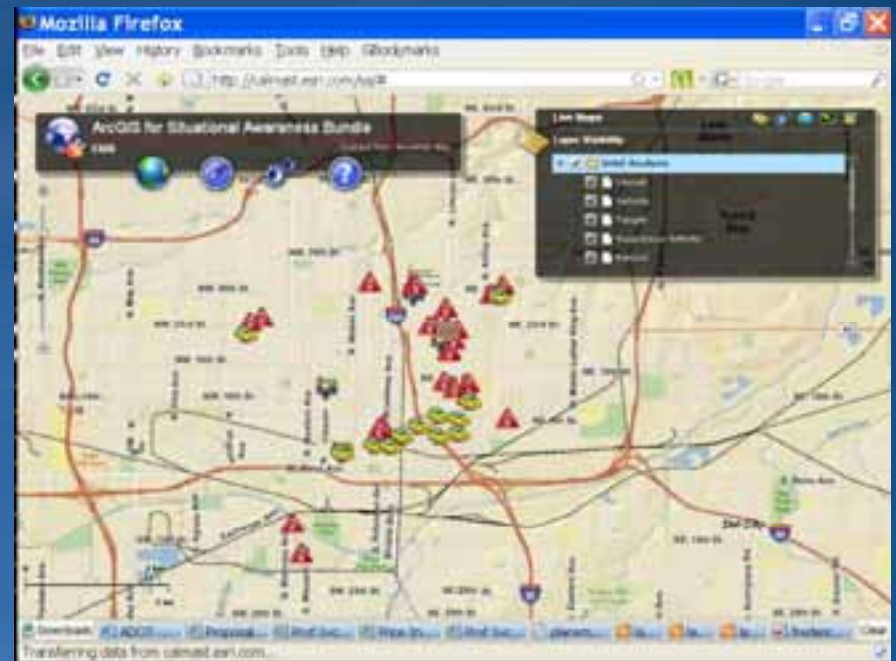
What Products are included in ArcGIS for Situational Awareness Bundle?

- **ESRI**
 - ArcGIS Desktop – Arc Info
 - ArcGIS Server - Advanced Enterprise
 - ArcGIS Explorer
 - ArcGIS Online Content
 - Prime USA Imagery
 - Street Map
 - iCubed & National Geographic topographic content
- **External**
 - IceWeb INLINE Data Appliance
 - IceWeb INLINE Application Server



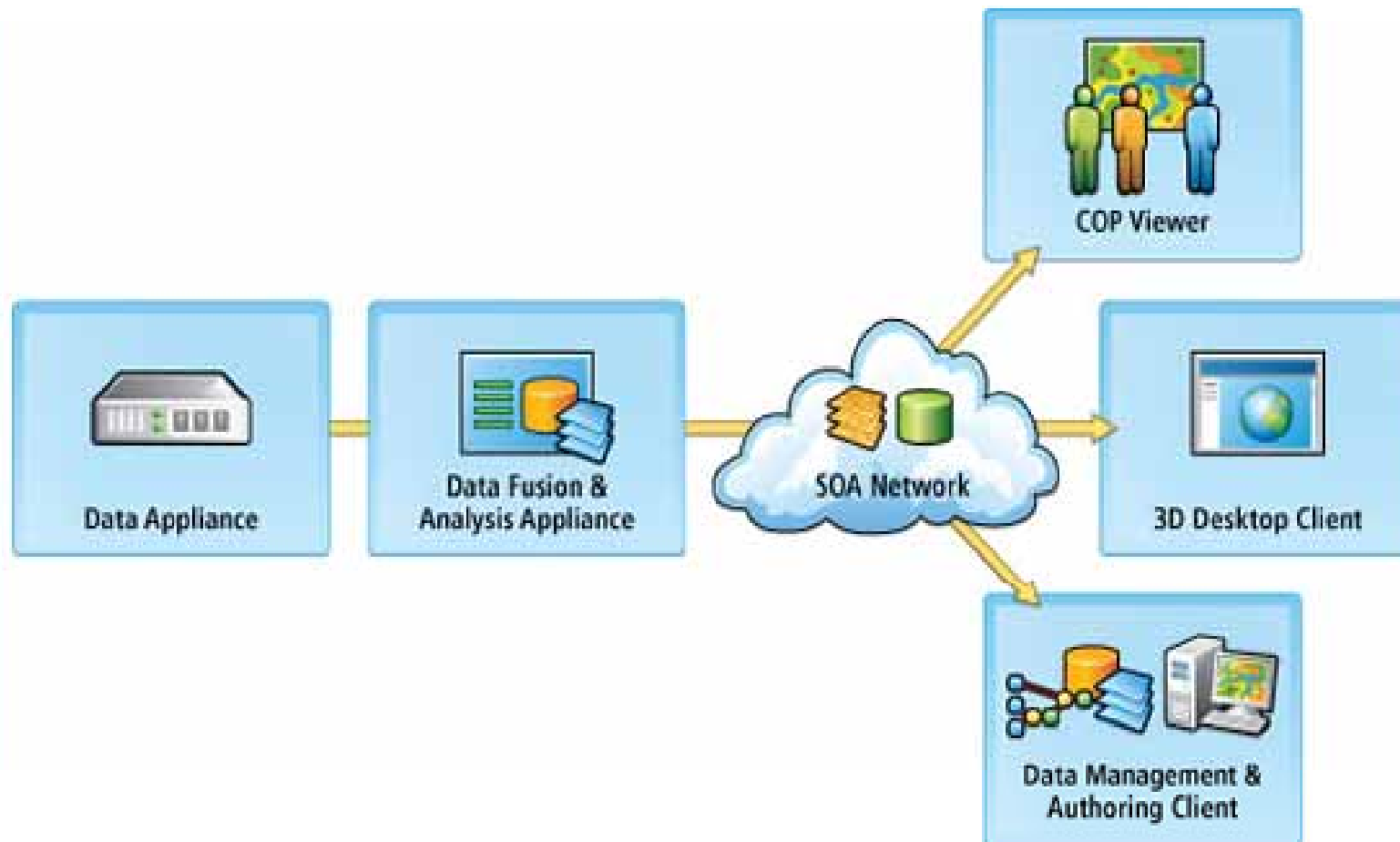
Are There Any Options?

- **Data Storage**
 - Additional Data Storage – up to 2TB
- **Hardware**
 - Passive Failover
 - Rack, UPS & KVM
 - SQL Server DBMS Server
- **Professional Services Add Ons:**
 - Mobile
 - Analysis
 - Integration Services
 - Others



ArcGIS SA Framework

The ArcGIS for Situational Awareness Framework



The Situational Awareness Flex Builder

Code Gallery

Sample Flex Viewer

This sample viewer was designed to showcase some of the core capabilities of the ArcGIS Platform through a simple, modern, Web2.0 style user interface. This sample may be used in compiled form with simple modifications to its configuration file, or its source code can be used by application developers to further explore and understand some of the best practices and programming patterns of the ArcGIS API for Flex.



Author	SampleViewerTeam
Date Submitted	11-14-2008
Date Last Updated	02-09-2009
Language	Flex
Product/Version	ArcGIS Server 9.3
Views	9781
Downloads	3940
License Type	ESRI Attribution and License Agreement

(17 ratings)



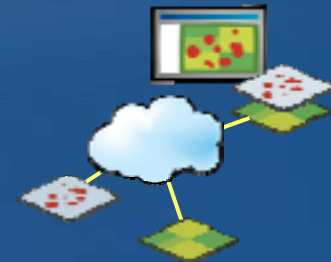
[Download Now](#)

[View It Live](#)

[Report Inappropriate Content](#): This Code Gallery is intended for the free exchange of code related to ESRI software products. Let us know if this entry is inappropriate (e.g., a download for a commercial product).

The new Widgets on the Viewer

- Download the template here
<http://resources.esri.com/arcgisserver/apis/flex/index.cfm?fa=cod eGalleryDetails&scriptID=15905>
- Extended the features of the viewer including:
 - Shapefile Viewer
 - Dynamic adding Map services.
 - ArcGIS Server 9.3
 - IMS
 - WMS
 - Dynamic adding GeoRSS Feeds
 - 3rd Party content providers.
 - Weather.



Introducing to GeoRSS



- **Simple RSS with geographic information**
 - Points
 - Lines
 - Polygons
- **Real time against KML and Shapefiles**
- **GeoRSS is like RSS sorted by time.**
- **GeoAtom?**
- **GeoRSS: georss.org**

Convert content to GeoRSS

- **Convert Feature Classes**
- **Text**
- **Sql Tables**
- **Web services**
- **Or create your own parser**



Situational Awareness Configuration Tool

- Configure the Bundle selecting the content you want to see.



The configuration file in XML

```
10// and use restrictions. See use restrictions in the file:
11// <install location>/FlexViewer/License.txt
12//
13////////////////////////////////////
14-->
15<configuration>
16  <userinterface>
17    <banner>visible</banner>
18    <title>ArcGIS for Situational Awareness</title>
19    <subtitle>Version 1.0</subtitle>
20    <logo>com/esri/solutions/flexviewer/assets/images/logo.png</logo>
21    <stylesheet>com/esri/solutions/flexviewer/themes/darkangel/style.swf</stylesheet>
22    <menus>
23      <menu id="menuMap" visible="true" icon="com/esri/solutions/flexviewer/assets/images/icons/i_globe.png">Map
24      <menu id="menuNav" visible="true" icon="com/esri/solutions/flexviewer/assets/images/icons/i_nav.png">Navigation
25      <menu id="menuWidgets" visible="true" icon="com/esri/solutions/flexviewer/assets/images/icons/i_widget.png">Widgets
26      <menu id="menuFeeds" visible="true" icon="com/esri/solutions/flexviewer/assets/images/icons/i_servicearea.png">Feeds
27      <menu id="menuHelp" visible="true" icon="com/esri/solutions/flexviewer/assets/images/icons/i_help.png">Help
28    </menus>
29  </userinterface>
30  <map initialExtent="-122.2 24.89 -70.59 46.92" fullExtent="-150 -50 150 50">
31    <basemaps menu="menuMap">
32      <mapservice label="Satellite" type="tiled" visible="false" alpha="1" icon="com/esri/solutions/flexviewer/assets/images/icons/i_satellite.png">
33      <mapservice label="Street" type="tiled" visible="true" alpha="1" icon="com/esri/solutions/flexviewer/assets/images/icons/i_street.png">
34      <mapservice label="Topographic" type="tiled" visible="false" alpha="1" icon="com/esri/solutions/flexviewer/assets/images/icons/i_topographic.png">
35    </basemaps>
36    <livemaps>
37
38    </livemaps>
39  </map>
40  <navtools>
41    <navtool label="Zoom In" icon="com/esri/solutions/flexviewer/assets/images/icons/i_zoomin.png" menu="menuNav">
42    <navtool label="Zoom Out" icon="com/esri/solutions/flexviewer/assets/images/icons/i_zoomout.png" menu="menuNav">
43    <navtool label="Full Extent" icon="com/esri/solutions/flexviewer/assets/images/icons/i_zoomfull.png" menu="menuNav">
44    <navtool label="Re-center Map" icon="com/esri/solutions/flexviewer/assets/images/icons/i_pan.png" menu="menuNav">
45  </navtools>
46  <widgets>
47    <widget label="Live Maps" icon="com/esri/solutions/flexviewer/assets/images/icons/i_folder.png" menu="menuMap">
48    <widget label="Overview Map" icon="com/esri/solutions/flexviewer/assets/images/icons/i_overview.png" menu="menuMap">
49    <widget label="Bookmarks" icon="com/esri/solutions/flexviewer/assets/images/icons/i_bookmark.png" menu="menuMap">
50    <widget label="Print" icon="com/esri/solutions/flexviewer/assets/images/icons/i_print.png" menu="menuMap" con
```

DEMO TIME

Situational Awareness Flex Map Viewer

Pricing

- **Editions—ArcGIS for Situational Awareness is offered in two editions based on the data available**
 - **National—Includes terabytes of pre-rendered nationwide and worldwide street and transportation data, place-names, administrative boundaries, aerial imagery, topographic maps, shaded relief maps, and elevation data.**
 - **State—Include the same data types as the National Edition but limited to the boundary of a single state.**

What Do You Get with ArcGIS for Situational Awareness?

- **Data Appliance**
- **Data Fusion & Analysis Appliance**
- **Client Solutions**
- **Package**
 - **Training Package**
 - **Annual Renewal and Support**

Optional Features

- **First Year Premium Upgrade for ArcGIS Data Appliance**
- **Premium Yearly Renewal for ArcGIS Data Appliance**
- **Database Management Appliance**
- **Additional Storage**
- **Hardware Failover**
- **Server Rack, UPS, & KVM**

Summary

- **Today we covered**
 - Introduction to the Situational Awareness Bundle
 - Technology used for the SA Viewer
 - Configuration of the Viewer
- **<http://ESRI.com/SAB>**

Still have questions?

Additional Resources

Questions, answers and information...

- **Tech Talk**

- *Outside this room right now!*

- **Meet the Team**

- *Time and location of your Meet the Team*

- **Other sessions**

- *List other related session here*

- **ESRI Resource Centers**

- PPTs, code and video



resources.esri.com

- **Social Networking**



[www.twitter.com/
ESRIDevSummit](http://www.twitter.com/ESRIDevSummit)

facebook

[tinyurl.com/
ESRIDevSummitFB](http://tinyurl.com/ESRIDevSummitFB)

THANKS

the end