



Esri International Developer Summit
Palm Springs, CA

New ArcGIS Professional .NET SDK

Charlie Macleod, Narelle Chedzey, Jeff Barette

.NET SDK Characteristics

- **Built on the ArcGIS Pro's Public Managed API**
- **New and Modern API for Developers**
- **Consistent API (across all modules).**
- **API in-line with Runtime API. Not identical but follows same principals**
- **ArcGIS Pro's API a superset of Runtime API (where appropriate)**
- **Demand driven growth (API to grow over time based on customer needs)**

SDK Characteristics

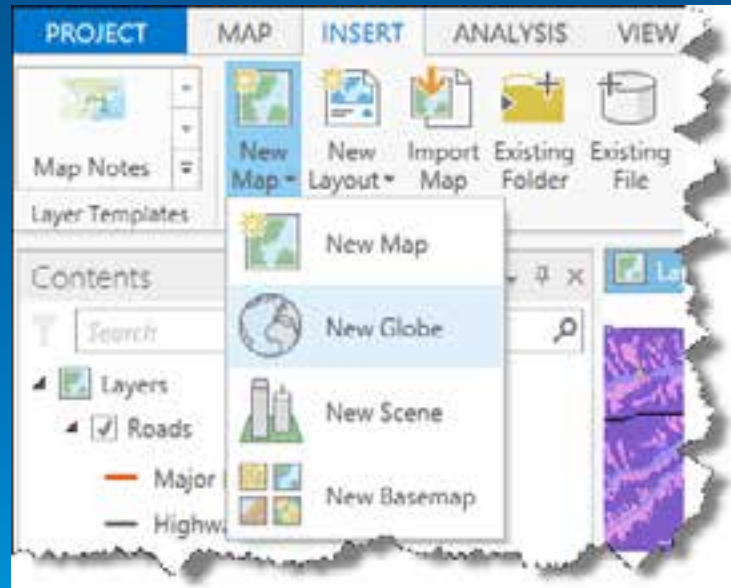
- Easy to use project templates and wizards (in the Visual Studio IDE)
- Modern. Focus on VS 2013.
- Customization through simple app configuration
- Automated and extended with python and a new .NET API and SDK
- Use of asynchronous methods to maintain a responsive UI is common in .NET API
- Customizations delivered via Add-Ins (no COM based extensibility.)
 - Easy to share, and manage

SDK and Arcpy.Mapping

- Python is an extensibility language for automating data management, analytics, and map production
- ArcGIS Pro supports the majority of Python scripts from previous releases and tools with embedded scripts
- ArcGIS Pro and arcpy.mapping module supports the new project model, maps, layouts, etc.
- Familiar Python command line has been added to ArcGIS Pro
- Staying current with Python. Updating Python version to 3.4

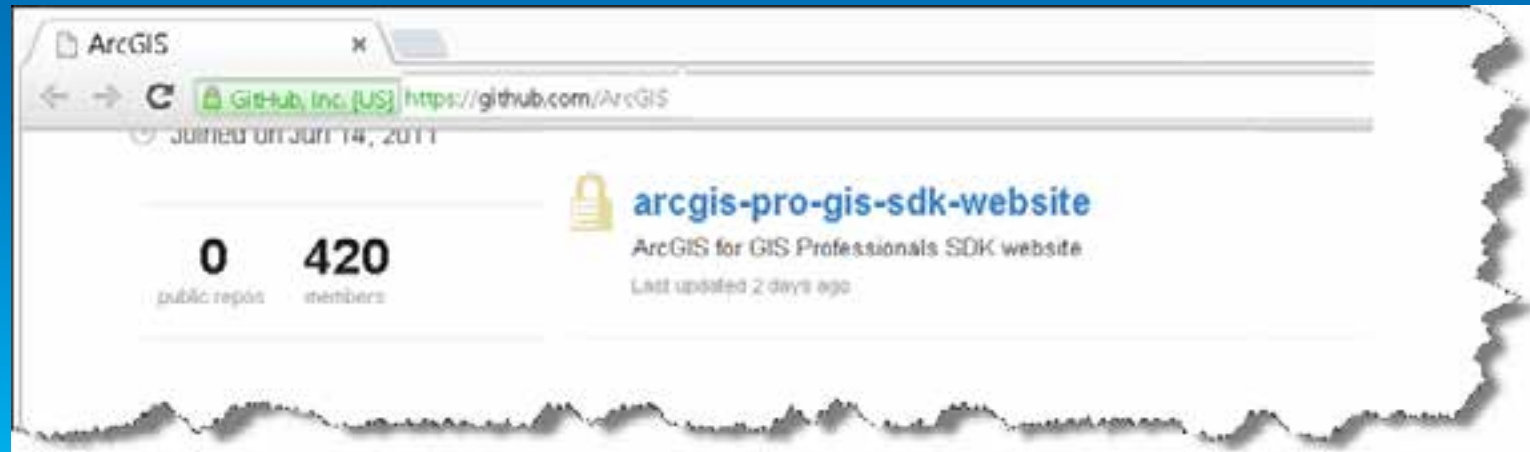
.NET SDK Extensibility Points

- Provided through Add-ins
- Add-ins will be provided for all Professional's UI elements (or “controls”)
 - Modules
 - Button
 - Tool
 - Galleries
 - Palettes
 - Menus
 - Ribbons
 - Panes (dockable)
 - ...



SDK Contents

- **Visual Studio extensions (project and item templates, utilities)**
- **Documentation**
 - Reference API documentation
 - Concept, Guide, Tutorial documentation
- **Samples. Samples to be deployed on Github**
 - Companion datasets, .aprx hosted at Arcgis Online
 - Intent is to review and accept pull requests for contributions to samples from our users



Demos and Walkthroughs

Demos

- **Button – Intro to DAML**
- **Jeff – python walkthrough**
- **Dockpane**
- **Custom Control**

Q & A



Understanding our world.