



Esri International Developer Summit
Palm Springs, CA

Understanding the ArcGIS for Server Web Adaptor (IIS)

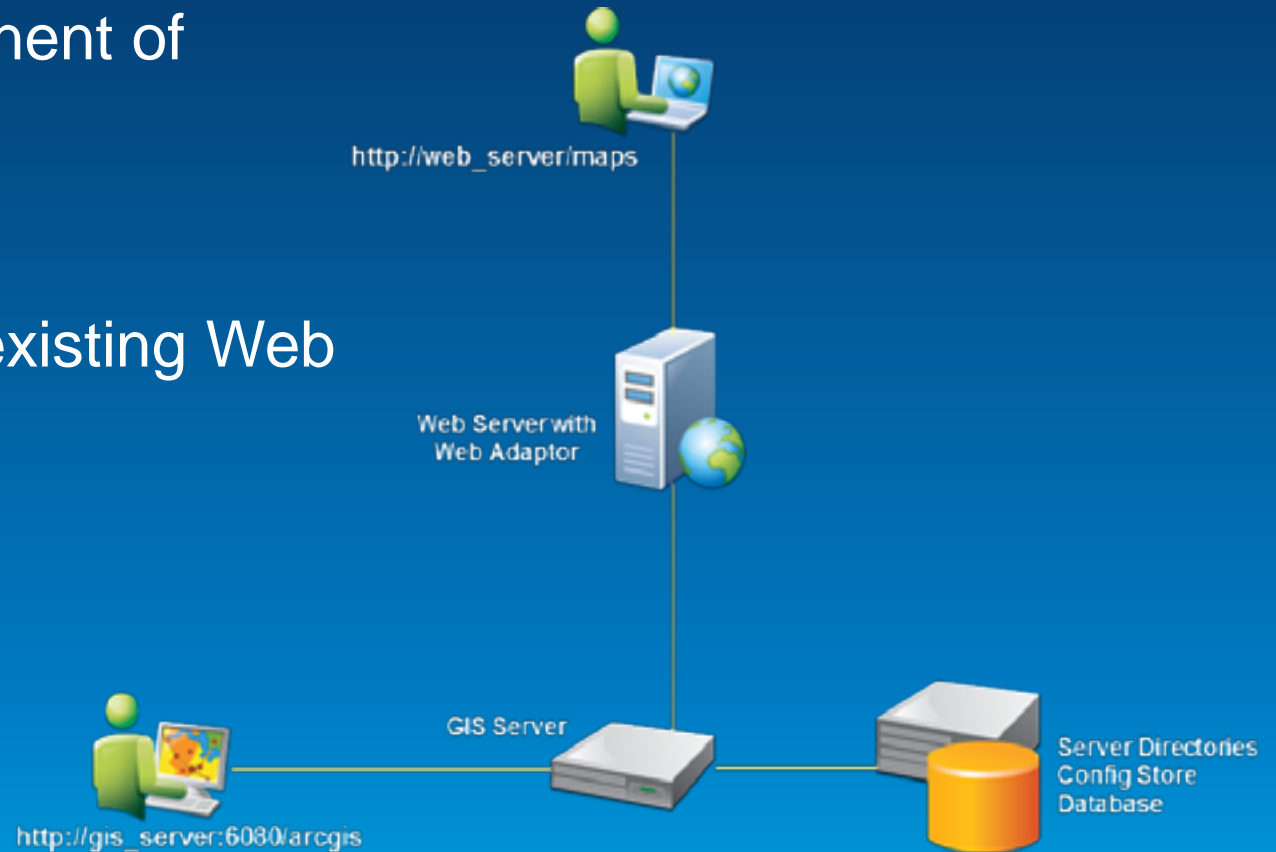
Subrat Bora

Agenda

- What is Web Adaptor
- When to use it
- Benefits of using the Web Adaptor
- New Functionalities

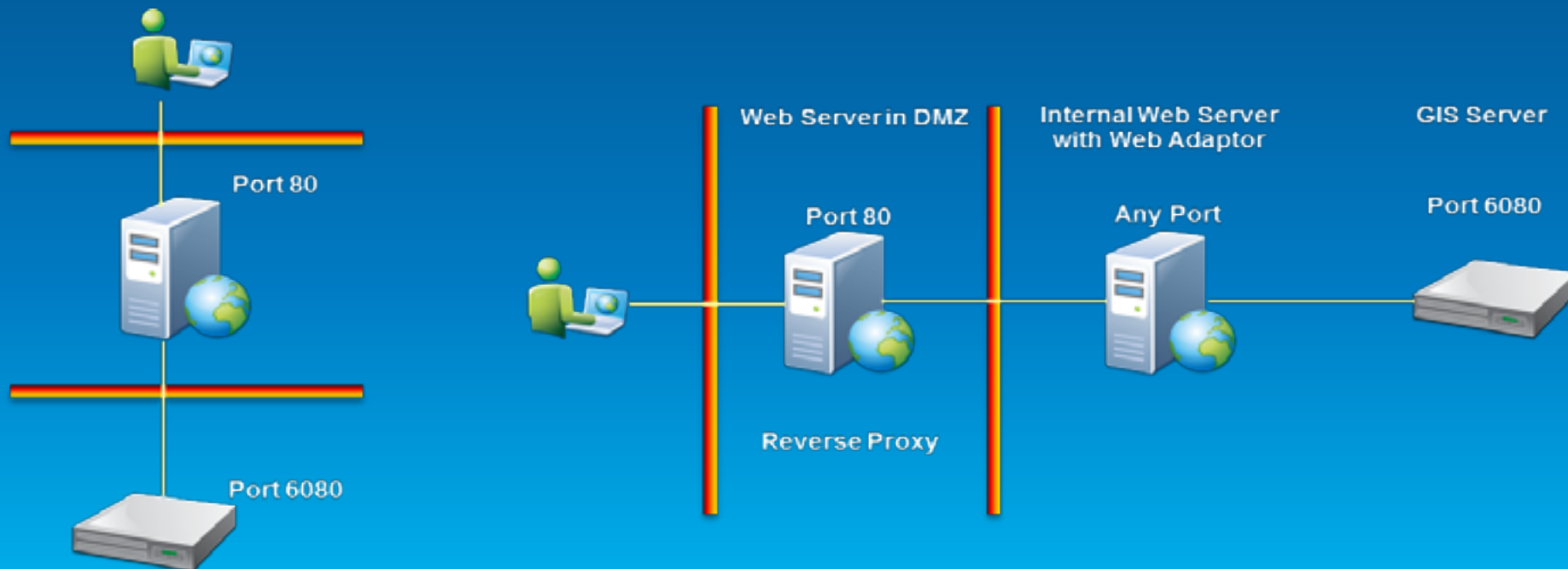
What is Web Adaptor

- Optional but Integral component of ArcGIS Server
 - Mandatory in Portal for ArcGIS
- Integrates GIS Server with existing Web Server



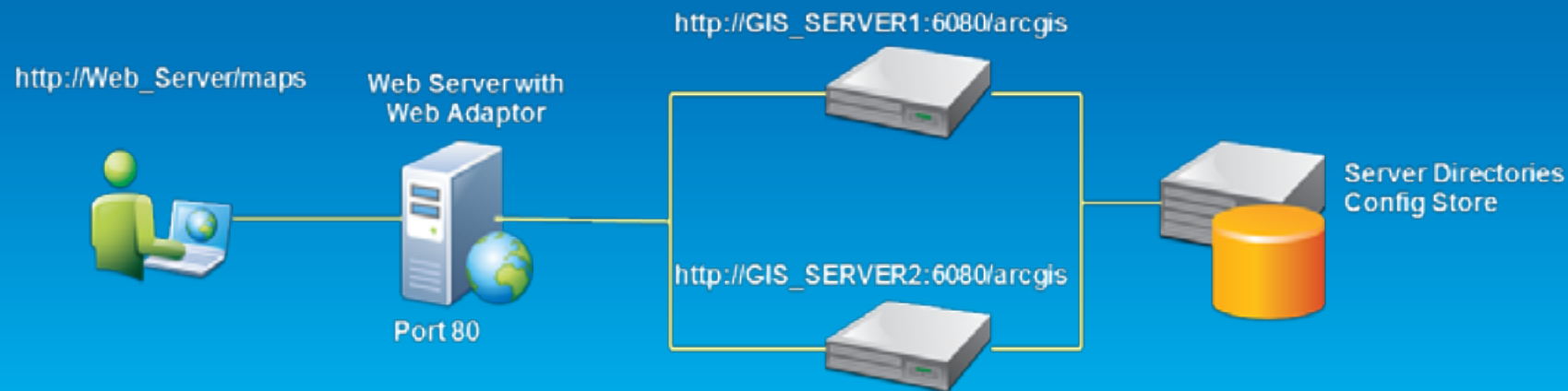
When to use it

- You want to integrate GIS Server with your Enterprise Web Server
- You want to serve your maps through port 80 or 443
- Integrated Windows Authentication or PKI can be used – Provides Single Sign-On experience



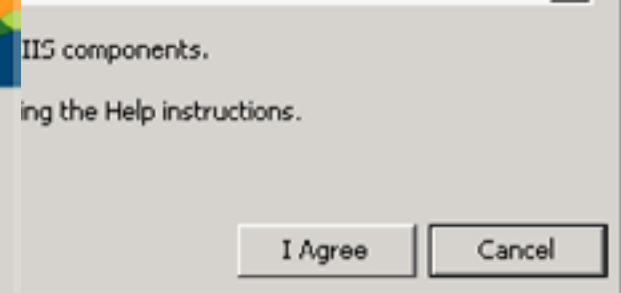
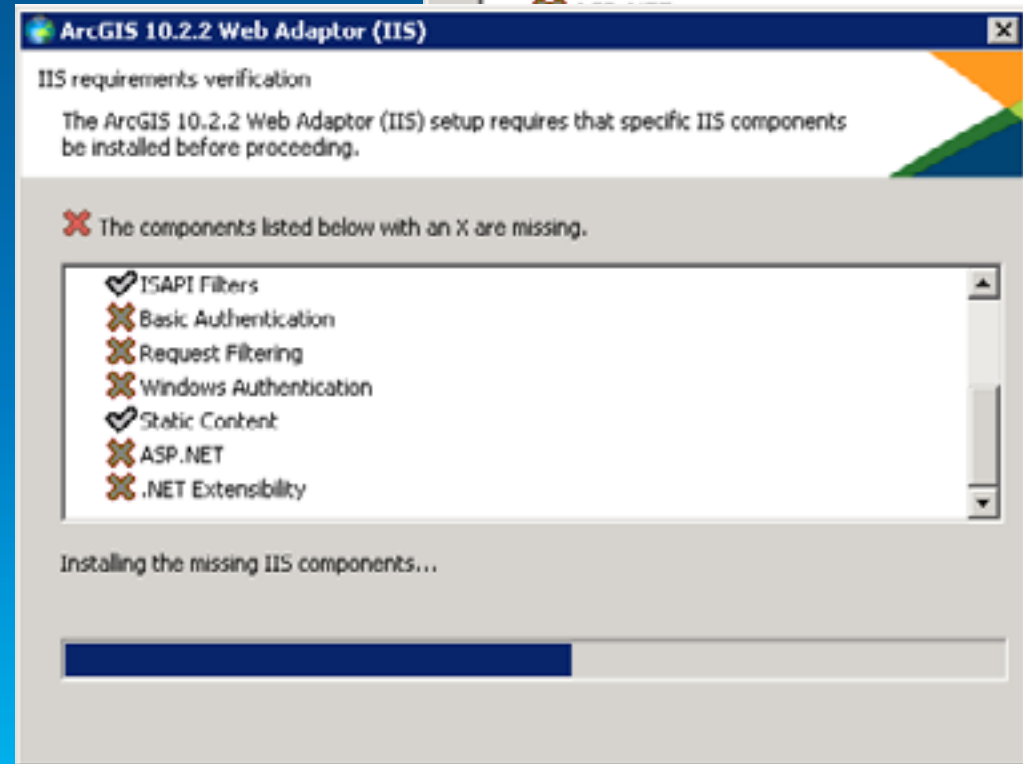
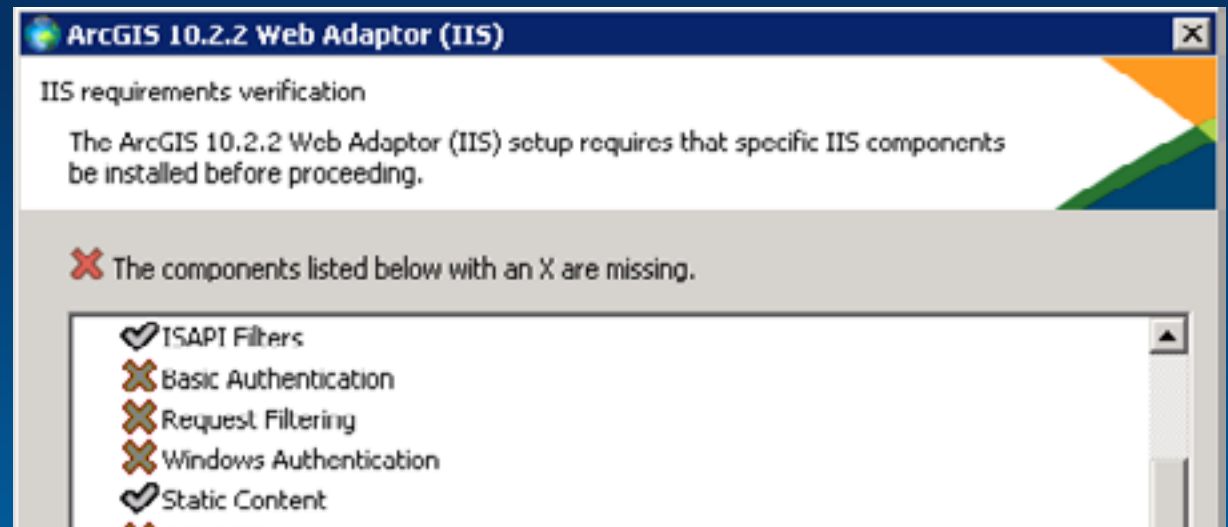
Benefits

- Allows you to block external Administrative Access
- Secures GIS Server like a reverse proxy
- Provides high availability by forwarding requests to machines in a multi – node site in a round robin fashion
- Smart to know if a node goes down or a new node is added
- Leverage IIS capabilities



Install Experience

- Installer is capable of detecting missing IIS components
- Installer will install the missing IIS components



New Functionalities

- Web Adaptor

The screenshot shows a web browser window with the URL `dsdemo1022wa.esri.com/test/webadaptor/server`. The page title is "ArcGIS Web Adaptor". The main content area contains the following configuration options:

- GIS Server URL:** ⓘ
Example: `http://gisserver.domain.com:6080`
- Administrator Username:** ⓘ
- Administrator Password:**
- Enable administrative access to your site through the Web Adaptor.** ⓘ

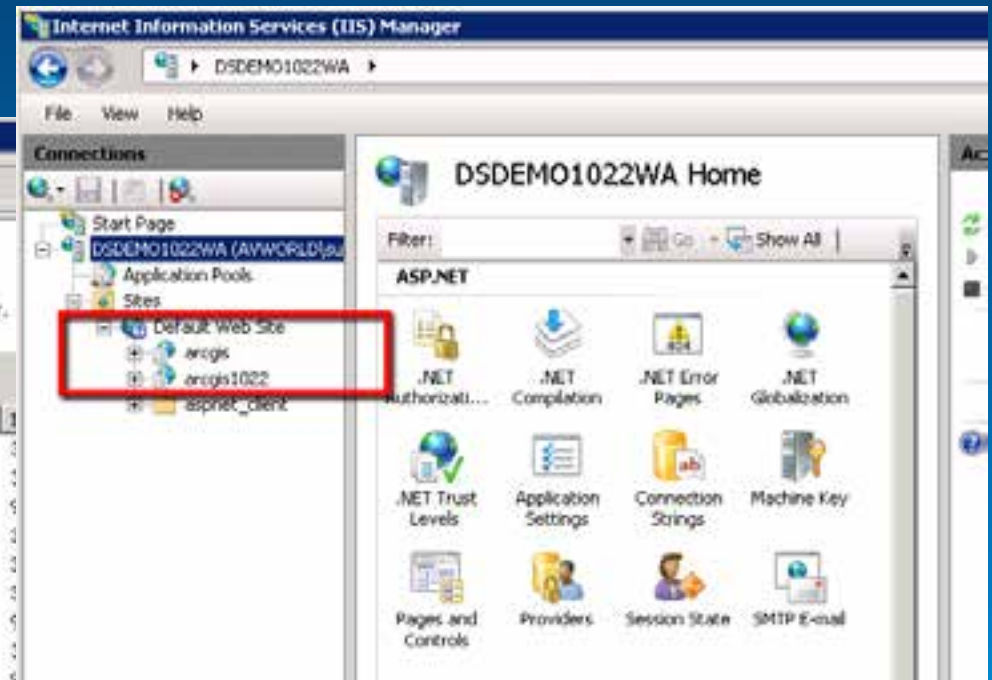
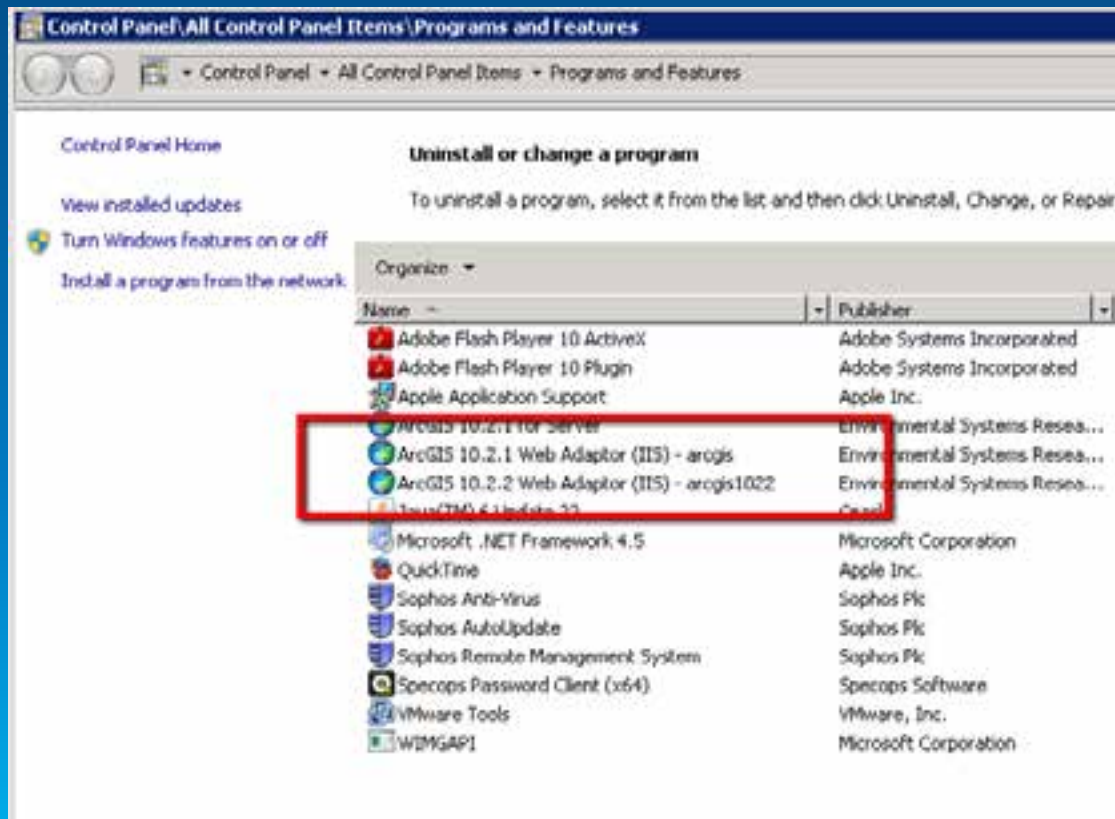
A green information box at the bottom of the page displays the following details:

- The following GIS servers are configured with your Web Adaptor:
 - DSSVRDEMO1022.ESRI.COM
 - DSSVRDEMO1022A.ESRI.COM
- Last updated on 3/12/2014 12:51:40 PM
- Use the following URL to access the Services Directory:
<http://dsdemo1022wa.esri.com/test/rest/services>

Similar to ArcGIS
Manager
in status
e
number

New Functionalities

- Multiple versions of the ArcGIS Web Adaptor (IIS) can be installed on the same machine



New Functionalities

- Microsoft .NET 4.0 and 4.5 are now supported on the ArcGIS Web Adaptor (IIS)
- IIS 8.5, Windows 8.1 and Windows Server 2012 R2 support begins at ArcGIS 10.2.1

The screenshot shows the Internet Information Services (IIS) Manager interface. The main pane displays a list of Application Pools. Below this, the 'Advanced Settings' dialog box is open, showing the configuration for the selected pool. The '.NET Framework Version' is set to 'v4.0', which is highlighted with a red box.

Name	Status	.NET Frame...	Managed Pipeli...	Identity	Applications
ArcGISWebAdapt...	Started	v2.0	Integrated	ApplicationPoolIden...	1
ASP.NET v4.0	Started	v4.0	Integrated	ApplicationPoolIden...	0
ASP.NET v4.0 Cl...	Started	v4.0	Classic	ApplicationPoolIden...	0
Classic .NET App...	Started	v4.0	Classic	ApplicationPoolIden...	0
DefaultAppPool	Started	v4.0	Integrated	ApplicationPoolIden...	1

Advanced Settings

(General)

- .NET Framework Version**: v4.0
- Enable 32-bit Applications: False
- Managed Pipeline Mode: Integrated
- Name: ArcGISWebAdaptorAppPool
- Queue Length: 1000
- Start Automatically: True

CPU

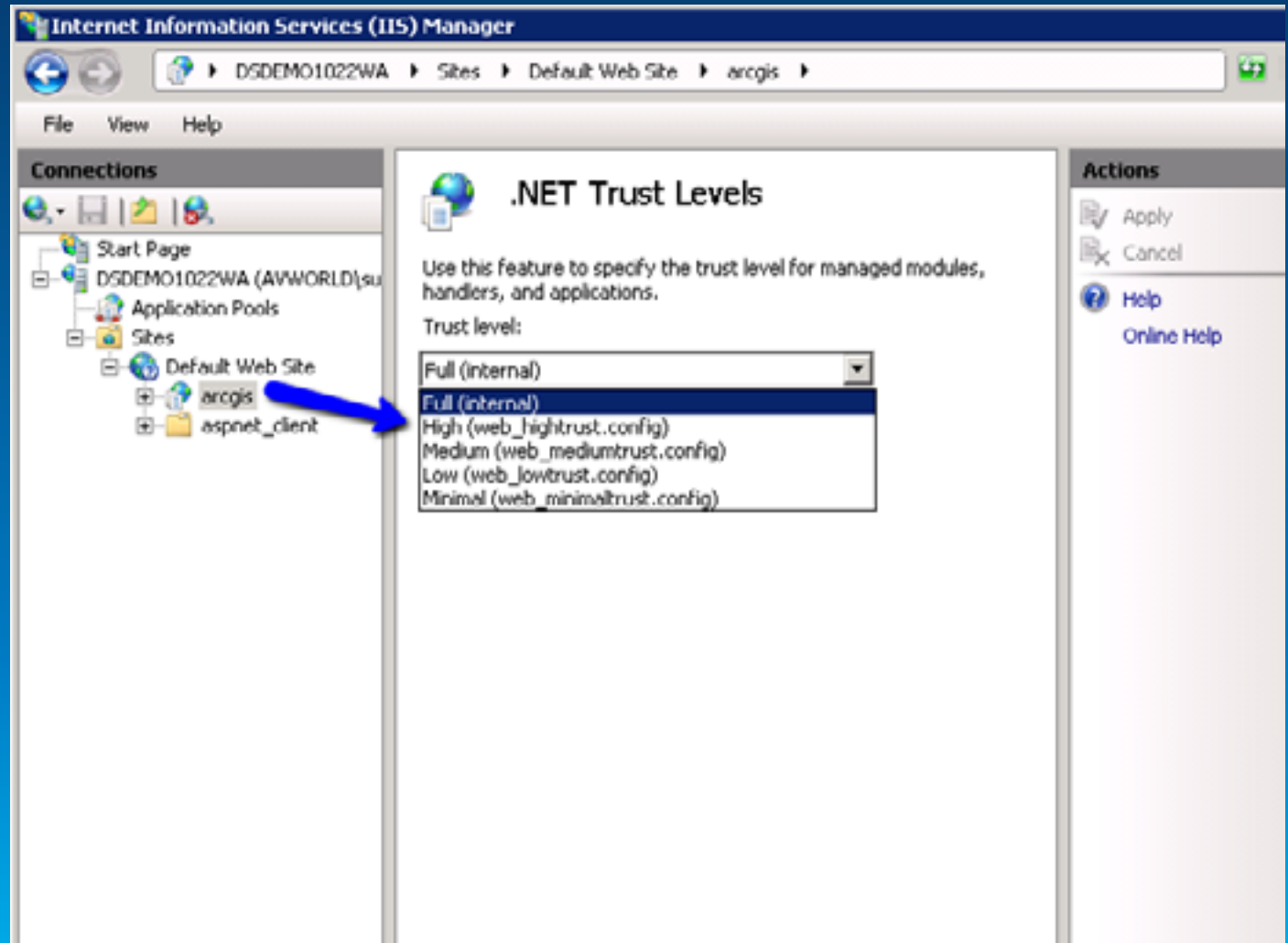
- Limit: 0
- Limit Action: NoAction
- Limit Interval (minutes): 5
- Processor Affinity Enabled: False

.NET Framework Version
[managedRuntimeVersion] Configures the application pool to load a specific version of the .NET Framework. Selecting "No Managed Code" will cause all ASP.NET requests to fail.

OK Cancel

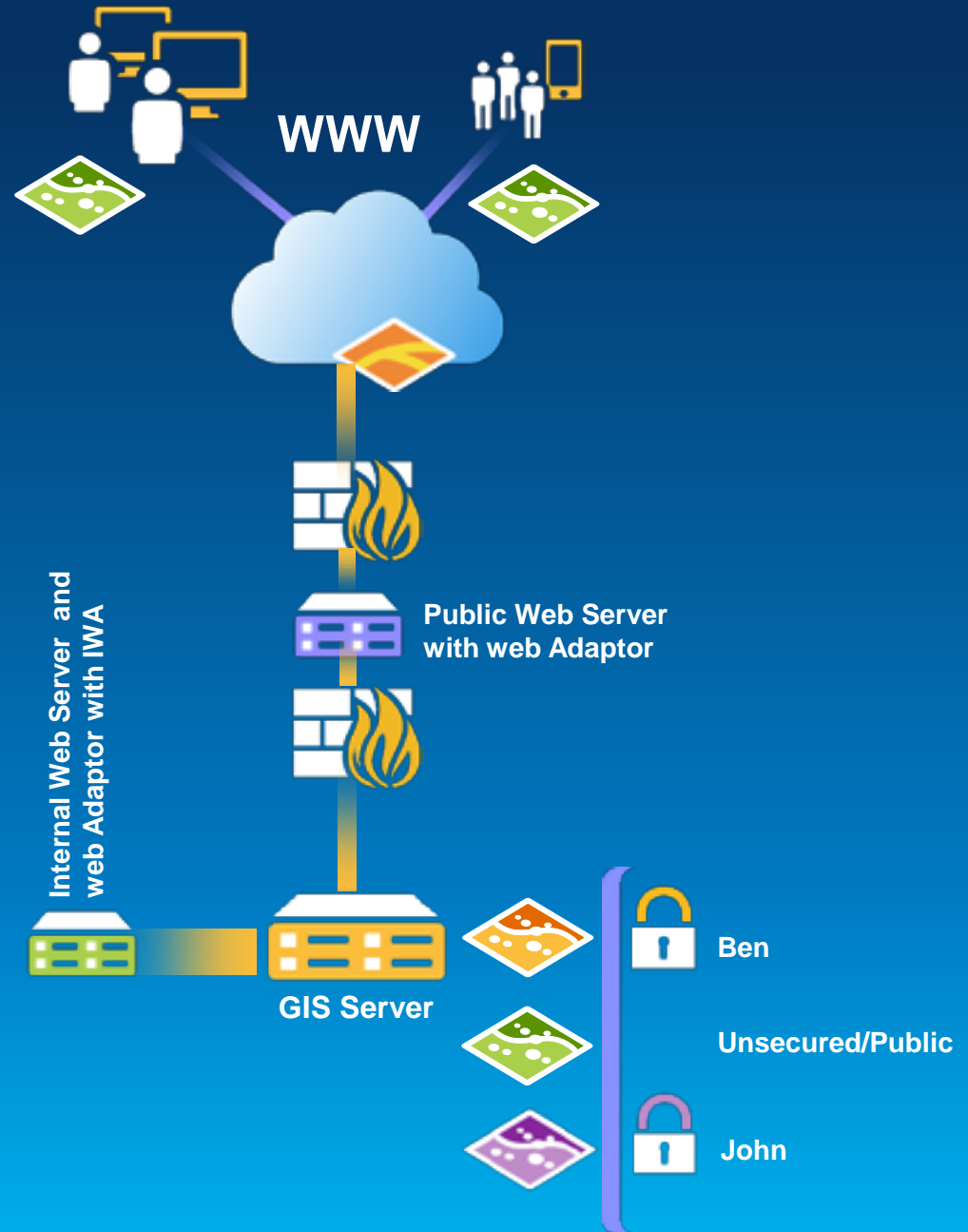
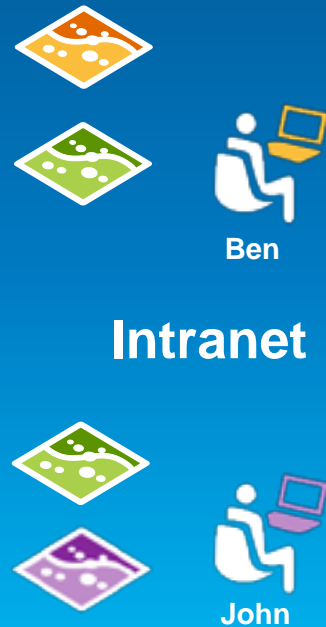
New Functionalities

- The ArcGIS Web Adaptor (IIS) can now be used with Microsoft .NET trust levels of High or Medium



New Functionalities

- Private-Public Service capability in the same site



New Functionalities (10.2.2)

- No longer required to reconfigure the Web Adaptor after changing the communication protocol from http to https or vice-versa

ArcGIS Server Administrator Directory

[Home](#) > [security](#) > [config](#) > [update](#)

Update Security Configuration

Warning

Changing Protocol will cause the web server to be restarted.

Security Configuration

Protocol:

Virtual directories security enabled:

Authentication tier:

Allow direct administrator access:

Portal properties:

Allowed Admin Access IP's :

Format:



Understanding our world.