



# Using Sync with ArcGIS Pro 2.1

Ty Fitzpatrick

Gary MacDougall

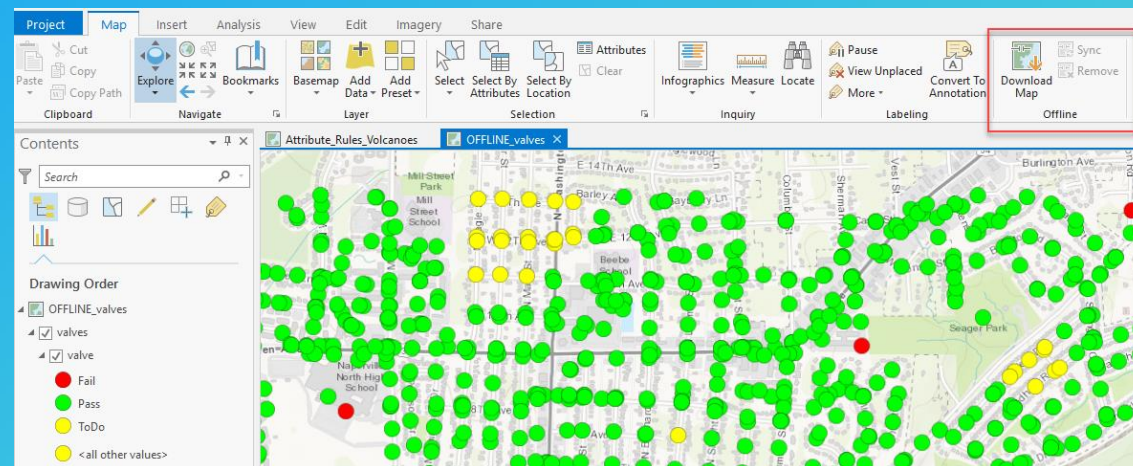
2018 Esri Developer Summit | Palm Springs, CA

# Workflows

- Work with the data from remote locations / in the field
  - Similar to collector workflows
- Continue to work while offline in the office

# Download Maps with ArcGIS Pro 2.1

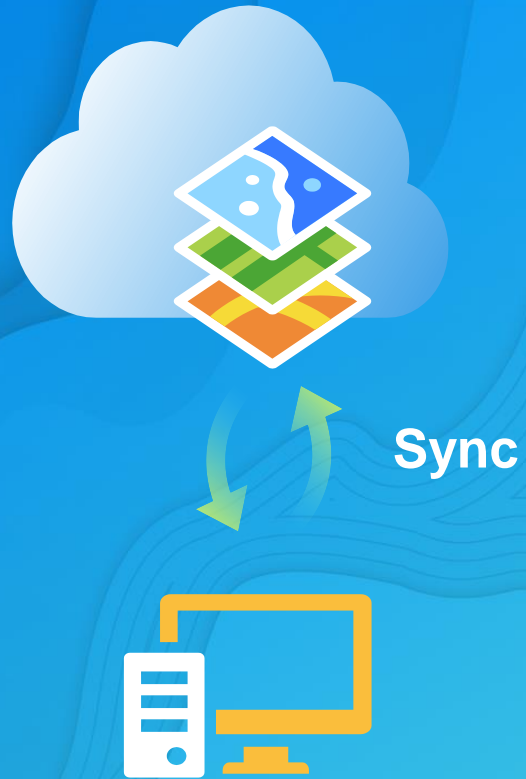
- New commands to take feature service layers offline in Pro 2.1
- Once offline you can disconnected, make edits and then sync when back online
- Support multiple bidirectional syncs (not just check-out / check in like ArcMap)
- Uses feature services sync capability (same as collaboration and collector)
- Data is stored in a mobile geodatabase when offline
- Click remove to switch back to online mode



# Data Requirements

- Feature services layers with sync capability
  - Hosted feature services - service owner or admin can enable sync
  - Enterprise geodatabase feature services - data must be...
    - Non-versioned with Archiving + GlobalIDsor
  - Versioned + GlobalIDs
- Can take basemaps offline if need be in a separate process

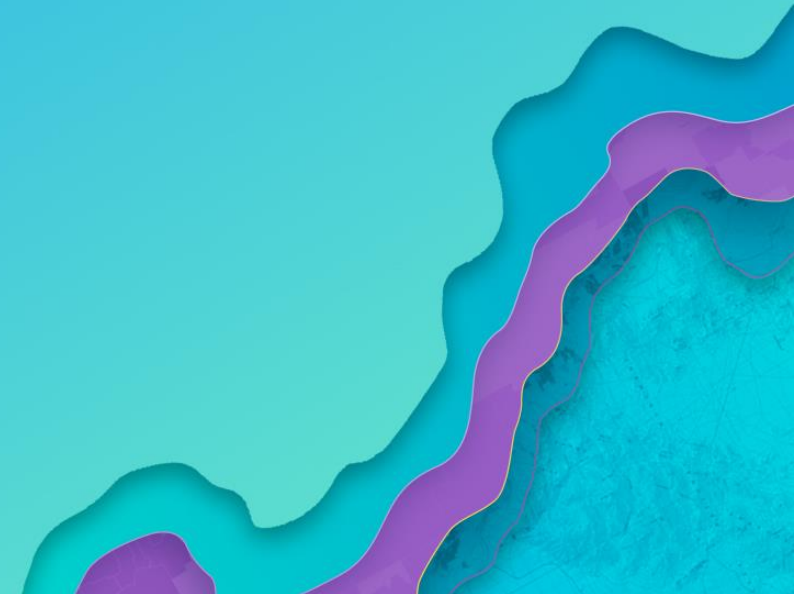
# DEMOS



- Download map, edit and sync in Pro 2.1
- Downloading maps with read only feature service layers
- Working with versioned data

# What's Next

- Support for pre-planned workflows in Pro
- Feature service sync capability with branch versioned data
- Support for Annotation, Attribute rules and Multipatch data
- More options for taking basemaps offline
- Attachment enhancements
- Client side logging





esri

THE  
SCIENCE  
OF  
WHERE