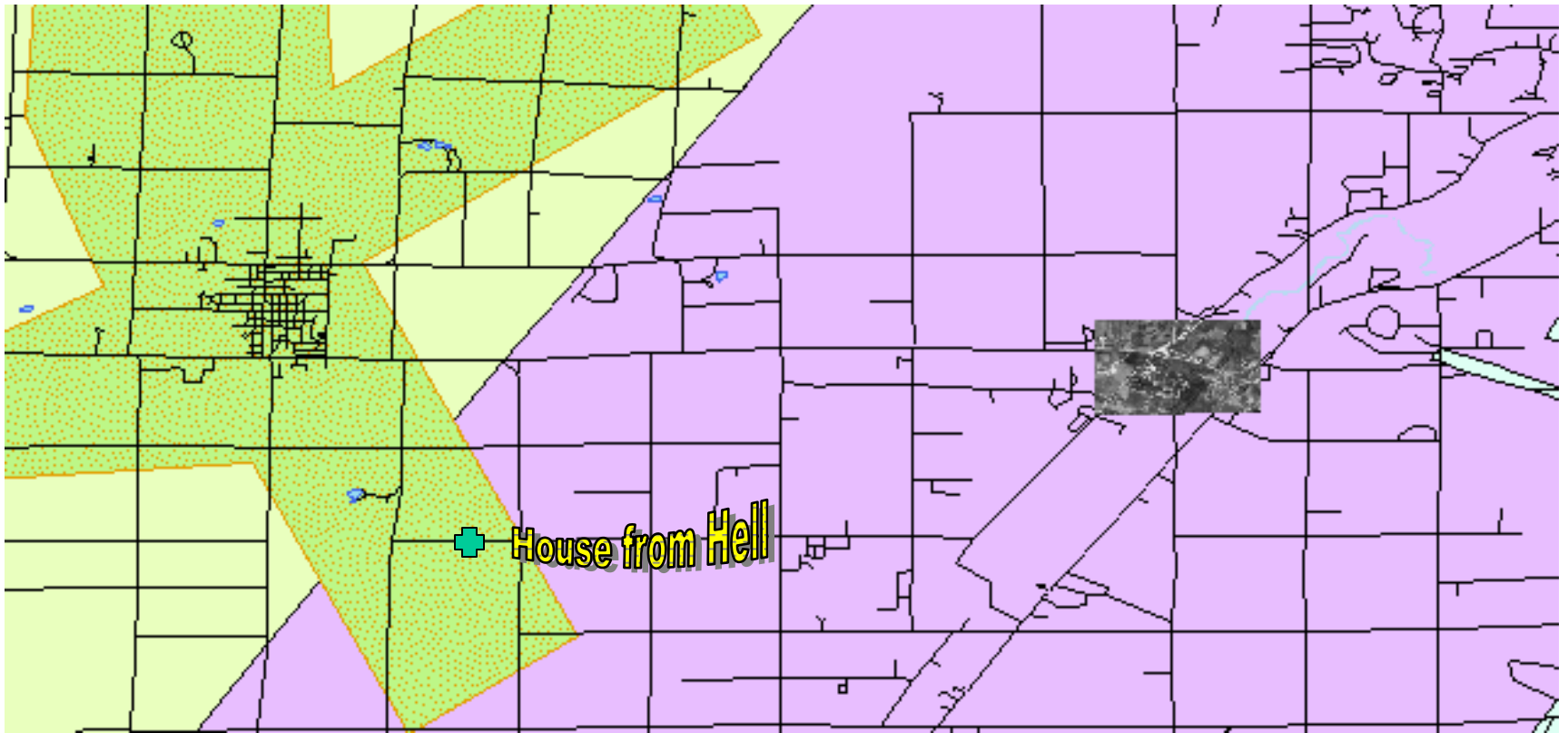
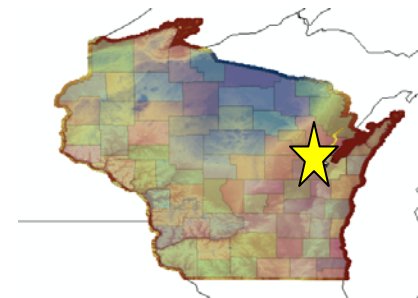


# The Seymour - Oneida Community Arsenic Project



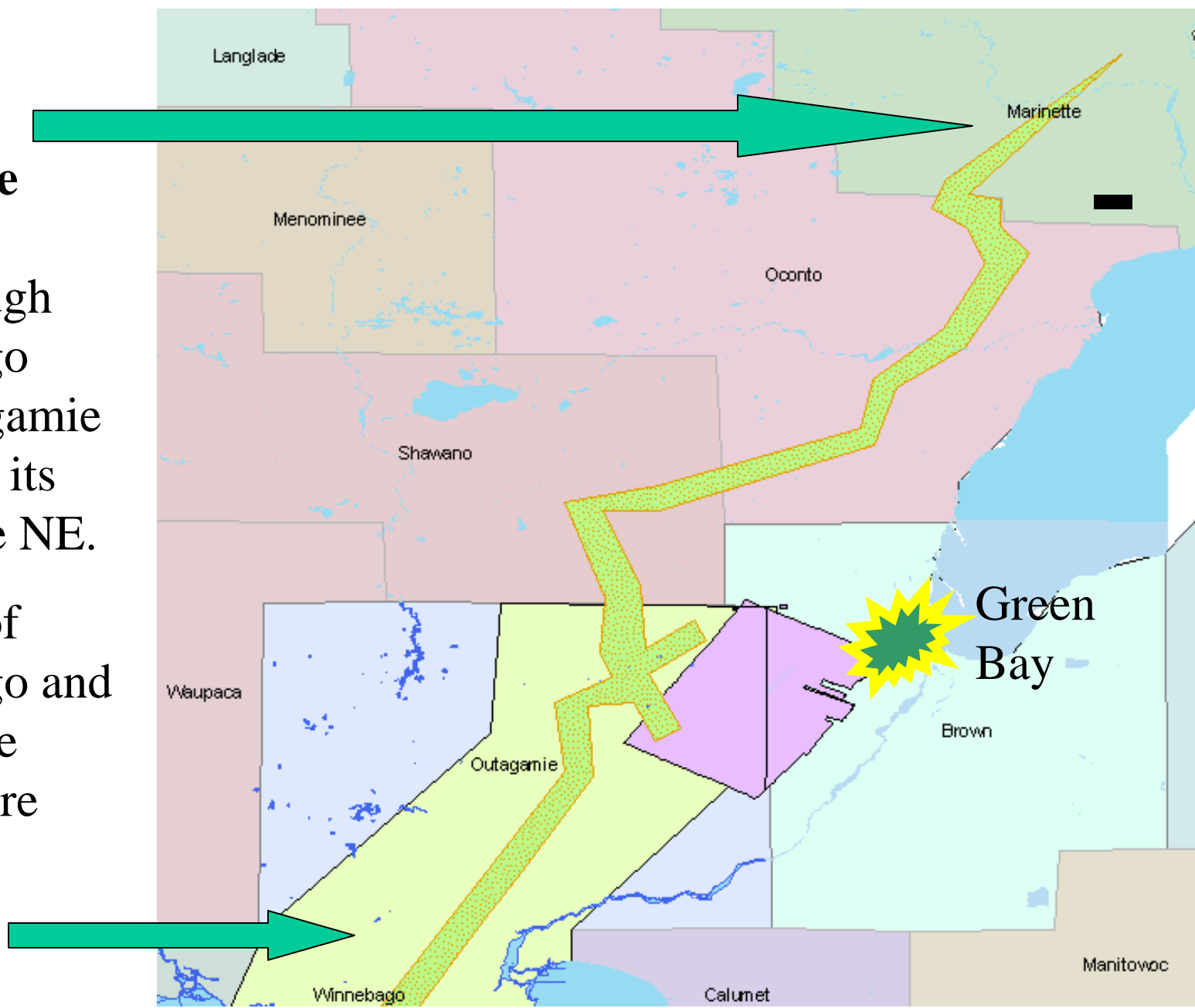
Seymour  Oneida

Two Schools One Problem



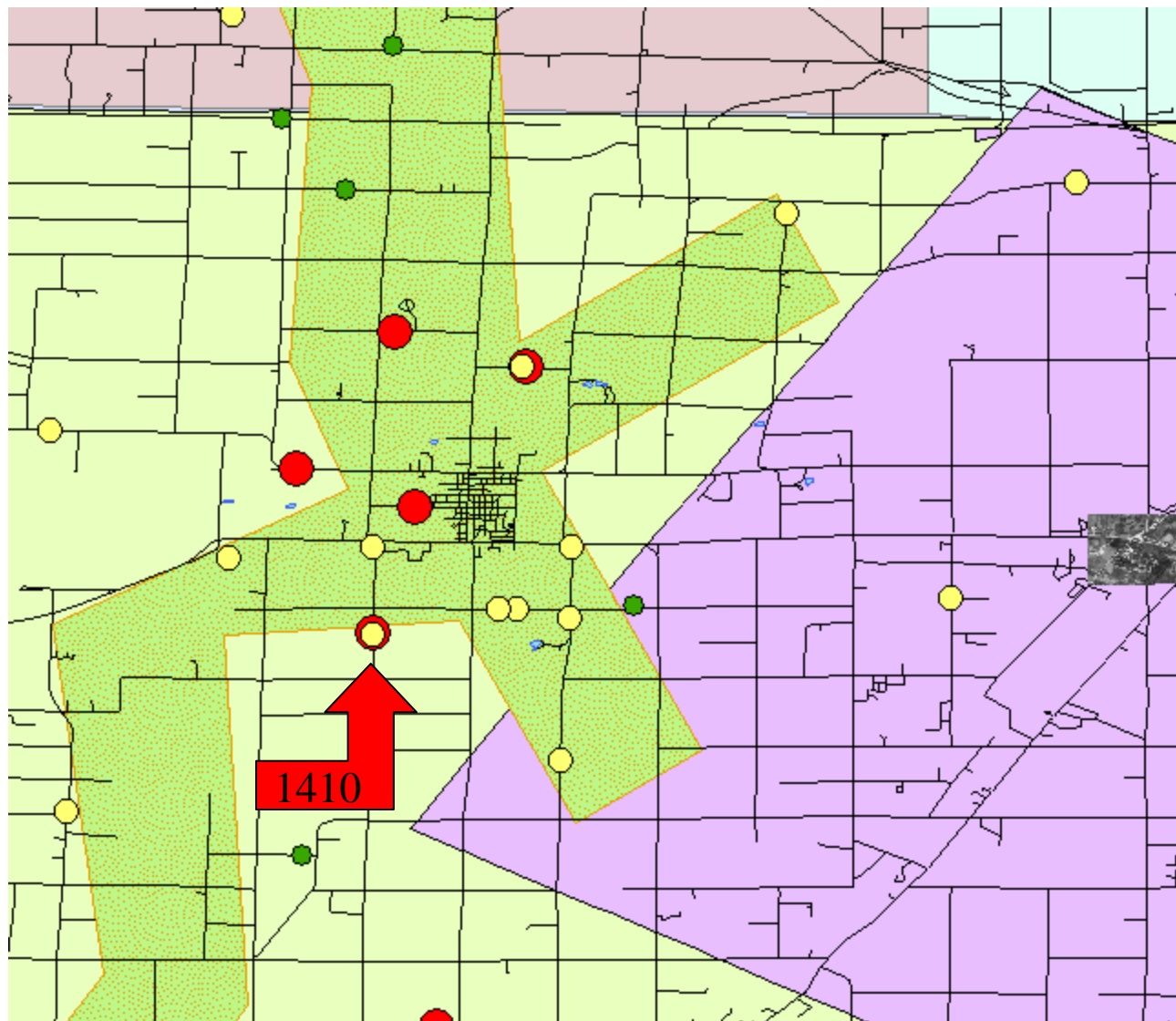
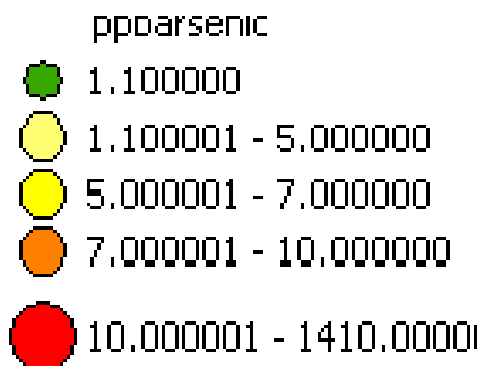
The **Saint Peter Sandstone** formation runs through Winnebago and Outagamie county on its way to the NE.

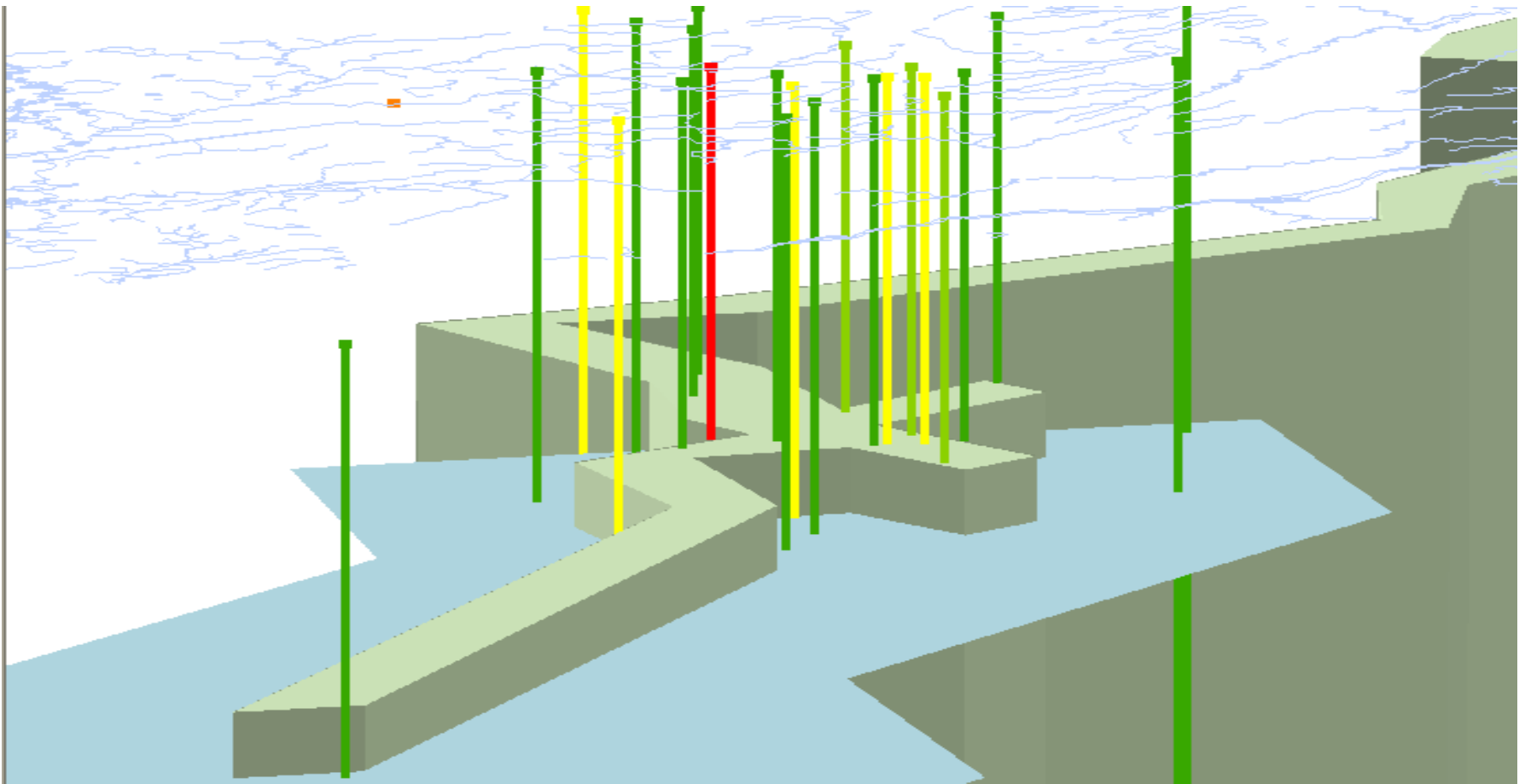
Portions of Winnebago and Outagamie counties are under an **arsenic advisory**.



Preliminary tests establish a pattern of concern in the area.

Levels of arsenic in drinking water over 10 ppb is considered harmful to human health.





Development of a 3-D representation allowed students to further analyze the connection between well depth and contamination.

Over four years the Project has educated over 200 members of the greater Seymour – Oneida community about the quality of their water.

**Shawano county** is not in the arsenic advisory area. Why not?



Demands for contaminant free water will be of real concern across the globe in the future.

