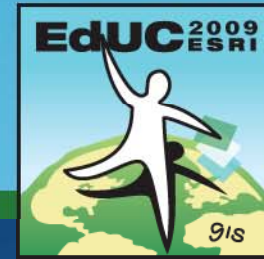


**2009 ESRI Education User Conference**

July 11–14, 2009



## **ArcGIS Explorer in the Classroom**

***Toni Fisher***

***Instructor***

***ESRI***

# Learning objectives

- Describe the capabilities of ArcGIS Explorer
- Discuss ArcGIS Explorer maps, layers, tasks, and results
- View available content at the ArcGIS Explorer Resource Center
- Add content to ArcGIS Explorer
  - ArcGIS Online
  - Local

# ArcGIS Explorer

- **Free and lightweight desktop application**
  - Download from ESRI
  - Frequent release cycle
- **Client to ArcGIS Server**
  - Primary client for 3D services
- **Allows you to:**
  - Add layers and tasks
  - Get results
  - Save as an ArcGIS Explorer map file (.nmf)



# Maps

- Stored as a .nmf file
- Contains:

**Tasks** →

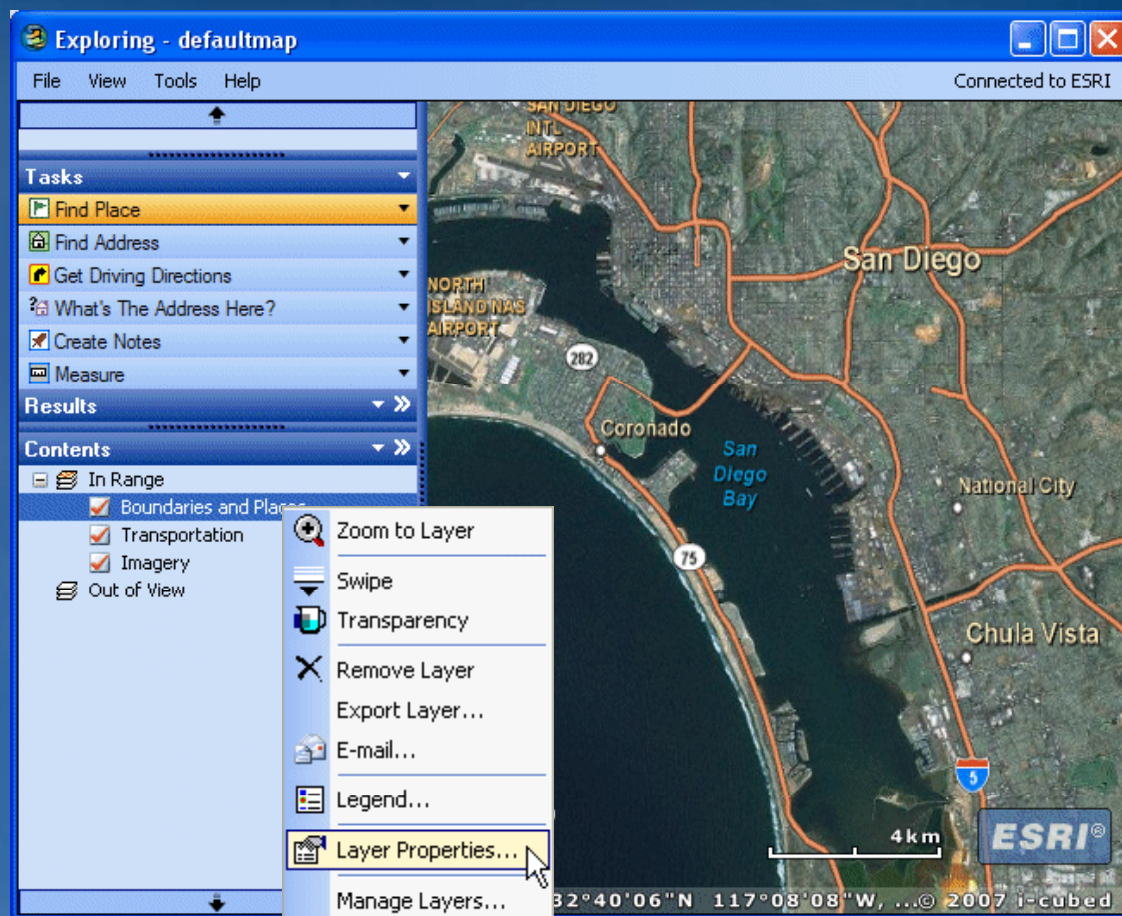
**Results** →

**Layers** →



# Layers

- Thematic representations of geographic information
- Add your own data
  - Geodatabase
  - Shapefiles
  - Raster data
- Add services
  - ArcGIS Server
  - ArcIMS
  - WMS
  - GeoRSS Feed
  - KML



# Tasks

- Ask questions and get answers about your GIS data

The image shows a screenshot of a GIS application interface. On the left, a 'Tasks' menu is open, listing several options: 'Find Place', 'Find Address', 'Get Driving Directions', 'What's The Address Here?', 'Create Notes', and 'Measure'. The 'Find Place' option is selected, and a dialog box titled 'Task Center - Find Place' is displayed in the foreground. This dialog box contains a text input field with 'San Diego' entered, a 'Maximum' dropdown menu set to '20', a checked checkbox for 'Exact match', a blue hyperlink for 'Place finding tips', and a yellow 'Find' button.

Tasks

- Find Place
- Find Address
- Get Driving Directions
- What's The Address Here?
- Create Notes
- Measure

Task Center - Find Place

Enter place to find: San Diego

Maximum: 20

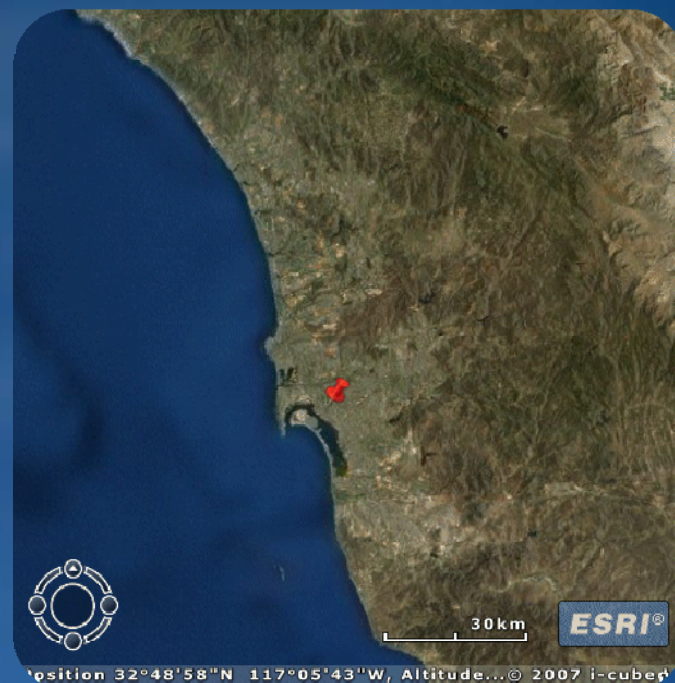
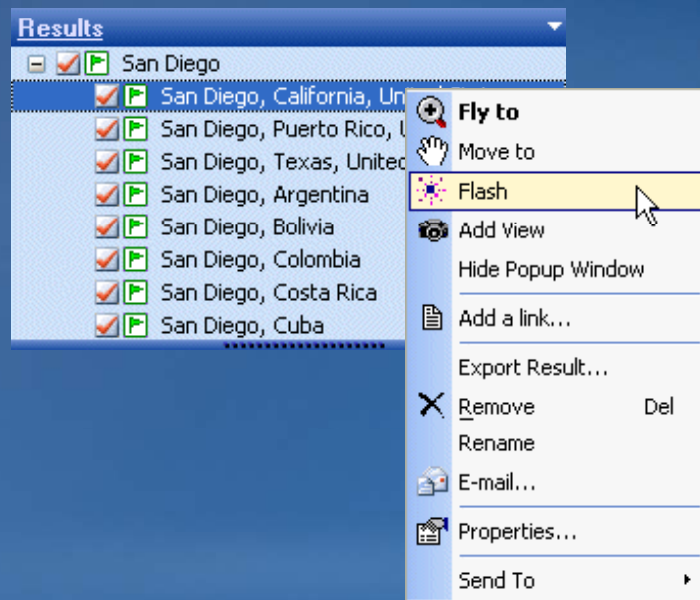
Exact match

[Place finding tips](#)

Find

# Results

- Consist of points, routes, other geometries, tabular data, or text
- Double-click a result to zoom in
- Right click for additional options
- Use as input to tasks



# ArcGIS Explorer Resource Center

- Offers many online resources

- Downloads

- ◆ ArcGIS Explorer
- ◆ ArcGIS Explorer SDK
- ◆ Home server files

- Content

- ◆ Maps
- ◆ Layers
- ◆ Tasks
- ◆ Results

- Showcase to browse, download

- Discussion forum, ArcScripts, ArcGIS Explorer Blog





## Resource Center maps

- Open a base map in ArcGIS Explorer
- Replaces the current map you are using
- Use as a starting point
- Add additional layers and tasks



# Resource Center layers

- Choose layers to add to your current map

## Imagery



[Description](#)

## Transportation



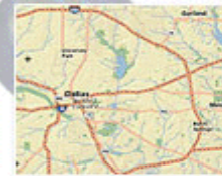
[Description](#)

## US Topo Maps



[Description](#)

## Streets



[Description](#)

## Shaded Relief



[Description](#)

## Boundaries



[Description](#)

## Boundaries and Places



[Description](#)

## NGS World Atlas



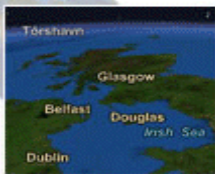
[Description](#)

## Pinkerton 1812



[Description](#)








## 3D Labels



[Description](#)

# Resource Center tasks

- Add additional functionality to ArcGIS Explorer

<p><u><a href="#">Wikipedia Search</a></u></p>  <p><u><a href="#">Description</a></u></p>	<p><u><a href="#">Weather Finder</a></u></p>  <p><u><a href="#">Description</a></u></p>	<p><u><a href="#">Find Nearby</a></u></p>  <p><u><a href="#">Description</a></u></p>	<p><u><a href="#">Business Reports</a></u></p>  <p><u><a href="#">Description</a></u></p>
<p><u><a href="#">Find GNIS Names</a></u></p>  <p><u><a href="#">Description</a></u></p>	<p><u><a href="#">GeoNames Search</a></u></p>  <p><u><a href="#">Description</a></u></p>	<p><u><a href="#">Find Features</a></u></p>  <p><u><a href="#">Description</a></u></p>	<p><u><a href="#">Add Photo</a></u></p>  <p><u><a href="#">Description</a></u></p>

# Resource Center results

- Add existing results to map

## [US State High Points](#)



[Description](#)

## [US Highest and Lowest Points](#)



[Description](#)

## [US National Parks](#)



[Description](#)

## [USGS Science In Your Backyard](#)



[Description](#)

## [NPS Air Quality](#)



[Description](#)

## [2008 ESRI UC Hotels](#)



[Description](#)

# Add your own data

- **Layers**

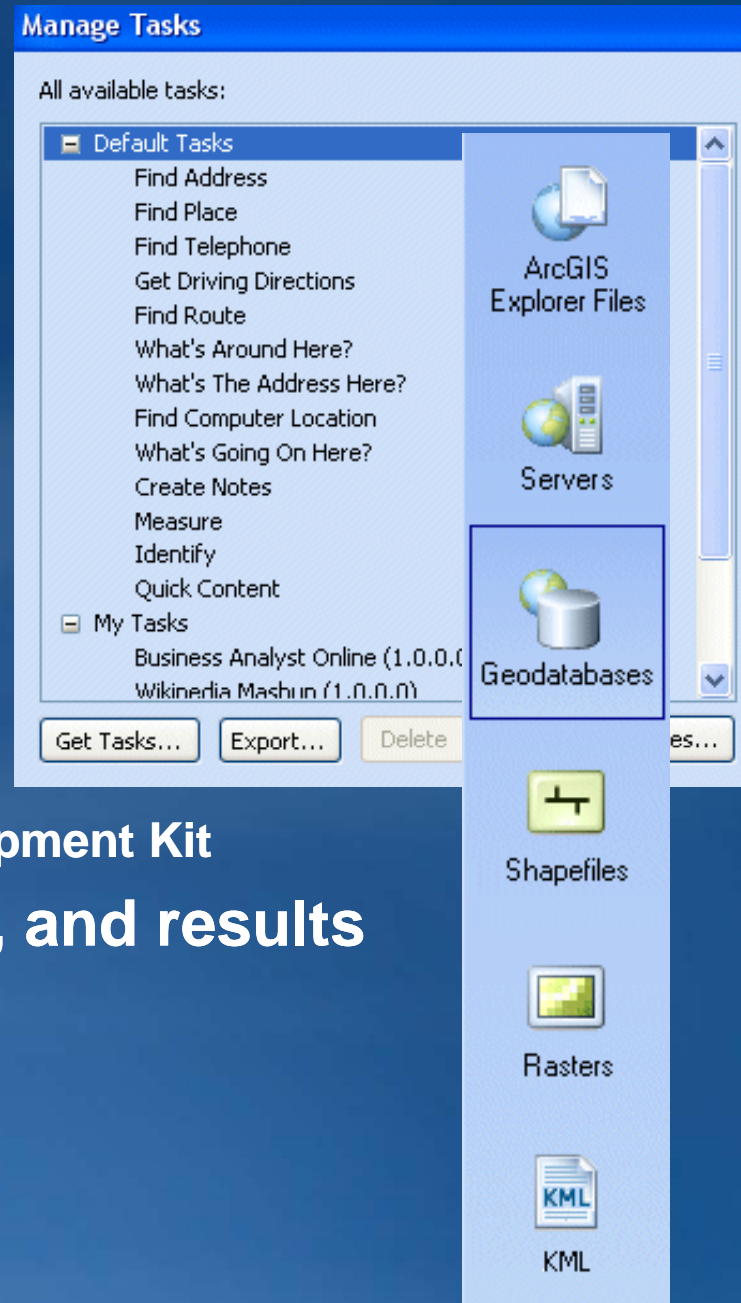
- Geodatabase
- Shapefiles
- Raster data

- **Tasks**

- .dll and .nmf
- Geoprocessing services
- Sample tasks

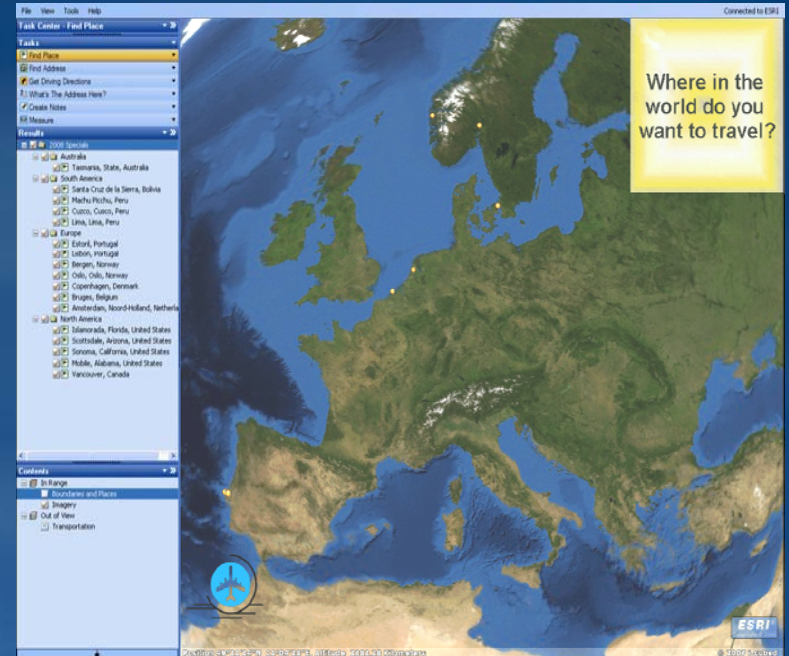
- ◆ ArcGIS Explorer Software Development Kit

- **Save maps with layers, tasks, and results**



# Configuring an ArcGIS Explorer home server

- **Default map (.nmf)**
  - Control startup location
  - Can contain layers, tasks, and results
- **Application look and feel**
- **Application capabilities**
- **Resource center**
  - Central location for maps, layers, tasks, and results



# ArcGIS Explorer home files


- **Configuration file**
  - e2config.xml
- **Defaultmap.nmf**
- **Help files**
- **Examples**
  - Skin file
  - Resource center

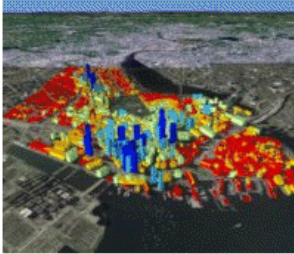
My Custom Resource Center

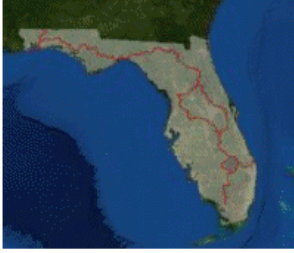
Maps   Layers   Results   Tasks   About this Resource Center

### Maps

When you open a map from this Resource Center, it will replace the current map. You can save this map locally and make it your current map. These are the available maps...

- **Corvallis**  


This map contains layers for Corvallis, Oregon.
- **Boston**  


This map contains 3D buildings in the city of Boston.
- **Florida**  


This map shows scenic trails in Florida.

# Lesson Review

- **ArcGIS Explorer is a free, lightweight desktop application**
- **ArcGIS Explorer maps are stored as .nmf files and may contain layers, tasks, and results**
- **Content can be added from online services or local resources**



# Exercise

- **Open ArcGIS Explorer**
- **Use built in content**
- **Access the ArcGIS Explorer Resource Center**
  - Add the US Highest and Lowest Points results
  - Add the US National Parks results
  - Add the Weather Finder task
- **Add local data**
- **Save an ArcGIS Explorer map document**