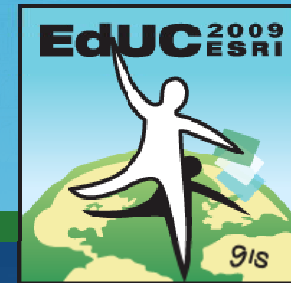


2009 ESRI Education User Conference

July 11–14, 2009



Introduction to ArcGIS Online

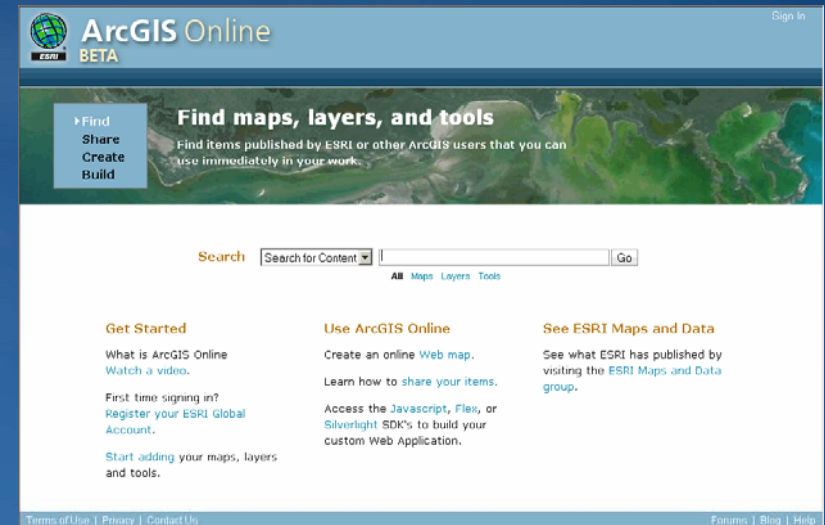
Miriam Schmidts
mschmidts@esri.com

Overview

- **What is ArcGIS Online?**
- **What's new at 9.3.1?**
- **ArcGIS Online Membership System**
- **ArcGIS Online Base Maps, MS Virtual Earth**
- **Licensing**
- **Supported item types for Sharing**
- **Layer packages**
- **Current status**

What is ArcGIS Online?

- A system for sharing, finding and using GIS content across the Web
- ArcGIS Online includes the following features:
 - A search engine for geographic information
 - A system for storing and sharing geographic information online
 - Base maps and GIS tools from ESRI and the GIS community
 - Simple Web maps, Web applications, and online SDKs
 - A community of users
 - Online resources



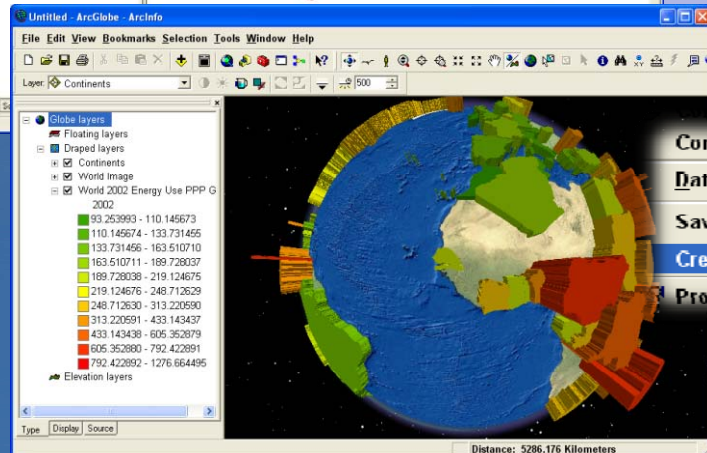
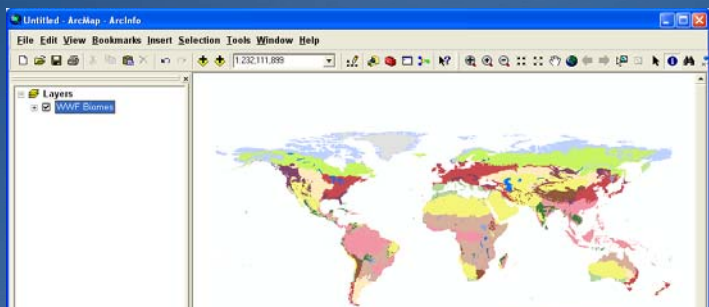
What's new at 9.3.1?

- **New Base Map Services**
 - Virtual Earth services for all ArcGIS products
 - Topo Maps and World Imagery
 - Demographics and BA reports
 - Image services
 - Map templates
 - Data downloads
- **New Location Services**
 - Geocoding, Routing, Drive Time services
- **New and Updated Online SDKs**
 - JavaScript, Flex, and Silverlight
- **New Community GIS Feature**
 - Explore, share, and create GIS resources
 - Lightweight, online GIS



ArcGIS 9.3.1 Layer Packages

- Single compact file that is easily shared
- Create using ArcGIS Desktop (ArcMap and ArcGlobe)
- Use in ArcGIS Desktop and ArcGIS Explorer
- Share via E-mail, network, DVD, or ArcGIS Online



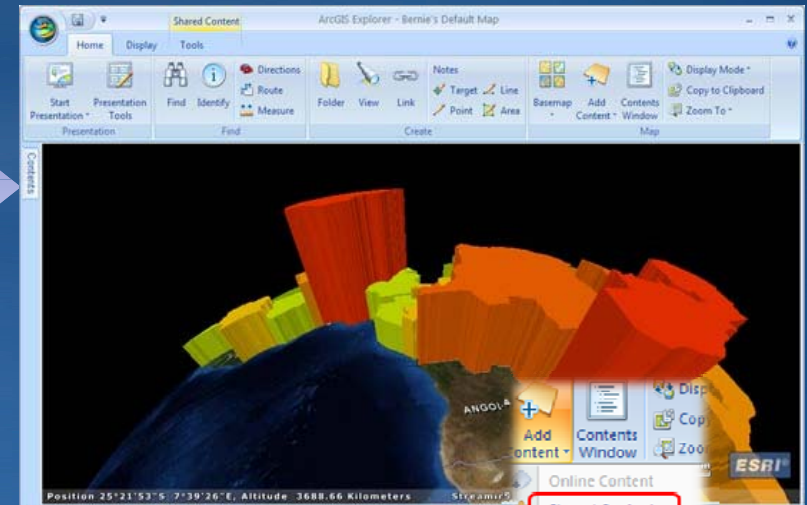
Convert Symbology to Representation...

Data

Save As Layer File...

Create Layer Package...

Properties...



ArcGIS Desktop
ArcGIS Explorer

ArcGIS Desktop

ArcGIS Online Membership System

- ArcGIS Online is a membership system
 - Register your global account
 - Login to use it
- Membership has privileges
 - You control access to items you share
 - You are granted access to items shared by others
 - You join and share information using groups
 - Organizations self-administer their own users and groups
- Anonymous use supported



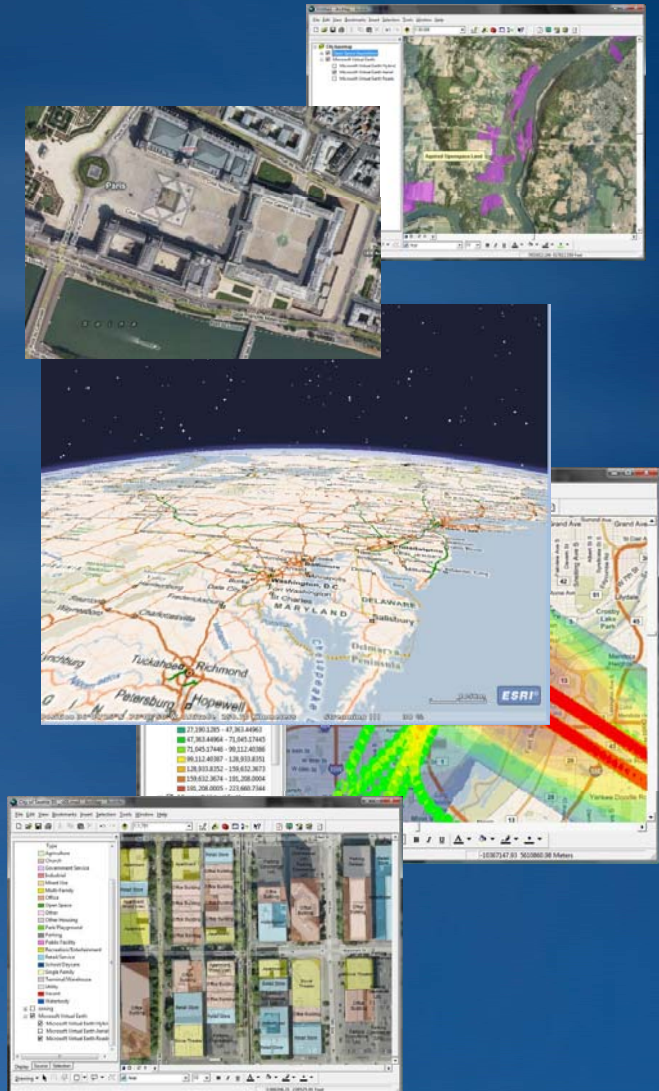
The screenshot shows the ArcGIS Online BETA registration interface. At the top, there is a navigation bar with the ESRI logo, the text 'ArcGIS Online BETA', a search box labeled 'Search for Content', and links for 'All', 'Maps', 'Layers', and 'Tools'. Below this is a 'Home' link. The main heading is 'Register your ESRI Global Account'. The form prompts the user to 'Enter your ESRI Global Account information.' and includes input fields for 'Username:' and 'Password:'. A link for 'Forgot your password?' is provided below the password field. A 'Register' button with the ESRI logo is at the bottom. Below the button, there is a link for 'Don't have an ESRI Global Account?' and a sub-link 'Create an account'.

ArcGIS Online Licensing

- **ArcGIS Online is a product that you license and pay for. Some aspects/levels of the product are free, but others are not.**
- **Available to all ArcGIS users for free are:**
 - **Base map services and layers from ESRI and the GIS community**
 - **Online SDKs for developing web maps with JavaScript, Flex, Silverlight, etc.**
 - **Search, item storage (limited), and group membership (requires registration)**
- **For purchase are:**
 - **Subscription services to maps and GIS tasks**
 - **Additional storage for geographic information sharing**
 - **Access to Web Mapping APIs (free for ArcGIS Server users)**

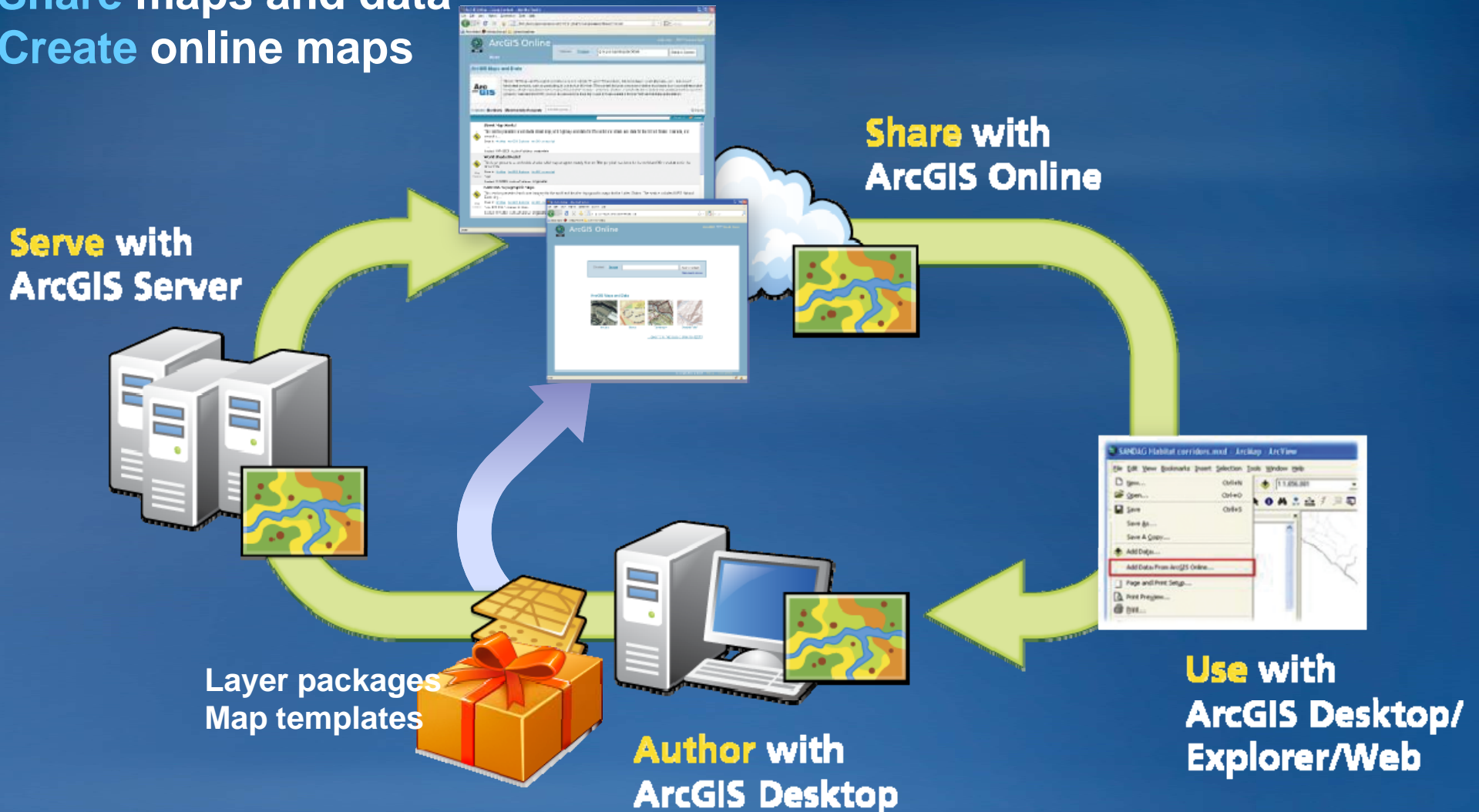
ArcGIS and Virtual Earth (Bing Maps) services

- **Global high-performance base maps and services seamlessly integrated with ArcGIS**
 - At 9.3.1 seamlessly integrated into ArcGIS
- **Up-to-date, multi-scale base map (aerial imagery, roads, hybrid)**
- **Included at no cost with ArcGIS Desktop as part of maintenance**
- **Free, built-in, 90-day evaluation for ArcGIS Server**
 - Free 90-day built-in evaluation
 - Includes .NET ADF and Web SDKs (Java Script, Flex and Silverlight)



ArcGIS Sharing

- Explore and Use maps published by ESRI and ArcGIS users
- Upload maps and register ArcGIS Server map services
- Share maps and data
- Create online maps



Sharing – Supported item types

- **Maps**

- ArcMap document (MXD)
- ArcGIS Explorer Document (NMF)
- ArcGlobe Document (3DD)
- ArcScene Document (SXD)
- ArcReader Documents (PMF)
- ArcGIS Explorer Custom Application (NCFG)

- **Layers**

- Layer file (LYR)
- Layer package (LPK)
- ArcGIS Explorer Layer (NMC)
- ArcGIS Server services (Map, Globe, Image, Geodata)

- **Tools**

- ArcGIS Explorer Tools (EAZ)
- ArcGIS Server services (Network Analyst, Geoprocessing, Geocoding)

Current Sharing Status

- **Public Beta Release planned for mid-June**
 - Application open to all users
 - Registered users may store up to 1GB of content each for free
 - Anticipate Beta Period of 3-4 Months
- **Full Release targeted for early Q4**
 - Users may purchase and manage additional storage
 - Organizations may administer their users

Questions?



Exercise overview

- Create an ArcGIS Online account
- Navigate ESRI base layers
- Create a web-map using ESRI base layers in combination with user-provided layers
- Geocode a table of addresses using an ArcGIS Online service
- Create and upload layer packages

- URL: <http://www.arcgisonline.com/home>