



Career Academies of St. Johns

Experience. The Difference.



Academy of Environmental and Urban Planning



Creekside High School
Career Academies



Saint John County School District Vision for the Academies

- Career Academies are “small, personalized learning communities within a high school”
- Students are grouped with a core group of teachers – promoting a family-like atmosphere and close student-teacher ties.
- Partner with business to provide input into relevant skills & provide real-world experiences
- Align with Targeted Occupations and create pathways to high-skill, high-wage careers





Career Academies of St. Johns
Experience. The Difference.

Focus areas

- Integrating technology in curriculum
- Project-based and service learning
- Business involvement
- Student internships – 100% placement
- Teachers in Business externships
- Industry Certifications



Academy Faculty

Environmental and Urban Planning



Kevin Davenport
Civil Engineering 1-4
Engineering Club
Robotics Club



Ali Pressel
Intro to Env. Tech 1
Environmental Tech 2
Land Resources 3&4
AP Envi. Science
Environmental Club

Emerging Technology



Lynda Kelly
New Media
Digital Video & Sound
Web Design
FBLA



Kathy Sinardi
Computing for College & Careers
Networking 1-3

Welcome to Creekside High School



282 students

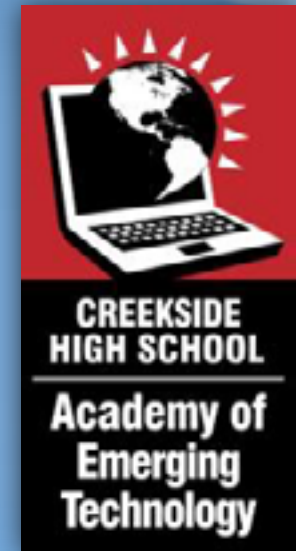


1,850 students

Opened in 2008-09

With 2 Career Academies

CA = 35% of entire school



377 students

Environmental and Urban Planning Enrollment

- Open entry – open exit to serve ALL students
- Recruitment process
- Enrollment is up!

Year	Environmental & Urban Planning
13-14	282 (30% female)
12-13	254
11-12	218
10-11	141
09-10	95
08-09	60



Business Partner Collaboration

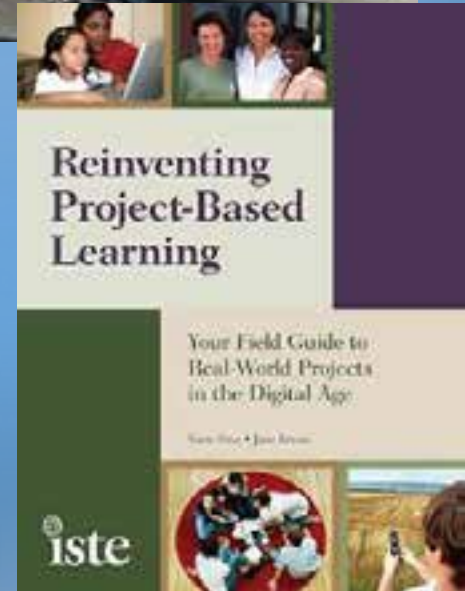
- § Serve as Advisors to keep curriculum current
- § Provide input on relevant industry certification
- § Provide meaningful projects with real-world application
- § Provide sequenced work-based learning opportunities
 - § Field trips
 - § Speakers
 - § Job shadows
 - § Internships
 - § Scholarships



Environmental and Urban Planning Business Partners



Project-Based Learning Initiatives



Integrating GIS into a Career Academy

Geomentoring Program





The GeoMentor Program

TAYLOR ENGINEERING, INC.



GeoMentors with St. Johns County Public Works and Taylor Engineering

- Guest Speakers in the classroom
- GIS Day Activity creation and implementation
- Geospatial Mapping Club assistance
- Guidance in student GIS Certification

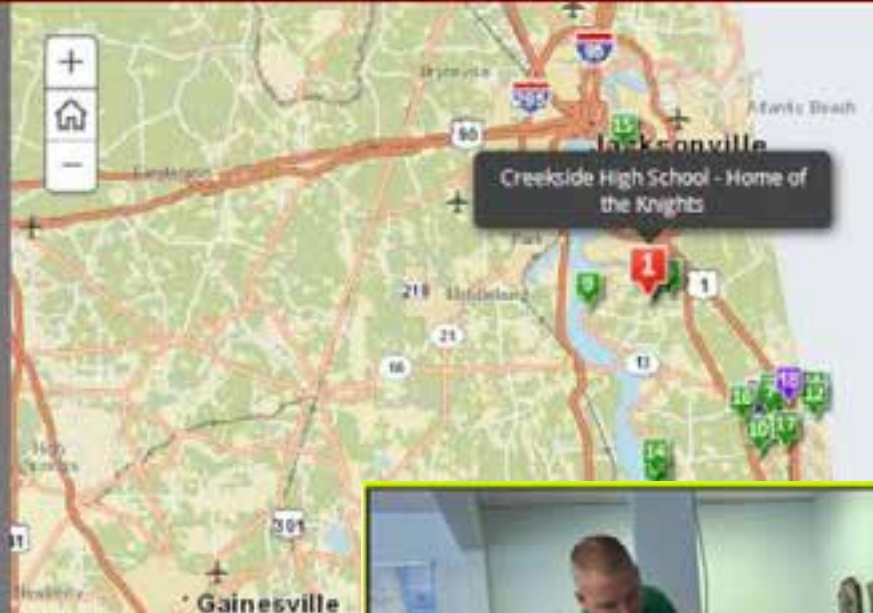
GIS Day 2011-2013 with Saint Johns County Public Works



Summer Internship Saint Johns County Public Works

Andre & David's 2013 Summer Internship

Creekside High School Career Academy internship with St. Johns County Public Works Department



[Career Academy Internship StoryMap](#)



GIS Field Studies in Costa Rica

GIS Activities with 5th grade students



Community Trash-Mapping Project with Geoporter



Integrating GIS in the Future Academy Projects...Many Possibilities

