

MISSISSIPPI 
POWER

A SOUTHERN COMPANY

GULF 
POWER

A SOUTHERN COMPANY

SAVANNAH 
ELECTRIC

A SOUTHERN COMPANY

SOUTHERN 
COMPANY

Energy to Serve Your World[®]

ALABAMA 
POWER

A SOUTHERN COMPANY

GEORGIA 
POWER

A SOUTHERN COMPANY

CUSTOMER OUTAGES

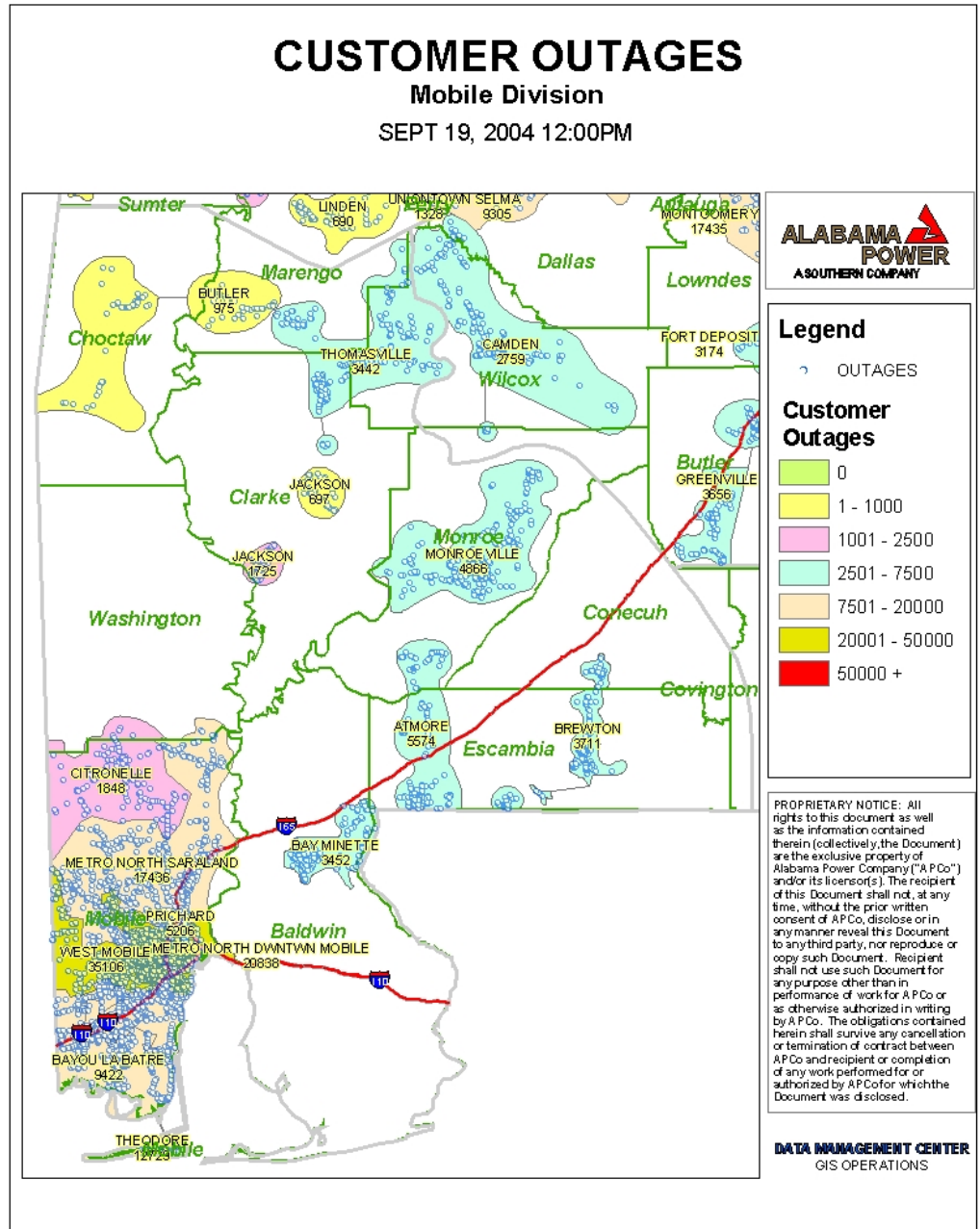
Mobile Division

SEPT 19, 2004 12:00PM

Outage information based
On Operating Centers

Ranges based on severity

Indicators depicting switch
Location related to outage



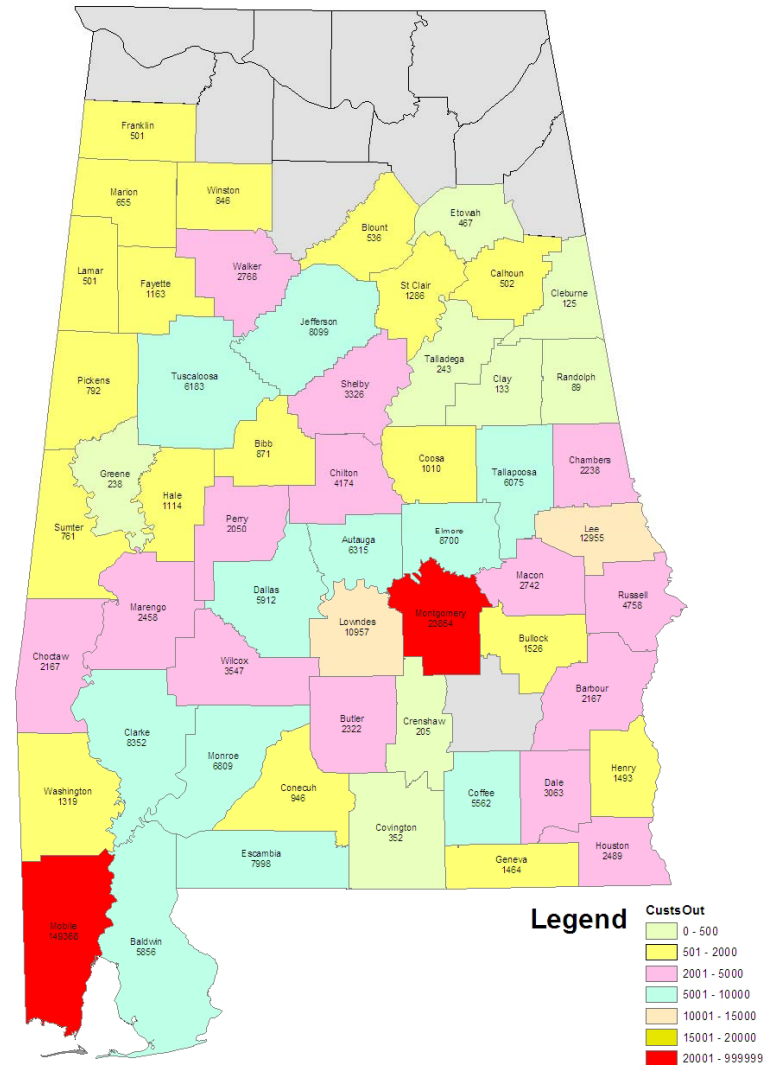
CUSTOMERS OUT PER COUNTY

SEPTEMBER 16, 2004 8:30AM

Point outages (switches)

Allows the use of other polygons to depict outage impacts

This is outages per county ranged by severity



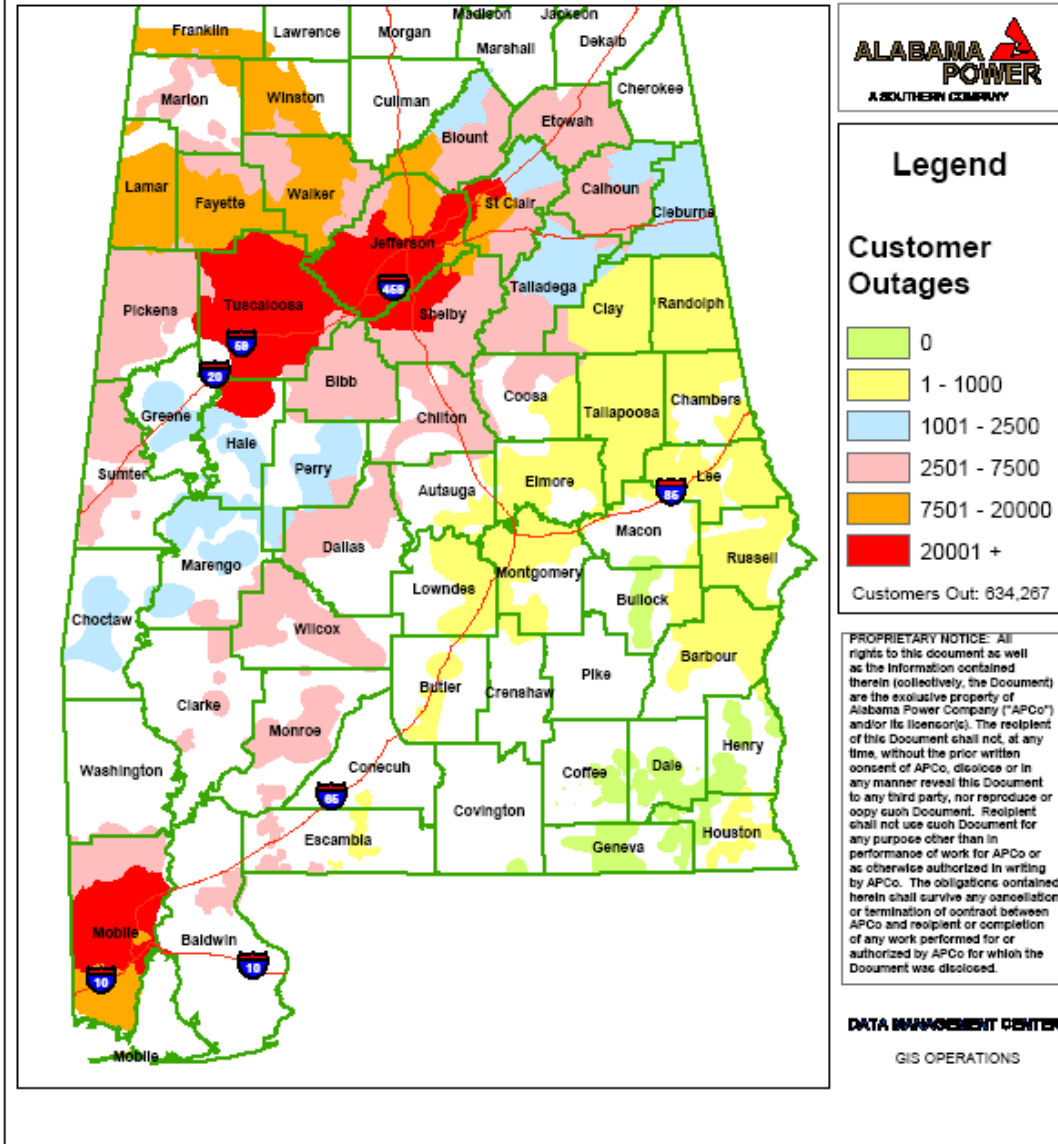
OUTAGE DENSITY SUMMARY OPERATION CENTER LEVEL

AUGUST 30 7:00 AM

Hurricane Katrina

Continued use of OMS
Summary data

This is outages per
Operating Center ranged
by severity

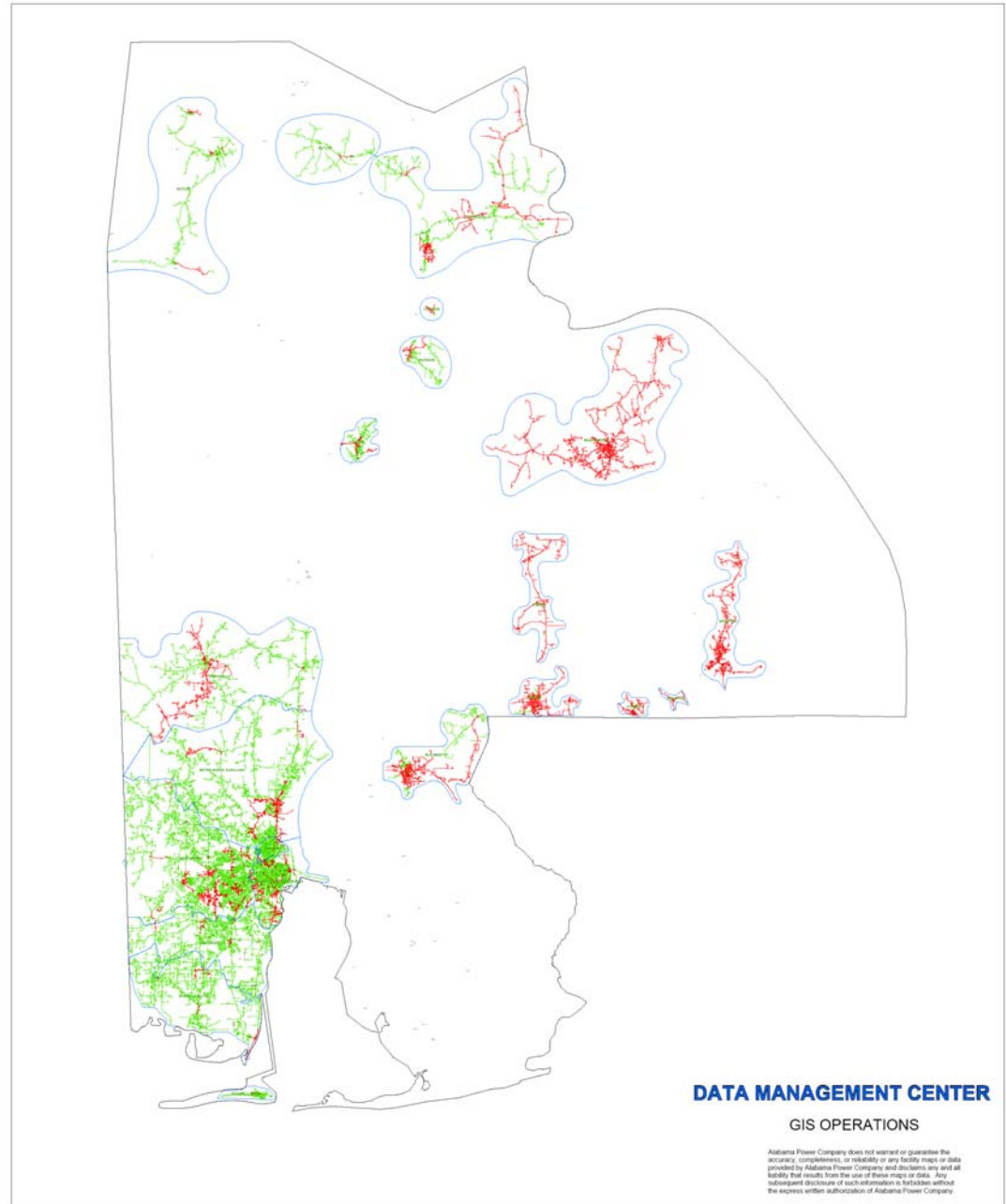


Hurricane Katrina

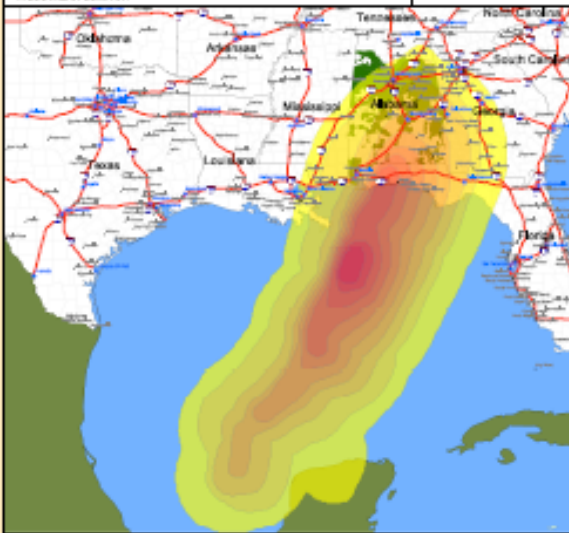
**Continued use of OMS
Summary data, but used
switch information to run
feeder trace**

**This map shows feeders
out (green) and feeders on
(red) in the Mobile area**

**Hourly updates took most
of the hour to process!**

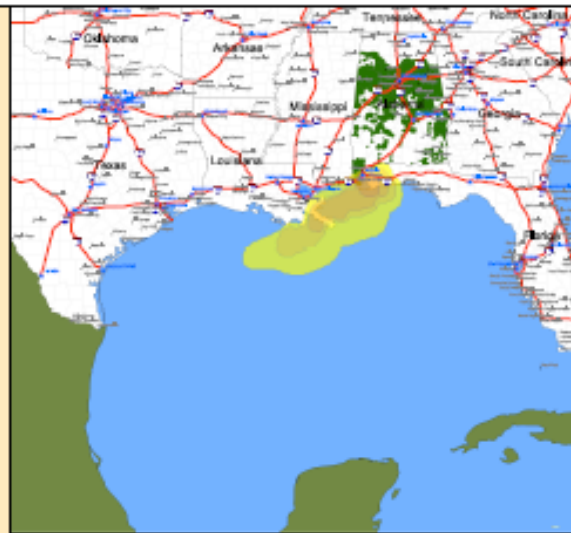


Alabama Power Hurricane Impact Analysis



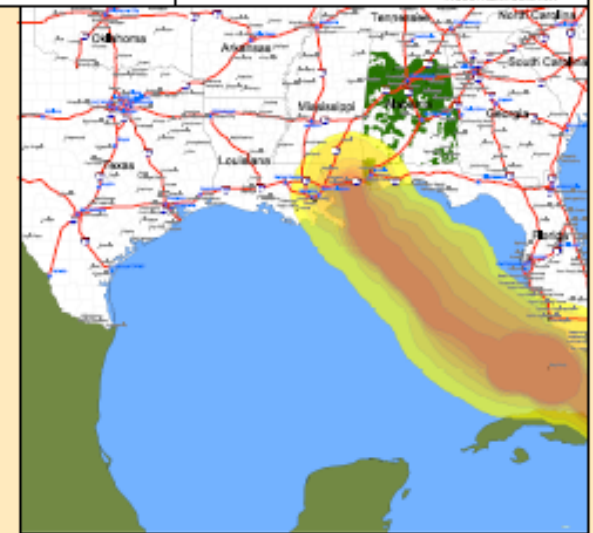
OPAL
October 4th, 1995
475,889

Speed_MPH
40 60 70 80 90 100
Cities with Population under 100,000
Cities with Population over 100,000



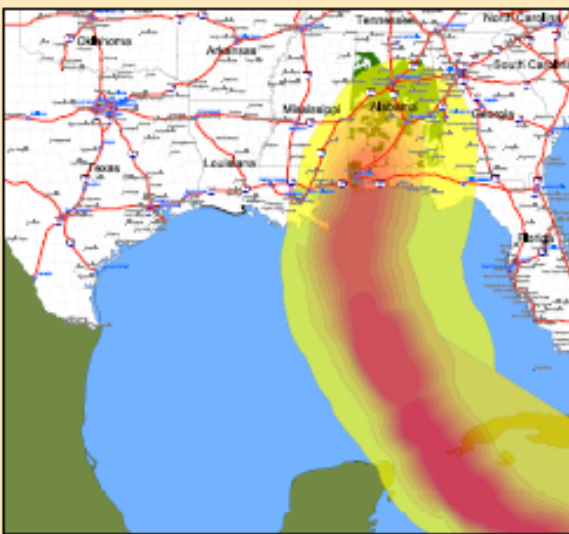
DANNY
July 19th, 1997
36,605

Speed_MPH
40 60 70 80 90 100
Cities with Population under 100,000
Cities with Population over 100,000



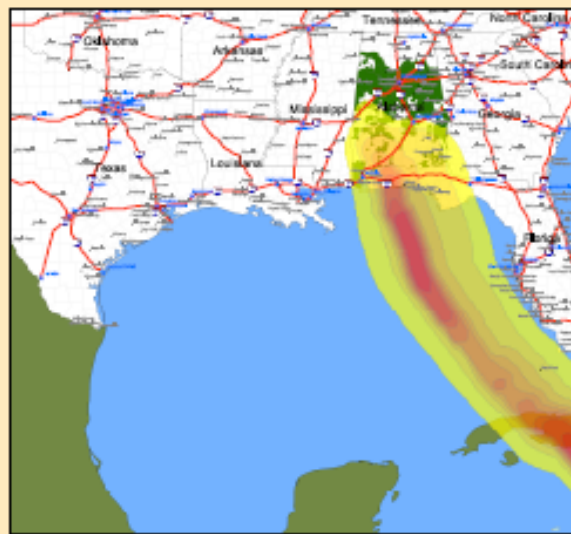
GEORGES
September 27th, 1998
148,596

Speed_MPH
40 60 70 80 90 100
Cities with Population under 100,000
Cities with Population over 100,000



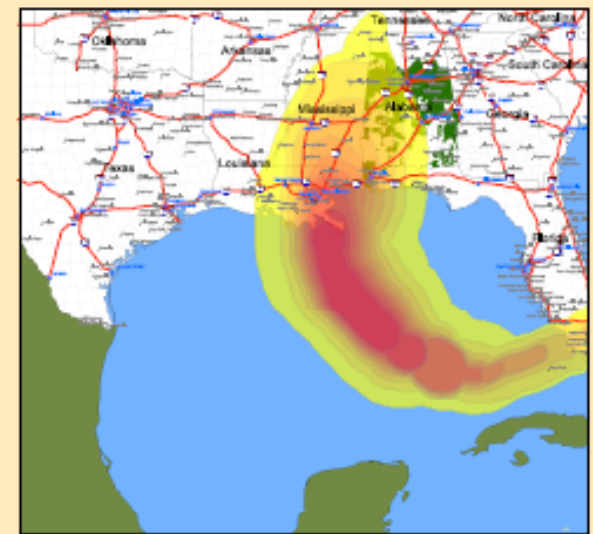
IVAN
September 16th, 2004
825,701

Speed_MPH
40 60 70 80 90 100
Cities with Population under 100,000
Cities with Population over 100,000



DENNIS
July 11th, 2005
241,214

Speed_MPH
40 60 70 80 90 100
Cities with Population under 100,000
Cities with Population over 100,000



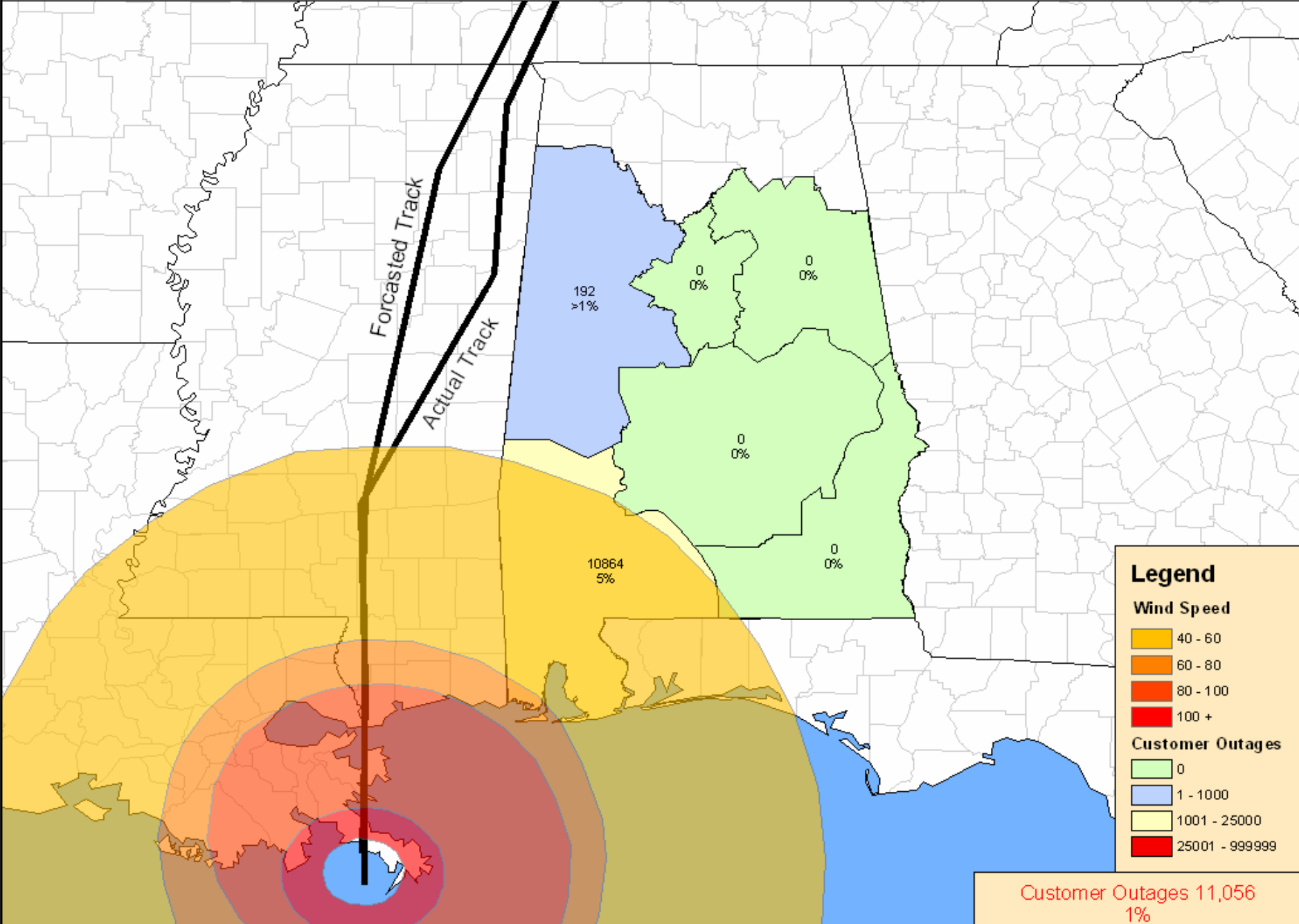
KATRINA
August 29th, 2005
636,891

Speed_MPH
40 60 70 80 90 100
Cities with Population under 100,000
Cities with Population over 100,000

0 250 500 750 1,000 Miles



Alabama Power Company is an Equal Opportunity Employer. All rights reserved. © 2005 Alabama Power Company. All other trademarks are the property of their respective owners.



Legend

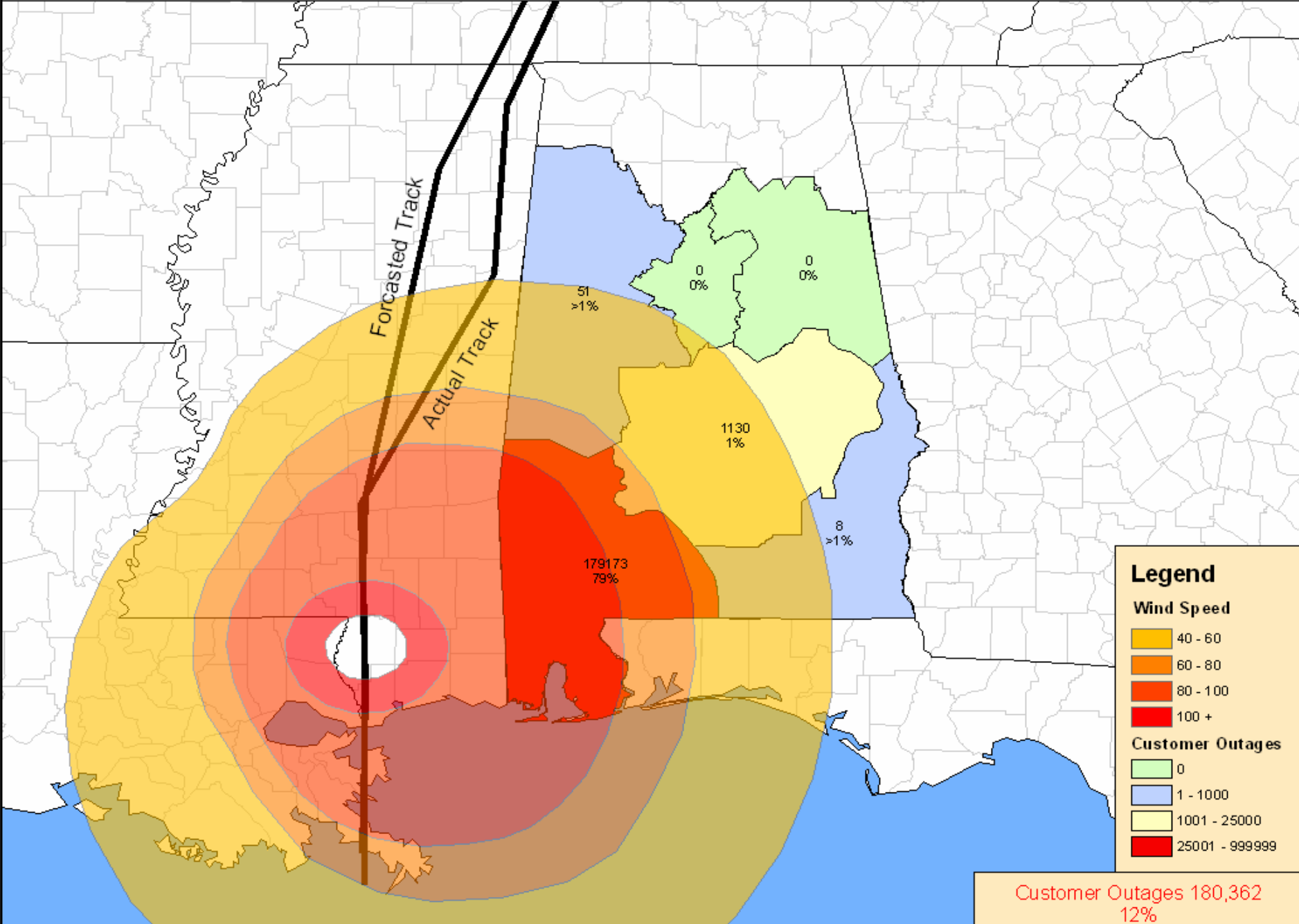
Wind Speed

- 40 - 60
- 60 - 80
- 80 - 100
- 100 +

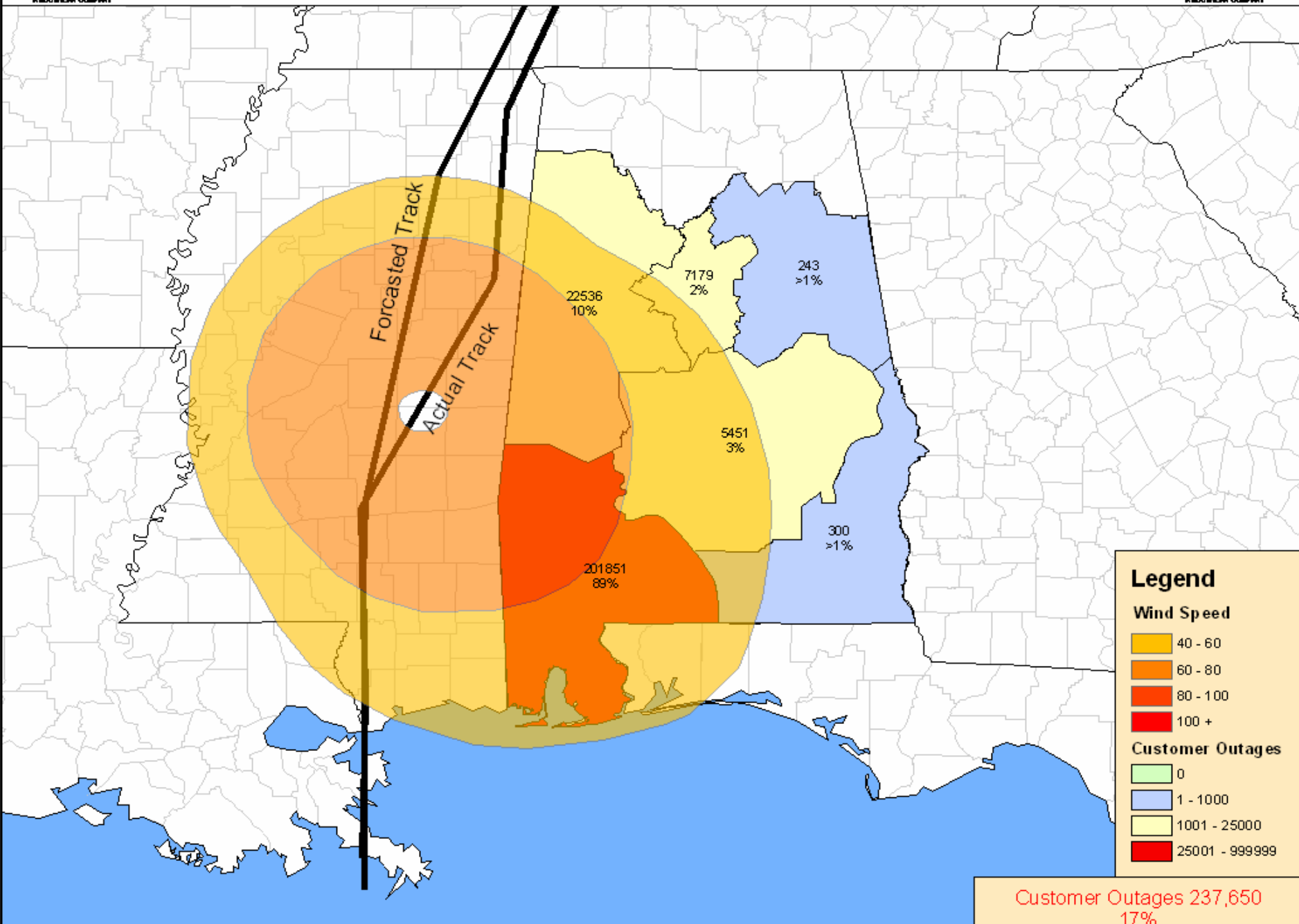
Customer Outages

- 0
- 1 - 1000
- 1001 - 25000
- 25001 - 999999

Customer Outages 11,056
1%



Customer Outages 180,362
12%



Legend

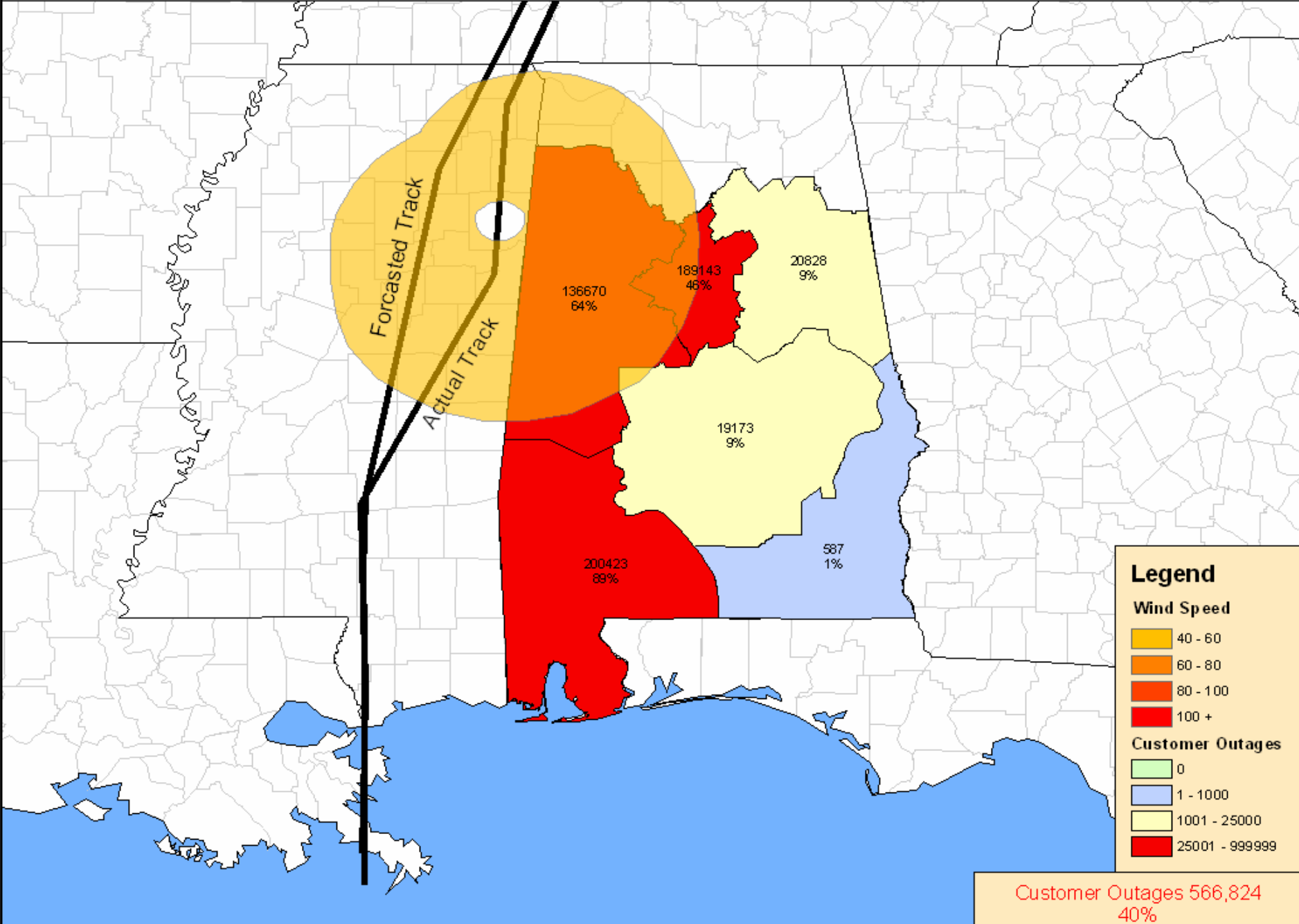
Wind Speed

- 40 - 60
- 60 - 80
- 80 - 100
- 100 +

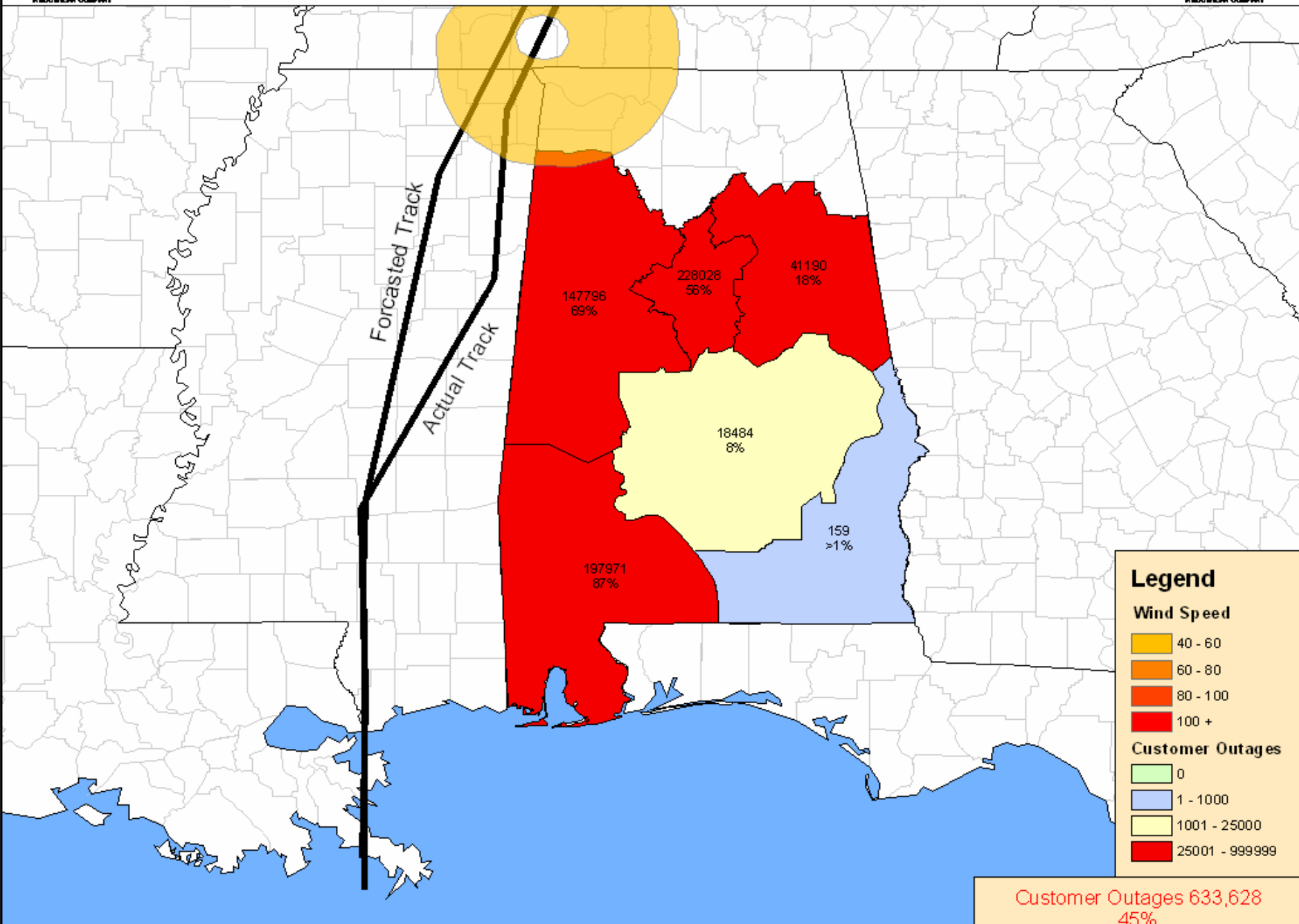
Customer Outages

- 0
- 1 - 1000
- 1001 - 25000
- 25001 - 999999

Customer Outages 237,650
17%



Customer Outages 566,824
40%



Legend

Wind Speed

- 40 - 60
- 60 - 80
- 80 - 100
- 100 +

Customer Outages

- 0
- 1 - 1000
- 1001 - 25000
- 25001 - 999999

Customer Outages 633,628
45%

DENNIS DAMAGE POTENTIAL

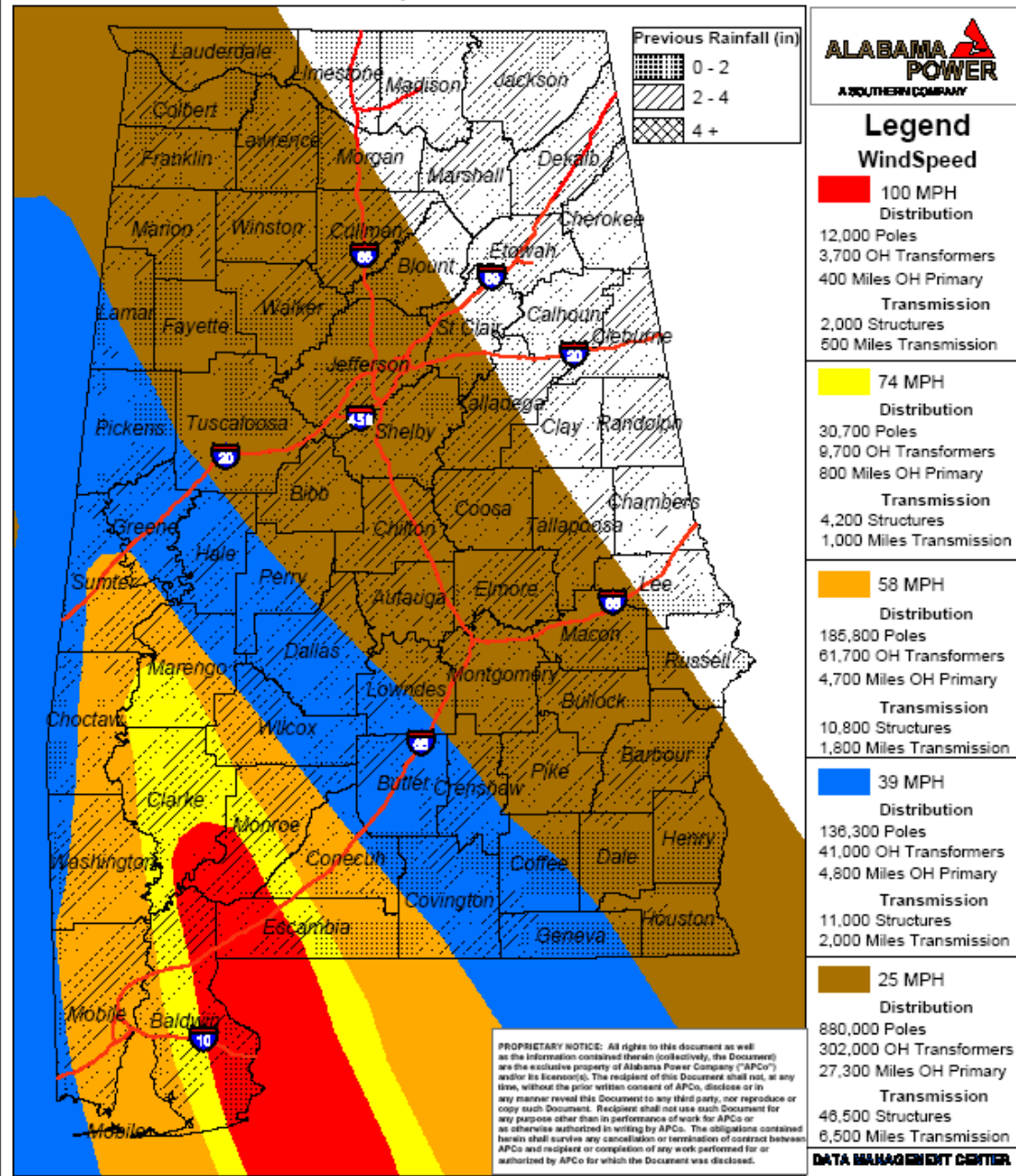
July 8, 2005 - 3:00 PM

Hurricane Dennis

Forecast Wind speeds two days prior to impact

This map shows wind bands ranged by speed with calculated major equipment within each polygon

Minimal impact to North/Central part of state



DENNIS DAMAGE POTENTIAL

July 9, 2005 - 12:00 PM

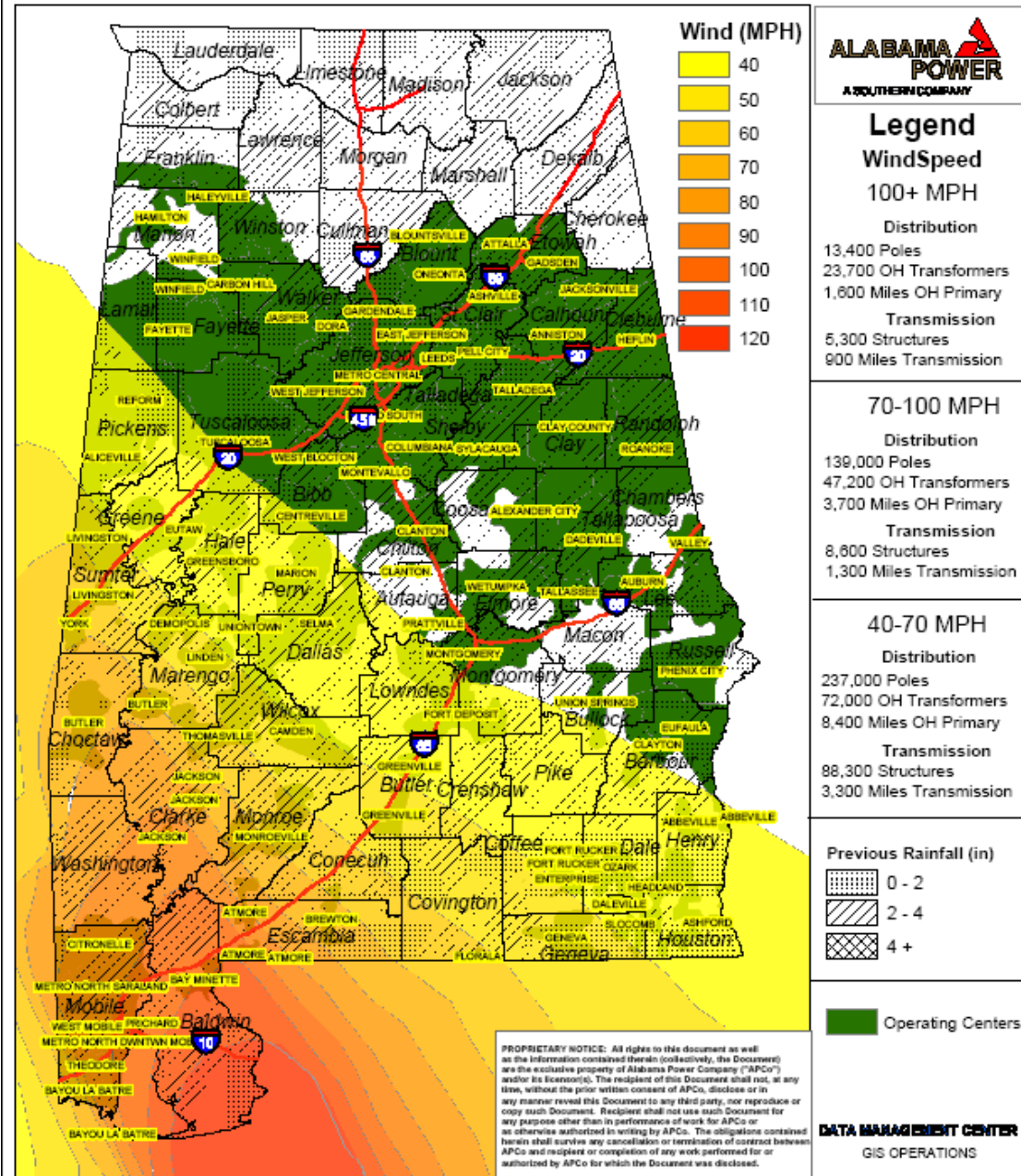
Hurricane Dennis

**Forecast Wind speeds
One day prior to impact**

Landfall has shifted west

**Wind speeds forecasted
lower**

**Penetration into state
reduced**



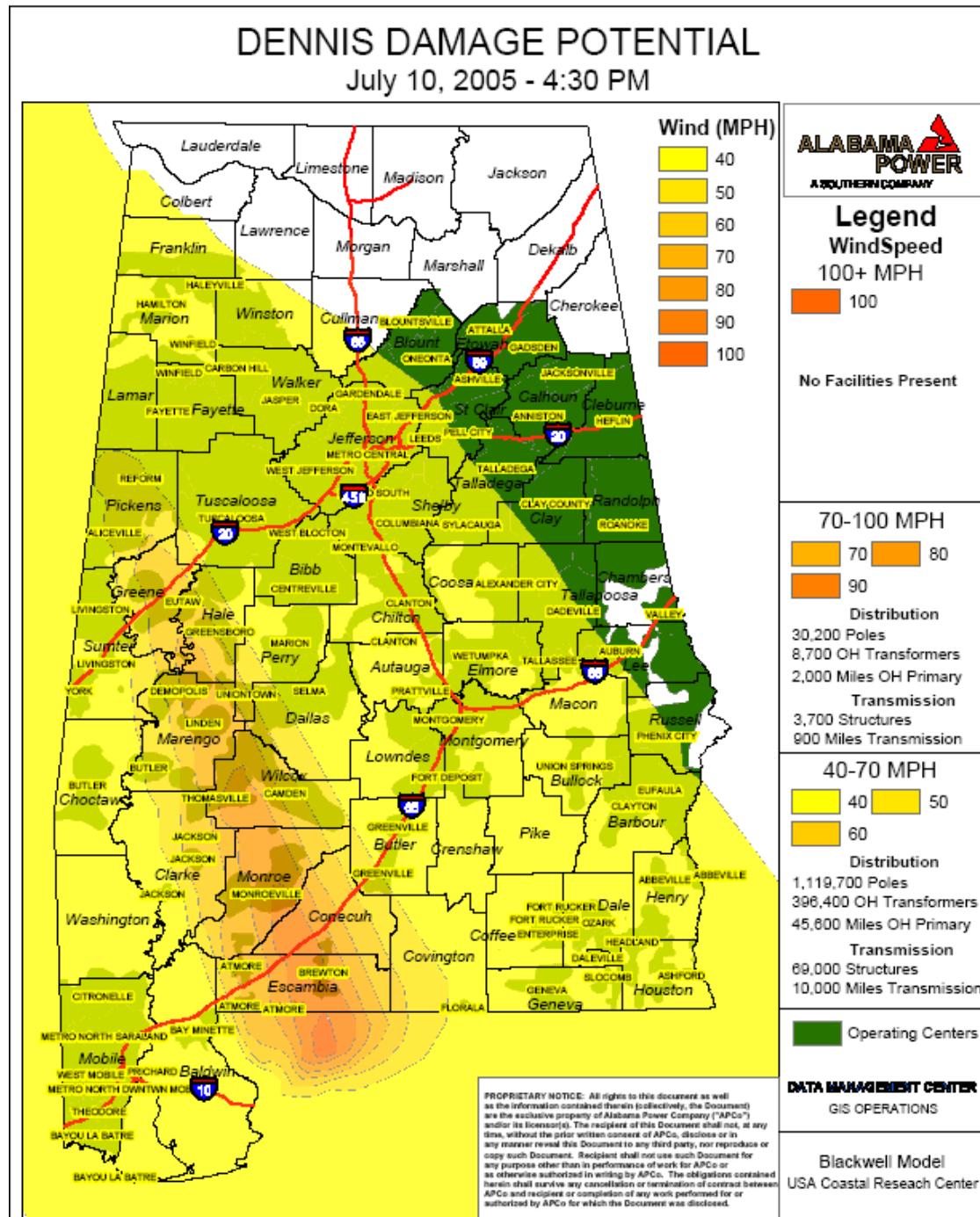
Hurricane Dennis

Actual and projected Wind speeds after landfall

Landfall has shifted east

Penetration into state increased with higher speeds

Resulting >200,000 outages



OUTAGE DENSITY SUMMARY OPERATION CENTER LEVEL

July 11, 2005 12:30AM

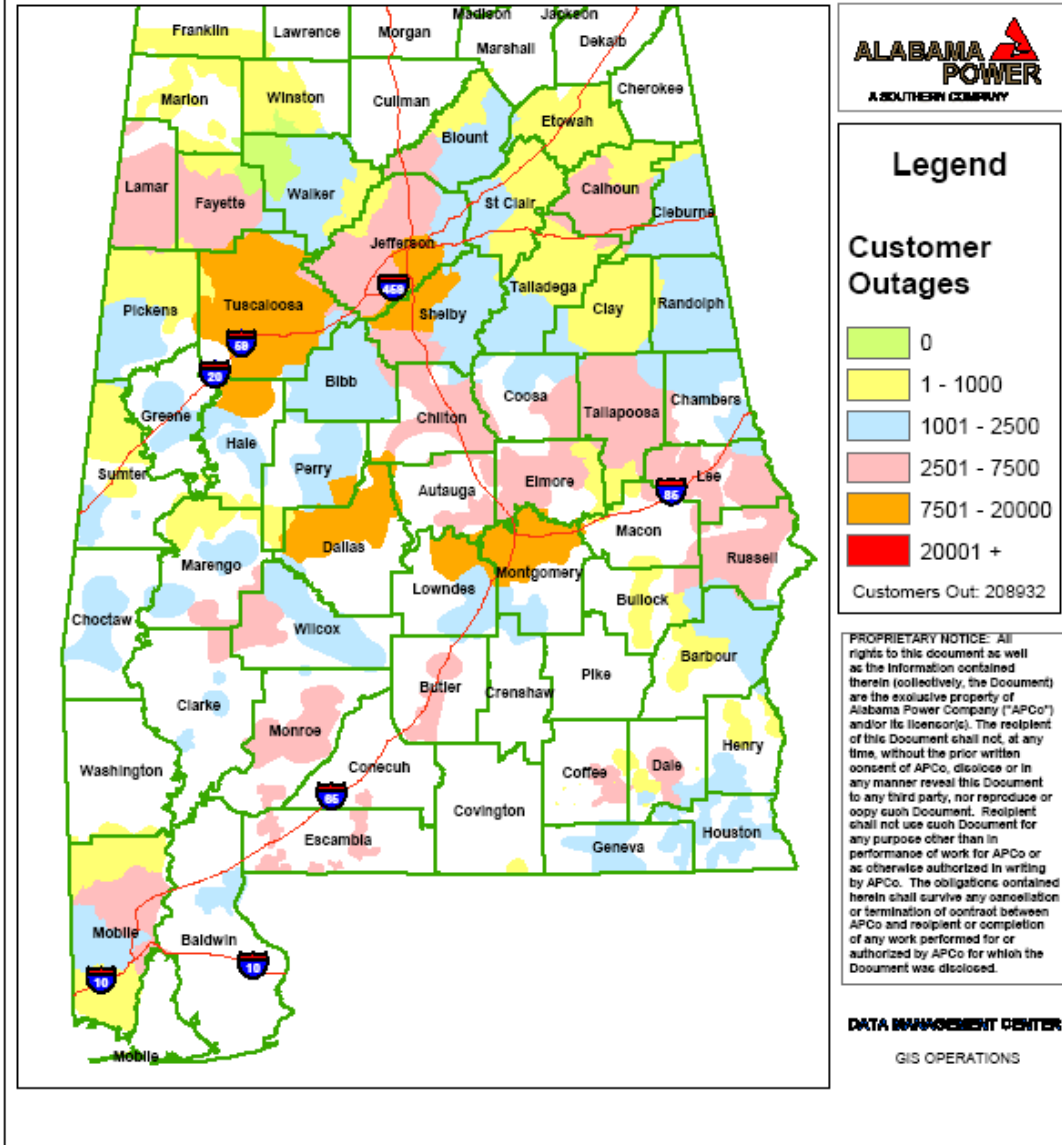
Hurricane Dennis

Actual and projected Wind speeds after landfall

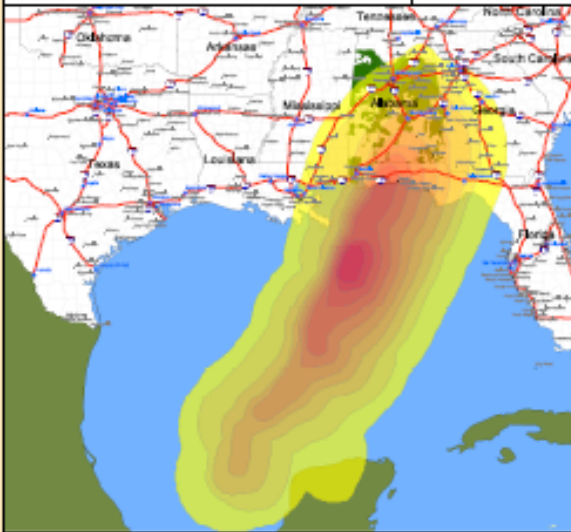
Landfall has shifted east

Penetration into state increased with higher speeds

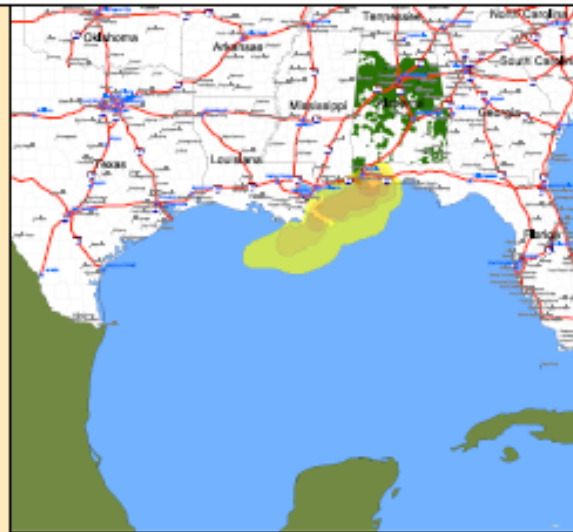
Resulting >200,000 outages



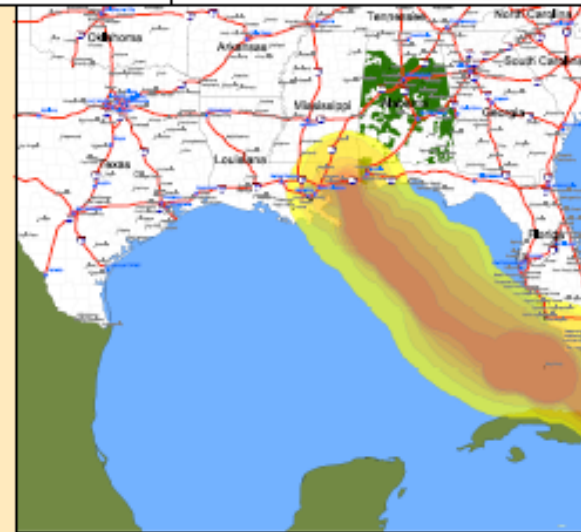
Alabama Power Hurricane Impact Analysis



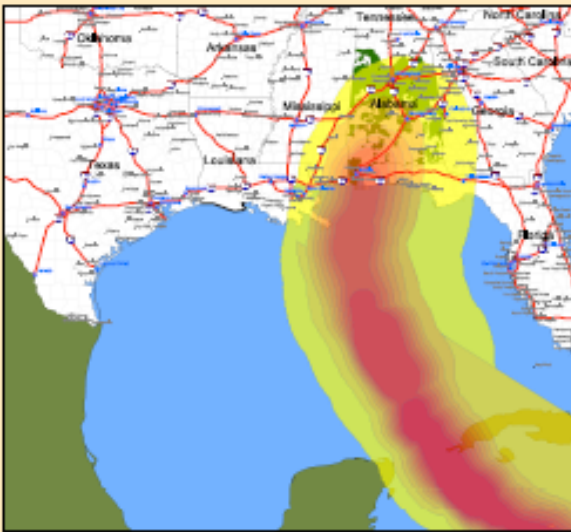
OPAL
October 4th, 1995
475,889



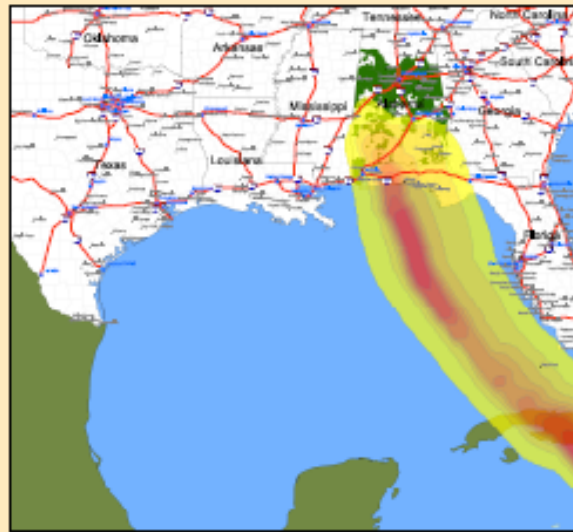
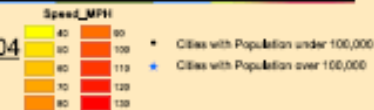
DANNY
July 19th, 1997
36,605



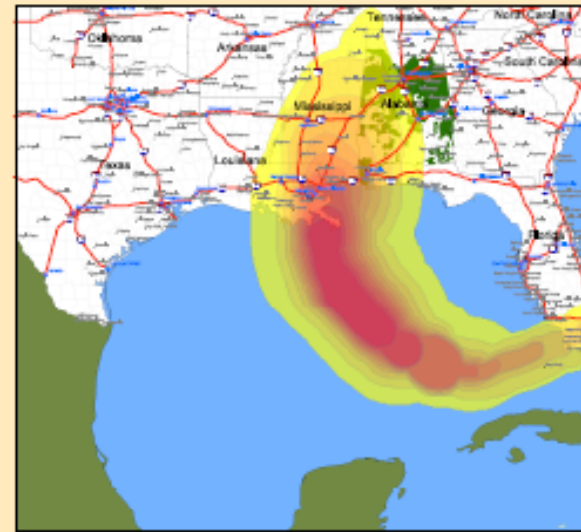
GEORGES
September 27th, 1998
148,596



IVAN
September 16th, 2004
825,701



DENNIS
July 11th, 2005
241,214



KATRINA
August 29th, 2005
636,891



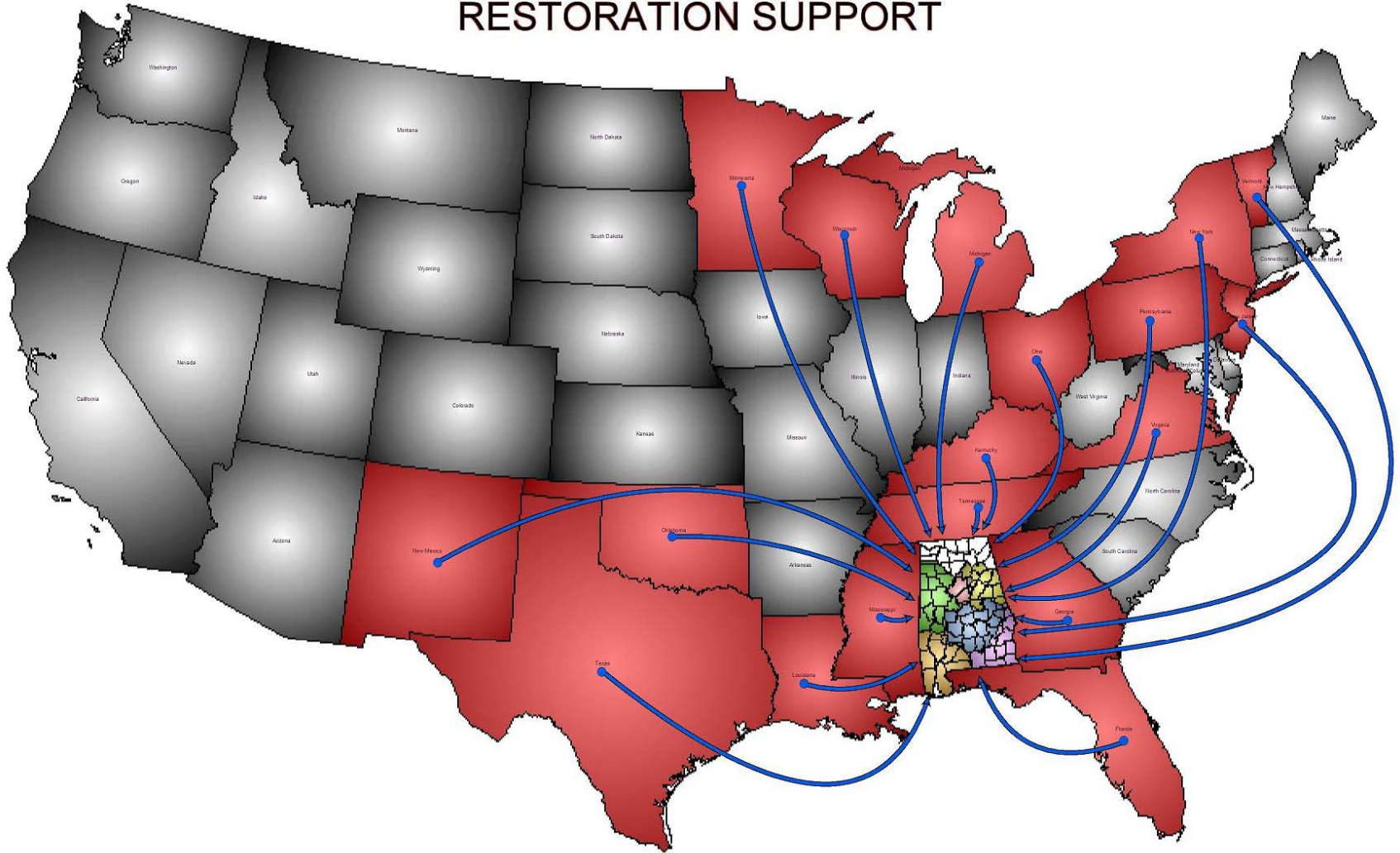
0 250 500 750 1,000 Miles



© 2005 Alabama Power Company. All rights reserved. This document is the property of Alabama Power Company and is not to be distributed outside of the company without the express written permission of the Data Management Center. The information contained herein is for informational purposes only and does not constitute an offer of insurance or any other financial product. For more information, please contact your agent or the Data Management Center at 1-800-835-8358.

North

HURRICANE IVAN RESTORATION SUPPORT



East

South



Description
 MDOT has cleared all state highways for travel except Hwy 90; however, the Highway Patrol is prohibiting non-emergency travel in SOUTHERN Mississippi from Columbia to the Alabama state line

US 90-92
 Eastern limits of Closure are CLOSED
 Western limits are open

AL 90
 Closed in Mobile

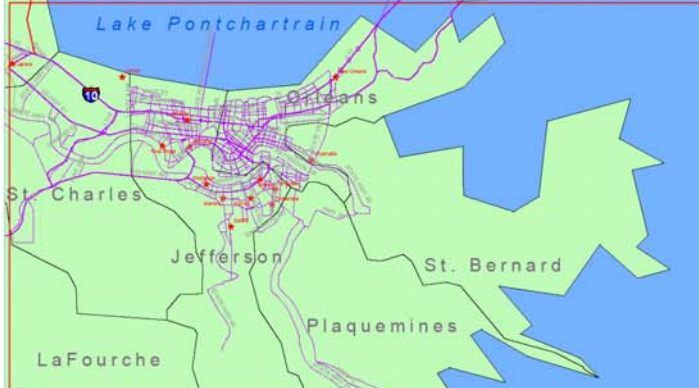
Road Conditions in Coastal Areas

Legend

- Open Interstates
- Open Major Roads
- Closed
- Advisory
- Congested

Sources
 Mississippi Department of Transportation
 Alabama Department of Transportation
 Louisiana State Police
 ©2005 Comanche Security

Last Updated : September 2, 3:00PM



All Roads in Greater New Orleans Area are Closed

Gulf of Mexico

MISSISSIPPI 
POWER

A SOUTHERN COMPANY

GULF 
POWER

A SOUTHERN COMPANY

SAVANNAH 
ELECTRIC

A SOUTHERN COMPANY

SOUTHERN 
COMPANY

Energy to Serve Your World[®]

ALABAMA 
POWER

A SOUTHERN COMPANY

GEORGIA 
POWER

A SOUTHERN COMPANY