

2013 Esri Europe, Middle East, and Africa User Conference

October 23-25, 2013 | Munich, Germany

Road Ahead – Desktop GIS

Stefan Balbo, David Watkins, Gerhard
Trichtl

ArcGIS Professional

A new Desktop Application for
Professionals

Vision

The next generation ArcGIS desktop application for GIS professionals who need a clean and comprehensive user experience which is incredibly fast and efficient, and that will increase productivity for integrated 2D and 3D workflows supporting visualization, data management, and spatial analysis.

Vision

- 64 Bit application

ArcGIS Ideas

Search Ideas



Login >



Post >

My ideas >

Workspaces >

Categories

Products

- 3049 ArcGIS Desktop
- 312 ArcGIS Desktop Extensions
- 92 ArcGIS Engine
- 235 ArcGIS Explorer
- 334 ArcGIS Online
- 3 ArcGIS Runtime
- 659 ArcGIS Server

Popular Ideas

Recent Ideas

Top All-Time

Comments

View by status

All



ArcGIS Desktop :



Promote



Demote

10860
Points



Request
Workspace

64 bit ArcGIS Desktop

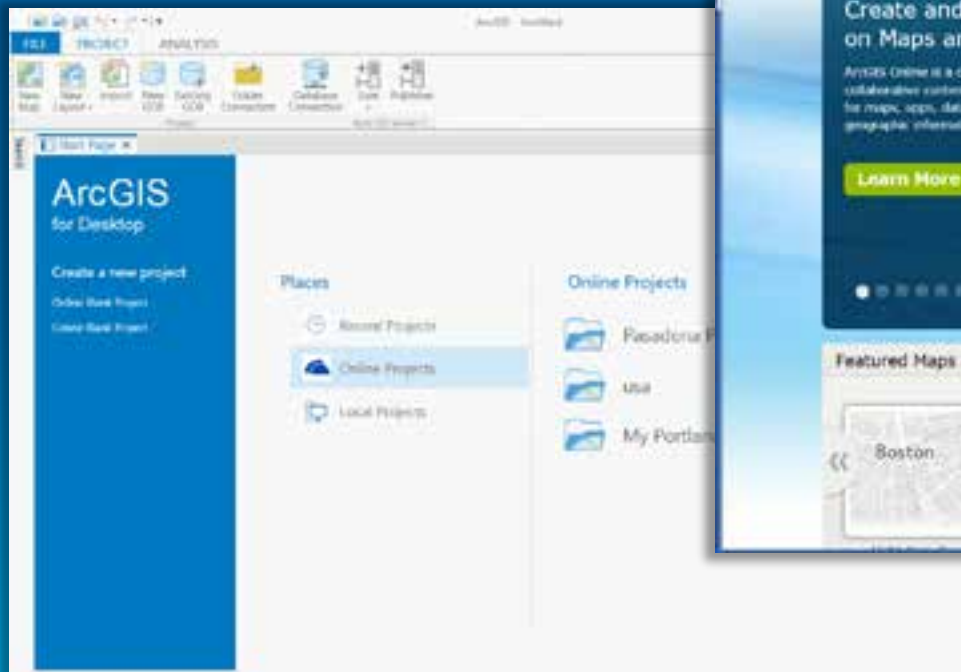
Give us a 64 bit ArcGIS Desktop. 32 bit is dead. Long live 64 bit.

Tags : ArcMap, 64-bit, 64 bit

44 Comments | Posted by : Riverside to ArcGIS Desktop Apr 7, 2010

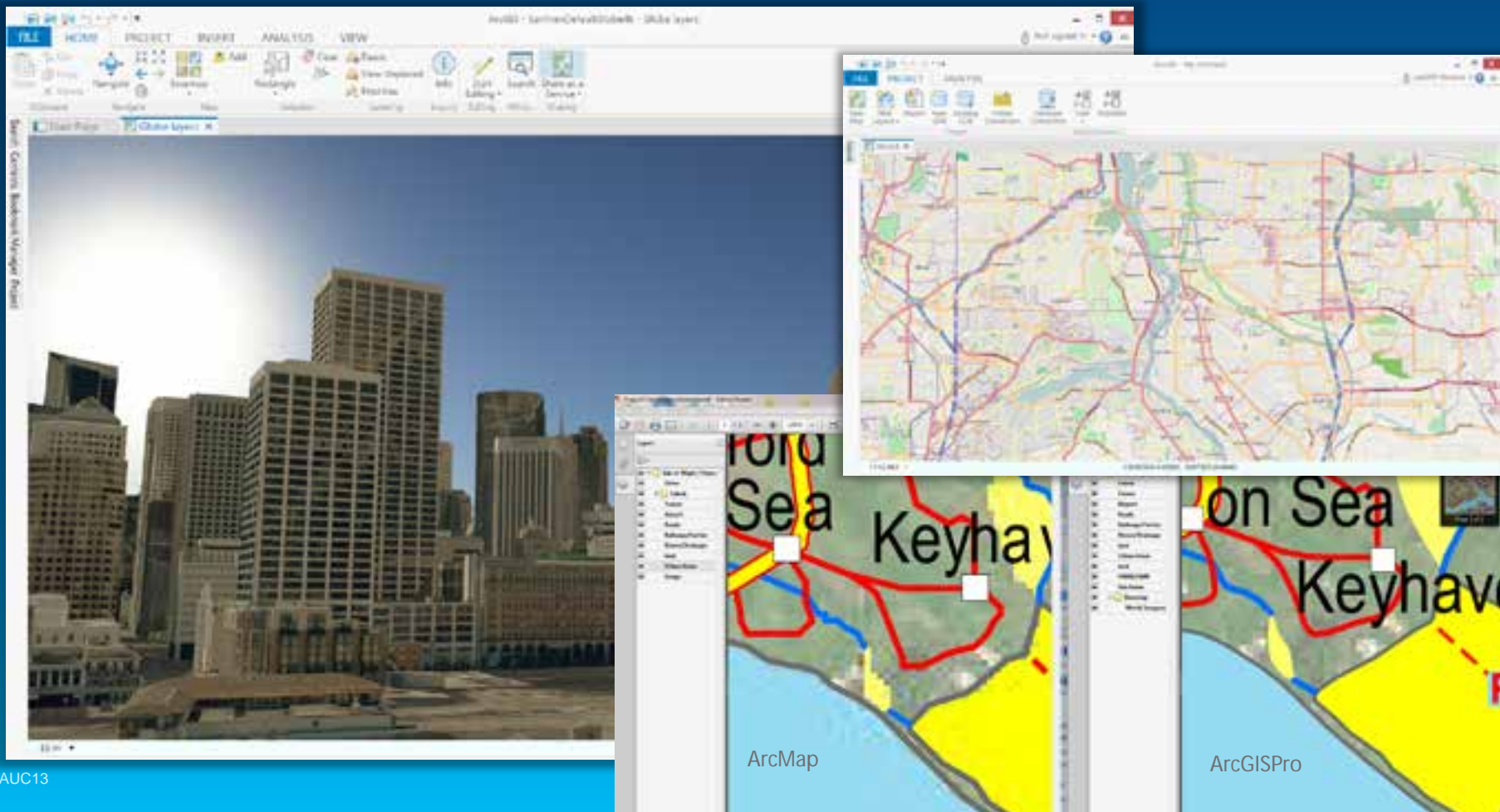
Vision

- Integration with ArcGIS Online



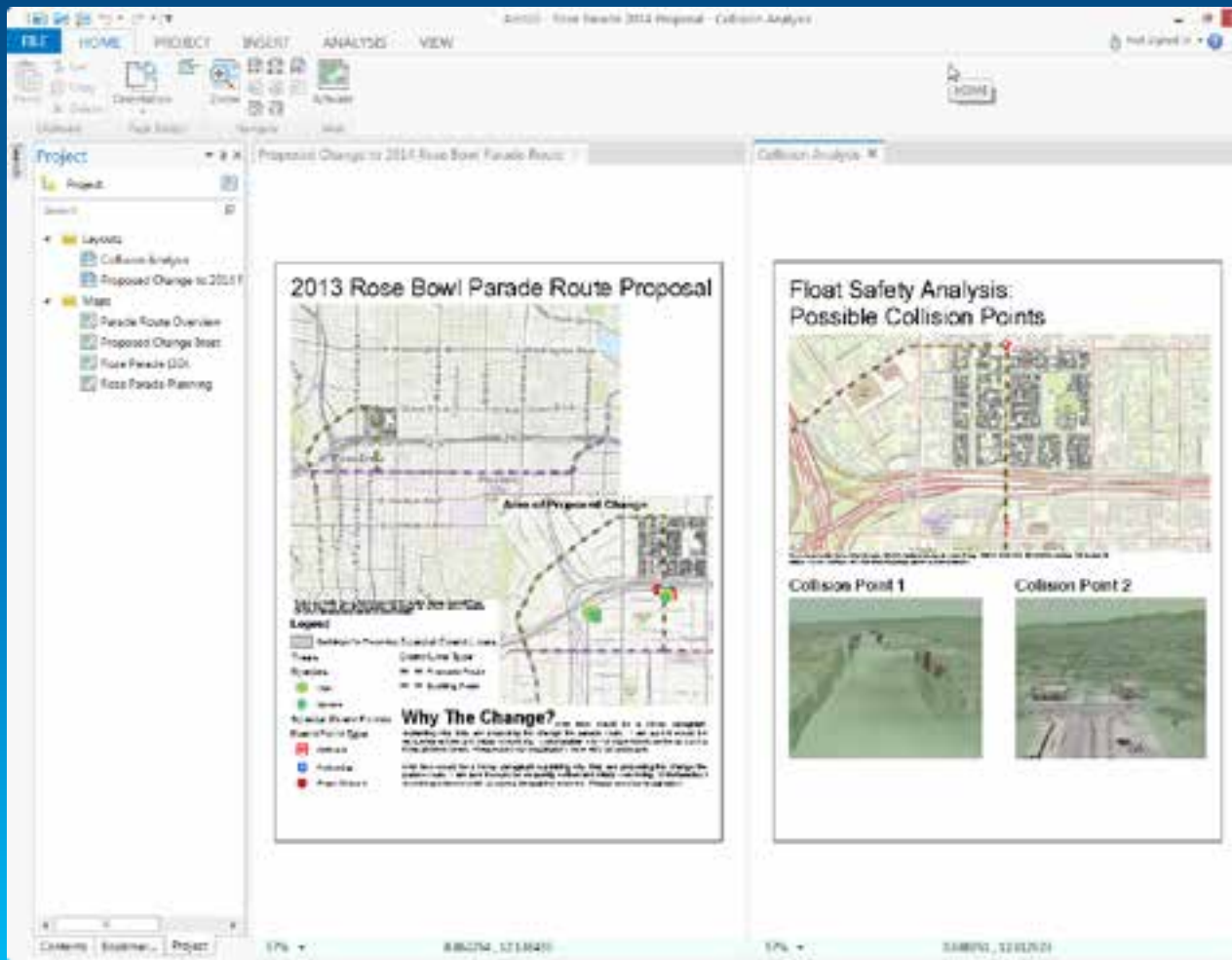
Vision

- New - *fast* - 3D/2D graphics engine and output



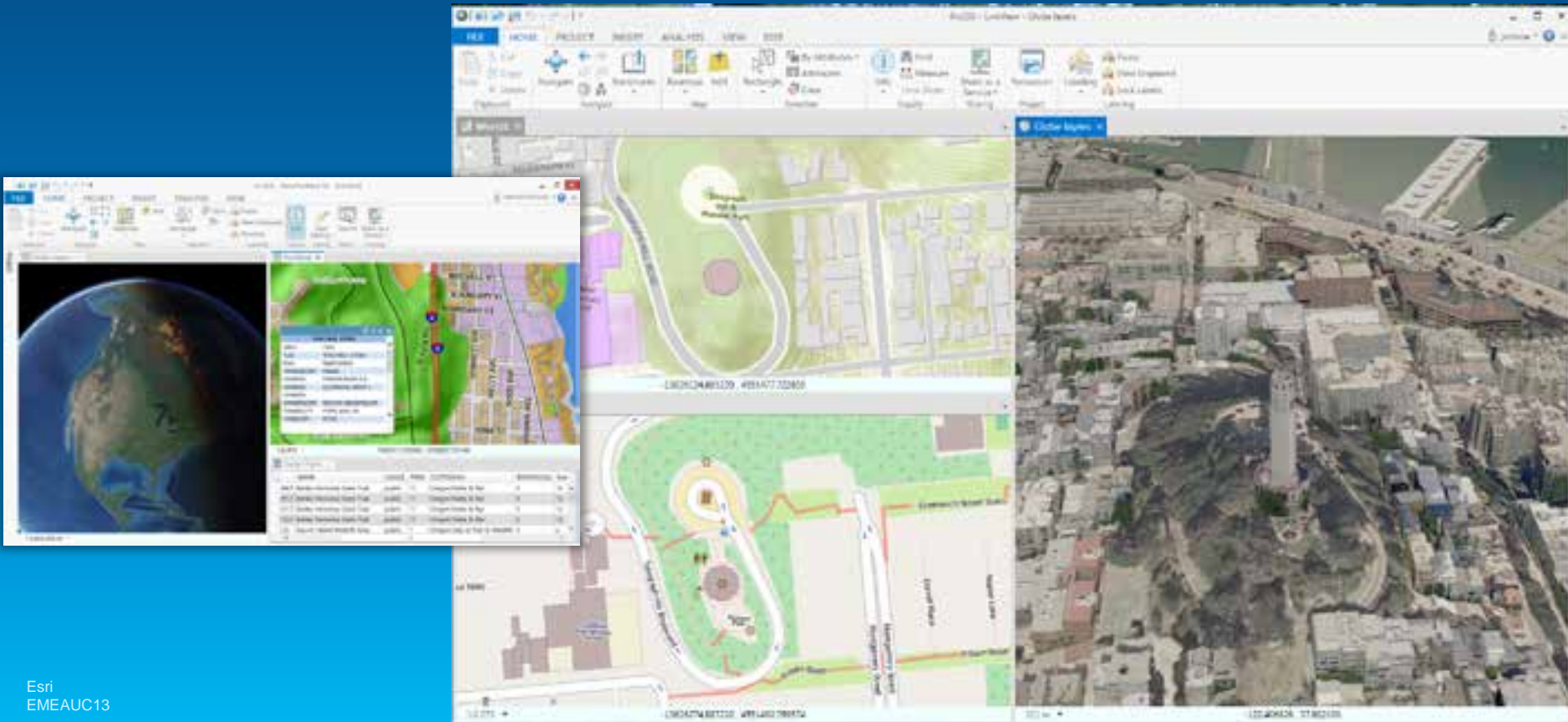
Vision

- Enhanced map layout capability



Vision

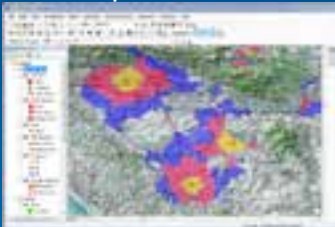
- Integrated 2D/3D experience
 - content creation, sharing and visualization



Vision

- Single, always responsive application

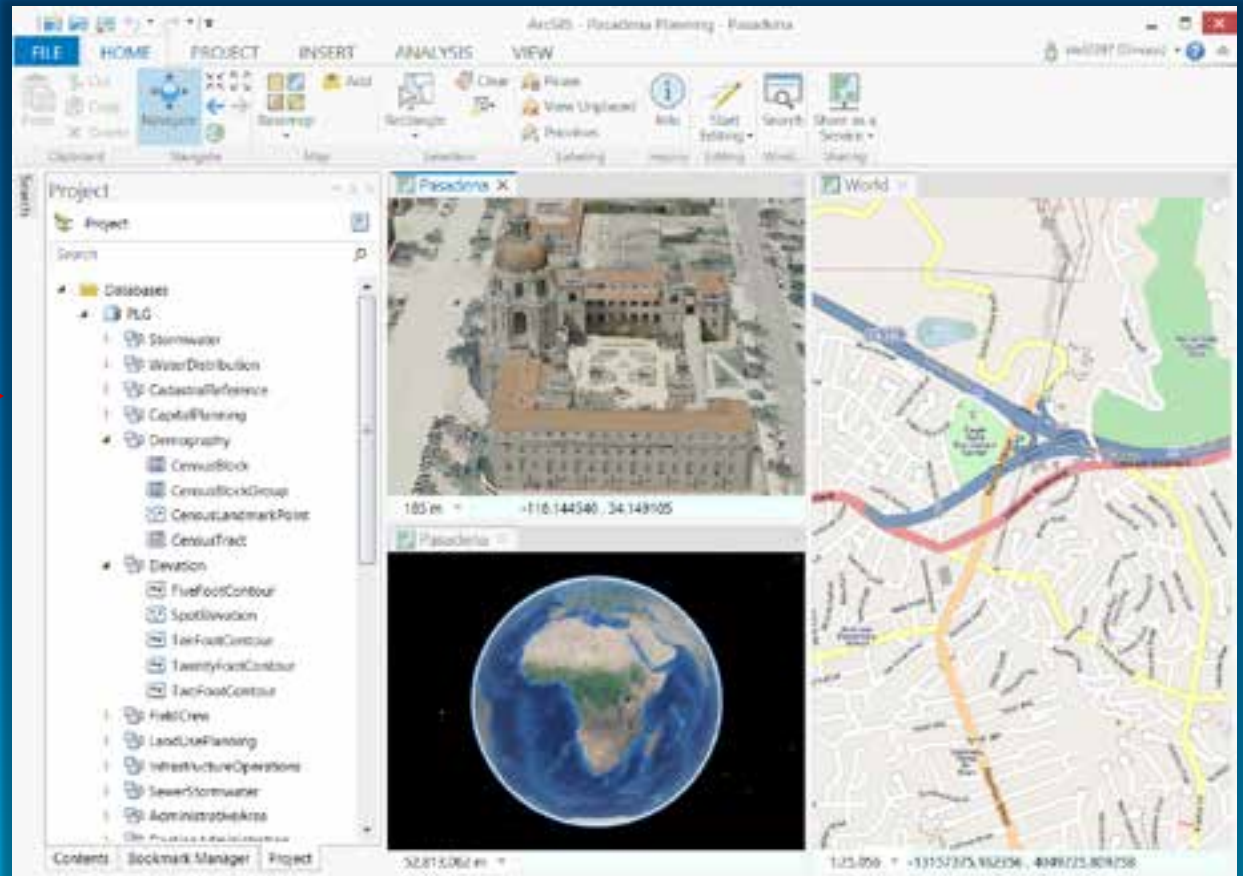
ArcMap



ArcCatalog

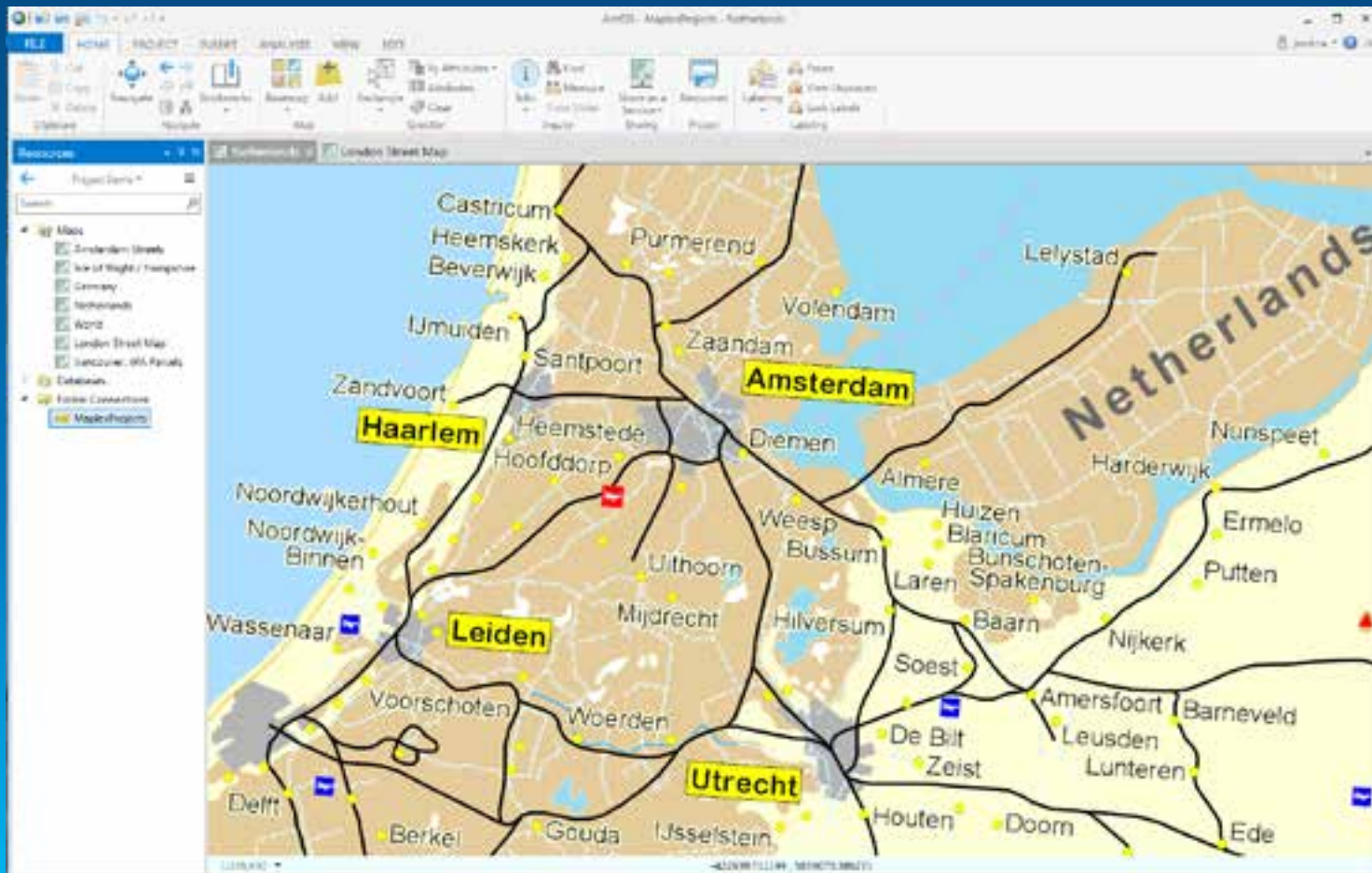


ArcGlobe / ArcScene



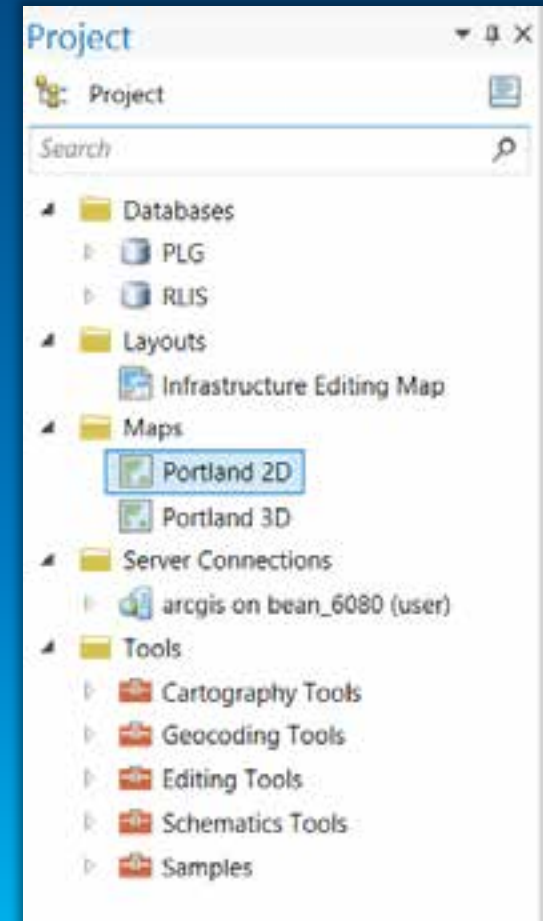
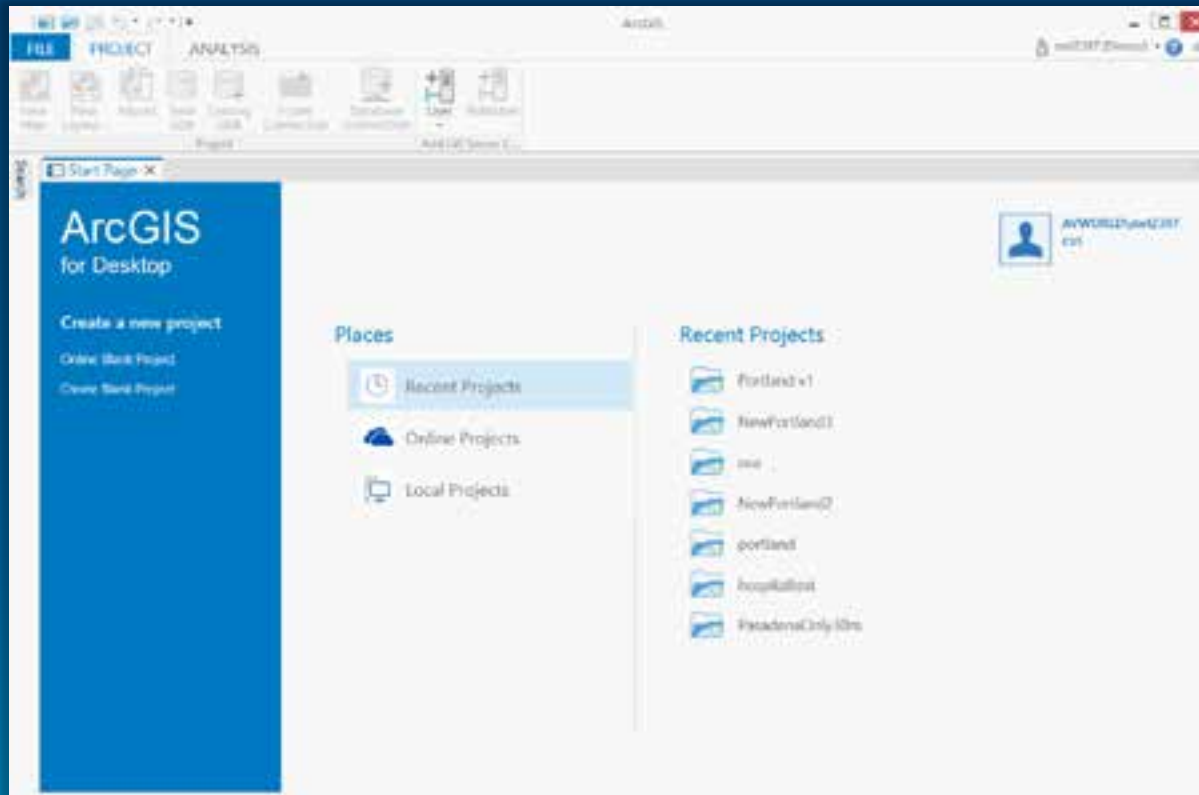
Vision

- Simplified contextual user interface



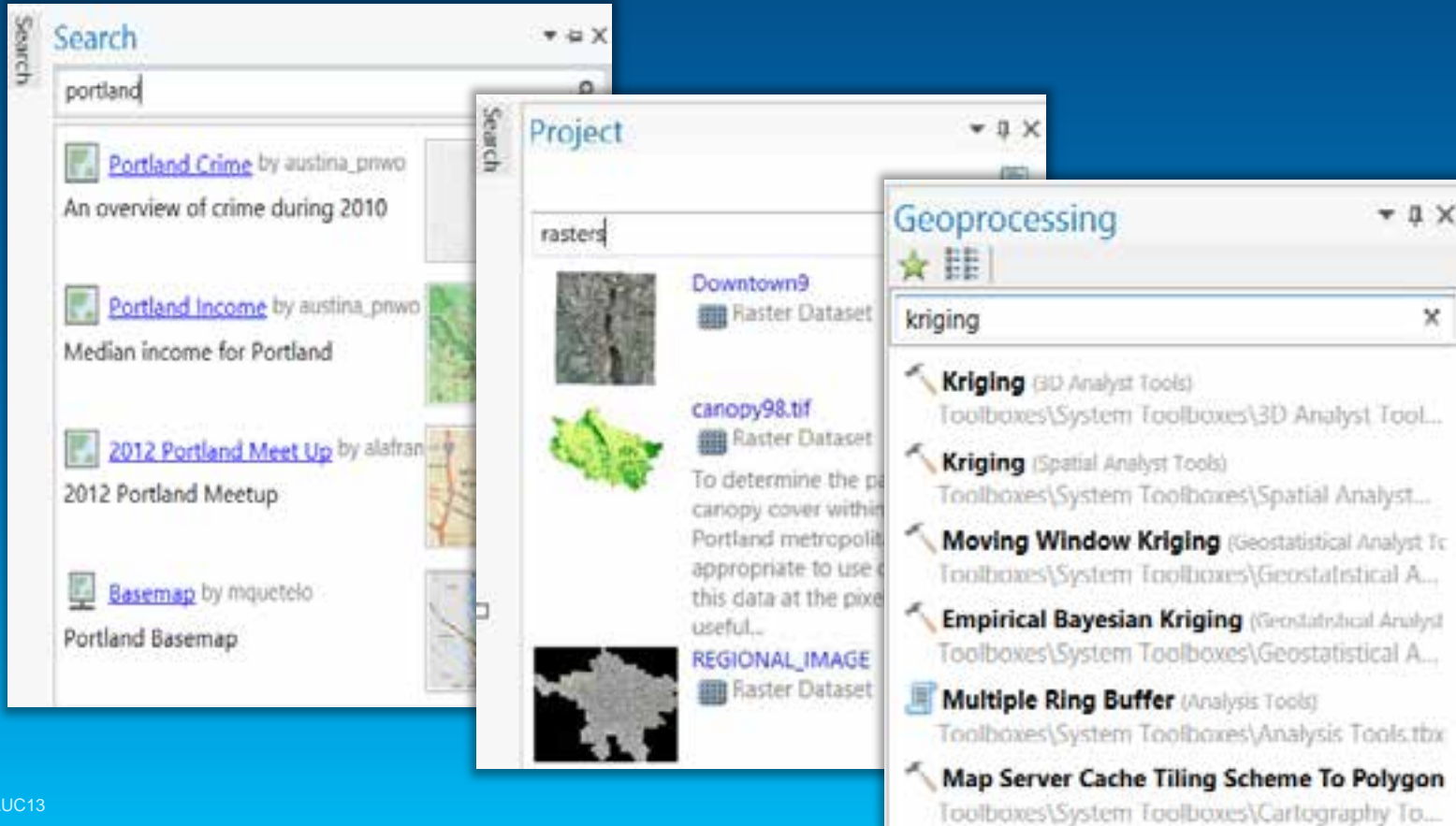
Vision

- Project centric workflows



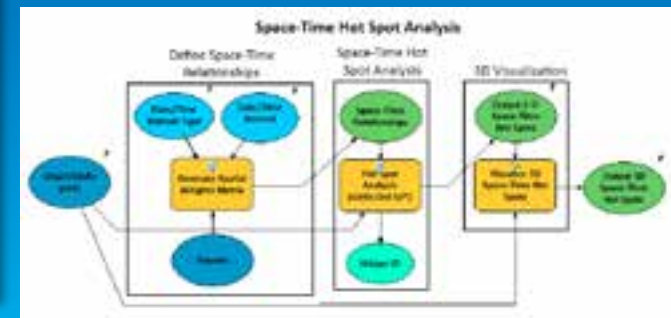
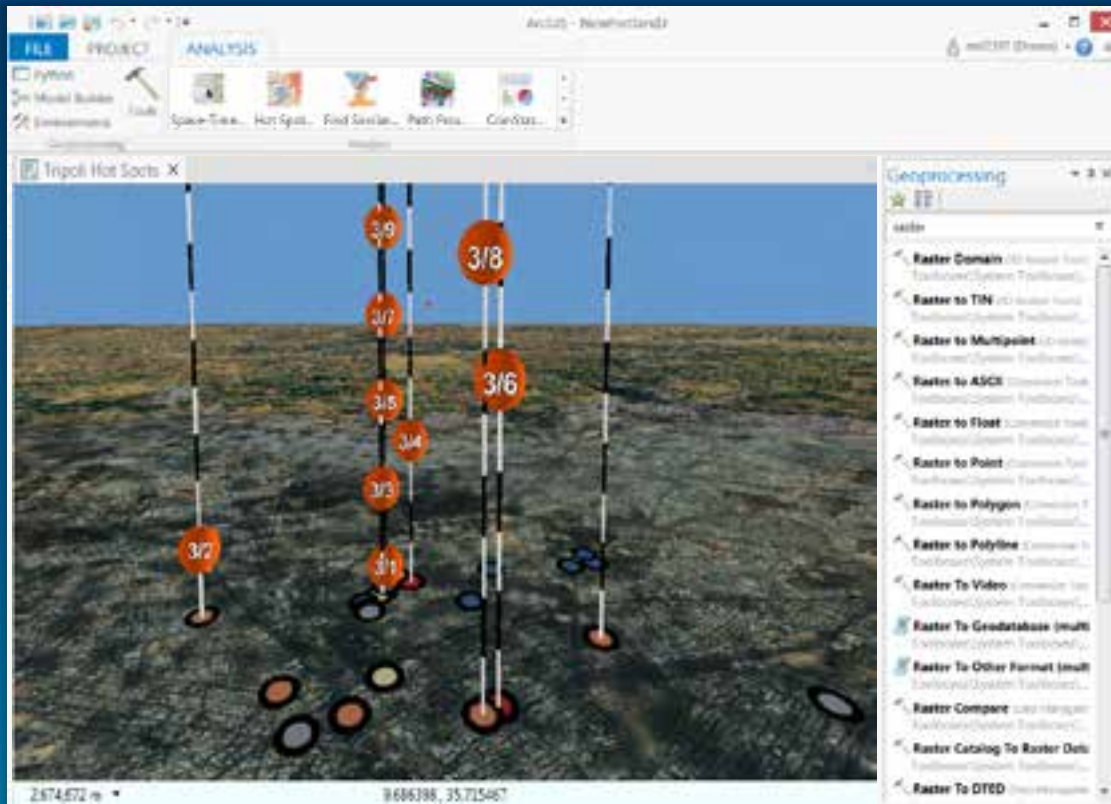
Vision

- Simple search and query – everywhere



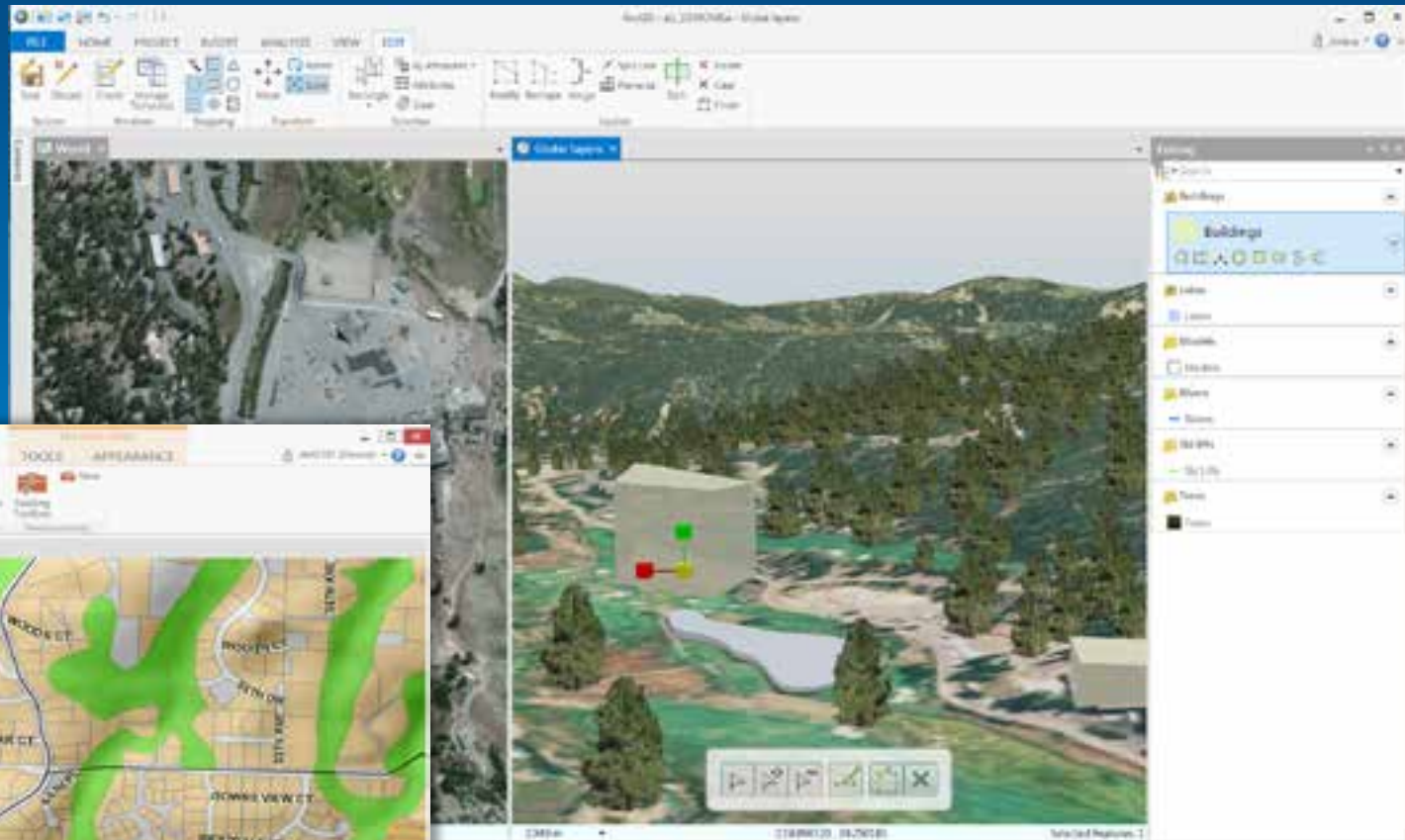
Vision

- Powerful analysis



Vision

- Geodata management 2D and 3D



Vision

- Simple data modeling

The screenshot displays the ArcGIS Desktop interface with the 'Fields' table for a 'Water Mains' feature class. The table contains the following data:

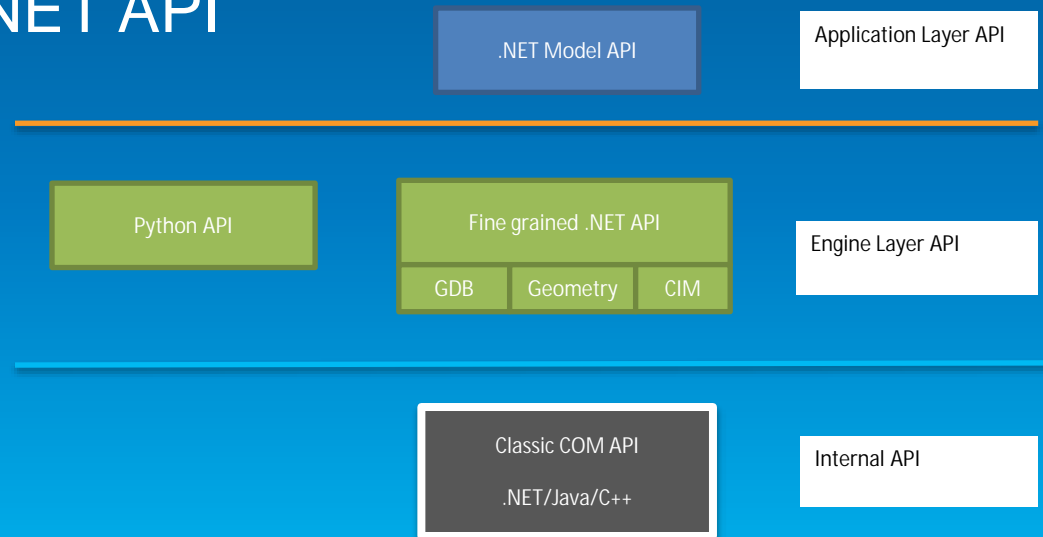
Field Name	Alias	Data Type	Allow NULLs	Domain	Default Value	Length	Precision	Scale
OBJECTID	OBJECTID	Object ID	No					
Shape	Shape	Geometry	Yes					
FACILITYID	Facility Identifier	Text	Yes			20		
INSTALLDATE	Install Date	Date	Yes					
MATERIAL	Material	Text	Yes	PipeMaterial	Polyvinyl Chloride	20		
DIAMETER	Diameter	Double	Yes	PipeDiameter	12"		0	0
WATERTYPE	Water Type	Text	Yes	WaterType	Potable Water	30		
TRANSMISS	Transmission System	Text	Yes	YesNo		5		
ENABLED	Enabled	Short	Yes	Enabled	1			
ACTIVEFLAG	Active Flag	Short	Yes	Boolean	1			
OWNEDBY	Owned By	Short	Yes	AssetOwner	1			
MAINTBY	Managed By	Short	Yes	AssetManager	1			
LASTUPDATE	Last Update Date	Date	Yes					
LASTEDITOR	Last Editor	Text	Yes			50		
Shape_Length	Shape_Length	Double	Yes				0	0

Vision

- Simple Web based installation and updates
- Simplified, subscription based Licensing
 - Managed by ArcGIS Online/Portal
 - Disconnected licenses are still available

Vision

- Simple extension models and developer API's
 - Python Scripting
 - Customizing using Add-Ins
 - Simplified .NET API



Release Plan

- DEC 2013
 - Tech Preview Release
 - start of early adaptor program
- MAR 2014
 - Public Beta Release
- UC 2014
 - First Release
 - triannual updates

Software Demonstrations