

**2013 Esri Europe, Middle East and Africa
User Conference**

October 23-25, 2013 | Munich, Germany

**Make room for more
communication**

Adrian Brezulianu, Daniela Iacob

- *Having to decide which telecom operator has the right to use one conduit and who doesn't can be quite a thorny issue, especially when you're a national Authority for Management and Regulation in Communications.*
- *Is there space for more cables? You should answer that. To do your best in this mediation process between sometimes ferocious telecom operators, you need the best geographic information system to support you licit decisions*

The Issue

Storing a large amount of heterogeneous information on telecom networks and infrastructure

AND

Mediating conflicts between network operators that use the same network infrastructure



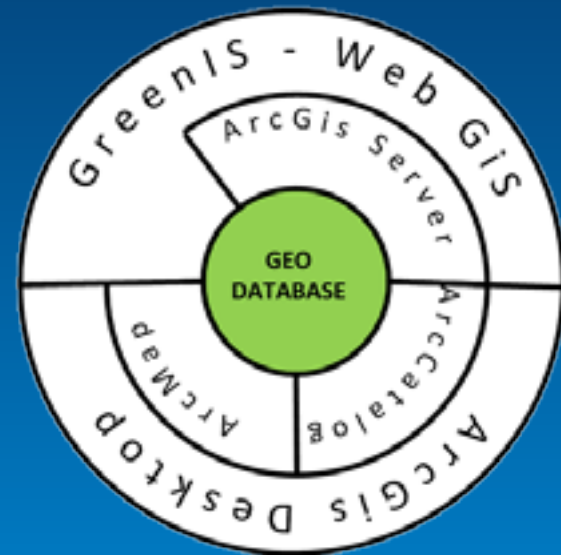
The Client

The National Authority for Management and Regulation in Communications of Romania

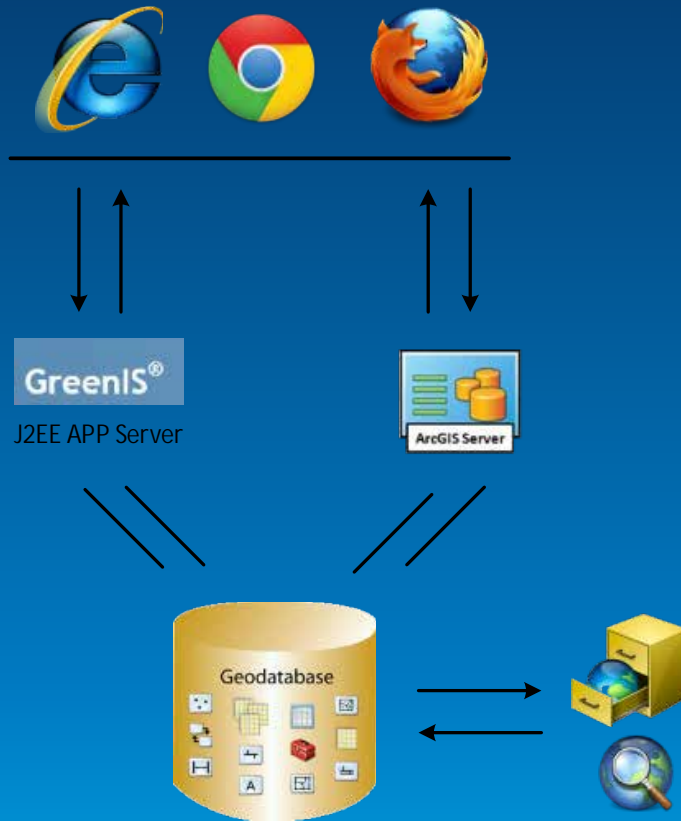


The solution

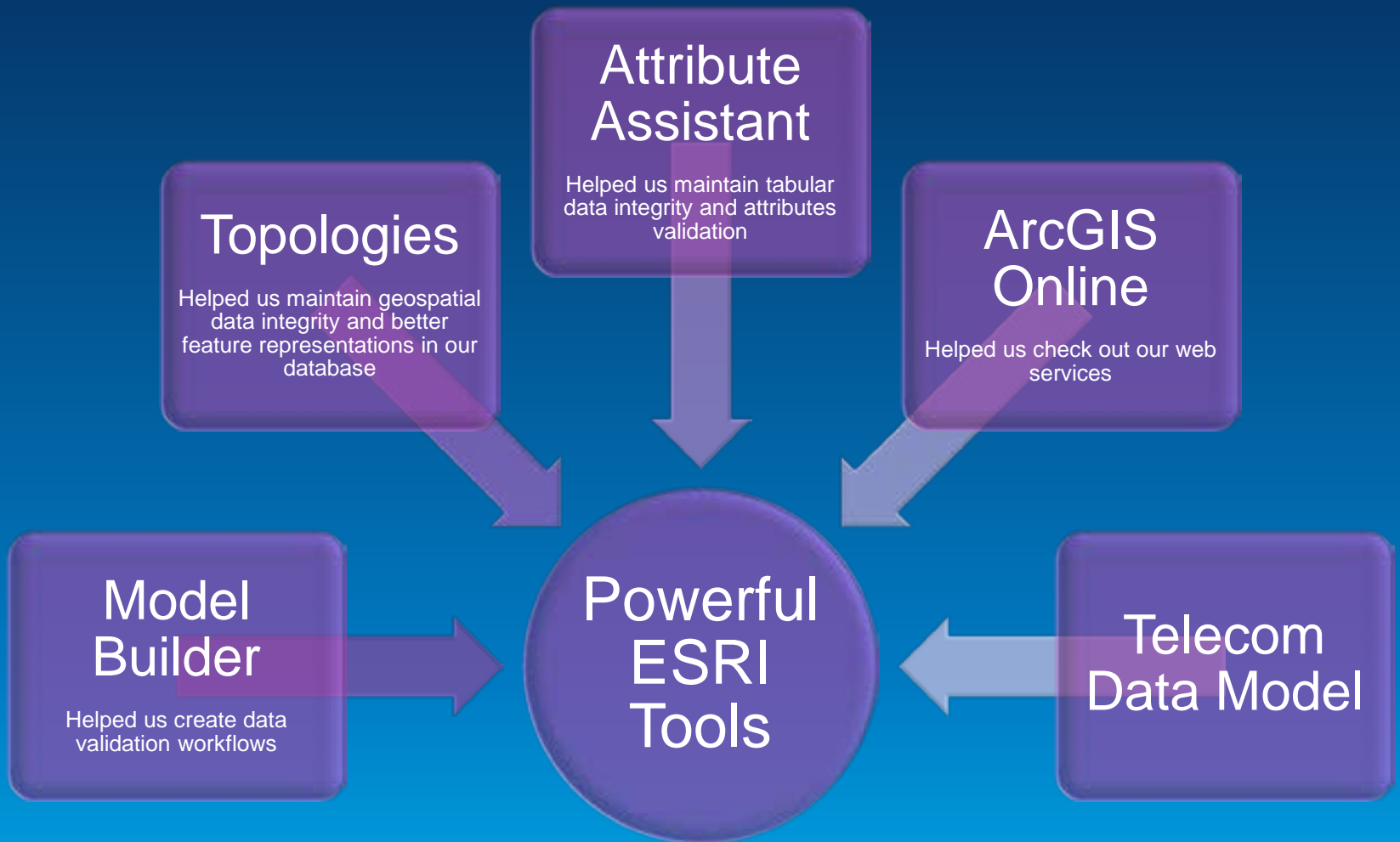
- **A multi-component complex geographical information system**, with both Web and Desktop interfaces designed for advanced data processing, geospatial analysis, centralized data storage and data exchange in a user-friendly environment adapted to the telecommunication industry



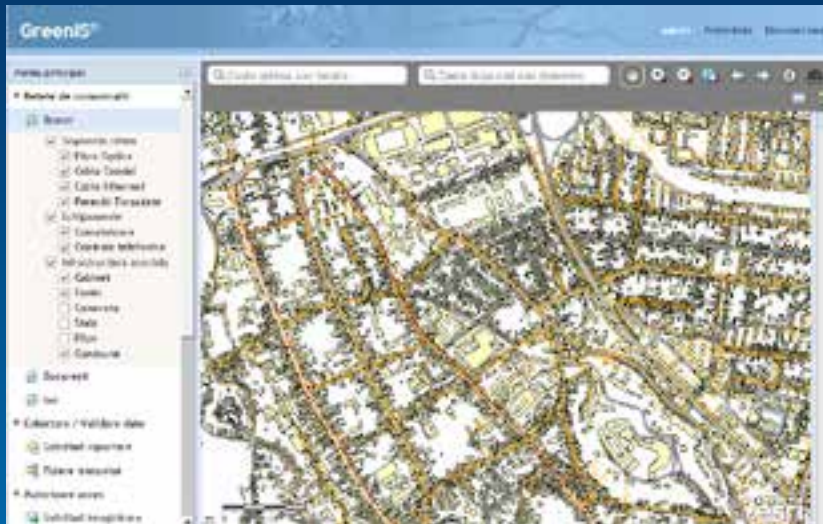
System architecture



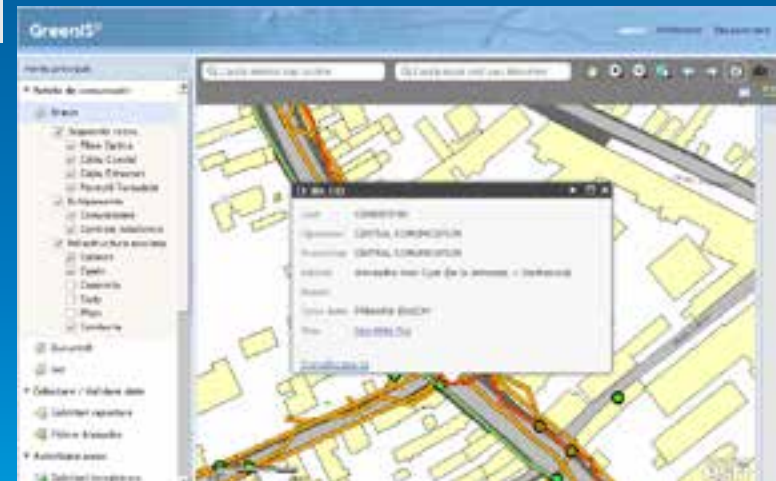
1. Web Browser
2. Web-GIS Application: GreenIS
3. GIS Server : ArcGIS Server 10.1
4. J3EE Application Server.
5. Spatial Geodatabase: PostgreSQL
6. ArcGIS Desktop



GreenIS: the WEB-GIS application



Information organized by layers and groups of layers.



Identify tool → visualize detailed information in a pop-up window with only a click.



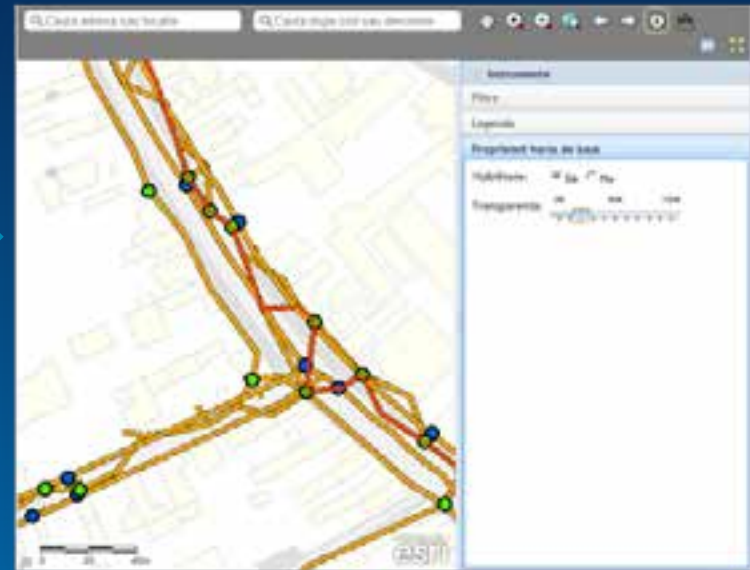
Variety of filters + option to create and save custom filters → information is easily accessible



Interactive map legend



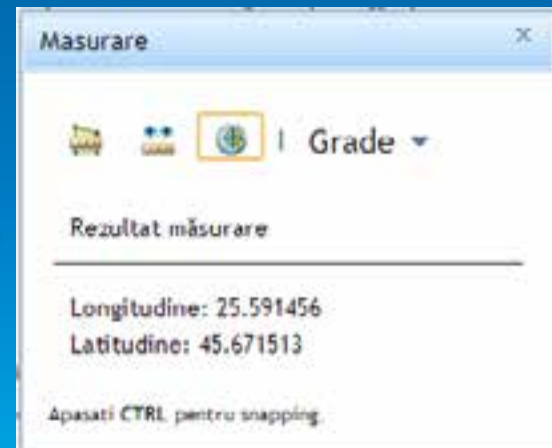
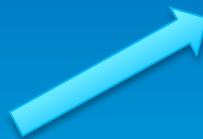
Users select a basemap from the ESRI-offered gallery



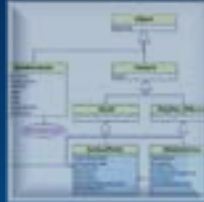
Then they select the basemap transparency



ESRI-supported web-tools



Bottlenecks we encountered



Finding the most 'functional' database design

Displaying dozen of conducts sharing the same location



Managing millions of cables

Handling data in various formats and different Coordinate Systems



Designing a performant workflow

Customer requests

Our experience with the customer revealed that there are several things when talking about requirements:

- **Trainings.** Most people are not that familiar to GIS, so it is important to offer them detailed information on how to use the products one offers.
- **Restricted acces.** Acces to database servers, GIS server, web-application's functionalities, web application's layers is configurable at a user's level.
- **Security.** Many clients have information that is highly confidential thus securing that information and limiting its access within the company is very important.
- **A Data Template** for telecom operators to use when they send their data. This way data is received in a standard format and input data processing is easier



System Advantages

- The application can be customized to the end-user needs and requirements for a wide range of utilities, not just telecommunications.
- The GreenIS web-GIS application is a more user-friendly environment for the client. Complex GIS Desktop can seem a little overwhelming.
- Acces to information can be restricted to each layer, to each user and to each process

Actualizare utilizator

Informații utilizator

Login: admin
Nume: admin
Prezintă: admin
E-mail: admin@hert.com
Ref: Extern Intern

Opțiuni parolă

Fără modificare Modificare Generare

Confirmați parola e-mail

Drepturi acces

- Acces harta rețea
- Acces segmente rețea
 - Acces fibră optică
 - Acces cablu coaxial
 - Acces cablu Ethernet
 - Acces percheți înșirate
- Acces echipamente
 - Acces consutor
 - Acces centrale telefonice
- Acces infrastructură asociată
 - Acces casin
 - Acces camereta
 - Acces staff
 - Acces pilon
 - Acces conducte
- Acces gestionare date
 - Acces date transmise
- Autorizare acces
 - Acces solicitări înregistrare
 - Acces utilizator
 - Acces operator
 - Acces sonenclatoare



Results

- The application is currently used for more than 10 major infrastructure operators and telecommunication networks.
- Our client can easily mediate conflict situations between operators sharing the same infrastructure.
- All information is centralized, easily-accessible without having to go on the field.

Our Conclusion

Developing a GIS dedicated to telecom industry can be difficult but it gets easier using ESRI tools.

Thank you!

