

**2013 Esri Europe, Middle East,
and Africa User Conference**

October 23-25 | Munich, Germany



Portal for ArcGIS - Eine Einführung

Dr. Gerd van de Sand
Dr. Markus Hoffmann



Einsatz Portal for ArcGIS

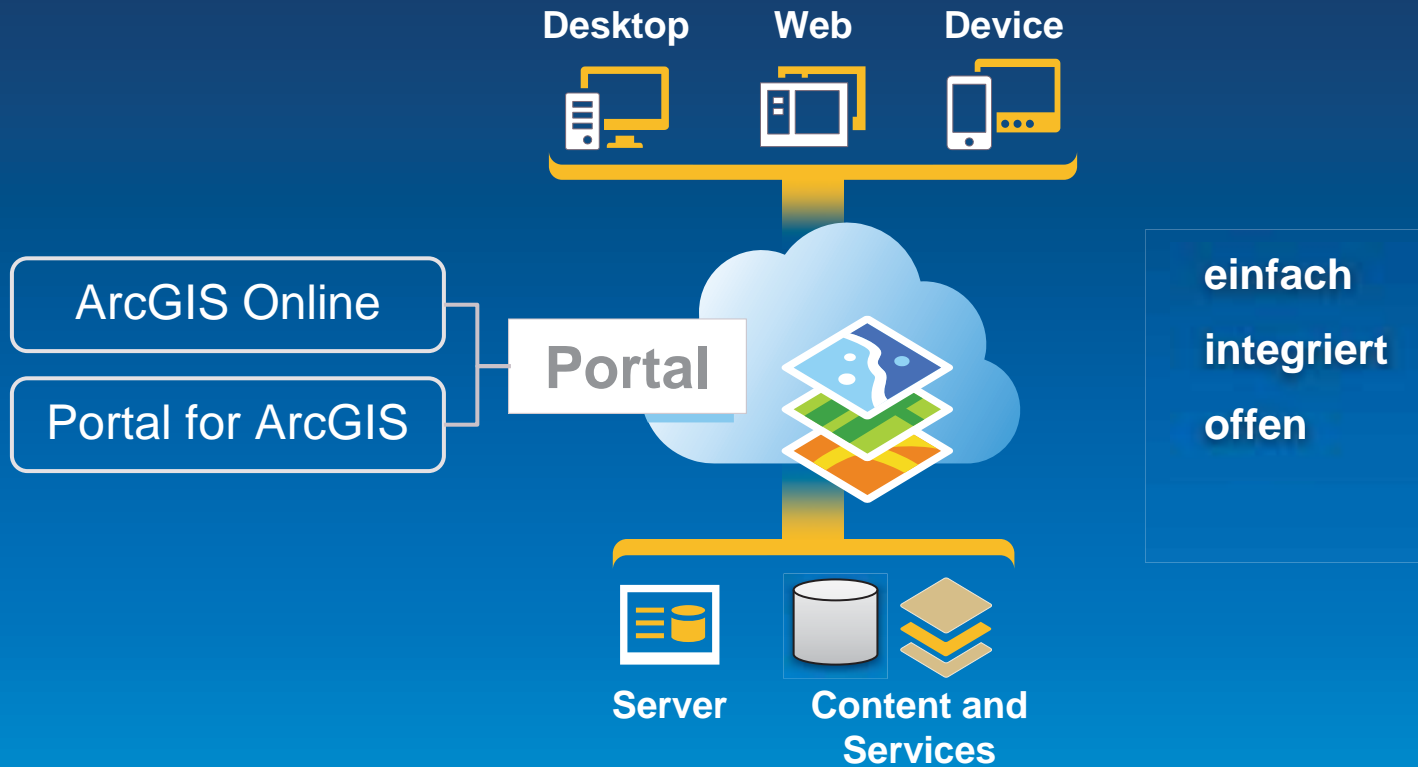
Agenda

- **ArcGIS Plattform**
 - > Portal & WebGIS
 - > Deployment patterns
- **Portal for ArcGIS**
 - > Architektur
 - > Installation
 - > ArcGIS for Server Integration
 - > Identity Provider
- **Lizenzierung**
- **Implementierung**

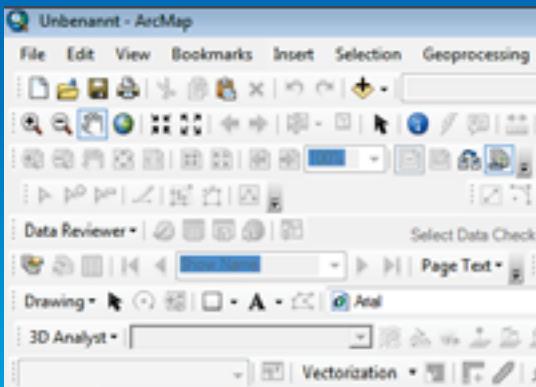
ArcGIS Plattform



ArcGIS ist eine Plattform



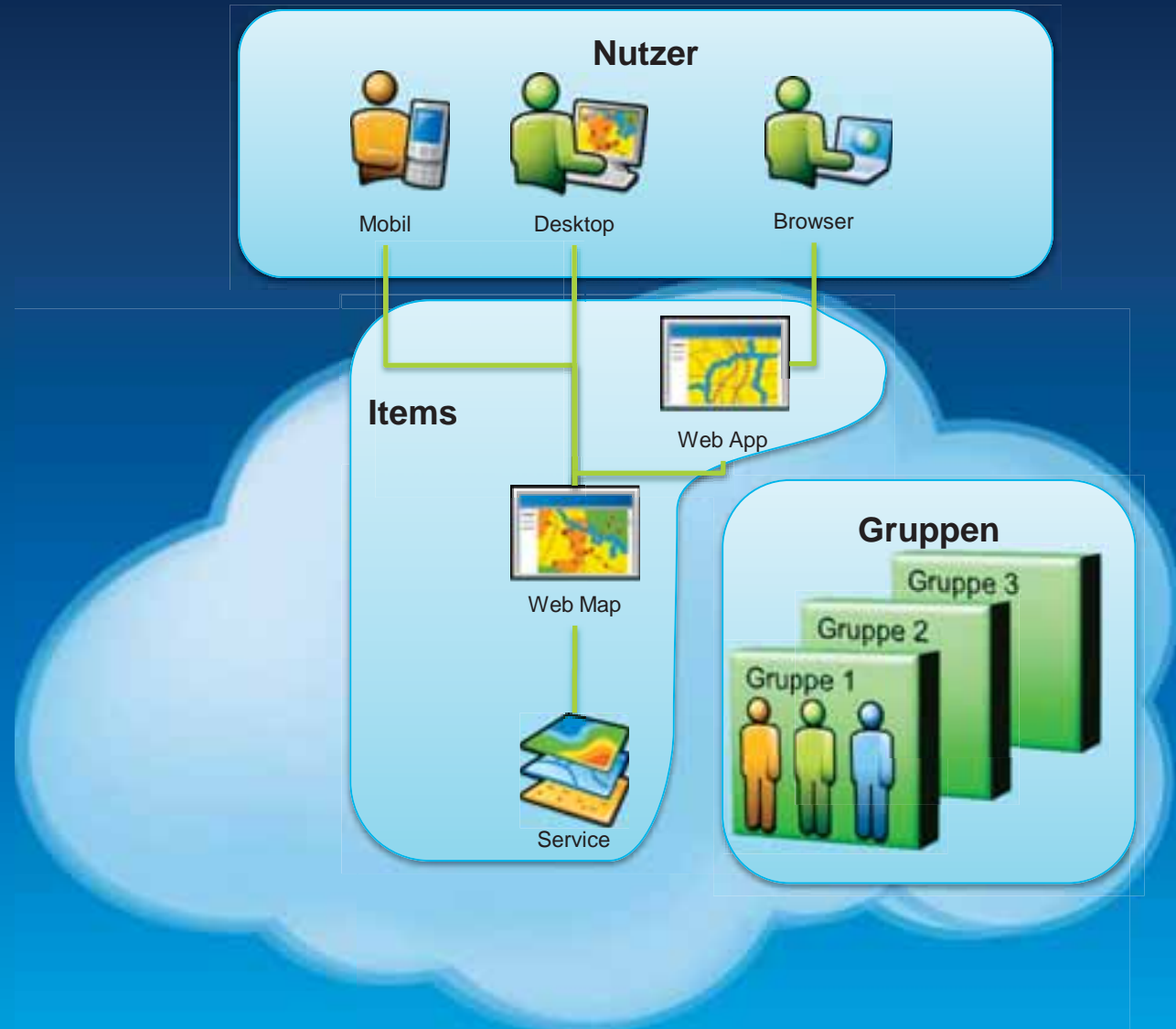
Einfacher Zugang & App Integration



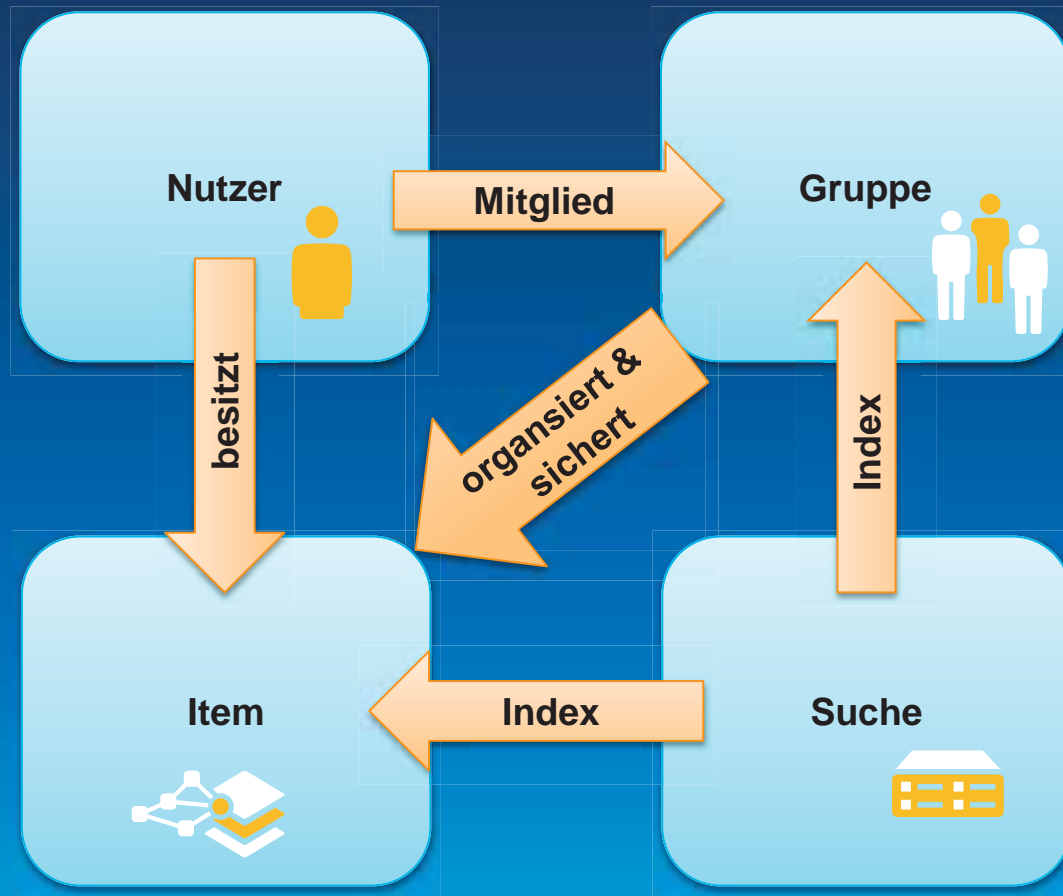
Komponenten der Plattform



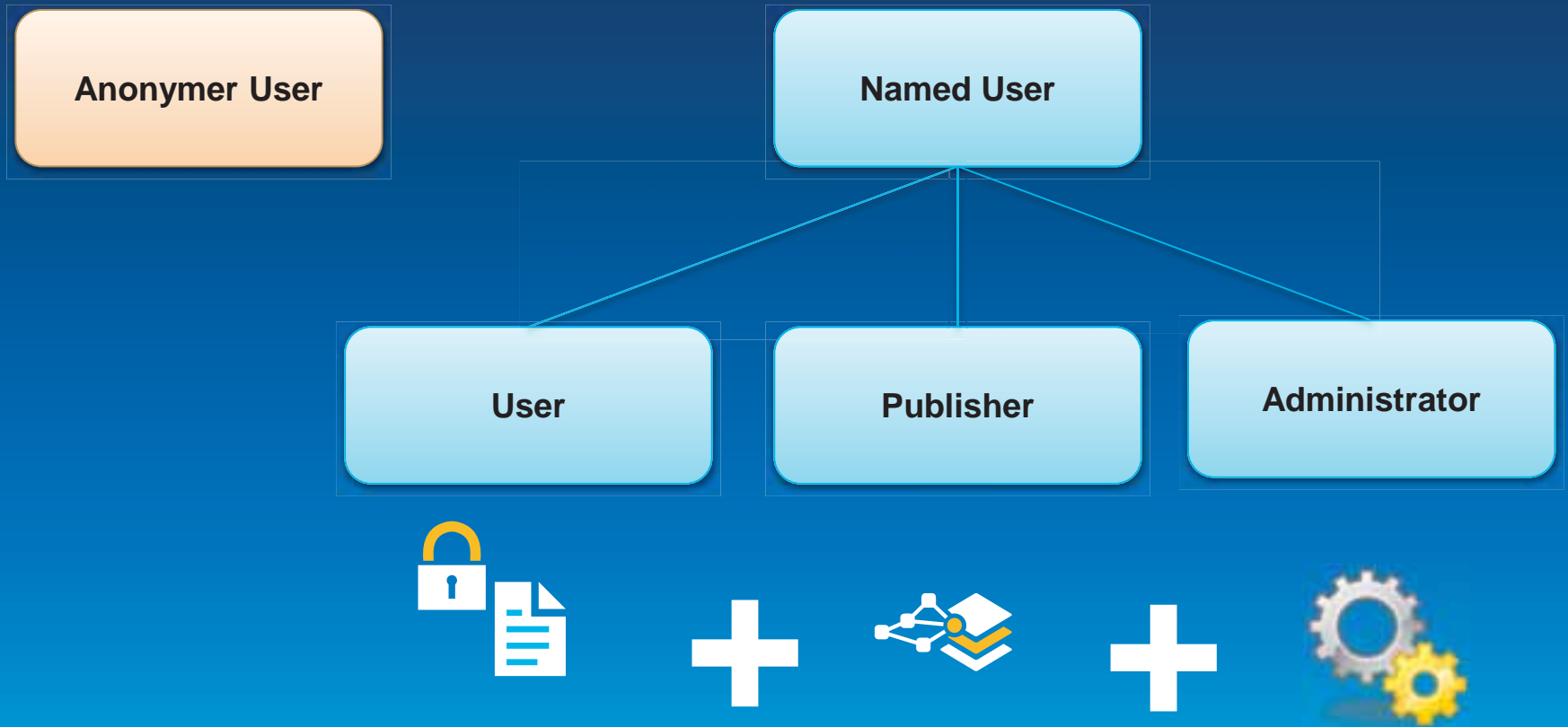
Komponenten der Plattform



Komponenten der Plattform



Nutzer & Rollen



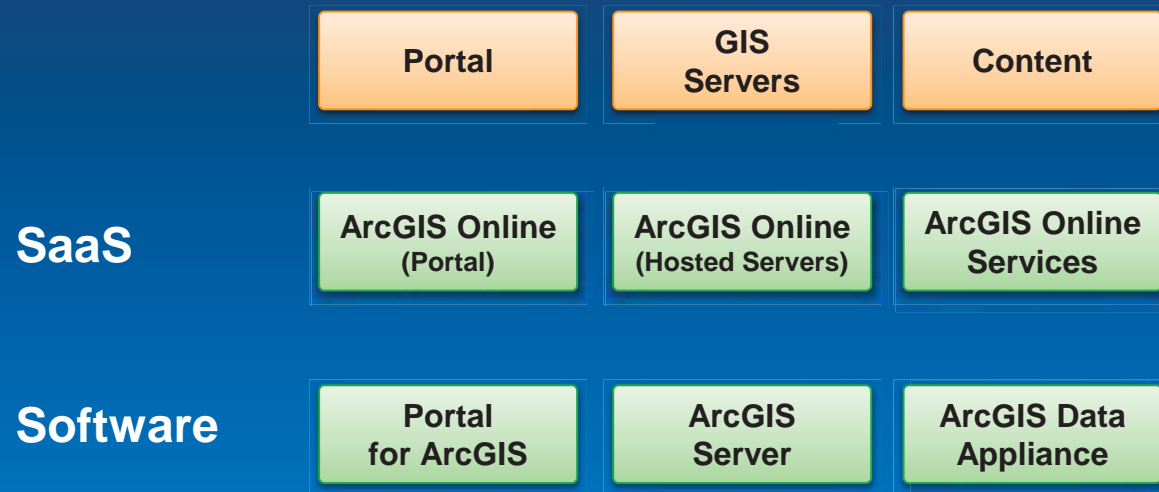
Plattform Demo



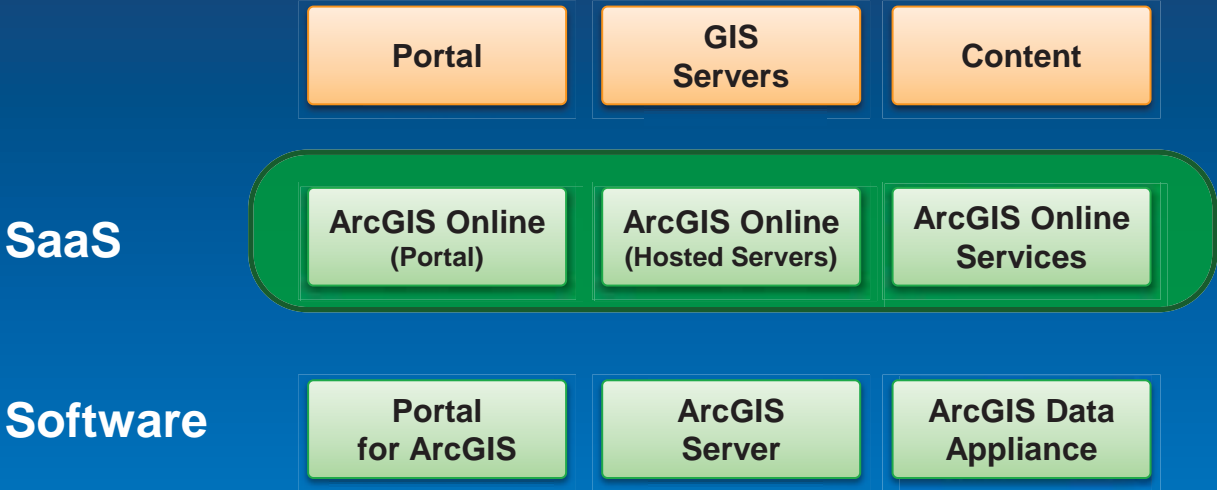
Deployment Patterns



Deployment Patterns



ArcGIS Online - SaaS



ArcGIS Online - Bayerischer Jagdverband



Startseite



Schwarzwidverteilung nach Regierungsbezirk



Schwarzwidverteilung 2012



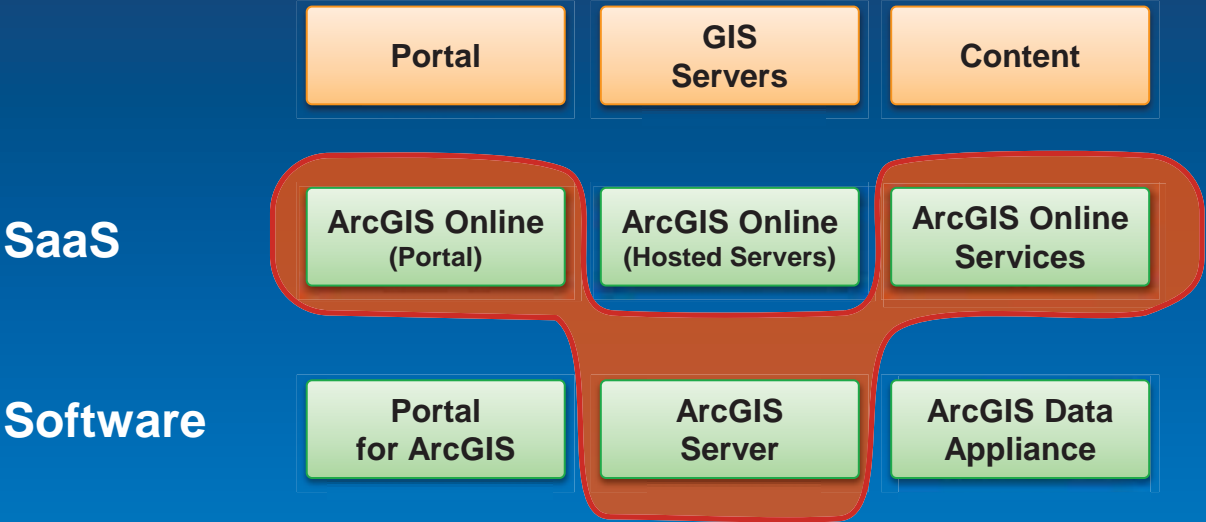
Abschusszahlen Schwarzwid

Ziel des Schwarzwidmonitorings ist es, mit der Hilfe von Daten und Karten zu erfassen. Dazu gehören: Jagdflächen, Feld-Wald-Strukturen, Laubbolzart Abschussstrukturen, Schadensträchtige Flächen, Wildschäden in den Feldern Zukunft mit einem Browser basierten Webklienten erfolgen und so eine Dig Daten ermöglichen. Mittels der Verbindung von digitalen Monitoring und Geo können jagdliche Maßnahmen oder sonstige gezielt umgesetzt werden. Organisation von revierübergreifenden Drückjagden oder auch lebenarumv Wild.

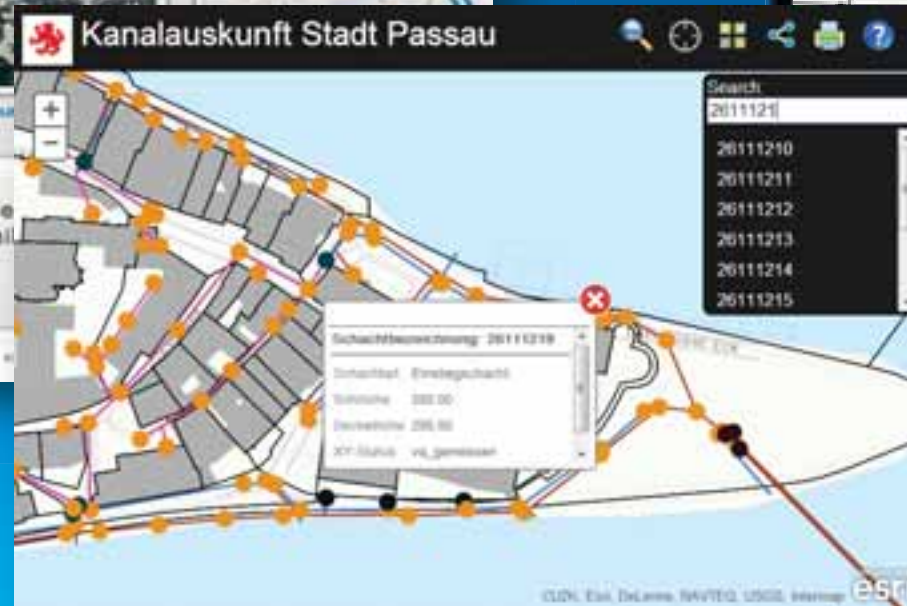
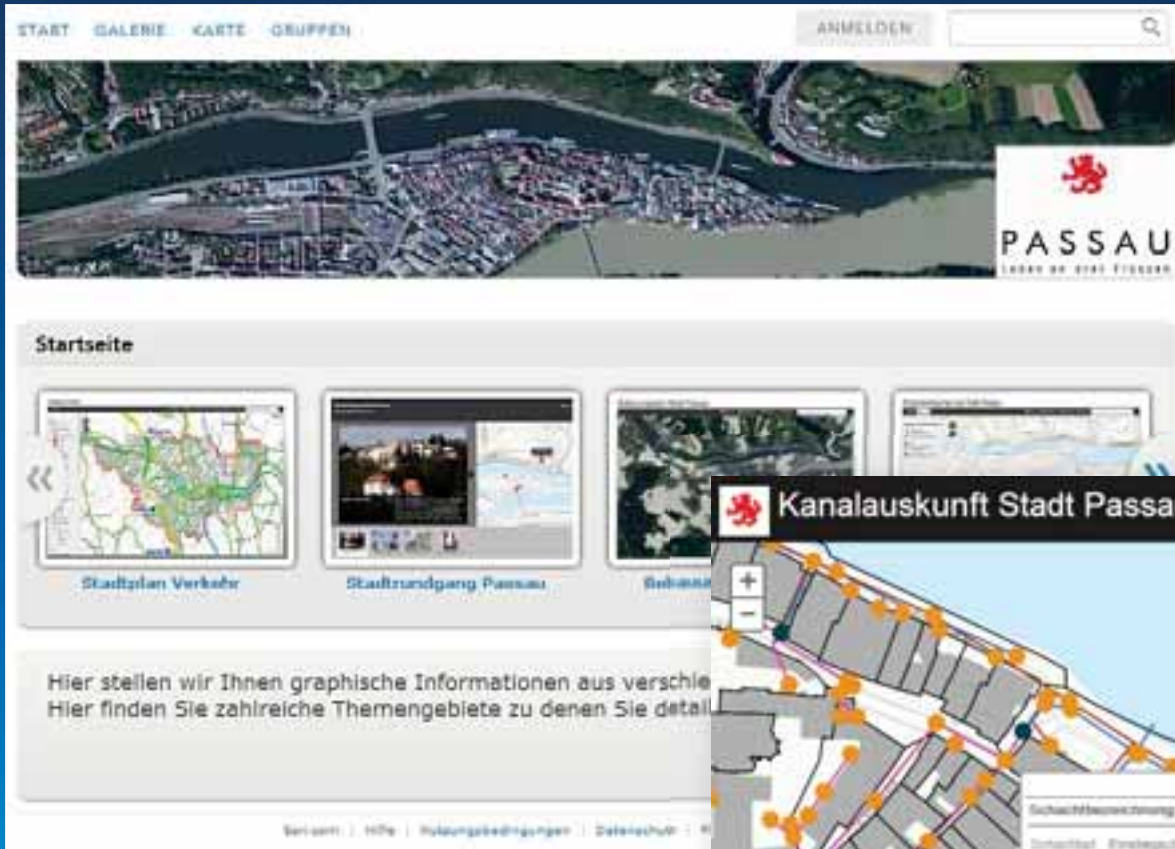
Das Schwarzwidmonitoring liefert so die Eckdaten, die bei einer professionellen Jagd, berücksichtigt werden müssen. Erkenntnisse aus der Art oder Wildschäden sowie Wanderbewegungen des Wildes (usw.) ermöglichen Verhältnisse vor Ort angepasster Jagdstrategien. Die gewonnenen Daten dienen Diskussionen der beteiligten Akteure, als auch auf jagdpolitischer Ebene. Nachvollziehbarkeit sind der Garant für nachhaltiges und erfolgreiches Handeln im Sektor.



ArcGIS Online - Hybrid



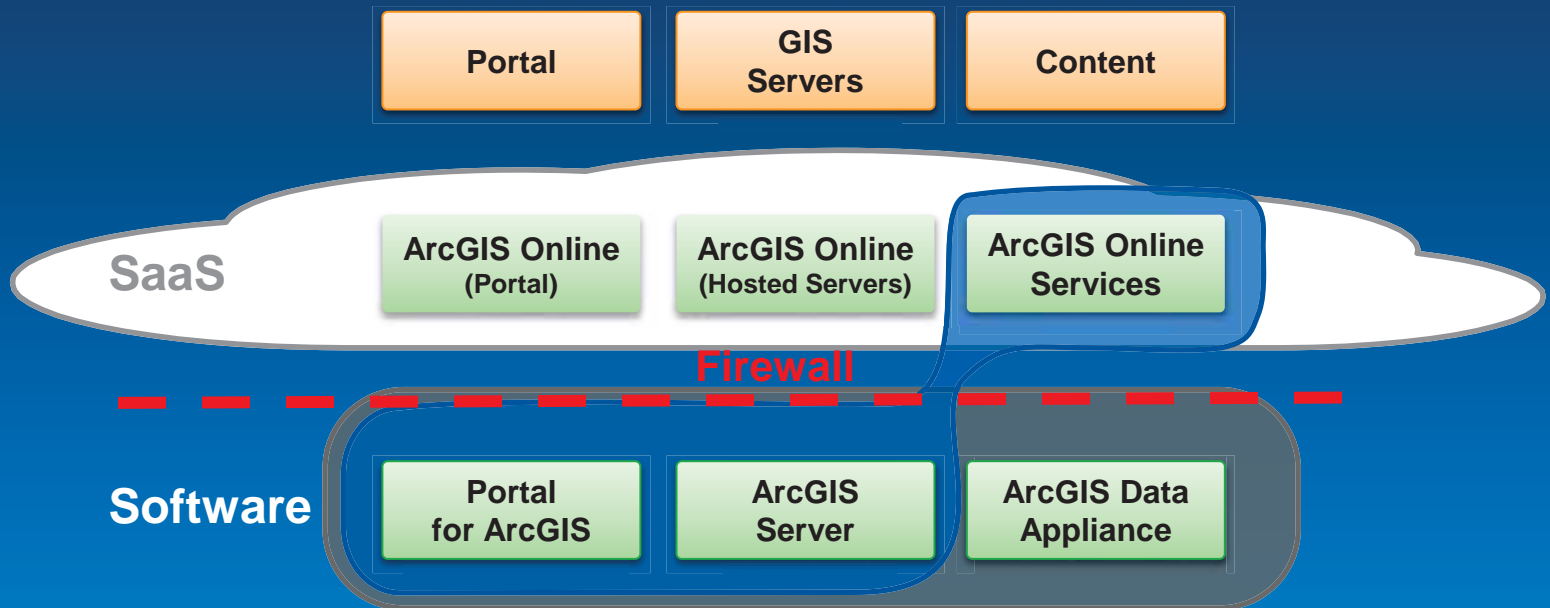
ArcGIS Online Hybrid – Stadt Passau



Portal for ArcGIS



Wann brauche ich Portal for ArcGIS?



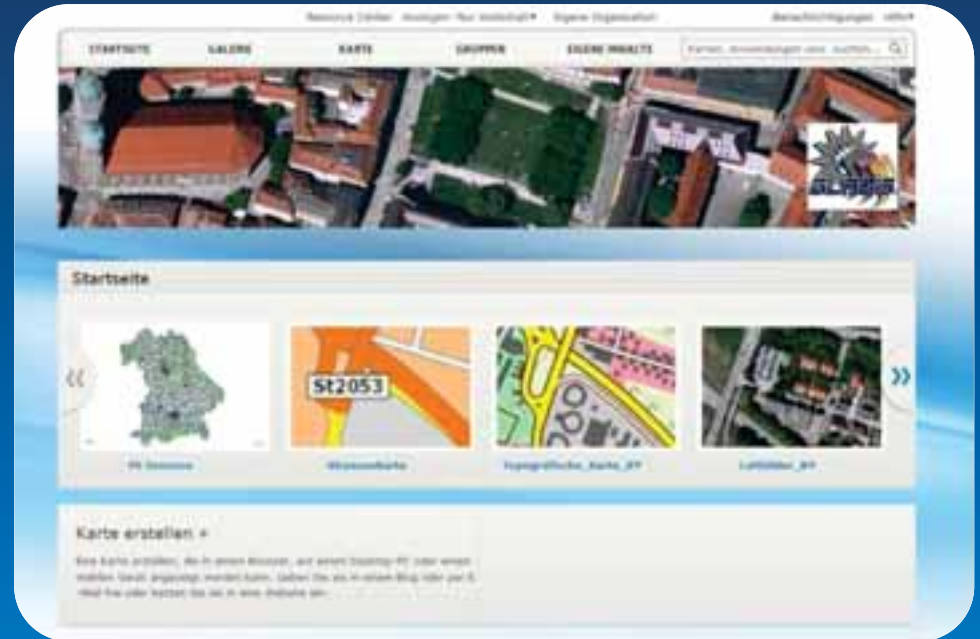
Portal for ArcGIS – Polizei Bayern

- **Einsatz seit 2012**

- > Portal 1.6
- > Portal 1.6.1
- > Portal 10.2 EAP
- > Portal 10.2

- **Lösung**

- > Voll Offline
- > SSL Konfiguration
- > Active Directory Integration
- > Server Federation



ArcGIS Online vs. Portal for ArcGIS

- Der Funktionsumfang ist weitgehend vergleichbar, jedoch nicht identisch!
- ArcGIS Online ist funktional mindestens ein Release voraus

Architektur



Systemanforderungen

- **Windows**

- > Windows Server 2012 Standard and Datacenter
- > Windows Server 2008 Standard, Enterprise, and Datacenter (maximum version supported is SP2)
- > Windows Server 2008 R2 Standard, Enterprise, and Datacenter (maximum version supported is SP1)

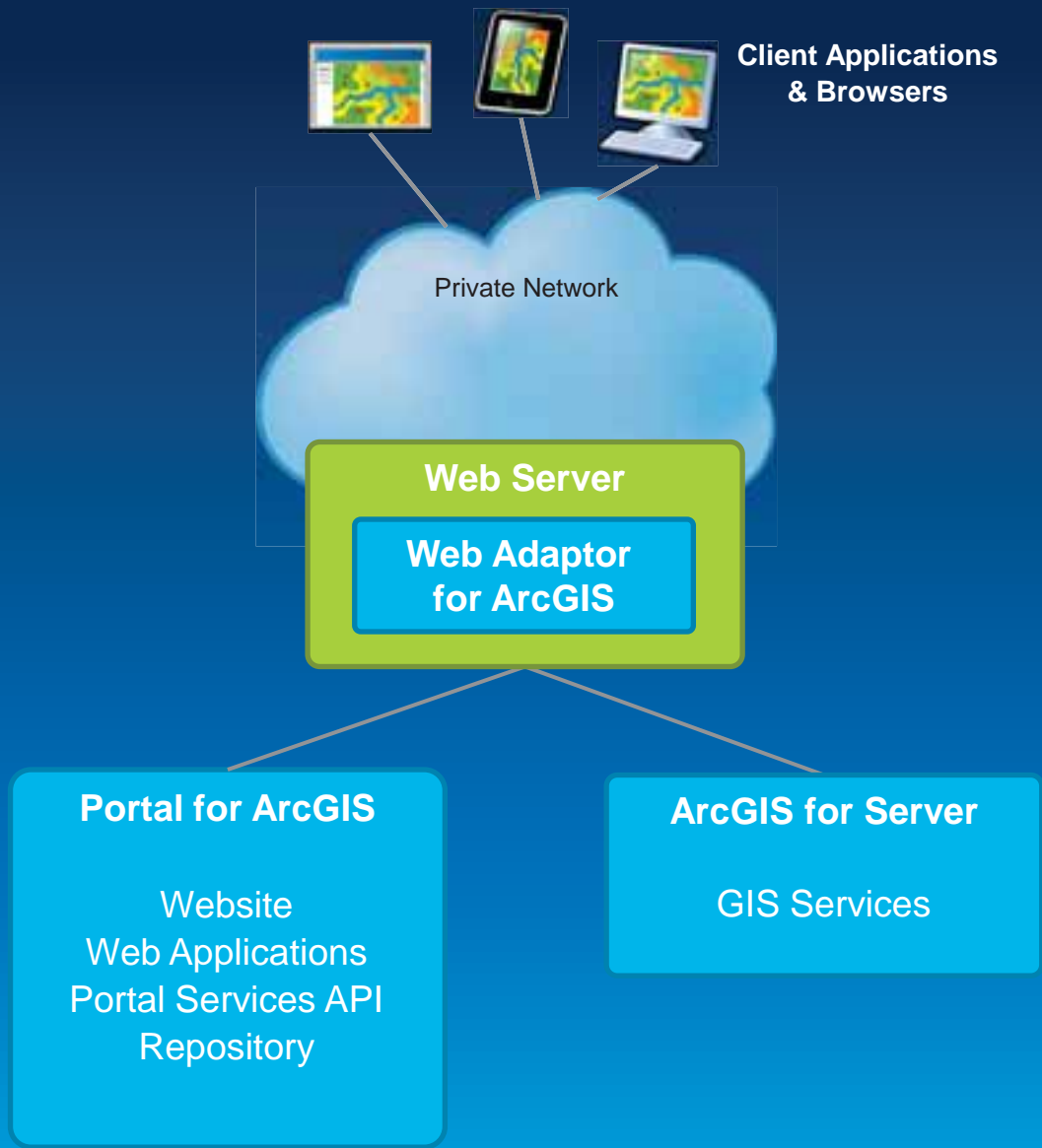
- **Linux**

- > Red Hat Enterprise Linux Server 6
- > Red Hat Enterprise Linux Server 5 Update 7 with libX11 patch
- > SUSE Linux Enterprise Server 11 Service Pack 1

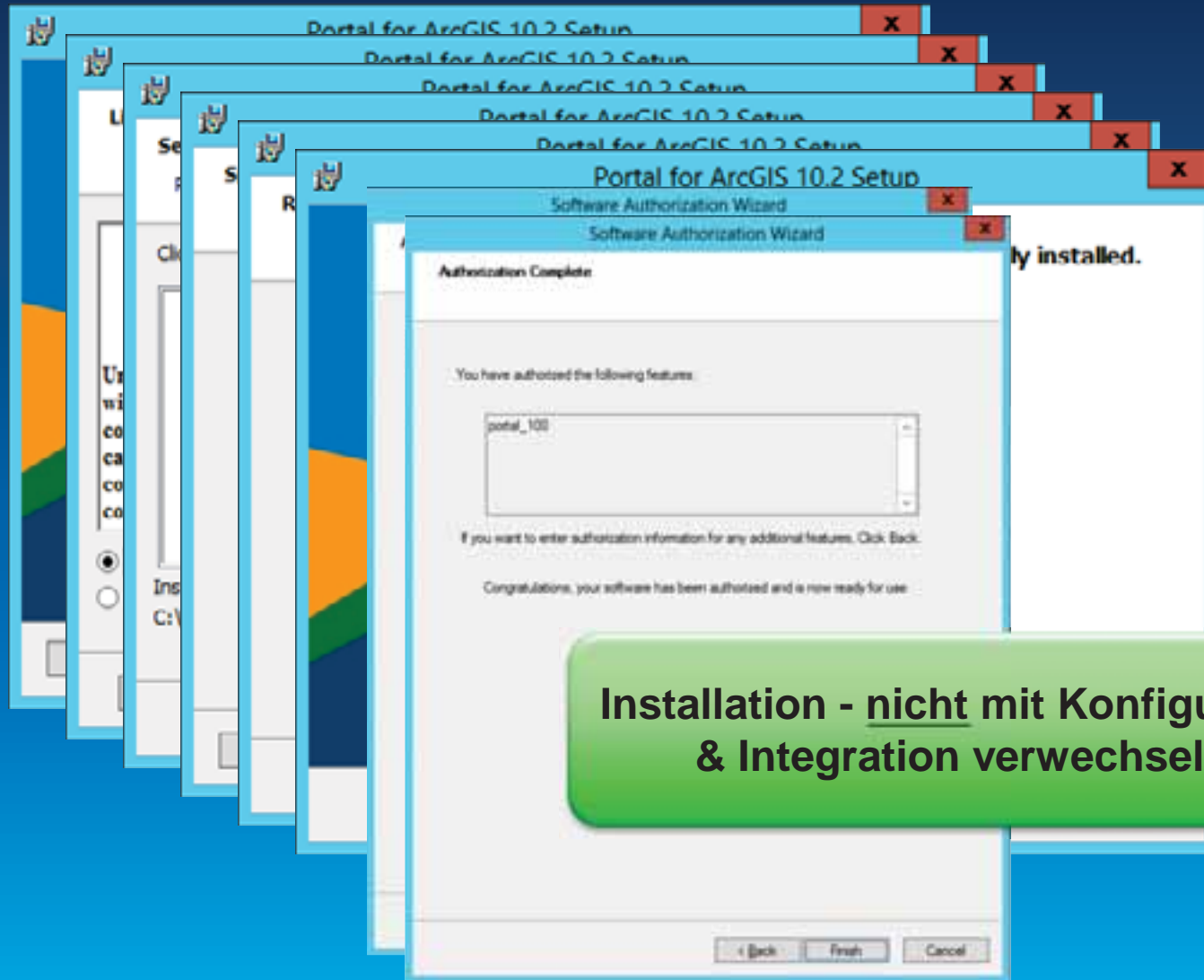
- **Hardware**

- > Processor: 4 cores for 100 concurrent users
- > Memory/RAM: 4 GB or more

<http://resources.arcgis.com/en/help/main/10.2/index.html#//017s00000038000000>



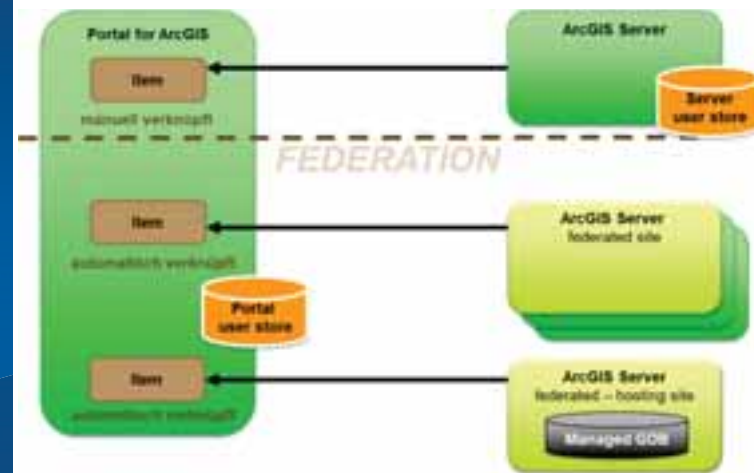
Installation & Lizenzierung



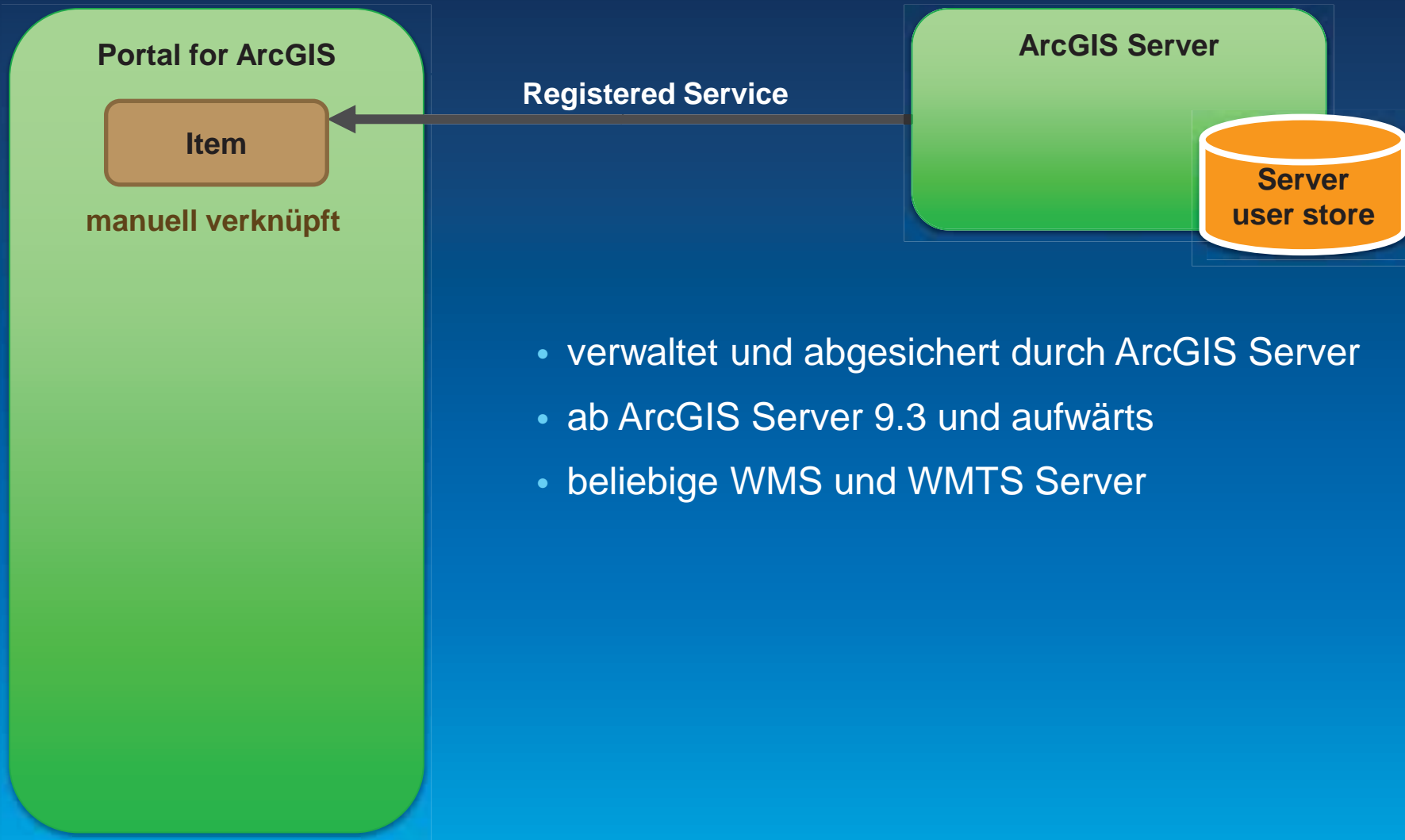


Integration

Wie integriert sich ArcGIS Server in Portal for ArcGIS?

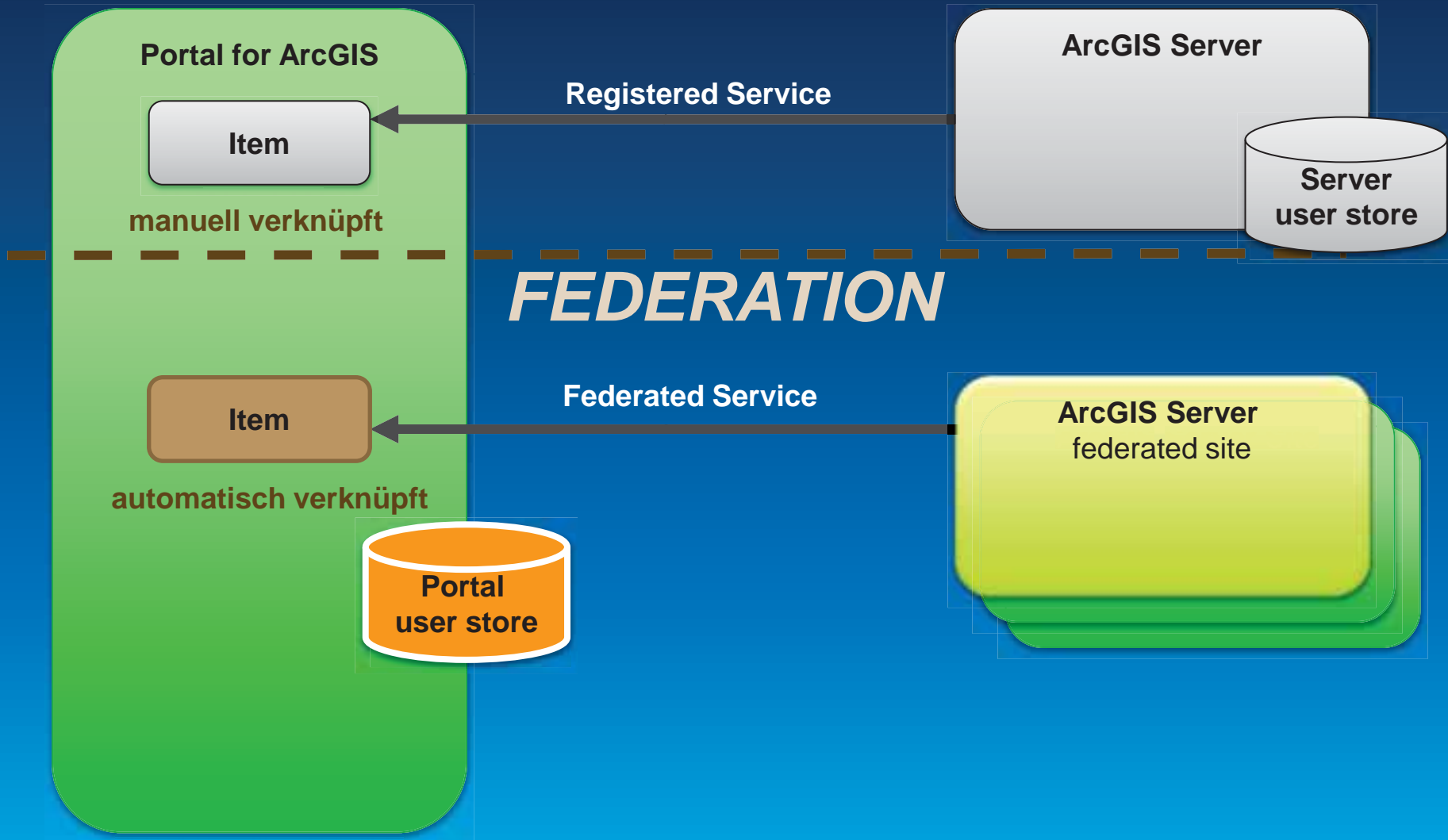


Registered Service

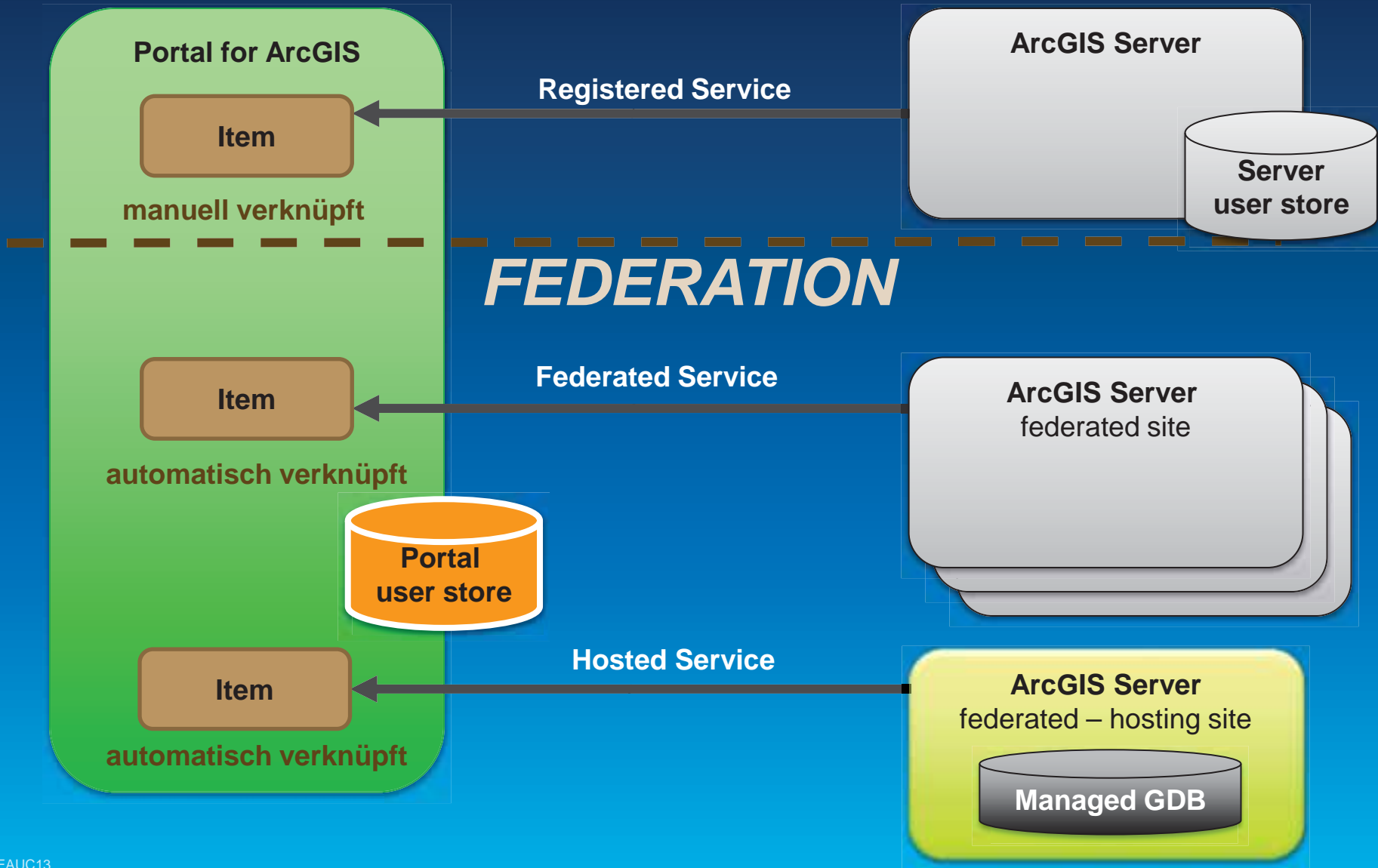


- verwaltet und abgesichert durch ArcGIS Server
- ab ArcGIS Server 9.3 und aufwärts
- beliebige WMS und WMTS Server

Federated Service

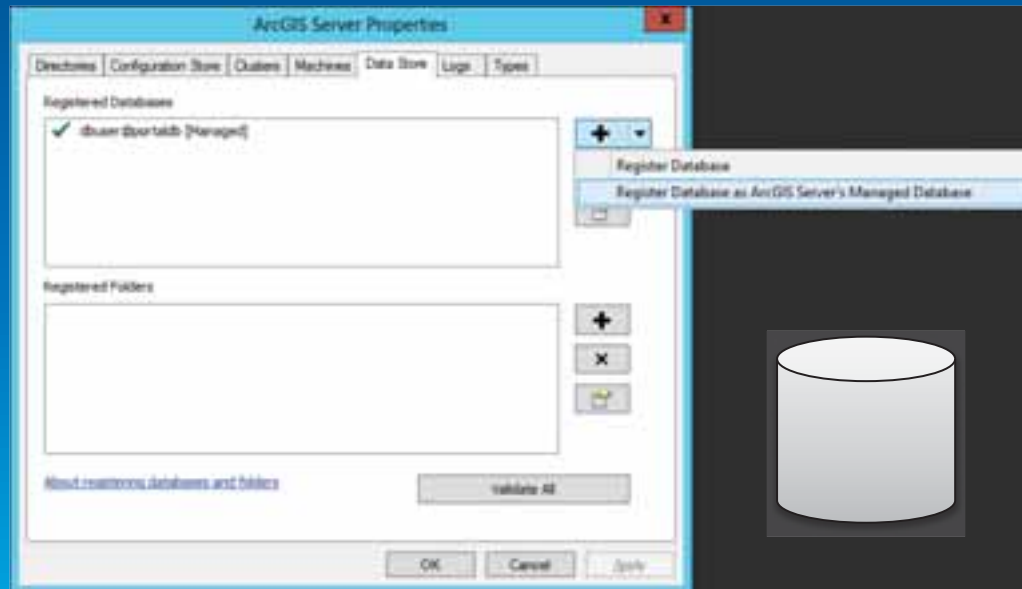


Hosted Service



Hosted Services

- **Voraussetzungen:**
 - > Federated ArcGIS for Server
 - > Multiuser Geodatabase
 - > ArcGIS Server Managed Database



Hosted Services

- **Erzeugung der Services**

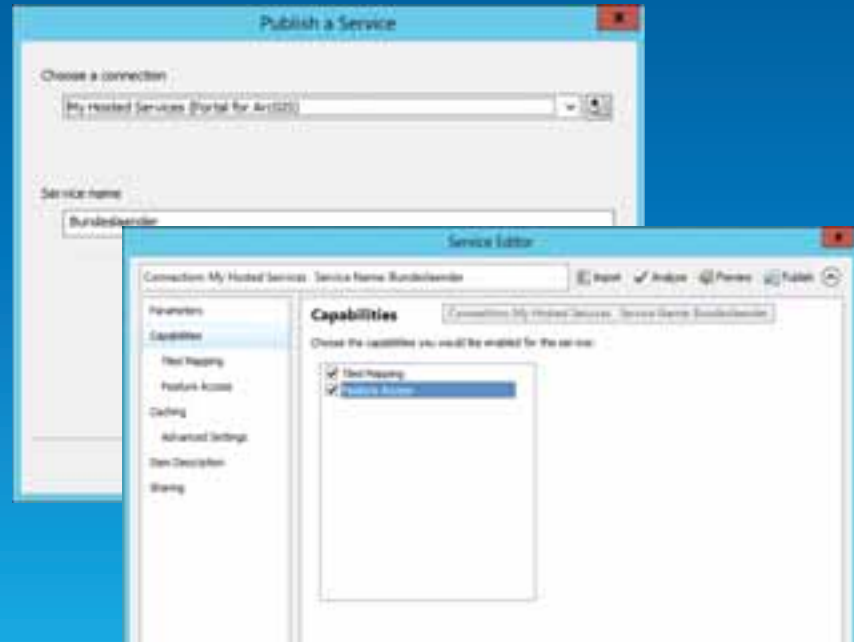
- > Hosted Feature Services

- > Shapefiles oder CSV via Web Interface

- > ArcGIS Desktop, Esri Maps for Office

- > Hosted Tile Services

- > ArcGIS Desktop



Hosted Services

The screenshot shows the 'Servers' configuration page in an ArcGIS Portal. The page title is 'Servers' and it includes a navigation menu with options like HOME, GALLERY, MAP, GROUPS, and MY CONTENT. A search bar is present with the text 'Find maps, applications and more...'. Below the navigation, there are 'Save' and 'Cancel' buttons. The main content area is divided into two sections: 'Federated Servers' and 'Hosting Server'. The 'Federated Servers' section contains a table with one entry: a checkmark, the URL 'https://vsk0004.lab01.eggs.net:6443/arcgis', and a red 'X' icon. The 'Hosting Server' section is highlighted with a red box and contains a dropdown menu with the selected value 'vsk0004.lab01.eggs.net'.

Servers

You can add ArcGIS Server sites to your portal to achieve a single-sign-on experience, share items, and optionally host services. A server that has been added to a portal is called a federated server.

Federated Servers

Add one or more servers to your portal.

Validate Servers Add Server

Servers		
✓	https://vsk0004.lab01.eggs.net:6443/arcgis	✗

Hosting Server

Optionally choose one of your federated servers to act as your portal's hosting server. Your portal users will be able to publish services to this server. ArcGIS Server's Managed Database must be configured on the site before it can be designated as the portal's hosting server.

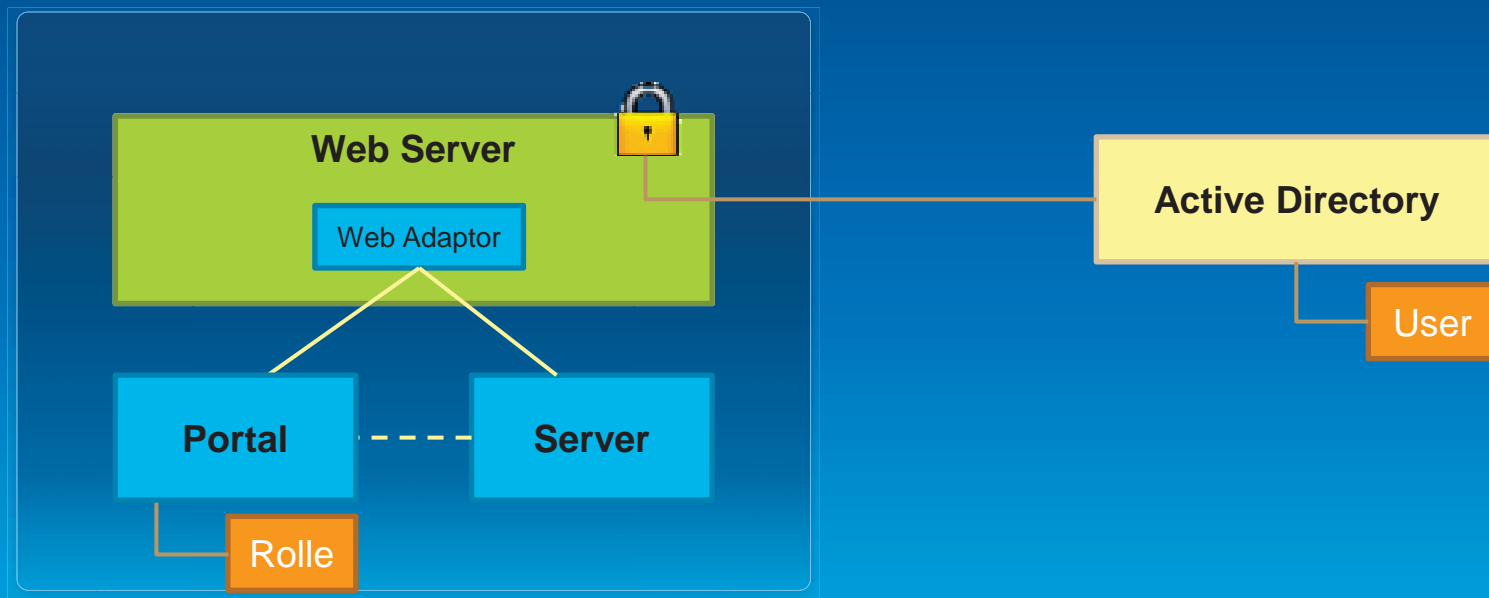
vsk0004.lab01.eggs.net

Identity Provider



Identity Provider

- **Built-in user store**
- **Enterprise logins – mit Single Sign On**
 - > Windows Active Directory
 - > LDAP



Lizenzierung



Lizenzsicht

The screenshot shows the Esri website's 'Portal for ArcGIS Server Extension' page. The navigation bar includes 'Home', 'Industries', 'Products', 'Training', 'Support', 'Services', 'Events', 'News', and 'About'. The 'Products' dropdown menu is open, showing 'ArcGIS for Server' with sub-links for 'Main', 'Features', 'System Requirements', 'Extensions', 'Showcase', 'Pricing', and 'Evaluate'. The 'Extensions' link is selected, leading to a table of server extensions. The 'Advanced' license tab is highlighted with a red box and a red arrow. A red checkmark and the number '10.2' are visible in the bottom right corner.

	Basic	Standard	Advanced
ArcGIS Schematics for Server		✓	✓
ArcGIS 3D Analyst for Server			✓
ArcGIS Spatial Analyst for Server			✓
ArcGIS Geostatistical Analyst for Server			✓
ArcGIS Network Analyst for Server		Optional	✓
ArcGIS GeoEvent Processor for Server		Optional	Optional
ArcGIS Data Interoperability for Server		Optional*	Optional*
ArcGIS Data Reviewer for Server		Optional*	Optional*
ArcGIS Workflow Manager for Server		Optional*	Optional*
ArcGIS Image Extension for Server		Optional	Optional
ArcGIS for INSPIRE		Optional	Optional
ArcGIS ArcPad Extension for Server			Optional*
Portal for ArcGIS			Optional

Portal for ArcGIS - Lizenzierung

- Extension für ArcGIS for Server Advanced
 - Ein Named User als Admin inklusive
 - Unbegrenzter anonymer Zugriff
- Lizenzierung über Named User
 - Named User sind zwingend personalisiert
 - Bestellung weiterer Blocks – analog ArcGIS Online



ArcGIS Desktop Entitlement

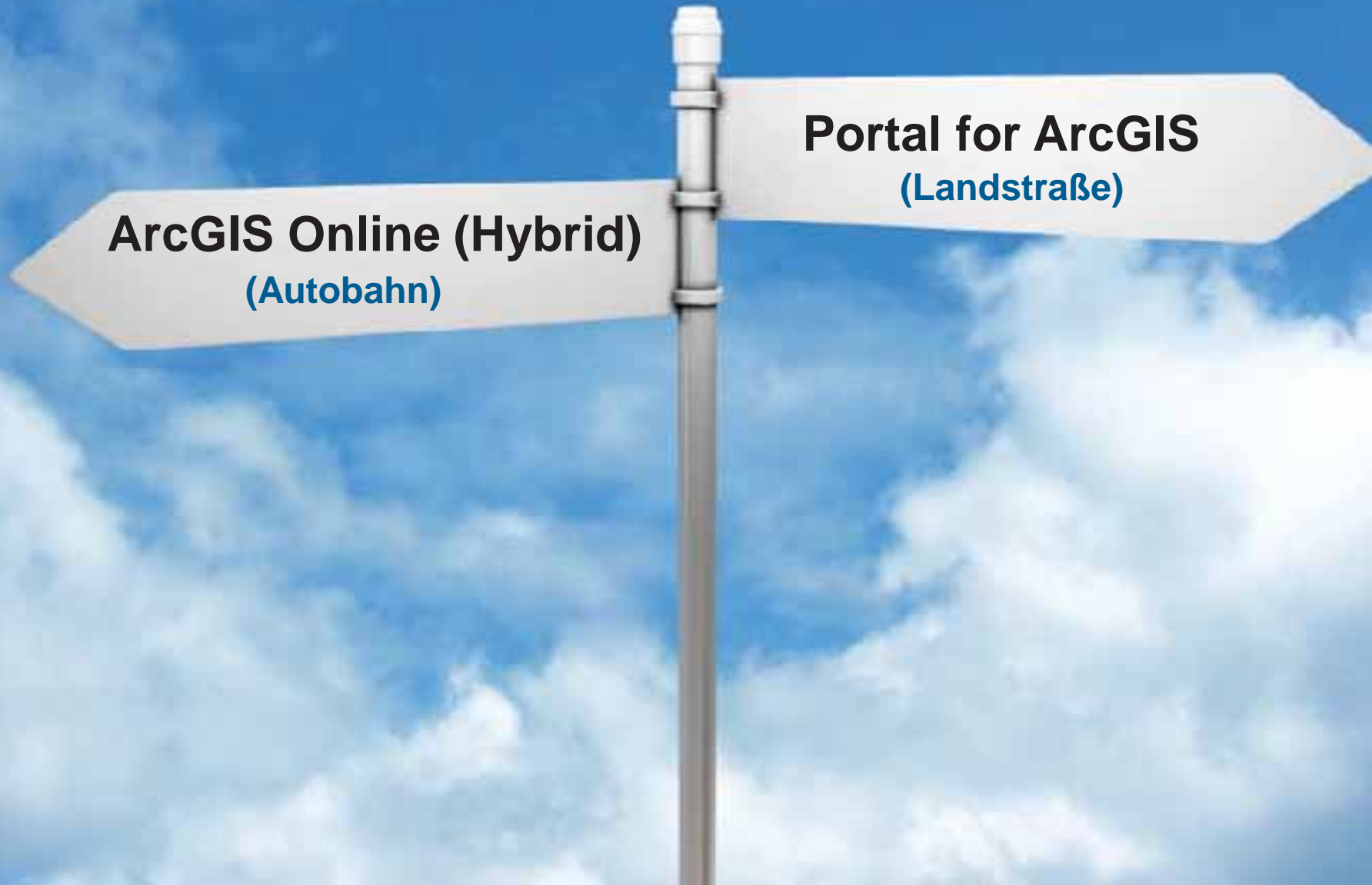
- Für jeden ArcGIS Desktop:
 - ArcGIS Desktop muss in Wartung sein
 - ein Named User für Portal oder ArcGIS Online
 - Gesonderte Betrachtung bei:
 - Concurrent Use
 - ELA - Enterprise License Agreement



Implementierung



Auswahl des Deployment Patterns



ArcGIS Online (Hybrid)
(Autobahn)

Portal for ArcGIS
(Landstraße)

Portal for ArcGIS

- **Einsatz falls:**

- > Keine Internetanbindung
- > Compliance Vorgaben

- **Voraussetzungen:**

- > Mitarbeiter
- > Infrastruktur
- > Betrieb
- > Wartung
 - > Update Cycle
 - > Migrationsaufwände

Workshop Portal for ArcGIS

- **Inhalt**

- > Aufbau eines Portal for ArcGIS Staging systems

- **Themen**

- > Installation Portal for ArcGIS
 - > Konfiguration Portal Website
 - > Integration ArcGIS for Server
 - > Integration ArcGIS for Desktop
 - > Security (SSO)



Ressourcen

- Online Hilfe

- User

http://resources.arcgis.com/en/help/main/10.2/index.html#/What_is_Portal_for_ArcGIS/019300000007000000/

- Admin

http://resources.arcgis.com/en/help/main/10.2/index.html#/What_is_Portal_for_ArcGIS/017s00000006000000/

- Beratungsangebot:

- Strategieworkshop zu Deployment Patterns
- Starterpaket Portal for ArcGIS
- Email an:

consulting@esri.de