

**2013 Esri Europe, Middle East,
and Africa User Conference**

October 23-25 | Munich, Germany



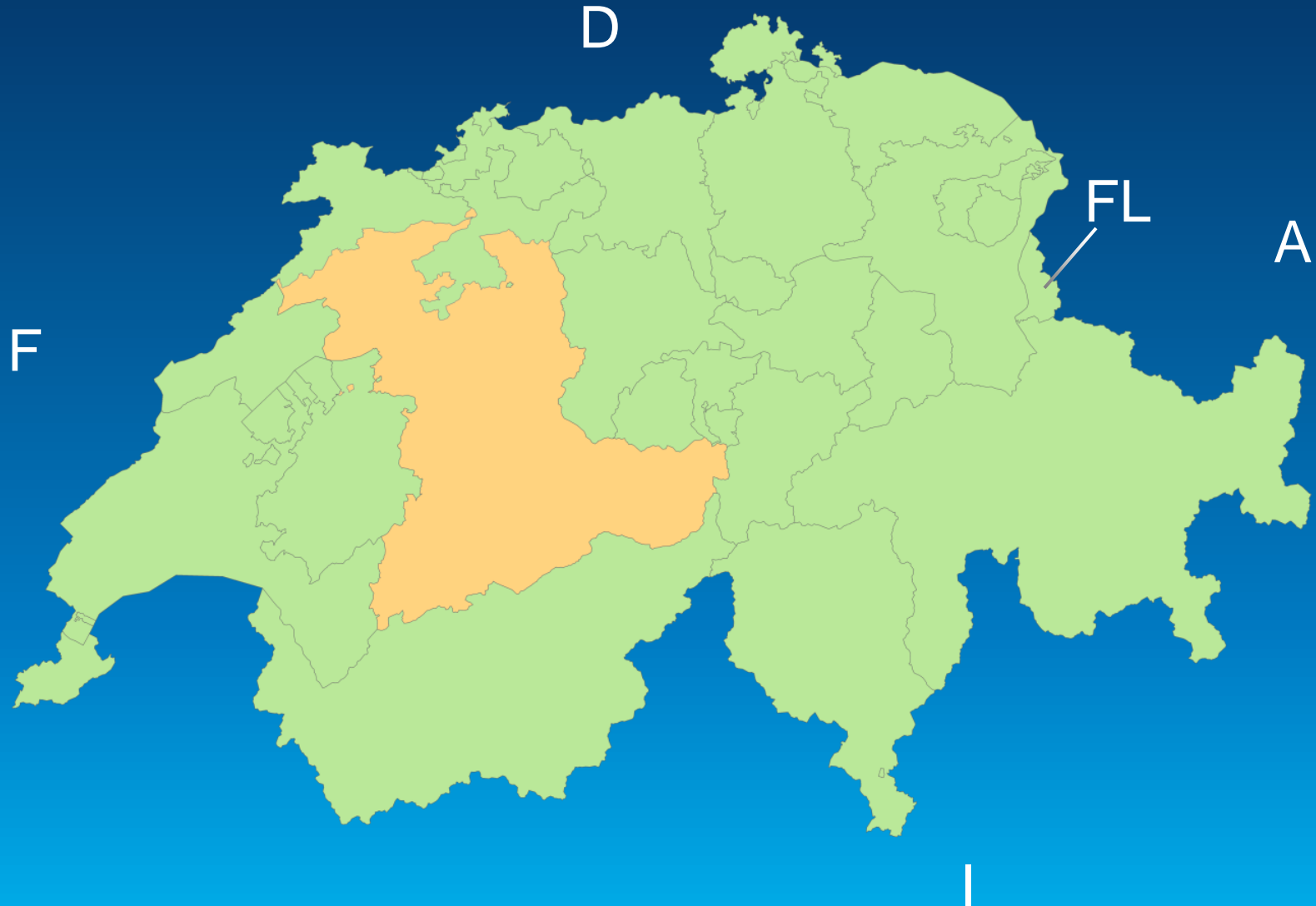
(Arc)GIS in Crime Analysis

at the cantonal police of Berne

Markus Schlager



The cantonal police of Berne



The cantonal police of Berne

- Canton Berne
- Population ~ 1,000,000



The cantonal police of Berne



The cantonal police of Berne



The cantonal police of Berne



The cantonal police of Berne

- City Bern
 - Population ~130,000
 - Capital of the canton Bern
 - Federal city of Switzerland



The cantonal police of Berne

- Place of Command
- ~ 2,800 employees

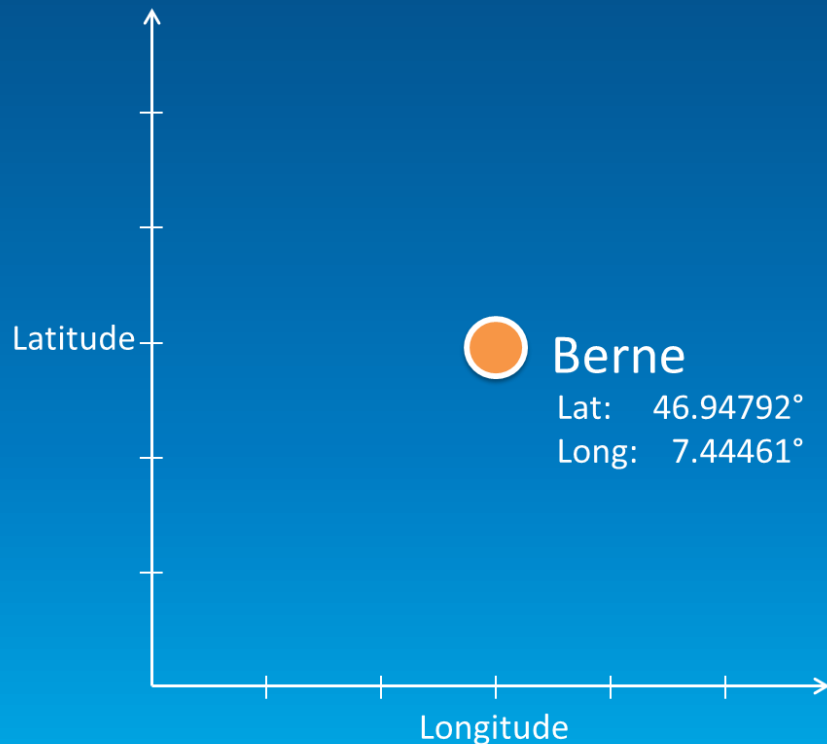


Our data base – the case

- When?
- What?
- Who?
- Where?
- ...
- ...
- Why?

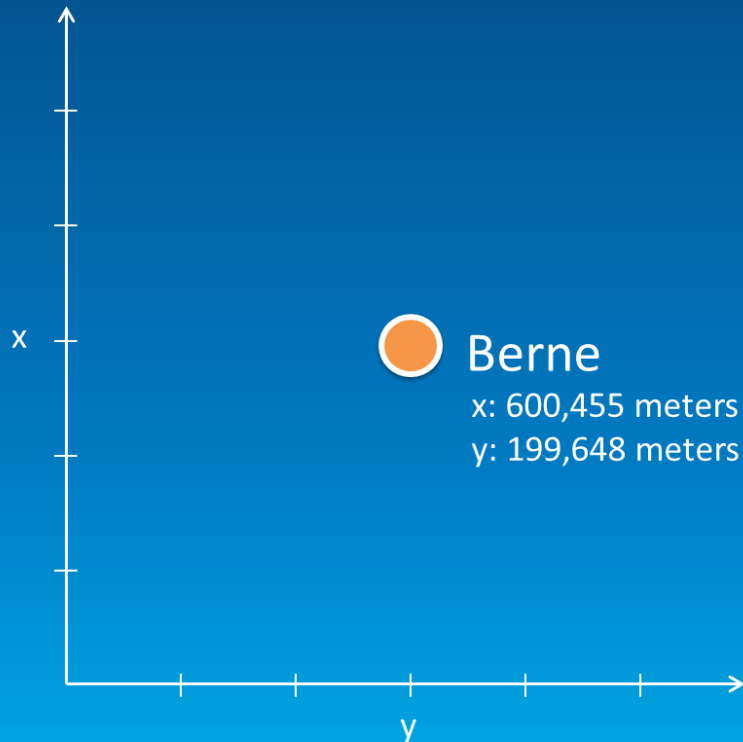
Our data base – the case

- Where?
 - Latitude and Longitude



Our data base – the case

- Where?
 - x and y (Swiss national coordinate system)

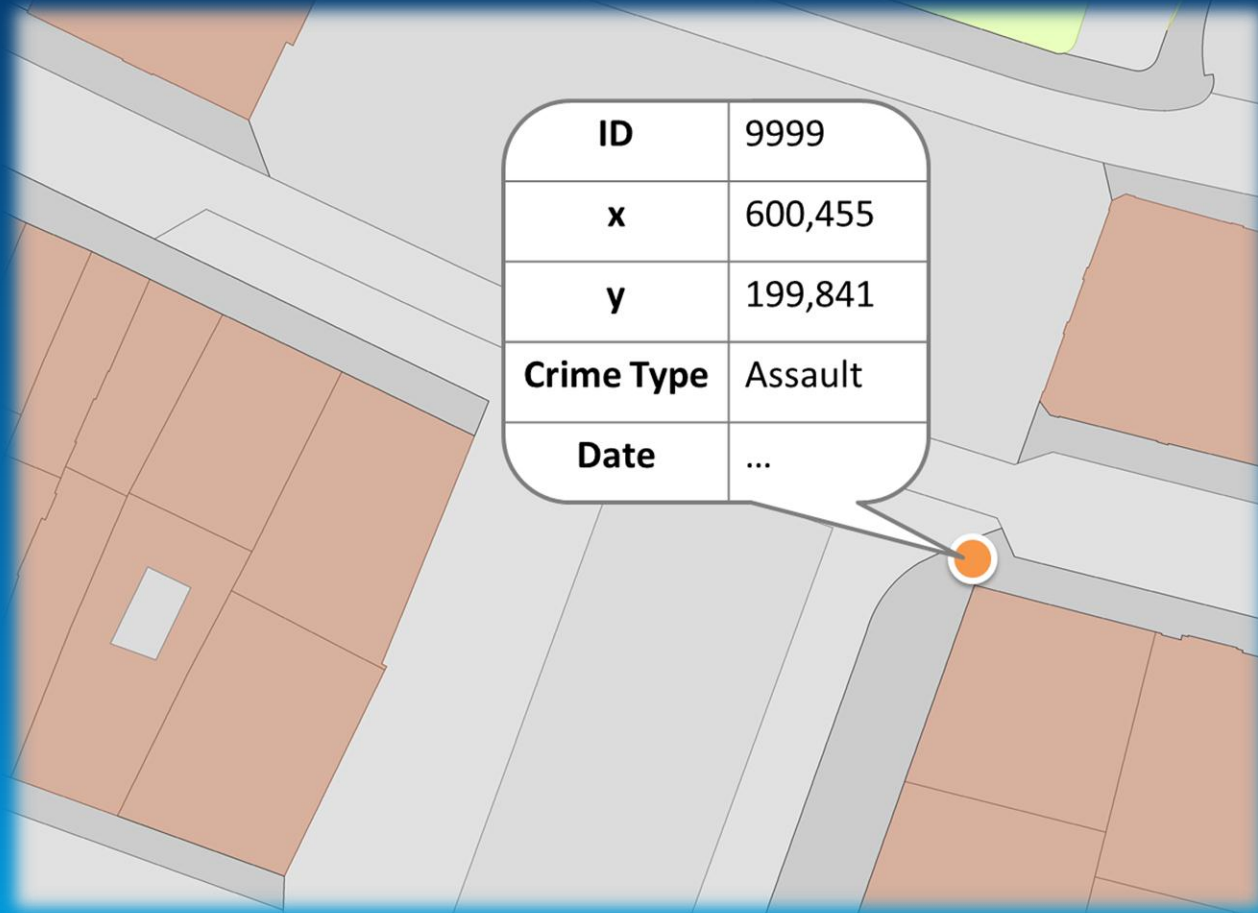


Our data base – the case

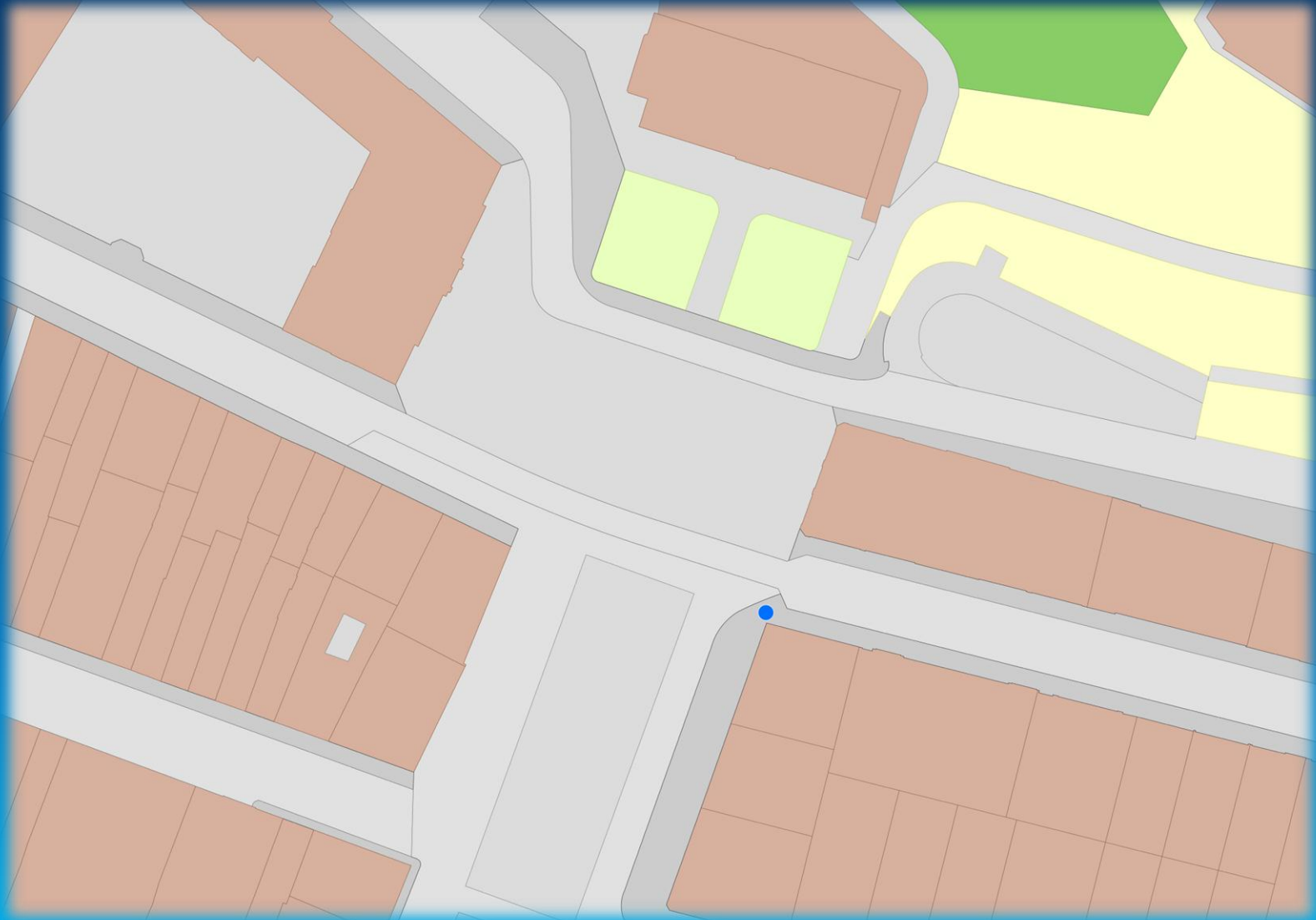
- Where does the “Where” come from?
 - Emergency control center
 - Patrol or Police station
- Every case has a location
- Cases → Database



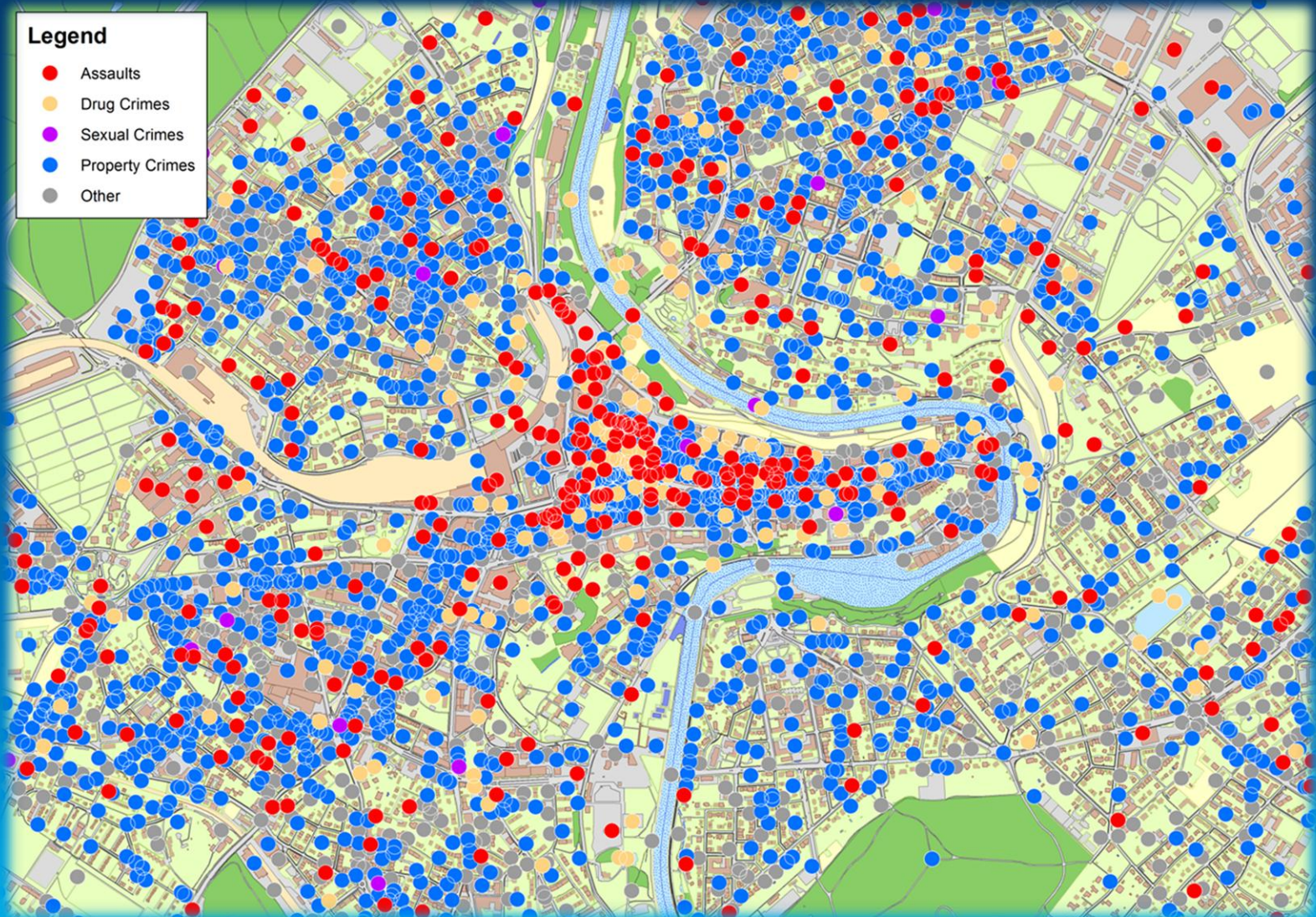
Our data base – the case



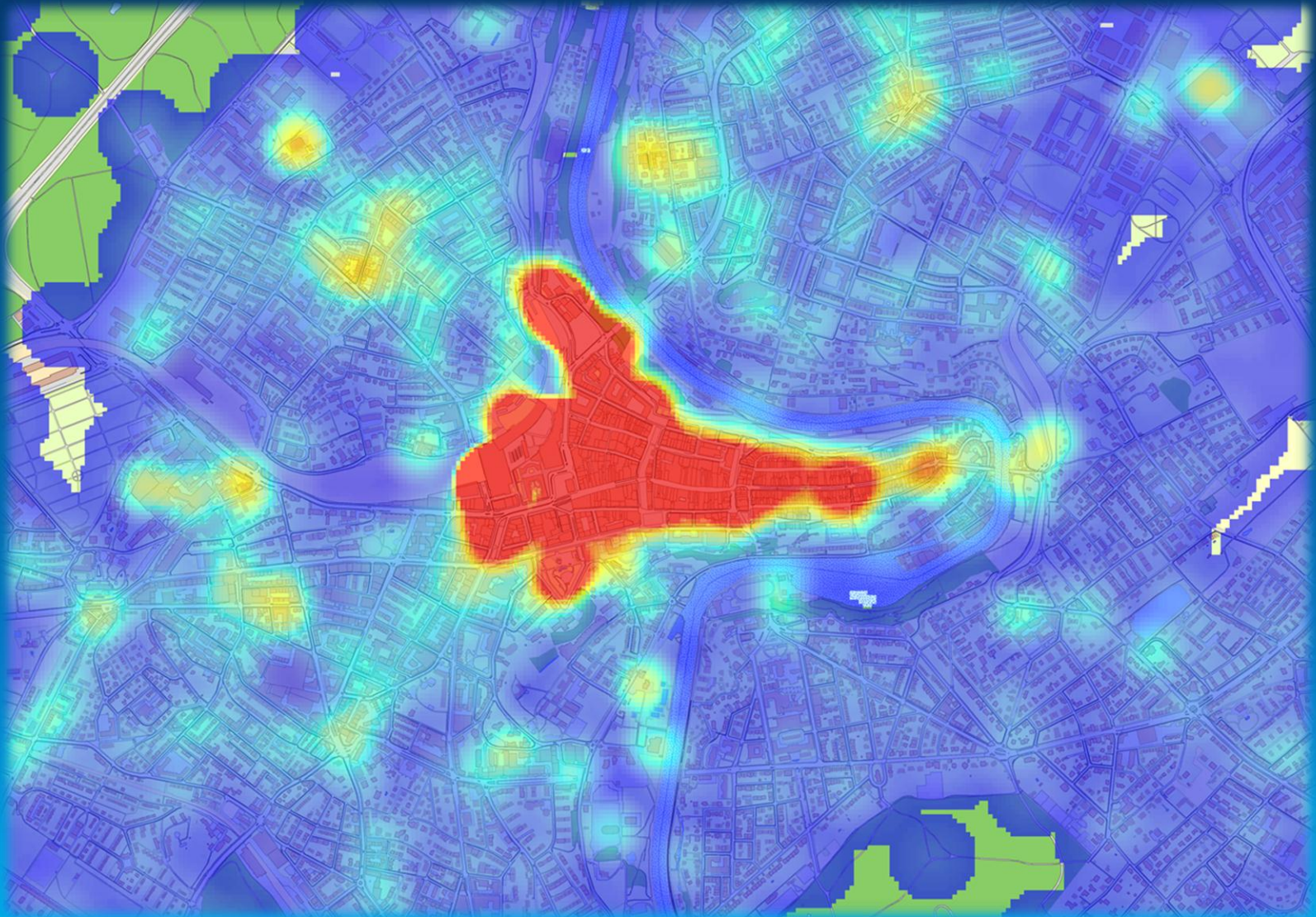
Bring order to the chaos



Bring order to the chaos



Bring order to the chaos



Crime Analysis?

- Systematic study of crime and disorder problems
- Assists police:
 - Criminal apprehension
 - Crime and disorder reduction
 - Crime prevention
 - Crime evaluation

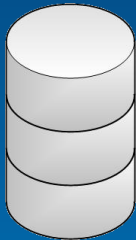
According to Boba (2008) – Crime Analysis with Crime Mapping

GIS Crime Analysis Tasks

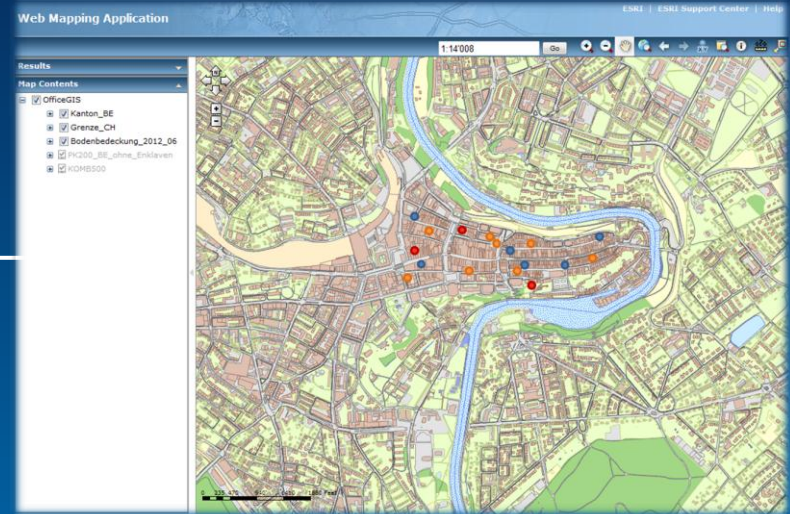
- Filter
- Classify
- Visualize
- Analyze

GIS resources

Cantonal Geo-Data-Warehouse



ArcGIS Server



ArcGIS Desktop



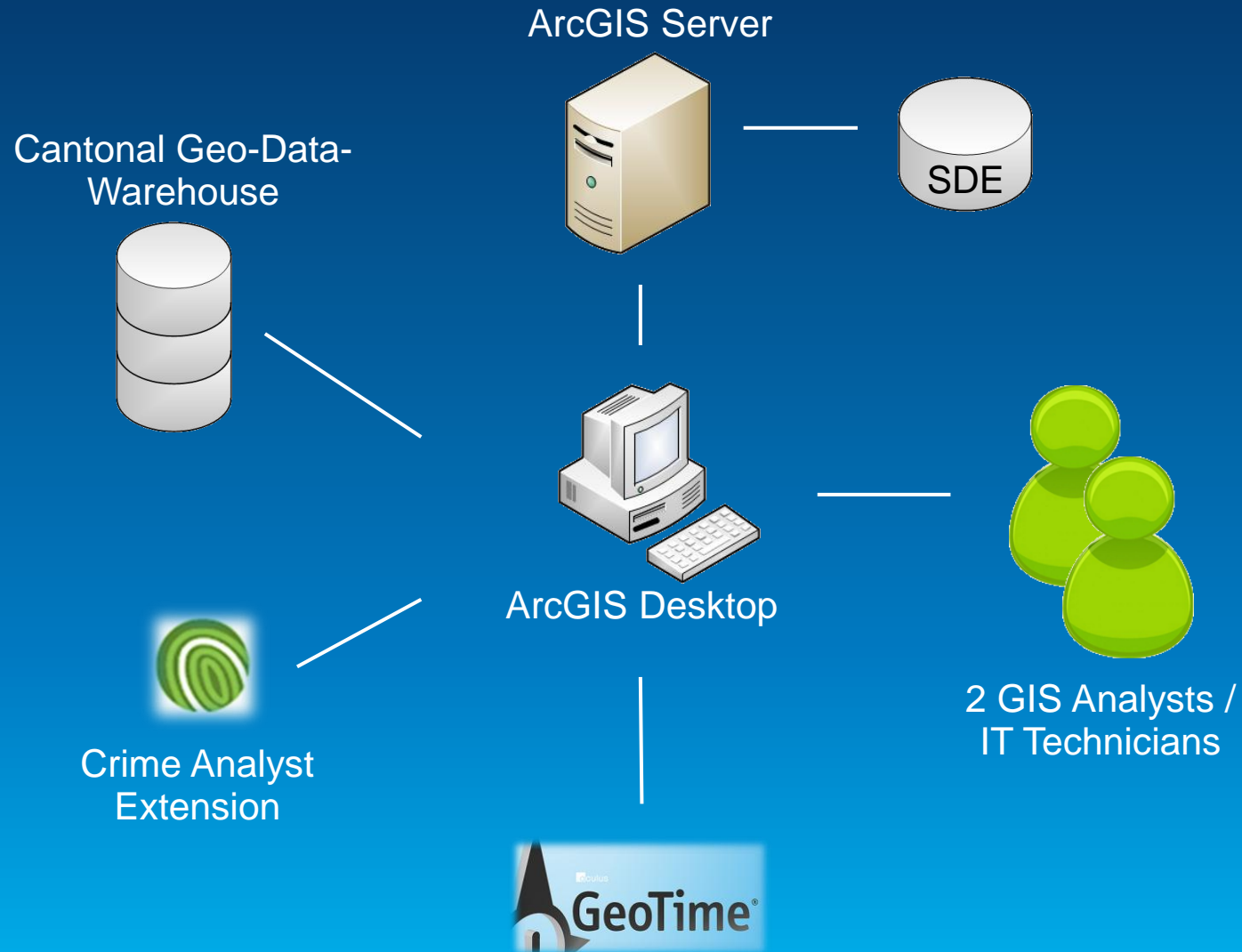
2 GIS Analysts /
IT Technicians



Crime Analyst
Extension



GIS resources



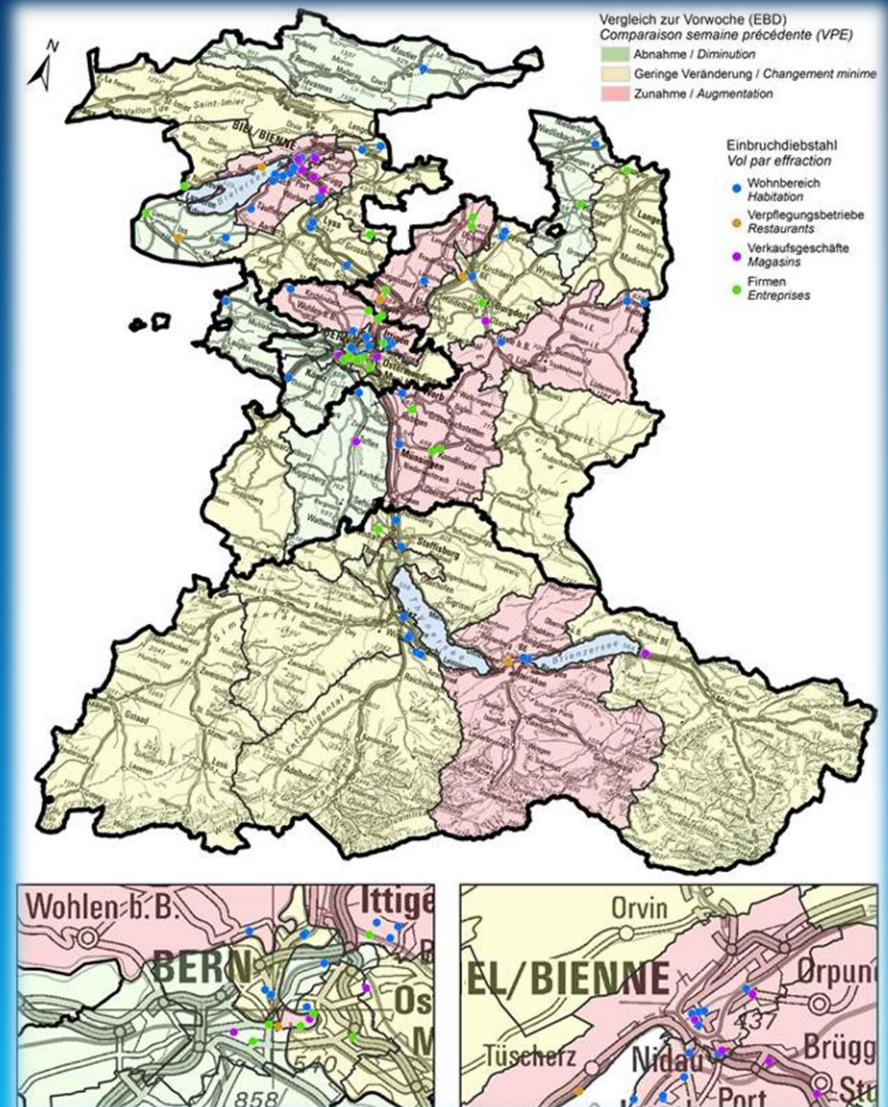
Hotspot maps

- Pros:
 - Easy to read
 - Graphically expressive
- Cons:
 - High risk of misinterpretation - i.e. **red** implicates **dangerous!**
 - Relativization can be difficult - which parameters?



Choropleth maps

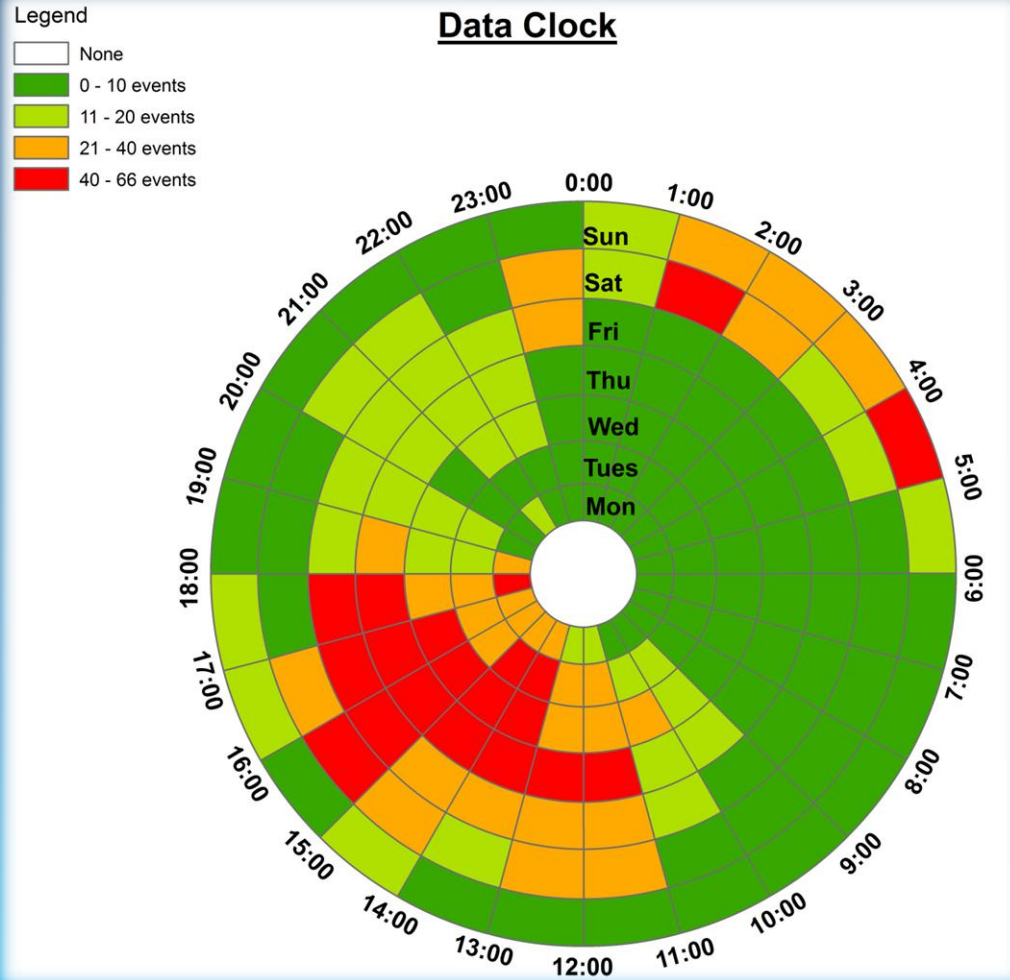
- Pros:
 - Easy to read
 - Good for comparison
- Cons:
 - Non-uniform areas → relativization



Crime Analyst

- Hotspot calculation
- Crime Counts
- Journey-to-Crime
- Repeat Victimization
- Comparative Case Analysis
- ...
- Data Clock

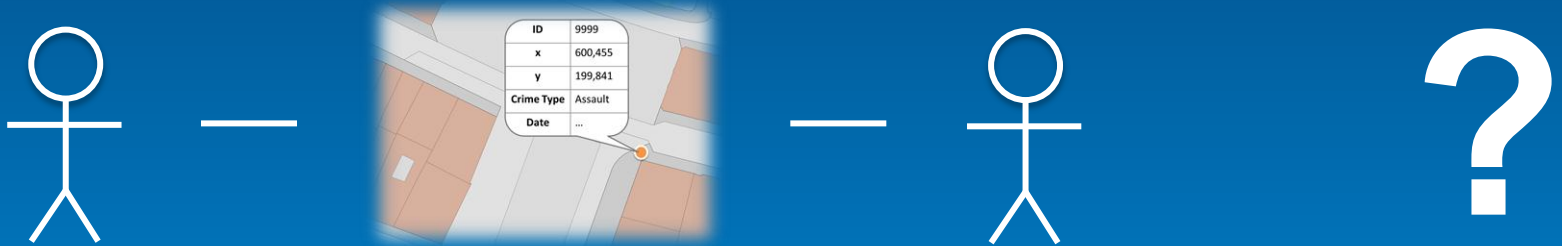
Data clock



Cell Site analysis

- What?
 - Analyse Call data records from phone provider
 - Determine the location of a mobile device at the time,
 - phone calls
 - SMS
 - MMS
 - data connections
- occurred.

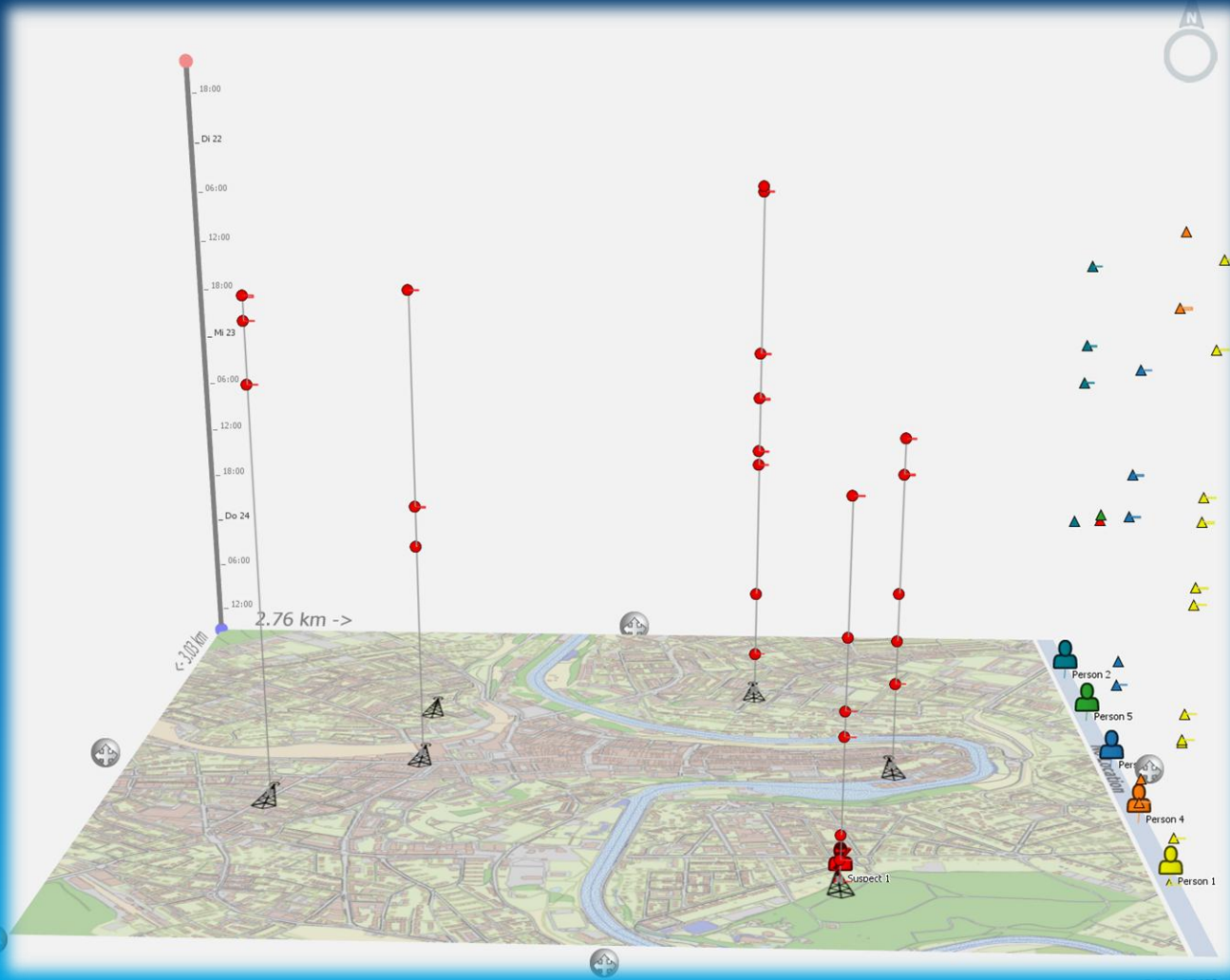
Cell Site analysis – use cases



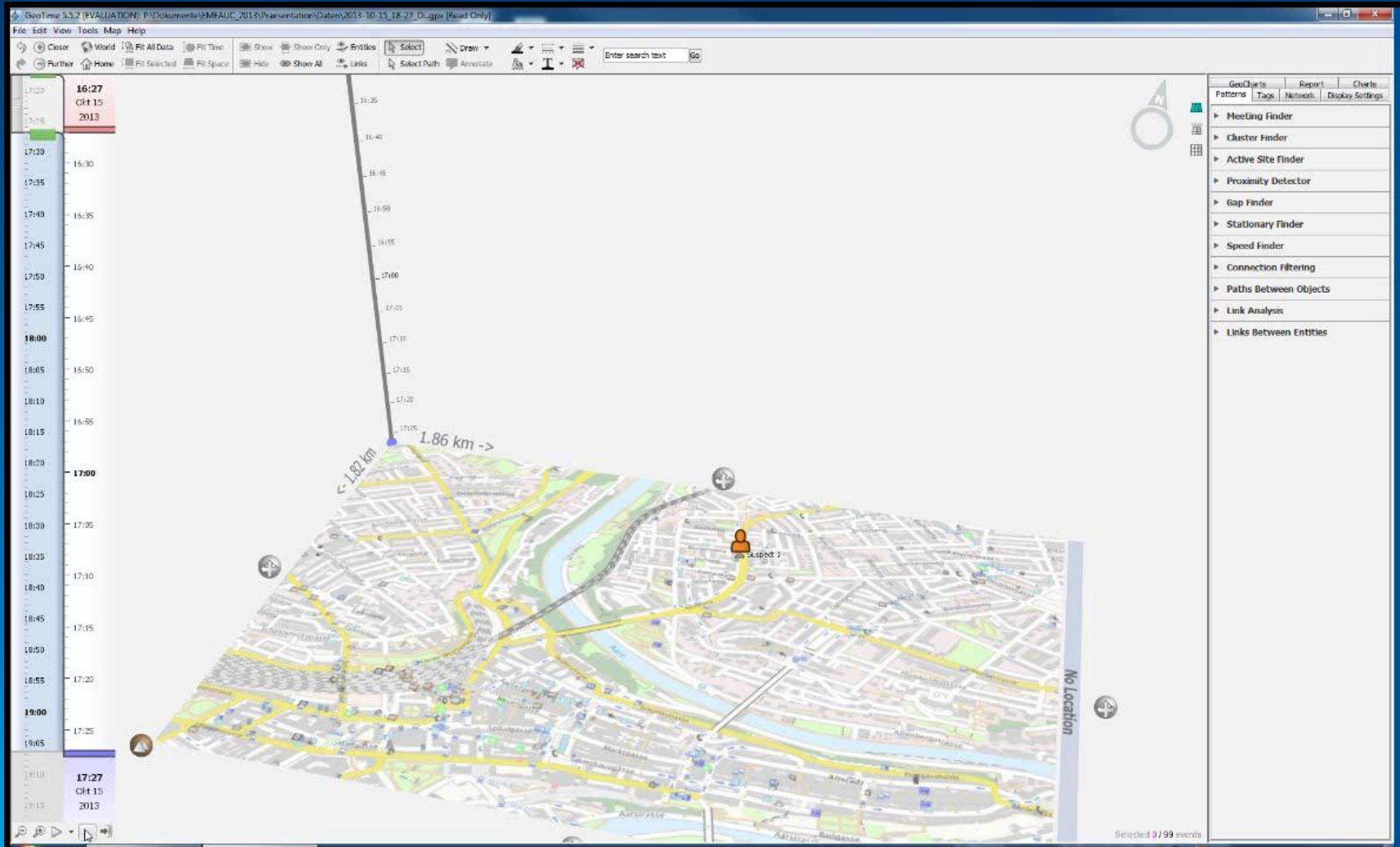
GeoTime

- Viewer and (visual) analysis tool
- Spatio-temporal data
- Pattern-detection-algorithms
 - Meeting finder
 - Proximity Detector
 - Gap finder
 - Stationary finder
 - ...

GeoTime – 3D View



GeoTime – Video



Challenges and outlook

- Case database not spatially enabled → exports
- (Data-) Isolation of highly specialized subsystems
- Data-privacy → online-services, cloud...
- Growing need for GIS-visualisations
- Applicability of crime-analysis methods and applications
- Federalism

Questions?

Markus Schlager
psgm (at) police.be.ch
0041 31 / 634 43 15