

**2013 Esri Europe, Middle East,  
and Africa User Conference**

October 23-25 | Munich, Germany



# **Webanwendungen mit Javascript**

Stephan Mandler

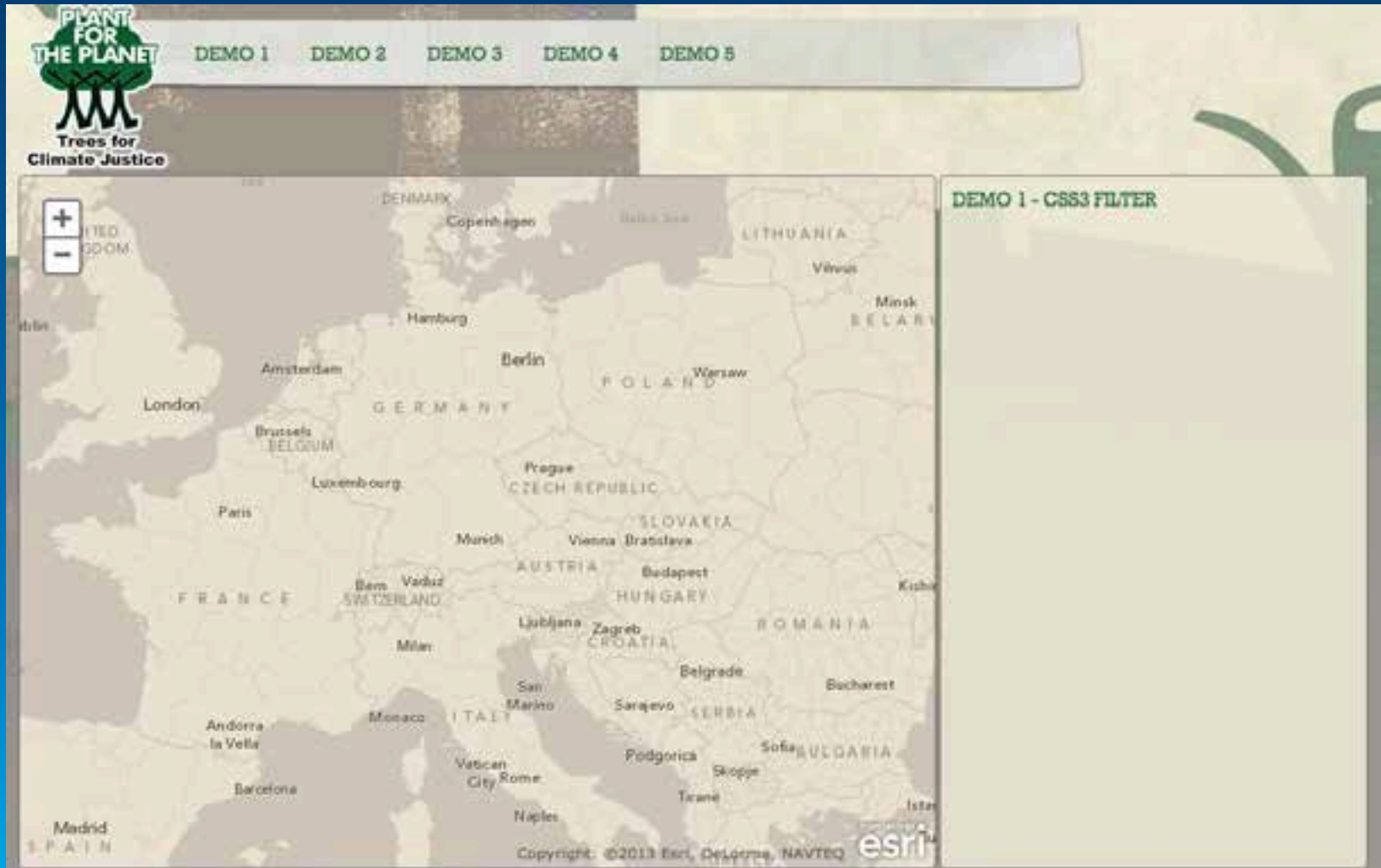
Axel Schaefer



# Agenda

- CSS3 Filter
- WebMaps von ArcGIS Online laden
- FeatureCollections
- FeatureLayer
- Freies Zeichnen von Grafiken

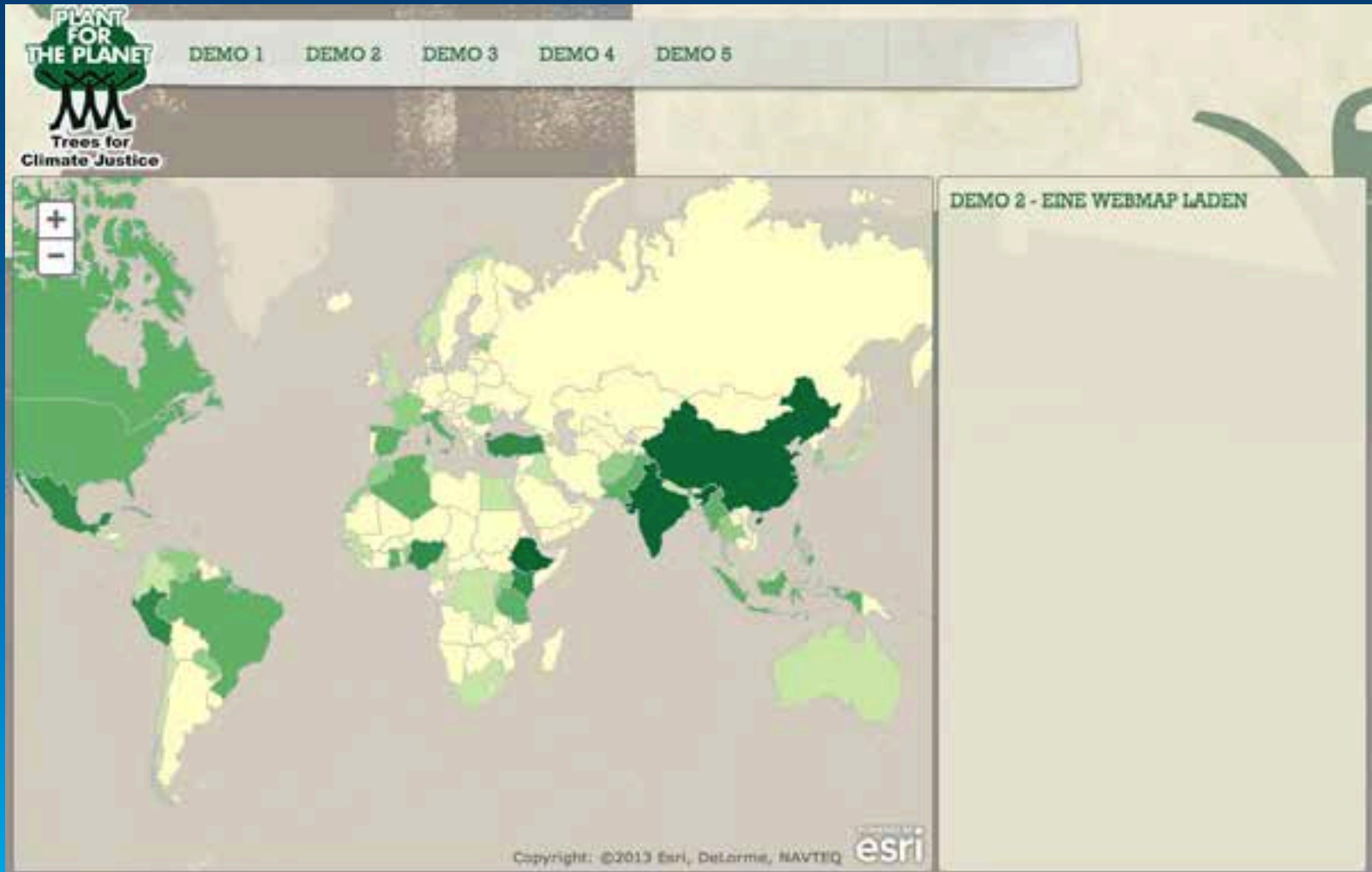
# Demo 1: CSS3 Filter



# CSS3 Filter

- hue-rotate, grayscale, sepia, blur, brightness, contrast, invert, saturate
- [Say Hello to CSS3 Filters](#)
- [CSS Filters and your ESRI Tiles](#)
  
- werden nur von WebKit-Browsern unterstützt
- [CanIUse.com](#)

# Demo 2: Eine WebMap laden



# Eine WebMap laden

## + Vorteil:

- Gestaltung der Karte komfortabel auf ArcGIS.com (Farben, Popups, Legenden ...)
- Eigene Daten (z.B. Shapefiles, GPX ...) können geladen werden

## - Nachteil:

- Änderungen müssen immer auf ArcGIS.com vorgenommen werden

# Demo 3: FeatureCollection

**PLANT FOR THE PLANET**  
Trees for Climate Justice

DEMO 1 DEMO 2 DEMO 3 DEMO 4 DEMO 5

**DEMO 3 - FEATURECOLLECTION**

Afghanistan, Albania, Algeria, Andorra, Angola, Antigua and Barbuda, Argentina, Armenia, Australia, Austria, Azerbaijan, Bahamas, Bahrain, Bangladesh, Barbados, Belarus, Belgium, Belize, Benin, Bhutan, Bolivia, Bosnia and Herzegovina, Botswana, Brazil, Brunei Darussalam, Bulgaria, Burkina Faso, Burundi, Cambodia, Cameroon, Canada, Cape Verde, Central African Republic, Chad, Chile, China, Colombia, Comoros, Costa Rica, Croatia, Cuba, Cyprus, Czech Republic, Côte d'Ivoire, Dem. Rep. Korea, Democratic Republic of the Congo, Denmark, Djibouti, Dominica, Dominican Republic, Ecuador, Egypt, El Salvador, Equatorial Guinea, Eritrea, Estonia, Ethiopia, Federated States of Micronesia, Fiji, Finland, France, Gabon, Georgia, Germany, Ghana, Greece, Grenada, Guatemala, Guinea, Guinea-Bissau, Guyana, Haiti, Honduras, Hungary, Iceland, India, Indonesia, Iran, Iraq, Ireland, Israel, Italy, Jamaica, Japan, Jordan, Kazakhstan, Kenya, Kiribati, Kuwait, Kyrgyzstan, Lao PDR, Latvia, Lebanon, Lesotho, Liberia, Libya, Liechtenstein, Lithuania, Luxembourg, Macedonia, Madagascar, Malawi, Malaysia, Maldives, Mali, Malta, Marshall Islands, Mauritania, Mauritius, Mexico, Moldova, Monaco, Mongolia, Montenegro, Morocco, Mozambique, Myanmar, Namibia, Nauru, Nepal, Netherlands, New Zealand, Nicaragua, Niger, Nigeria, Norway, Oman, Pakistan, Palau, Palestine, Panama, Papua New Guinea, Paraguay, Peru, Philippines, Poland, Portugal, Qatar, Republic of Korea, Romania, Russian Federation, Rwanda, Saint Kitts and Nevis, Saint Lucia, Saint Vincent and the Grenadines, Samoa, San Marino, Saudi Arabia, Senegal, Serbia, Seychelles, Sierra Leone, Singapore, Slovakia, Slovenia, Solomon Islands, Somalia, South Africa, South Sudan, Spain, Sri Lanka, Sudan, Suriname, Swaziland, Sweden, Switzerland, Syria, São Tomé and Príncipe, Tajikistan, Tanzania, Thailand, The Gambia, Timor-Leste, Togo, Trinidad and Tobago, Tunisia, Turkey, Turkmenistan, Tuvalu, Uganda, Ukraine, United Arab Emirates, United Kingdom, United States, Uruguay, Uzbekistan, Vanuatu, Venezuela, Vietnam, Yemen, Zambia, Zimbabwe

esri

# FeatureCollections

## + Vorteil:

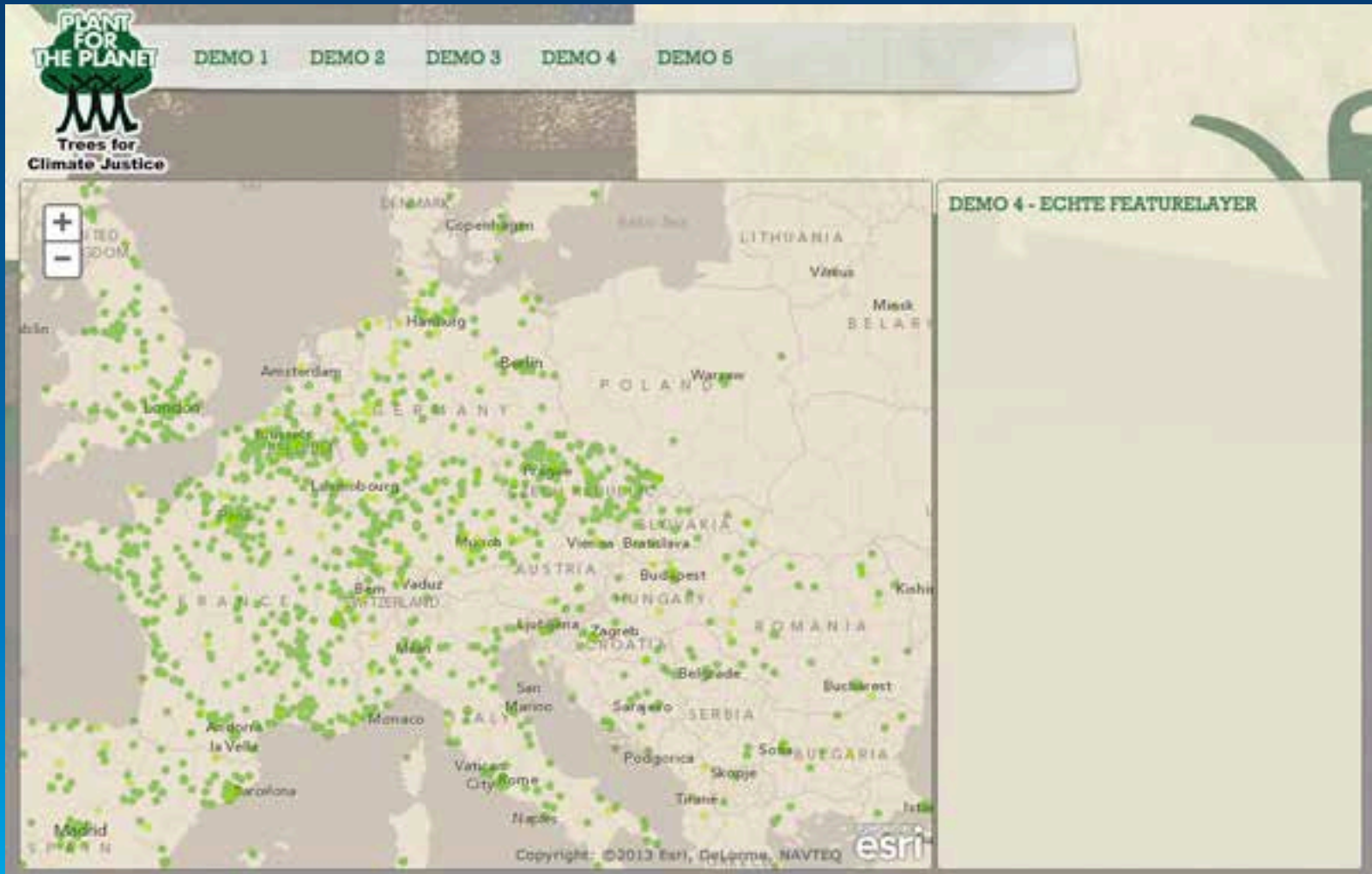
- Geometrien und Attribute aus beliebigen Quellen
- verhält sich in vielen Teilen identisch zum FeatureLayer (Query, Graphic, Attribute ...)

## - Nachteil:

- verhalten sich wie ein FeatureLayer im SNAPSHOT-Mode (alle Objekte müssen geladen werden wie sie sind).



# Demo 4: FeatureLayer



# FeatureLayer

## + Vorteil:

- verschiedene Modi (Snapshot, OnDemand\*, Selection)
- \*Geometrien werden automatisch vereinfacht
- \*werden gekachelt
- \*werden im Browser gecacht

## - Nachteil:

- ArcGIS Online Subskription oder ArcGIS for Server

# Demo 5: Grafiken

The screenshot shows the 'Plant for the Planet' website interface. At the top left is the logo 'PLANT FOR THE PLANET' with a tree icon and the text 'Trees for Climate Justice'. A navigation bar contains links for DEMO 1, DEMO 2, DEMO 3, DEMO 4, and DEMO 5. The main content area features a world map with a green overlay on the left side and a list of countries on the right. A pencil icon is positioned over the map, pointing to the list. The list is titled 'DEMO 5 - ZEICHNEN VON GRAFIKEN' and contains a long list of country names. The Esri logo is visible in the bottom right corner of the map area.

**DEMO 5 - ZEICHNEN VON GRAFIKEN**

Afghanistan Angola Albania Andorra United Arab Emirates  
Argentina Armenia Antigua and Barbuda Australia Austria  
Azerbaijan Burundi Belgium Benin Burkina Faso Bangladesh  
Bulgaria Bahrain Bahamas Bosnia and Herzegovina Belarus  
Belize Bolivia Brazil Barbados Brunei Darussalam Bhutan  
Botswana Central African Republic Canada Switzerland Chile  
China Côte d'Ivoire Cameroon  
Democratic Republic of the Congo Colombia Comoros  
Cape Verde Costa Rica Cuba Cyprus Czech Republic  
Germany Djibouti Dominica Denmark Dominican Republic  
Algeria Ecuador Egypt Greece Spain Estonia Ethiopia Finland  
Fiji France Federated States of Micronesia Gabon  
United Kingdom Georgia Ghana Guinea The Gambia  
Guinea-Bissau Equatorial Guinea Greece Grenada  
Guatemala Guyana Honduras Croatia Haiti Hungary  
Indonesia India Ireland Iran Iraq Iceland Israel Italy Jamaica  
Jordan Japan Kazakhstan Kenya Kyrgyzstan Cambodia  
Kiribati Saint Kitts and Nevis Republic of Korea Kuwait  
Lebanon Liberia Libya Saint Lucia Liechtenstein  
Sri Lanka Lesotho Lithuania Luxembourg Latvia Morocco  
Macao Moldova Madagascar Maldives Mexico  
Marshall Islands Macedonia Mali Malta Myanmar Montenegro  
Mongolia Mozambique Mauritania Mauritius Malawi Malaysia  
Namibia Niger Nigeria Nicaragua Netherlands Norway Nepal  
New Zealand Oman Pakistan Panama Peru Philippines  
Palau Papua New Guinea Poland Dem. Rep. Korea Portugal  
Paraguay Palestine Qatar Romania Russian Federation  
Rwanda Saudi Arabia Sudan South Sudan Senegal  
Singapore Solomon Islands Sierra Leone El Salvador  
San Marino Somalia Serbia São Tomé and Príncipe  
Suriname Slovakia Slovenia Sweden Swaziland Seychelles  
Syria Chad Togo Thailand Tajikistan Turkmenistan  
Timor-Leste Trinidad and Tobago Tunisia Turkey Tuvalu  
Tanzania Uganda Ukraine Uruguay United States Uzbekistan



**Vielen Dank für Ihre Aufmerksamkeit!**

**<http://github.com/thinkmaps>**