

Deploying Mobile Solutions| Agenda

- Quick Overview on Strategy
- Walk thru of Mobile Apps
- Deploying Mobile Apps

ArcGIS Apps

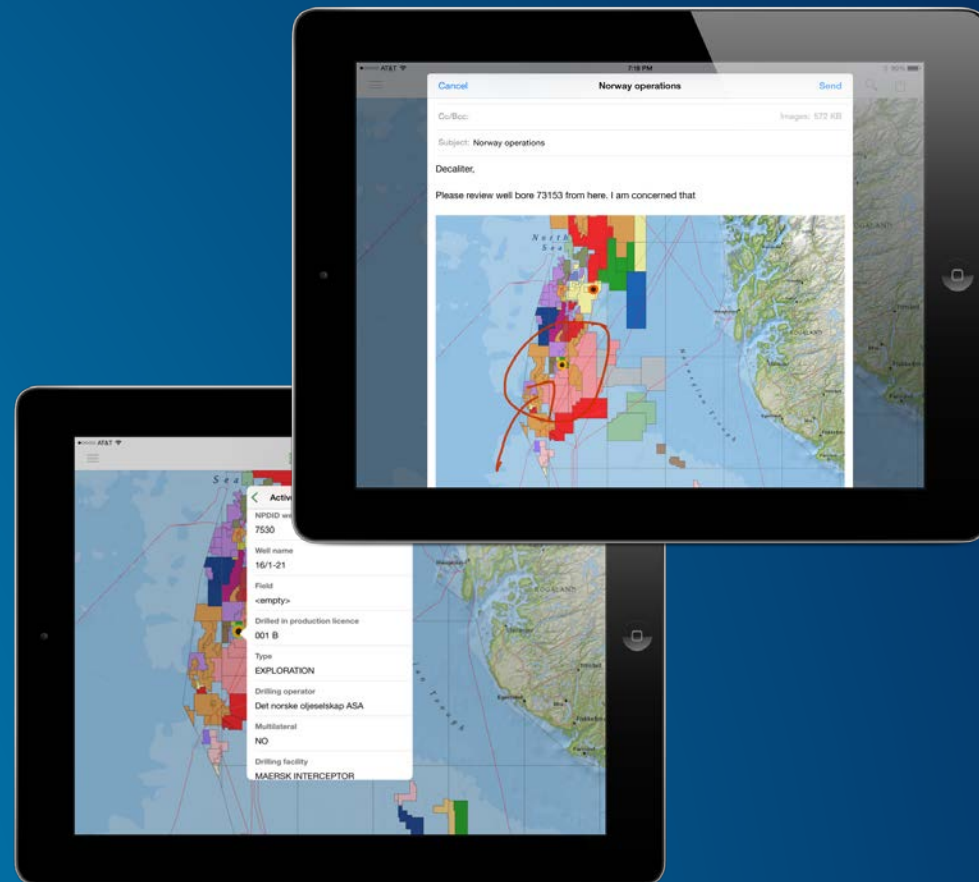
- ▶ Making mapping and location aware apps available across your organization





Explorer for ArcGIS

- The ArcGIS platform icebreaker
- Discover, Use and Share maps
- Personalize your ArcGIS experience
- What's Coming Next:
 - Work offline





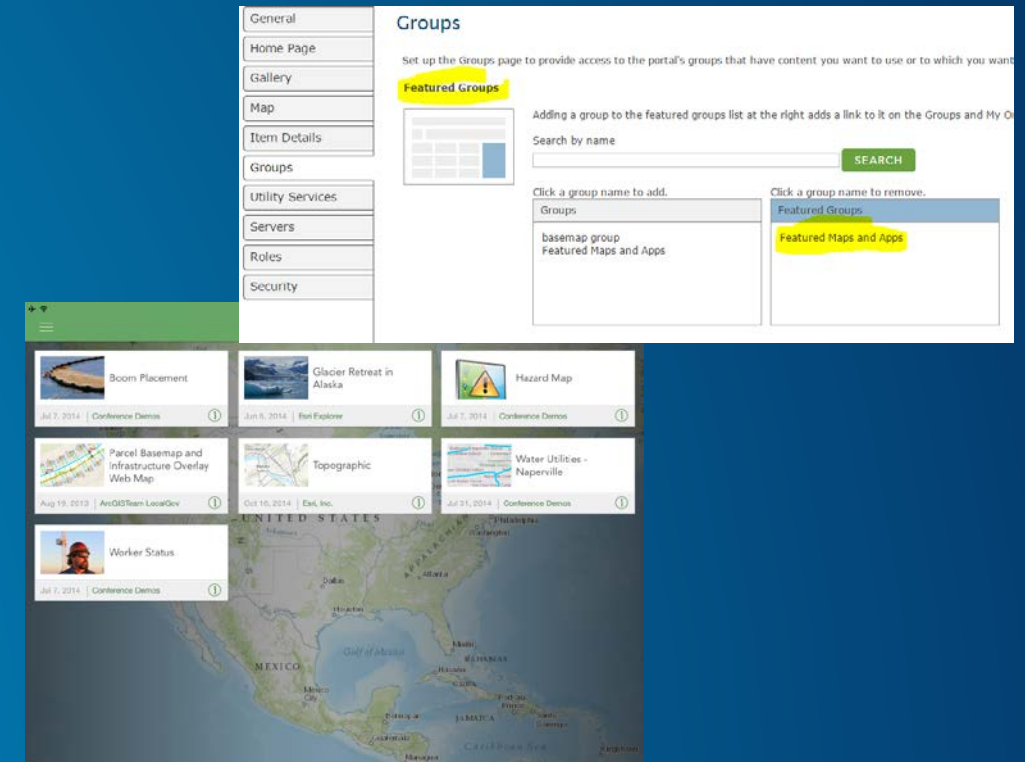
Explorer things to know

Leverage your Portal

- Populate featured content
- Customize the basemap gallery
- Set a default basemap
- Identity (username@domainname)

Personalize your experience

- Add Favorites
- Search
- Use My Places and Bookmarks
- Share maps within the app



Demo



Collector for ArcGIS

- Maps in the hands of your field workforce
- Map and inspect assets
- Capture photos and videos
- What's Coming Next:
 - Windows 10
 - High Accuracy GNSS data collection...



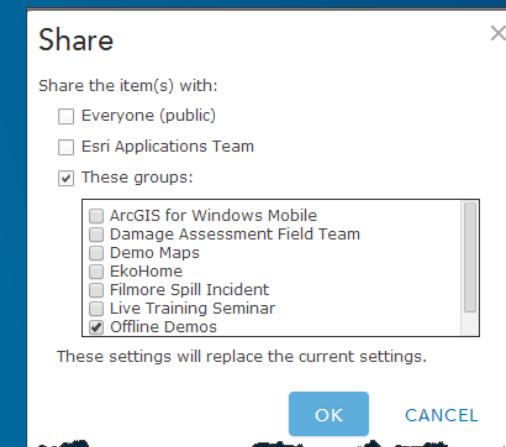
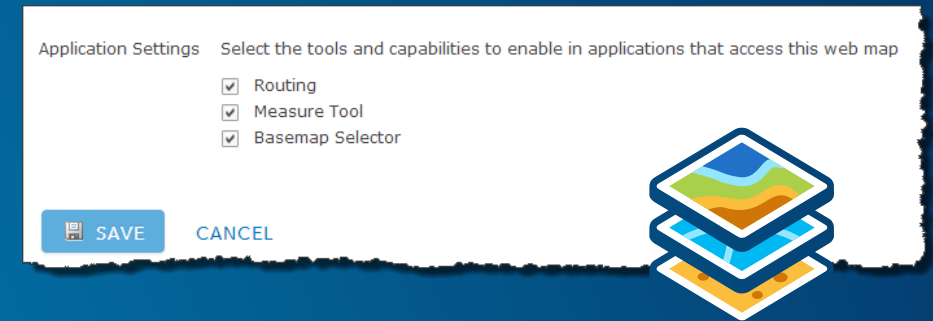
Deploying Mobile Solutions| Collector uses Web Maps

- **Collector uses maps that include:**

- Layers from 1+ feature services (editable)
- Location Tracking layer (optional)
- Basemap
- Application settings

- **Share Maps to field workers using Groups:**

- Create Named Users for each field worker
- Invite field workers to groups
- Share maps into groups



Deploying Mobile Solutions| Feature Layers and Templates

- **Supported Types**
 - ArcGIS Online (Hosted)
 - ArcGIS Server (On Premise)
- **Supported Operations:**
 - Editing options
 - Sync***
- **Popups and fields**
 - Define the form experience in Collector
 - Take advantage of Geodatabase capabilities
 - Feature Templates
 - Field validation
 - Editor tracking

Editing

- ☒ Enable editing and allow editors to:
 - ☒ Add, update, and delete features
 - ☐ Update feature attributes only
 - ☐ Add features only
- Export Data** ☐ Allow others to export to different formats.
- Sync** ☒ Enable Sync (disconnected editing with synchronization).
- Track Edits** ☐ Keep track of who created and last updated features.
 - ☐ Editors can only update and delete the features they add.

Configure Attributes

Check the fields you want to display. Select a field to change its alias, order it, and format it.

Display	Field Name	Field Alias
<input type="checkbox"/>	{OBJECTID}	OBJECTID
<input checked="" type="checkbox"/>	{REPRESENT}	Owner / Occupant
<input checked="" type="checkbox"/>	{PRIMRES}	Primary Residence
<input checked="" type="checkbox"/>	{HABITABLE}	Habitable
<input checked="" type="checkbox"/>	{NUMOCCUP}	Number of Occupants
<input checked="" type="checkbox"/>	{STRINSUR}	Structure Insured
<input checked="" type="checkbox"/>	{EARINSUR}	Earthquake Coverage
<input checked="" type="checkbox"/>	{FLOODINSUR}	Flood Coverage

Create Features

Damage to Residential Buildings

☒ Affected ☐ Destroyed
☐ Inaccessible ☒ Major
☐ Minor

Field Name	Data Type
SHAPE	Geometry
REPRESENT	Text
PRIMRES	Text
HABITABLE	Text
NUMOCCUP	Long Integer
STRINSUR	Text
EARINSUR	Text
FLOODINSUR	Text
FIREINSUR	Text
DEDUCT	Double
PREDISVAL	Double
STRLOSS	Double
TYPDAMAGE	Text

Click any field to see its properties.

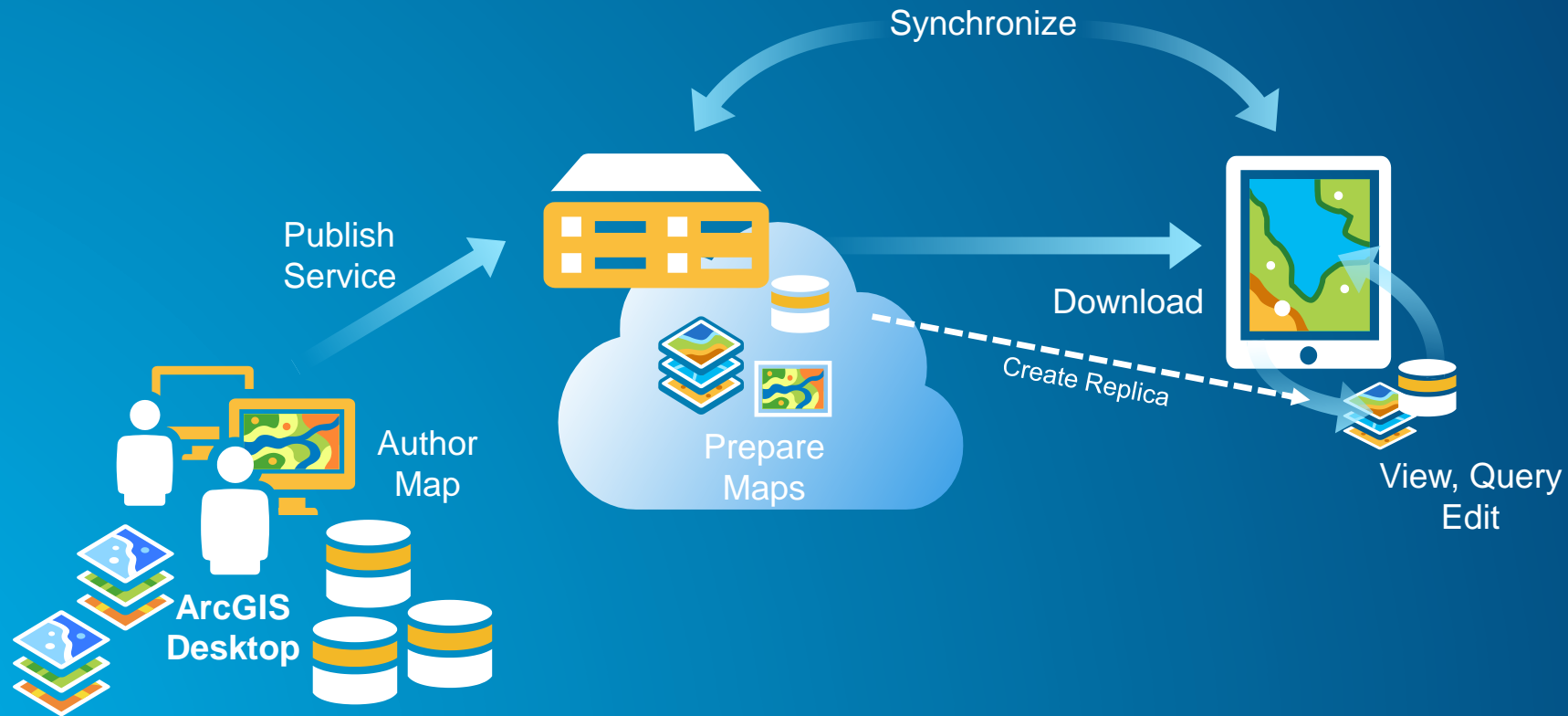
Field Properties

Field Properties	Extent of Damage
Alias	
Allow NULL values	Yes
Default Value	
Domain	daDegreeDamage
Length	20

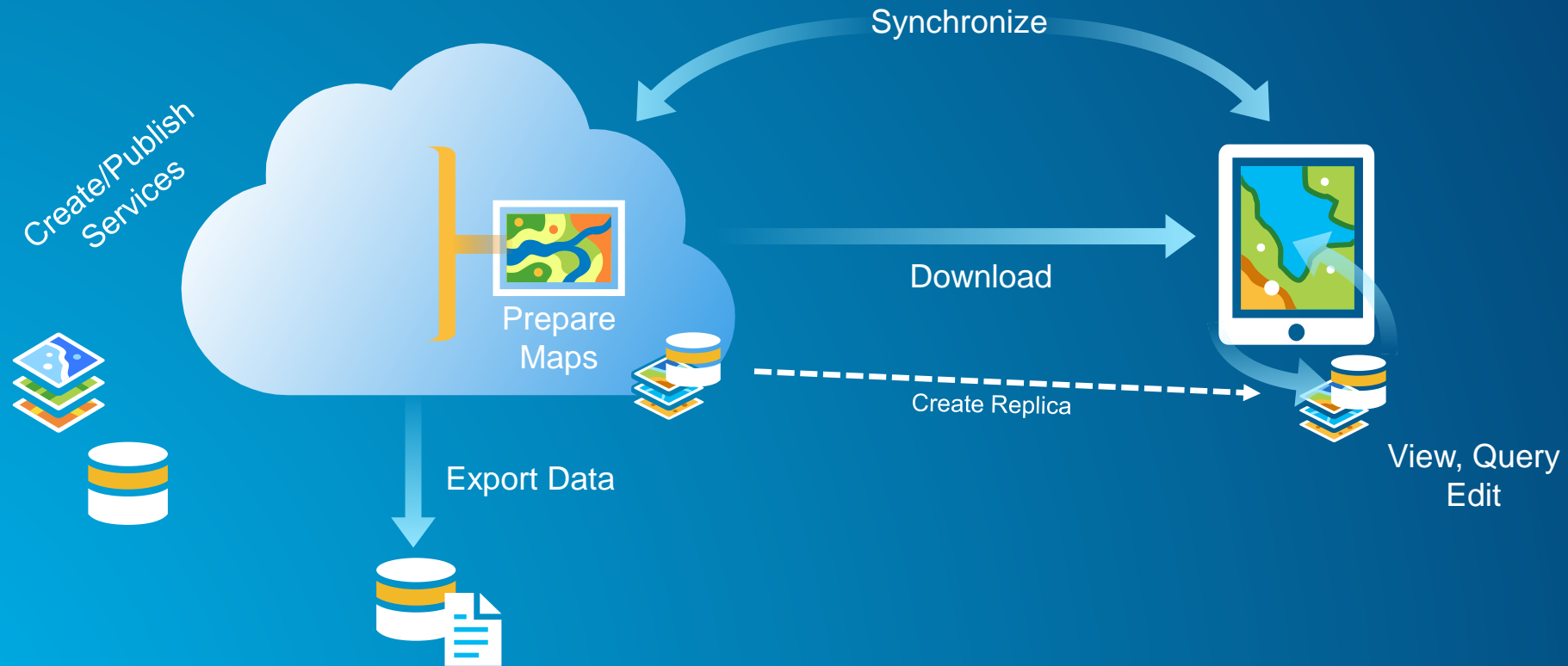
Import...

To add a new field, type the name into an empty row in the Field Name column, click in the Data Type column to choose the data type, then edit the Field Properties.

Deploying Mobile Solutions| Synchronization Workflows (Referenced)



Synchronization Workflows (Managed)

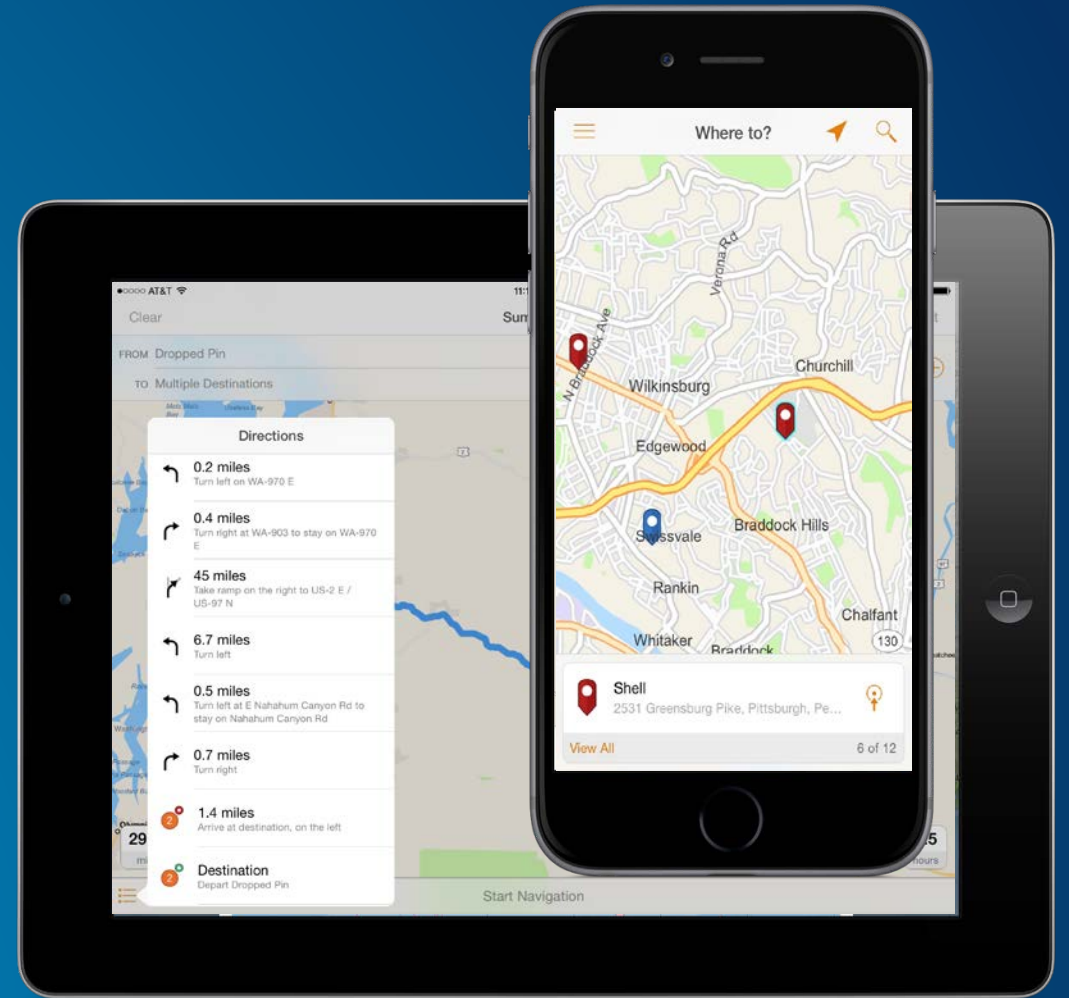


Demo



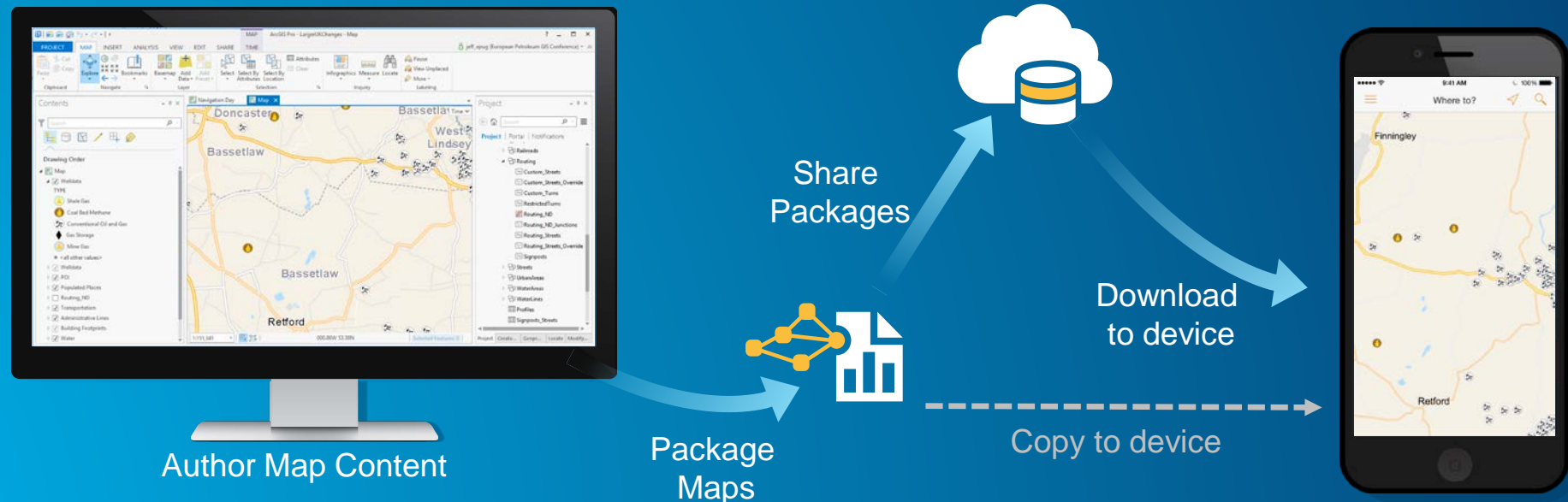
Navigator for ArcGIS

- Fully Offline routing
- Turn-by-turn directions
- Address/Place/Coordinate search
- Voice guidance
- Remotely controlled
- What's Coming Next:
 - Create your own maps and build your own routes!
 - Android platform



Deploying Mobile Solutions| Custom Data Workflows

- **What you can do:**
 - Clip extents to your working area
 - Add your own operational layers into the navigation map
 - Add your own locators to search for destinations
 - Add your own custom roads
 - Build your own network

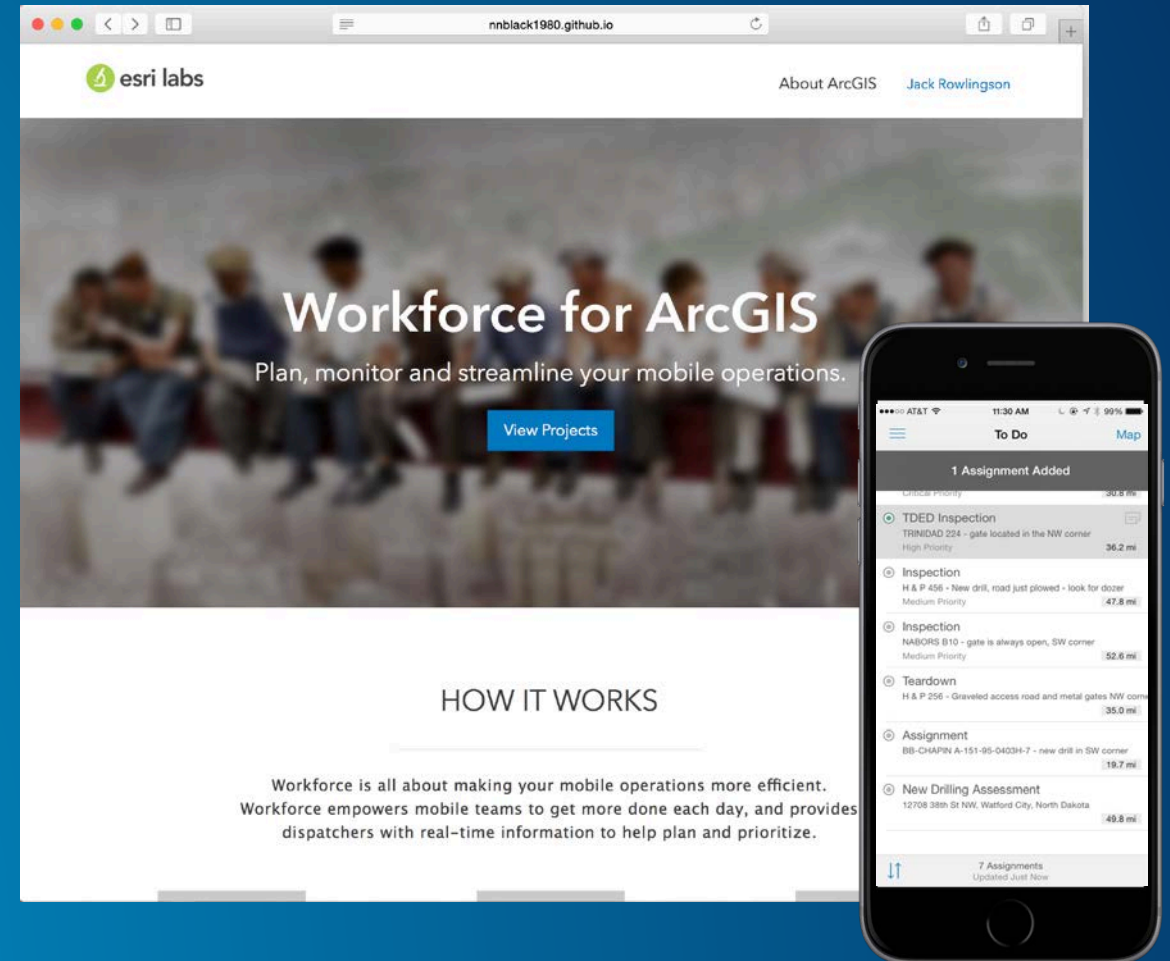


Demo



Workforce for ArcGIS

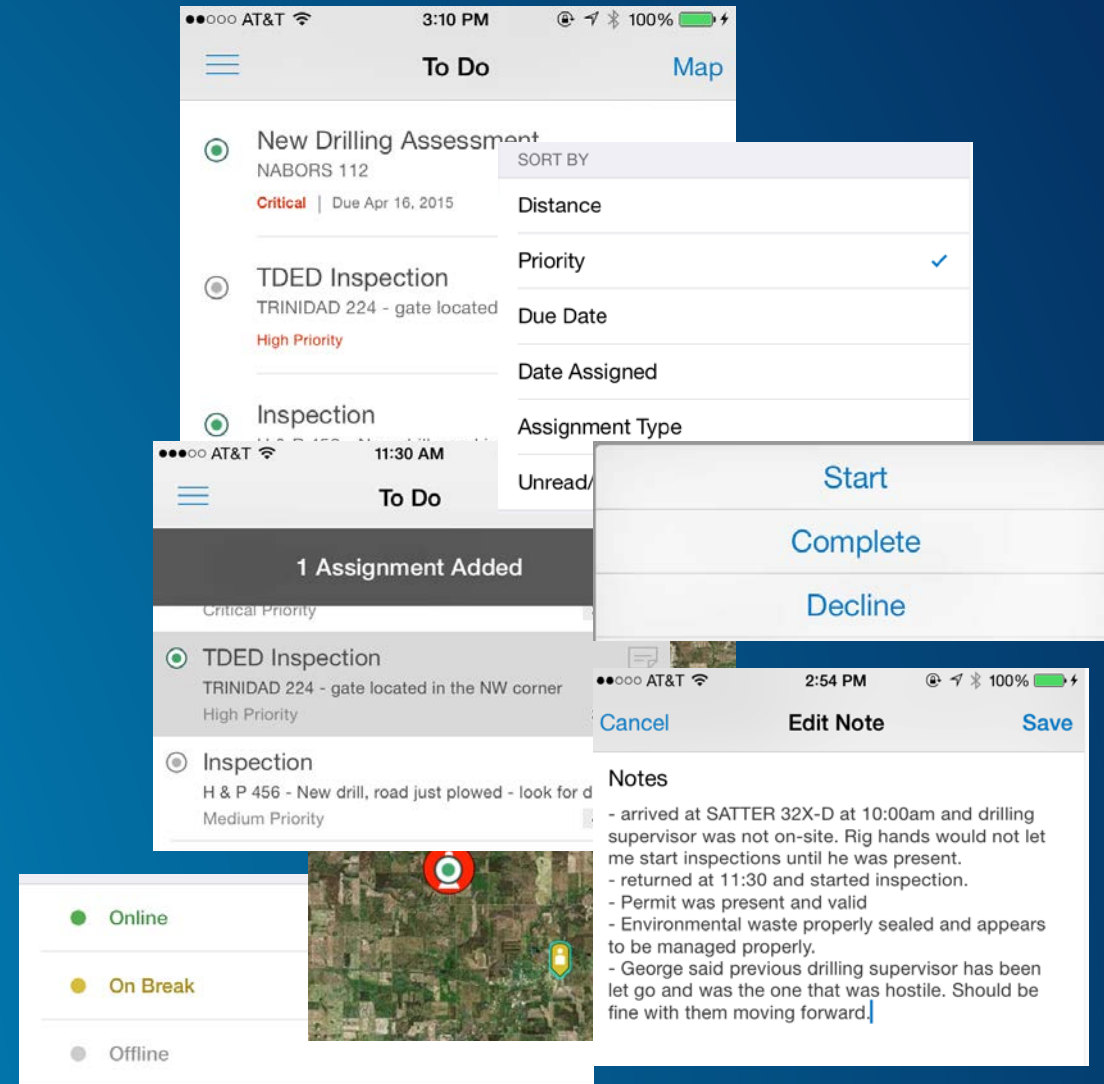
- Field workforce optimization
- Efficiently plan and assign work
- Receive assignments and report status from the field
- Beta coming soon!





Workforce for ArcGIS

- View and complete work assignments
- Organize your work list based upon what is important to you
- Receive notifications when new assignments come in
- Set your working status so others know when and where you are working
- Add and edit notes
- View reference information attached to the work you do





Workforce for ArcGIS

- Create new work assignments
- Assign work to your field teams
- Know who is working where and what they are doing

Create an Assignment

Assignment Type *

Construction Staking

Location *

403 13th St, San Diego, California, 92101

Search for an address or click on the map to specify the location.

Assigned to

Not assigned

Priority

Critical

Due

08/27/2015

Description

New development project underway. Need to assess construction staking work from our contractor and make sure it is up to code.

Create Assignment

Cancel

Assign

Filters

Type, location

Filter workers

ONLINE

Brent Pierce

4

Jeff Shaner

8

Joe Morocco

7

ON BREAK

Emily Gibson

0

Heather McCracken

0

Mark Bockenbauer

0

Tom Bruns

0

OFFLINE

Pierce

on Inspector

4

Working

Ilgrass

g Engineer

4

Offline

orgenthaler

on Inspector

0

Offline

bson

r Supervisor

0

On Break

Heather McCracken

Construction Inspector

0

On Break

Jeff Jackson

Wastewater Engineer

0

Offline

Jeff Shaner

Construction Inspector

8

Working

Joe Morocco

Construction Inspector

7

Working




Workforce for ArcGIS

- Create new Workforce Projects
- Configure assignment types
- Add Field Workers


Projects

[Create Project](#)




Fuel Hydrant Inspections

June 23, 2015 • Administrator Craig Gillgrass




Curbstop Maintenance

June 4, 2015 • Administrator Craig Gillgrass




Inland Empire Call Before You Dig

May 7, 2015 • Administrator Craig Gillgrass




AEC Workforce

July 8, 2015 • Jeff Shaner



Census

June 22, 2015 • Administrator Craig Gillgrass



Drilling Inspections Workforce

March 31, 2015 • Jeff Shaner

Create a Project

Name *

Project Type

Empty Project

Choose a pre-configured project type to get up and running quickly.

Description (Optional)

This Workforce Project is designed to support management of One Call tickets within the East Valley Water District. Tickets are pulled from the Newton web service for assignment to field staff.

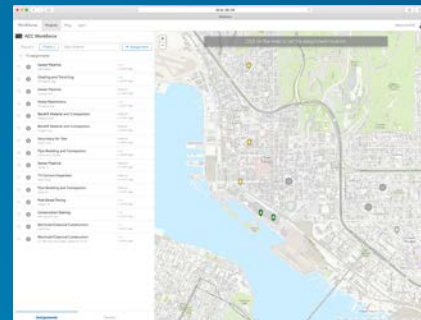
Give your project a description that describes what it will be used for.

[Cancel](#) [Create project](#)

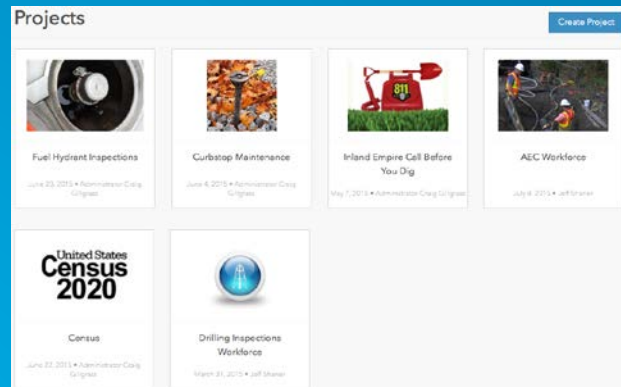


Workforce for ArcGIS

Dispatchers



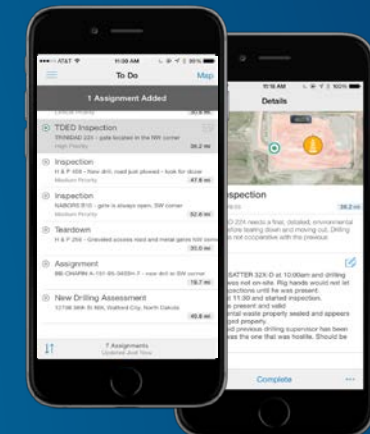
Projects



ArcGIS Administrator

Work assignments

Field Workers



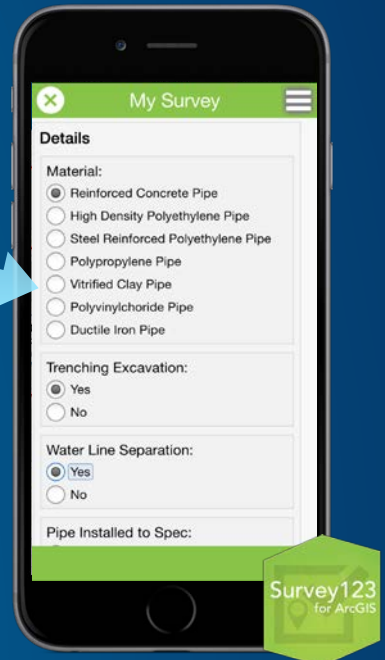
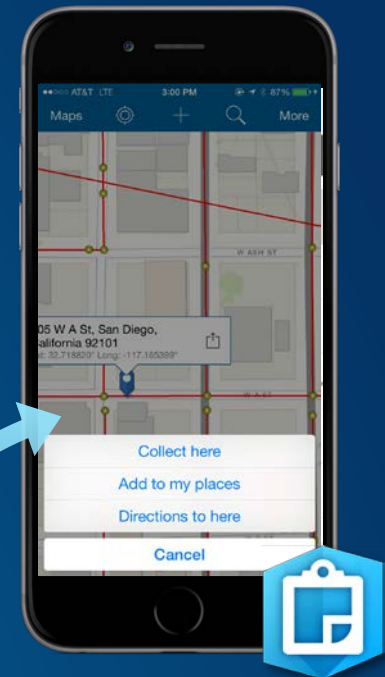
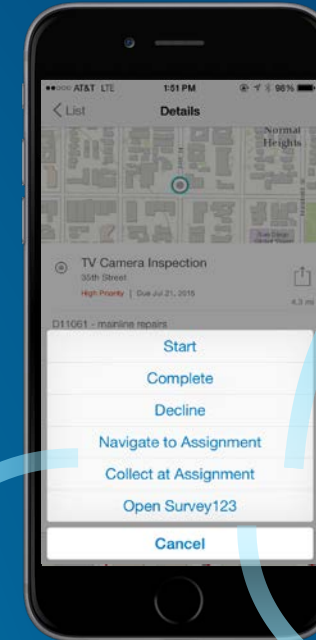
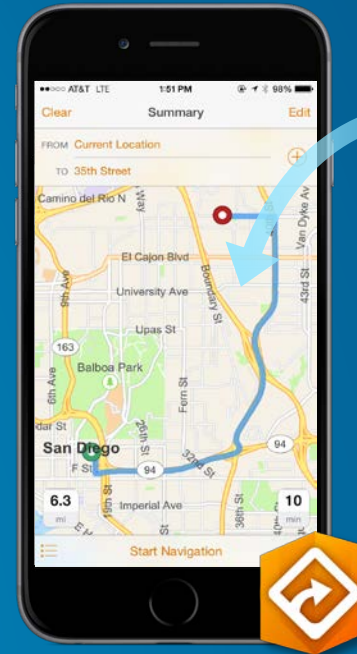
Working status





Workforce for ArcGIS

- Integrated with ArcGIS Apps so you can:
 - Get to the location of work assignments using Navigator for ArcGIS
 - Complete your work using:
 - Collector for ArcGIS
 - Survey123



Demo

Deploying Mobile Apps

- **Primary Approaches:**
 - App Store deployments direct to device
 - App Store deployments via MDM push
 - Custom app deployments via MDM

App Store Deployment to Device



App Stores



Devices

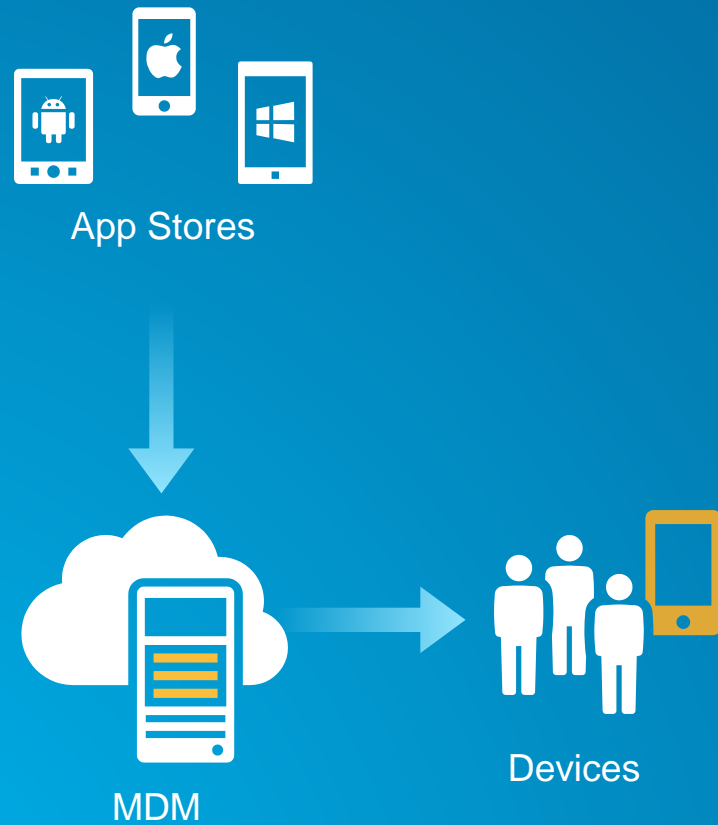
Benefits

- Always up to date with latest version

Cons

- Always up to date...
- Mixed versions in production
- Device-level VPN required

App Store Deployment via MDM



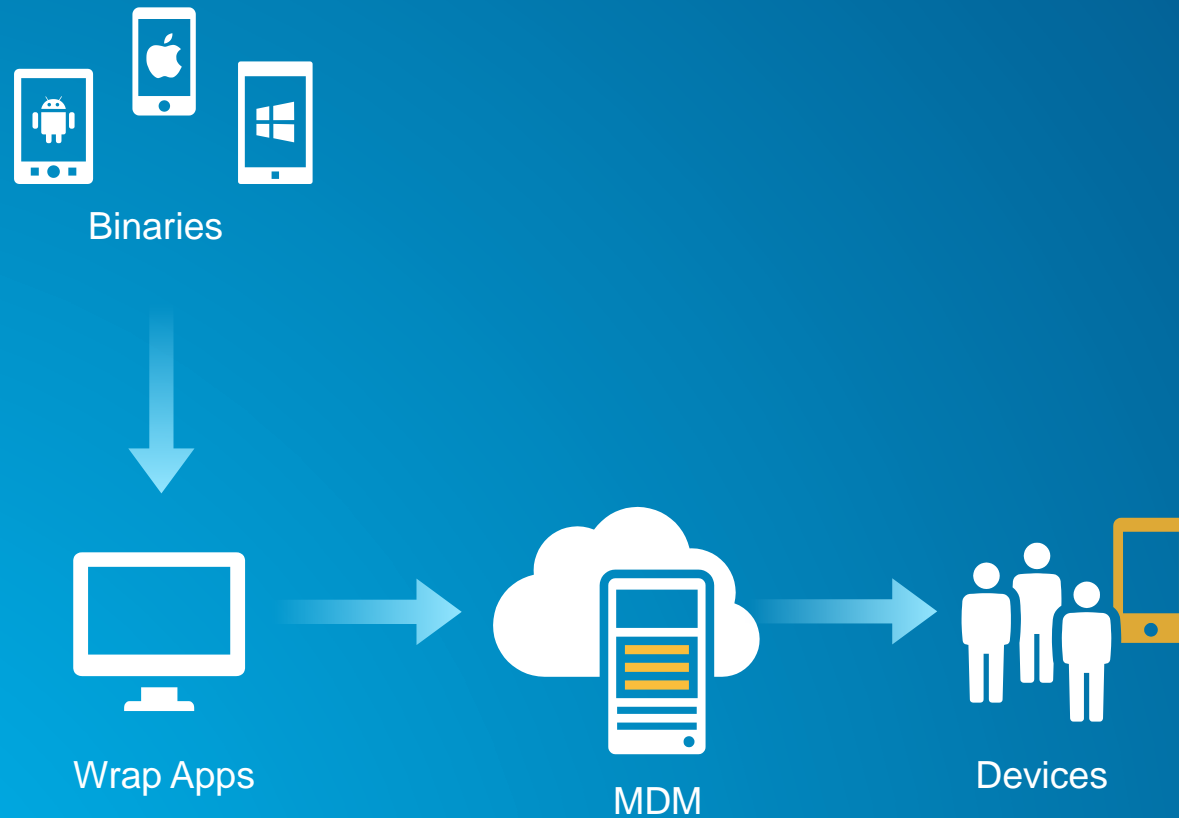
Benefits

- Controlled Distribution to Devices
- Volume Purchasing

Cons

- Difficult to stay in sync with updates
- Device level VPN required

App Wrapping using Binaries



Benefits

- Controlled Distribution to Devices
- App level VPN capability

Cons

- Difficult to stay in sync with updates
- Requires wrapping
- Requires binaries from Esri

Demo