

2014 Esri European User Conference, 15 Oct 2014

# GIS Concept for Pipelines – Field Report



ENGINEERING  
EXCELLENCE



Rupert Kellerbauer

# 2014 ESRI European User Conference GIS Concept for Pipelines – Field Report

## ■ ILF at a glance

- International, independent engineering and consulting firm (100% privately owned) - since 1967 - 1.800 employees – more than 30 offices worldwide – 4.500 successful projects – 2013 turnover: EUR 202,4 Millionen

### Oil & Gas



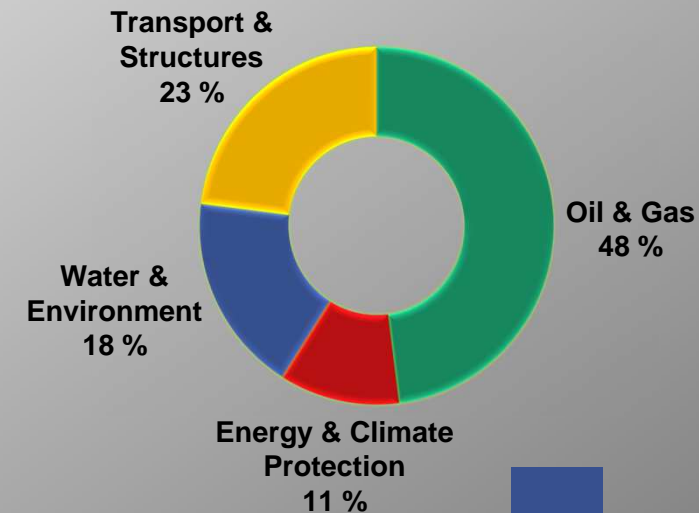
### Water & Environment



### Energy & Climate Protection

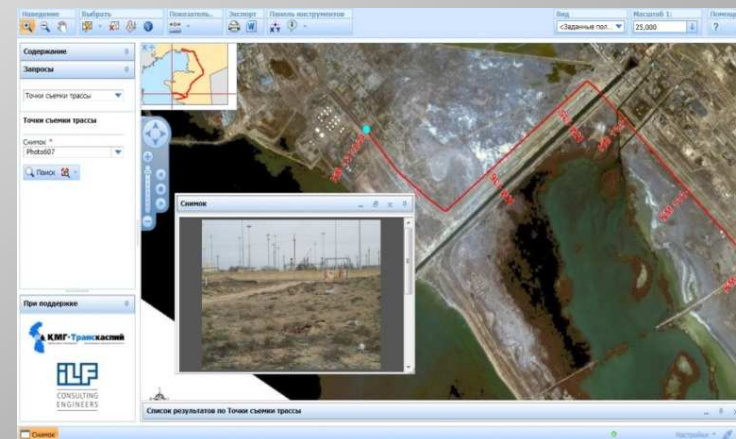
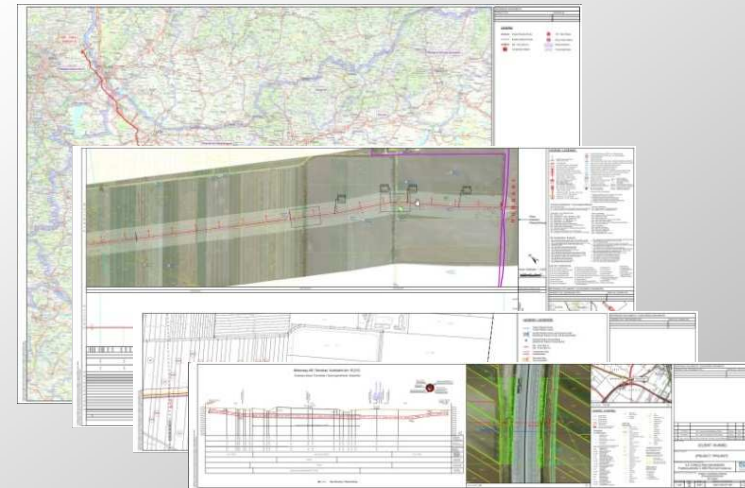
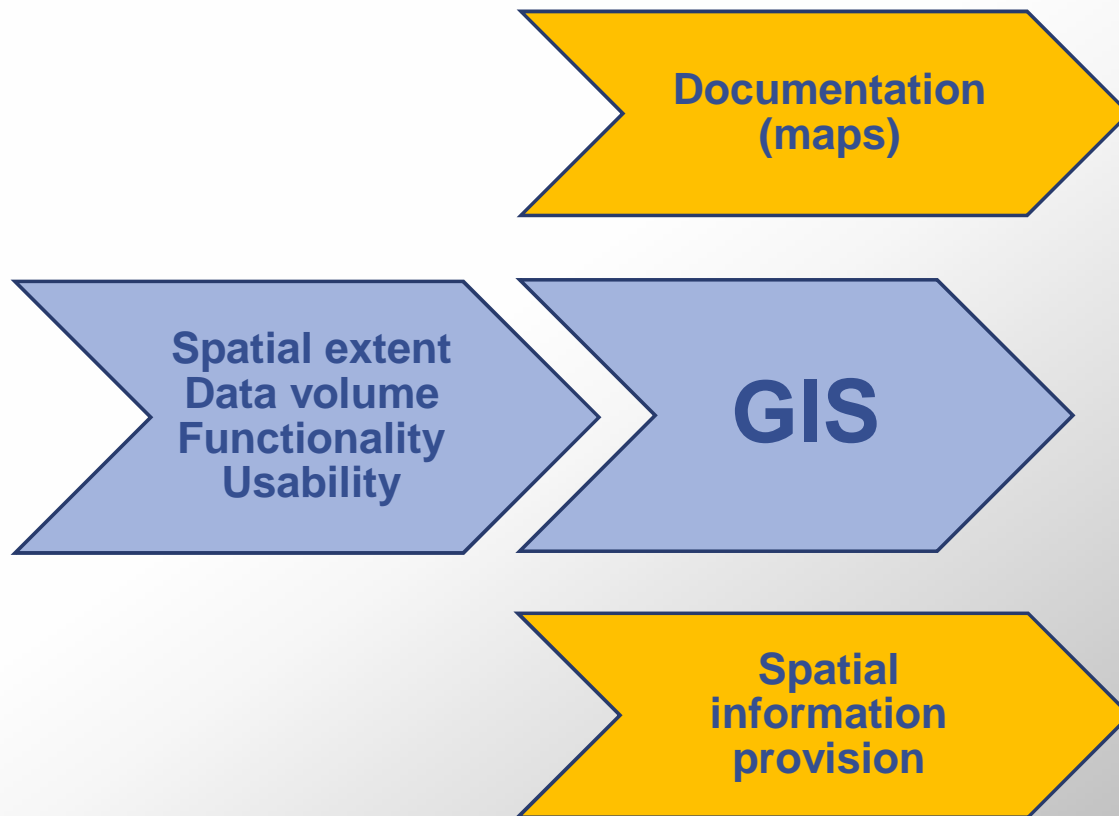


### Transport & Structures



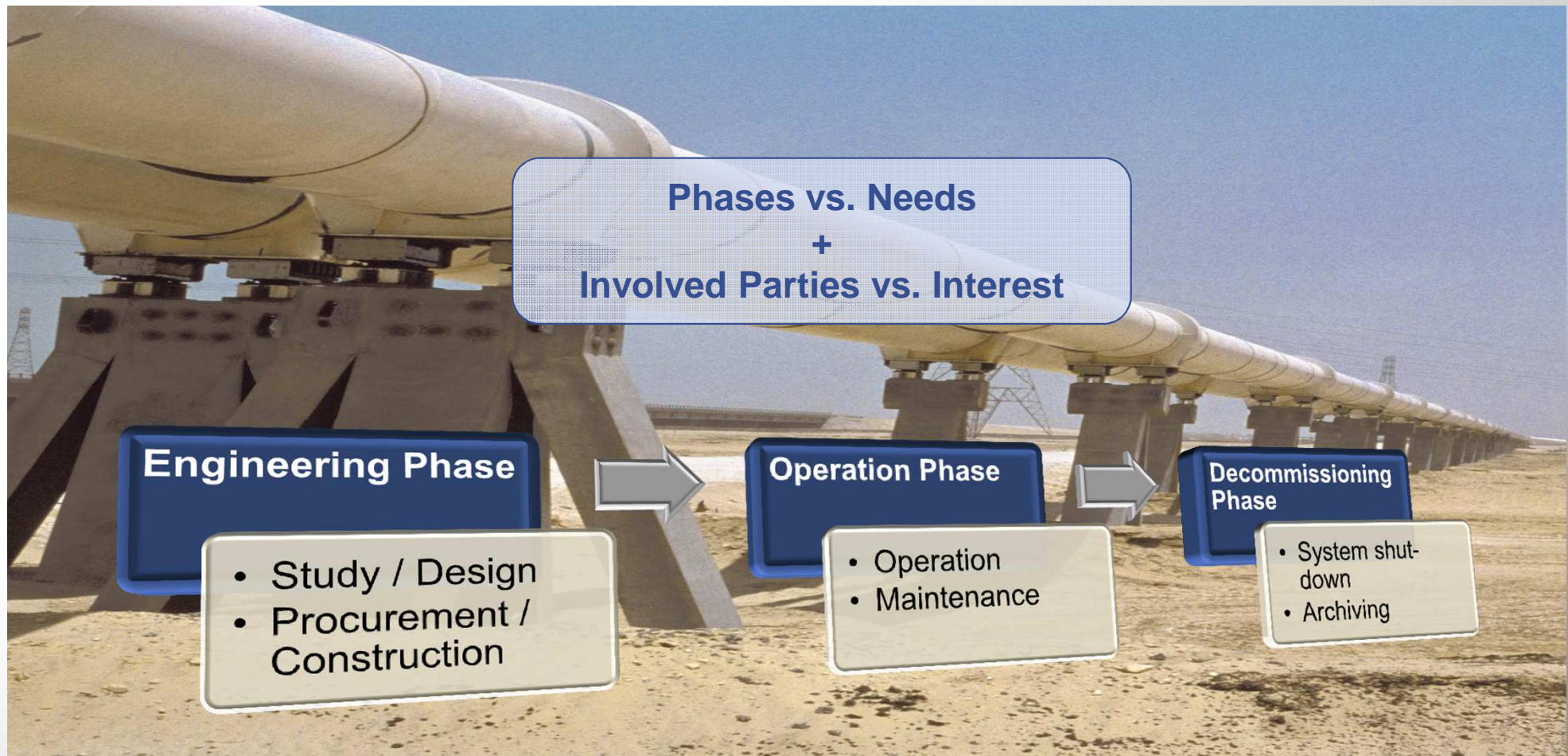
# 2014 ESRI European User Conference GIS Concept for Pipelines – Field Report

## ■ GIS in Pipeline Projects



# 2014 ESRI European User Conference GIS Concept for Pipelines – Field Report

## ■ Phases of Pipeline systems



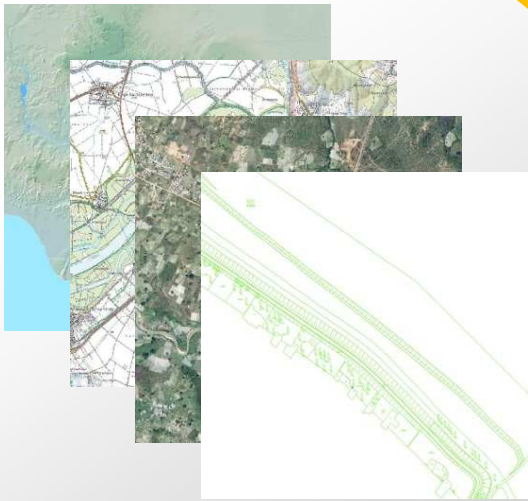
# 2014 ESRI European User Conference GIS Concept for Pipelines – Field Report

## ■ GIS components



Hardware

Software



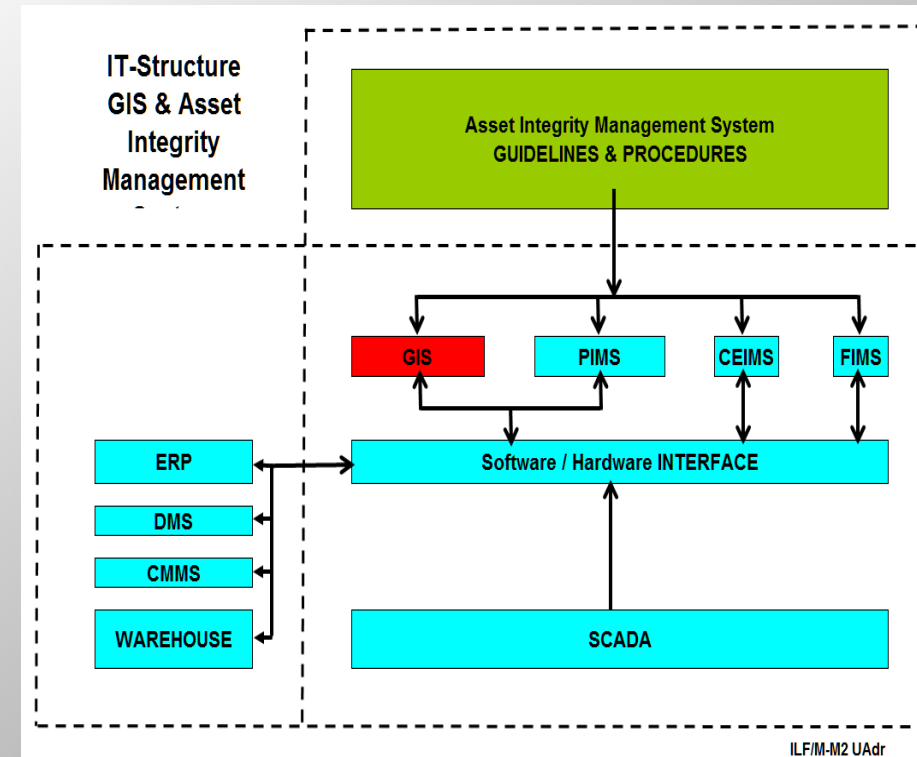
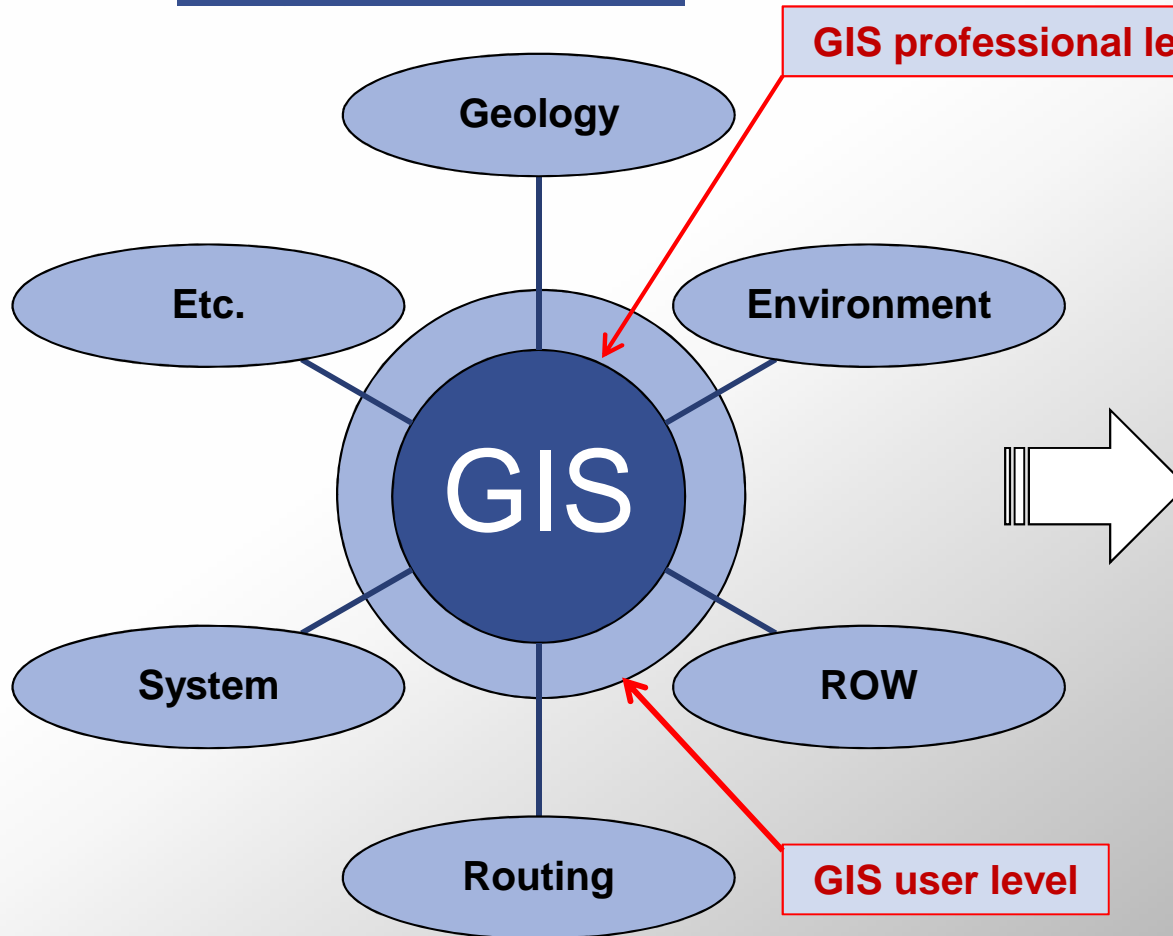
Geodata

Roles +  
descriptive  
Framework



# 2014 ESRI European User Conference GIS Concept for Pipelines – Field Report

## ■ Integrated Approach



ILFIM-M2 UAdr



# 2014 ESRI European User Conference GIS Concept for Pipelines – Field Report

## ■ Conclusion

- Integrated as serving discipline into multidisciplinary set up and systems
- Different phases, different requirements
- Top down approach
- Duration of the phases
- Reflect all components of GIS
- GIS should be used in all phases
- Main interest on GIS should have the operator of the pipeline



# 2014 ESRI European User Conference, Split 2014

Thank you!



ENGINEERING  
EXCELLENCE

