

ArcGIS for Utilities

Split, Oct 13 2014

Presenter: Chrystelle Ourzik (Esri Inc)





facebook®

Knowledge
Workers



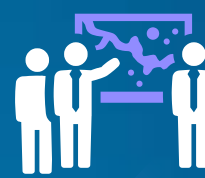
Executive
Access



Contractors



Public
Engagement



Work
Anywhere



Enterprise
Integration



Professional
GIS



ArcGIS

ArcGIS is a Platform

Making mapping and GIS available
across an organization



ArcGIS for Utilities and Telecommunications

Providing focused solutions and workflows for utilities and telecommunications

deployment method

data

best practices

Business Partners

open code

applications

developer community

In-house development

integrations

training

3rd party apps

Extended Support

Configurations

Deploying the Platform

How to get started?



Water



Electric



Telecommunications

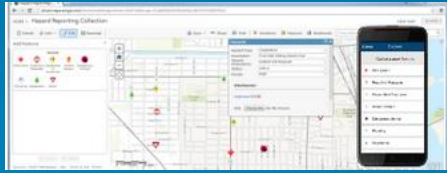


Gas

ArcGIS for Utilities & Telecommunications

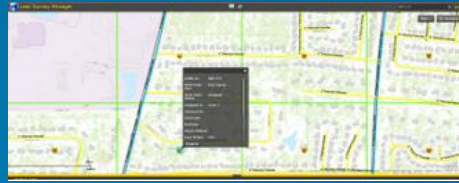
Jump starts your deployment

Employee Safety



Hazard Reporting

Compliance



Leak Survey Map

Revenue

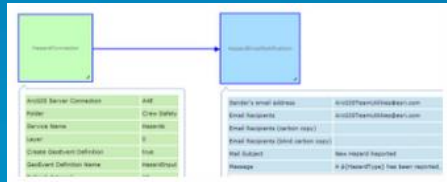


Service Availability

Customer Satisfaction



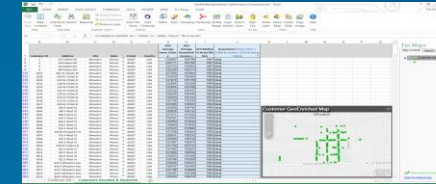
Outage Map



Hazard Notification



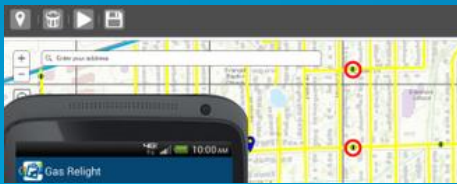
Compliance Dashboard



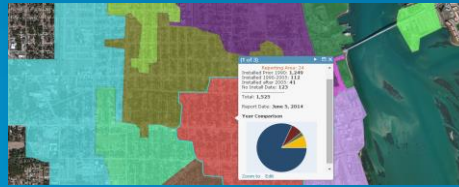
Upselling Analysis



Report Streetlight Issue



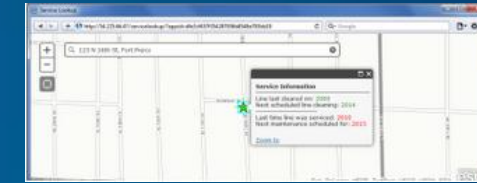
Emergency Response



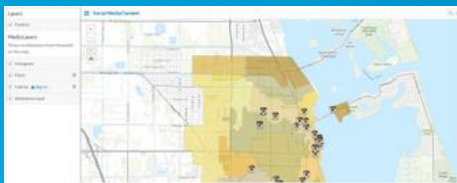
Pole Reporting



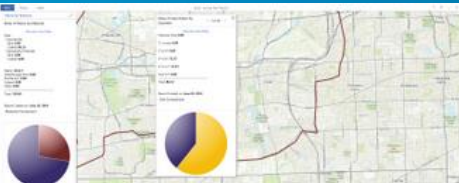
Potential Customers



System Improvement Map



Social Media Monitoring



DOT Reporting



Support Services



Relight Map

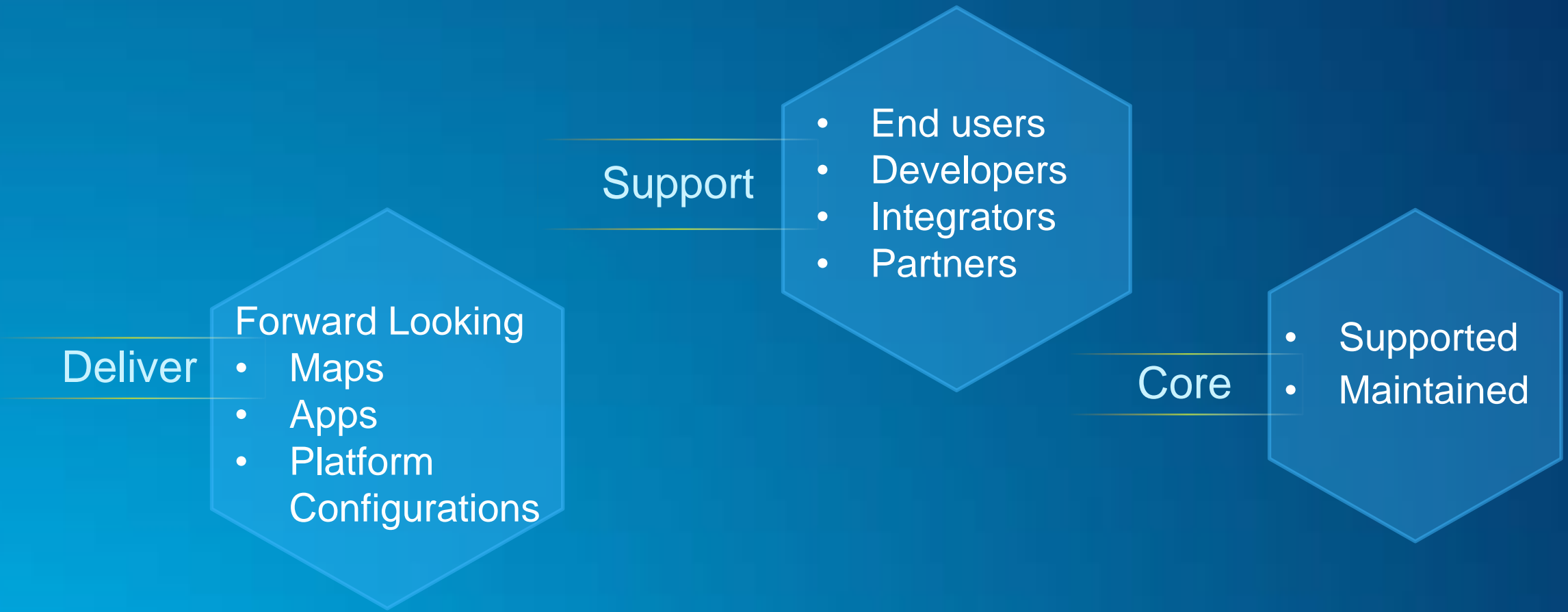
ArcGIS for Utilities & Telecommunications

Addressing key business objectives



ArcGIS Spatially Enables Utility Workflows

Infusing mapping, analysis, data management, and collaboration



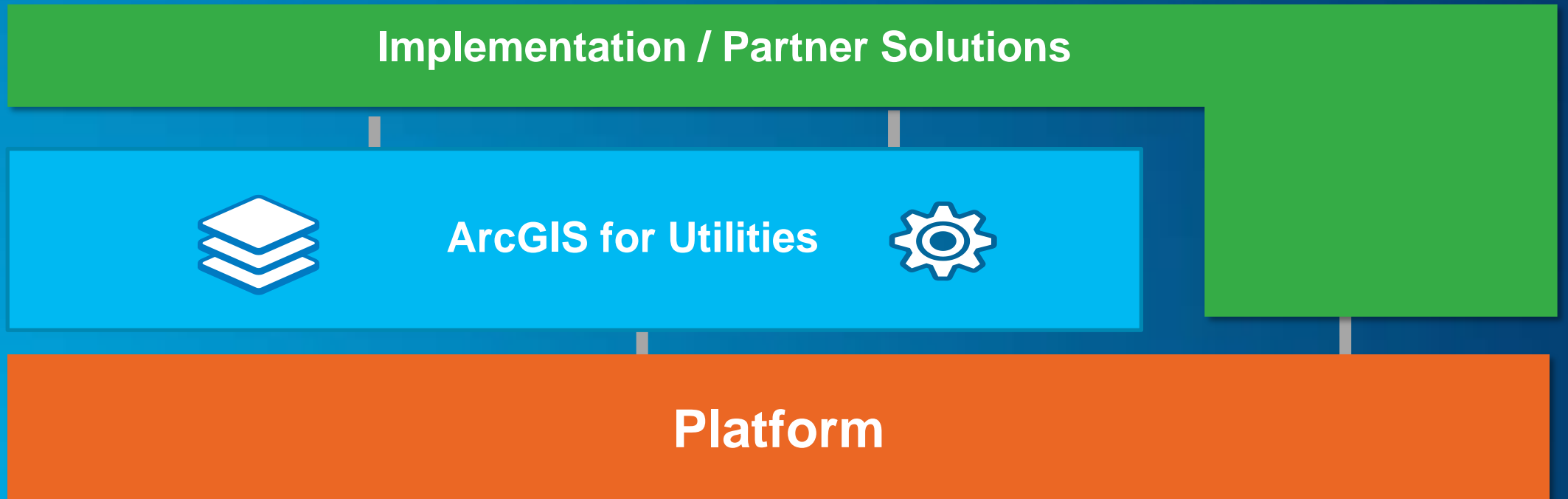
ArcGIS for Utilities

Attributes of the solution

- **Fully supported by Esri**
- **Continues to be developed**
- **Open sourced on Github**
- **Free download**

ArcGIS for Utilities

Configures the ArcGIS Platform for a electric distribution utility



Local Government



State Government



Public Gardens



Utilities and Telecommunications



Emergency Management



Military



Intelligence

ArcGIS Solution Templates

Areas of focus

Mapping Solution for Your Utility

A configuration of the ArcGIS Platform that quickly deploys maps and apps to solve specific business problems.

TAKE A TOUR

FOLLOW US



Get Started in Your Organization

Learn how ArcGIS for Water, Electric, and Gas can transform your use of GIS, help you increase efficiency, and improve customer relations.



Deploy Focused Maps and Apps

Browse a collection of maps and apps that can be configured for knowledge workers in your organization and the citizens you serve.



Join the Community

Connect with your peers, Esri partners, and the teams at Esri that are dedicated to help you increase the value of GIS in your organization.

Solution Site Overview

Access to maps and apps and tools.



Folders

- NEW DELETE
- ArcGISforGas (Home)
- As-Built Mapping
- Damage Assessment Collect
- DOT Reports
- Excavation Damages
- Exposed Pipe Collector
- Gas Asset Locator
- Gas Data Model
- Gas Facility Maps
- Gas Network Viewer
- Gas Relight App
- Gas Service Lookup
- Gas Utility Print Templates
- Gas Valve Finder
- Leak Survey Compliance Da:
- Leak Survey Manager
- Leak Survey Mobile Map
- Map Book Picker
- Map Change Request
- Map Notes
- Model Org
- Potential New Customers
- Upsell Analysis

Show

- All
- Maps
- Layers
- Apps
- Tools
- Files

+ Add Item Create Map Create Layer Share Delete Move Change Owner

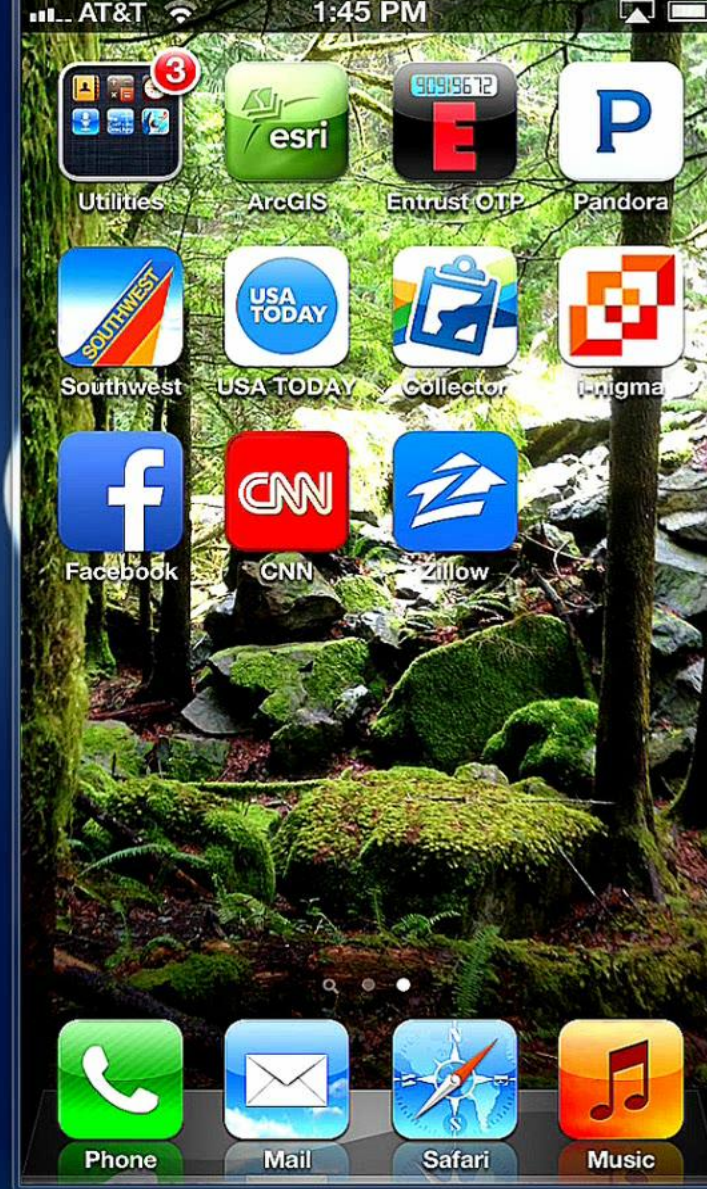
Title	Type	Modified	Shared
2014 - Annual DOT Report	Web Map	Jun 10, 2014	Everyone
2014 - Annual DOT Report	Operation View	Jun 10, 2014	Everyone
2014 - Assets by Decade Report	Features	Jun 10, 2014	Everyone
2014 - Assets by Material Report	Features	Jun 10, 2014	Everyone
2014 - EFV Report	Features	Jun 10, 2014	Everyone
2014 - Excavation Damage Report	Features	Jun 10, 2014	Everyone
2014 - Leaks by Cause Report	Features	Jun 10, 2014	Everyone
2014 - Leaks on Federal Lands Report	Features	Jun 10, 2014	Everyone
2014 - Miles of Mains by Diameter Report	Features	Jun 10, 2014	Everyone
2014 - Number of Services by Diameter Report	Features	Jun 10, 2014	Everyone
2014 - Part B - Section 1: General	Web Map	Jun 10, 2014	Everyone
2014 - Part B - Section 2: Mains by Diameter	Web Map	Jun 10, 2014	Everyone
2014 - Part B - Section 3: Number of Services by ...	Web Map	Jun 10, 2014	Everyone
2014 - Part B - Section 4: Assets By Decade	Web Map	Jun 10, 2014	Everyone
2014 - Part C: Leaks by Cause Report	Web Map	Jun 10, 2014	Everyone
2014 - Part D: Excavation Damage Report	Web Map	Jun 10, 2014	Everyone
2014 - Part E: Excess Flow Valve Data	Web Map	Jun 10, 2014	Everyone
2014 - Part F: Leaks On Federal Land	Web Map	Jun 10, 2014	Everyone
2014_-_Assets_by_Decade_Report	Service Definition	Jun 10, 2014	Not Shared
2014_-_Assets_by_Material_Report	Service Definition	Jun 10, 2014	Not Shared

1 - 20 of 27 results

<< < 1 2 > >>

Compliance Reporting

Providing reports that timely and easily accessed and understood.



Assessment

Enabling information to easily flow between field and office for tracking and monitoring of events..

Upsell_GasFurnance.xlsx - Excel

FILE HOME INSERT PAGE LAYOUT FORMULAS DATA REVIEW VIEW Esri Maps TEAM Pat Dolan

Clipboard Font Alignment Number Styles Cells Editing

J1 Assessment (Home Value > \$320K & Income > \$75K & House > 47yrs)


	A	B	C	D	E	F	G	H	I	J	K	L
1	Customer ID	Address	City	State	Postal	Country	2013 Average Home Value	2013 Average Household Income	ACS Median Yr Struct Blt: HUs	Assessment (Home Value > \$320K & Income > \$75K & House > 47yrs)		
2	1	617 Delles Rd	Wheaton	Illinois	60187	USA						
3	2	615 Delles Rd	Wheaton	Illinois	60187	USA						
4	3	613 Delles Rd	Wheaton	Illinois	60187	USA						
5	4	609 Delles Rd	Wheaton	Illinois	60187	USA						
6	656	223 S Morgan Ave	Wheaton	Illinois	60187	USA						
7	658	219 S Morgan Ave	Wheaton	Illinois	60187	USA						
8	659	215 S Morgan Ave	Wheaton	Illinois	60187	USA						
9	660	211 S Morgan Ave	Wheaton	Illinois	60187	USA						
10	661	207 S Morgan Ave	Wheaton	Illinois	60187	USA						
11	662	203 S Morgan Ave	Wheaton	Illinois	60187	USA						
12	663	118 S Morgan Ave	Wheaton	Illinois	60187	USA						
13	664	202 S Morgan Ave	Wheaton	Illinois	60187	USA						
14	665	206 S Morgan Ave	Wheaton	Illinois	60187	USA						
15	666	212 S Morgan Ave	Wheaton	Illinois	60187	USA						
16	667	218 S Morgan Ave	Wheaton	Illinois	60187	USA						
17	668	119 S Pierce Ave	Wheaton	Illinois	60187	USA						
18	669	114 S Pierce Ave	Wheaton	Illinois	60187	USA						

Customer List Customers Gecoded & GeoEnrich

READY 100%

Marketing

Ability to upsell new services to targeted customers to improve customer adoption.

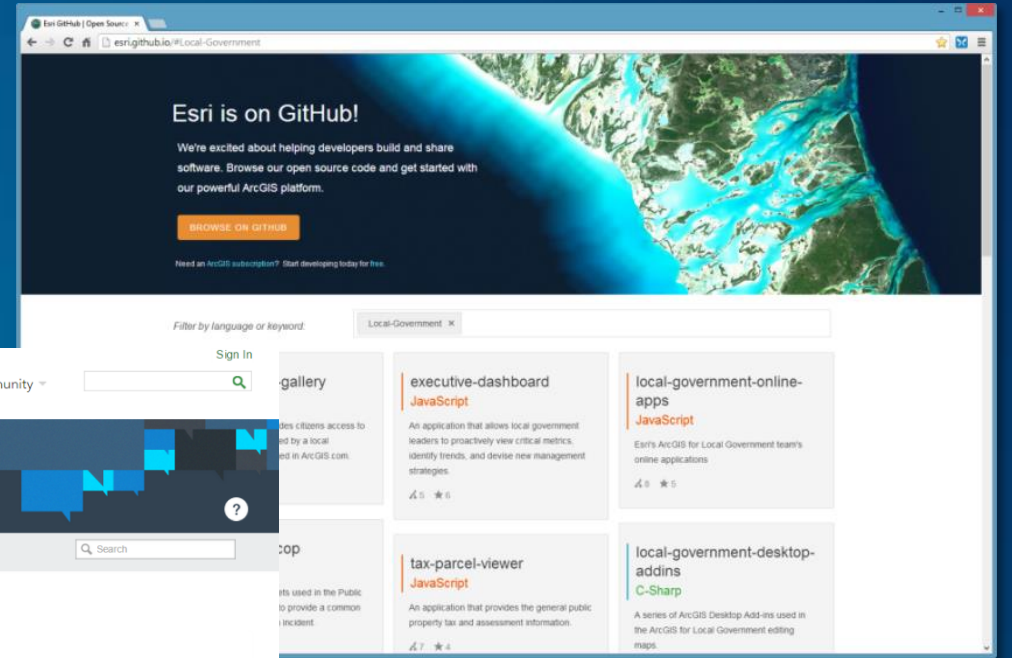
- 
- What are your top 3 challenges?
 - What are the most important maps you use today?
 - What are the most common devices used in your company?

ArcGIS for Utilities

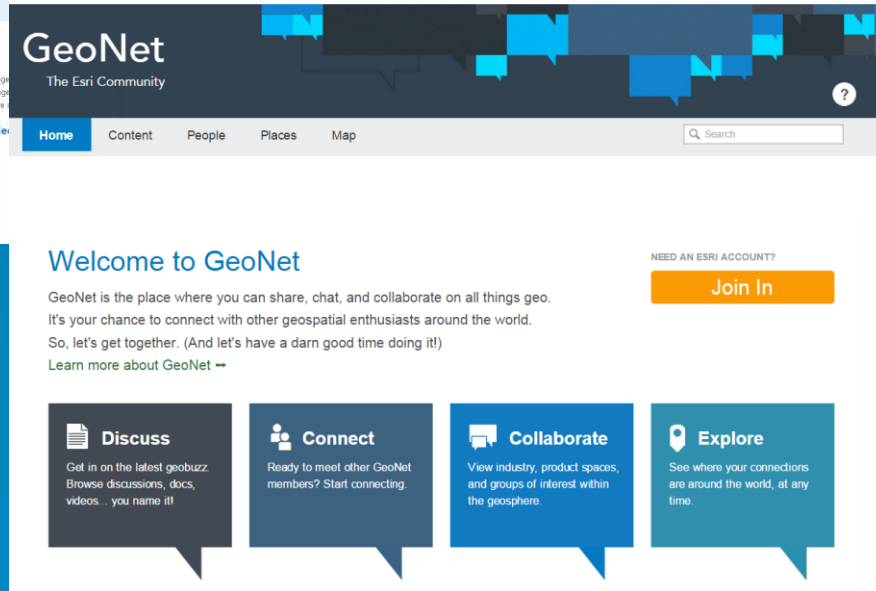
Developing your own roadmap



Solutions



GitHub



GeoNet

ArcGIS for Utilities

The Community



Understanding our world.