

Federal GIS Conference

February 9–10, 2015 | Washington, DC



Web Editing for ArcGIS

Sarah Schwoppe

ArcGIS for Desktop provides *powerful tools* for editing and managing your data

ArcSDE geodatabase

File geodatabase

CSV

Personal geodatabase

Sometimes you just want to capture
BUT
the location.

Data Reviewer

Topology Toolbar

Parcel Editor Toolbar

Editor for Open Street Map

Production Mapping

Districting Extension

Roads and Highways Extension

Network Analyst

Editing in ArcMap

The screenshot displays the ArcMap interface with several key components highlighted by blue callouts:

- Editor Toolbar:** Located at the top center, it contains various icons for editing features, such as the Editor dropdown menu, a red line tool, and other editing functions.
- Features to be Edited:** A callout points to the 'Damage_Assessment' layer in the Table of Contents, which is checked and highlighted in blue.
- Create Features Window:** A callout points to the 'Create Features' window on the right, which shows the 'Damage_Assessment' layer selected for editing.
- Attribute Table:** A callout points to the 'Table' window at the bottom left, which displays the attribute table for the 'Damage_Assessment' layer.

The main map area shows a satellite view of a city with several irregular polygons representing analysis zones. Numerous red circular points are scattered across these polygons, representing individual damage assessment features.

OBJECTID*	SHAPE*	Building_Status	Analyst	Date
1	Point	Possible Damaged B	Jones	1/27/20
2	Point	Impact crater / scorc	Jones	1/27/20
3	Point	Possible Damaged	Jones	1/27/20
4	Point	Damaged Building	Jones	1/27/20
5	Point	Possible Damaged	Jones	1/27/20
6	Point	Damaged Building	Jones	1/27/20
7	Point	Damaged Building	Jones	1/27/20
8	Point	Damaged Building	Jones	1/27/20
9	Point	Possible Damaged	Jones	1/27/20
10	Point	Damaged Building	Jones	1/27/20
11	Point	Damaged Building	Jones	1/27/20

4016544.176 3842062.029 Meters

Can multiple users edit and access your data at the same time?

Do any of your users work remotely or in the field?

Is there a time delay when multiple people are editing your data?

Is your editing workflow overly complicated and intricate?

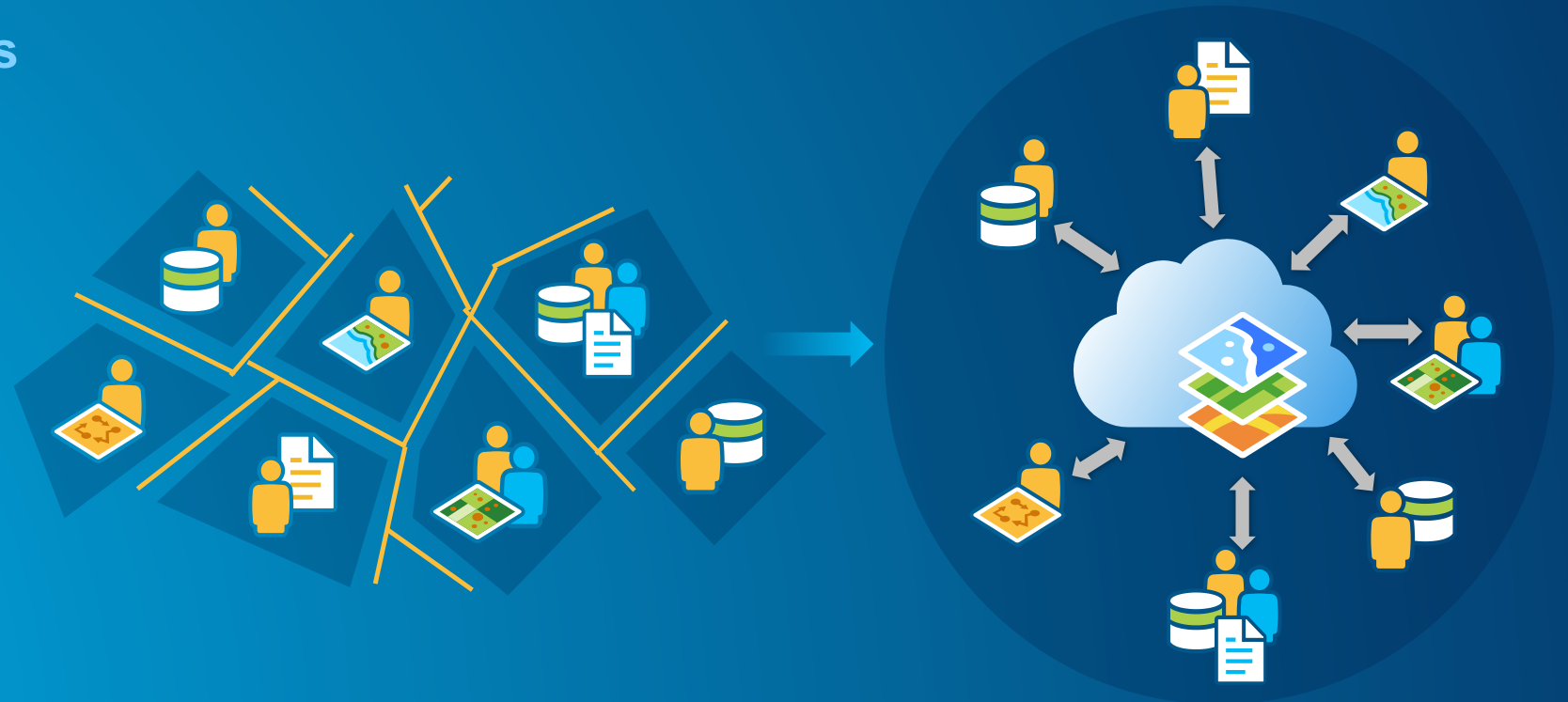
Web Editing...

Enables multiple users to edit the same dataset

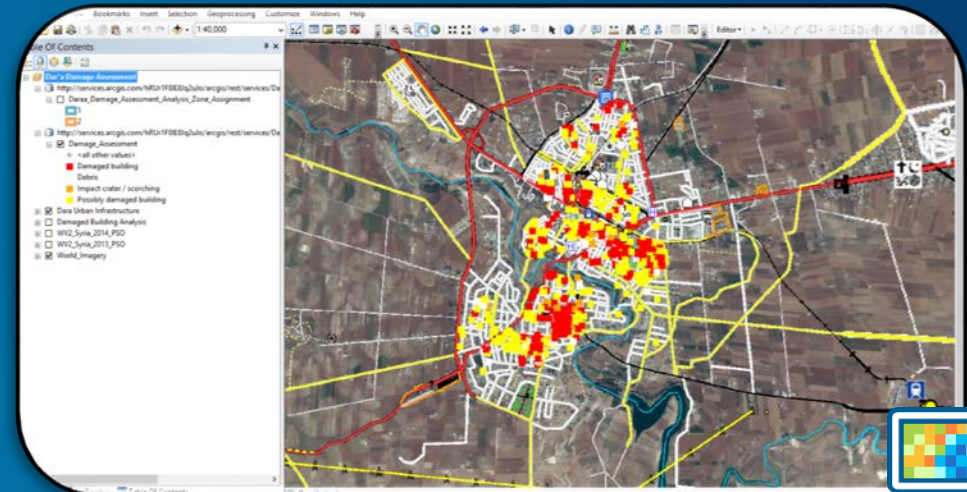
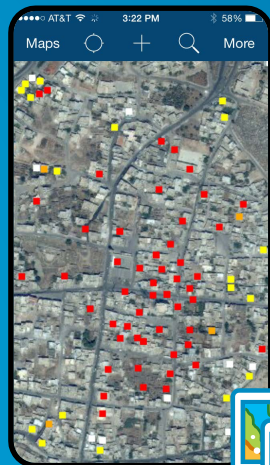
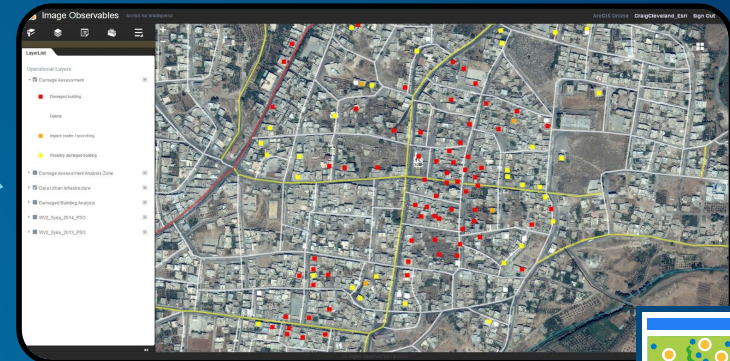
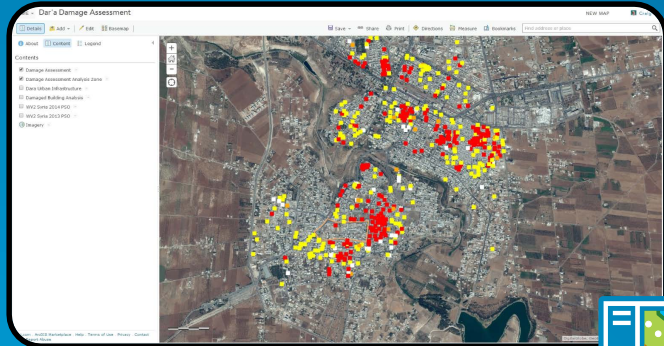
Transforms data management and editing workflows

Simplifies your editing workflow

Eliminates data editing silos



Edit Your Data Anywhere, Anytime on Any Device



Web Enabling Your Data

Web Editing Architecture: The Foundation

The Final Interface: Web Apps

The Building Blocks: Web Maps

Feature Services



Web Enabling Your Data



Demonstration: Publishing a Feature Service

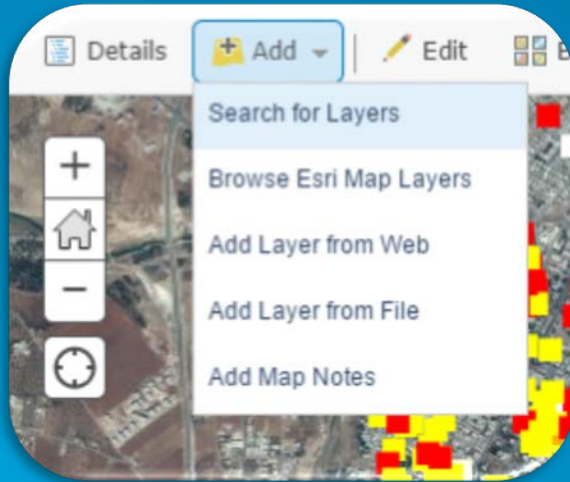
Creating Web Maps

Web Editing Architecture: The Building Blocks

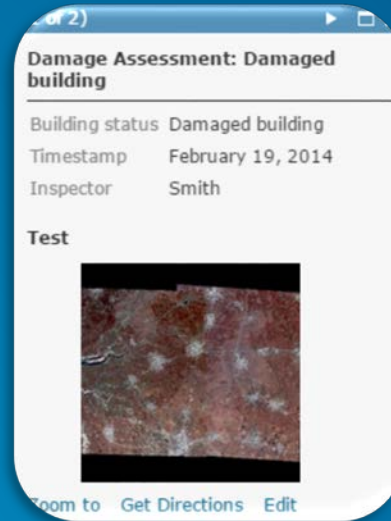


Create a Web Map

(1) Add content or layers



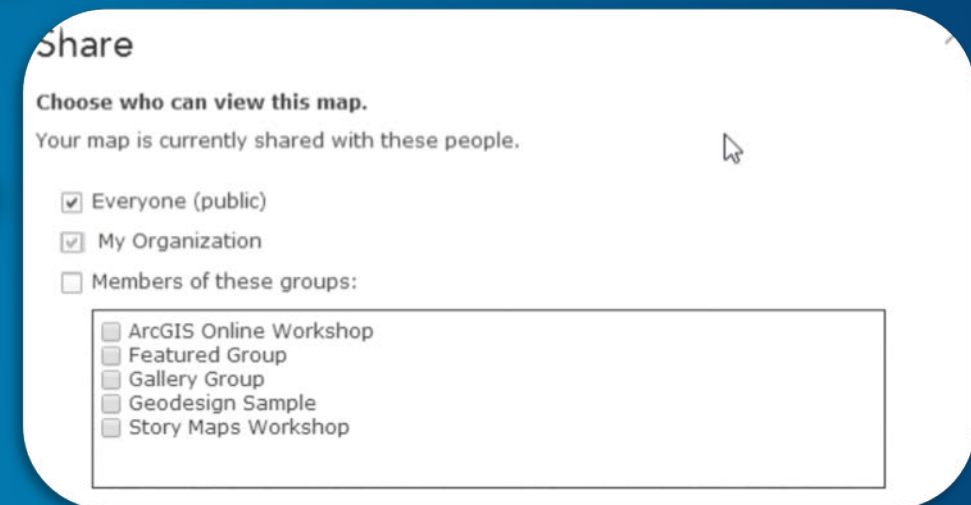
(2) Configure / style



(3) Select basemap



(4) Save and Share

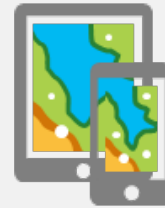


Demonstration: Building a Web Map

Configuring Editing Web Apps

Web Editing Architecture: The Final Interface

Web Apps



The Building Blocks: Web Maps

The Foundation: Feature Services

The Right App For the Right User Experience



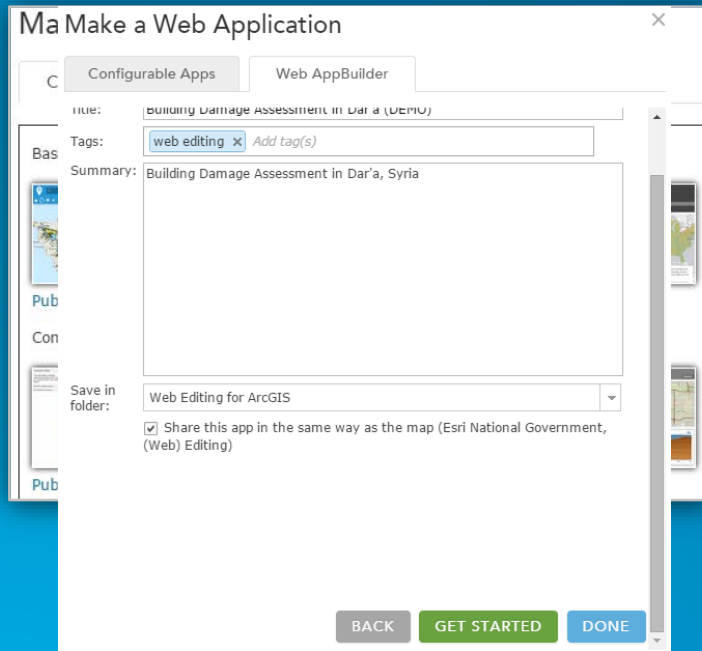
Want to create
web apps to
access the
apps on mobile
visitors data
and content?

Customize the
Choose a
Access native
configurable
apps such as
Web App
Collector, on
Template,
any one with
Web App
Builder.

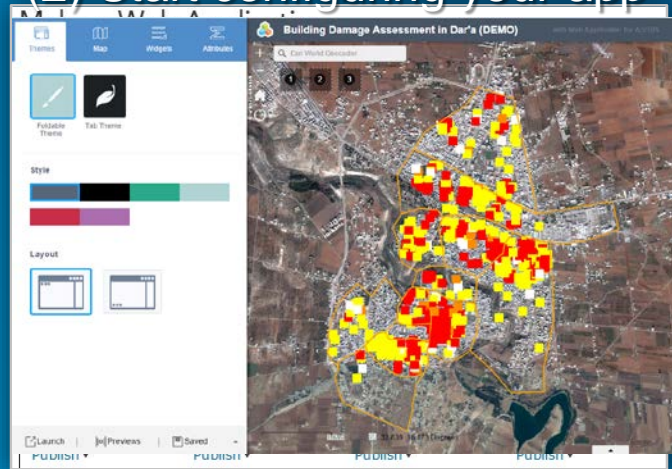
Web App Templates and Web App Builder

Configuring Web AppBuilder

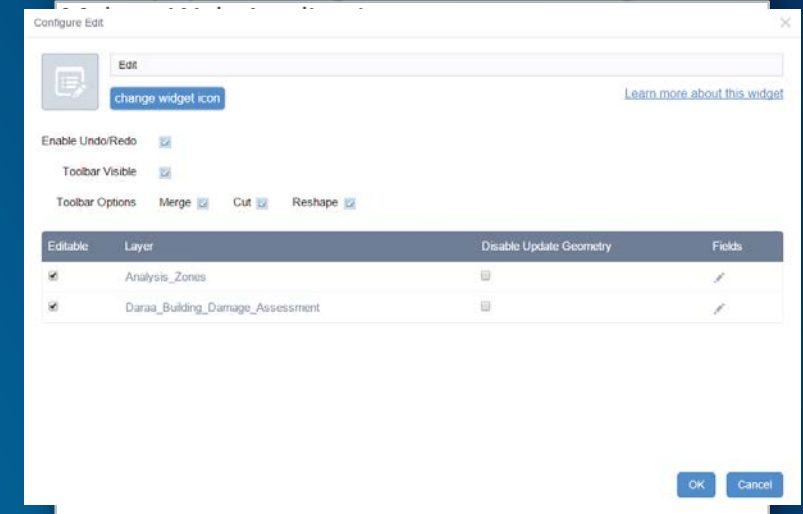
(1) Make a Web Application



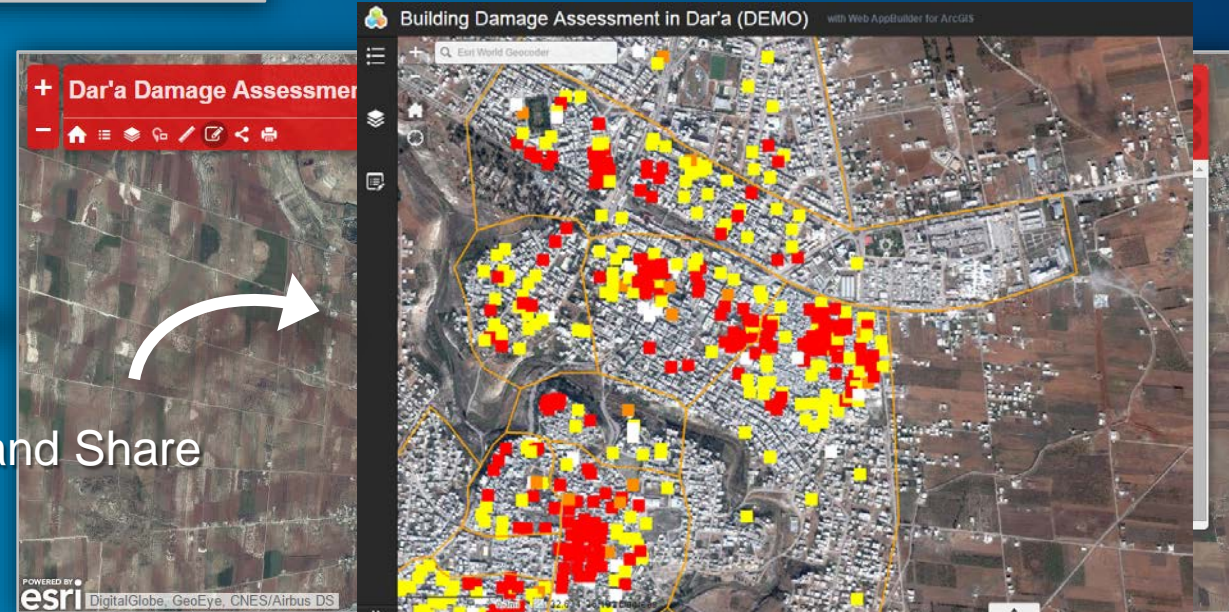
(2) Start configuring your app



(3) Configure Edit Widget



(4) Save and Share

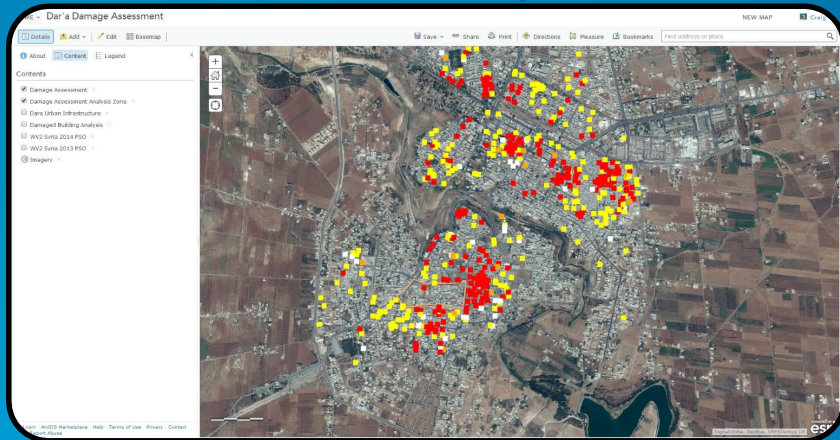


Demonstration: Web App Templates and Web App Builder

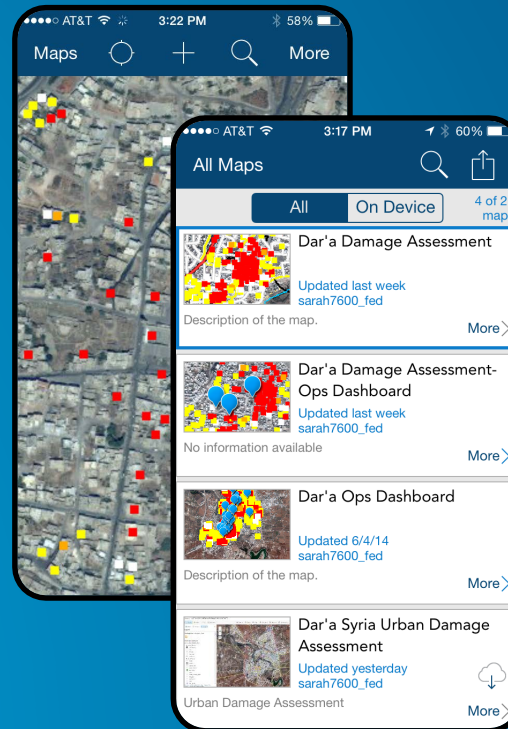
Native Mobile App - Collector

Collector for ArcGIS

Web Map



Collector



Collect and edit maps

Create and/or share a map

Edit data disconnected or connected to the network

Access content in the field on any mobile device

Demonstration: Configuring Collector App

Questions?

Resources

- **Publishing Hosted Web Layers** <http://doc.arcgis.com/en/arcgis-online/share-maps/hosted-web-layers.htm>
- **Features vs. Feature Services** <http://blogs.esri.com/esri/arcgis/2013/02/19/about-features-and-feature-services/>
- **Editing Features – ArcGIS Online** <http://doc.arcgis.com/en/arcgis-online/use-maps/edit-features.htm>
- **Web App Templates** <http://www.esri.com/software/arcgis-web-app-templates>
 - **Editor Web App Template Example** <http://www.arcgis.com/apps/Edit/index.html>



Understanding our world.