



PA Homeland Security/Public Safety Geospatial Portal Applications

ESRI FedUC 2006
Washington, DC

Jim Knudson (jknudson@state.pa.us)
Stacey White (stwhite@state.pa.us)



GTO Homeland Security Priorities

- Understanding of Agency Business Functions and Needs
- Statewide GT Data Assets
- Geospatial Enterprise Server Architecture
- GT Interoperability/Data Sharing
- Enterprise Strengthening
- Enterprise Capabilities

PA GTO HLS Functions

- Support for PEMA and other Public Safety agencies
- GT Governance Policy Board includes primary public safety/emergency response agencies (PEMA, OHS, PSP, DEP, DMVA, DGS, Health, Transportation)
- Definition of Geospatial Enterprise Architecture
- Review of DHS Grants related to geospatial
- Development of GT Interoperability standards, other GT standards and policies

PA GTO HLS Functions

- HLS IT Governance Workgroup Member
- Data Fusion (Intelligence) Steering Committee
- Working with PSP Crime Intelligence Center (PACIC) on geospatial support and products
- Defining Geospatial Components of State Homeland Security Assessment and Strategy (SHSAS) Update
- Regional Counter-Terrorism Task Force (RCTTF) collaboration and definition of minimum capabilities



**DHS Information Technology
Evaluation Program (ITEP) Project**

DHS ITEP Grant Project

- 2004 Information Technology Evaluation Program (ITEP) Competitive Grant
- 13 awards nationally, 3 in geospatial cluster, others in data sharing and wireless
- PA project defined as Enterprise GT Data Architecture (EGTDA)
 - Evaluation of DHS GEA, start of PA GEA
 - Enterprise Geospatial Data Repository
 - Interoperable GT Data Sharing utilizing Open Geospatial Consortium (OGC) Mapping Services
 - Geospatial Mission Applications
 - Reusable GT Web Service Components

Geospatial Enterprise Server Architecture (GESA)

- Fault tolerant, high availability, 24x7 operational capabilities
- Consolidated Enterprise Geospatial Database
- Shared Services GT Application hosting environment – for BGT and other agencies
- OGC Mapping Services
- XML Web Services Reusable Components
- Geospatial Portal Deployments

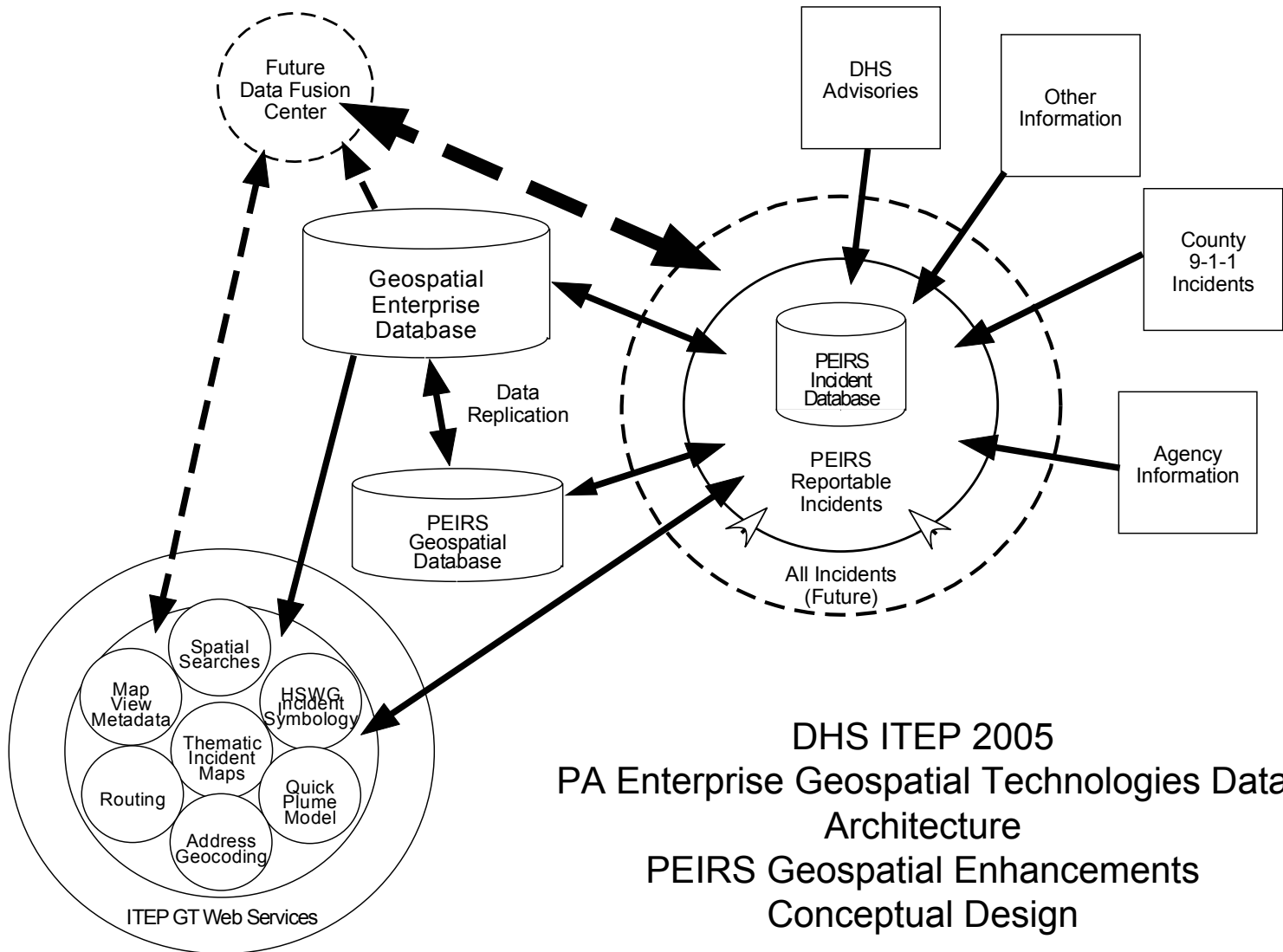
EGTDA Project

- Enterprise Geospatial Technologies Data Architecture
- Leverage the IRRIS/Geospatial Emergency Alert and Readiness System (GEARS) framework for Pennsylvania
 - \$15M Military Investment in Integrated Road and Rail Information System (IRRIS)
 - First IRRIS/GEARS state project deployed by VA DOT
 - 2nd in PA for EGTDA
 - 3rd in VA for DOH

EGTDA Concept of Operations

- Leverage the Geospatial Emergency Alert and Readiness System (GEARS) for Pennsylvania and build the Geospatial Analysis of Threats and Incident Reports (GATIR) Application Portal
- Augment PEMA's PA Emergency Incident Response System (PEIRS) with robust geospatial capabilities
- Develop interoperable mapping services that can be accessed over the web and used by agencies, counties, first responders
- Develop interoperable and reusable XML web service geospatial application components

EGTDA Concept of Operations





EGTDA

- Phase I – Development of OGC compliant mapping services to share geospatial data via the Internet
 - Data Inventory/Data Loading
 - Requirements Definition
 - Mapping Services Development
 - WMS/WFS
 - OGC
 - Deployment



EGTDA

- Phase II – Developed a secure geospatial portal for information sharing, mapping, visualization, and analysis
 - GEARS Framework as Base Architecture
 - GATIR = Geospatial Analysis of Threats and Incident Reports
 - System Documentation
 - Integration with PEMA PEIRS



EGTDA

- Phase III – Developed lightweight, reusable XML web services components to standardize and facilitate faster development of future GIS and information sharing application initiatives
 - .NET XML Web Services
 - Application Programming Interfaces
 - Mapping Web Service
 - Routing Web Service

GATIR Functionality

- PEMA PEIRS Added Functionality
 - Replacing incident location ‘dots’ with HSWG symbology
 - Role based user security mechanism for incidents
 - Thematic Incident Detail Maps – type of incident determines symbology and displayed layers, 1-5 mile distance rings, key assets/critical infrastructure nearby highlighted
 - Federal Disaster Declaration Map Automation
 - EOC/Situational Awareness Wall Map
 - Mapping, analysis, geocoding, routing
 - PEMA maintains control for access and details, GATIR assists in mapping and analysis
 - Difficult part was that PEIRS was being rewritten in .NET as the same time as our GATIR project was being developed



PEMA Map

Western Central Eastern

Saved Maps

All Categories Public Private

Western

DHS Terrorism Threat Level

THREAT ADVISORY
ELEVATED
Significant Risk of Terrorist Attacks.

CNN News Syndication Feed

CNN.com - U.S.

[Wounded ABC team in Germany](#)
Mon, 30 Jan 2006 03:10:53 EST
ABC News anchor Bob Woodruff and his cameraman arrived in Germany this morning to receive treatment for wounds they suffered Sunday in a roadside bomb attack near Taji, about 20 miles north of Baghdad. They were reported in serious but stable condition.

[Man denies raping toddler](#)
Mon, 30 Jan 2006 01:39:56 EST
A man charged with raping a 3-year-old girl who has been living with him and a woman who may be her mother blamed

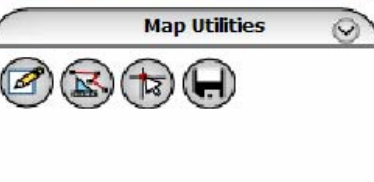
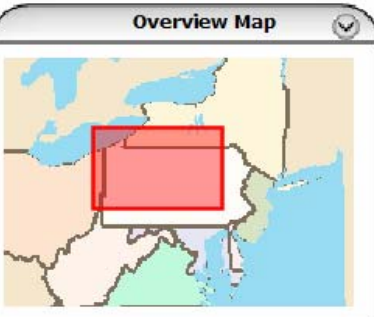
Fox News Syndication Feed

FOXNews.com - U.S. & World

[Hamas Asks Nations Not to Cut Aid](#)
Mon, 30 Jan 2006 08:46:03 EST
A Hamas leader asked the international community on Monday not to cut aid to the Palestinian Authority, saying Hamas was willing to have its spending monitored.

[Woodruff, Cameraman in Hospital in Germany](#)
Mon, 30 Jan 2006 09:17:46 EST
ABC News anchor, cameraman Doug Vogt hit by roadside bomb while on assignment in Iraq Sunday.

[Police Weigh Charges Against Ark. Mother](#)
Mon, 30 Jan 2006 09:08:36 EST

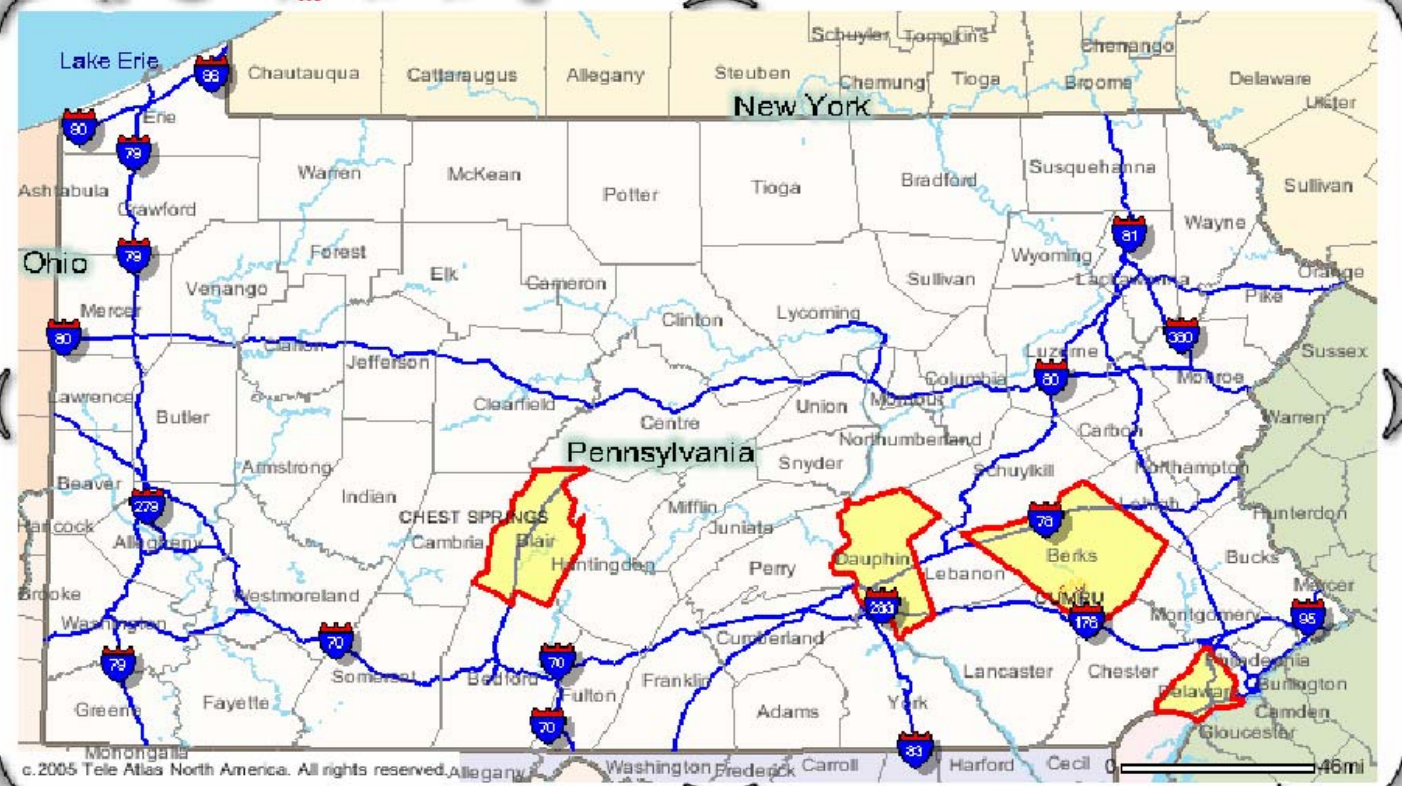


Legend Refresh Map

- Base Layers
- County Boundary
- Municipality Boundary
- Road Network
- Interstate
- Road Shields
- Interstate Shields
- State Boundary
- District of Columbia

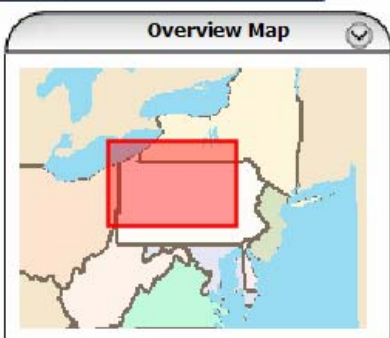


PEIRS Disaster Declarations



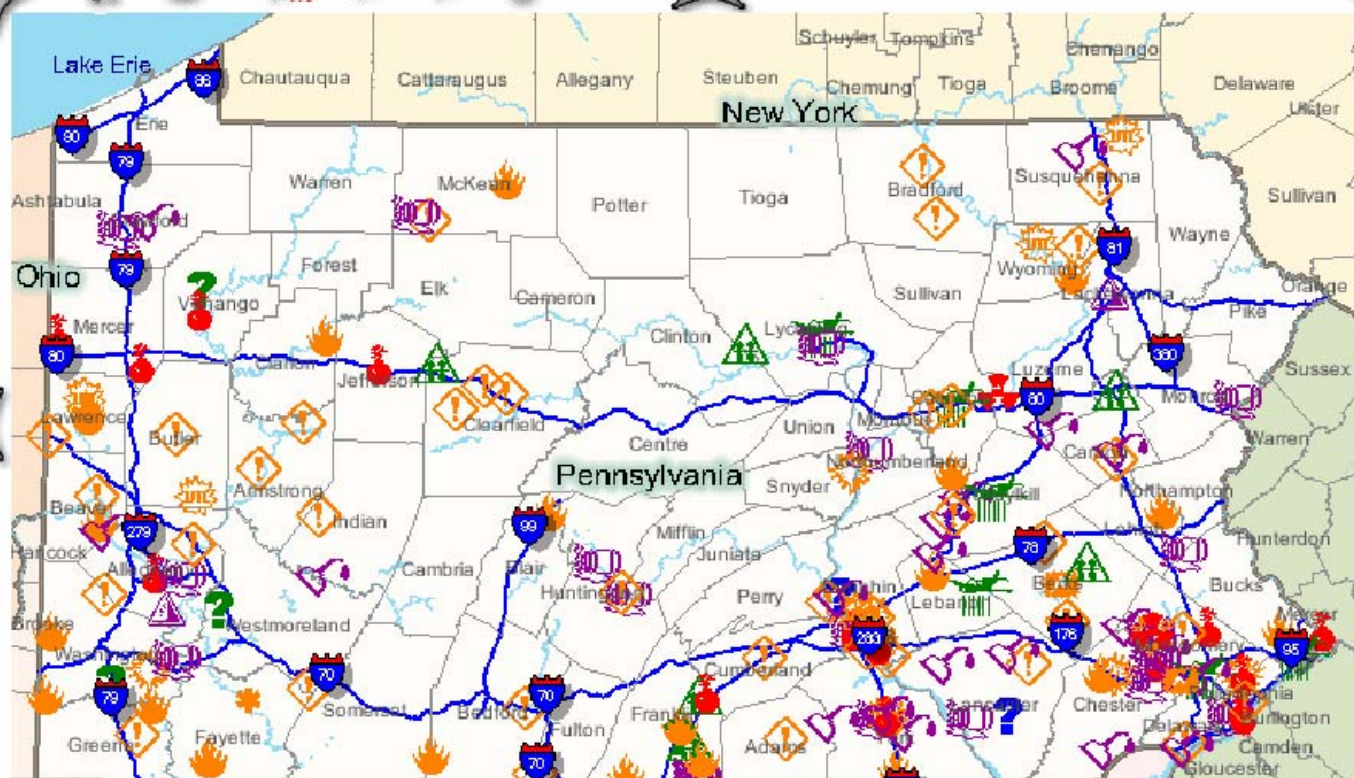


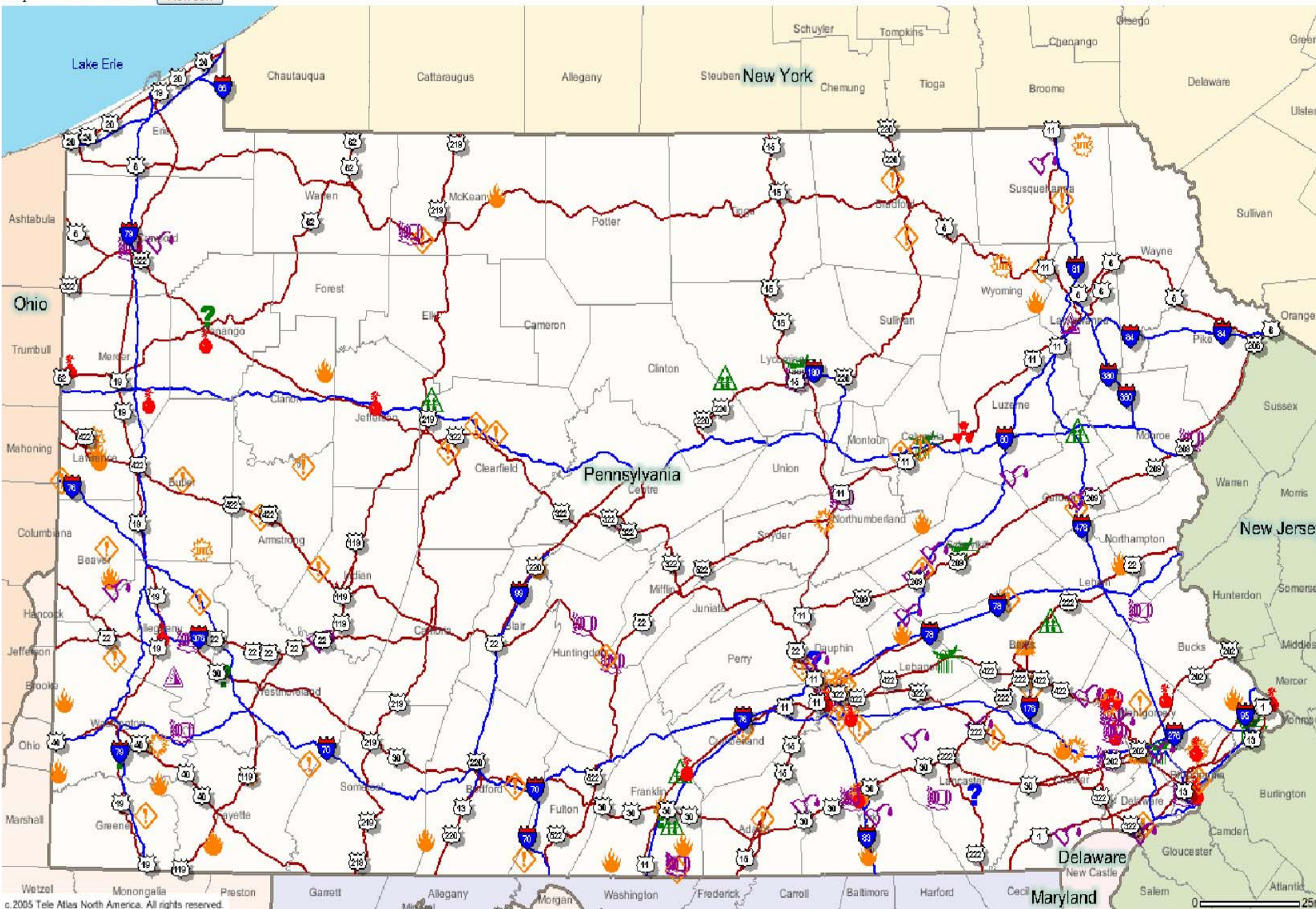
PEIRS Incidents



Legend Refresh Map

- Base Layers
- County Boundary
- Municipality Boundary
- Road Network
- Interstate
- Road Shields
- Interstate Shields
- State Boundary
- District of Columbia







Overview Map

KNOX FARMINGTON BARNETT
HIGHLAND CLARION MILLCREEK
JEFFERSON ELDRED
CLARION STRATTANVILLE UNION

Map Utilities

Legend Refresh Map

- Base Layers
- County Boundary
- Municipality Boundary
- Road Network
- Local Road
- Road Shields
- State Boundary
- District of Columbia
- Delaware

PEIRS Incidents

Original Map Last Map Zoom Box Zoom to Point Pan

FARMINGTON HIGHLAND MILLCREEK ELDRED

SR1001 SR1003 SR1007

DAISY LN STATE HWY GRAMMET LICK RD UNNAMED STREET PINE RIDGE LN

McGonney Run Millcreek Run

0 5028ft

North

Zoom from Center



Find Layers

hosp Search

Search Results

- Medical
- [Hospitals \(DTRA\)](#)
- [Hospitals \(HLT\)](#)
- [VA Hospitals](#)

Optional Layers

Expand All

- Available Layers
- Commercial
 - Manufacturing
 - Retail/Wholesale
- Emergency Response
 - 911 Centers
 - Fire Departments (DTRA)
 - State Police
- Medical
 - Hospitals (DTRA)
 - Hospitals (HLT)
 - VA Hospitals
- Emergency Operation Centers
- Government
 - Federal
 - Postal
 - Other Government
- Infrastructure
 - Air
 - Bridges
 - Energy
 - Mass Transit Networks
 - Rail
 - Amtrak Station

Selected Layers

Apply Changes to Map

- Emergency Response
 - [Fire Departments \(DTRA\)](#)
- Imagery
 - [DOQQ B&W Imagery](#)
 - [PAMAP Color Imagery](#)
- Medical
 - [Hospitals \(HLT\)](#)
- Natural Areas
 - [Game Lands](#)
 - [Special Flood Hazard Area](#)
 - [State Forest Districts](#)
 - [State Forest Gates](#)
 - [State Forests](#)
 - [State Parks](#)
 - [Wild and Natural Areas](#)
- Points of Interest
 - [K-12 Private Schools](#)
 - [K-12 Public Schools](#)
- Rail
 - [Amtrak Station](#)
 - [Railroad](#)
- Road
 - [Unpaved, Dirt and Gravel Roads](#)
- Surface Water
 - [Streams \(Positionally Accurate\)](#)
 - [Water Bodies \(Lakes and Ponds\)](#)
- Water
 - [Dams \(DEP\)](#)



Geographic Drill Down

- Congressional Districts
- Counter-Terrorism Task Force Regions
- Counties
- DEP Regions
- Legislative Districts
- MPOs
- Municipalities**
- PEMA Regions
- PennDOT Districts
- School Districts
- States

- BRADFORD**
- BUCKS
- BUTLER
- CAMBRIA
- CAMERON
- CARBON
- CENTRE
- CHESTER
- CLARION
- CLEARFIELD
- CLINTON

- SOUTH CREEK TWP
- SOUTH WAVERLY BORO
- SPRINGFIELD TWP
- STANDING STONE TWP
- STEVENS TWP
- SYLVANIA BORO
- TERRY TWP
- TOWANDA BORO**
- TOWANDA TWP
- TROY BORO
- TROY TWP

Build Map

Search Geographic Locator

- Street Address
- Latitude / Longitude
- ZIP Code

Street Address:

City:

State:

ZIP:

Search



Quick Search



Search Value: HOSPI

Search Results: 193 matches found

Click + button to expand query results

+	Airports	21 matches
+	Dams	1 match
-	Hospitals	169 matches
	Abington Memorial Hospital (Montgomery County)	
	Agnew Hospital (Allegheny County)	
	Aliquippa Hospital (Beaver County)	
	All Saints Hospital (Montgomery County)	
	Allegheny General Hospital (Allegheny County)	
	Allegheny Valley Hospital (Allegheny County)	
	Allentown State Hospital (Lehigh County)	
	Barnes Hospital (Susquehanna County)	
	Beaver County Home and Hospital (Beaver County)	
	Berks County Home and Hospital (Berks County)	
	Berwick Hospital (Columbia County)	
	Betts Hospital (Northampton County)	
	Black Hospital (Mifflin County)	
	Blair Memorial Hospital (Huntingdon County)	
	Booth Memorial Hospital (Allegheny County)	
	Booth Memorial Hospital (Philadelphia County)	

Build Map



Pennsylvania
Bureau of Geospatial
Technologies

Mon, 30 Jan 2006 14:47:04 Zulu
9:47:04 EST

Quick Search



My GATIR

Region Map

Mapping

Deep Link Test

Admin

Wall Map

Criteria

Map

Map Layers

Print

Overview Map



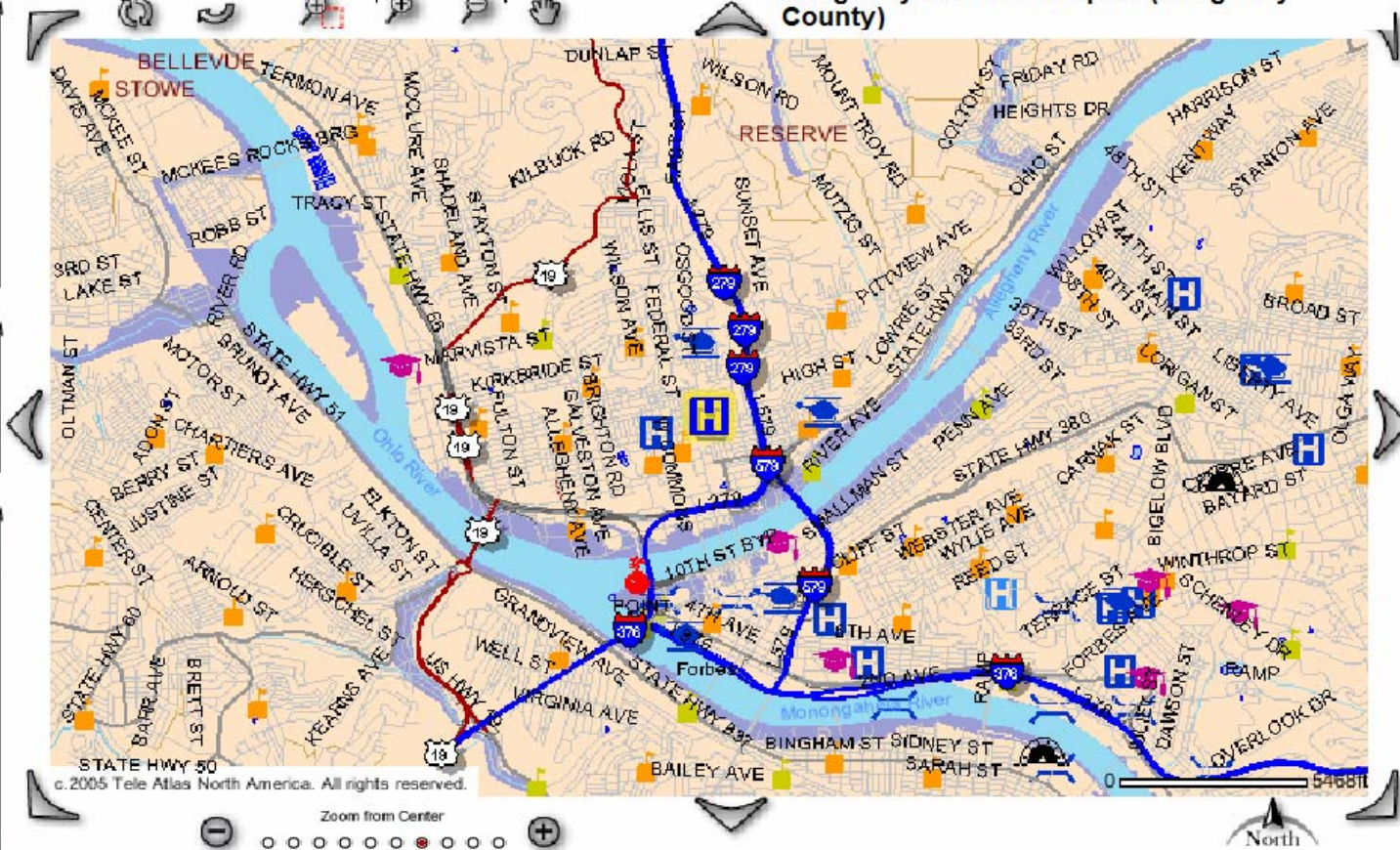
Map Utilities



Legend Refresh Map

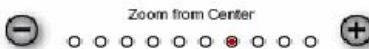
- Base Layers
- County Boundary
- Municipality Boundary
- Road Network
 - Interstate
 - US Highway
 - Interchange
 - State Highway
 - Local Road
- Road Shields
 - US Highway Shields

Original Map Last Map Zoom Box Zoom to Point Pan



© 2005 Tele Atlas North America. All rights reserved.

Zoom from Center



North



Pennsylvania Bureau of Geospatial Technologies

Mon, 30 Jan 2006 14:48:21 Zulu 9:48:21 EST

Quick Search



My GATIR

Region Map

Mapping

Deep Link Test

Admin

Wall Map

Criteria

Map

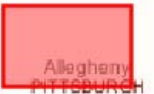
Map Layers

Print

Overview Map



RESERVE



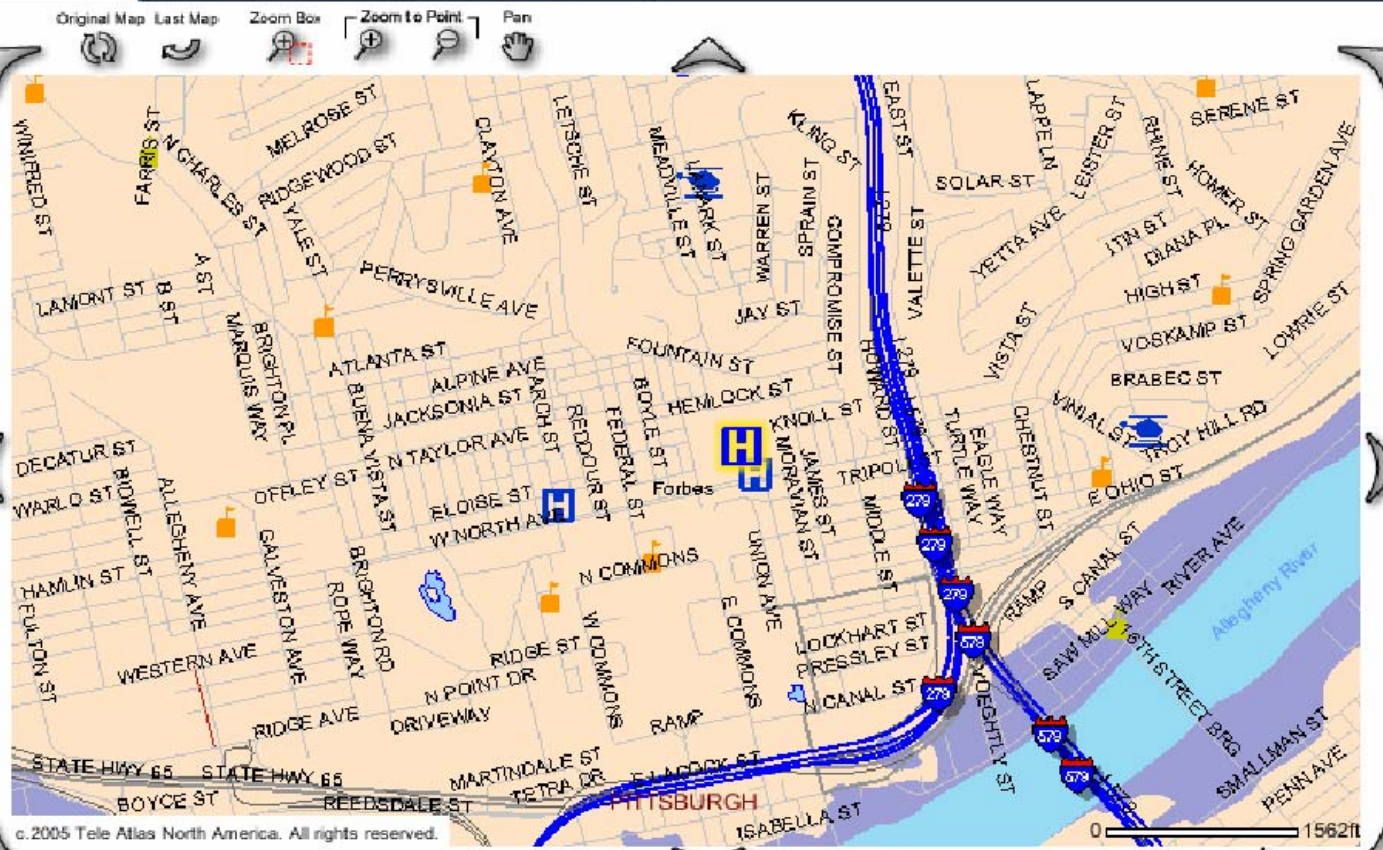
Map Utilities



Legend

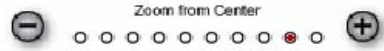
Refresh Map

- Base Layers
- County Boundary
- Municipality Boundary
- Road Network
 - Interstate
 - Interchange
 - State Highway
 - Local Road
- Road Shields
 - Interstate Shields
 - State Boundary



c. 2005 Tele Atlas North America. All rights reserved.

Zoom from Center



Future Functionality

- Implement CA/eTrust Security Model
- Expansion of enterprise GT database layers
- Additional XML Web Services
 - Gazetteer – location searches and routing stops
 - Spatial Search – designed but not implemented
 - Plume modeling
 - Print on Demand
 - Enhancements to mapping and routing services
- Mapping Collaboration Center/Web Context Services
- Secure OGC Mapping Services

Future Projects

- Severe Weather Alerting and Plume Modeling – SHSGP 2004 funding
- Health Geospatial Portal - \$400K in SHSGP 2005 funding (“HATIR”)
- Transportation Geospatial Portal – FHWA earmarks from 2004, 2005, 2006+? (“TATIR”)
- ESRI Portal Toolkit – Catalog Services
- Regional Counter Terrorism Task Force (RCTTF) collaboration projects

Future Projects

- Enhancements to GATIR - \$450K in SHSGP 2005 funding
- PENNSafe – hazardous materials stored in PA business facilities – paid for by Labor and Industry, hosted by BGT
- Data Fusion Center (Intelligence)
- Federated GIS Data Pilot Project – use of ArcGIS Server to share state/local data transparently in a common mapping application

Weather/Plume Modeling

- GESA Architecture built, Weather data processing servers installed, weather data services procured and being deployed
- Load real-time weather data into Oracle/ArcSDE enterprise database, incorporate into OGC mapping services and applications
- Develop web-based plume modeling capabilities
- Develop location and temporal-aware severe weather alerting capabilities

PA GTO Website

Cannot find server - Microsoft Internet Explorer

File Edit View Favorites Tools Help

Back Forward Stop Refresh Home Search Favorites Media Mail Print

Address <http://www.gis.state.pa.us/> Go Links

OA Central

OA Central HOME Office for Information Technology Human Resources and Management Office of Management and Productivity Continuity of Government

Search BGT

- BGT General Information
- Geospatial Technologies Governance
- Geospatial Standards
- ITQ GIS Approved Vendors
- Geospatial Technologies Council
- Presentations
- Suggested Links
- Geospatial Technology Workgroups
- Tropical Depression Ivan Response & Recovery
- What's Hot
- NAIP CIR County Mosaics
- Grant Awards
- PA GIS Conference
- Enterprise GIS Web Services
- TeleAtlas License Agreement
- Citrix Installation User Guide for ArcGIS
- BGT Agency Briefing Documents
- Calendar

September 24, 2005

Jim Krudson
Director of Geospatial Technologies

- Geospatial Technologies Manager**
- Contact Information**

Quick Links

- Events Photos**
- LOGO Design Contest Entries**
- Mission, Vision, and Guiding Principles**
- Strategic Plan**
- Press Releases**
- Tropical Depression Ivan Response & Recovery Mission**

What's Hot
9/20/2005

Upcoming Events
9/8/2005

Announcements
6/3/2005

What's New

PAGIC Archive

<http://www.oa.state.pa.us/cog/site/default.asp?cogNav=|&ocNav=|> Internet

<http://www.gis.state.pa.us>