

# USMC Installation GIS Regionalization

---

ESRI Federal Users Conference

10 Jan 2007



# Topics

---

- What is Regionalization?
- Why Regionalization?
- Roles and Responsibilities
- Transition Methodology
- Architecture
- Current Status
- Comments/Questions

# What is Regionalization?

---

- A regional approach to consolidating common program operations and eliminating redundant geospatial investments
  - Centralize the system administration, data and application hosting, software and hardware management burdens that now occupy the time of each installation's staff
  - Centrally manage programmatic requirements of using geospatial technologies

# Why Regionalization?

---

- Provide a common output levels of service or capability
- Leverage best practices and business processes
  - Enables installations to focus limited staff resources
  - Leverages GIS tools not previously available to support installation mission processes
  - Standardizes user practices
- Operational and Cost Efficiencies
  - Reduces system administration
  - Reduces hardware, software, and license maintenance costs
  - Reduces NMCI costs - Move from desktop to server based environment
  - Supports a robust portfolio management approach to geospatial information and assets

# Roles and Responsibilities

---

- HQMC (I&L) – Provide *GEOFidelis* Program leadership, funding, and functional advocacy
- Regional Centers – Provide centralized data/application hosting and program management services
- Installations – Provide Data stewardship, ownership, and subject matter expertise

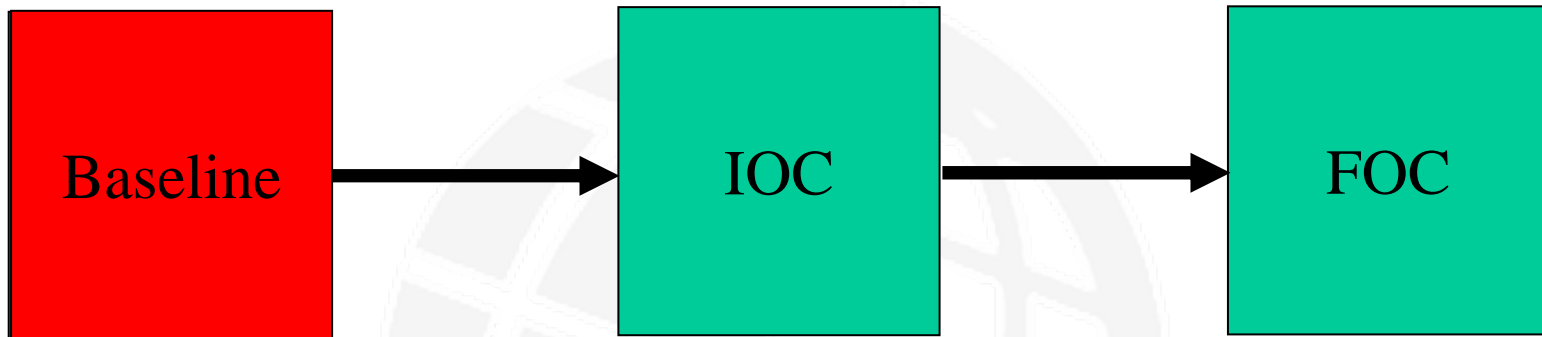
# Transition Methodology

---

- Identified two Regional Centers
  - *GEOFidelis East*
    - Center at MCB Camp Lejeune will support:
      - Marine Corps Installation (MCI) East
      - Marine Corps National Capital Region (MCNCR)
      - MCRD Parris Island
  - *GEOFidelis West*
    - Center at MCB Camp Pendleton will support:
      - Marine Corps Installation (MCI) West
      - MCRD San Diego
      - MCB Hawaii

# Transition Methodology

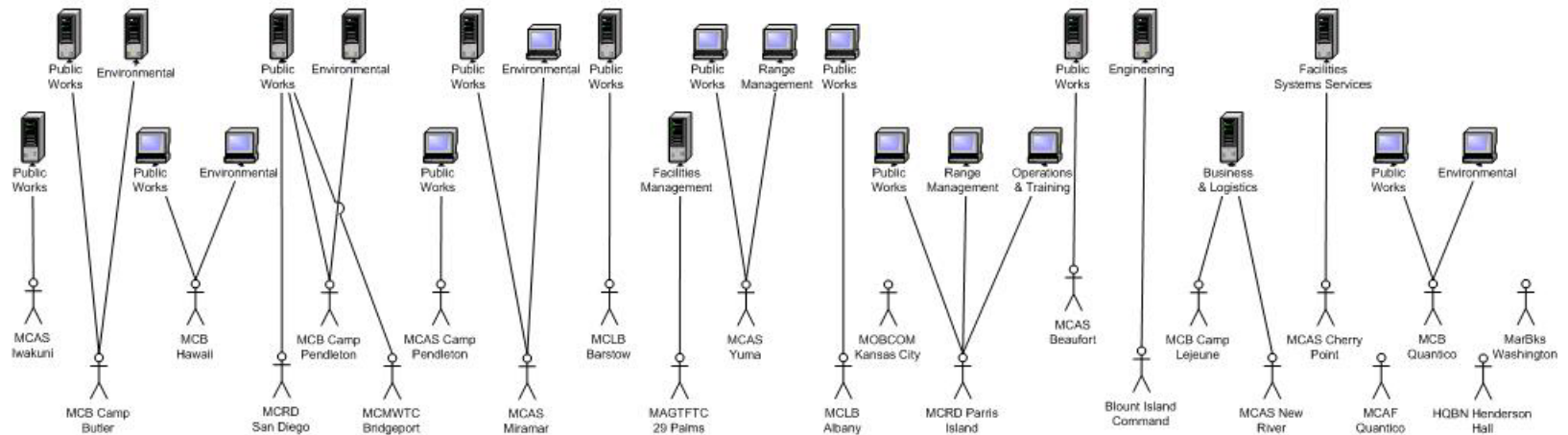
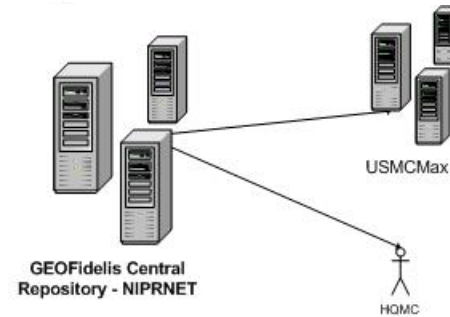
---



## ➤ Baseline

- Various Data Formats
- Various Data Models
- Limited Data Access
- Multiple Levels of Expertise

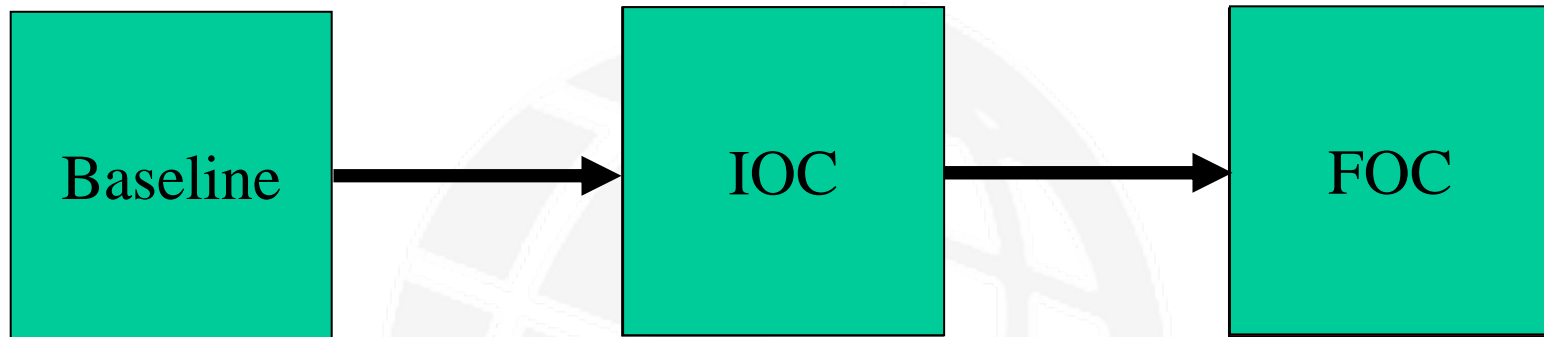
# Transition Methodology





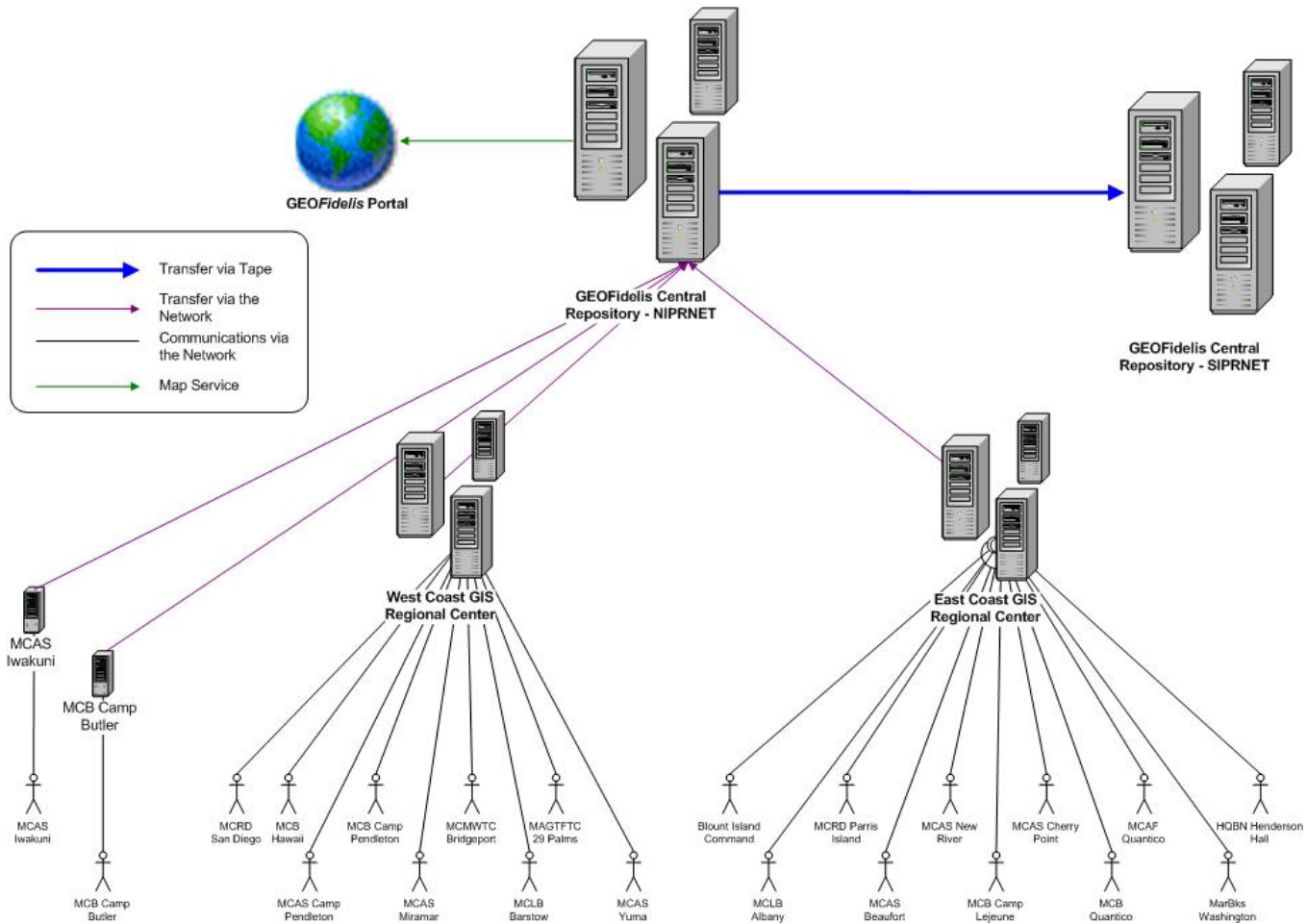
# Transition Methodology

---



- Full Operational Capabilities (FOC)
  - Centralized GIS Database Hosting
  - Map Production GIS Desktop via CITRIX
  - ArcGIS Web Sites
  - Application Support

# Transition Methodology



# Architecture

---

## ➤ Database

- ArcSDE 9.1
- SQL Server

## ➤ Desktop

- ArcGIS Desktop 9.1
- CITRIX ICA Client 8.0

## ➤ Web Viewer

- ArcIMS 9.1

# Current Status

---

- *GEOFidelis* East
  - Baseline – **Completed**
  - IOC – In Progress
    - 5 of 9 Installations Completed
  - FOC – Not Started
- *GEOFidelis* West
  - Baseline – In Progress
    - 6 of 9 Installations
  - IOC – In Progress
    - 5 of 9 Installations
  - FOC – Not Started

---

# Comments & Questions



# Contact Information

---

Nicholas Spurling

GEO*Fidelis* Contract Support

Email: [nicholas.spurling.ctr@usmc.mil](mailto:nicholas.spurling.ctr@usmc.mil)