

GEOFidelis Portal

2007 ESRI Federal Users
Conference



Agenda

- GEOFidelis Portal Introduction
 - Progression to current capability
 - Early Success Stories
- Current Capability
 - Business System Integration
 - Common Installation Picture
- Next Steps
 - Continued System Integration
 - Architecture Changes
 - USMC GEOFidelis Regionalization



GEOFidelis Portal Introduction

Progression to Current Capability

- GEOFidelis Central Repository
 - Vector Data and Imagery for USMC Installations
 - 2005 BRAC IVT
 - Supporting the Installation Visualization Tool for BRAC 2005
 - 8 Required Feature Layers
 - USMCmax
 - Enterprise Business System Integration
 - GEOFidelis incorporated in the Facility Maintenance Application

Early Success of Central Repository



GEOFidelis Central Repository

- Benefit to USMC
 - Provides single source of USMC Installation GIS Data
 - Converted to Common Data Model (SDSFIE)
 - Supports USMC-wide data requests
 - Streamlines System Integration
 - Common Installation Picture
- Baseline Database for Portal
 - Allowed Rapid Portal Development
 - Data Refresh from Installations
 - Early Basis - GEOFidelis Regionalization

Current GEOFidelis Portal Capability



User Community

- HQMC Users within the I&E Domain
 - Initial Focus on Facilities Management and Ad Hoc Mapping
- SIPRNet Capability
 - Supporting PP&O (Plans, Policies, and Operations) Physical Security
- “As Required” Access
 - Various Users across USMC

The GEOFidelis Portal

➤ Architecture

- Oracle Application Server (OAS) with ArcSDE and ArcIMS
- Oracle Collaboration Suite

➤ Current Capability

- Information Sharing Tools
- Common Installation Picture
- iNFADS Integration
- CORRS Integration

Information Dissemination

GEOFidelis
SUPPORTING MARINE CORPS INSTALLATIONS

Andy Hanes [Login / Logout](#)

- ABOUT GEOFidelis
- MAPS
- DOCUMENTS
- NEWS
- APPLICATIONS

Maps

CALENDAR

- 9-12 January 07 - ESRI Federal Users Conference - Washington, DC
- April 07 - Japan ESRI Defense Users Group Meeting - Tokyo, Japan
- April 07 - Annual Marine Corps GIS Meeting - (Site TBD)
- 21-24 May 07 - Joint Services Environmental Management &

USMC Geospatial Data Disclaimer

Although every effort has been made to ensure the accuracy of the information, errors and conditions originating from physical sources to develop the database may be reflected in the data supplied. The user must be aware of data conditions and ultimately bear responsibility for the appropriate use of the information with respect to possible errors, original map scale, collection methodology, currency of the data, and other conditions specific to certain data.

USMC Installations shall not be held accountable for redistributed data as the process of redistribution impacts data currency, completeness, accuracy, and quality control of data development initiatives. We can only be accountable for data distributed and

MAPS

My Maps

- DEFAULT**
[2006-07-26 09:38:38.0]

Shared Maps

Common Installation Picture

The screenshot displays the GEOFidelis web application interface. At the top left, the logo 'GEOFidelis' is visible. The top right corner shows the user is logged in as 'AHANES@GEOCGI.COM.' with a 'Logout' link. Below the header is a navigation bar with icons for search, home, and other functions. A 'Select Identify Layer:' dropdown menu is set to 'Select a Layer'. To the right are 'Viewfinder' and 'Compass Pan' controls. The main area is a map showing building footprints in various colors (yellow, green, orange) with labels like 'Q-1', 'Q-2', 'Q-3', and 'Q-4'. A 'ZoomLevel' slider is on the left. A 'Quick Help' dialog box is open in the center, listing categories: 'Auditory', 'Basemaps', 'Buildings', and 'Cultural'. Under 'Buildings', there are four checked options: 'Structures', 'Structures (Q Ratings)', 'Structures (Quality)', and 'Structures (Quantity)'. At the bottom, there are buttons for 'Layers', 'Preferences', 'Locate', 'My Maps', and 'Help'. The footer contains copyright information: '© 2006 GEOFidelis. All rights reserved.' and a navigation menu: 'Home / About GEOFidelis / Maps / Documents / News / Applications'.

- Quick Help -

- Auditory
- Basemaps
- Buildings**
 - Structures
 - Structures (Q Ratings)
 - Structures (Quality)
 - Structures (Quantity)
- Cultural

Common Installation Picture

The screenshot displays the GEOFidelis web application interface. At the top left, the logo 'GEOFidelis' is visible. The top right corner shows the user is logged in as 'AHANES@GEOCGI.COM.' with a 'Logout' link. The main interface includes a toolbar with icons for search, identify, pan, and zoom. A 'Select Identify Layer:' dropdown menu is set to 'Select a Layer'. Below the toolbar is a large satellite map. A 'Locate by Installation' dialog box is open in the center of the map, containing the following text and list:

Locate by Installation

Select the installation you wish to zoom to:

- Choose Installation -
- Choose Installation -
- MCLB Albany
- MCLB Barstow
- MCAS Beaufort
- Blount Island Command**
- MCMWTC Bridgeport
- MCB Camp Butler
- MCAS Cherry Point
- MARBKS Washington DC
- MCAS Futenma
- Henderson Hall

The dialog box has a green arrow button to the right of the first dropdown menu. The map background shows a residential area on the left and an industrial or military facility on the right. The bottom of the interface features a navigation bar with buttons for 'Layers', 'Preferences', 'Locate', 'My Maps', and 'Help'. The footer contains the copyright notice '© 2006 GEOFidelis, All rights reserved.' and a navigation menu with links for 'Home', 'About GEOFidelis', 'Maps', 'Documents', 'News', and 'Applications'.

iNFADS and CORRS Integration

NFADB Facility Details

M00318
242 - PW SHOP/OFFICE

FACILITY DETAILS	
Installation :	M00310 MCB HAWAII KANEHOE
Special Area :	
Reporting Claimant :	M00027 MARCORP
Mission Claimant :	M00027 MARCORP
Operational Claimant :	N00070 PACFLT
Former Installation :	
Property No. :	200643
Facility No. :	242
Facility ID :	NFA1000001267
Facility Type :	2 Building
Action Type :	2 Capital Impro
Former PR No. :	
Last Updated :	1/13/2006 6:37:1

LOCATION	EXCESS AND DISPOSAL
Region :	N61449
Country :	US UNITED STATES
State :	15 HAWAII
County :	003 HONOLULU
City :	3500 KANEHOE
Map Grid :	H17
Excess Action :	
Excess Date :	
Consolidated PR :	
Disposal Method :	
Disposal Date :	
Disp Contract No. :	


Acquisition Date : 1/1/1952 12:00:00AM

CORRS Facility Conditions and Costs

MCB HAWAII KANEHOE
61010 - FACILITIES DEPT OFFICE


QUALITY RATING AND CONDITIONS

C-3



CONDITION	SF	%
INADEQUATE	59,603	11
SUBSTANDARD	341,228	63
ADEQUATE	140,372	26
TOTAL RATED ASSETS	541,203	100

IMPROVE TO	RESTORATION	REPLACEMENT	TOTAL
100% ADEQUATE	\$ 42,392,495.00	\$ 14,809,569.00	\$ 57,202,064.00
C-1 (90%)	\$ 22,221,572.00	\$ 14,809,569.00	\$ 37,031,141.00
C-2 (80%)	\$ 0.00	\$ 9,453,028.00	\$ 9,453,028.00
C-3 (60%)	\$ 0.00	\$ 0.00	\$ 0.00



Layers
Preferences
Locate
My Maps
Help

© 2006 GEOFidelis. All rights reserved.
[Home](#) / [About GEOFidelis](#) / [Maps](#) / [Documents](#) / [News](#) / [Applications](#)

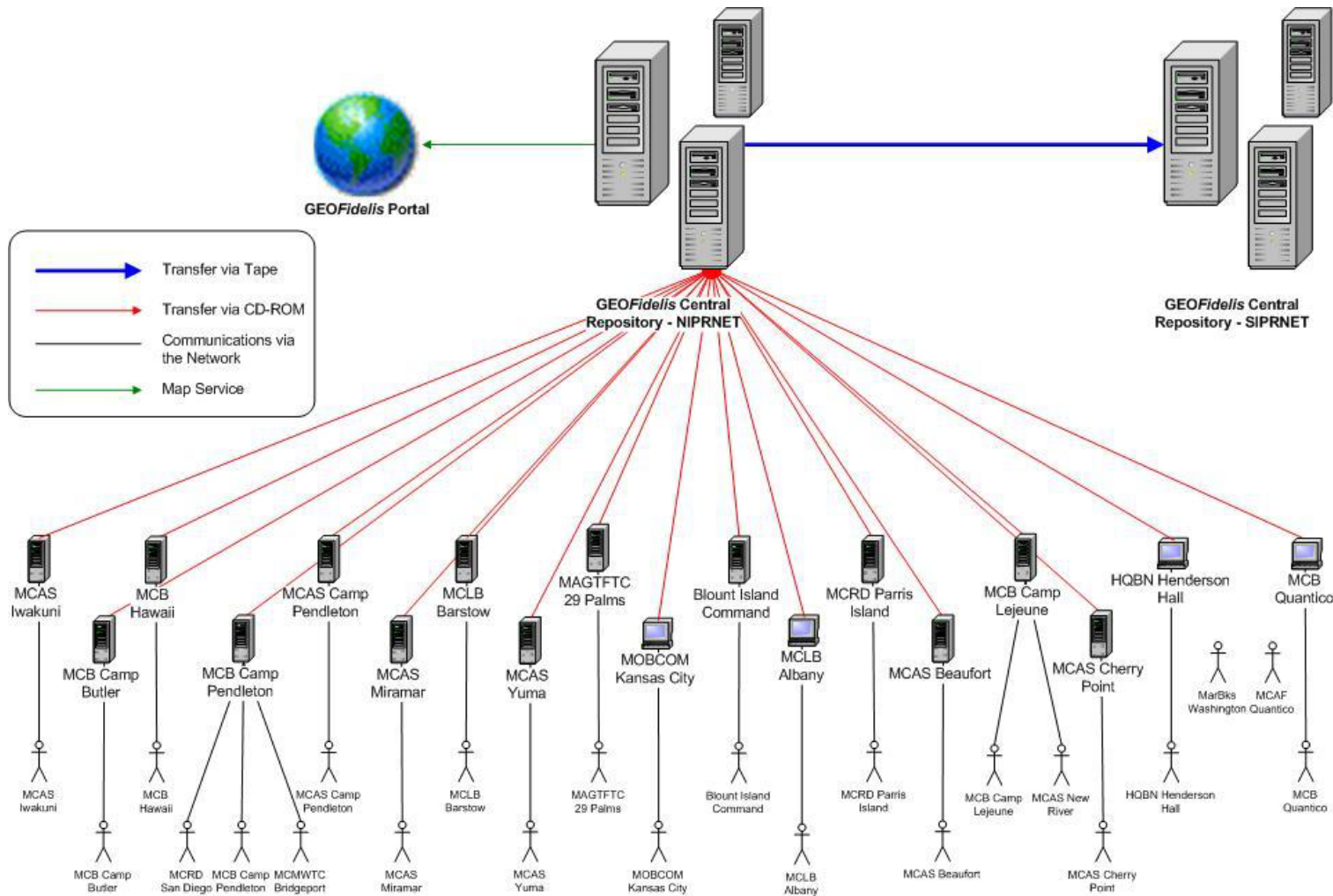


Next Steps

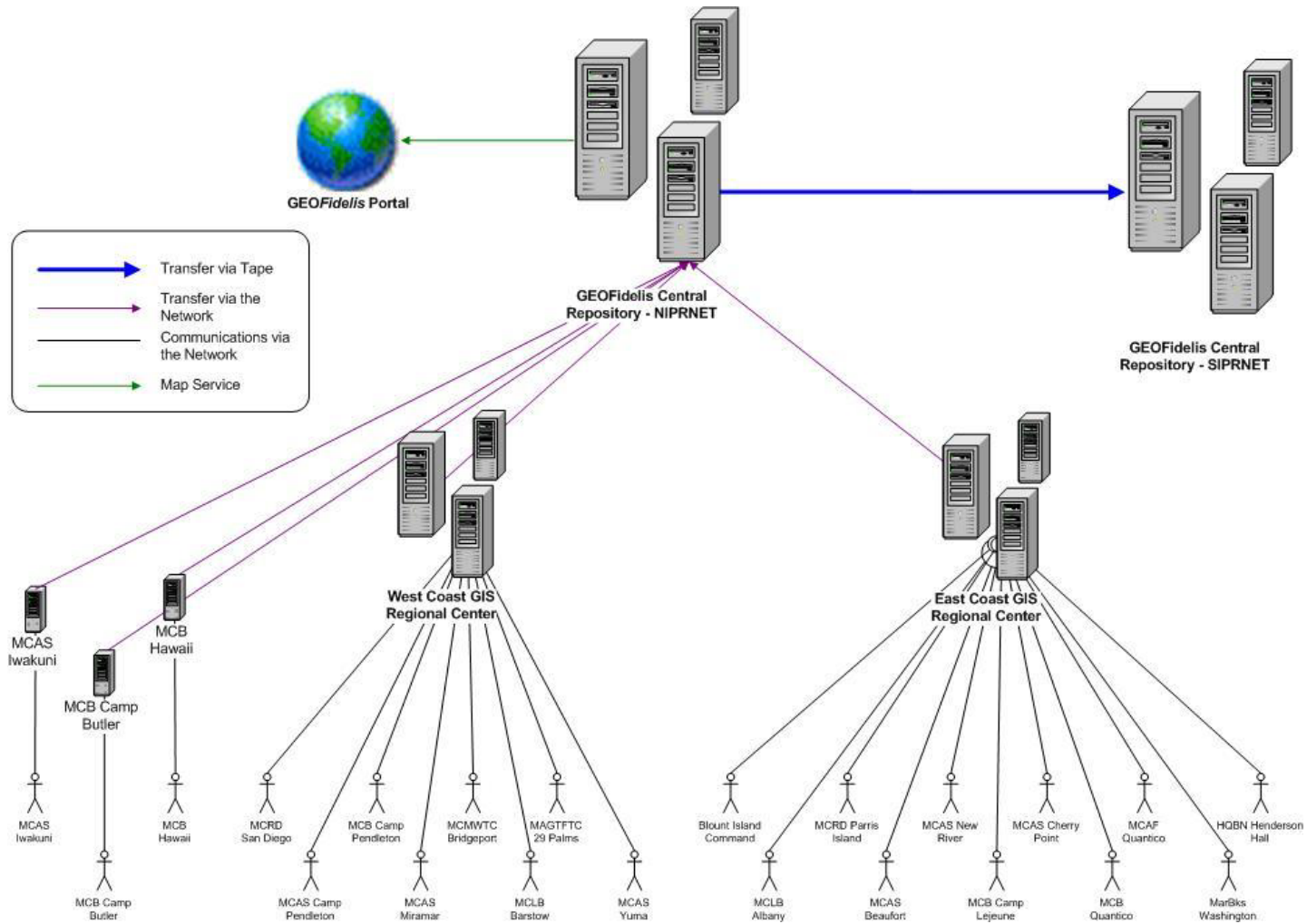
The Portal Future

- Migration to SharePoint and MS SQL Server
 - Architectural Shift to align GEOFidelis Regions
 - USMC Standard
- Requirements Gathering for V2
 - Expanding Support throughout HQMC and GEOFidelis Regions
- Operations to be moved within MCEITS
 - Improved performance within MCEN
 - Consolidated Administration and COOP

Repository Development



GEOFidelis Regionalization



The Portal Future

- Identifying Systems for spatial integration
 - Environmental
 - Natural Resources
 - MILCON
 - Planning
 - Physical Security
- Data Additions
 - All USMC AOI (Reserve Locations, etc.)
 - USMC Tenant Locations (Map Service linking to other Services)

The Portal Future

➤ System Goals

- Support Enterprise Systems by continued integration of USMC spatial data
- Service Oriented Architecture
- Enterprise Data Models of Business Applications that utilize spatial information
- Mature and streamlined enterprise oriented workflows
- Single Sign On

Andy Hanes
GEOFidelis Contractor
andy.hanes.ctr@usmc.mil
ahanes@geocgi.com
(571) 243-8202
