

COP for Support – Integrating SAP for Defense & Security with Geospatial Information



Jeffery E Marshall

Director, Homeland Security

SAP Public Services

Common Operating Picture – What is it?

SAP's Defense Forces and Public Security

Integrating and using DFPS in a COP



Common Operation Picture (COP) - A single identical display of relevant information shared by more than one command. A common operational picture facilitates collaborative planning and assists all echelons to achieve situational awareness.

Common Relevant Operational Picture (CROP) - A presentation of timely, fused, accurate, and relevant information that can be tailored to meet the requirements of the joint force commander and the joint force and is common to every organization and individual involved in a joint operation.

US Joint Forces Command Glossary



Key purpose is to enable effective and timely decision-making

- **Decrease the decision cycle time of the force and to visualize the course of action**
- **Rapidly take action and track execution**

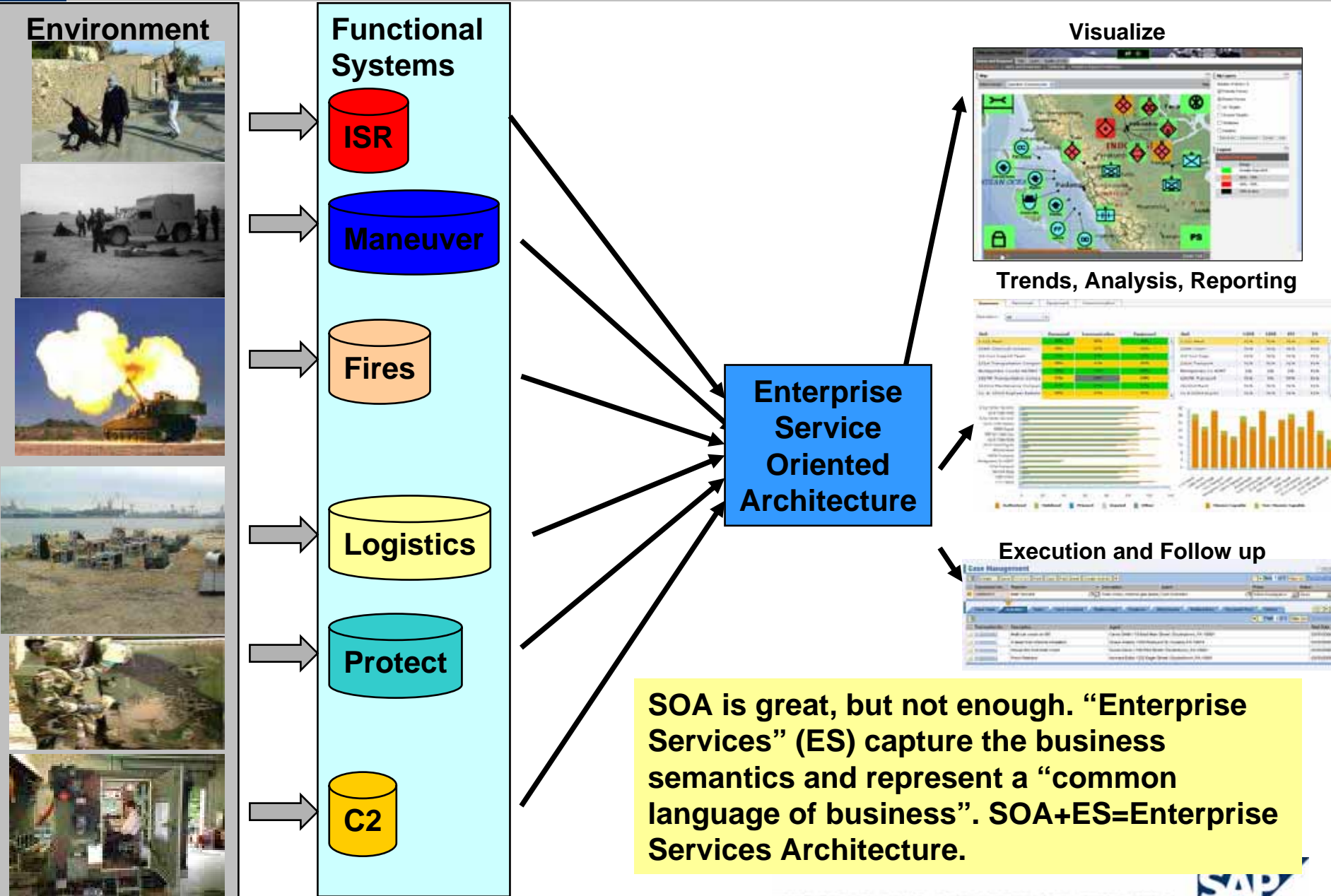
Need to aggregate and synthesize data from multiple sources and systems

Need to present knowledge in a format decision-makers can easily digest, see what is important and use

Building blocks are:

- **COTS technology**
- **Geographic information system (GIS)**
- **Central user interface (portal)**
- **Net-centric environment building on Web services (SOA)**

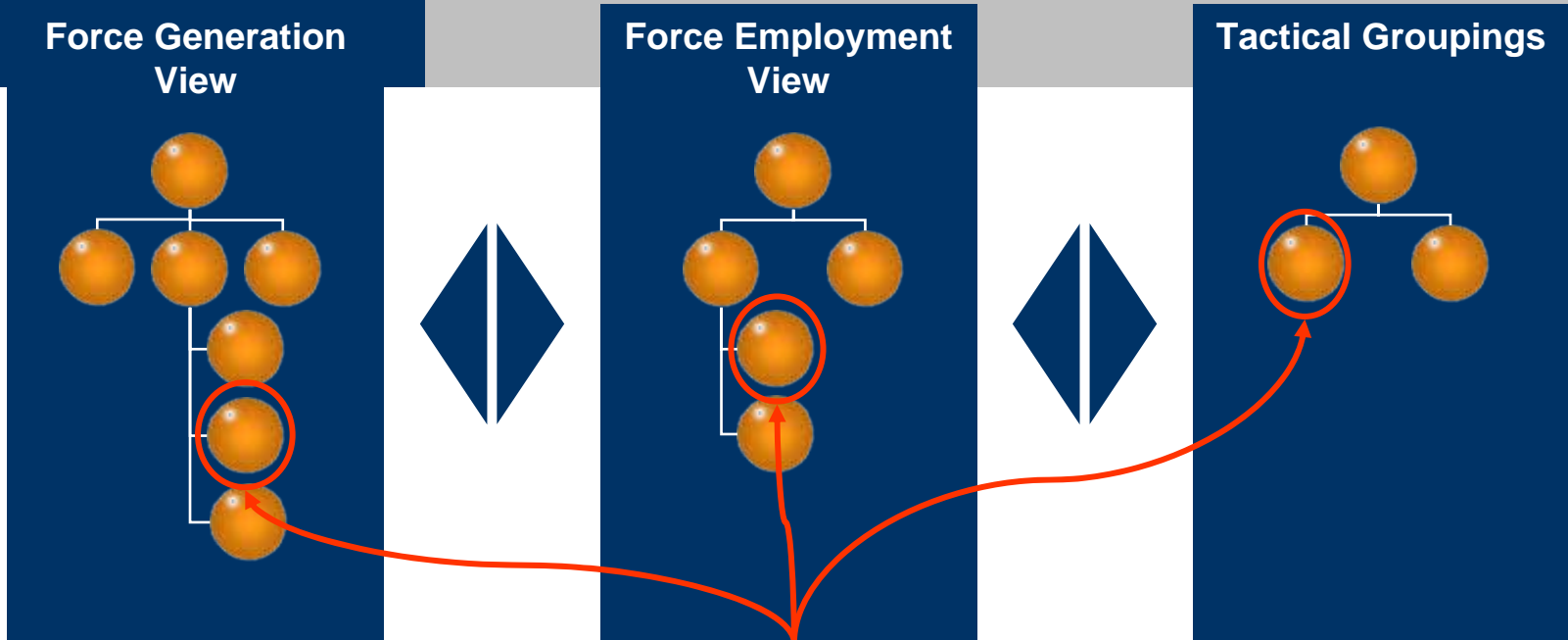
Building the C(R)OP Knowledge Framework





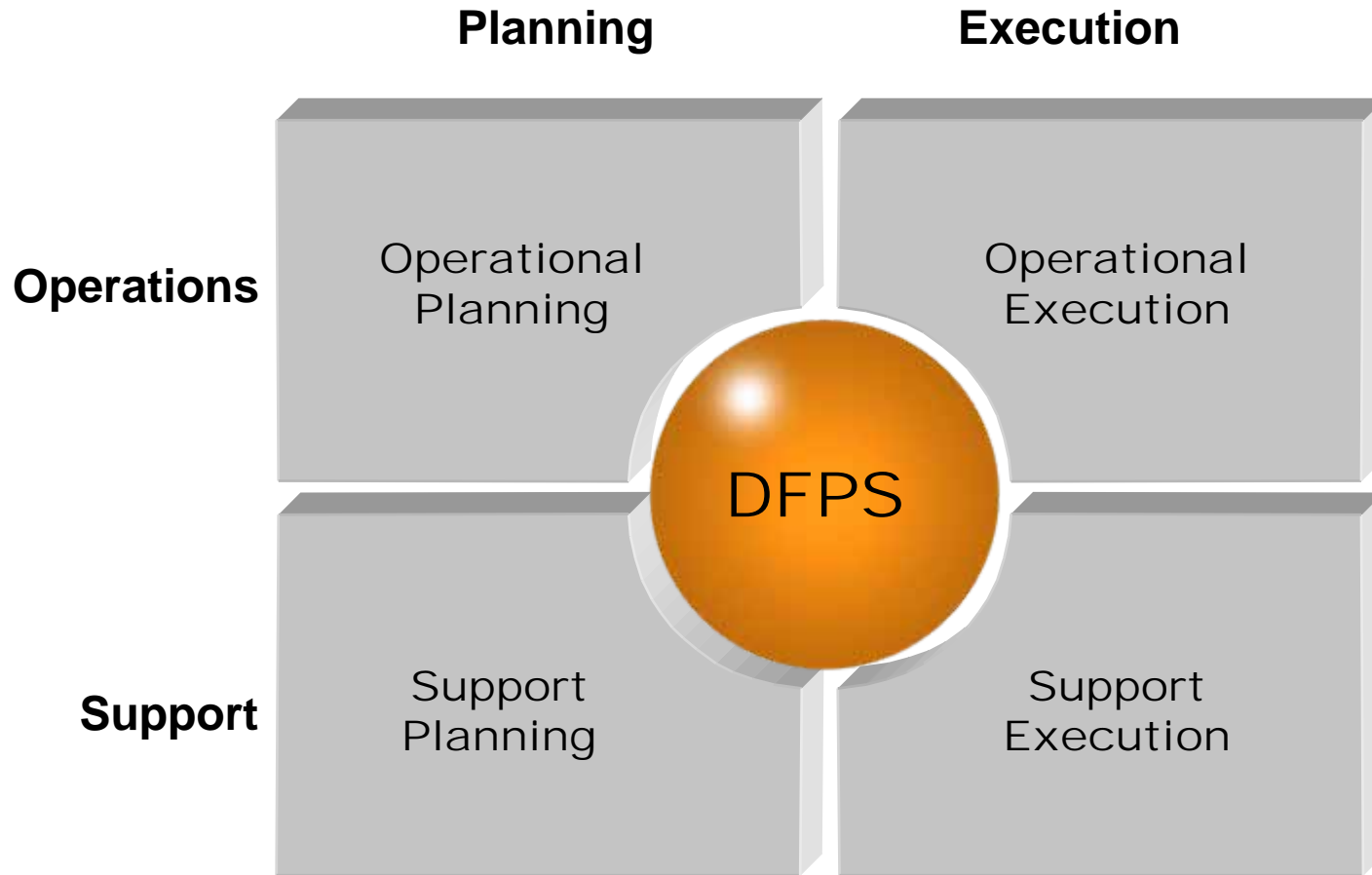
SOA is great, but not enough. "Enterprise Services" (ES) capture the business semantics and represent a "common language of business". SOA+ES=Enterprise Services Architecture.



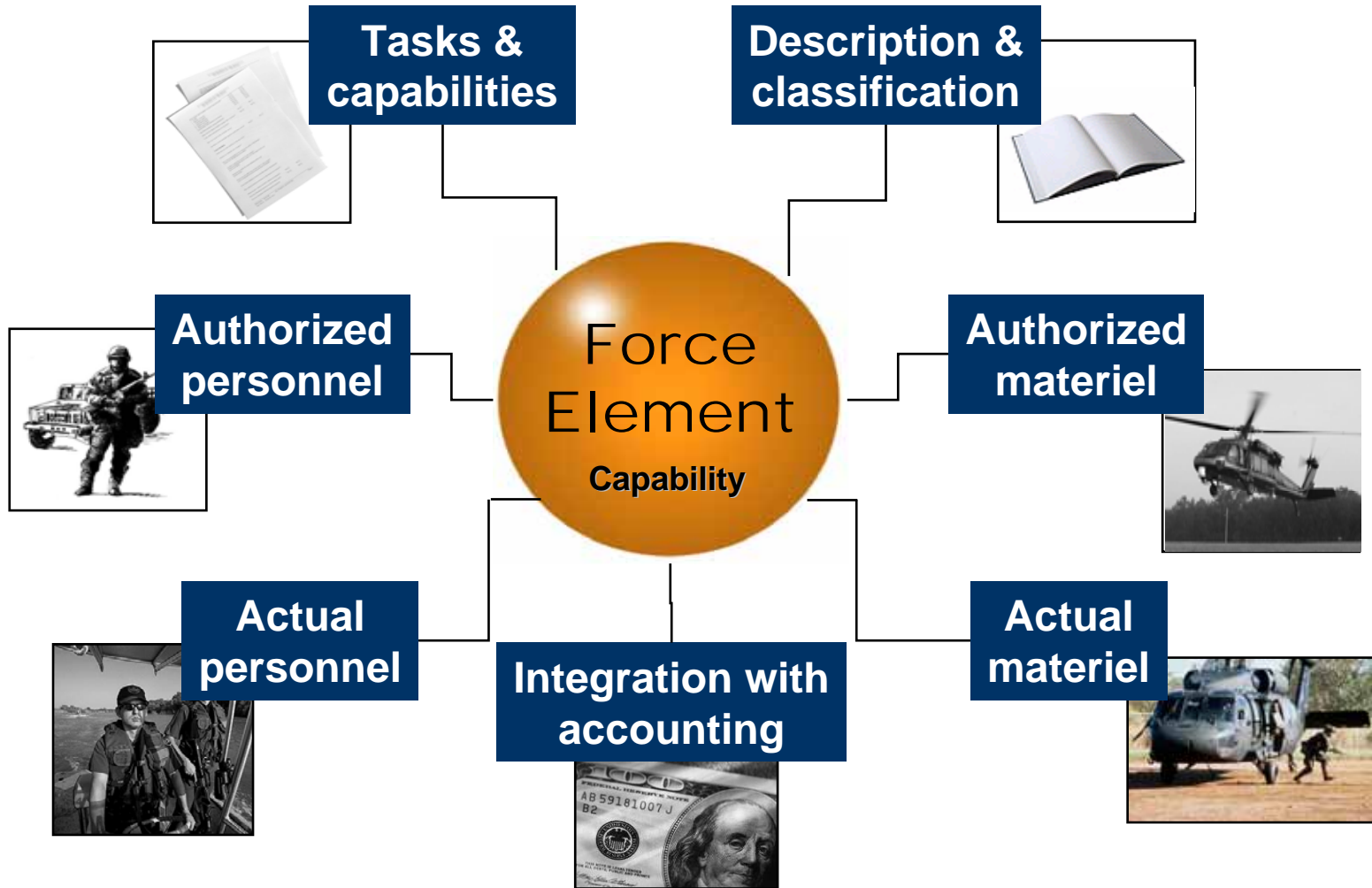
Defense Forces and Public Security



 = Capability
 = Organizational Structures



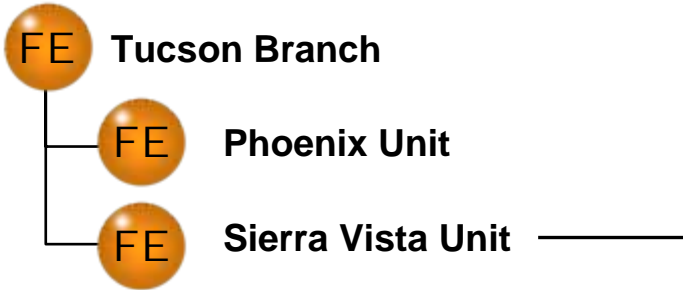
One integrated system to plan, execute and sustain operations



Unique Capabilities for Operational Forces

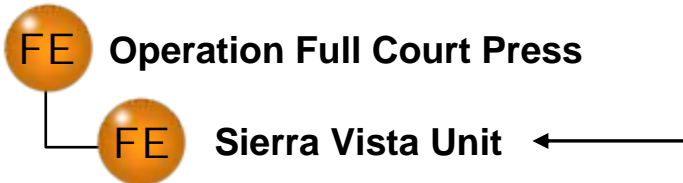
1. Flexible organizational structures with...

Basic Structure



Copy or Link

Operational Structure



2. ...integrated logistics capabilities

Flight Operations

- Flight status board

Line Maintenance

- Aircraft status board
- Mobile maintenance processes

Materials Management

- Return deliveries and equipment loans
- Condition codes, status codes, advice codes, requirement priority
- Mobile supply processes
- Planning, preparation and execution of dangerous goods shipments



Integrating DFPS and the C(R)OP

Display force element status temporarily and geospatially

- Use predictive elements of Business Warehouse to predict status changes
- Show current and projected status
- Show status trends
- Predict when force elements will need to re-supplied or replaced

Find the appropriate force elements to respond to a situation

- Rapidly assess the situation
- Determine capabilities required
- Rapidly locate the nearest force elements with the required capabilities
 - ◆ Can use dispatching solutions such as Genesys to automatically locate and notify force elements
 - ◆ Leverage workflow and DFPS capabilities to rapidly task organize and cross-attach force elements into tailored organizational packages

Common (Relevant) Operating Picture [C(R)OP]

Welcome SLOC Director

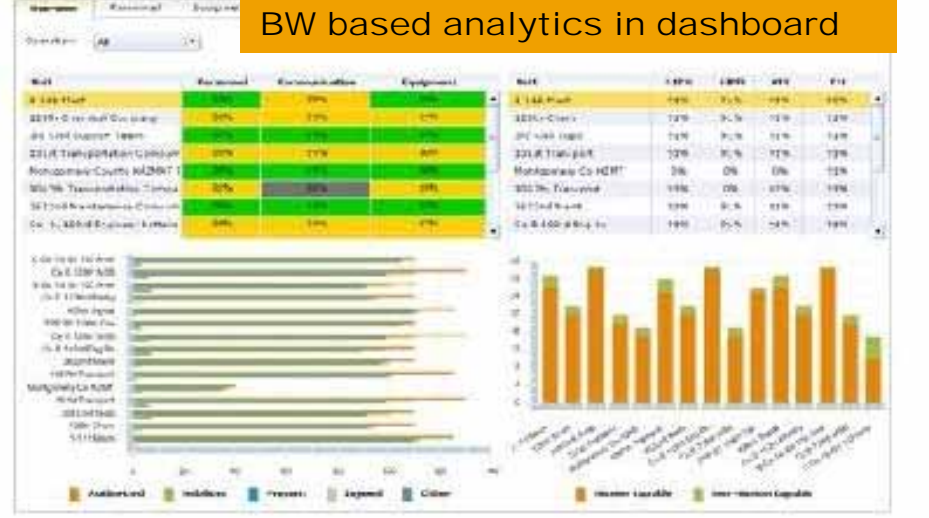
Navigation: Home | Personalized | Log Off

SAP

Search | Advanced Search

Cases | Resources | Home | Map | Reporting

Overview | Interaction Center | Incidents | Cases | Activities | Call Lists | Jet Import



GIS Display (ESRI based, linked to all SAP components)

Case Management

Transaction No. | Episode | Description | Agent

Transaction No.	Episode	Description	Agent	Start Date
01800002	Melrose...	Case by...	...	12/01/2005
01800002	4...	12/31/9999
01800002	12/31/9999
01800002	12/31/9999

Personnel Organizational Basis - Display

Object: 50006821

Force Element: Oper at 1 ons

Start date: 12/01/2005

End Date: 12/31/9999

Planning Status: P1anned

Country: US USA

Organizational Area: 9 Customs-Border Patro

Org. Area Type: Policing Organization

Structure Type: 005 Civilian

Structure Level: Section

Additional Data: SF6A-.....US6

Unit Identifier Code: US9 | 0

Usage Type: P/W

Reference Force Element

DFPS Display

CRM for Event Management

An Example

Welcome SEOC Director

[Help](#) | [Personalize](#) | [Log Off](#)

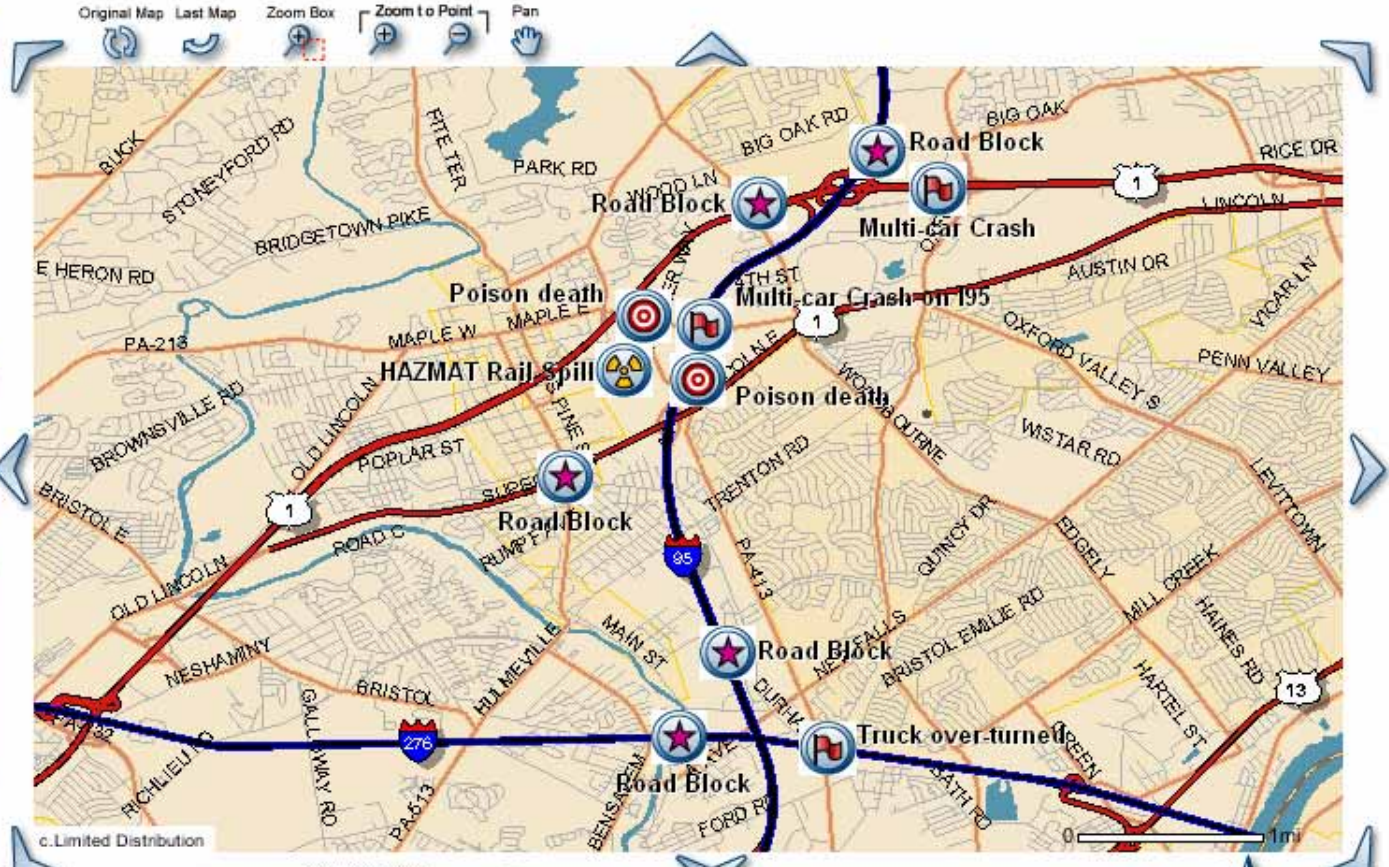


[Collaboration](#) | [Search](#) [Advanced Search](#)

[Cases](#) [Resources](#) [Plans](#) **Map** [Reporting](#)

Map

| History [Back](#) [Forward](#)



A railroad accident releases chlorine gas from 5 tank cars. The accident spawns a major traffic accident on I-95.

Tip: No layer selected

Modeling the Plume

Welcome SEOC Director

[Help](#) | [Personalize](#) | [Log Off](#)

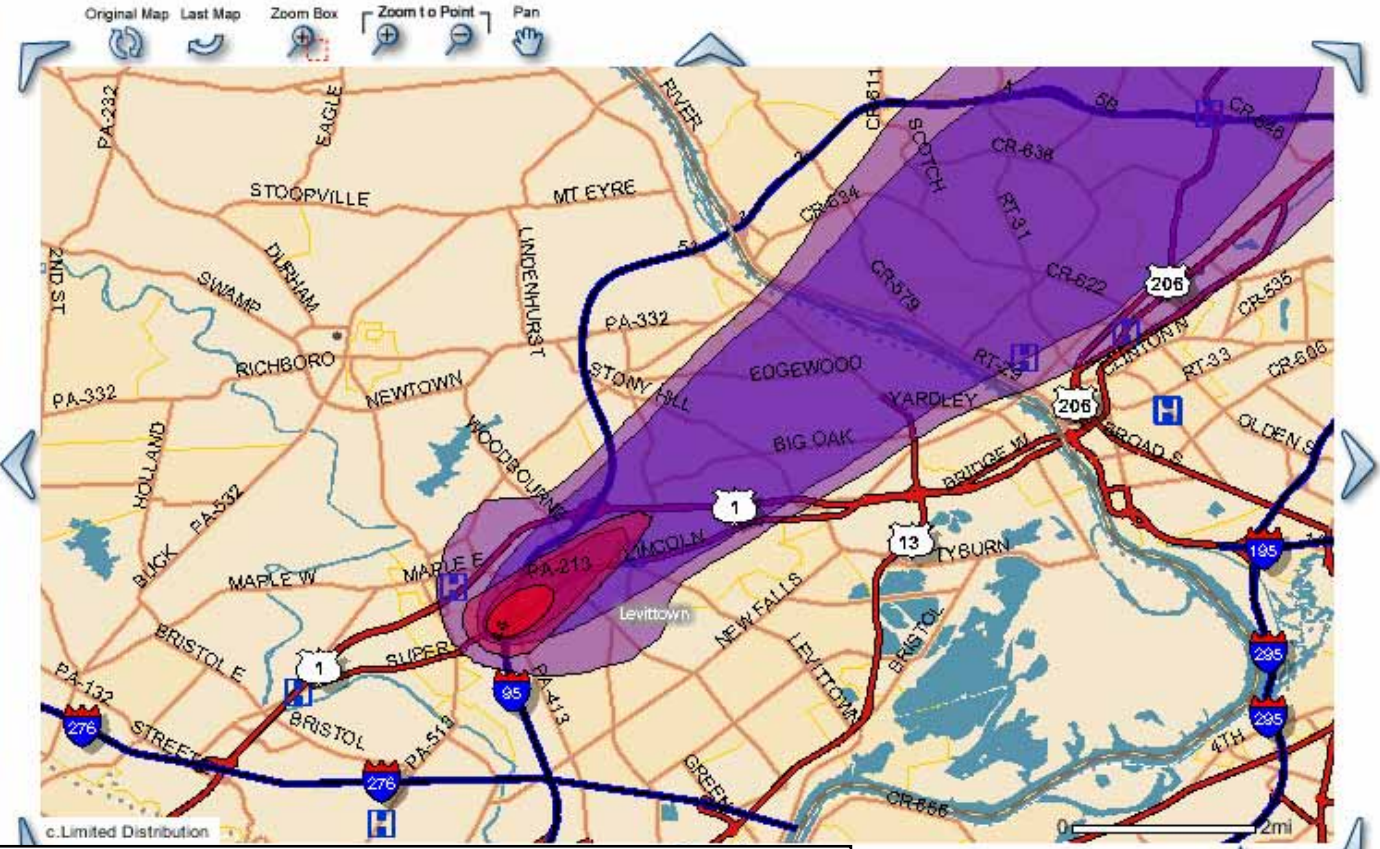


Collaboration | Search [Advanced Search](#)

Cases Resources Plans **Map** Reporting

Map

| History [Back](#) [Forward](#)



Plume analysis.

ip: No layer selected

North



THE BEST-RUN BUSINESSES RUN SAP

An Example

Welcome SEOC Director

[Help](#) | [Personalize](#) | [Log Off](#)

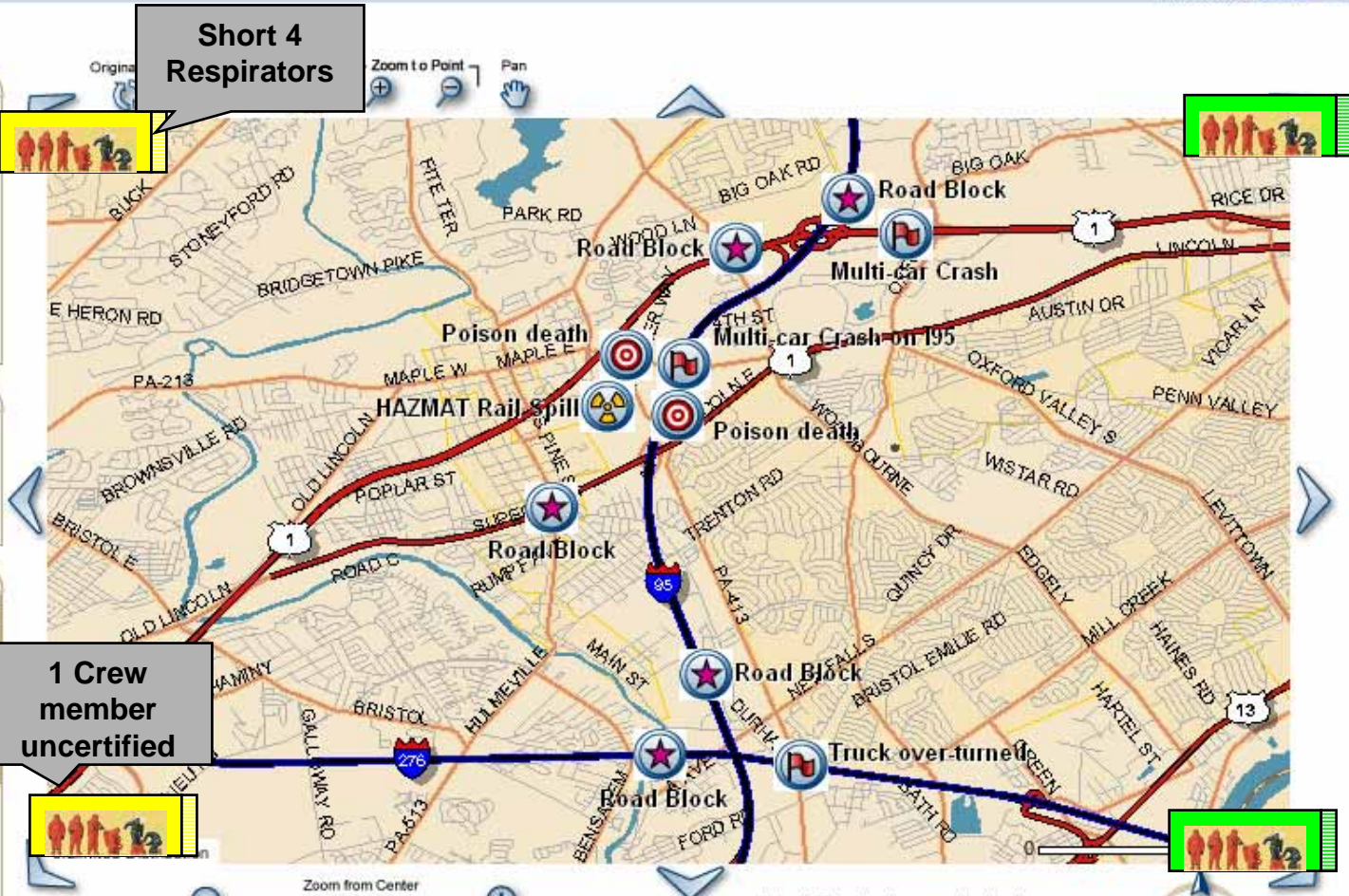


[Collaboration](#) | [Search](#) [Advanced Search](#)

[Cases](#) | [Resources](#) | [Plans](#) | **Map** | [Reporting](#)

Map

| [History](#) | [Back](#) | [Forward](#)



Locate and check the status of HAZMAT crews in the area. Request respirators for the team that is short.

An Example

Welcome SEOC Director

Help | Personalize | Log Off

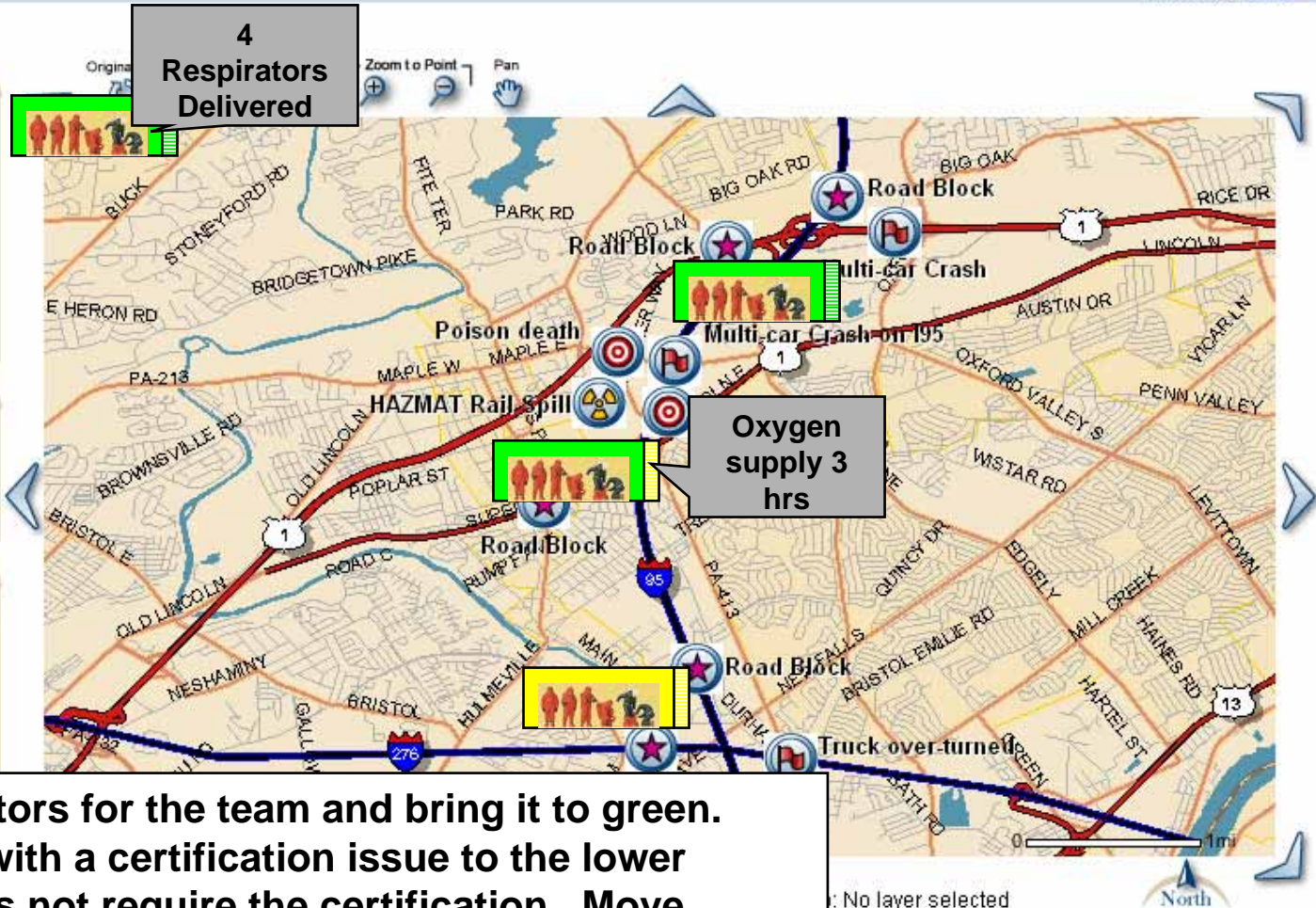


Collaboration | Search | Advanced Search

Cases | Resources | Plans | **Map** | Reporting

Map

History | Back | Forward



Receive respirators for the team and bring it to green. Send the team with a certification issue to the lower hazard that does not require the certification. Move qualified teams to the chlorine spill.

An Example

Welcome SEOC Director

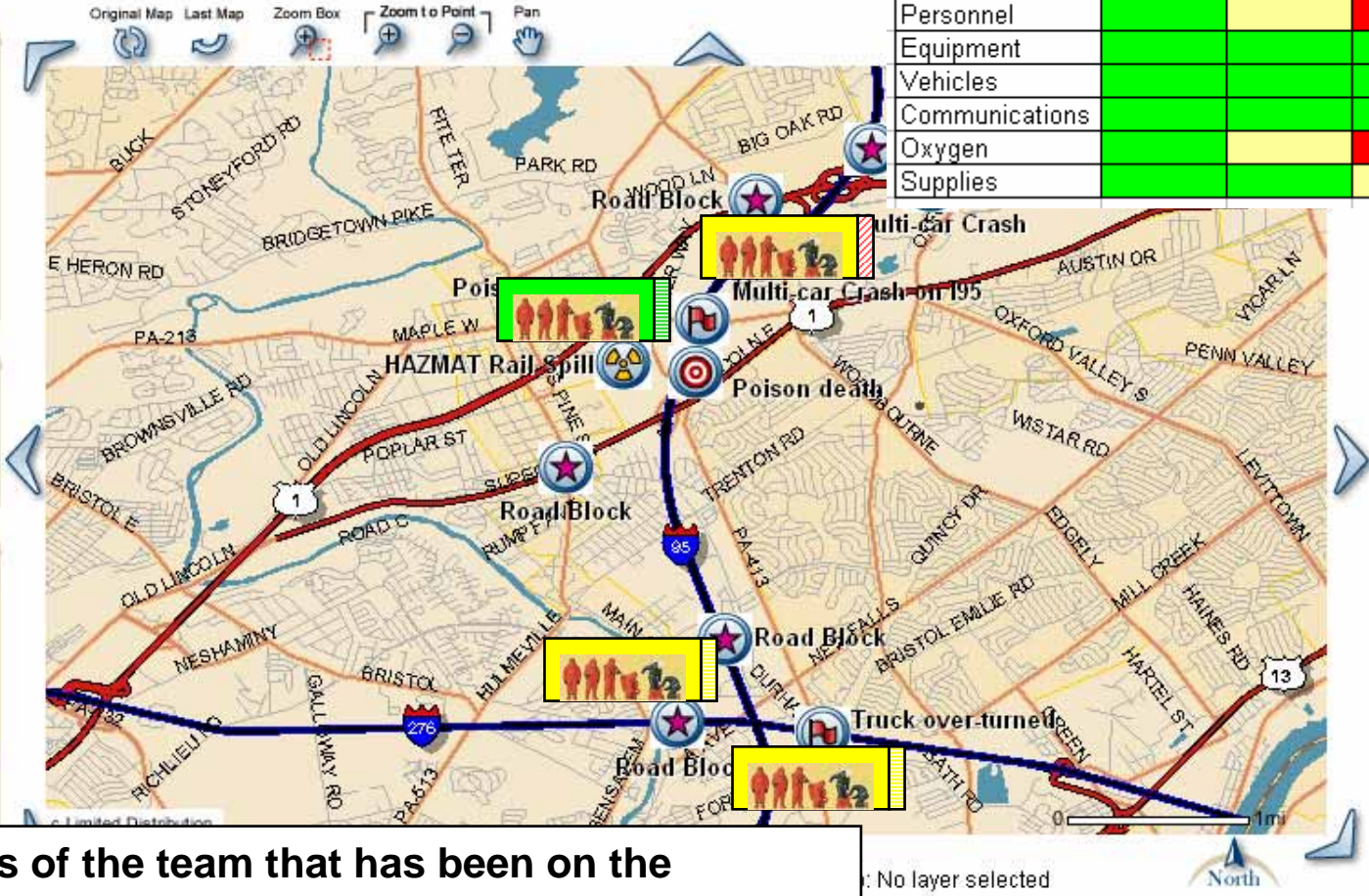
Help | Personalize | Log Off



Collaboration | Search | Advanced Search

Cases | Resources | Plans | **Map** | Reporting

Map



Montgomery County HAZMAT Team			
	Prior	Current	Projected
Personnel	Green	Yellow	Red
Equipment	Green	Green	Green
Vehicles	Green	Green	Green
Communications	Green	Green	Green
Oxygen	Green	Yellow	Red
Supplies	Green	Green	Yellow

Check the status of the team that has been on the chlorine spill the longest. Note they will need to be pulled out ASAP. Locate more teams if required.



DFPS enable C(R)OP allows:

- Integrated situational awareness and analysis in the C(R)OP
- Quickly locate and employ the appropriate assets
 - ◆ Track asset status
 - ◆ Project asset status
- Improved decision-making
 - ◆ Right information at the right time
 - ◆ Right format
 - ◆ CONOP
 - ◆ CONPLAN
 - ◆ Tailored structures

