



# Spatial Data as Strategic Information within PEPFAR

Nathan J. Heard, MSc

2007 ESRI Federal User Conference

Washington, DC

January 11, 2007

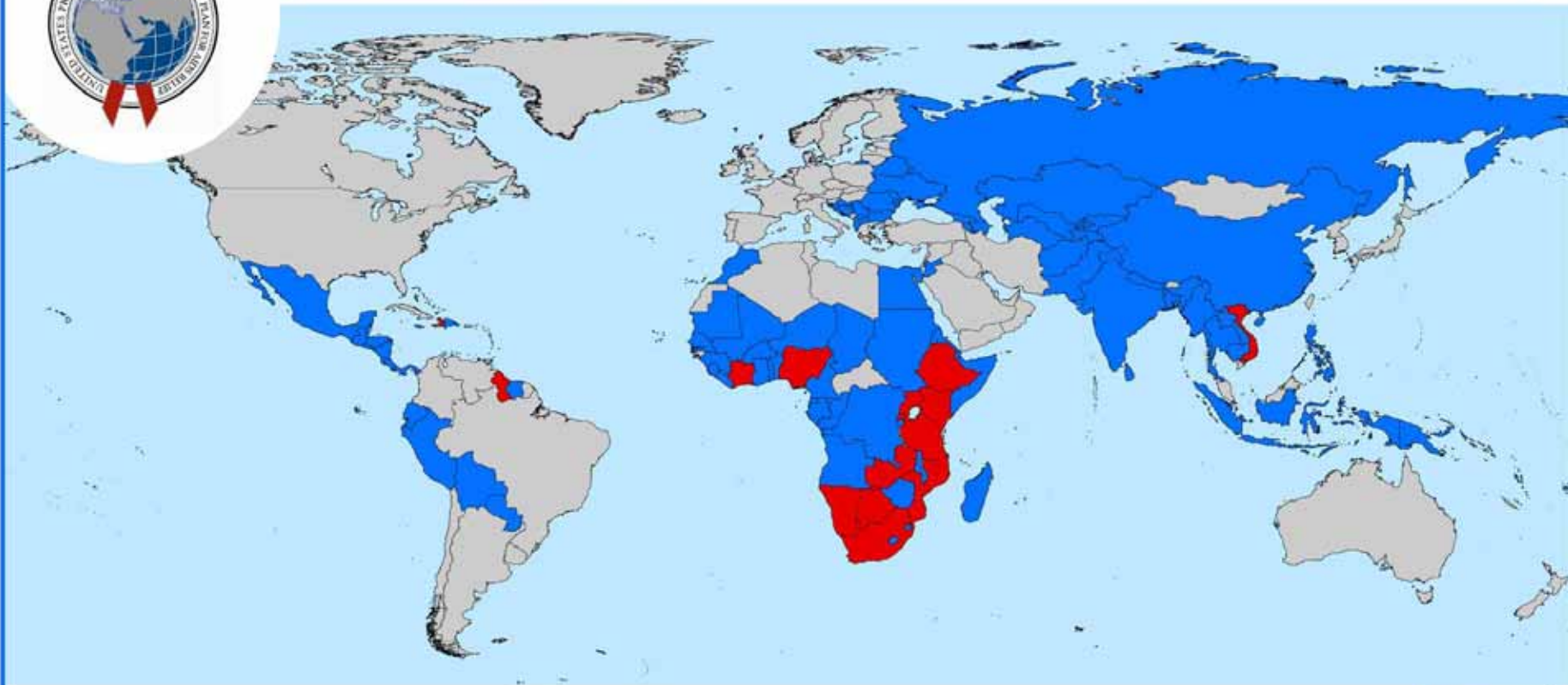


# Disclaimer



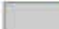
The views and conclusions contained in this presentation are those of the author and do not necessarily reflect the policies of the United States Government. Any use of trade, product, or firm names in this presentation is for descriptive purposes only and does not imply endorsement by the U.S. Government.



## U.S. President's Emergency Plan for AIDS Relief (PEPFAR) Worldwide Activities July 2006



### U. S. Government International HIV/AIDS Activities

-  Focus Countries
-  Other U.S. Bilateral Efforts
-  No Activities Present

This map includes all HIV/AIDS activities funded through the following USG agencies: Department of State, U.S. Agency for International Development, Department of Defense, Department of Commerce, Department of Labor, Department of Health and Human Services, and Peace Corps. This does not include activities funded through the U.S. Department of Agriculture.







# PEPFAR Strategic Information

- Report on progress toward achieving Emergency Plan targets
- Provide accountability for use of Emergency Plan resources
- Improve Emergency Plan programming and delivery of services
- Contribute to the development of national monitoring and evaluation systems in each focus country
- Build global capacity for use of SI in combating HIV/AIDS



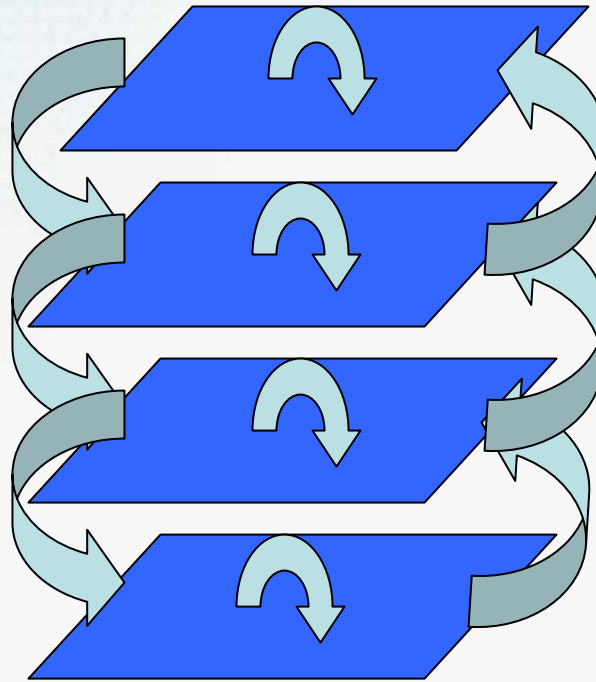
# Strategic Information Flow and Spatial Scale

International

National

District

Local





# Two Million People on Treatment: Focus Country Progress towards End of Plan Goal, FY2004



**Percent of Goal**

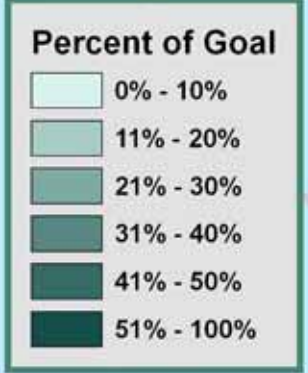
- 0% - 10%
- 11% - 20%
- 21% - 30%
- 31% - 40%
- 41% - 50%
- 51% - 100%

Includes both upstream and downstream USG results. Boundary representation is not necessarily authoritative.

**HIU**  
HUMANITARIAN INFORMATION UNIT  
U.S. Department of State  
hiu\_info@state.gov  
http://hiu.state.gov



# Two Million People on Treatment: Focus Country Progress towards End of Plan Goal, FY2005



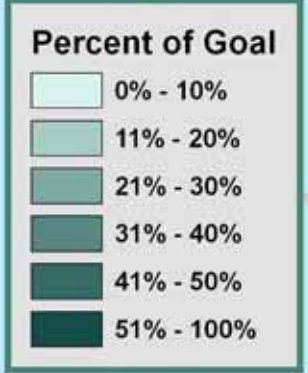
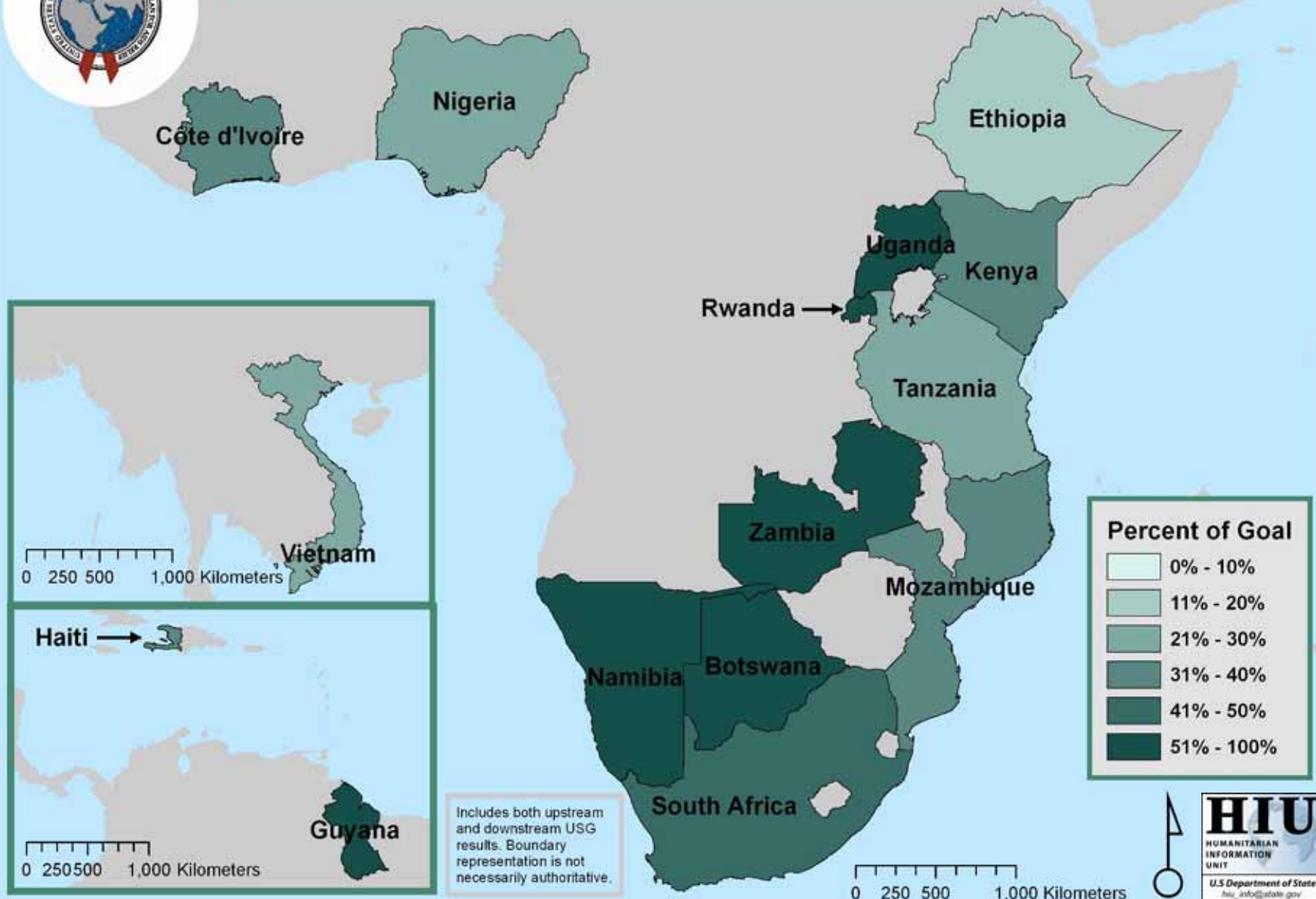
Includes both upstream and downstream USG results. Boundary representation is not necessarily authoritative.







# Two Million People on Treatment: Focus Country Progress towards End of Plan Goal, FY2006

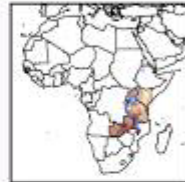
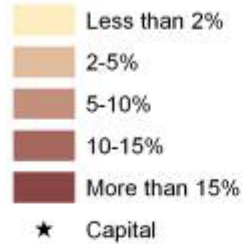


Includes both upstream and downstream USG results. Boundary representation is not necessarily authoritative.

# HIV Prevalence by Gender, 2002-2004

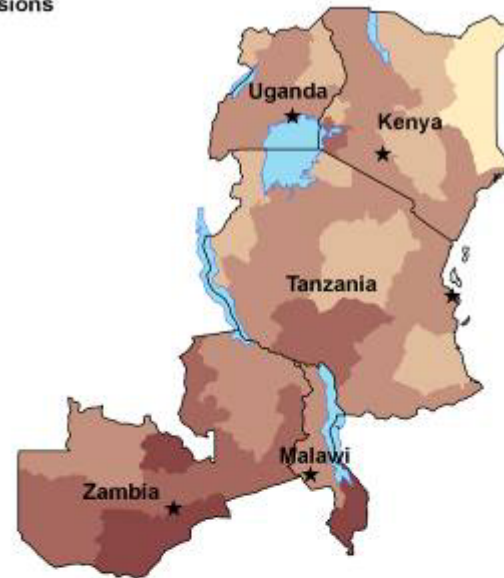
Data Aggregated to First Order Administrative Divisions

## Percent HIV Positive

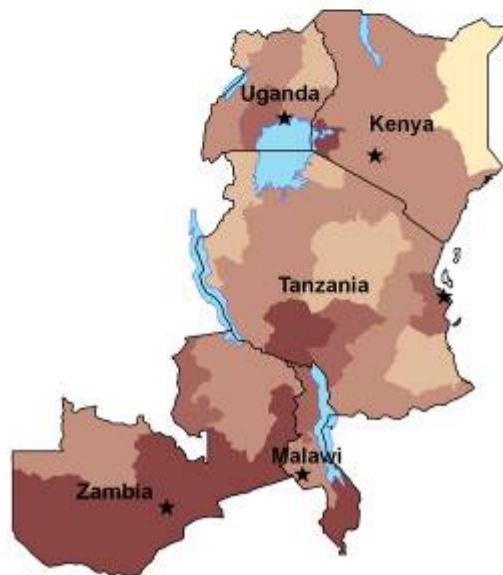


Note: Source years are not concurrent. Boundaries are not necessarily authoritative. Source: Kenya DHS 2003; Malawi 2004; Tanzania HIS 2004; Uganda DHS 2004; Zambia DHS 2002.

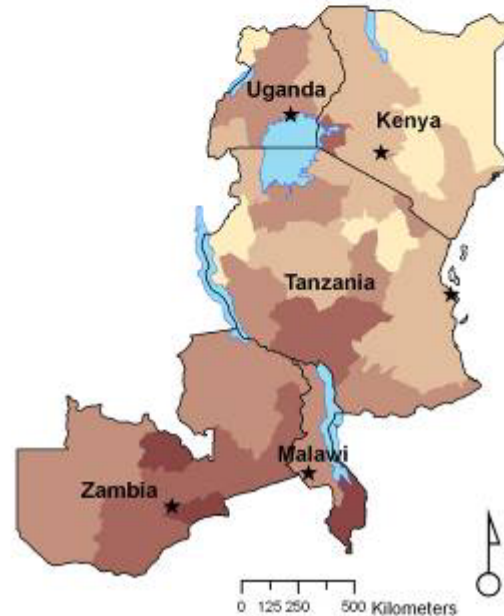
## General Population



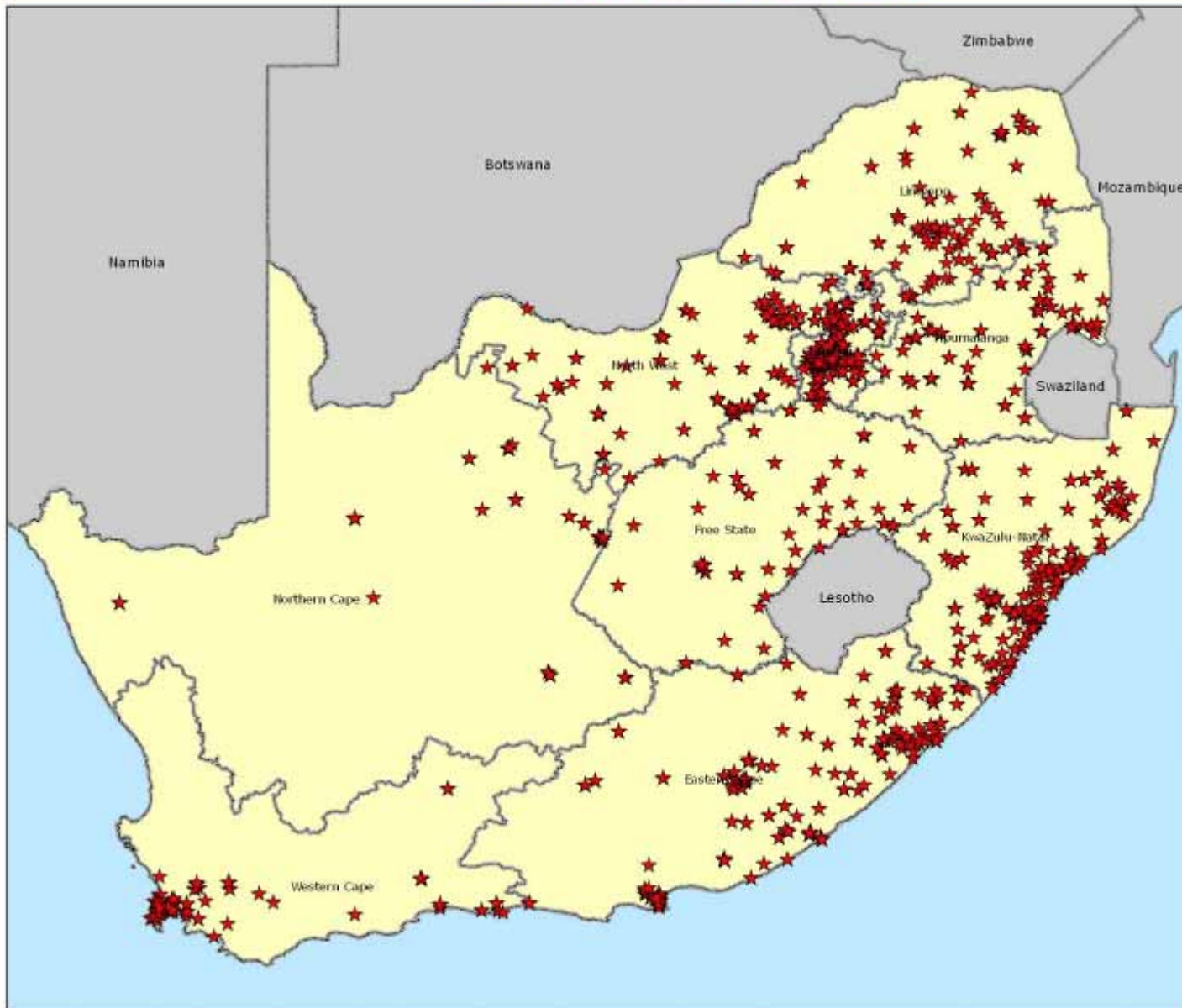
## Female



## Male



# Emergency Plan - All Sites



Distribution of Emergency Plan Sites by province within South Africa

September 2006

## Legend

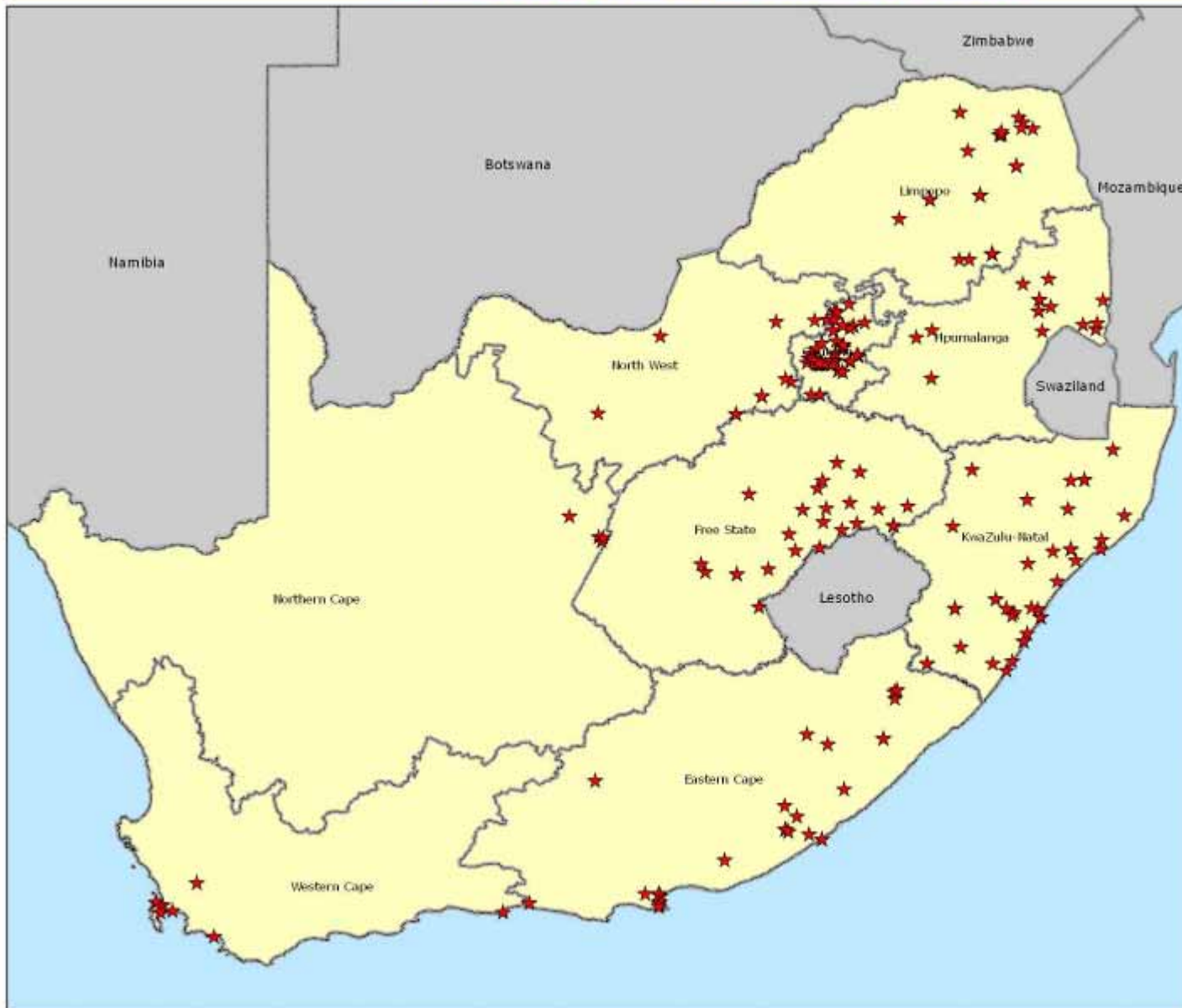
- ★ National Sites
- Provinces
- Adjacent Countries

Map layers projected using GCS Hartebeesthoek 1994 projection and datum.



0 35 70 140 210 280  
Km

# Emergency Plan - National OVC Sites



Distribution of Emergency Plan Sites by province within South Africa

September 2006

## Legend

- ★ National Sites
- Provinces
- Adjacent Countries

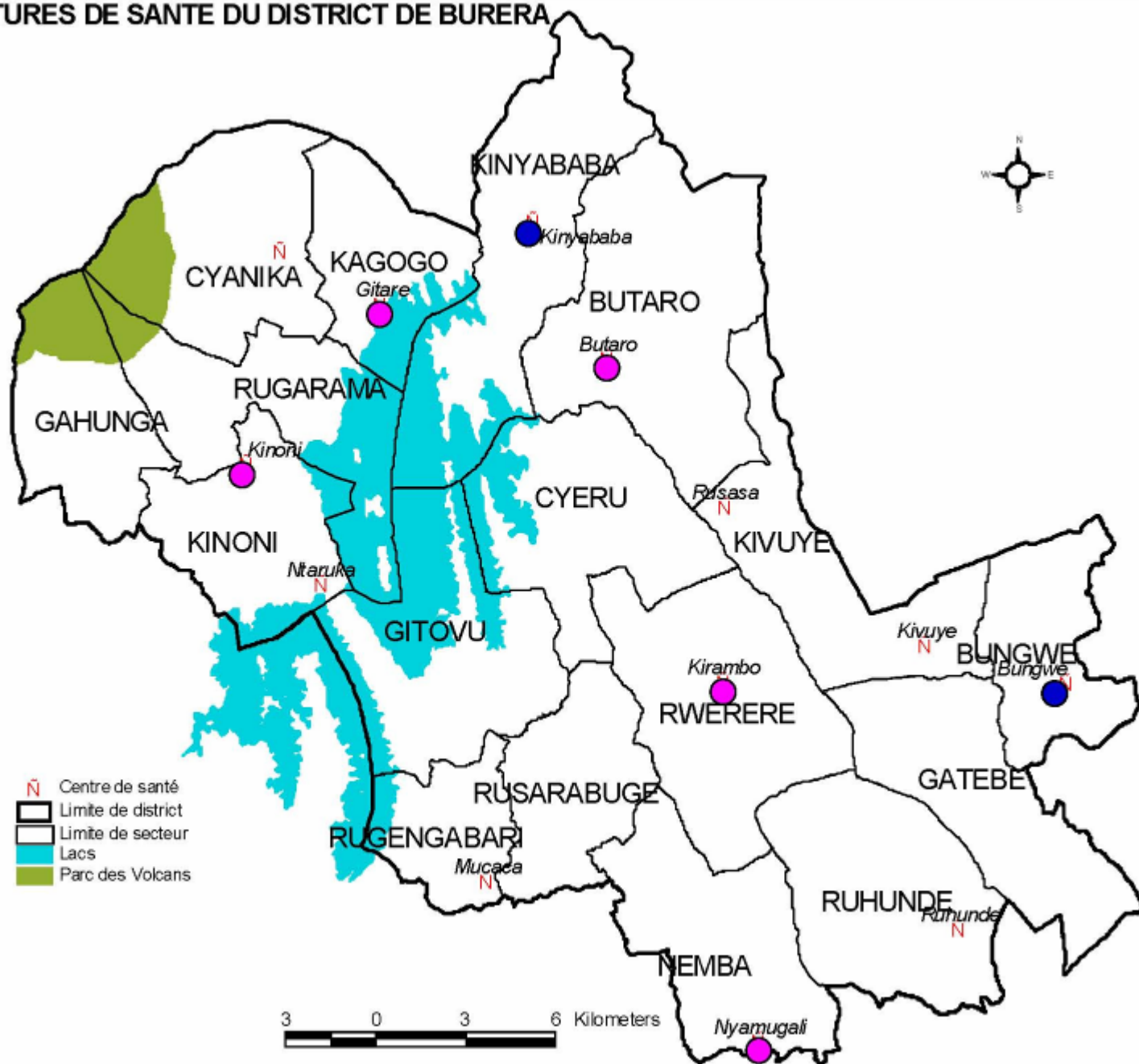
Map layers projected using GCS Hartebeesthoek 1994 projection and datum.



0 35 70 140 210 280 Km

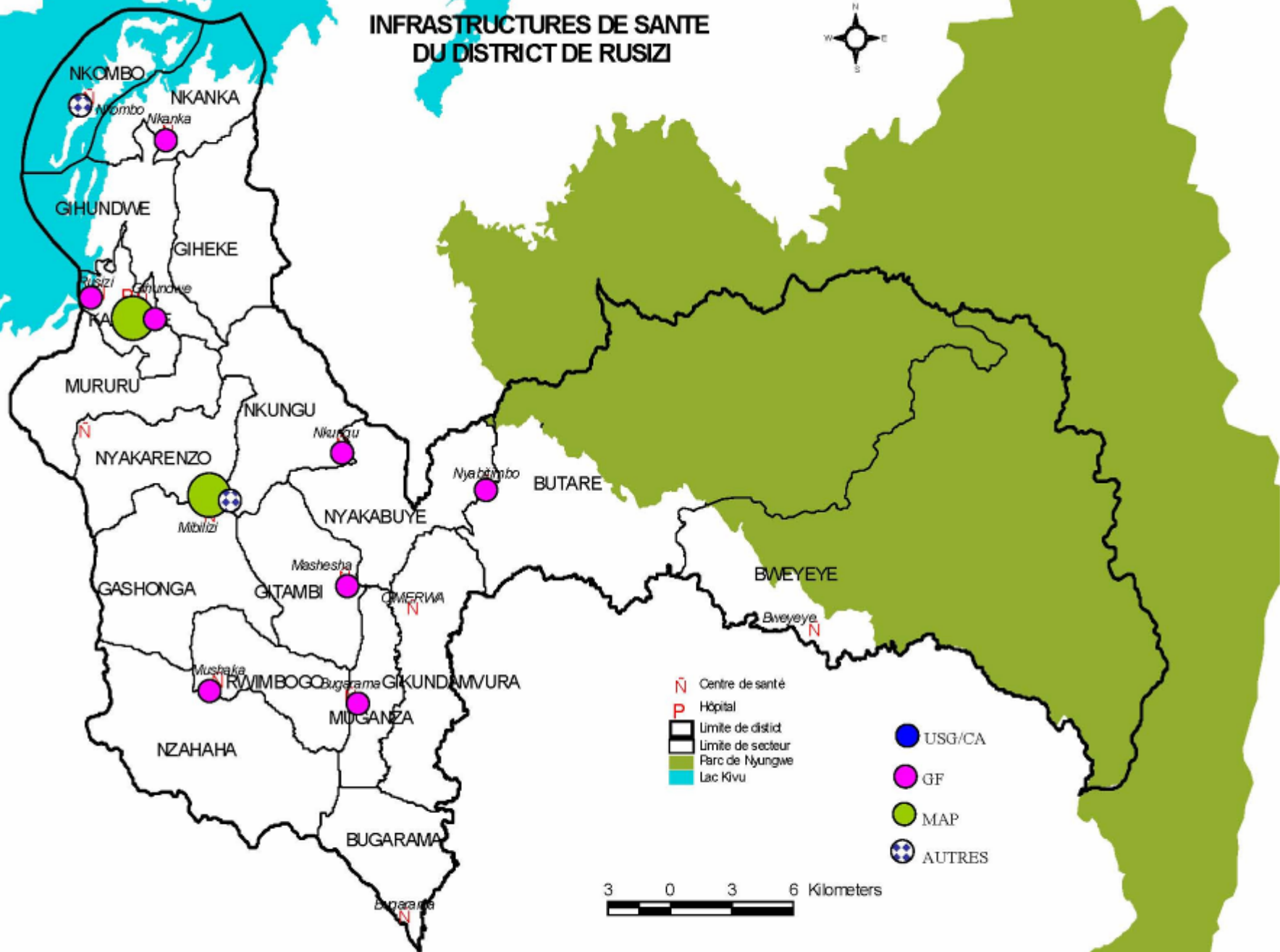
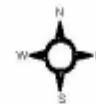
# INFRASTRUCTURES DE SANTE DU DISTRICT DE BURERA

- USG/CA
- GF
- MAP
- + AUTRES

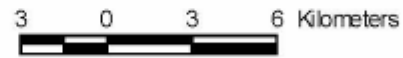


- N Centre de santé
- Limite de district
- Limite de secteur
- Lacs
- Parc des Volcans

# INFRASTRUCTURES DE SANTE DU DISTRICT DE RUSIZI



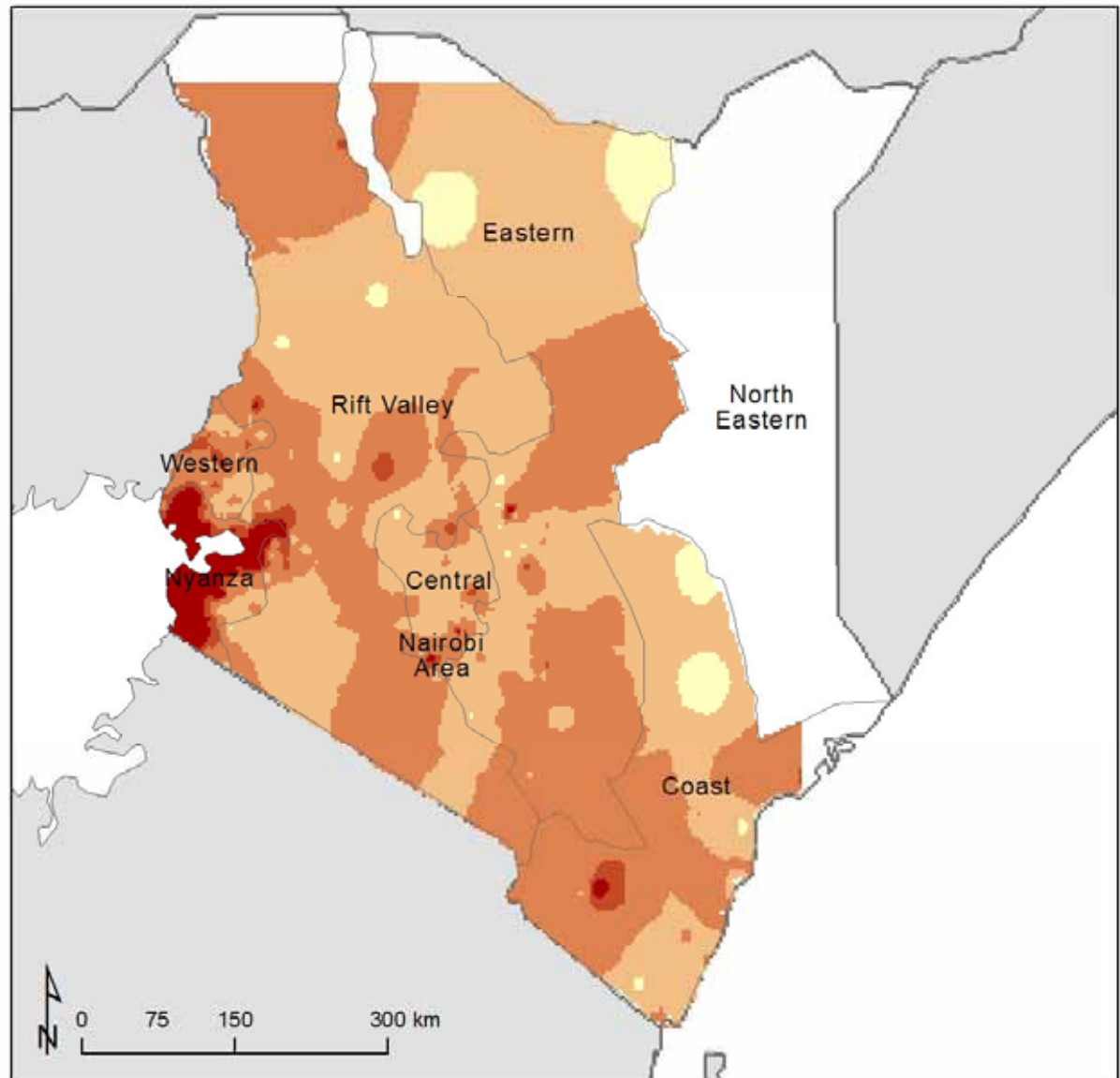
- N Centre de santé
- P Hôpital
- ▬ Limite de distid
- ▬ Limite de secteur
- Parc de Nyungwe
- Lac Kivu
- USG/CA
- GF
- MAP
- AUTRES



# Estimated Probability of HIV Prevalence by Region, Kenya, 2003

## Estimated Probability

- Less than 2%
- 2 - 5%
- 5 - 10%
- 10 - 15%
- More than 15%
- No data



# Overview of Issues Concerning Confidentiality and Spatial Data

MEASURE GIS Working Group White Paper



**DRAFT – NOT FOR DISTRIBUTION**

Fall 2006





The United States President's  
Emergency Plan for AIDS Relief

[LOGIN](#)

## PEPFAR Spatial Data Repository Home Page

[HOME](#)

[DATA AVAILABLE](#)

[LINKS](#)

The PEPFAR Spatial Data Repository is a public resource provided by the U.S. President's Emergency Plan for AIDS Relief. The purpose of the repository is to facilitate the use of geographic information systems (GIS) to improve the quality and coverage of care for people living with HIV.





# Capacity Building





# For further information:

Nathan J. Heard, MS  
Public Health Project Manager  
Humanitarian Information Unit  
Bureau of Intelligence and Research  
US Department of State  
202.203.7788; [HeardNJ@state.gov](mailto:HeardNJ@state.gov)  
<http://hiu.state.gov/>  
<http://www.PEPFAR.gov>