

Federal GIS Conference

February 25–27, 2013 | Washington, D.C.



ArcGIS for Mobile Devices: An Overview

Jeff Shaner

Bonnie Stayer



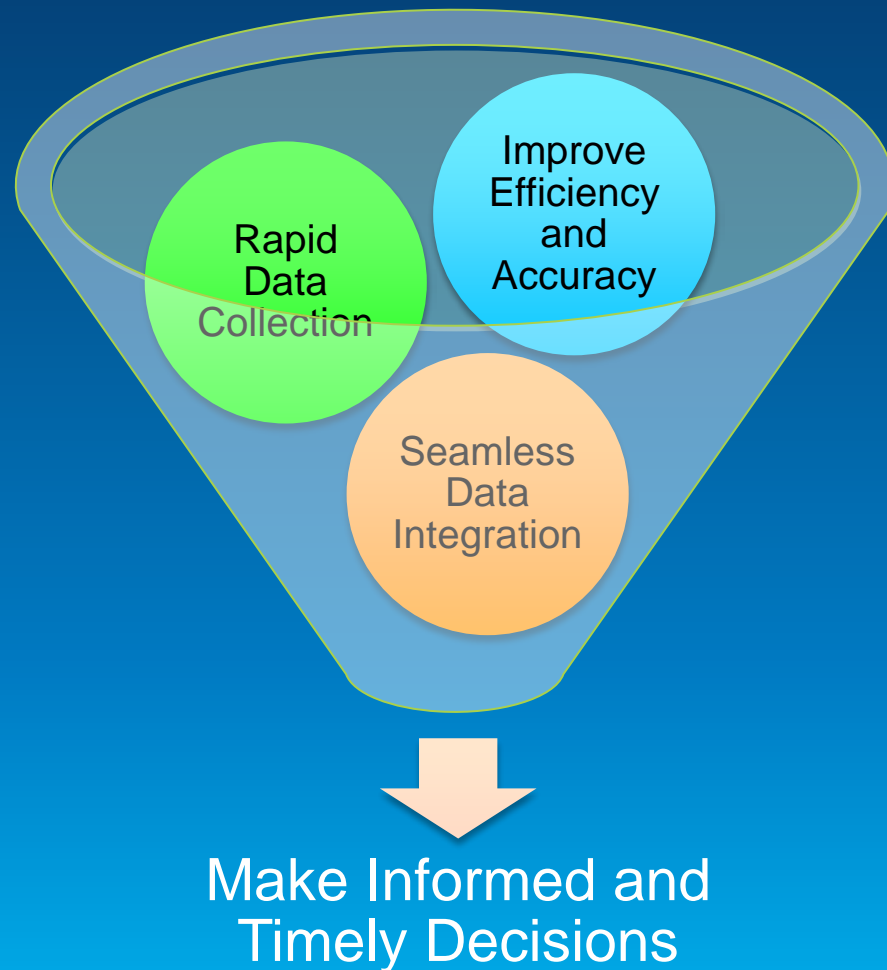
Agenda

- **Esri Positioning and Key Benefits**
- **Your Mobility Strategy**
- **Q & A**

Positioning and Benefits

Key Benefits of Mobile Solutions

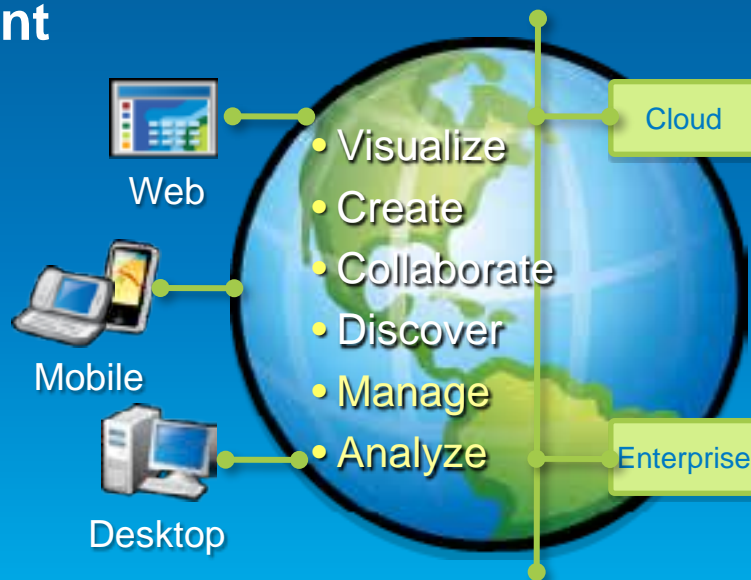
Leverage your investment in ArcGIS



ArcGIS is a Complete System

Managing and working with geographic information

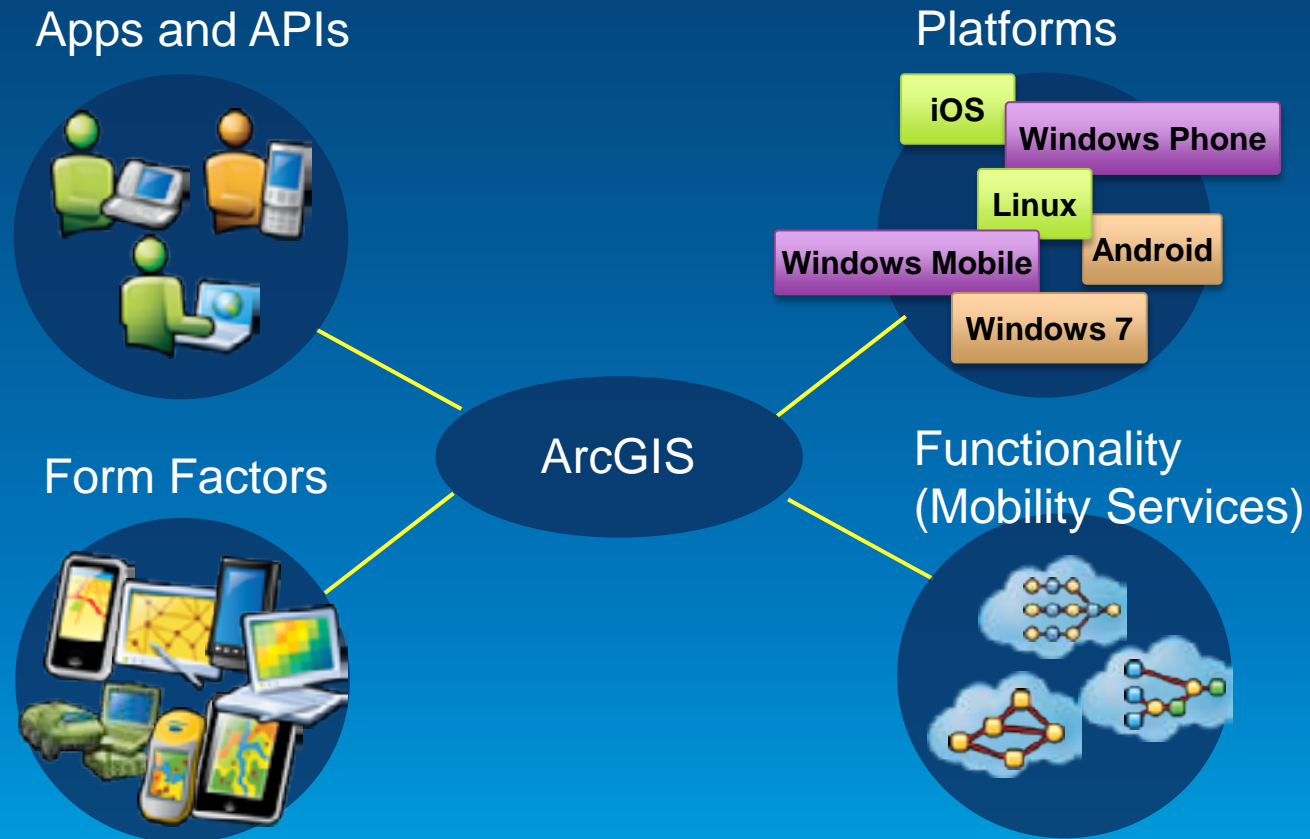
- Online (public or private cloud)
- Server (on premises or private cloud)
- Desktop
- Mobile/devices
- Content



Many deployment options

Esri Mobile Technologies

Mobile capabilities of the ArcGIS system



Device Platforms

**Windows
Mobile**

Apps
ArcGIS

Runtime SDK
.NET



Windows

Apps
ArcGIS, AGX

Runtime SDK
WPF, Java



**Windows
Phone**

Apps
ArcGIS

Runtime SDK
Silverlight



iOS

Apps
ArcGIS

Runtime SDK
Objective C



Android

Apps
ArcGIS

Runtime SDK
Java



Linux

Runtime SDK
Java



Your Mobile Strategy

Mobile Technology for the Knowledge Worker



Mobile Technology for the Knowledge Worker



Field Operations

5 Key Workflows

1. Replace paper map books
2. Map infrastructure
3. Maintain infrastructure
4. Replace paper surveys
5. Respond to events



Capabilities

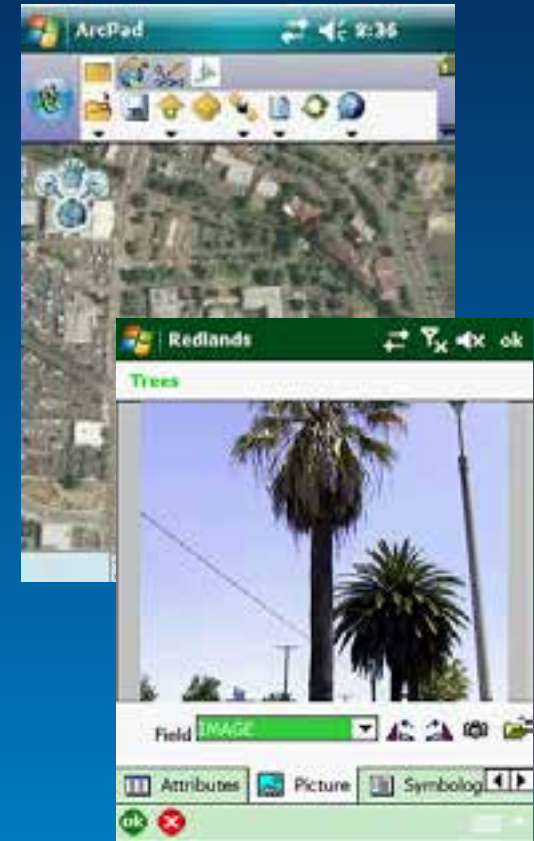
Disconnected use
Data Entry Forms
Location Tracking
Routing and Nav
Intelligent Search
Field Sync
High Accuracy GPS
Assigned Tasks
...

Platforms

Rugged Handhelds
Laptops
Tablets
Smartphones

ArcPad

- Full Featured Mobile GIS App
- Ad-hoc data collection projects
- High accuracy GPS
- Configurable
- Custom forms
- Fully Disconnected
- Users typically need GIS Training

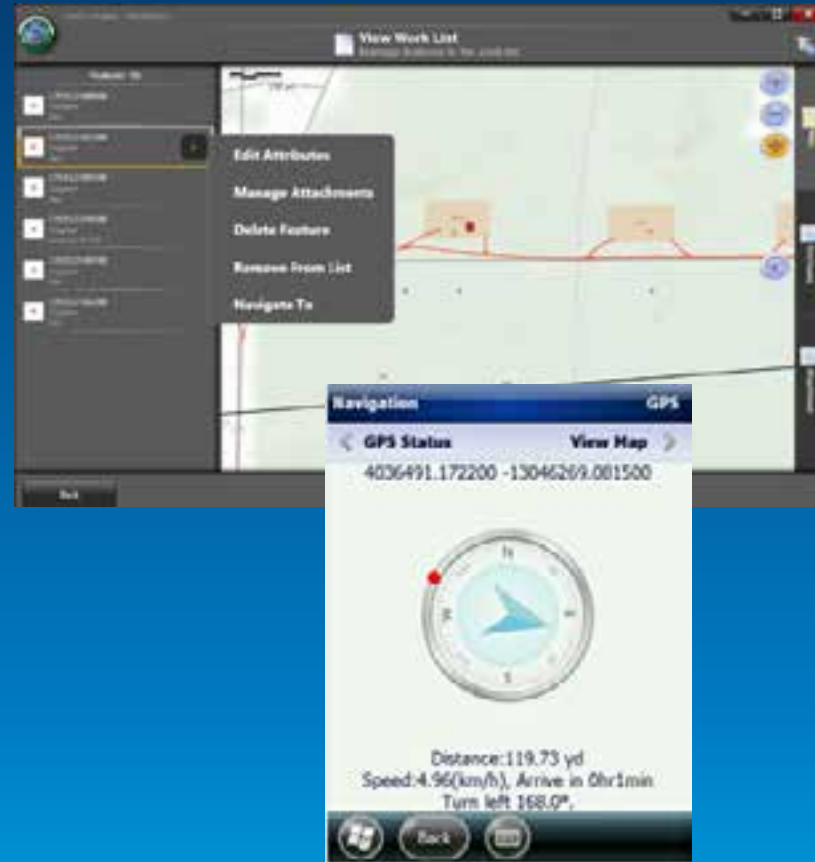


Windows 7/8 Laptops

Windows Mobile handhelds

ArcGIS for Windows Mobile

- Configurable workflows
- High accuracy GPS
- Custom forms
- Fully disconnected
- ArcGIS Online/ArcGIS Server Packaging and Deployment
- Users typically need little training
 - .NET/CF API for Windows Tablet/Mobile
 - Applications are extensible!



Windows 7/8 Laptops

Windows Mobile handhelds

Trimble Positions

- **Enhances data collection capabilities**
 - Ensures Positional accuracy
 - Supports post-processing of GPS positions
 - Enables VRS/RTC connection to corrected positions
 - Geo Explorer series, Juno series and Nomad devices
- **ArcGIS for Windows Mobile**
 - Extends ArcGIS field app (Windows Mobile platform only)
 - Extends SDK
- **ArcPad**
 - GPS Correct Extension



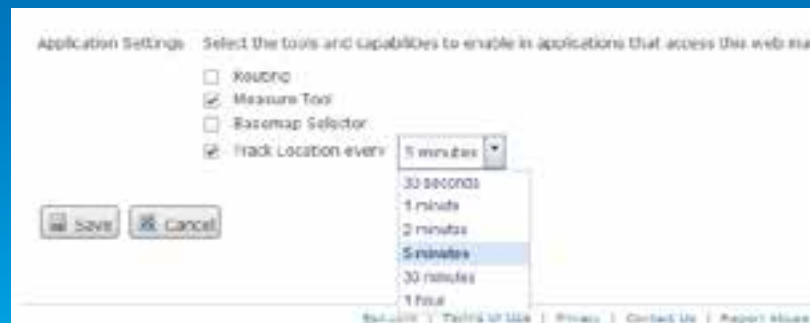


Demo

Bonnie Stayer

Collector

- Collect new GIS features using map or GPS
- Complete intelligent data entry forms
- Attach photos and video
- Find places and points of interest
- Get driving directions to places and features
- Measure distance and area
- Location tracking



iPhone, Android Phone devices



Demo

Bonnie Stayer

Mobile Technology for the Knowledge Worker



Planning and Logistics

3 Key Workflows

1. Monitor and Manage Operations
2. Share plans
3. Present to stakeholders



Capabilities

Live maps
Graphs
Indicators
Charts
Presentations
Story telling
Redlining
Dispatching
Sharing
...

Platforms

Tablets
Laptops
Smartphones

Operations Dashboard

Monitor day to day operations or events

- Role-based access, configurable
- Widgets
 - Bar Charts
 - Gauges
 - Histograms
 - Indicators
 - Lists
 - Details
- Monitor operations in a control center
- Provide executive view on laptops, touch screen devices



Multi-monitor use



Single-monitor use

ArcGIS App

Map viewing and display

- Role-based access
- View and Share Maps
- ArcGIS Online/ArcGIS Server access
- Popups
- Search
- Redlining
- Online access only





Demo

Bonnie Stayer

Mobile Technology for the Knowledge Worker



Public Engagement

3 Key Workflows

1. Tell Stories
2. Inform Citizens
3. Crowd Source information



Capabilities

Live maps
Graphs
Indicators
Charts
Presentations
Story telling
Redlining
Data Collection
Sharing

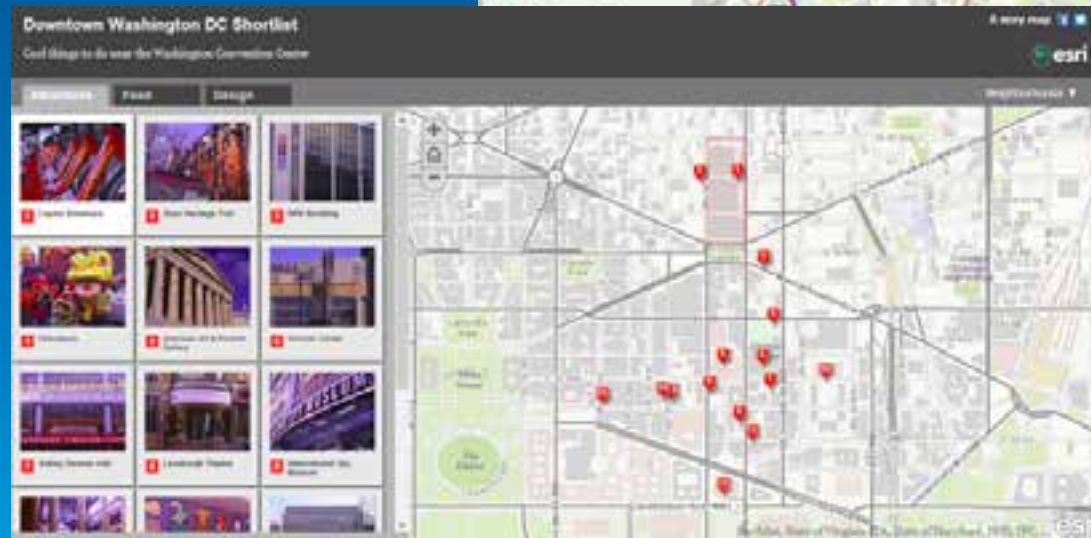
...

Platforms

Tablets
Laptops
Smartphones
Web browsers

ArcGIS Online Web Application Templates

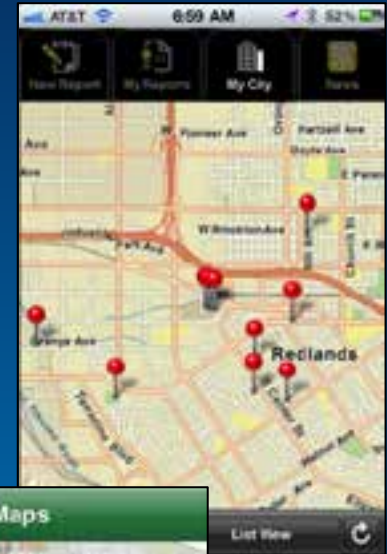
- Standard Viewers
- Story Telling Viewers



ArcGIS Runtime SDKs and Web APIs

Native ArcGIS Runtime SDKs

- Build focused, branded applications
- Rapid development with ArcGIS Online





Demo

Bonnie Stayer

Don't Miss These Attractions

In the GIS Solutions EXPO

- Exhibitors
- I am GIS Photo Booth & Trading Cards
- Hands-On Learning & Coaching Labs
- Design Studio
- Spatial Outlet
- Esri Showcase
- GIS Technical & Extended Support
- 2 Demo theaters
- Drinks & snacks



Tuesday Evening Reception

Smithsonian American Art Museum and National Portrait Gallery

6:30 PM–9:30 PM

- Walking distance from convention center
- Conference Badge needed for reception
- Coat check available in courtyard
- Serving hot hors d'oeuvres and beverages



Wednesday Closing Session

Closing and Hosted Lunch

11:30 AM–1:30 PM

- Ballrooms A–C, Third Level
- Join conference attendees for lunch and closing session
- Closing Speaker Todd Park, U.S. CTO
- Wrap-up and request for feedback with Jack Dangermond.



Upcoming Events

esri.com/events

Date	Event	Location
March 21, 2013	MeetUp – ArcGIS Platform	Washington, DC
April 18, 2013	MeetUp – Location Analytics	Washington, DC
March 23–26, 2013	Esri Partner Conference	Palm Springs, CA
March 25–28, 2013	Esri Developer Summit	Palm Springs, CA
July 6–9, 2013	Esri National Security Summit	San Diego, CA
July 8–12, 2013	Esri International User Conference	San Diego, CA

Federal GIS Conference

February 25–27, 2013 | Washington, D.C.



Thank You

Please complete a session evaluation form.

#FedGIS





Understanding our world.