

Federal GIS Conference 2014

February 10–11, 2014 | Washington DC



On-the-fly Image Analysis

Kevin J. Butler (Esri), Dan Zimble (Esri), & Patrick Collins (Exelis)

Agenda

- **Brief overview**
- **On-the-fly Image Analysis**
- **Demo Esri**
- **ENVI for ArcGIS Services Edition**
- **Demo Exelis VIS**
- **Wrap up**

Esri Terms

Mosaic Dataset	A geodatabase information model for working with collections of imagery.
Raster Function	a capability used for on-the-fly processing
Function Chain	a series of raster functions used together to create a single expression
Raster Function Template	a file used to save functions and parameters used for a given function chain.
Function Template Editor	a GUI used to create, modify, and save out raster function workflows
Model Builder	a GUI used for create, modify, and save out geoprocessing workflows
Image Analysis Window	a GUI used

On-the-fly Image Analysis

Raster Functions

- What are they?
- How do they work?
- How are they different than Geoprocessing Models?
- When to use them?

On-the-fly Image Analysis

- **Traditional**

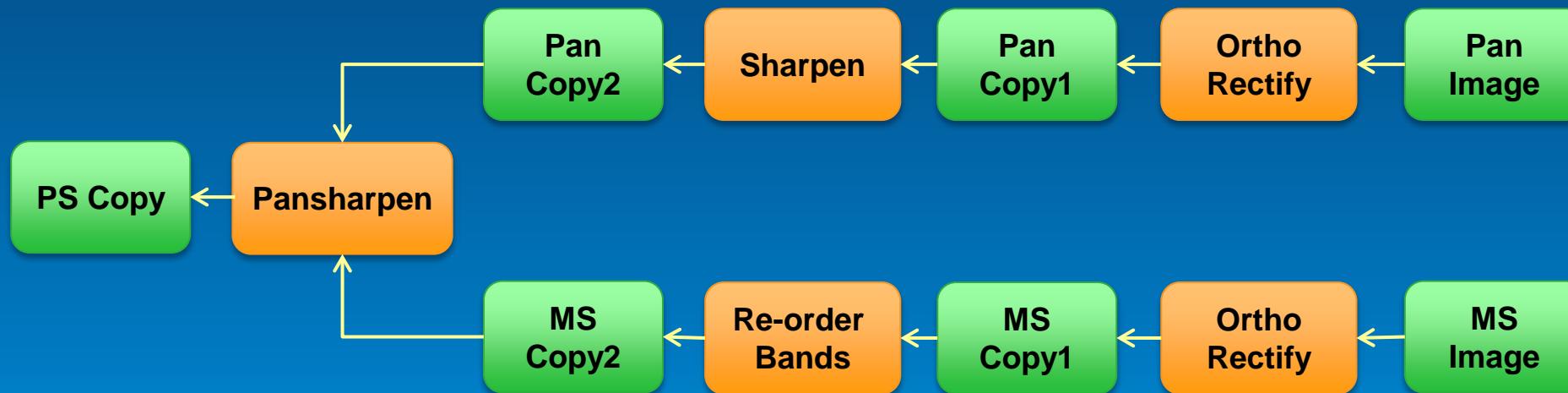
- Create products in advance of when they are needed
- Requires file store and management considerations
- May require significant time to process entire image

- **On-the-fly**

- Processes what you need at the time you need it
- Minimizes file storage and management burdens
- Instantaneously create new image products

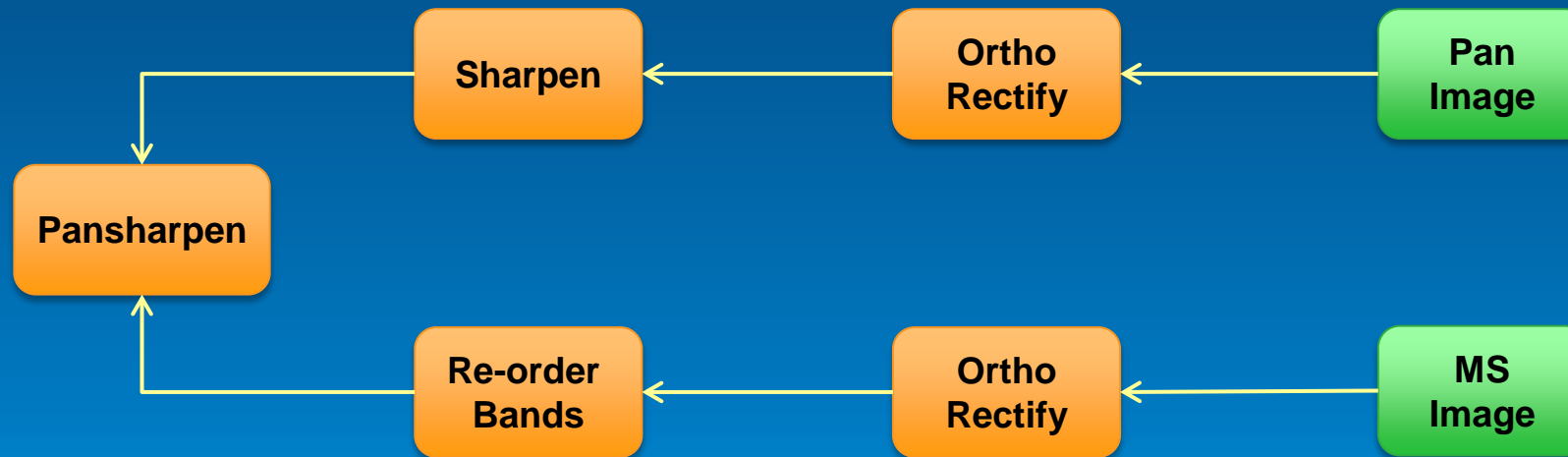
Traditional

- Traditional Image Processing



On-the-fly

- On-the-fly Image Processing

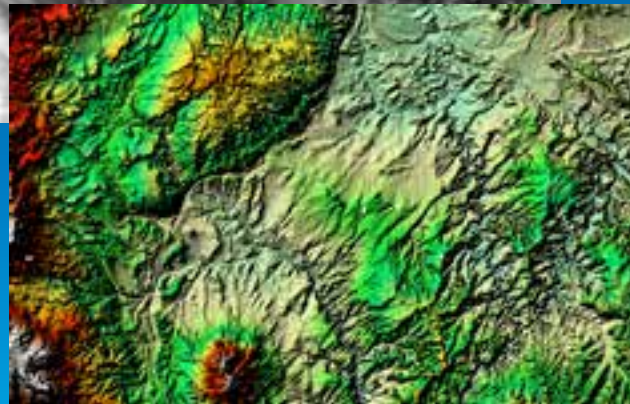
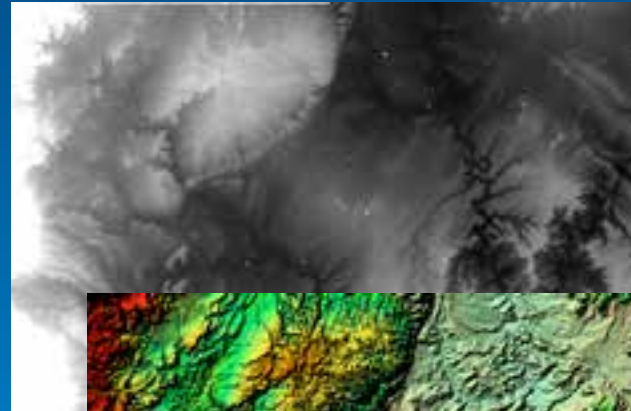


On-the-fly Processing

Perform operations on raster layers

- Applied on the fly

*Elevation
raster layer*

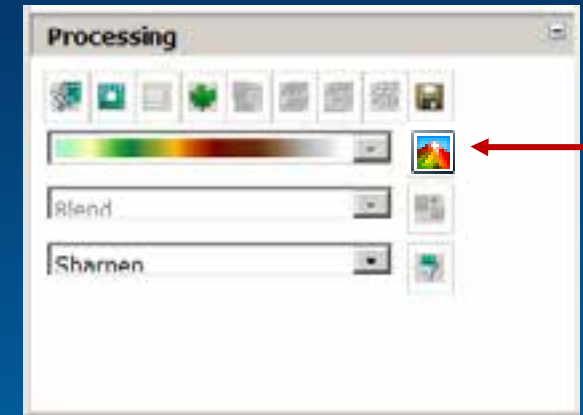


*Shaded relief
raster layer*

Advantages

- No pre-processing
- No duplication of imagery
- Does not alter the original source rasters
- Save as a layer (.lyr) or layer package

Image Analysis Window

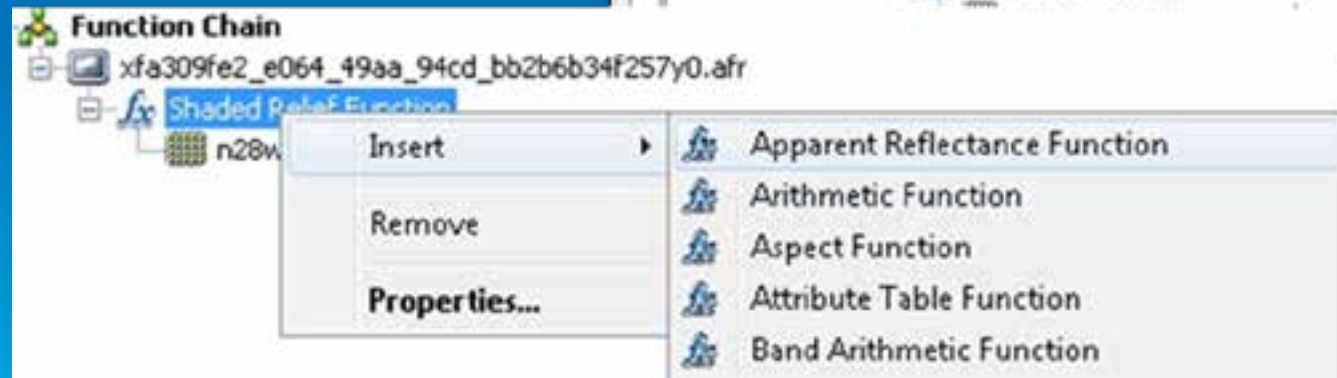
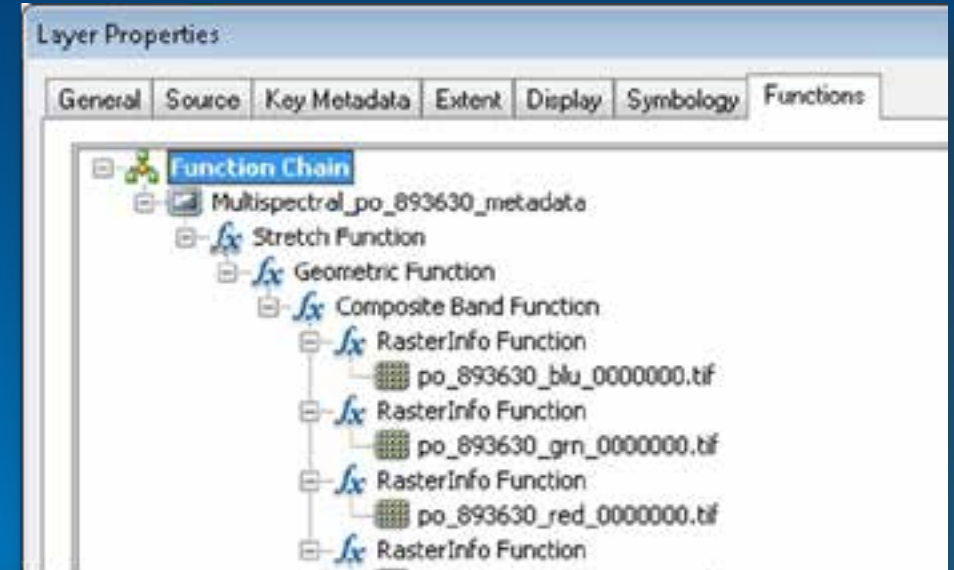


Processing buttons

	Clip		Pan-sharpening
	Mask		Orthorectify
	Composite Bands		Export
	NDVI		Shaded Relief
	Colormap To RGB		Mosaic
	Difference		Filter

Raster Functions

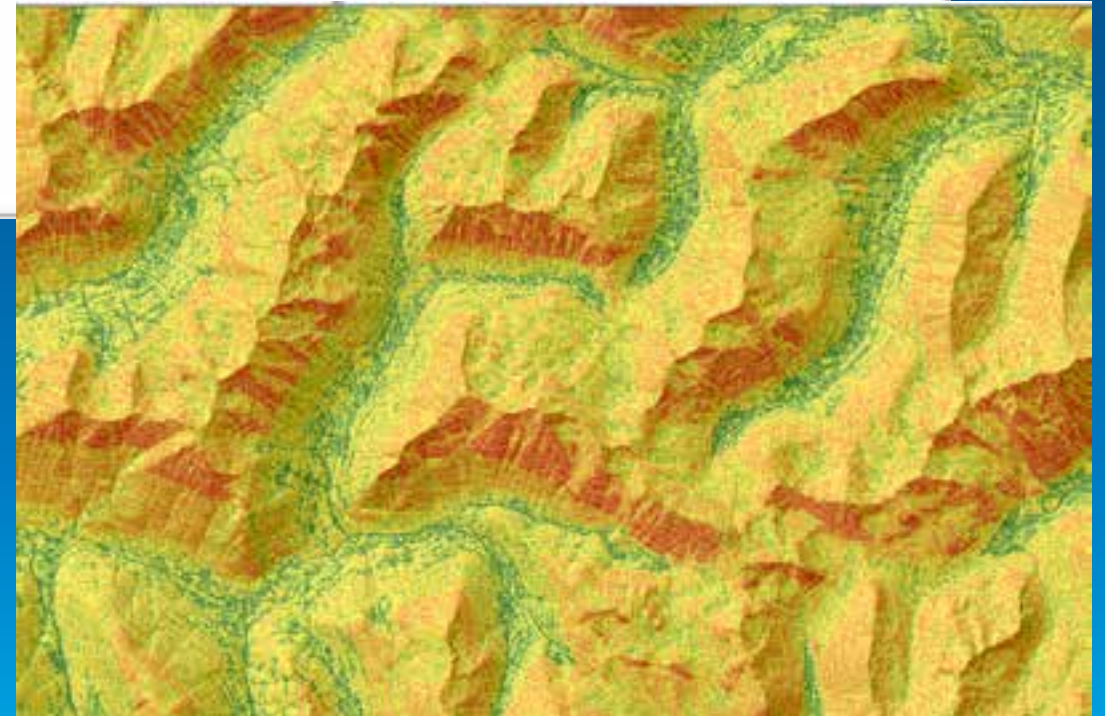
- A processing algorithm
 - Reference input Image(s)
 - Parameters
- Processing chains
- Customized
 - .NET
 - C++



Local Function

New in 10.2

- Per-pixel operations
 - bitwise
 - stats
 - conditional
 - logical
 - math/trig



Example: On-the-fly Avalanche Risk Assessment

Demo

Deriving Earth at Night On-the-fly

Kevin J. Butler - Esri



Esri and Exelis - Collaboration in the Cloud

- **Integrated Desktop and Enterprise Solutions**
- **ENVI image analysis as geoprocessing tools within the ArcGIS platform**
- **Shareable as services via ArcGIS for Server and ArcGIS Online**
- **Customizable to serve the needs of the individual organization**



Exelis Visual Information Solutions – Who are we?

EXELIS

Visual Information Solutions

- Image analysis software company - Boulder, CO
- Esri platinum-level business partner
- Interoperable with ArcGIS at many levels:
 - Data, tools, workflows, and applications
- ENVI image analysis as geoprocessing tools within the ArcGIS platform



ENVI for ArcGIS – Services Edition

- Data Catalog and Server
- ArcGIS On-the-Fly Image Analysis
- Dissemination via Desktop, Mobile, and ArcGIS Online



- Advanced Image Analysis Engine
- Customizable tools for Multispectral, Hyperspectral, and LiDAR
- Shareable as a Geoprocessing Service via ArcGIS for Server

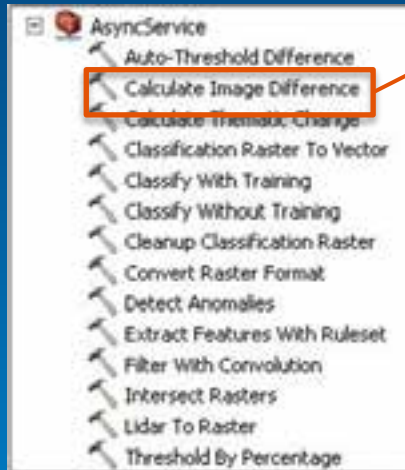


ENVI for ArcGIS – Services Edition

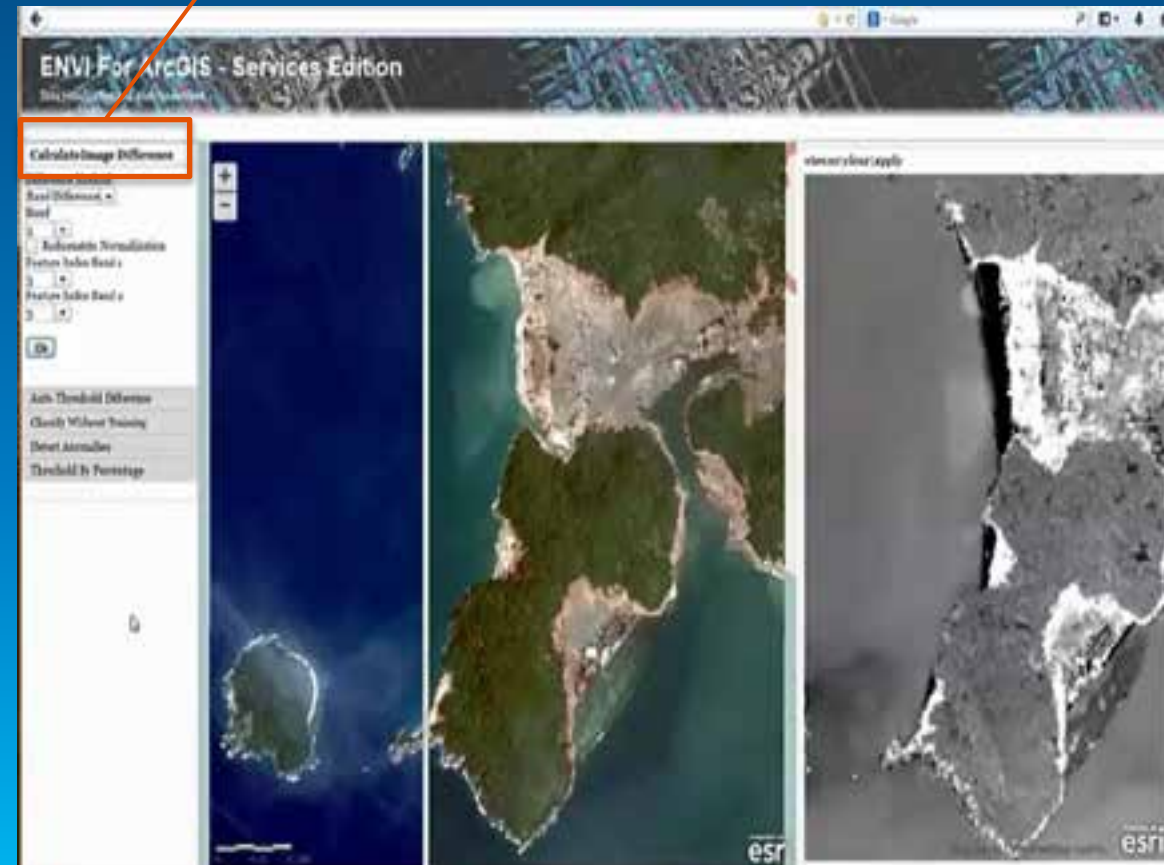
- 14 Analysis Tools Available Out of the Box
- Shareable Across the Entire ArcGIS Platform



An ENVI Geoprocessing Task in ArcGIS Online



ENVI for ArcGIS – Services Edition Tools



A Client Consuming ENVI Geoprocessing via ArcGIS for Server



Landsat Processing Client

Patrick Collins – Exelis VIS



Questions?

Federal GIS Conference 2014

February 10–11, 2014 | Washington DC



**Don't forget to complete
a session evaluation form!**

Federal GIS Conference 2014

February 10–11, 2014 | Washington DC



Networking Reception

Smithsonian National Museum of Natural History

Tuesday, 6:30 PM–9:30 PM

Bus Pickup located on L Street

Federal GIS Conference 2014

February 10–11, 2014 | Washington DC



Print your customized Certificate of Attendance!

Printing stations located in Hall B
and the 140/150 Room Concourse.

Federal GIS Conference 2014

February 10–11, 2014 | Washington DC



GIS Solutions EXPO, Hall B

Monday, 12:30 PM–6:30 PM

Tuesday, 10:45 AM–4:00 PM

- Exhibitors
- Hands-On Learning Lab
- Technical & Extended Support
- Demo Theater
- Esri Showcase

Federal GIS Conference 2014

February 10–11, 2014 | Washington DC



Interested in diving deeper into Esri technology?

Add a day to your Fed GIS experience and register to attend the Esri DevSummit Washington DC. Stop by the registration counter to sign up.



Understanding our world.