

Federal GIS Conference 2014

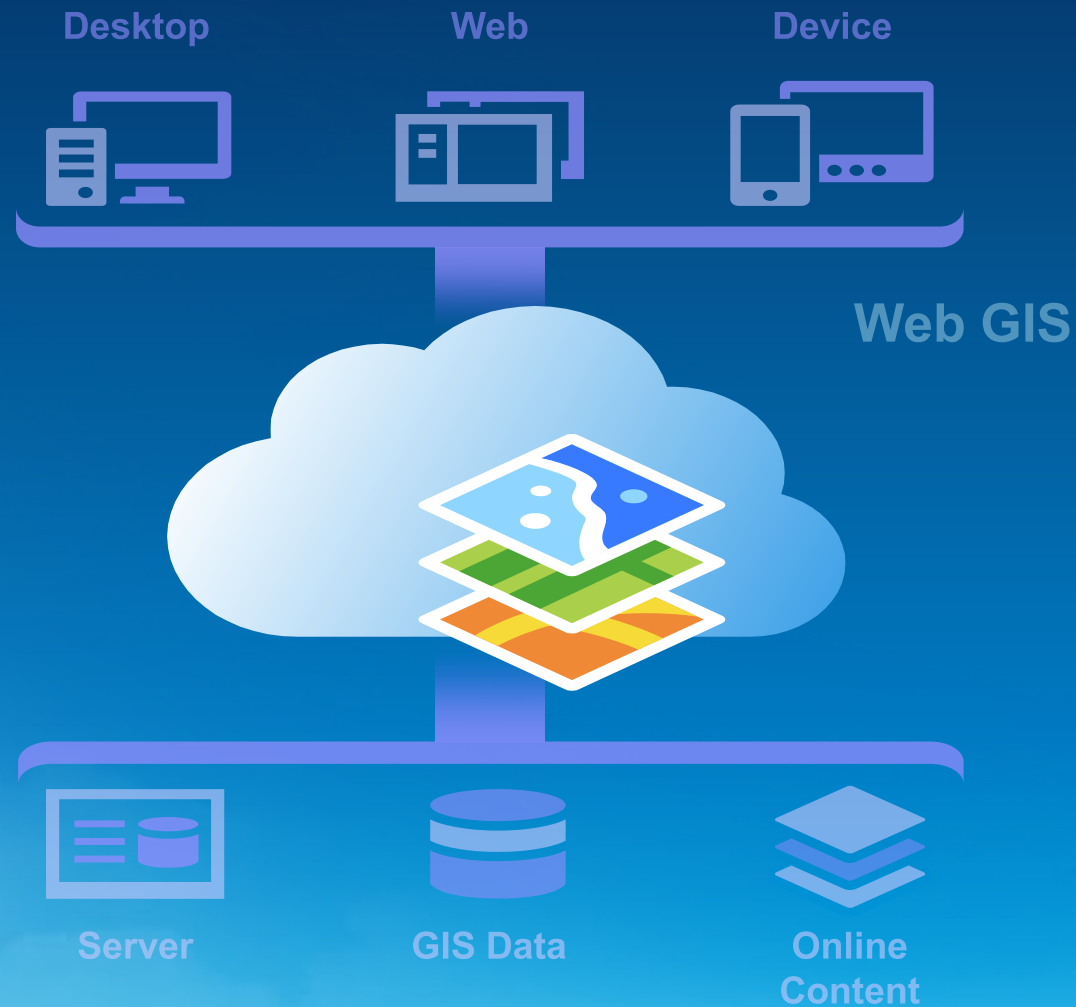
February 10–11, 2014 | Washington DC



# What is new in ArcGIS 10.2 for Server

Nikki Golding

# ArcGIS is now a Web GIS



Available in the Cloud . . .  
. . . and On-Premises

# ArcGIS – Powered by Services

Simple  
Integrated  
Open



Web GIS

Server

Online Content  
and Services



# 10.1

Map cache status

Windows and Linux friendly

**Simplified architecture**

**64 bit**

Performance Improvements

**Administration REST API**

New publishing workflows

High Quality Print Service

10.1 was a big change to ArcGIS Server

# 10.2

## Quality Release:

- Better administration
- Enhanced security
- Issues fixed

## New Capabilities

- More support for databases
- Real time GIS (GeoEvent Processor)

## Enables Web GIS

- Builds a human-friendly interface on top of your server
- Self-Service Mapping
- Supports new applications

10.2 is an incremental update to 10.1

# ArcGIS Server

Enhances Capabilities and Enables Web GIS

- Quality
- Security
- Administration
- Database Support
- Real Time Support



## Portal for ArcGIS Enables

- Content Management
- Web Maps
- Apps

... Implements Web GIS on Premises

# Better Administration

## 1) ArcGIS Server Manager improvements

- 1) Disable copying of data when publishing new services
- 2) Discover data sources used by your services
- 3) Sharing services with an ArcGIS organization

## 2) Command-line utilities

Backup and Restore your ArcGIS server site

Demo

# Administration

Ca.

Command Prompt

```
C:\Python27\ArcGISx6410.2>python.exe "C:\Program Files\A
\backup.py" -u admin -p admin -s http://myserver:6080 -f
Unable to connect to the ArcGIS Server site on myserver.
ver is running.
```

```
C:\Python27\ArcGISx6410.2>python.exe "C:\Program Files\A
\backup.py" -u admin -p admin -s http://localhost:6080 -f
Backing up the site running at "localhost"
Site has been successfully backed up and is available at
kups\Feb-09-2014_12-51-37.agssite
```

```
C:\Python27\ArcGISx6410.2>
```



# Better database support

- 1) Direct database read-write capabilities
- 2) Netezza and Teradata (read only)
- 3) OleDB support

Demo

# Database Support



# Security

## ArcGIS Server

- Re-creating the geometry service
- Registering JPIP Server with ArcGIS for Server
- Searching for services in Manager
- Using a proxy server to connect to the Internet
- Viewing machine information in Manager
- Viewing software authorization metadata in Manager
- Viewing Web Adaptor properties in Manager
- About the ArcGIS Server Administrator Directory
- Securing your ArcGIS Server site
  - Securing your ArcGIS Server site
  - How ArcGIS Server security works
  - The ArcGIS Server account
- Configuring a secure environment for ArcGIS Server
  - Configuring a secure environment for ArcGIS Server
  - Best practices for configuring a secure environment
  - Firewalls and ArcGIS Server
  - Ports used by ArcGIS Server
  - Making your data accessible to ArcGIS Server
  - Using standardized queries
- Configuring ArcGIS Server to be secure
- Scripting ArcGIS Server administration
  - Scripting ArcGIS Server administration
  - Scripting with the ArcGIS REST API
  - Scripting service publishing with ArcPy
  - ArcGIS Server command line utilities
    - ArcGIS Server command line utilities
    - Backup utility

# Better integration for Windows Active Directory

- 1) **Complete support for Windows Integrated Authentication**  
(SSO for using and administering ArcGIS Server services)
- 2) **Supports Public and Private services with Web Tier authentication**  
(Before only supported with token based authentication)
- 3) **Support for Windows Active Directory Nested Groups**
- 4) **Support for Active Directory Forests**

# Support for PKI

- **Public Key Infrastructure**
- **Single Sign On**
- **Requires Web Adaptor**



# Security hardening and best practices documentation

## 1) Continued Security Audits

## 2) More protection against SQL Injection vulnerabilities

Standardized Queries setting

## 3) Enhanced security topics in the [help](#)

Always use online help for the latest

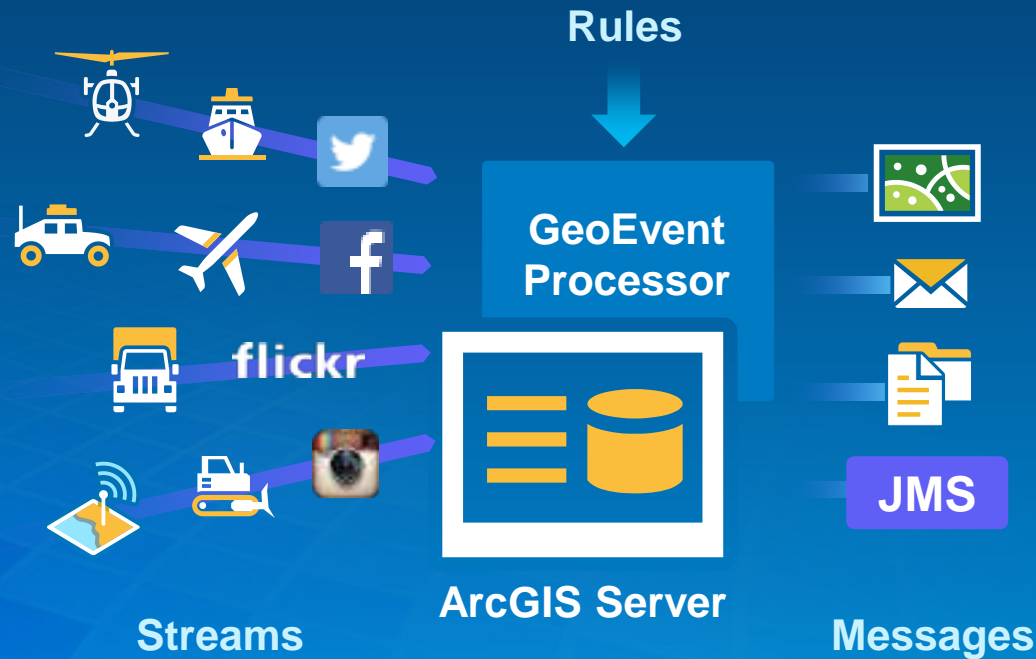


# GeoEvent Processor

Integrates and Exploits Real Time Data

## Enabling

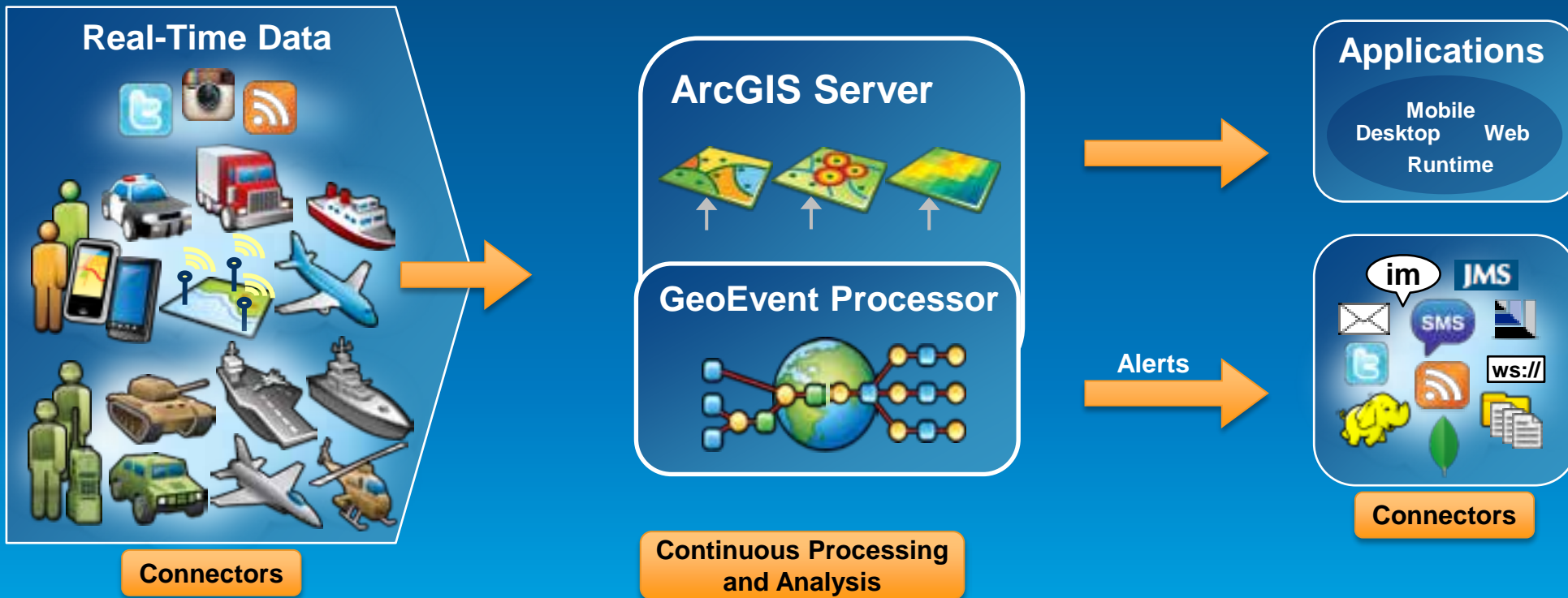
- Big Data
- Inline Processing
- Geo-Fencing



*Continuous Processing and Analysis*

# ArcGIS GeoEvent Processor for Server

- Receives real-time streaming data
- Performs continuous processing and analysis
- Sends updates and alerts to those who need it where they need it



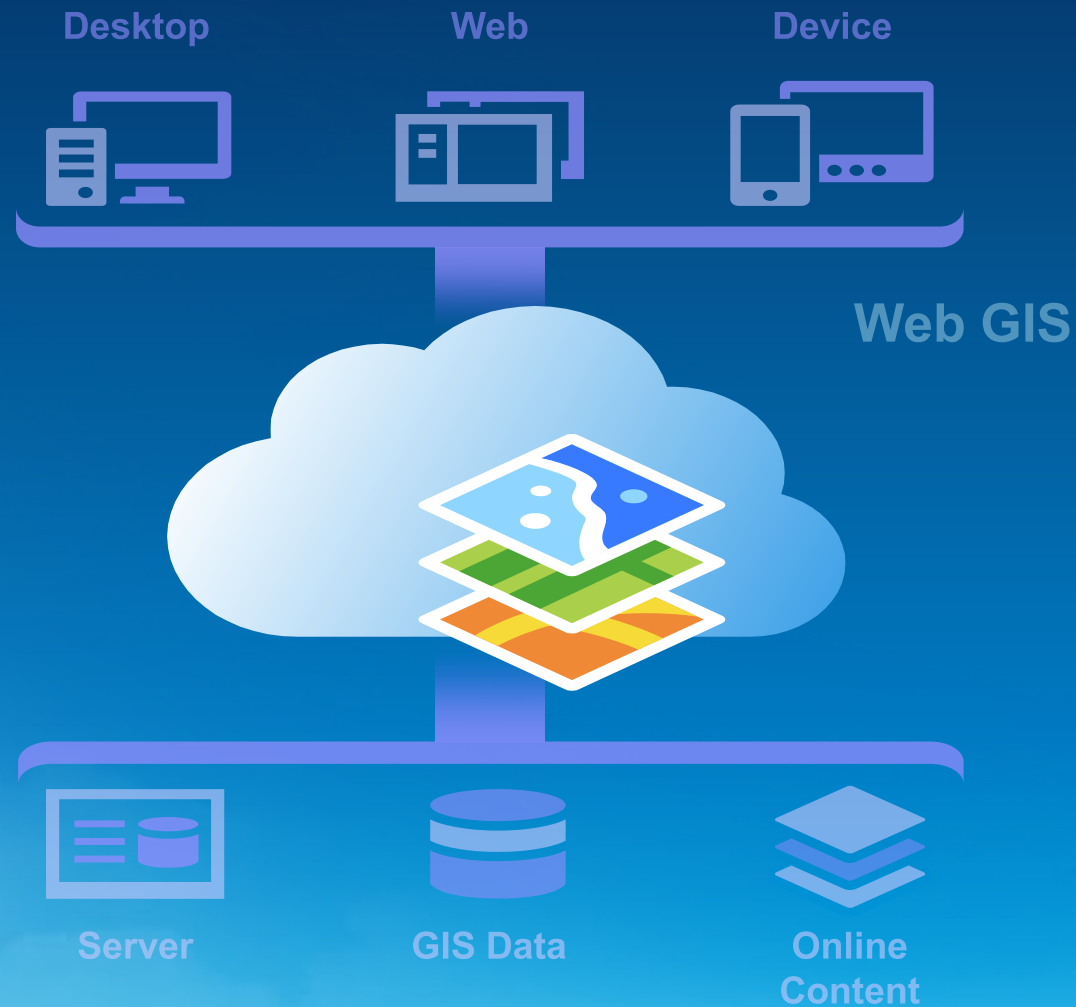


Demo

# GeoEvent Processor



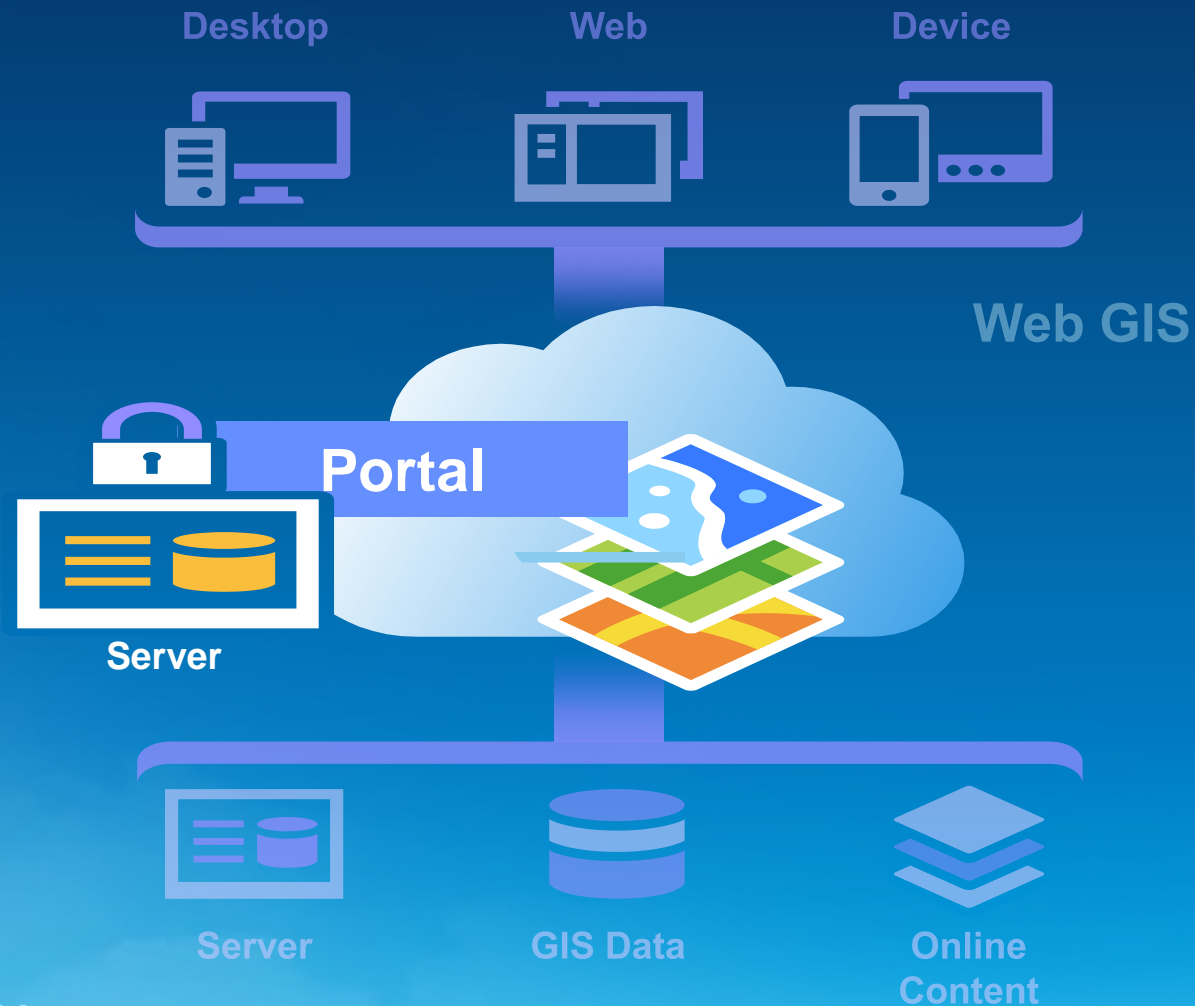
# ArcGIS is now a Web GIS



Available in the Cloud . . .  
. . . and On-Premises

# Portal for ArcGIS

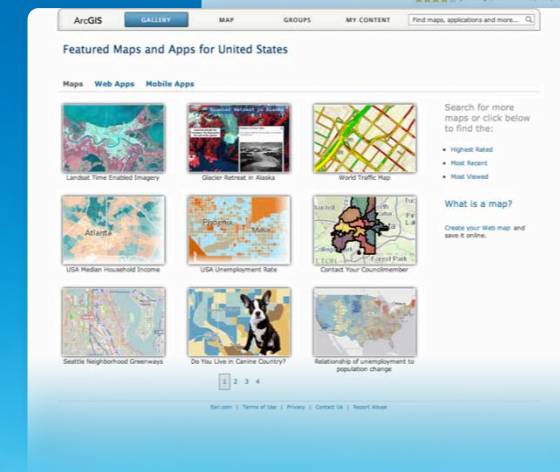
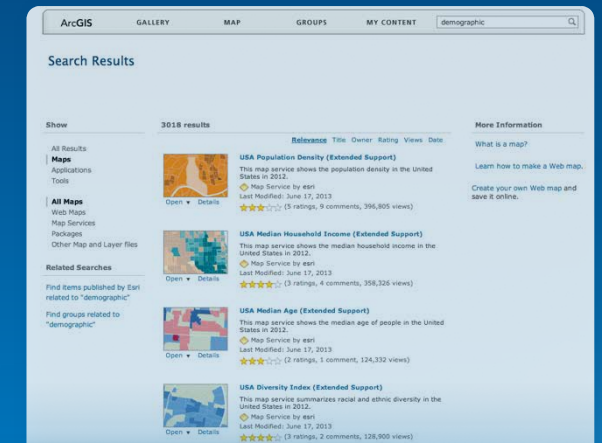
New Extension to ArcGIS 10.2 for Server Advanced



Available in the Cloud . . .  
. . . and On-Premises

# ArcGIS – Organizes Content and Manages Access

Simple  
Integrated  
Open



# Portal for ArcGIS

Is it right for me?

- **Typical reasons for choosing Portal for ArcGIS**
  - Have no internet/www connection
  - Have strict SLAs and governance
  - Are not ready for the cloud yet
  
- **Typical reason for choosing ArcGIS Online**
  - Lower overall cost (faster start, less admin costs)
  - Continuous updates and improvements
  - Elasticity

Demo

# WebGIS





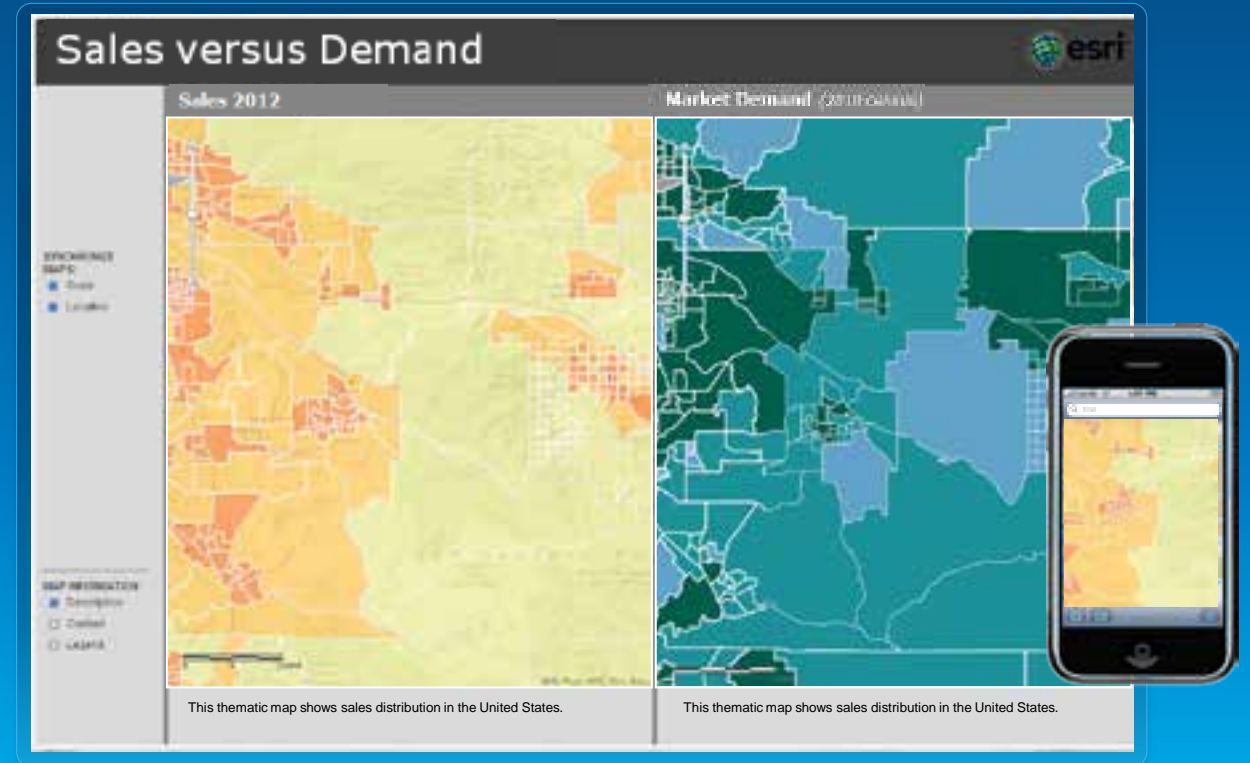
# Summary



# Implementation Tips

## Beyond installation

- Stay focused on the information products
- Embrace the idea of maps everywhere
- Model Portal after your structure & workflows
- Connect to Enterprise Systems
- Utilize apps provided with platform





# 10.2

## Quality Release:

- Better administration
- Enhanced security
- Issues fixed

## New Capabilities

- More support for databases
- Real time GIS (GeoEvent Processor)

## Enables Web GIS

- Builds a human-friendly interface on top of your server
- Self-Service Mapping
- Supports new applications

10.2 is an incremental update to 10.1

**Federal GIS Conference 2014**

February 10–11, 2014 | Washington DC



**Don't forget to complete  
a session evaluation form!**

**Federal GIS Conference 2014**

February 10–11, 2014 | Washington DC



# Networking Reception

## Smithsonian National Museum of Natural History

Tuesday, 6:30 PM–9:30 PM

Bus Pickup located on L Street

Federal GIS Conference 2014

February 10–11, 2014 | Washington DC



# Print your customized Certificate of Attendance!

Printing stations located in Hall B  
and the 140/150 Room Concourse.

Federal GIS Conference 2014

February 10–11, 2014 | Washington DC



## GIS Solutions EXPO, Hall B

Monday, 12:30 PM–6:30 PM

Tuesday, 10:45 AM–4:00 PM

- Exhibitors
- Hands-On Learning Lab
- Technical & Extended Support
- Demo Theater
- Esri Showcase

Federal GIS Conference 2014

February 10–11, 2014 | Washington DC



## Interested in diving deeper into Esri technology?

Add a day to your Fed GIS experience and register to attend the Esri DevSummit Washington DC. Stop by the registration counter to sign up.



Understanding our world.