

Federal GIS Conference 2014

February 10–11, 2014 | Washington DC



# Our Portal Will Change Our People

Don Barker

GIS Planner, U.S. DoD

## MapBrief Geo Predictions for 2014

by Brian Timoney

Soothsaying is so much part of the human condition that, like so many pointless pleasures, ancient scripture took a very dim view of it.



## GeoHipster

Mapping the world, one organic vertex at a time.



About Poll tally

### What will be HOT in geo in 2014 — predictions from the Geo...

SPONSOR

## Top Geospatial Predictions for 2014

December 19th, 2013 by Susan Smith

The following are GIS Cafe Voice's Geospatial year's list, but continue on as important 2014, in the delivery of products recovery, tracking and restoration location mapping. See if our predicti

## GeoPredictions for 2014

An eclectic crowd of GeoLuminaries offer their predictions about what will be HOT 2014.

Open source? Hybrid systems? Drones? Hi-res custom imagery? A crowd-funded map? Indoor maps? Geotriggers? GeoSEO?

VerticalGeo

o It... Then Map It.

ABOUT

PROJECTS

CONTACT

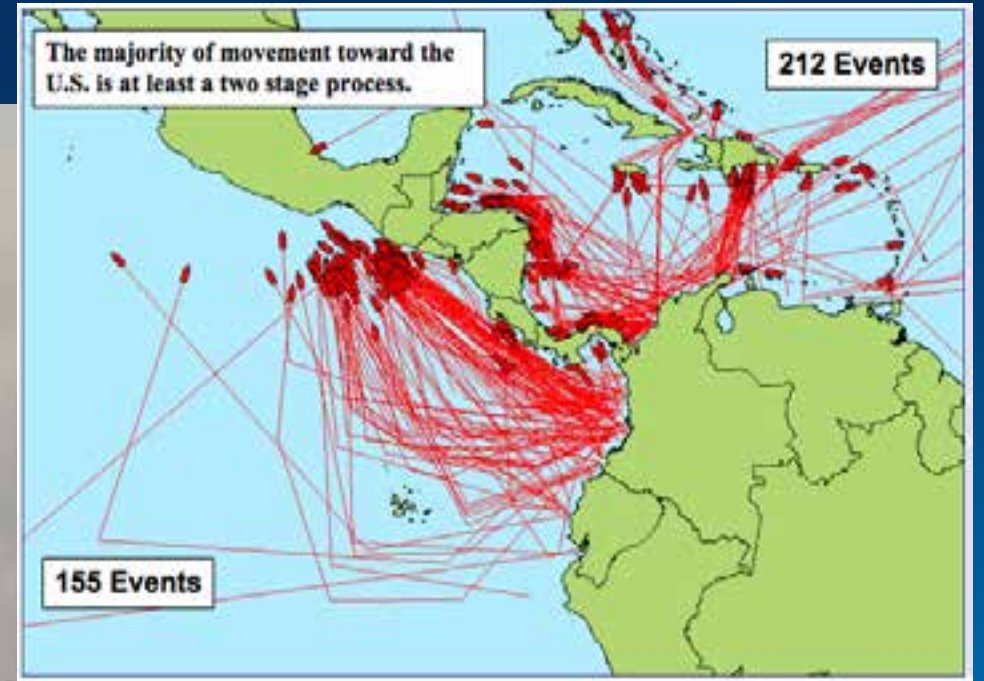
DECEMBER 26, 2013

BY RICK MARSHALL

## GIS Cafe's Top Geospatial Predictions for 2014

# **2014: Our Portal Will Change Our People**

**+ 8 ways to accelerate and manage the change.**



Map courtesy of cipol.org

<b>Job Category</b>	<b>Old Me</b>
Linguist	Create point data. Create line and polygon narrative. Hand off to GIS Analyst for mapping.
GIS Analyst	Geocode. Overlay. Buffer-Clip-Select. Style the map. Interpret the map. Change the intell narrative. Export to JPEG, hand off to Reporter.
Reporter	Edit the narrative. Add the JPEG. Publish intell report. Interact with customer.

<b>Job Category</b>	<b>Old Me</b>	<b>New Me</b>
Linguist	Create point data. Create line and polygon narrative. Hand off to GIS Analyst for mapping	Geocode. Interpret the map. Change the intell narrative.
GIS Analyst	Geocode. Overlay. Buffer-Clip-Select. Style the map. Interpret the map. Change the intell narrative. Export to JPEG, hand off to Reporter.	Perform advanced geospatial analysis. Enable others.
Reporter	Edit the narrative. Add the JPEG. Publish intell report. Interact with customer.	Overlay. Buffer-Clip-Select. Style the map. Interpret the map. Change the intell narrative. Publish and interact with customers.

The diagram illustrates the evolution of job roles. An orange arrow points from the 'Old Me' tasks of the Linguist to the 'New Me' tasks of the GIS Analyst. Another orange arrow points from the 'Old Me' tasks of the GIS Analyst to the 'New Me' tasks of the Reporter. A red circle highlights the 'New Me' tasks of the GIS Analyst, specifically 'Perform advanced geospatial analysis' and 'Enable others'.

## Changing roles, culture, self-image

~~Linguist~~

**Location Intelligence Analyst**

~~Reporter~~

**Cartographer - Reporter**

~~Geospatial Analyst~~

**GIS Professional**

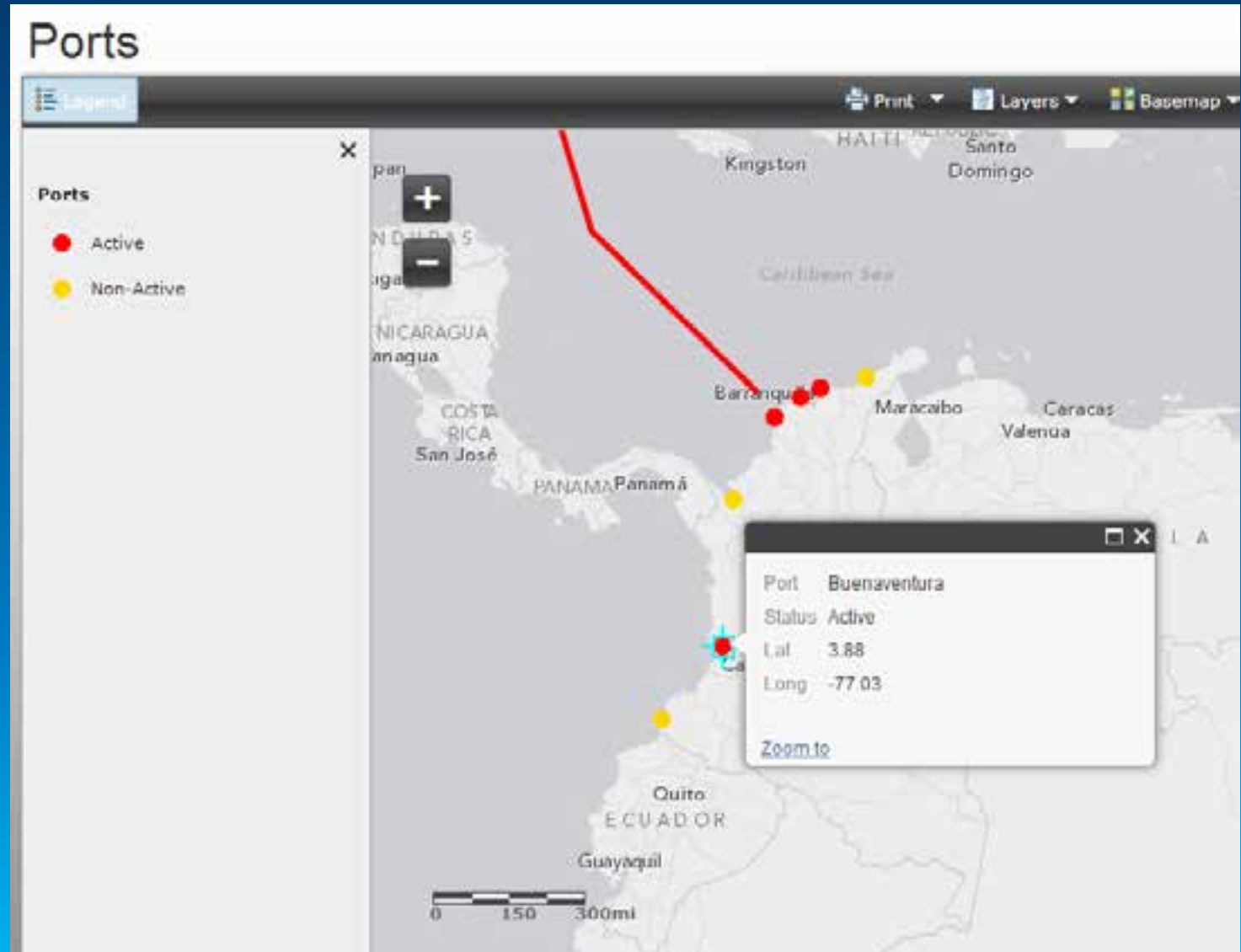
~~Web Map Developer~~

**[ Gone to other contracts ]**

# 1. Require the map.

... utilizing the port facilities at:

Port	Lat	Long
Riohacha	11.54	-72.90
Santa Marta	11.24	-74.20
Barranquilla	10.99	-74.78
Cartagena	10.40	-75.53
Turbo	8.09	-76.70
Buenaventura	3.88	-77.03
Tumaco	1.77	-78.77





## 2. Re-write the regs.

ArcGIS Services Directory

Home > pasda > CRH\_2011\_v03 (MapServer)

### pasda/CRH\_2011\_v03 (MapServer)

View In: [ArcMap](#) [ArcGIS Explorer](#) [ArcGIS JavaScript](#) [Google Earth](#)

View Footprint In: [Google Earth](#)

Service Description:

Map Name: Choptank River Heritage

[Legend](#)

[All Layers and Tables](#)

Layers:

- [CRH Sites - Zoom In](#) (0)

Document Info:

- Title: Choptank River Heritage
- Author: Don Barker, info@choptankriverheritage.org
- Comments: Choptank River Heritage presents over 300 historic sites that have been identified within the watershed of the Choptank and Tuckahoe Rivers and their Tributaries on Maryland's Eastern Shore. The data was collected by the Choptank River Heritage Center (OHTMC) in West Denton, Maryland, and published in "Maryland's Upper Choptank River and Tuckahoe River Cultural Resource Inventory" (2002). These studies were funded by the Maryland Historical Trust. Choptank River Heritage also provides information on historic sites, buildings, and maritime vessels in the Choptank River watershed. Site data was provided to the Choptank River Heritage Archeologist/GIS Coordinator, Maryland Historical Trust, Maryland Department of Planning, 100 Community Place, Crownsville, MD 21032 Maryland at <http://mht.maryland.gov/NR/>. Updates April 2011: 1. All data points re-sourced to an Esri file geodatabase. 2. Map services (Desktop and ArcGIS Server). 3. Choptank River watershed data provided by USDA Dover DE was re-digitized to improve accuracy.
- Subject: Choptank River Heritage presents over 300 historic sites that have been identified within the watershed of the Choptank and Tuckahoe Rivers and their Tributaries on Maryland's Eastern Shore.
- Category:
- Keywords: Choptank River, Tuckahoe River, Tred Avon River, Caroline County, Talbot County, Dorchester County, Kent County, Delaware, C
- Credits: Choptank River Heritage, Maryland Historical Trust

Historic sites on the Choptank and Tuckahoe Rivers and their Tributaries on Maryland's Eastern Shore

Web Map by geo-elektrika  
Last Modified: October 29, 2013  
(0 ratings, 9,271 views)

Facebook Twitter

OPEN SHARE EDIT DELETE MOVE

Description

Classification:  
Summary:  
POC:  
POC Organization:














Access and Use Constraints

### 3. Move “Reporters” into the cartography space.

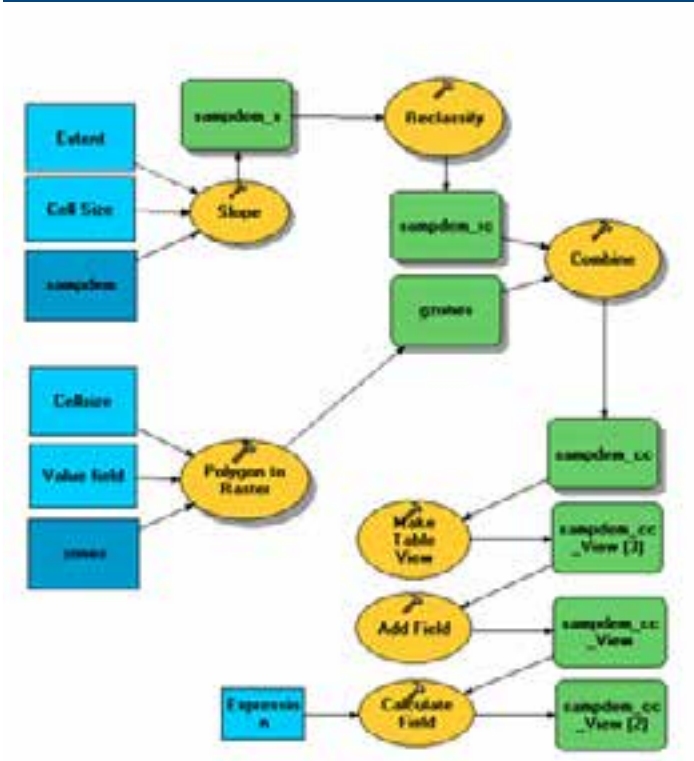
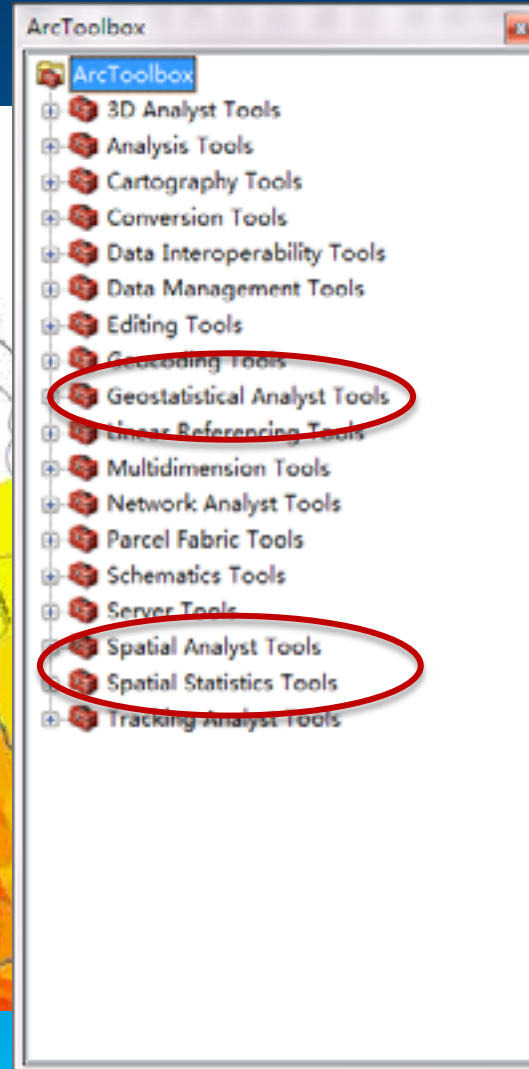
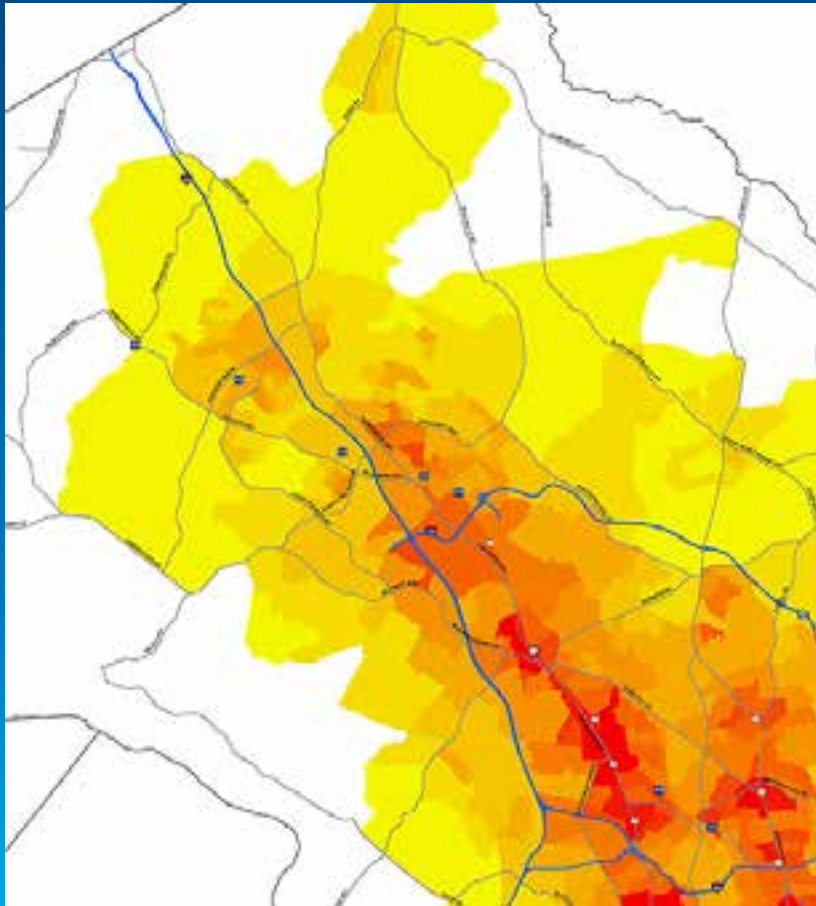
## Share

### Make a Web Application

Click a template's thumbnail to preview it or click its links to download it to your computer or publish it to the web.

<b>Basic Viewer</b>  <a href="#">Publish</a> ▼	<b>Chrome - Twitter</b>  <a href="#">Publish</a> ▼	<b>Edit</b>  <a href="#">Publish</a> ▼	<b>Elevation Profile</b>  <a href="#">Publish</a> ▼	<b>Parcel Viewer</b>  <a href="#">Publish</a> ▼	<b>Simple Map Viewer</b>  <a href="#">Publish</a> ▼	<b>Storytelling Basic</b>  <a href="#">Publish</a> ▼
<b>Filter</b>  <a href="#">Publish</a> ▼	<b>Legend</b>  <a href="#">Publish</a> ▼	<b>Map Tour</b>  <a href="#">Publish</a> ▼	<b>Panels</b>  <a href="#">Publish</a> ▼	<b>Storytelling Compare</b>  <a href="#">Publish</a> ▼	<b>Storytelling Swipe</b>  <a href="#">Publish</a> ▼	<b>Time Aware</b>  <a href="#">Publish</a> ▼

## 4. Move GIS Analysts beyond points-over-imagery.

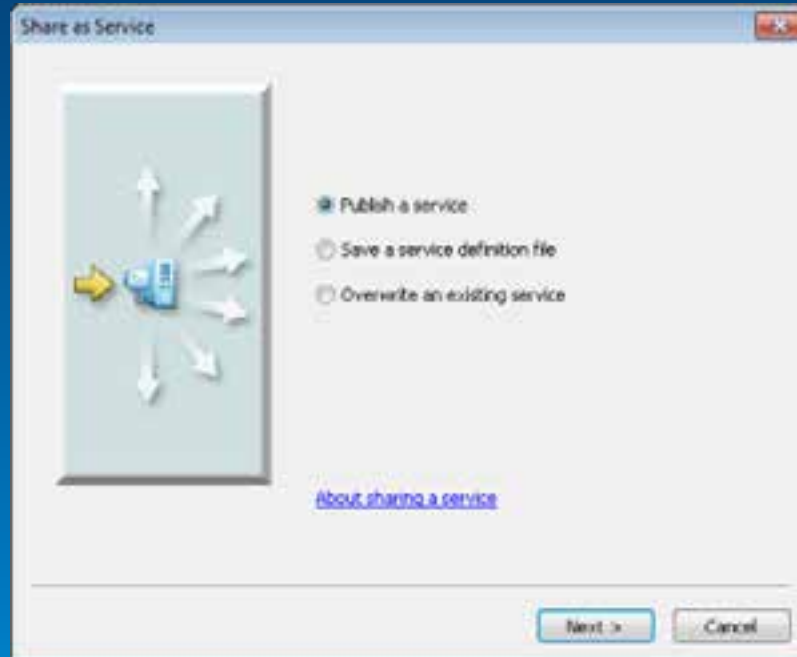
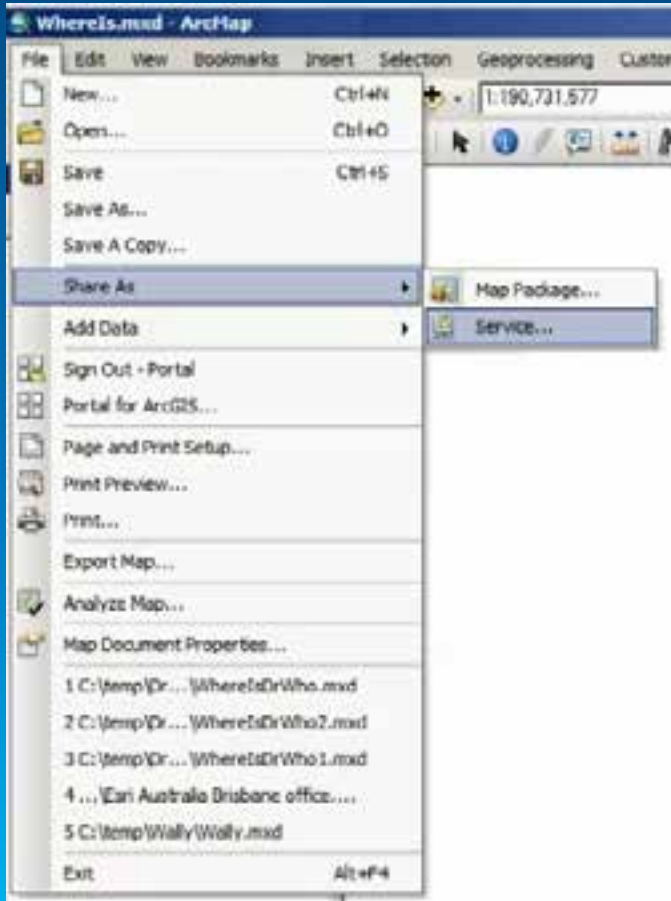


## 5. Grow GIS Professionals



Map courtesy of [gisci.org](http://gisci.org)

## 6. Give GIS Professionals the entire GIS platform. [ Unleash ArcGIS Server! ]



ArcGIS Services Directory

[Home](#) > [Society](#)

---

**Folder: Society**

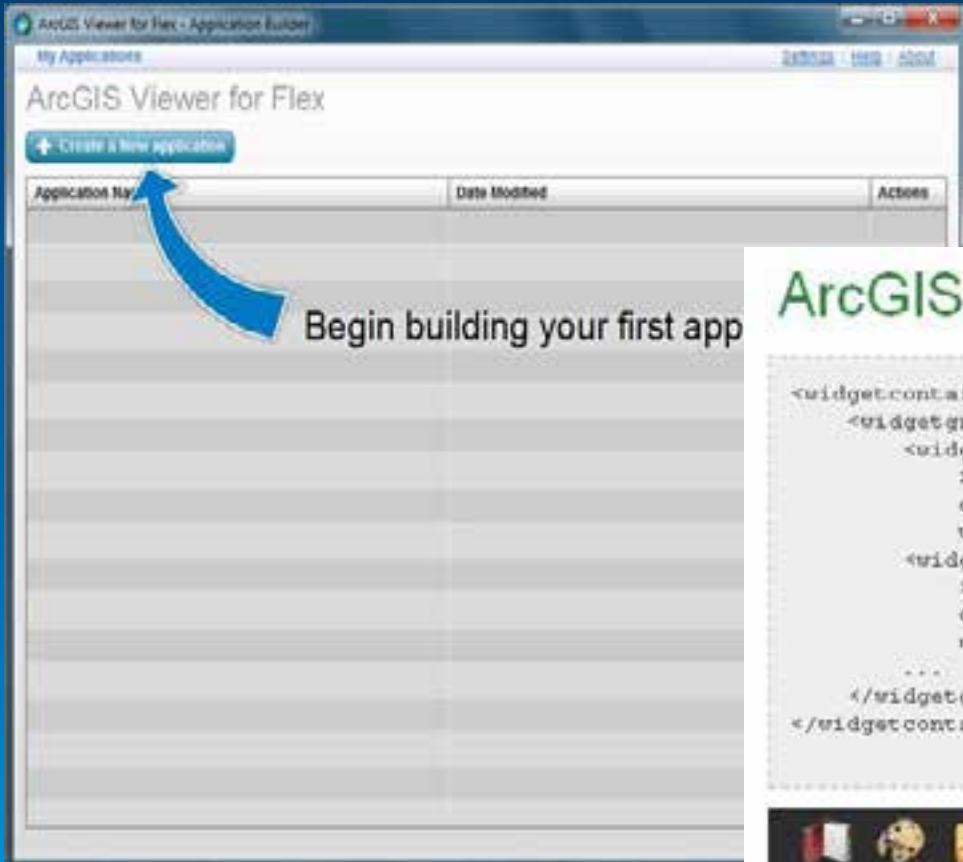
Current Version: 10.05

View Footprints In: [Google Earth](#)

**Services:**

- [Society/CSSC.Demographic](#) (MapServer)
- [Society/CSSC.Education](#) (MapServer)
- [Society/CSSC.PublicSafety](#) (MapServer)
- [Society/CSSC.PublicServices](#) (MapServer)
- [Society/CSSC.Recreation](#) (MapServer)
- [Society/MD.State.ACS](#) (MapServer)
- [Society/MD.State.Census](#) (MapServer)
- [Society/MD.State.CensusBlockUrbanAreas](#) (MapServer)
- [Society/MD.State.CensusBoundaries.2010](#) (MapServer)
- [Society/MD.State.CensusUrbanAreas](#) (MapServer)
- [Society/MD.State.HomeownerRateByCT](#) (MapServer)
- [Society/MD.State.MDInventoryOfHistoricProperties](#) (MapServer)
- [Society/MD.State.MedianAgeByCT](#) (MapServer)
- [Society/MD.State.MedianAgeByZCTA](#) (MapServer)
- [Society/MD.State.MedianHouseholdIncome](#) (MapServer)
- [Society/MD.State.MedianHouseholdIncomeWithCV](#) (MapServer)
- [Society/MD.State.MultiFamilySites](#) (MapServer)

# 7. Move GIS professionals into the developer space.



Begin building your first app

## ArcGIS Viewer for Flex

```
<widgetcontainer layout="float">
  <widgetgroup label="Locators">
    <widget label="Find U.S. address"
      icon="assets/images/i_target.png"
      config="widgets/Locate/LocateWidget_US.xml"
      url="widgets/Locate/LocateWidget.swf"/>
    <widget label="Find European addresses"
      icon="assets/images/i_pin2.png"
      config="widgets/Locate/LocateWidget_EU.xml"
      url="widgets/Locate/LocateWidget.swf"/>
    ...
  </widgetgroup>
</widgetcontainer>
```



## Welcome to the Esri Storytelling Map Tour template

Info for existing users.....	2
Introduction for new users .....	3
1. Download and install the template.....	6
2. Assemble the images and videos .....	7
3. Assemble the map tour points layer.....	9
4. Create your web map.....	16
5. Configure the template.....	18
Tips.....	23

### Add your own logo and links to the title bar of your map tour

```
// Header Logo
HEADER_LOGO_URL: "resources/icons/esri-logo.png",
HEADER_LOGO_TARGET: "http://www.esri.com",
// Header top right link
HEADER_LINK_TEXT: "A story map",
HEADER_LINK_URL: "http://storymaps.esri.com/home/",
// Header, Picture Panel and Carousel colors
COLORS: ["#4444", "#757575", "#c0c0c0"],
```

# 8. Inspire GIS professionals to enable others.

The screenshot shows a web interface for a GIS group. At the top, there is a blue header with the title 'Authoritative Map Layers for Mission Operations' and a small map icon. Below the header is a navigation bar with buttons for 'EDIT', 'INVITE USERS', 'MEMBERSHIP REQUESTS', 'DELETE GROUP', and 'SHARE'. A descriptive paragraph follows: 'Mission Operations group analysts and reports utilize these map layers published by the Geo-Analytics Team for all analytic collaboration and reporting to customers.' Below this is a table of map layers with columns for 'Title', 'Owner', 'Rating', 'Views', and 'Date'. Three map layers are listed: 'Coordination Units', 'Major Routes', and 'Port Facilities'. Each entry includes a small map thumbnail, the title, the owner 'geo-elektrika', the last modified date 'January 24, 2014', and a rating/feedback summary. Each entry also has 'Open' and 'Details' links and a red 'X' icon in the right margin.

Title	Owner	Rating	Views	Date
Coordination Units	Web Map by geo-elektrika	(0 ratings, 0 comments, 2 views)		
Major Routes	Web Map by geo-elektrika	(0 ratings, 0 comments, 0 views)		
Port Facilities	Web Map by geo-elektrika	(0 ratings, 0 comments, 1 view)		

**In 2014, we get higher returns on our investment in GIS  
by changing our culture  
and changing our people.**

- 1. Require the map.**
- 2. Re-write the reporting regulations and policy.**
- 3. Move reporters into the cartography space.**
- 4. Move GIS Analysts beyond points-over-imagery.**
- 5. Grow GIS professionals:**
  - 6. ... Give them the entire GIS platform.**
  - 7. ... Move them into the developer space.**
  - 8. ... Inspire them to enable others.**





Understanding our world.