

Federal GIS Conference 2014

February 10–11, 2014 | Washington DC



ArcGIS for State and Local Government

Nikki Golding

ArcGIS

A Platform for Geographic Information

- [ArcGIS Solutions](#)
- Local Government
- State Government
- Utilities
- Defense
- Transportation
- Telecommunications
- Public Safety

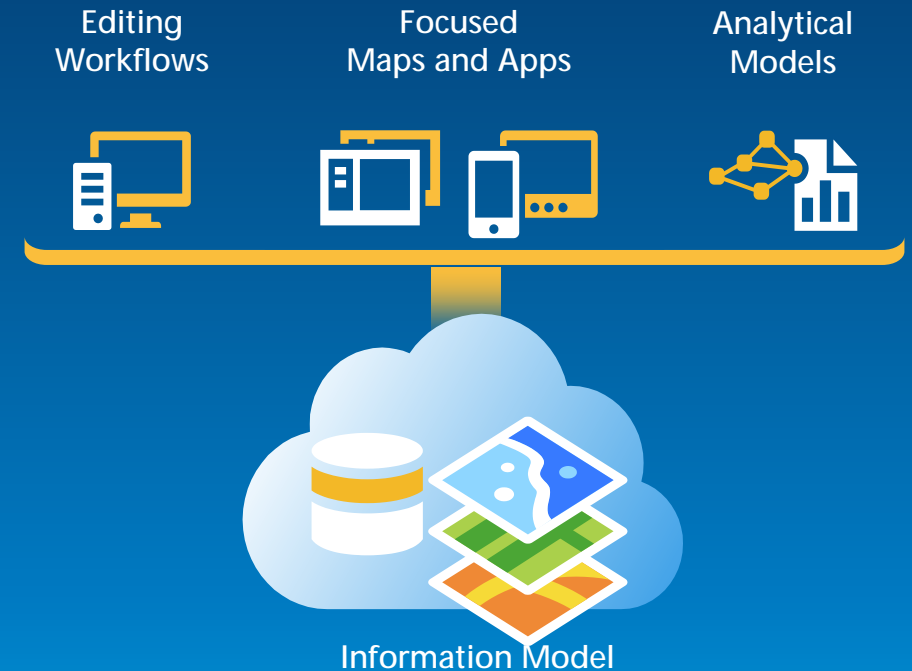


*Available in the Cloud . . .
. . . and On-Premises*

ArcGIS for State and Local Government

A solution for Esri's government customers

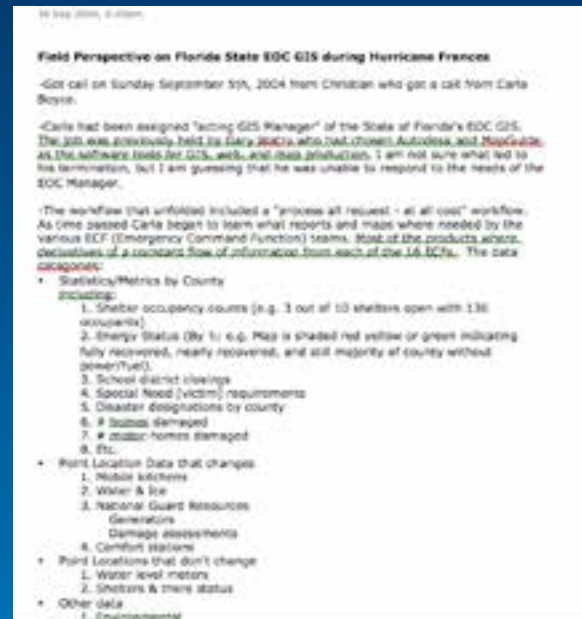
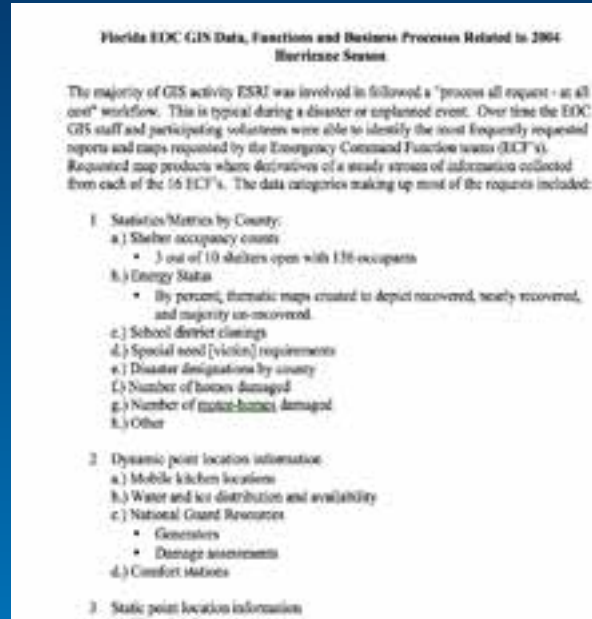
- Series of useful maps and apps focused on government work
 - Organized into modules
 - Extensible, configurable
 - Freely available and fully supported
 - A foundation for Partner solutions
- Community of users
 - Best Practices / Implementation Support
- Network of Esri Services and Partner offerings
 - Help users implement, sustain and enhance



.....Available on-premise or in the cloud



A common experience....



In each event Emergency Management Agencies

- Leverage critical operational data (streets, parcels, staging areas, critical infrastructure)
- Produce hard copy map products – standard and ad hoc (same during every event)
- Maintain a Common Operational Picture or Viewer to assess real time events and activities
- Quickly Deploy Mobile Damage Assessment tools
- Share information with Citizens (discoverable, easy to understand and use, relevant)

Common Challenges

- Budget
- Doing More with Less
- Technical Breadth
- Support for Existing Systems
- Domain Expertise



Common Goals

healthy
communities

quality
education

robust public
services

diverse cultural
opportunities

safe
communities

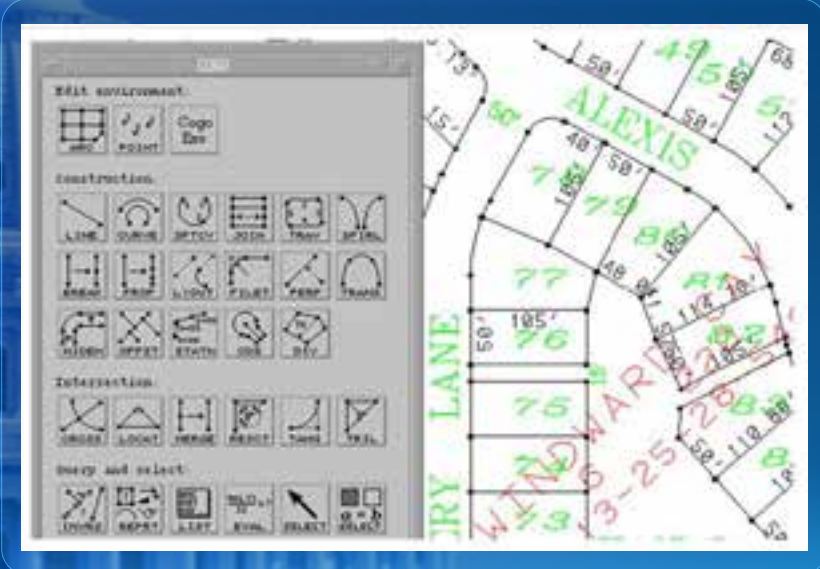
sustainable
environment

smart
growth

thriving
economy



Supporting Custom Applications



Responding to Evolving Expectations



Common Experience



- Land Records
 - Parcel Boundary
 - Parcel Lines
 - Line Length -- Parcel Lines
 - Subdivisions
 - Subdivision Text
 - Acreage Text
 - Dimensions
 - Easement Text
- Administrative
 - County Boundary
 - City Limits
 - OverLayZones
 - LandUse2004
 - Landuse2009
 - Future Land Use Plan
 - Voter Precincts
 - Fire Fee Districts
 - TownShip
 - Elementary School Districts
 - Middle School Districts
 - High School Districts
 - Agricultural District
 - Sanitary District
 - Postal
 - Jurisdiction Text
 - Zoning
 - NC House Districts
 - Electoral Districts
 - Voting Tabulation District

Common Experience



- Level 1: [unreadable]
- Level 2: [unreadable]
- Level 3: [unreadable]
- Level 4: [unreadable]
- Level 5: [unreadable]
- Level 6: [unreadable]
- Level 7: [unreadable]
- Level 8: [unreadable]
- Level 9: [unreadable]
- Level 10: [unreadable]
- Level 11: [unreadable]
- Level 12: [unreadable]
- Level 13: [unreadable]
- Level 14: [unreadable]
- Level 15: [unreadable]
- Level 16: [unreadable]
- Level 17: [unreadable]
- Level 18: [unreadable]
- Level 19: [unreadable]
- Level 20: [unreadable]
- Level 21: [unreadable]
- Level 22: [unreadable]
- Level 23: [unreadable]
- Level 24: [unreadable]
- Level 25: [unreadable]
- Level 26: [unreadable]
- Level 27: [unreadable]
- Level 28: [unreadable]
- Level 29: [unreadable]
- Level 30: [unreadable]
- Level 31: [unreadable]
- Level 32: [unreadable]
- Level 33: [unreadable]
- Level 34: [unreadable]
- Level 35: [unreadable]
- Level 36: [unreadable]
- Level 37: [unreadable]
- Level 38: [unreadable]
- Level 39: [unreadable]
- Level 40: [unreadable]
- Level 41: [unreadable]
- Level 42: [unreadable]
- Level 43: [unreadable]
- Level 44: [unreadable]
- Level 45: [unreadable]
- Level 46: [unreadable]
- Level 47: [unreadable]
- Level 48: [unreadable]
- Level 49: [unreadable]
- Level 50: [unreadable]

New Expectations



- Land Records
 - Parcel Boundary
 - Parcel Lines
 - Line Length - Parcel Lines
 - Subdivision Text
 - Acreage Text
 - Dimensions
 - Easement Text
- Administrative
 - County Boundary
 - City Limits
 - Ocean Zones
 - LandUse2004
 - LandUse2008
 - Future Land Use Plan
 - Water Features
 - Fire Fee Districts
 - Township
 - Elementary School Districts
 - Middle School Districts
 - High School Districts
 - Agricultural District
 - Sanitary District
 - Hospital
 - Jurisdiction Text
 - Zoning
 - MC House Districts
 - District Districts
 - Voting Tabulation District



ArcGIS for Local Government

Planning



- Park and Recreation Finder
- Land Use Public Comment
- Land Use Public Notification
- Community Planning
- Code Violation

Land Records



- Tax Parcel Editing
- Deed Drafter
- Tax Parcel Map Book
- Address Data Management
- Parcel Value for iPhone
- Tax Parcel Viewer
- Value Dashboard
- Community Addressing
- Data Reviewer for Parcels
- Data Reviewer for Addresses

Public Safety



- Flood Planning
- Special Event Planning
- Fire Station Wall Map
- Fire Run Book
- Pre-Incident Planning
- Target Hazard Analysis
- Fire Hydrant Inspection
- Cell Phone Analysis
- Public Safety COP
- Damage Assessment
- My Hazard Information
- EM Maps

Public Works



- Public Information Center
- Campus Editing
- Campus Place Finder
- Citizen Service Request
- SnowCOP
- My Government Services
- Water Utility Network Editing
- Water Utility Capital Planning
- Water Utility Mobile Map

Elections



- Election Results
- Election Polling Places

Local Government



- Information Model
- Basemaps
- Data Reviewer for Basemaps
- Executive Dashboard
- Maps and Apps Gallery
- Model Organization

ArcGIS for State Government

DOT

- Traveler Information System (511)*
- Railroad Crossing Inspection*
- Right of Way Management*
- Crash Analysis Tools*
- NEPA (Environmental Review)*



Environment

- Permit Processing Dashboard
- Permit Expiration Dashboard
- Permit Status
- Permit Inspection
- License Location Locator
- Water Access Locator
- Wildlife Management Area Locator
- Environmental Impact Assessment*
- Storm water Notice of Intent*
- Trail Locator
- Model Organization



Public Health

- Beach Monitoring
- Water Quality Monitoring*
- Restaurant Inspection*
- Assisted Living Facility Inspection*
- Medicare/Medicaid Super Utilization*
- Healthcare Utilization Atlas*



Emergency Management

- Flood Planning
- Special Event Planning
- Pre-Incident Planning
- Target Hazard Analysis
- Common Operational Picture
- Damage Assessment
- My Hazard Information
- EM Maps
- Model Organization



Economic Development

- Live, Work, and Locate*
- Site Finder*



GIS/IT

- Model Organization
- Executive Dashboard
- Data Aggregation Patterns*

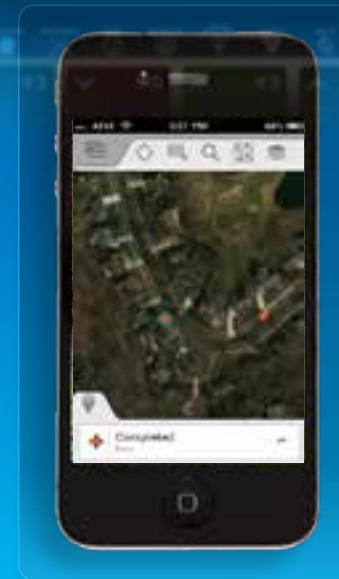
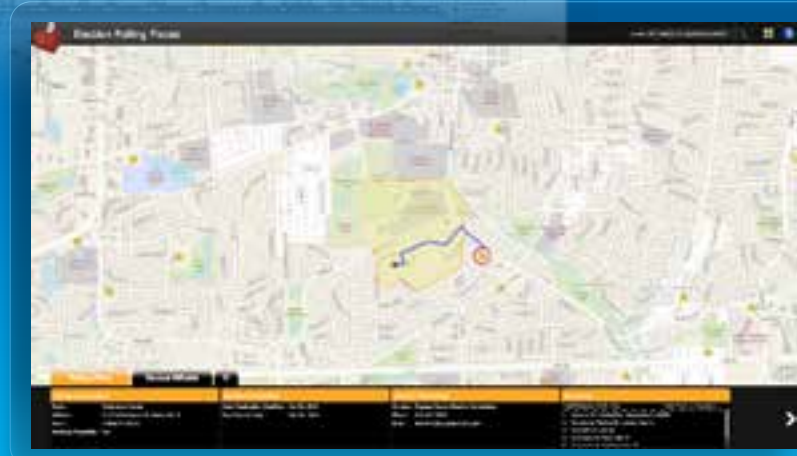


The Result

Increased value from your GIS platform

- Made it easier to deploy a geospatial platform
- Addressed many common constraints in government
- Better collaboration between Esri and the user community

Relevant, Easy to Use...



Making Your Work Discoverable



Take a Look?



Our Mission

Help increase the value of GIS in local government organizations

- Make it easier to deploy ArcGIS
 - Deliver applications quickly throughout your organization
 - Stay current with future releases / avoid legacy technology
 - Create a platform of geospatial data that can be leveraged by many
- Address common constraints in state and government
 - Size and skills of staff
 - Budget and time available to implement
 - Technical breadth and support of existing systems
 - Domain expertise
- Empower the community to contribute
 - Users
 - Partners

Configuration Patterns

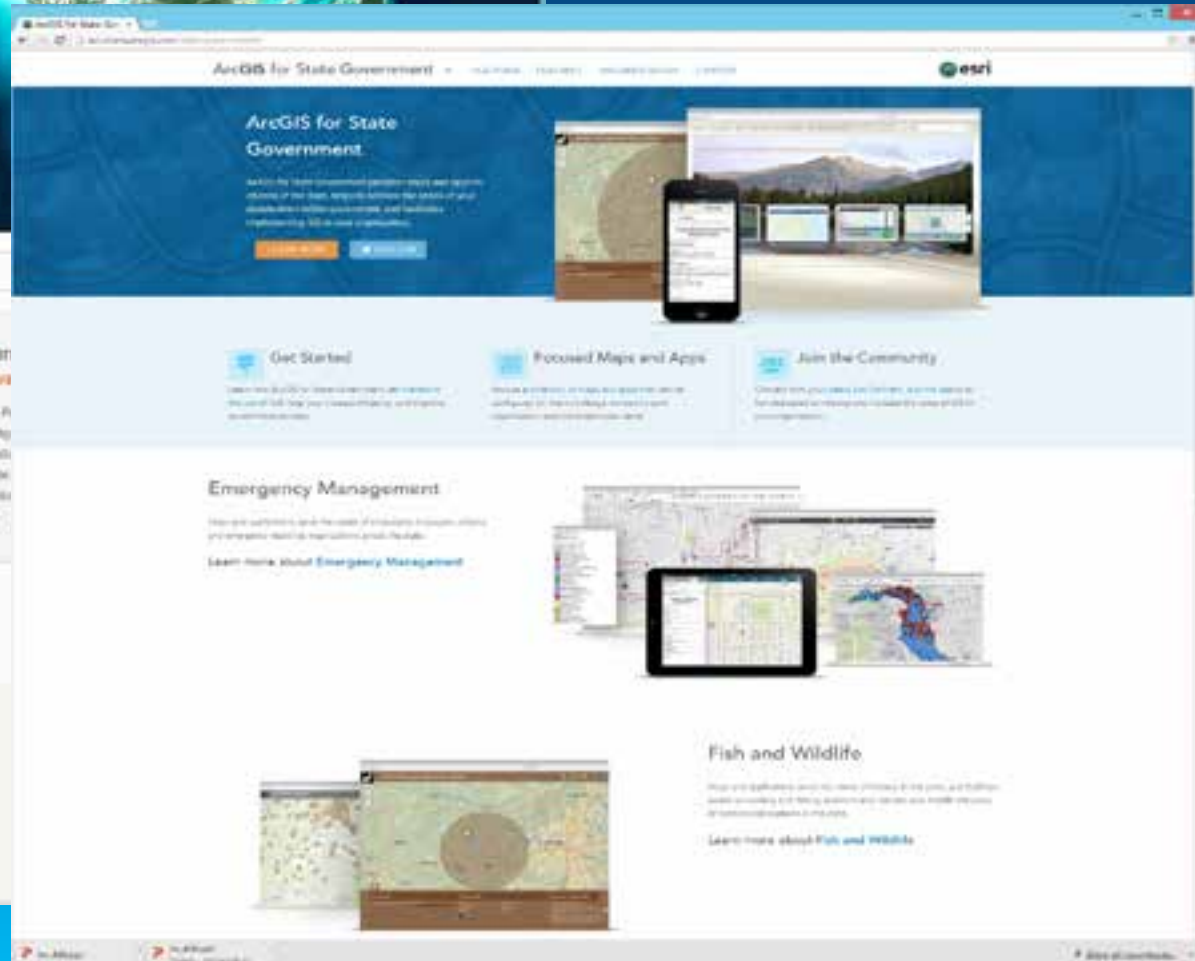
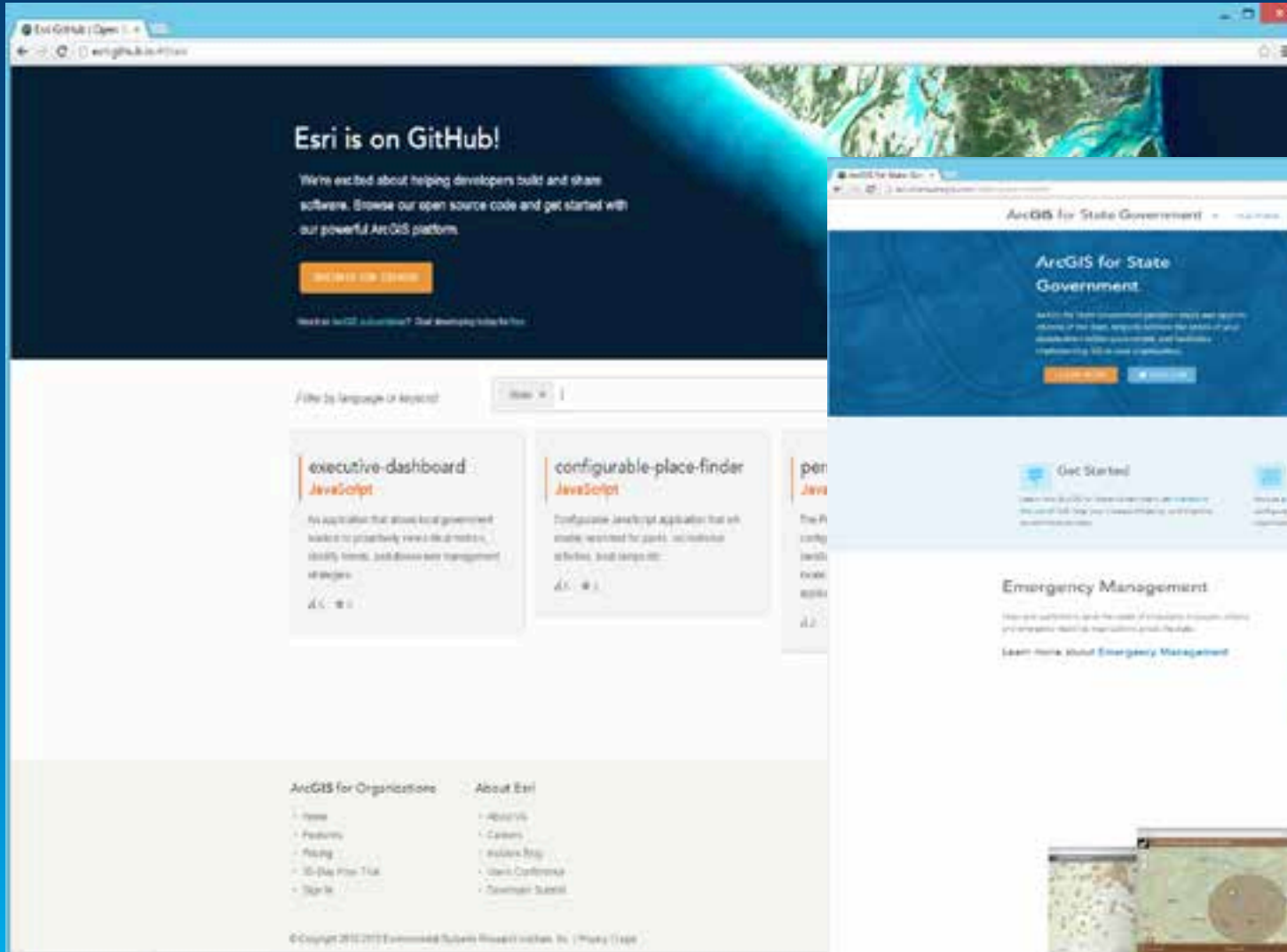
- Influential factors
 - COTS and configurable solutions strategy
 - Deployment time
 - Technical expertise
- Three configuration patterns
 - Complete system adoption
 - Publish and adopt
 - Sample code and customize
- Where do you start?
 - With your business requirements
 - Align them with maps and apps
 - Review system configuration patterns

The Community



State Government Community

An online community where Local Government users and partners can collaborate



Local Government Community

An online community where Local Government users and partners can collaborate

ArcGIS for Local Government | PLATFORM | FEATURES | DOCUMENTATION | SUPPORT | esri

The Solution for Your Local Government

Leverage your geographic information and the ArcGIS Platform to improve government activities and enhance citizen services.

[TAKE A TOUR](#) [FOLLOW](#)

Please to this, you
your own
Public Safety

Welcome to our Local Government

Get Started in Your Organization

Learn how ArcGIS for Local Government can transform your use of GIS, help you increase efficiency, and improve government services.

Deploy Focused Maps and Apps

Browse a collection of maps and apps that can be configured for knowledge workers in your organization and the citizens you serve.

Join the Community

Connect with your peers, Esri Partners, and the teams at Esri dedicated to helping you increase the value of GIS in your organization.

Land Records

Manage an accurate inventory of real property, analyze the value of land and associated improvements, describe who owns the land, and convey land use and zoning regulations.

What's Next

Continuously Evolving Solution Offering

It's a Process

Continuously Evolving Solution Offering

- New maps and apps
 - Transportation, Fish and Wildlife, Fire Service, Law Enforcement, Public Works, Economic Development, Public Health, etc.
- Ongoing application updates
 - Support for cloud services, smartphone support, new features, bug fixes, etc.
- Continued Community Engagement
 - Meetups, videos, more help, expanded partner & professional services offerings, etc.

Thank You



<http://solutions.arcgis.com>



<http://meetup.com/ArcGIS-for-Local-Government/>

<http://www.linkedin.com/groups?gid=5114903>



@ArcGISLocalGov

@ArcGISStateGov



<http://esri.github.com>

Federal GIS Conference 2014

February 10–11, 2014 | Washington DC



**Don't forget to complete
a session evaluation form!**

Federal GIS Conference 2014

February 10–11, 2014 | Washington DC



Networking Reception

Smithsonian National Museum of Natural History

Tuesday, 6:30 PM–9:30 PM

Bus Pickup located on L Street

Federal GIS Conference 2014

February 10–11, 2014 | Washington DC



Print your customized Certificate of Attendance!

Printing stations located in Hall B
and the 140/150 Room Concourse.

Federal GIS Conference 2014

February 10–11, 2014 | Washington DC



GIS Solutions EXPO, Hall B

Monday, 12:30 PM–6:30 PM

Tuesday, 10:45 AM–4:00 PM

- Exhibitors
- Hands-On Learning Lab
- Technical & Extended Support
- Demo Theater
- Esri Showcase

Federal GIS Conference 2014

February 10–11, 2014 | Washington DC



Interested in diving deeper into Esri technology?

Add a day to your Fed GIS experience and register to attend the Esri DevSummit Washington DC. Stop by the registration counter to sign up.