

Homeland Infrastructure Foundation Level Data (HIFLD) Working Group



Homeland Security Enterprise Enablement Part I
HIFLD/HSIP Overview
11 February 2014

Presentation Agenda

- HIFLD Overview
- HSIP Overview
- Ongoing Efforts
- Summary



Homeland Infrastructure Foundation
Level Data (HIFLD) Working Group

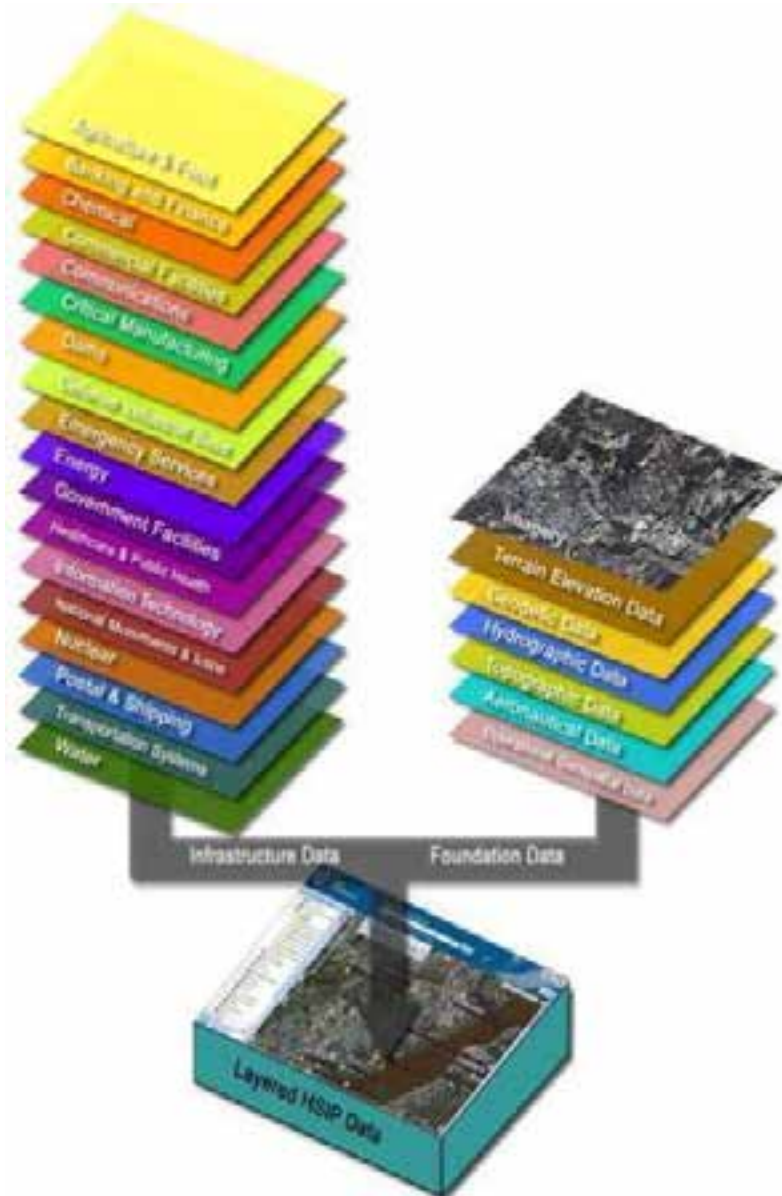
HIFLD Objective

Support Domestic Infrastructure Data Gathering, Sharing and Protection, Visualization, and Spatial Knowledge Management for Homeland Defense, Homeland Security and National Preparedness – Prevention, Protection, Mitigation, Response and Recovery Communities

§ Everyone Wants Situational Awareness

§ Everyone Wants a Common Operational Picture

HIFLD Builds Partnerships and Obtains Best Available Data that is Useful, Usable and Used



Homeland Infrastructure Foundation Level Data (HIFLD) Working Group

HIFLD Official Members

Homeland Infrastructure
Foundation Level Data
(HIFLD)

Working Group
Charter



October 2011



Homeland Infrastructure
Foundation Level Data
(HIFLD)

Working Group
Charter



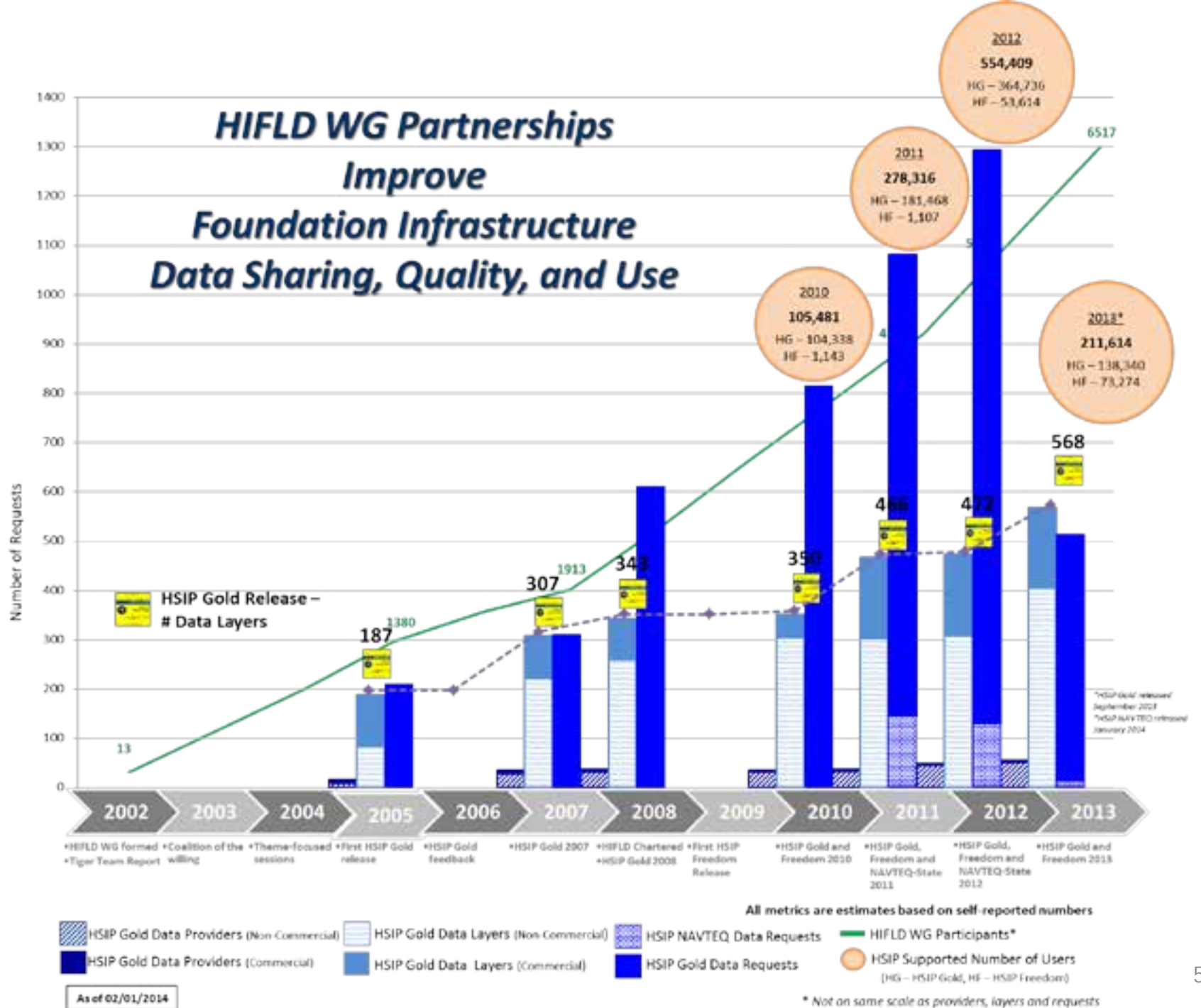
October 2011

Over 6,510 Participants From
14 Executive Departments, 102 Agencies and 53 States/Territories



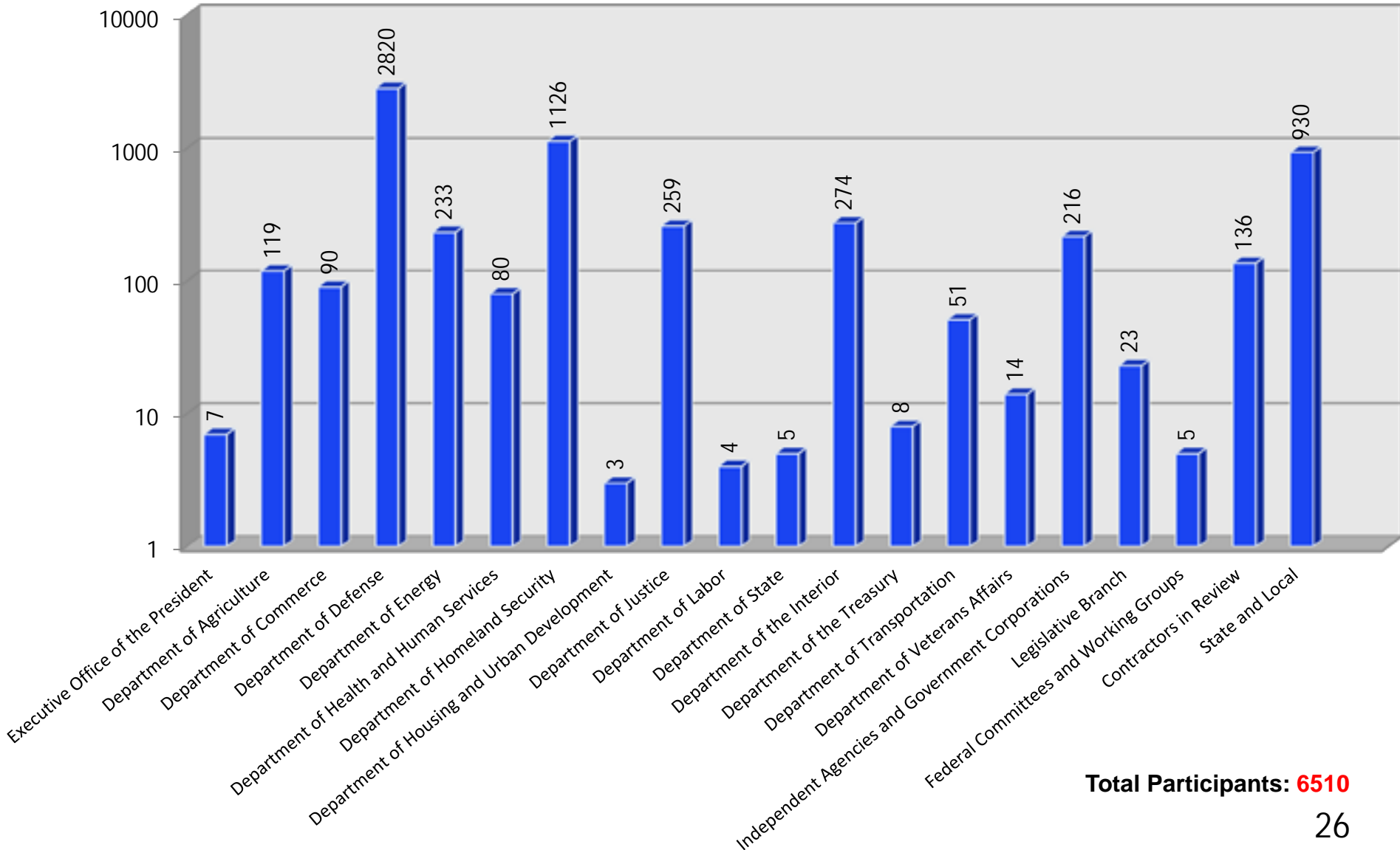
Homeland Infrastructure Foundation
Level Data (HIFLD) Working Group

HIFLD WG Partnerships Improve Foundation Infrastructure Data Sharing, Quality, and Use



HIFLD WG Participants

02/01/2014



Total Participants: 6510

State/Local Government HIFLD WG Participants

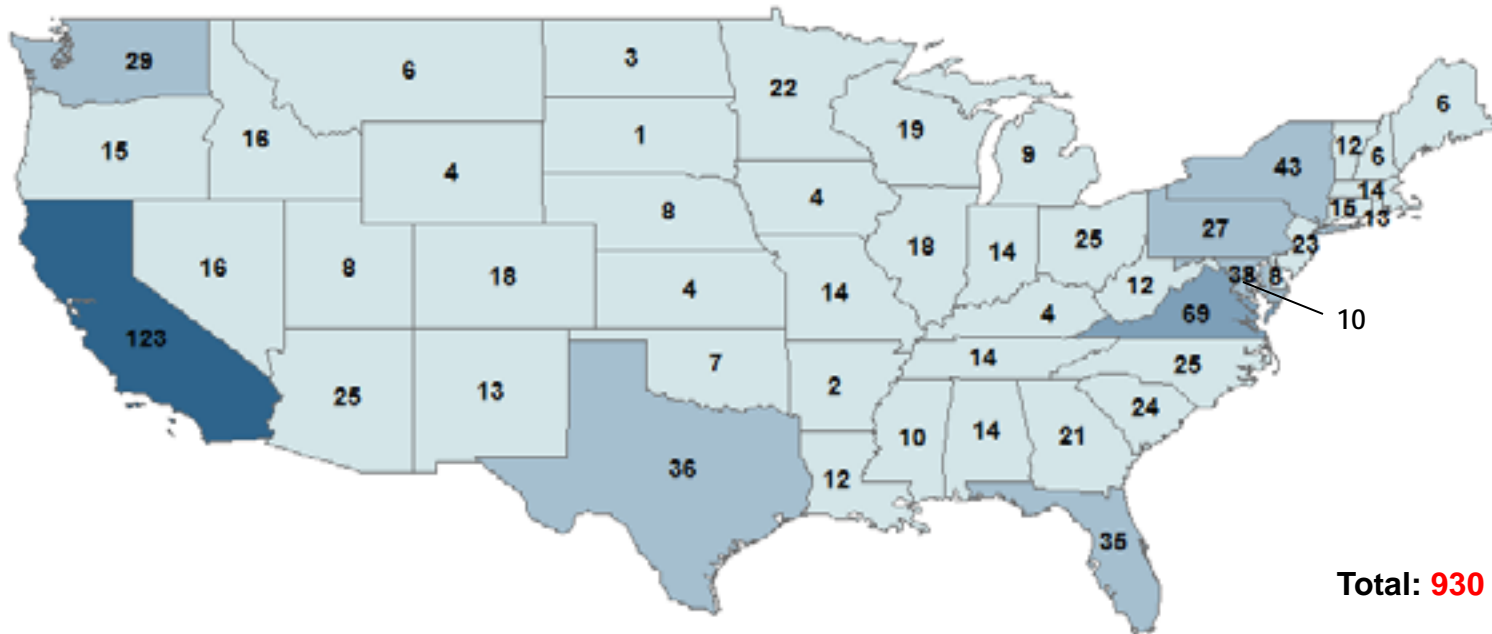
02/01/2014



Alaska



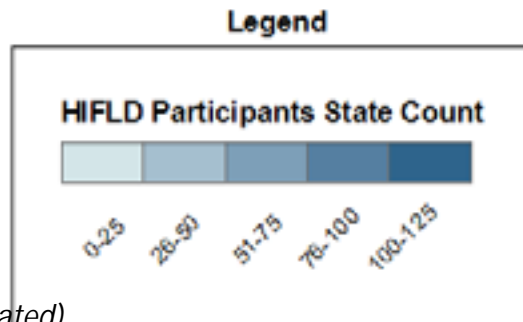
Guam



Total: 930



Hawaii



Puerto Rico and Virgin Islands



HIFLD Completed Sessions

Focused on National and Defense Critical Infrastructure Sectors:

Jul 04:	Transportation	Mar 09:	"Tools, Models, Viewers"
Sep 04:	ISR and Threat (S)	Jul 09:	Transportation
Nov 04:	Public Works / Energy	Sep 09:	H1N1 Geospatial Sharing
Feb 05:	Health Affairs / Emergency Services	Jan 10:	Emergency Management
Apr 05:	Telecom / Global Info Grid (GIG)	May 10:	Energy
Jun 05:	Defense Industrial Base	Jul 10:	HSIP Gold 2010 Feedback
Aug 05:	Chemical Industry & HAZMAT / Water	Nov 10:	Telecom / Global Info Grid (GIG)
Oct 05:	Postal & Shipping / Defense Logistics	Feb 11:	Defense Industrial Base / Critical Manufacturing
Feb 06:	HSIP Gold V1 Data Feedback Session	Apr 11:	Nuclear / CBRNE Response
Feb 06:	Banking & Finance / Food & Agriculture	Jul 11:	HSIP Gold 2011 Feedback / Symbology
Apr 06:	National Lab Geospatial HD/HLS Projects	Sep 11:	Remote Sensing, Imagery and Enhanced Elevation for the Nation
Jun 06:	Emergency Operations Centers	Jan 12:	Cross Border Information Sharing and Supply Chain
Oct 06:	Intel / Threat Monitoring and Reporting (S)	Apr 12:	Flooding and Hurricane Response
Jan 07:	Government and Commercial Facilities	Jul 12:	HSIP Gold 2012 Feedback Live Feeds
Apr 07:	Energy and Defense Public Works	Oct 12:	Cyber security and Energy Resilience
Jun 07:	Man Made and Natural Hazards Modeling	Jan 13:	Wild Fires and Formalizing Data Partnerships: API Standards and SLAs
Aug 07:	HSIP Gold V2, DHS HLS Data Model	May 13:	Current National Policies, Domestic Infrastructure Security and Geospatial Data
Nov 07:	HSIP Gold Data V2 Feedback Session	Sep 13:	HSIP Gold/Freedom Feedback Session and Online Dynamic Services
Jan 08:	Sharing and Protecting Infrastructure Information	Nov 13:	Climate Data and Mapping for Infrastructure Resilience
Mar 08:	Health / Pandemic Influenza and EAs	Feb 14:	<i>Law Enforcement - Geospatial Data Sharing and Requirements for Enhanced Situational Awareness</i>
Jun 08:	Chemical / Noble Resolve 2008		
Oct 08:	Interdependency Modeling and Analysis		
Jan 09:	HSIP 2008 Feedback / Cross Border Infrastructure		

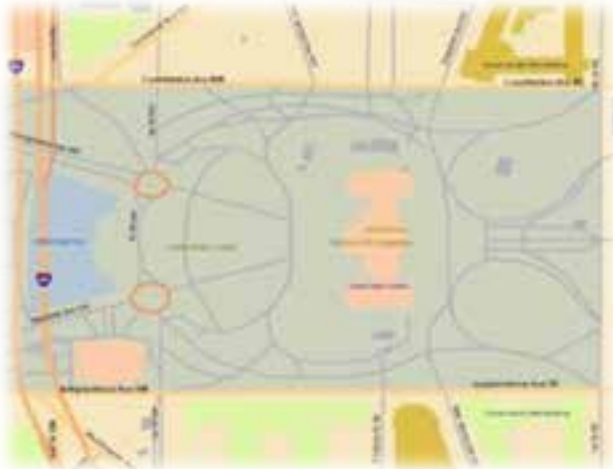


**Homeland Infrastructure Foundation
Level Data (HIFLD) Working Group**

Homeland Security Infrastructure Program (HSIP)

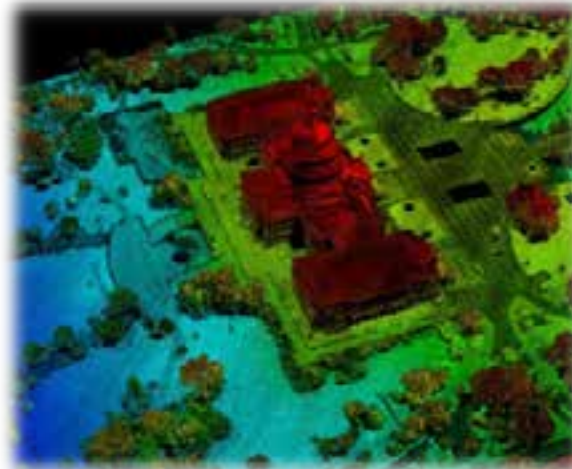
Vector (HSIP Gold)

- Compilation of 568 Vector layers comprised of Commercial, Federal and State level Acquisitions.
- Delivers Common Operational Data to the GEOINT Analyst



Elevation

- Acquire unclassified high-fidelity 1 meter elevation data over HSIP 133 major urban core areas of the U.S. – 5 year refresh schedule...shorter cycles as needed



Imagery

- Acquire unclassified high-resolution ortho-imagery (12 inch GSD or better) over HSIP 133 major urban areas of the U.S. – 2 to 4 year refresh schedule



“HSIP Gold is the most widely used infrastructure data set across the Federal Government.”

– Ms. Caitlin Durkovich, Assistant Secretary for Infrastructure Protection, DHS



The National Map and FEMA GeoPortal



HSIP Freedom
73,274 Supported Users

NAVTEQ State Release
136,480 Supported Users (2012)



125,555 Supported Users

Access

Federal

State, Local & Tribal

Industry Partners

Public

Data Providers

Data Content





State Fusion Centers, EOCs, State GIS Coordinators, State EM Coordination

Presidential Declarations



Mission Specific Services and Data, examples include:

NOAA NWS Weather – ORNL EARSS – USGS Stream Gages – HH5 HAxBED – NOAA nowCOAST – GeoMAC – USGS ShakeMap – SAGE

Data	What is it?	Who can access it?	How can I access it?	What do I need?
 <p>HSIP Gold</p> 	<p>A compilation of Common Operational Geospatially Enabled Base-Line Data to support to Homeland Security, Homeland Defense and National Preparedness— Prevention, Protection, Mitigation, Response and Recovery mission communities.</p> <p>Data is U//FOUO.</p>	<p>Federal Government Agencies</p> <p><i>(to include National Guard Bureau – JFHQ State)</i></p> <hr/> <p>State and Local Government Agencies sponsored by FEMA with a Presidential Disaster or Emergency Declaration.</p> <hr/> <p>All Federal, State, Local, Tribal and Territorial Government Agencies and Industry Partners can view when served by a password protected Federal System.</p>	<p>Request DVD set on HIFLD site at https://www.hifldwg.org/hsip_gold</p> <p>Requests handled by NGA.</p> <p>Data is in vector format, organized in geodatabases.</p> <hr/> <p>Access via Map Services on the DHS Geospatial Information Infrastructure (GII) at https://gii.dhs.gov/</p> <p>"GII Services" for WMS, REST, SOAP, API or KML.</p> <p>"DHS Earth" for Google Earth KML file</p> <p>"OneView" for web-based analytic viewer.</p>	<p>HIFLD account. http://www.hifldwg.org/</p> <p><i>(Government sponsor and contract information is required for anyone who is not a federal, state or local government employee.)</i></p> <hr/> <p>HIFLD account. http://www.hifldwg.org/</p> <p>FEMA Sponsor</p> <p>Presidential Declaration # http://www.fema.gov/disasters</p> <hr/> <p>HSIN account. https://hsin.dhs.gov</p> <p><i>(No specific Community of Interest (COI) required).</i></p> <p><i>(Government sponsor information is required for anyone who is not a federal, state or local government employee.)</i></p>
<p>HSIP Freedom</p> <p>https://hsis.dhs.gov</p> 	<p>Subset of HSIP Gold data that is license-free and does not include the commodity data.</p> <p>Data is U//FOUO.</p>	<p>Federal, State, Local, Tribal and Territorial Government Agencies and Private Industry Partners.</p>	<p>Download from DHS GII HSIP Freedom page (instructions online)</p> <p>Requests handled by DHS.</p> <p>Data is in vector format, organized in geodatabases.</p>	<p>HSIN account. Access the Geospatial Resources Community (GRC). https://hsin.dhs.gov/fed/gis/Pages/default.aspx</p> <p><i>(Government sponsor information is required for anyone who is not a federal, state or local government employee.)</i></p>
<p>HSIP NAVTEQ State Release</p> 	<p>The HSIP-NAVTEQ data uplifted by NGA is also a subset of HSIP Gold and includes street data, points of interest data, and route analysis.</p> <p>Data is U//FOUO.</p>	<p>State Fusion Centers, State Emergency Operation Centers (EOC), State Emergency Management Coordinators and State GIS Coordinators.</p>	<p>Request DVD set on HIFLD site at https://www.hifldwg.org/navteq</p> <p>Data is in Smart Data Compression (SDC) format.</p>	<p>HIFLD account. http://www.hifldwg.org/</p>

Government Data Providers

U.S. Department of Agriculture (USDA)

Forest Service

U.S. Department of Commerce (DOC)

U.S. Census Bureau

National Oceanic and Atmospheric Administration (NOAA)

U.S. Department of Defense (DoD)

National Geospatial-Intelligence Agency (NGA)

Defense Installation Spatial Data Infrastructure (DISDI)

Defense Contract Management Agency (DCMA)

U.S. Army

U.S. Army Corps of Engineers (USACE)

National Guard Bureau (NGB)

Air National Guard (ANG)

Army National Guard (ARNG)

U.S. Department of Education (DOEd)

U.S. Department of Energy (DOE)

Office of Energy Efficiency & Renewable Energy

National Renewable Energy Lab (NREL)

Office of Science

Oak Ridge National Laboratory (ORNL)

U.S. Department of Health & Human Services (HHS)

U.S. Department of Homeland Security (DHS)

Federal Emergency Management Agency (FEMA)

Directorate for National Protection and Programs (NPPD)

U.S. Coast Guard (USCG)

U.S. Customs and Border Protection (CBP)

U.S. Department of the Interior (DOI)

Bureau of Indian Affairs (BIA)

Bureau of Ocean Energy Management, Regulation and Enforcement (BOEMRE)

Minerals Management Service (MMS)

U.S. Fish and Wildlife Service

U.S. Geological Survey (USGS)

National Park Service (NPS)

U.S. Department of Justice

Federal Bureau of Investigations (FBI)

U.S. Department of Transportation (DOT)

Federal Aviation Administration (FAA)

Federal Highway Administration (FHA)

Federal Railroad Administration (FRA)

Bureau of Transportation Statistics

U.S. Department of Veterans Affairs (VA)

U.S. Environmental Protection Agency (EPA)

U.S. General Services Administration (GSA)

U.S. Nuclear Regulatory Commission (NRC)

U.S. Postal Service (USPS)

Federal Communications Commission (FCC)

Federal Deposit Insurance Corporation (FDIC)

National Credit Union Administration (NCUA)

Non-Governmental Organizations

American Red Cross (ARC)

Geospatial Multi-Agency Coordination

State/Local Governments



**Homeland Infrastructure Foundation
Level Data (HIFLD) Working Group**

HSIP Gold 2013 Commodity Data

- **NAVTEQ Corporation**

- *Transportation*
- *Core Points of Interest (hotels, restaurants, gas stations etc)*
- *Routing and Address matching*
 - Standalone locators built for ArcGIS 9.3 and 10.0
 - Improved data dictionary for the 3Q2011 SDC deliverable
 - SDC Definition queries and layer files that utilize Street Restrictions (such as Hazardous Material Restrictions, Semi or Tractor Trailer Restrictions, etc...)

- **Ventyx**

- *Electrical Energy*

- **PLATTS**

- *Oil and Natural Gas*

- **Dun and Bradstreet (D&B)**

- *Manufacturing and Business Points*

Homeland Infrastructure Foundation
Level Data (HIFLD) Working Group



HSIP Gold 2013 Data Licensing

- **HSIP Gold Base Licensing (NGA Funded)**
 - *United States Federal Government License*
 - *Canadian Government Partnership License*
 - *Non-Federal Emergency Data Release License*
 - § *The designated lead federal agency shall determine which non-Federal agencies receive access to the licensed data under a presidentially declared national emergencies or crisis.*
- **HSIP Gold Data Disclosure Non-Emergency (NGA Funded)**
 - *Non-Federal government disaster/emergency response agencies and/or personnel supporting the Homeland Security mission to “view” the data via a Federal Government owned, secure (i.e., password protected) system – restricted from downloading the data*
- **HSIP Gold Data Release & Disclosure Non-Emergency (NGA Funded for NAVTEQ Data Release)**
 - *In support of State Fusion Centers, EOCs, State GIS Coordinators and State Emergency Management Coordination*



HIFLD works to make HSIP data more readily accessible to all levels of Government and increase the use of common operational data

HSIP Gold 2013 Update

Total Number of 2010 Data Layers:	336
Total Number of 2011 Data Layers:	451 *
Total Number of 2012 Data Layers:	478 *
Total Number of 2013 Data Layers:	568 *
Change in Total Number of Layers	+19%

Unchanged Layers:	186 (32%)
New Layers:	115 (20%)
Updated Layers: **	278 (48%)
Replacement Layers: ***	4 (<1%)
2011 Layers Deleted w/o Replacement:	1

* Does not include 5 core road layers (e.g., streets) which are logically part of the Infrastructure TransGround sector that are provided in the NAVTEQ SDC product.

** Updated Data Layers were provided by the same source for 2012 and 2013

*** Replacement Data Layers were provided by a different source in 2013 (vs. 2012)



Homeland Infrastructure Foundation
Level Data (HIFLD) Working Group



Homeland Infrastructure Foundation-Level Data (HIFLD) Working Group



Register
for upcoming
HIFLD WG



Submit
HSIP
Request



Provide
HSIP
Feedback



HIFLD WG
Roster



Next HIFLD Working Group

Date:
5-6 February 2014

Theme:
Law Enforcement

Get HSIP Today



Let's Start Now!

Infrastructure Information Community Model

- Graphical representation of the infrastructure information community which includes HIFLD WG members and participants (6,396+)
- Depiction of data, technical, and operational interactions
 - Mission Areas
 - Mission Partners
 - Data/Production Capability
 - Data users/providers
 - Event types (subject areas)
- HSIP Gold: Common operational, geospatially enabled baseline data



Homeland Infrastructure Foundation
Level Data (HIFLD) Working Group

Summary

- HIFLD partnership is a great model of good government
- HIFLD partnership connects operational users with content providers
- HIFLD community participation continues to steadily grow
- Provides increased access to data, products and best practices
- Provides improved geospatial capability for HLS, HD and NP - PPMR &R communities
- HIFLD partners seek continued support and advocacy

HIFLD works to continuously improve HSIP data, keep it useful, usable and used and get it into the hands of the users at all levels of government...



Homeland Infrastructure Foundation
Level Data (HIFLD) Working Group

WWW.HIFLDWG.ORG

***Thanks For Your Time and
Discussion***

<http://www.youtube.com/watch?v=IEhjN2y-o54>



Homeland Infrastructure Foundation
Level Data (HIFLD) Working Group

HIFLD Points of Contact

*Todd Spangler
OASD HD&ASA (Dir, DCI)
(703) 697-5677
Todd.Spangler@OSD.mil*

*Chris Vaughan
GIO, Strategic Integration Group
Office of Response and Recovery
(202) 212-1739
Christopher.Vaughan2@fema.dhs.gov*

*Mike Norman
Director, Infrastructure Information
Collection Division
(703) 235-9372
Michael.Norman@hq.dhs.gov*

*Justin Sherin
HIFLD WG Staff
(757) 478-1393
Sherin_Justin@bah.com*

*Robert Bewley
USGS National Geospatial Program
(703) 648-5660
RBewley@usgs.gov*

*Steve Alness
Deputy Director, Deputy Director, Office of
Future Xperience (XF)
(571)557-6277
Steven.g.alness@nga.mil*

*David Alexander
Acting Director, Geospatial
Management Office DHS / OCIO / OAT
p) 202-447-3727
David.Alexander1@dhs.gov*

*Amanda Ross
HIFLD WG Staff
(757) 619-2895
Ross_Amanda@bah.com*



Homeland Infrastructure Foundation
Level Data (HIFLD) Working Group





HIFLD – FGDC Strategic Alignment

Prepared by DHS Geospatial Management Office

11 Feb 2014



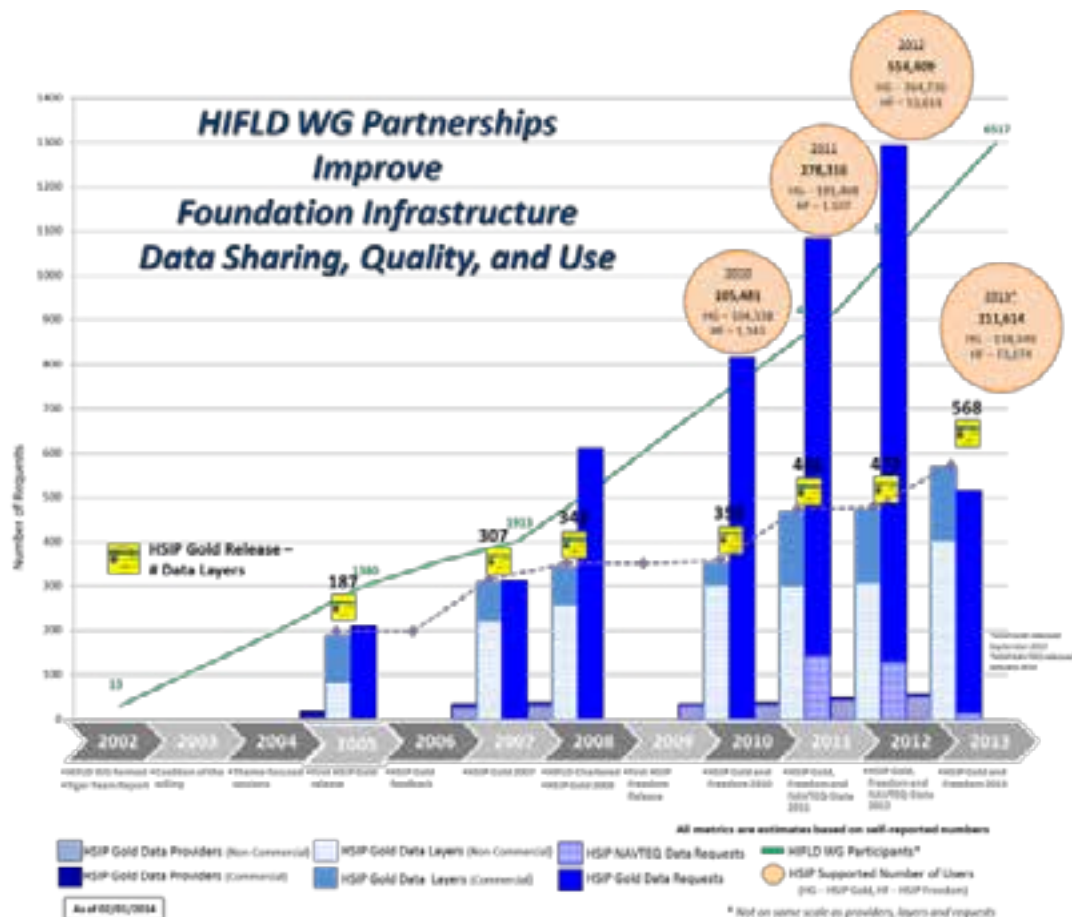
Discussion Points

- § Where we are now with HIFLD
- § Way Forward
- § HIFLD – FGDC Alignment
- § Next Steps for Governance
- § Question and Answer/Feedback



Where we are now with HIFLD

The Homeland Infrastructure Foundation Level Data Working Group (HIFLD) was established in 2002 and chartered as a joint effort in 2007 by DoD, DHS, NGA, and DOI/USGS.





Way Forward

§ Enhance coordination between Operators & Data Providers

- § Strengthen FGDC interactions with DOD\IC\HLS\LE communities
- § Facilitates availability of common operating data across the national community

§ Formalize HIFLD Governance and demonstrates strategic level coordination

- § Promotes national efficiencies for geospatial data sharing (at all operating levels)
- § Bolsters national geospatial support for PPD 8, 21, information sharing, and digital government

§ Align HIFLD-FGDC contributions to the National Spatial Data Infrastructure



HIFLD-FGDC Alignment

§ Adoption of revised HIFLD Charter

- § Establishes a formal governance body – the HIFLD Subcommittee
- § Accountable to FGDC Steering Committee and FGDC Coordination Group

§ Goals and Objectives

- § Leverage existing and authoritative resources to satisfy multiple requirements and to minimize redundant data production
- § Perform cost estimates and studies to ensure data acquisition is cost efficient
- § Support coordination of standards, goals, and objectives established by Federal, National, and International Standards
- § Support the maintenance and archiving of digital homeland infrastructure geospatial information and associated metadata

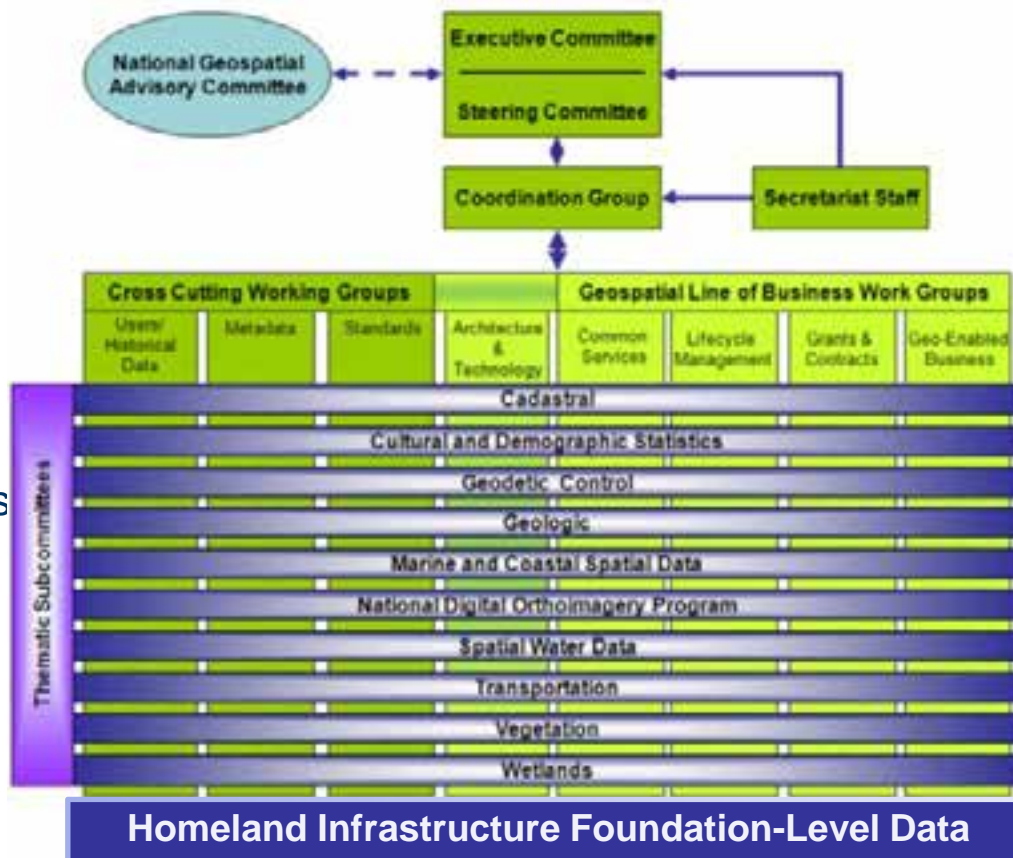


Figure: Overview of the structure of the various components of the FGDC



Next Steps for Governance

- § Charter approved by FGDC Coordination Group
- § Presentation to FGDC Steering Committee on 13 Feb for formal adoption
- § Establishment of Program Management Group to support HIFLD Subcommittee
 - § Provide direction and guidance on future HIFLD activities (Working Group sessions, outreach and coordination, collection of HSIP Feedback, etc)
 - § Submit annual goals and objectives plan to FGDC Coordination Group and Secretariat
 - § Catalog annual summary of accomplishments



§ Community Feedback

- § Catalog available content stores
- § Improve availability and discovery
- § Better coordination of collection requirements
- § Shared resources

Questions



Homeland Infrastructure Level Data Working Group

www.hifldwg.org
hifldwg@bah.com

