



**Homeland  
Security**

# **Geospatial Information Infrastructure (GII)**

**Esri Federal UC Update – Feb 2014**

**Prepared by GMO**

**11 Feb 2014**



# Agenda

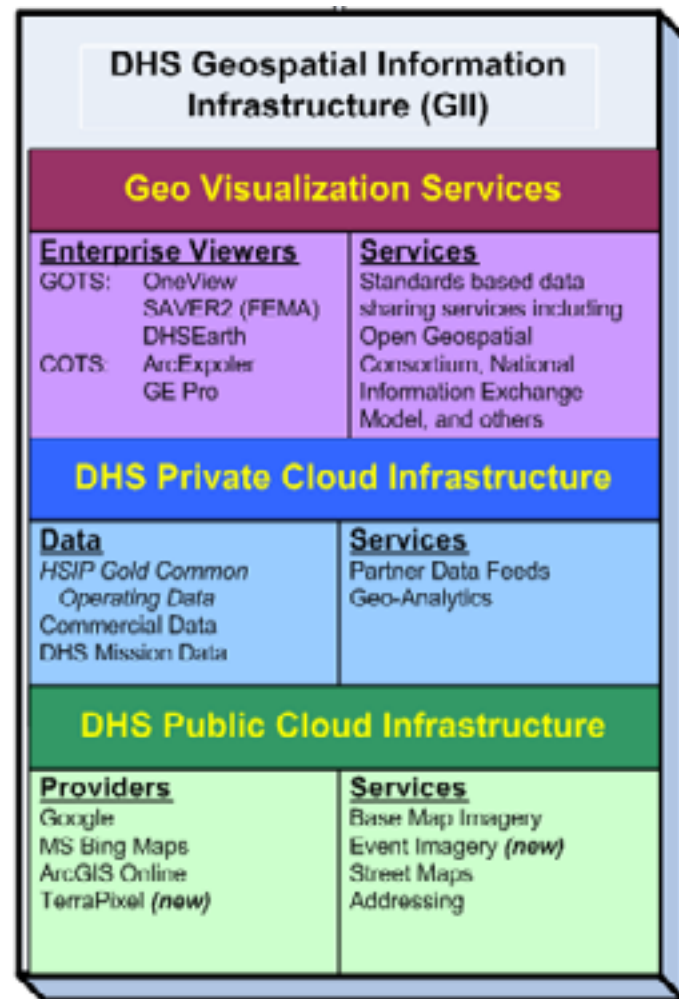
- § What is the GII?
- § GII Capabilities
  - § New Landing page
  - § New Capabilities
- § GII Metrics
- § How to Access GII Services
- § Future GII Capabilities
- § Contacts - Questions



# GII Overview

## What is the GII?

- § Collection of:
  - § Enterprise GeoData
    - § Operation Data
    - § Foundation Data
  - § Application Services
    - § Geo Visualization Services
    - § Geocoding Services
    - § Geo Content Management – Collaboration Services
  - § Infrastructure Support in DHS Data Center
    - § Infrastructure as a Service/Software as a Service
- § Leverages Homeland Security Information Network (HSIN) Identity Management Services





**GALLERY**   **MAP**   **GROUPS**   **MY CONTENT**  



## Geospatial Information Infrastructure (GII)

The *GII* provides a platform for shared and trusted geospatial data, services, and applications for use by the Homeland Security community

### Apps & Services

- One View**  
Powered by OIT
- Geocoding**  
Powered by OIT
- HSP Freedom**  
Powered by OIT
- HSP Service**  
Powered by OIT  
*Coming Soon*

### Coordination Resources

- GeoConOps**
- OGC**  
Open Geospatial Consortium

### User Guide

Get help on GII functionality

### How To Videos

Videos on How to Use the GII

### Create a Map

Make a map mashup

### Find Groups

Discover groups to find content

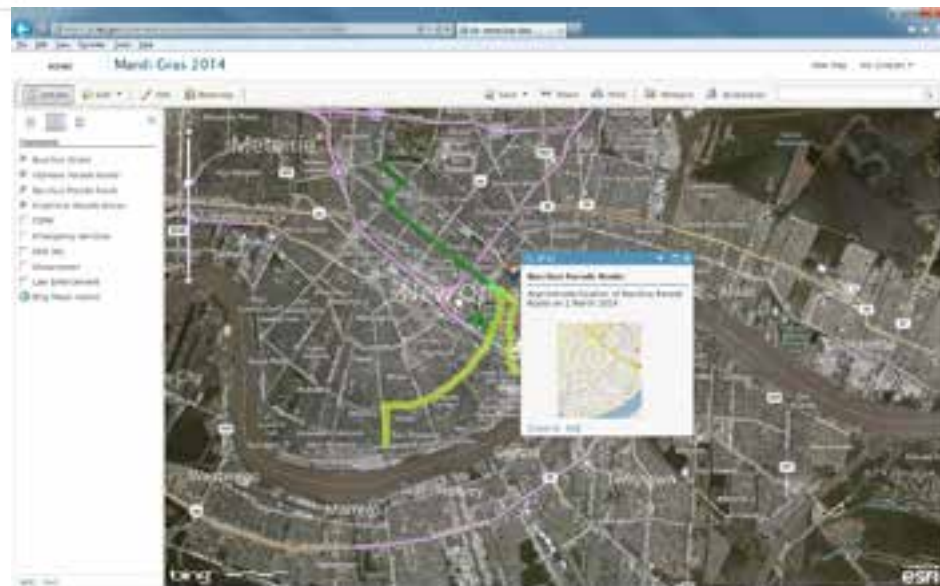
### Trending Topics

- POWER OUTAGE**  
Fairfax City Power Outages
- Mardi Gras 2014**
- Interior Geospatial**
- 2014 State of the Union**



# GII New and Enhanced Capabilities

- Geospatial Data Access
- Discovery and Content Management
- Simple Mapping Tool
- Share Maps and Apps with Others
- Communication and Collaboration Tool



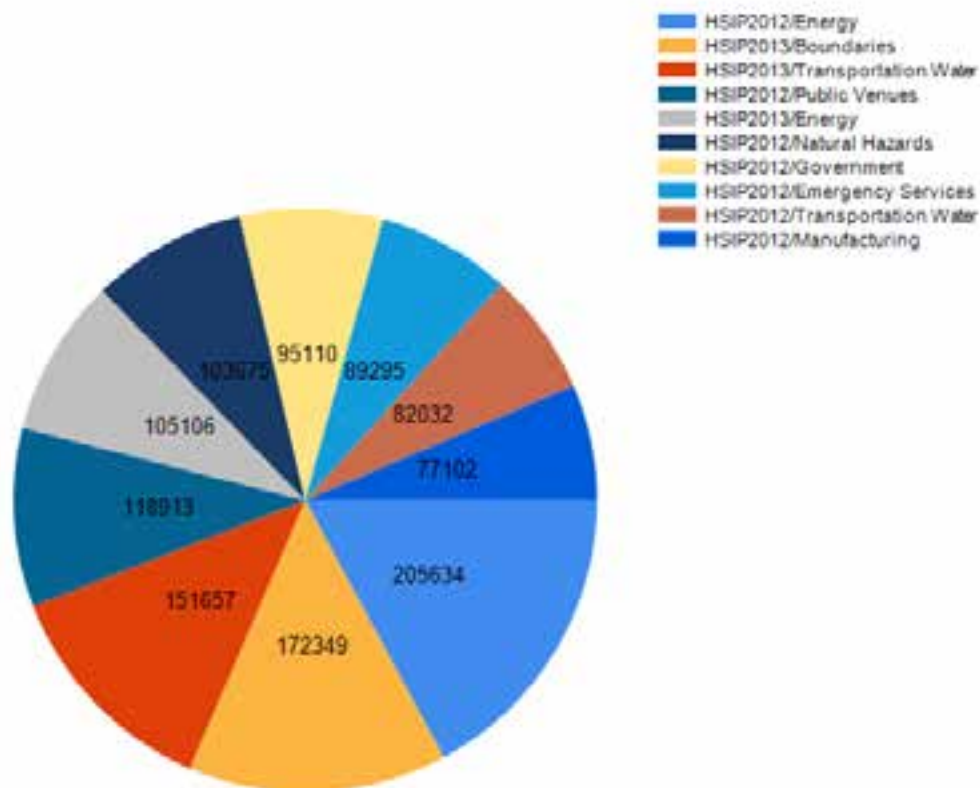


# GII Data Metrics

Top Twenty SubLayers from 8/5/2013 to 2/7/2014

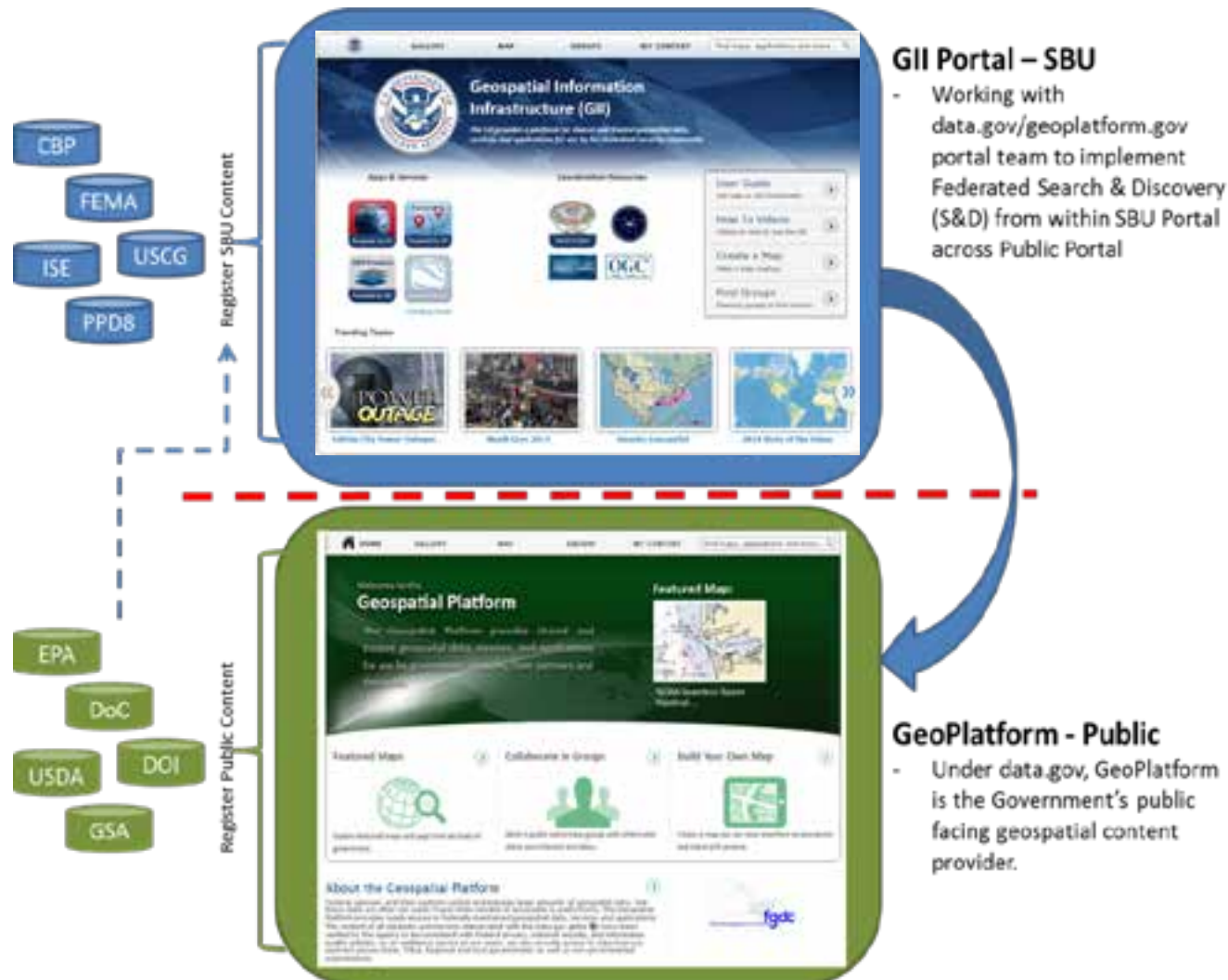


Top Ten Layer Usage 8/5/2013 2/7/2014





# Future GII Capabilities





# GII – Geoplatform Search Example



File Edit View Favorites Tools Help

Show: Web Content Only My Organization LEWIS SUMMERS Notifications

GALLERY MAP GROUPS MY CONTENT Water

## Search Results




Add New Server

Keywords  
(e.g. storm, water, etc.)

Search

Filter Type

Show 6 results

Relevance	Title	Owner	Rating	Views	Date
	<b>Water Supply</b> HSIP 2013 Water Supply Map Service by CAITLIN.BREEN Last Modified: January 29, 2014 (0 ratings, 0 comments, 20 views)				
	<b>Transportation Water</b> HSIP 2013 Transportation Water Map Service by CAITLIN.BREEN Last Modified: January 28, 2014 (0 ratings, 0 comments, 34 views)				
	<b>DHS 1AL</b> HSIP 2013 DHS 1AL Map Service by CAITLIN.BREEN Last Modified: January 29, 2014 (0 ratings, 1 comment, 65 views)				

More Information

What types of items can I find here?

Advanced search options

Finding layer packages and other ArcGIS desktop content.

Related Searches

Find items published by Esri related to "Water"

Find groups related to "Water"

# Contacts and Questions?

For general inquiries:

[gmo@dhs.gov](mailto:gmo@dhs.gov)

For GII user access:

[HSIN.Helpdesk@dhs.gov](mailto:HSIN.Helpdesk@dhs.gov)

Telephone: (866) 430-0162 or  
(703) 674-3003

Request access to GIS  
community of interest (COI)

For GII secure token for  
Government system owners

[gmo@dhs.gov](mailto:gmo@dhs.gov)

## DHS Geospatial Services Geospatial Information Infrastructure (GII)



<https://gii.dhs.gov/>



<https://gii.dhs.gov/ServicesCatalog>



<https://gii.dhs.gov/oneview>



<https://gii.dhs.gov/BatchGeocode>