

Hippocrates

New Jersey's Health System Situational Awareness Application

ESRI

October, 2007



Jon S. Corzine
Governor



Fred M. Jacobs, M.D., J.D.
Commissioner

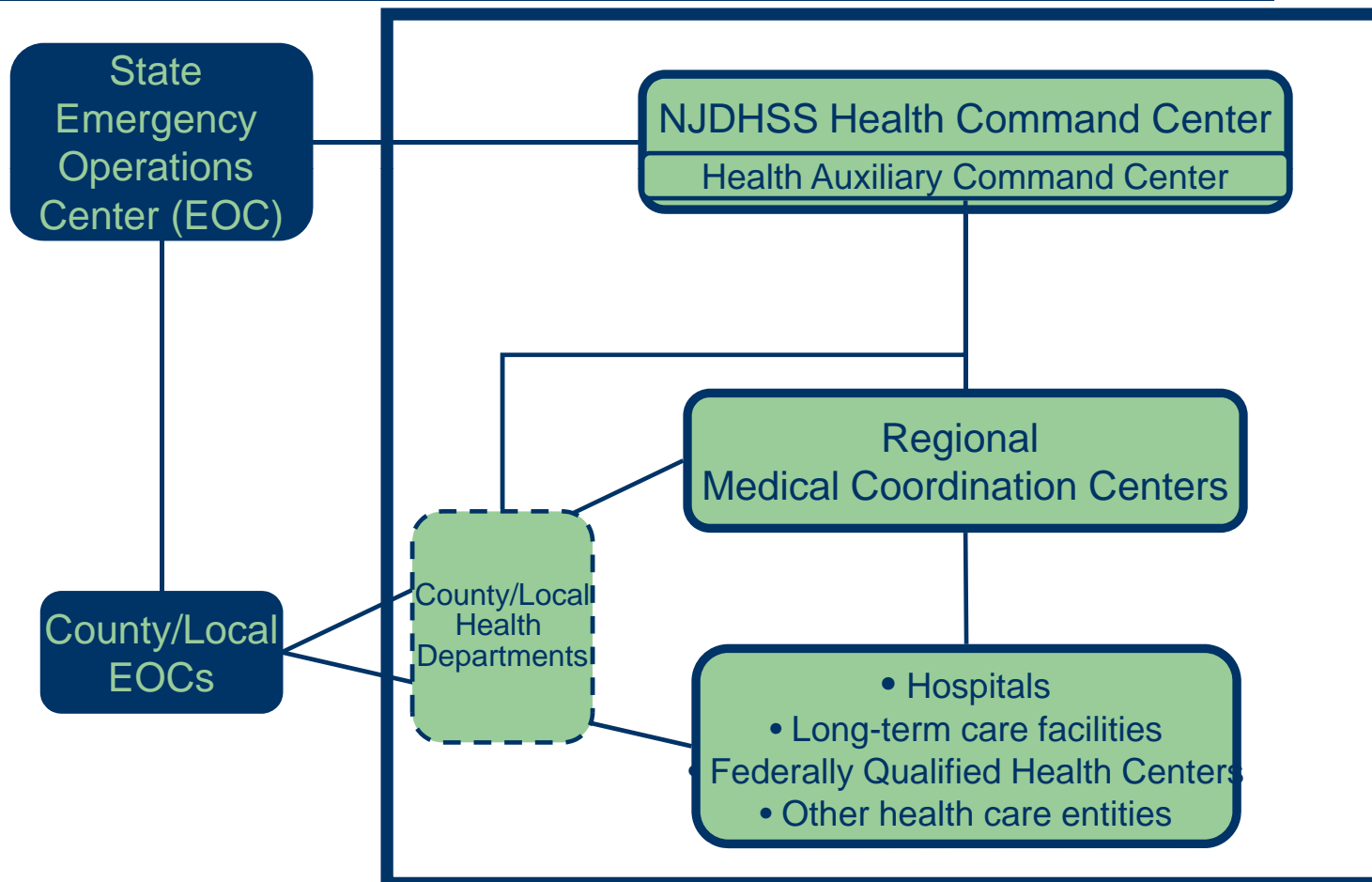


New Jersey's Health System



- 8.7 million people
- 566 municipalities
- 114 local health departments
- 21 counties
- 22 lead health agencies
- 5 planning regions
- 79 acute care hospitals
- 9 Medical Coordination Centers
- 1 Health Command Center

New Jersey's Health Response System



Application Development

- Initiated development in 2003
- Piloted during TOPOFF 3 in April 2005
 - Identified additional requirements
 - **Seamless integration** of additional health applications
 - **Increased map area**
 - **New functions** such as search
 - **Bi-directional** Email communication and document sharing
 - **Additional reporting** and summary statistics
 - New opportunities for **advanced analysis**
- Refined Version 1.0 requirements in Fall 2005
- User Acceptance Testing in Summer 2006
- Launched Version 1.0 in December 2006

Hippocrates Version 1.0

- **Connects** New Jersey's Health Response System
- Integrates and analyzes **real time and static health data**
- Maintains **situational awareness** before, during, and after natural and man-made emergencies
- Monitors **health system status** on a daily basis
- Supports **informed decision-making** during a health emergency
- **Customizes access** on an individual or group basis – users see only the information they need
- A **web-based application suite** developed and owned by the NJ Department of Health & Senior Services

Dynamic Data Integration



- Advanced and Basic Life Support
- Acute and Non-Acute Care Hospitals
- Points of Distribution
- Blood Banks
- RSS Medical Stockpile Locations
- Health Departments
- Hospitals from Surrounding States
- Long Term Care
- Command Centers

6

HEALTH LAYERS

HIPPOCRATES

- Post Offices
- Schools
- Roads
- Municipalities
- Counties
- Surrounding State Counties

BASE MAP LAYERS

- Incidents
- Events
- Weather/Traffic
- Medical Stockpile
- SitStat Surveys
- Hospital Divert Status
- Ambulance Locations

REAL-TIME FEEDS


Application Modules

- Command Center Console
- Healthcare System Resources
- Interactive Mapping
- Communication Channels
- Burn Center Module
- Poison Control Center Module

Command Center Console Features

- Incident and Event **tracking**
- Customized **email notification**
- Electronic **Shift Change Notes**
- Command Center **Sign In/Out**
- **Status** of statewide Command Centers
- Task assignments through **action items**
- **Log** of command center activities
- Canned and customized **reports**

Command Center Console




Hippocrates
HEALTH INFRASTRUCTURE PREPAREDNESS
AND EMERGENCY RESPONSE

WELCOME **REBECCA**

HOMELAND SECURITY ADVISORY SYSTEM Elevated

[SITE ADMIN](#) | [SEARCH](#) | [HELP](#) | [LINKS](#) | [CONTACT US](#) | [LOGOUT](#)



Command Center Console

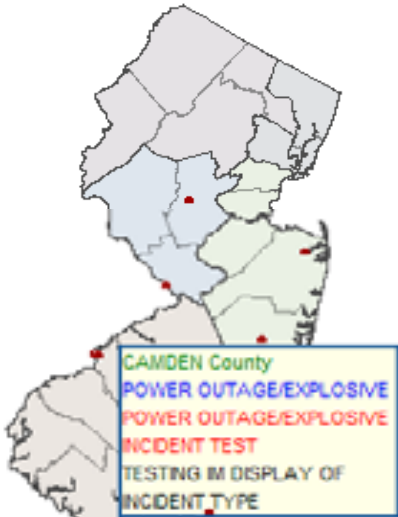
Healthcare System Resources | Medical Stockpile & Logistics | Medical Reserve Corps | Interactive Mapping | Communication Channels

[Incidents](#) | [Events](#) | [Logs](#) | [Action Items](#) | [Image / Video Gallery](#) | [Sign In/Out](#) | [Shift Notes](#) | [Reports](#)

Recent Log Entries

- SALEM HOSPITAL POWER FAILURE
COOPER UNIVERSITY HOSPITAL
08-21-2007 02:19:54
- TEST INCIDENT AUG 21 - 001
HEALTH COMMAND CENTER
08-21-2007 02:17:42
- TEST INCIDENT AUG 21 - 001
HEALTH COMMAND CENTER
08-21-2007 02:17:15
- SALEM HOSPITAL POWER FAILURE
COOPER UNIVERSITY HOSPITAL
08-21-2007 02:15:58
- TEST INCIDENT AUG 21 - 001
HEALTH COMMAND CENTER
08-21-2007 02:02:42
- TEST EMAIL NOTIFICATION
HEALTH COMMAND CENTER
08-21-2007 10:59:37
- CHEM INCIDENT TEST
COOPER UNIVERSITY HOSPITAL
08-02-2007 09:04:00
- CHEM INCIDENT TEST
COOPER UNIVERSITY HOSPITAL
08-02-2007 09:03:27
- CHEM INCIDENT TEST

Incidents



August 2007						
Sun	Mon	Tue	Wed	Thu	Fri	Sat
			01	02	03	04
05	06	07	08	09	10	11
12	13	14	15	16	17	18
19	20	21	22	23	24	25
26	27	28	29	30	31	

Signed-In Personnel

COOPER UNIVERSITY HOSPITAL

- MCC LIAISON - ROBERT SAUNDERS
- MCC LIAISON - RYAN MILLER

HEALTH AUXILIARY COMMAND CENTER

- EMS LIAISON - KENNETH BEYM
- HCC MANAGER - KEVIN HAYDEN

Shift Change Notes

HURRICANE LUCAS 15 AUG 1600 TO 16 AUG 0800

HEALTH COMMAND CENTER
DUTY OFFICER
07-30-2007 15:05:13
TEST



↑ ↓
■■■■■■■■
CHEM INCIDENT TEST[09:31:23 - 07/31/07]
◇ HURRICANE LUCAS (JERSEY CITY MEDICAL CENTER)

This system is restricted to authorized users. Copyright ©2006-2007 NJDHSS OITS. All rights reserved. [Release Notes](#)

Healthcare System Resources Features

- Medical facility **baseline information** including contacts, bed counts, medical supplies
- Hospital **diversion** status
- Canned and **dynamic** surveys
- Advanced survey **scheduling**
- **Customizable email** list for survey recipients
- **Multiple report types** for survey analysis

Healthcare System Resources

 **Hippocrates** | WELCOME REBECCA | HOMELAND SECURITY ADVISORY SYSTEM **Elevated** | [SITE ADMIN](#) | [SEARCH](#) | [HELP](#) | [LINKS](#) | [CONTACT US](#) | [LOGOUT](#) | 

HEALTH INFRASTRUCTURE PREPAREDNESS AND EMERGENCY RESPONSE

[Command Center Console](#) | **[Healthcare System Resources](#)** | [Medical Stockpile & Logistics](#) | [Medical Reserve Corps](#) | [Interactive Mapping](#) | [Communication Channels](#)

8:20:13 EDT 8/23/2007 | [Surveys](#) | [Medical Facility Information](#) | [Medical Facility Capabilities](#) | [Divert Status](#) | [Reports](#)

[View all Surveys](#) | [Create Survey](#) | [Find / Modify Survey](#) | [My Surveys](#)

Survey Title * | Survey Type *

Survey Jurisdiction * | Incident Name

Survey Notification List

Municipalities/Countries/Regions and Facilities:

Select All | DeSelect All | Select | De-Select

Selected Facilities:

Add Additional Contacts

Last Name | First Name | Email

Medical Facility: |

| |

Survey Questions

↑ ↓ ISTOWN MEMORIAL HOSPITAL][12:45:58 - 07/31/07] ◇ HURRICANE LUCAS (ROBERT WOOD JOHNSON UNIV

This system is restricted to authorized users. Copyright ©2006-2007 NJDHSS OITS. All rights reserved. [Release Notes](#)

Interactive Mapping Features

- Floating, transparent windows **maximize viewing** area
- Over 50 **data layers** w/ data from multiple state agencies
- **Dynamic data** layers, including:
 - Weather and traffic
 - Medical stockpiles
 - Hospital diversion
 - Incidents
- **Plume modeling**
- Static and dynamic **thumbnails**
- Add **custom locations**

Interactive Mapping

The screenshot displays the Hippocrates Interactive Mapping application interface. At the top left, the Hippocrates logo is shown with the text "HEALTH INFRASTRUCTURE PREPAREDNESS AND EMERGENCY RESPONSE". The user is logged in as REBECCA. The interface includes a navigation menu with options like "Command Center Console", "Healthcare System Resources", "Medical Stockpile & Logistics", "Medical Reserve Corps", "Interactive Mapping", and "Communication Channels". A toolbar with various map navigation icons is located below the menu. The main map area shows a map of New Jersey with several markers: a red dot for "All Incidents", purple stars for "HCC/MCCs", and blue 'H' icons for "Acute/General Hospitals". Specific locations labeled include "Test", "Brackman M.S.", "Southern Regional M.S.", and "Kes'sler". A legend on the left side lists these categories with their corresponding symbols. An "Overview Map" window in the bottom right shows a smaller map of the state with a red box highlighting the current view area. A "Thumbnails" panel on the right shows a series of map snapshots with timestamps. At the bottom, a status bar displays the time "[12:45:58 - 07/31/07]" and the event name "HURRICANE LUCAS (ATLANTIC CITY MEDICAL CENTER - CITY)".

↑ ↓) [12:45:58 - 07/31/07] ♦ HURRICANE LUCAS (ATLANTIC CITY MEDICAL CENTER - CITY) [12:45:58 - 07/31/07]

Communication Channels Features

- Quick, efficient, bi-directional **communication**
- **Share and disseminate** information including documents, images, sound and video files
- **Calendar display** of statewide and regional activities, including trainings, exercises and meetings
- **Image gallery** to post videos, documents, spreadsheets, etc.
- Lists users currently **online**
- Shows user **positions** in Command Center

Communication Channels

Hippocrates WELCOME REBECCA
HEALTH INFRASTRUCTURE PREPAREDNESS AND EMERGENCY RESPONSE
HOMELAND SECURITY ADVISORY SYSTEM **Elevated** SITE ADMIN | SEARCH | HELP | LINKS | CONTACT US | LOGOUT NJ DEPT OF HEALTH & SENIOR SERVICES

Command Center Console Healthcare System Resources Medical Stockpile & Logistics Medical Reserve Corps Interactive Mapping **Communication Channels**

15:37:16 EDT 8/21/2007 Create New Conversation Image/Video Gallery Chat/Users Online Surveys Send a File Calendar

List of Users Online

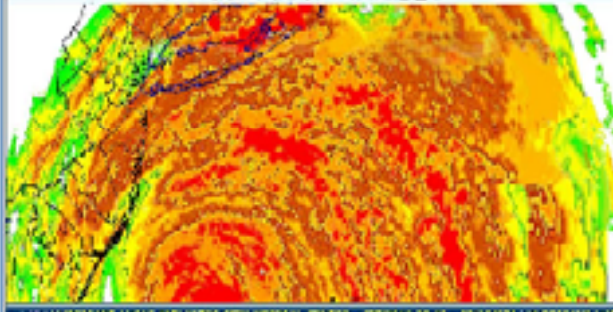
- ATUL VERMA
- Anbarasu Thirur
- Beth Jacob
- Carline Dixon
- David Gruber
- USER 2
- Victoria Roza
- Yong Lim

RWerbel's Conversation

SYSTEM::[03:34:20 EDT 08/21/2007]RWerbel's Conversation
SYSTEM::[03:34:27 EDT 08/21/2007]:DGruber has joined the conversation, say hi...
RWerbel:[03:35:59 EDT 08/21/2007]:Hi, Dave. What is the activation level of the HCC?
DGruber:[03:36:21 EDT 08/21/2007]:Level 1, but considering elevating to Level 2
DGruber:[03:36:28 EDT 08/21/2007]:Will have a decision shortly
RWerbel:[03:36:49 EDT 08/21/2007]:Thanks. will there be addl activations of the MCCs?
DGruber:[03:37:08 EDT 08/21/2007]:yes, southern mcc activated at Level 2

Send a File Invite User(s) to Conversation Send Email

Image Gallery



061005 1001 EST WEATHER MAP
Last Updated date 07-02-2007 15:18:44
Last updated by BJacob
Incident Name HURRICANE LUCAS

How to Send a File? Instruction to Send a More instruction to Se
How to Send a Email? Instruction to Send a More instruction to Se
How to invite user(s) to Instruction to invite a More instruction to inv

↑ ↓ 1/07] ◇ HURRICANE LUCAS (HEALTH COMMAND CENTER)[12:45:58 - 07/31/07] ◇ 4.8% of Hospitals are on co

This system is restricted to authorized users. Copyright ©2006-2007 NJDHSS OITS. All rights reserved. [Release Notes](#)

Version 1.0 Rollout

- User Acceptance Testing
- User Groups & Privileges
- Training Program
 - Materials
 - Tailored trainings
- Phased Production Launch
- Help Desk Support

Hippocrates Users

- NJ Department of Health & Senior Services
 - State Health Command Center (HCC)
 - Regional Medical Coordination Centers (MCCs)
- Acute Care Facilities & Healthcare Systems
- LINCS Agencies (County/City Health Departments)
- NJ State Police (e.g. State Emergency Operations Ctr)
- Federal agencies (e.g. USDHHS Region II)
- External partners (e.g. New Jersey Hospital Association)

Warren Grove Forest Fire – May 2007

The screenshot displays the Hippocrates Command Center Console interface, which is used for managing healthcare system incidents. The interface is divided into several sections:

- Header:** Includes the Hippocrates logo, user information (WELCOME REBECCA), and system status (Elevated). Navigation links for Site Admin, Contact Us, Links, Help, Search, and Logout are present.
- Navigation:** A menu bar contains options like "Command Center Console", "Healthcare System Resources", "Medical Stockpile & Logistics", "Interactive Mapping", and "Communication Channels".
- Incident Details (Left Panel):**
 - Incident Type:** GENERAL
 - Incident Title:** WARREN GROVE FOREST FIRE (A)
 - Incident Description:** FROM JM KELLY, MCC COORDINATOR: BOTH SOUTHERN OCEAN COUNTY HOSPITAL AND ATLANTICARE, MAINLAND DIVISION WERE CONTACTED AND NEITHER HAS BEEN AFFECTED
 - Incident Status:** CLOSEOUT
 - Location:** ATLANTIC CITY MEDICAL CENTER - CITY - NJ
- Map (Right Panel):** An interactive map showing the geographic area around Atlantic City, New Jersey. The map includes a legend, navigation tools, and a status bar at the bottom indicating "3.0% of Hospitals are on complete divert [13:23:00 - 05/16/07]". Specific locations like "Brackman M.S." and "Southern Regional H.S." are marked on the map.
- Footer:** A copyright notice for NJOHHS OITS is visible at the bottom of the interface.

Contact Information

New Jersey Department of Health & Senior Services
Division of Health Infrastructure Preparedness
& Emergency Response

Rebecca Werbel
Director of Policy
rebecca.werbel@doh.state.nj.us