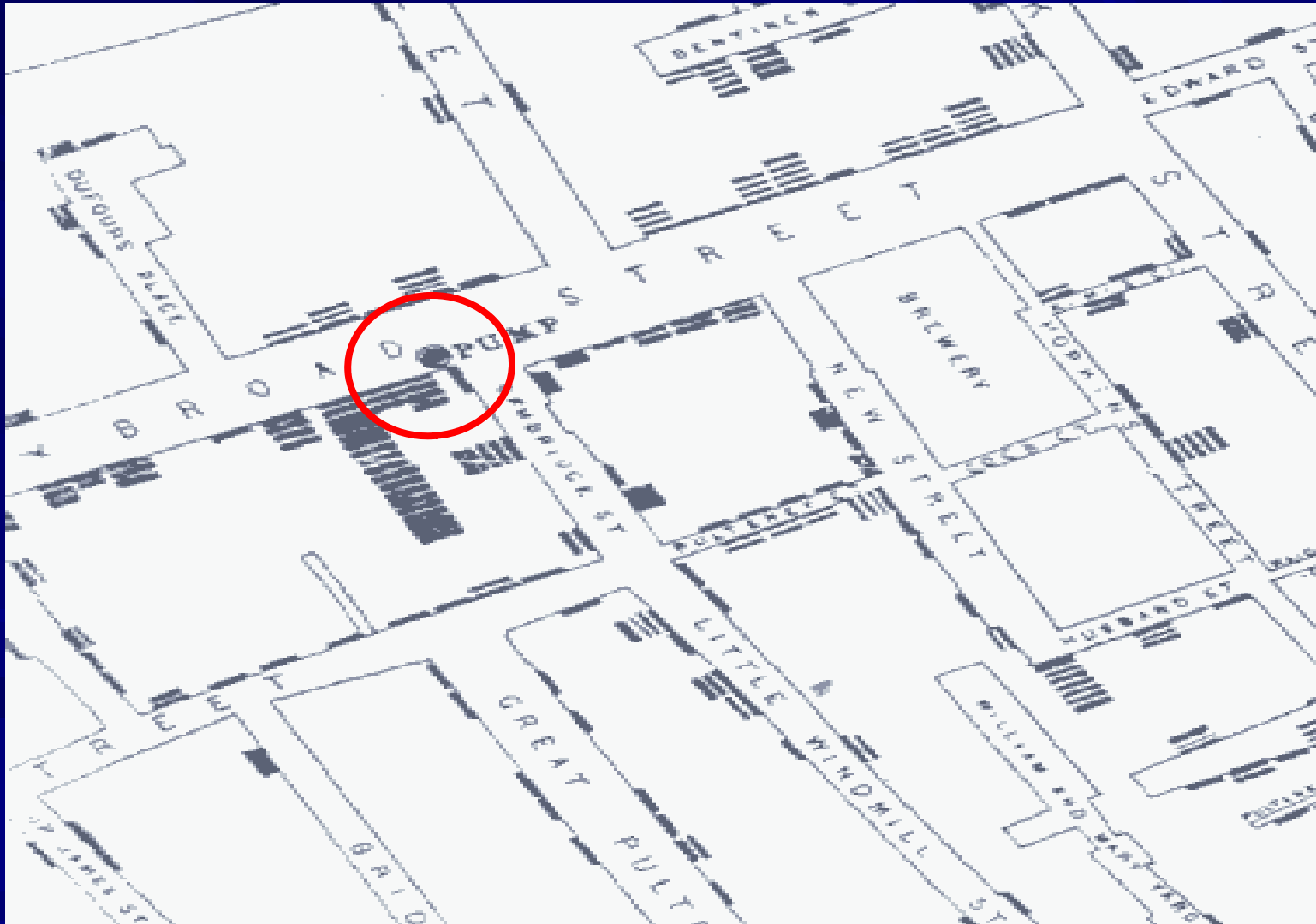


Using GIS to Streamline Public Health Response

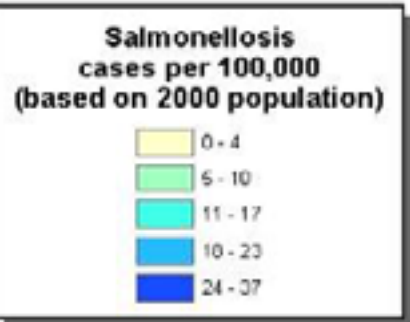
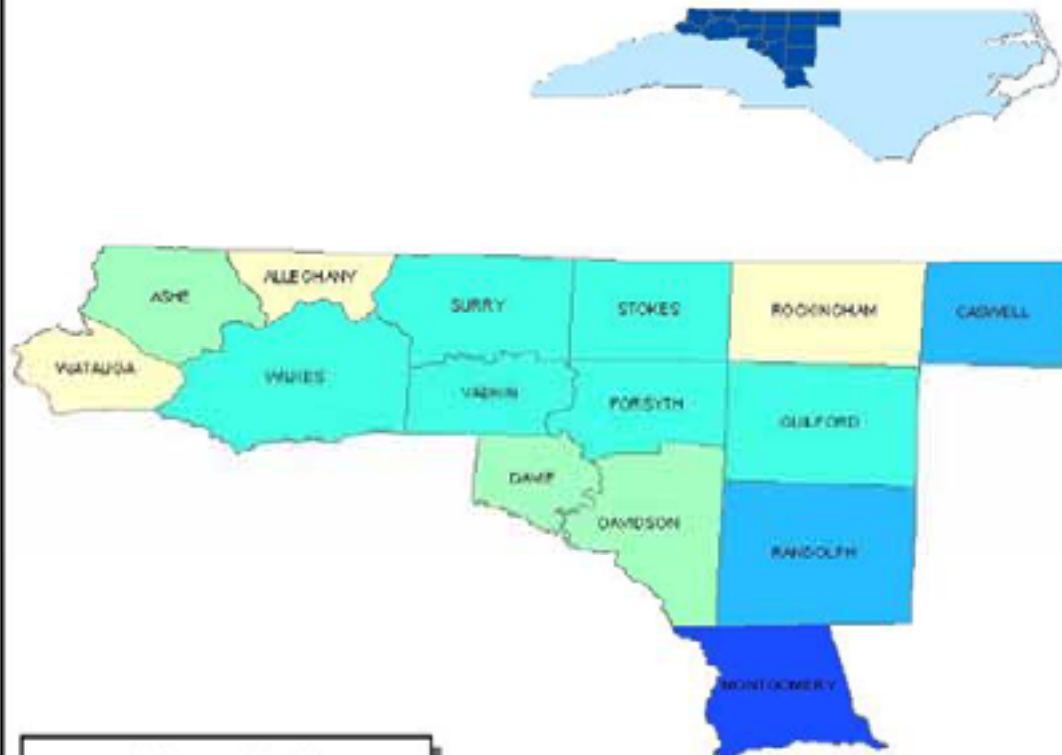
Presented by:
Steven Ramsey, RS



GIS and Epi Response



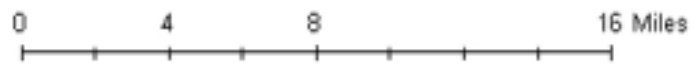
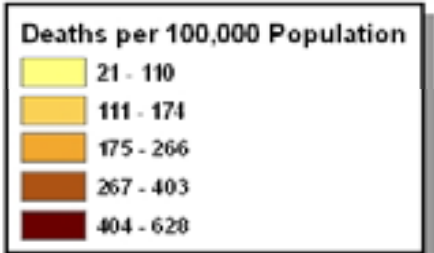
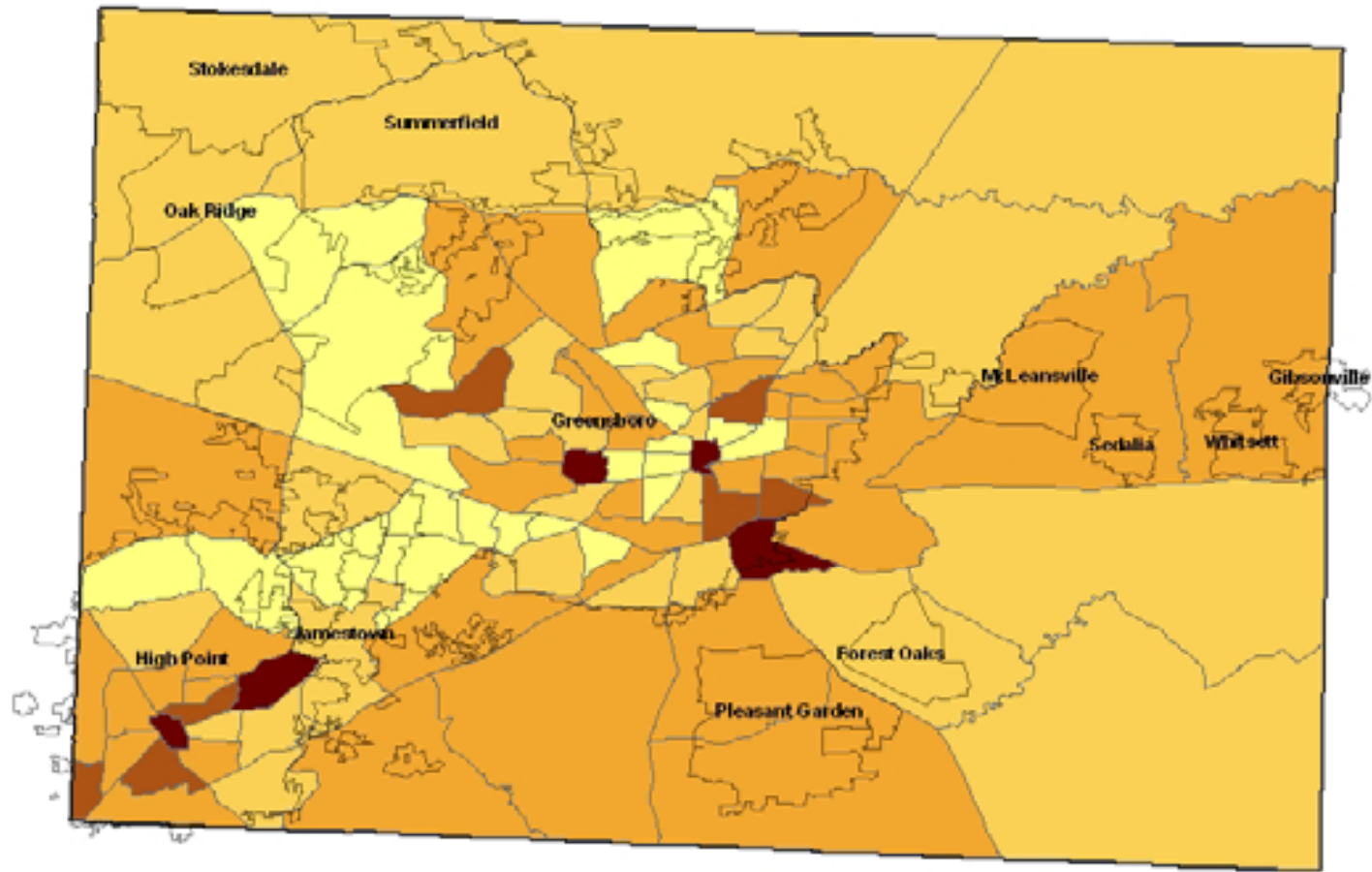
Salmonellosis Cases in PHRST-5 Region 2003



Source: Office of Infectious Disease Epidemiology,
NC Division of Public Health



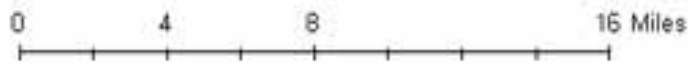
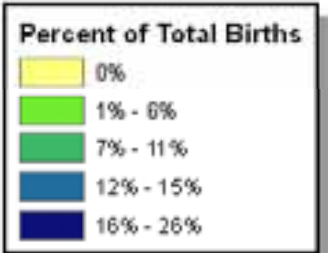
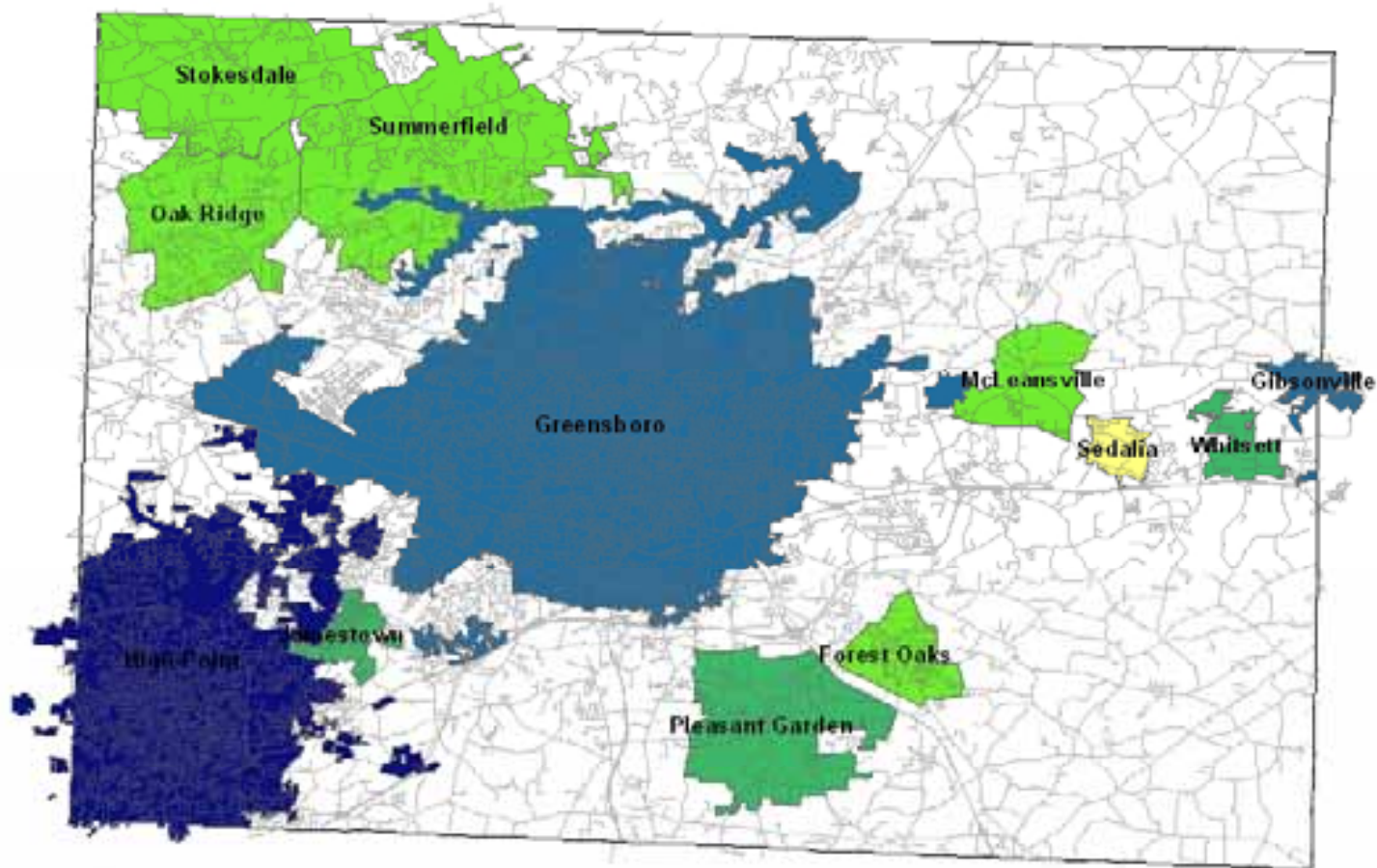
Heart Disease Mortality Rates by Census Tract Guilford County, NC 2002-2006



Source: US Census Bureau, 2000; NC State Center for Health Statistics, NC Mortality Files, 2002-2006



Percent Late or No Prenatal Care by Municipalities Guilford County, NC 2002-2006

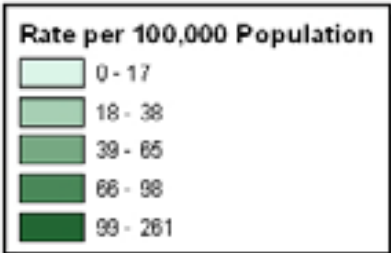
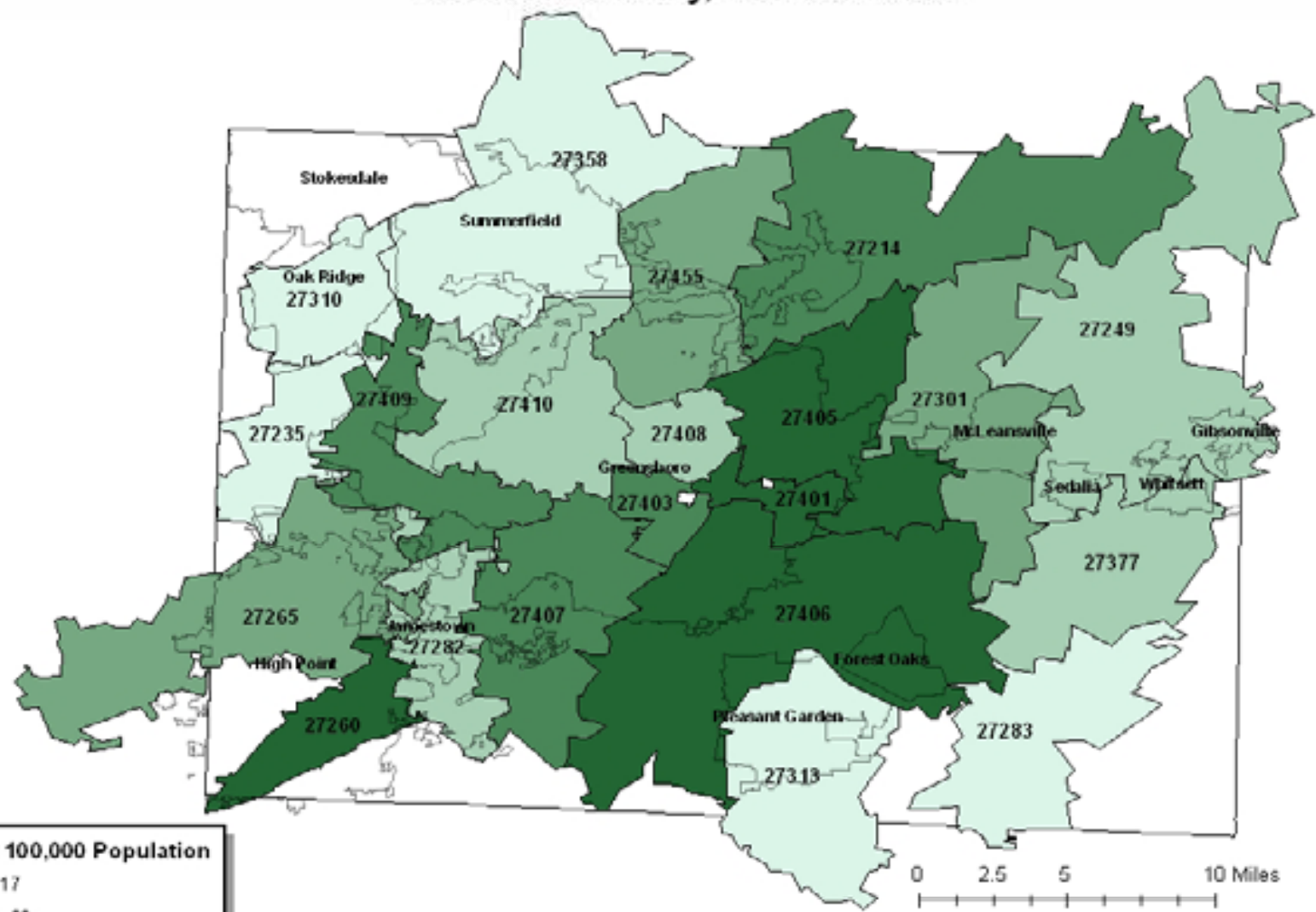


Note: Late prenatal care refers to prenatal care initiated after the first trimester (first three months) of pregnancy.

Source: NC State Center for Health Statistics, NC Birth Files, 2002-2006



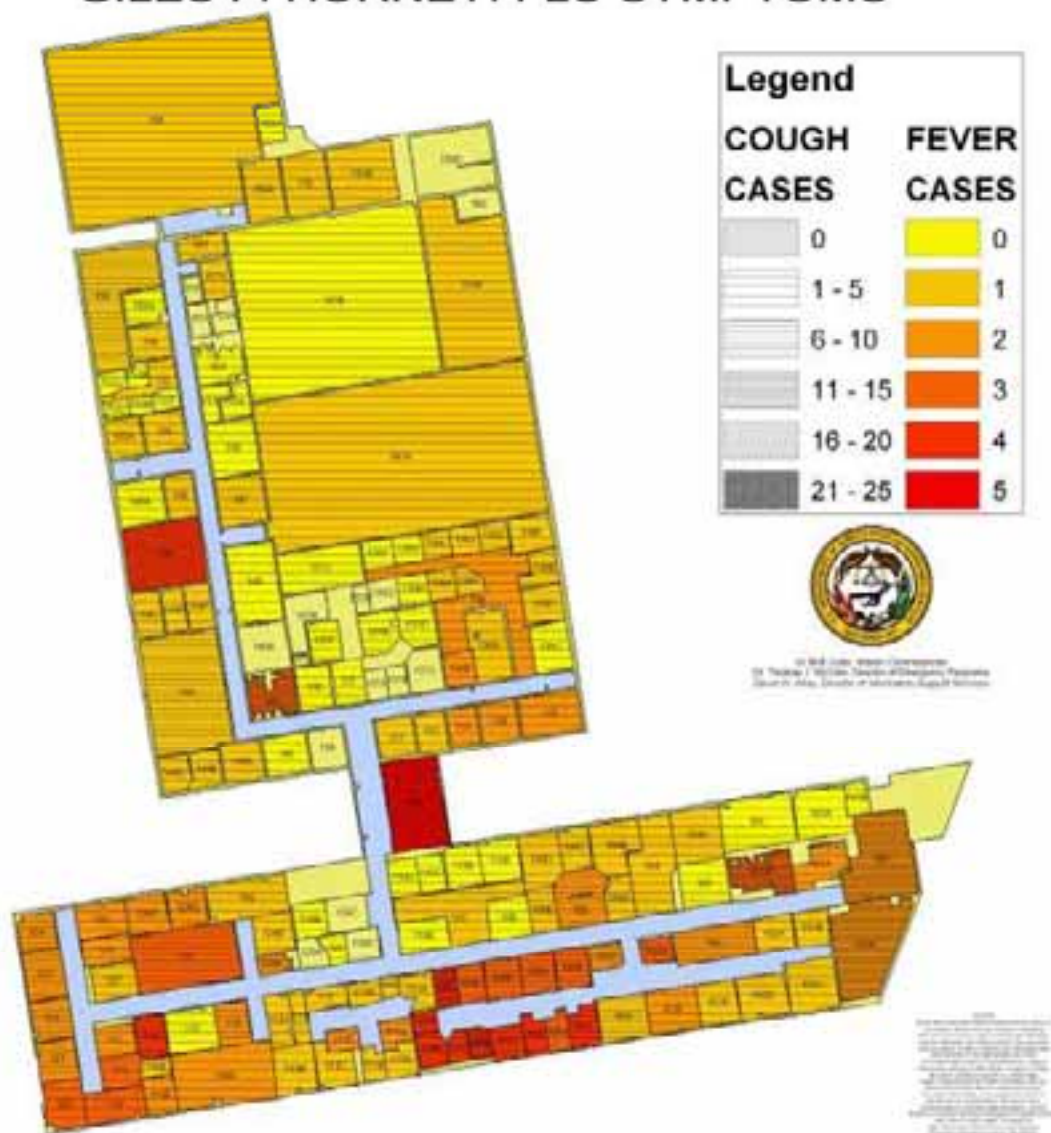
Gonorrhea Rates by Major Zip Codes Guilford County, NC 2003-2007



Source: US Census Bureau, 2000; NC State Center for Health Statistics, STD File, 2007

SARS Mapping

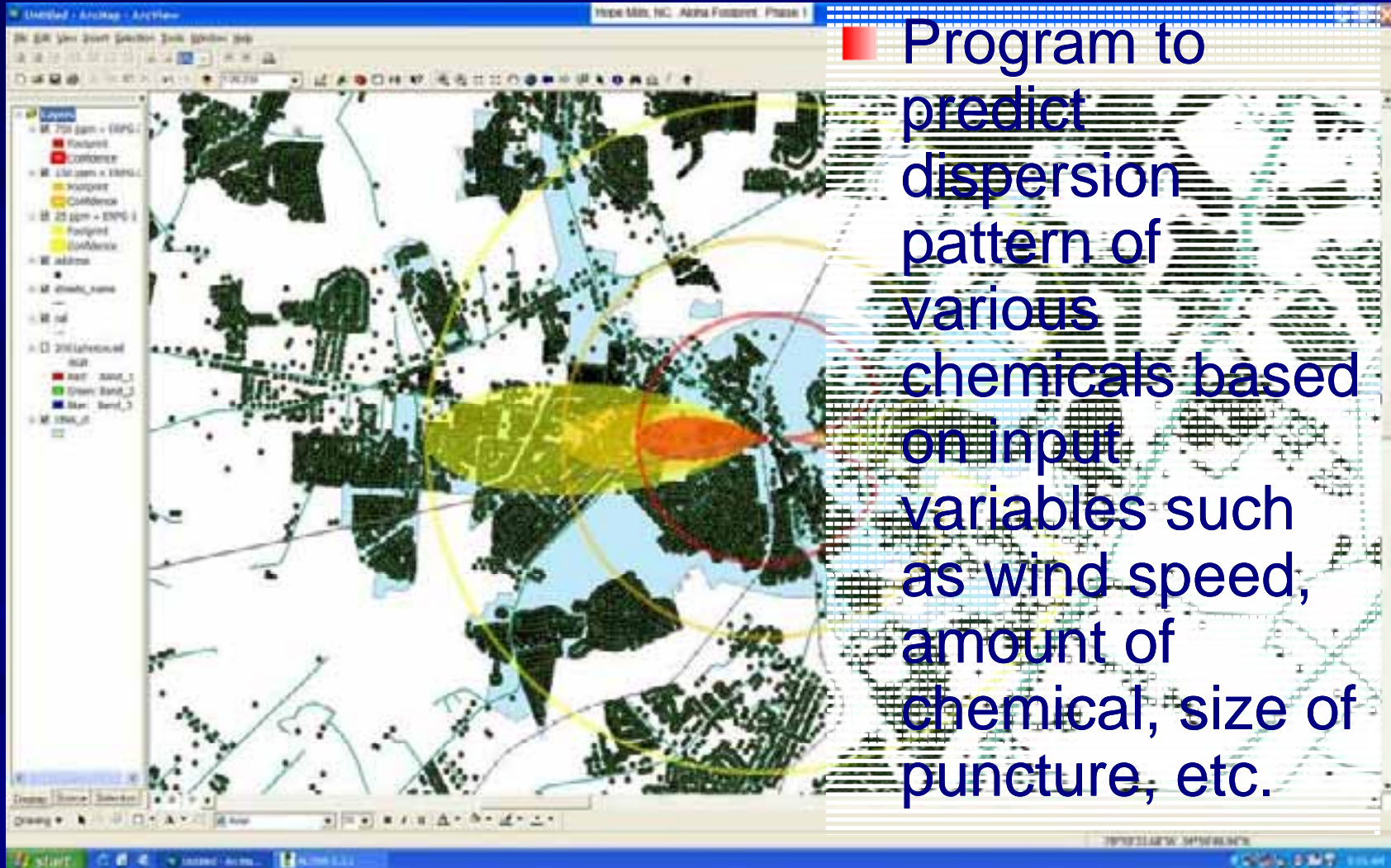
GILES F. HORNEY: FLU SYMPTOMS



Communicable Disease Field Investigation with Mobile GIS

- GPS can be used for location finding, data collection, and navigation
- Customized user-friendly data collection forms
- Eliminate paper forms and double data entry, reduce errors, speed response
- Centralized data with geographic distributions

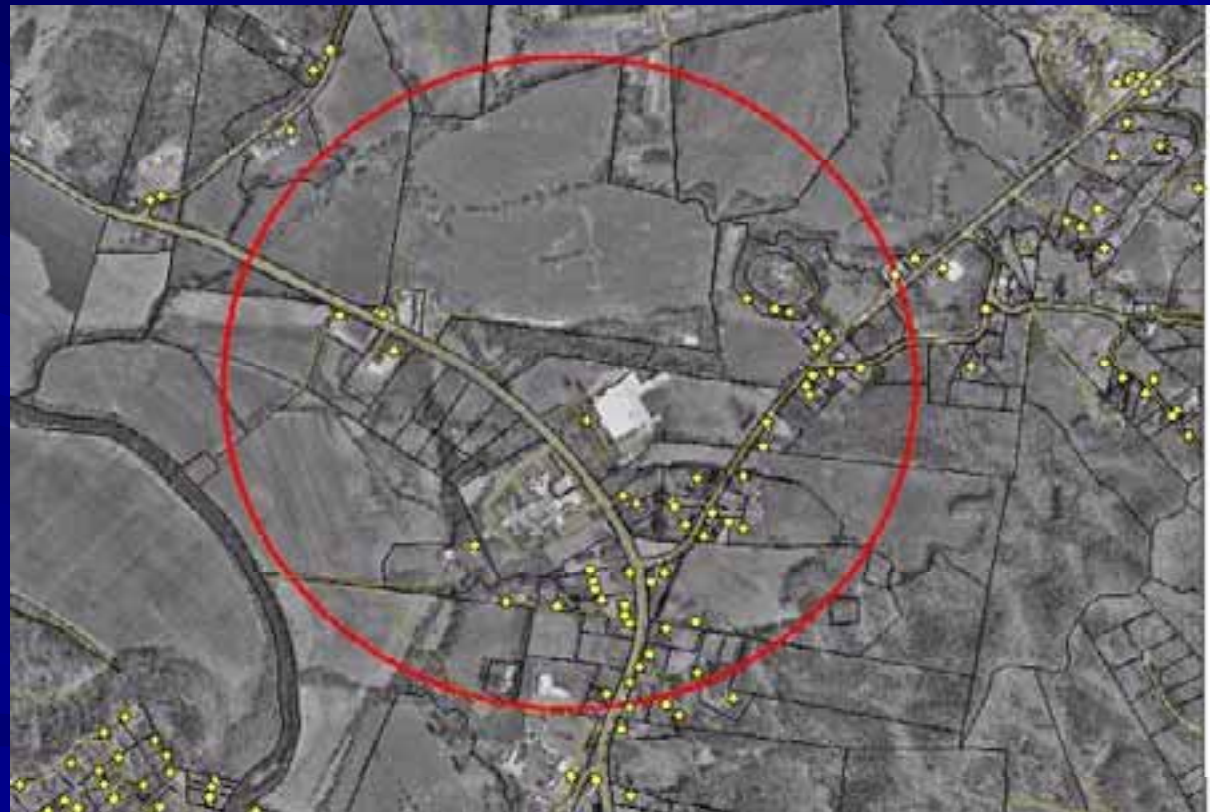
Modeling in GIS



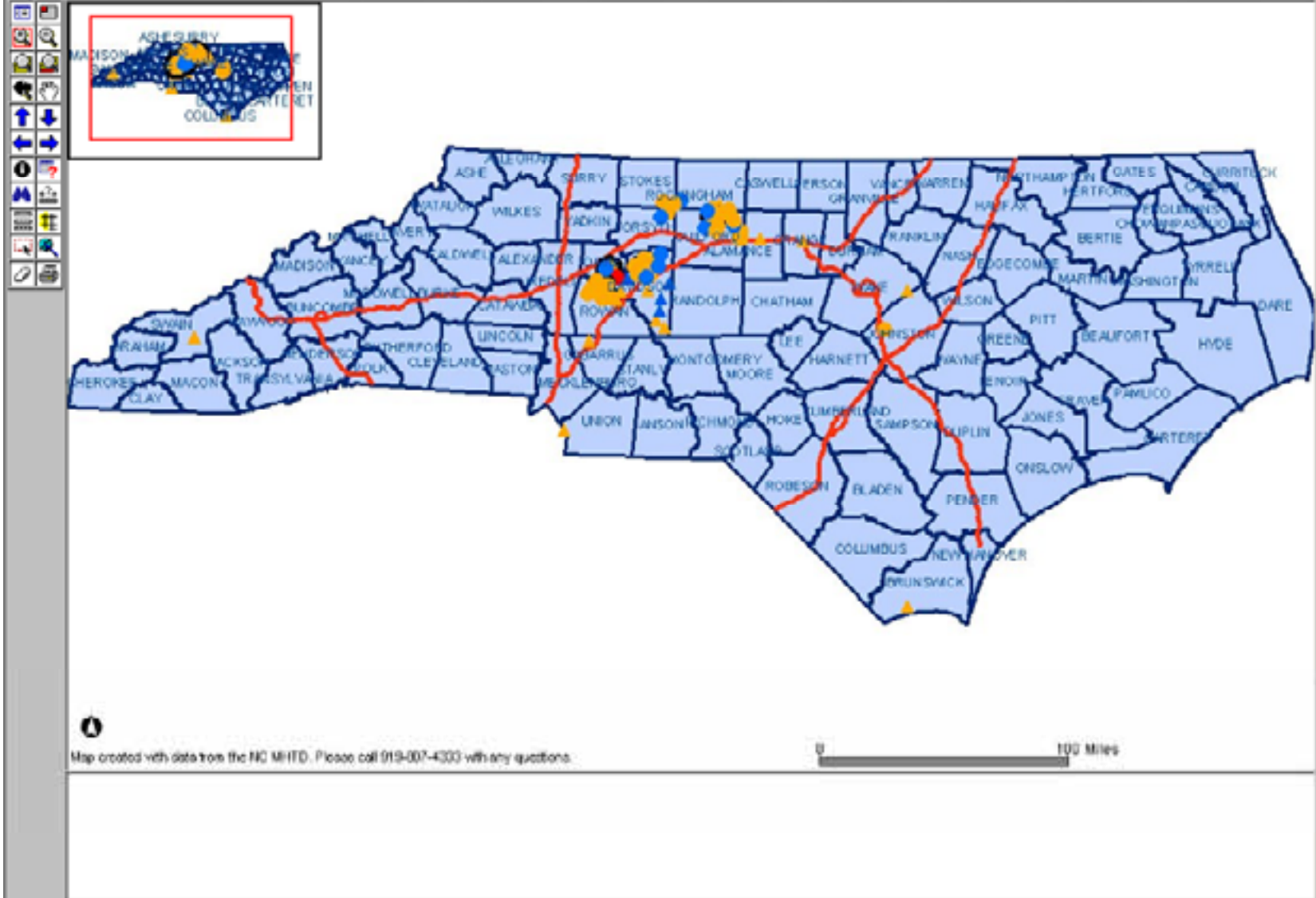
Program to predict dispersion pattern of various chemicals based on input variables such as wind speed, amount of chemical, size of puncture, etc.

Western NC Legionellosis Outbreak Investigation

- Infectious disease investigation
- Community canvassing/case finding



Public Health Plague Viewer



Layers

PLAGUE CASES

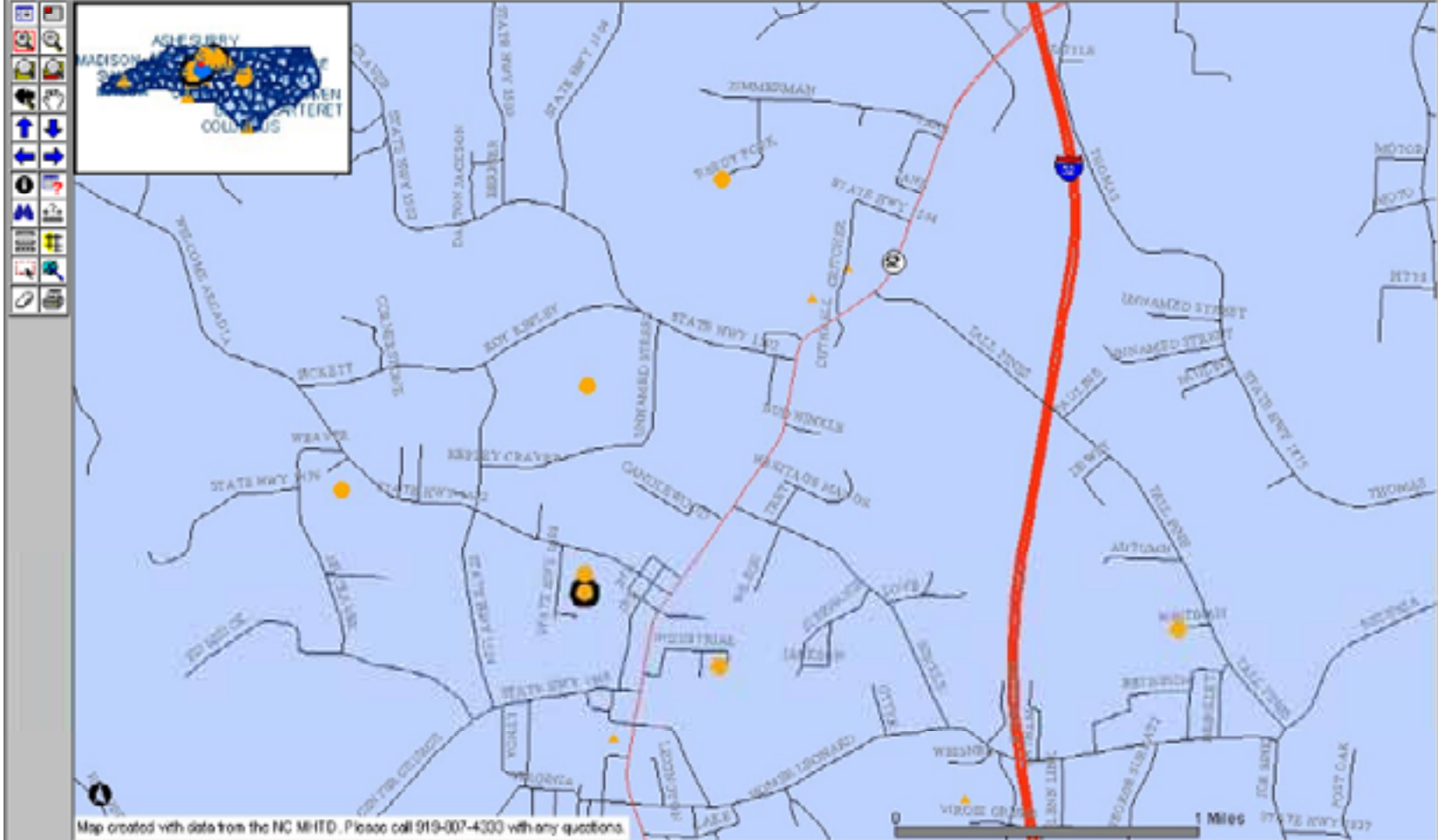
- HUMAN
- ANIMAL CASES
- INTERSTATES
- HOSPITALS
- HOTELS
- RESTAURANTS
- CITIES
- COUNTY

Retresh Map

Human=Circles Animal =Triangles

- confirmed
- confirmed - dead
- suspected
- suspected - dead
- probable
- probable - dead
- exposed
- none
- none - dead

Public Health Plague Viewer



Layers

HUMAN AREA

- PLAGUE CASES HUMAN
- ANIMAL CASES
- ROADS
- SCHOOLS
- HOSPITALS
- HOTELS
- RESTAURANTS
- CITIES
- COUNTY

Refresh Map

Human=Circles
Animal =Triangles

- confirmed
- confirmed - dead
- suspected
- suspected - dead
- probable
- probable - dead
- exposed
- none
- none - dead

Map created with data from the NC MHTD. Please call 919-007-4300 with any questions.

PLAGUE CASES HUMAN

Rec	tblKey	entrydate	Clms	interviewer	interviewphone	interviewdate	interviewtime	classification	patentfirstname	patientlastname	patientaddress	latitude	longitude	patientcity	patient
1	80	Thu, 23 Oct 2003 10:28:21	ws00080H1	Eric J. Ireland, RS		Thu, 23 Oct 2003 00:00:00	9:04:30 AM	suspected	Park	Ornzaga	624 Western Ave	36.9007	-80.252	Wewona	2737

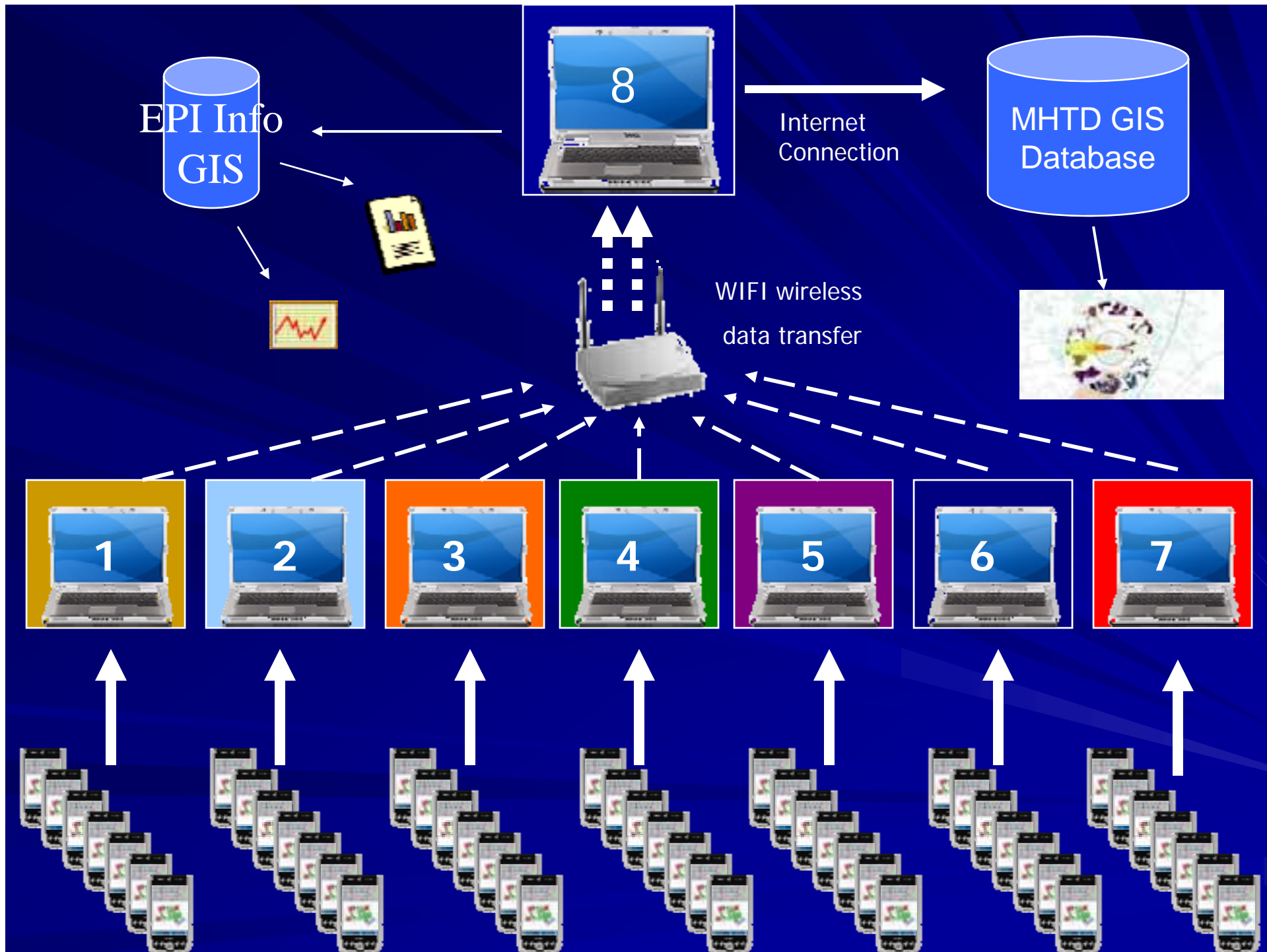
NC Office of Public Health Preparedness and Response

North Carolina Public Health
PREPAREDNESS & RESPONSE

PHP & R



Public Health Regional
Surveillance Teams (PHRST)



Rapid Response Project 516

- Mobile GIS and Electronic Data Capture project





Public Health Disaster Epidemiology

- Injury and Illness Surveillance
- Mortality Surveillance
- *Community Surveillance*
 - Information for Public Health emergencies
 - Response
 - Recovery
 - *Mitigation*

Community Assessment for Public Health Emergency Response (CASPER)

- Population (Census) Based Random Sample
 - modified from WHO EPI (Expanded Programme on Immunization)
- Household Interviews to Determine Human Needs and Impact
- Conducted and Reported Rapidly to Guide Response Efforts
 - <72 hours post-event
- Target Audience:
 - Public Health, Emergency Management

CASPER

- Identify needs and impact by Population Proportion
- Define the magnitude of the need
 - population estimates using census data
- Characterize Need
 - most needs are known (water, electricity)
 - some may be unanticipated (food, use of generators)
- May be conducted in series
 - Recovery
 - After Action

Historical Approach

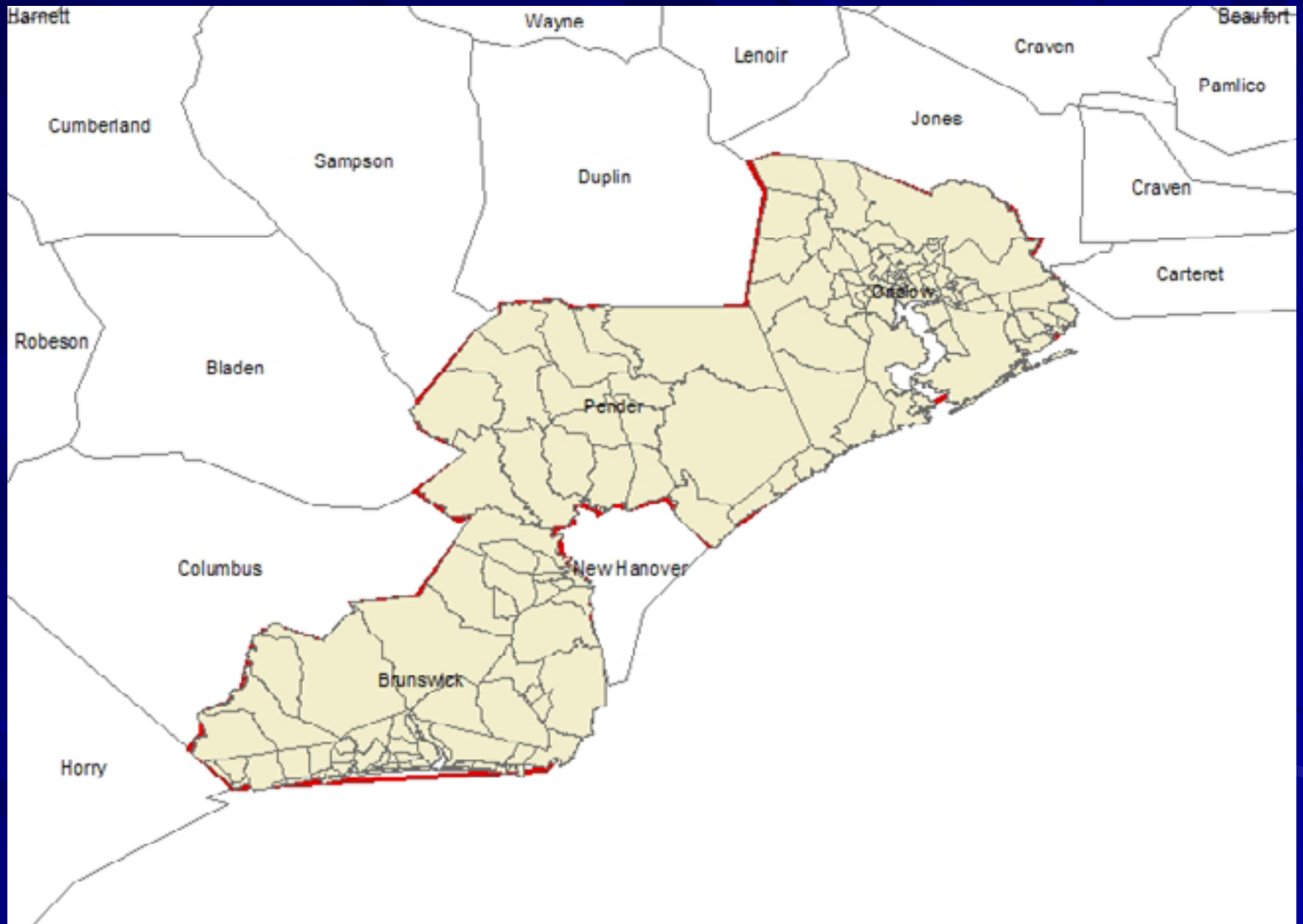


Historical Approach

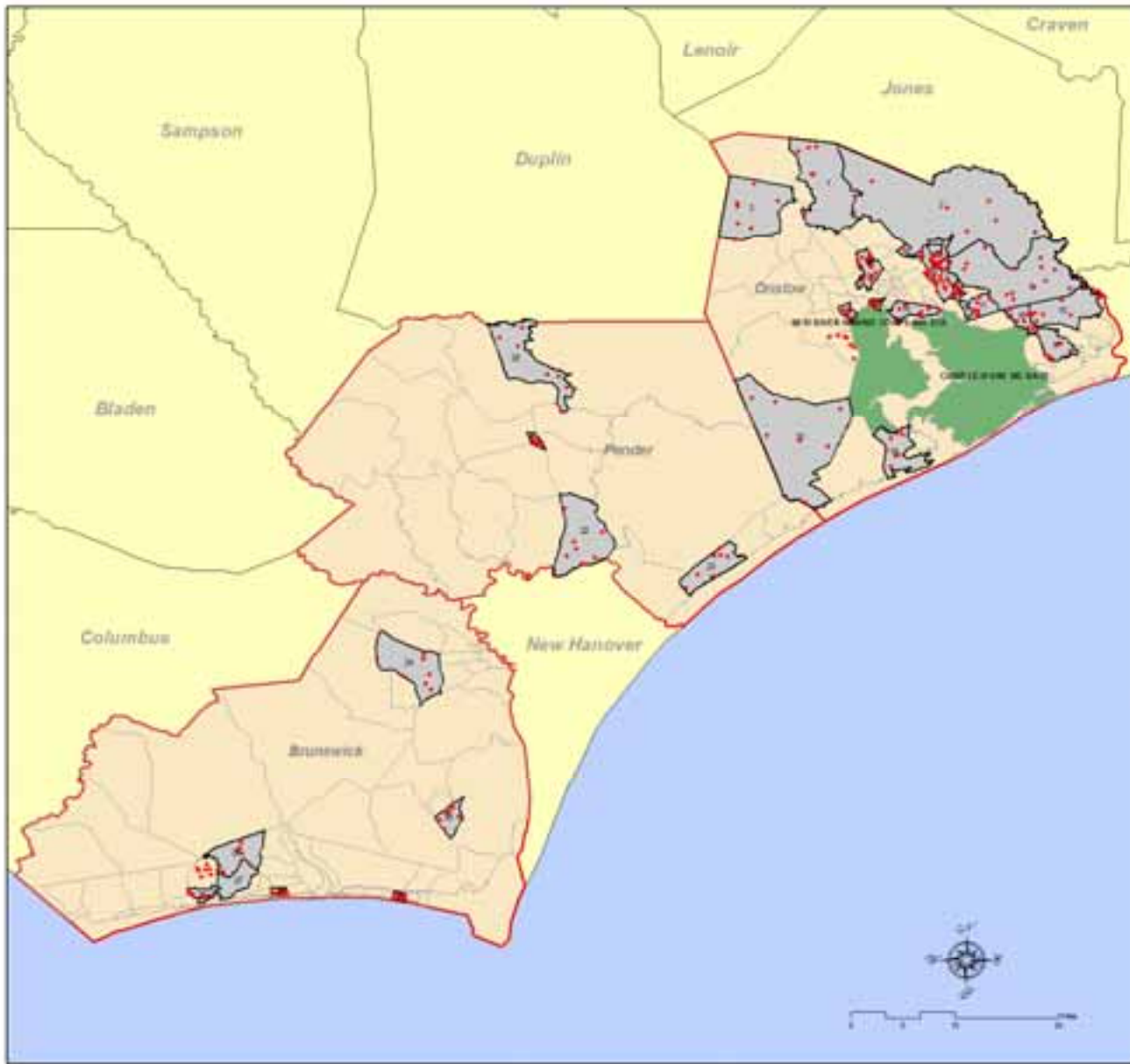


CASPER Sample

- Randomly select 30 population weighted census blocks (clusters) from all of the census blocks in the assessment area
- 7 geographically random points generated per census block
- Teams navigate to the point
- Conduct interviews at 7 households within the census block (210 total)
- Questionnaire administered and data collected



Hurricane Charley Rapid Needs Assessment



This map illustrates the Hurricane Charley assessment area. The RNA survey sample methodology involves a two-stage randomization process. Gray-shaded polygons represent first-stage randomly-selected census block-groups. The red dots show the location of household interview sites selected using a random point-in-polygon script in the second-stage randomization procedure.

Interviews were conducted to assess the magnitude of needs in the assessment area relating to health, housing and utilities.



Hurricane Charley Community Health and Needs Assessment

Date of report: 8/17/04

Time of report: 0900

Summary

A human health and needs assessment was conducted in Brunswick, Onslow and Pender counties by the North Carolina Division of Public Health as part of the state's response to Hurricane Charley. Individuals residing in 203 randomly selected households were interviewed on August 16, 2004 to estimate the condition and needs of the population in the three counties.

Data collected from this assessment indicate that the human health and needs were not significantly impacted in these three counties by this hurricane. For example, on the date of the survey:

- An estimated 1.4 % of households (or 1,325 households) were without power. The 95% confidence interval (95% CI) was 0% to 3.2%.
- 6% of occupied households were damaged but habitable (5,677 households). No respondents reported that the residence was damaged but uninhabitable.
- An estimated 2.5 % (95% CI 0.2% to 4.8%) of homes were flooded with 1 inch to 12 inches of floodwater in the dwelling.
- Hurricane related injuries were reported in 0.6% of households (95% CI 0 to 1.5%).
- Less than 1% of households reported that the hurricane was preventing an occupant from obtaining medical care.
- Less than 2% of households or 1,325 households projected (95% CI 0 to 2,838) were using bottled water.
- Less than 3% of households or 2,555 households projected (95% CI 0 to 5,014) reported being without access to a 3 day supply of food.

Recommendations

Survey results and field reports indicate that the hurricane's impact on public health in the three-county assessment area is not widespread. These recommendations are offered to address on-going recovery efforts:

- Provide outreach information to the public to address clean up of flooded homes, and the safe operation of portable generators to prevent fires, electrocution and carbon monoxide poisoning.

Table 1. Results of a Community Health and Needs Assessment Following Hurricane Charley. Brunswick, Pender, and Onslow Counties, North Carolina, 2004

	Household (%)	95% CI	Households Projected* (n)	95% CI
Damage to home				
External damage due to hurricane				
<i>None or minimal</i>	94.3	89.8-98.8	89,221	84,963-93,479
<i>Damaged, but habitable</i>	5.7	1.2-10.1	5,393	1,135-9,556
<i>Damaged, but uninhabitable</i>	0		0	
Flood water in home due to hurricane				
<i>None</i>	97.5	95.2-99.8	92,249	90,072-94,425-
<i>1 to 12 inches</i>	2.5	0.2-4.8	2,365	189-4,541
<i>13-36 inches</i>	0			
<i>>3 feet</i>	0			
<i>Flooding, but unknown level</i>	0			
Household utilities				
No running water	0.4	0-1.2	378	0-1,135
No electricity	1.4	0-3.2	1,325	0-3,028
No working telephone	3.1	0.3-5.9	2,933	284-5,582
No battery operated radio	21.4	-	20,247	-
Generator used following hurricane	9.4	3.6-15.3	8,894	3,406-14,476
Hurricane-related illness and injury				
Injury in household due to hurricane	0.6	0-1.5	568	0-1,419-
Illness in household since hurricane	2.2	0.1-4.2	20,815	94.6-3,974
Experiencing stress due to hurricane	6.6	3.1-10.1	6,244	2,933-9,556
Requiring medical care	4.2	0.5-7.8	3,974	473-7,380
Problems obtaining medical care	0.5	0-1.5	473	0-1,419
Problems obtaining medication	0.7	0-1.8	662	0-1,703
Food and water				
Current source of drinking water				
<i>Well</i>	23.8	11.2-36.4	22,518	10,597-34,439
<i>Public</i>	73.7	60.3-87.1	69,731	57,052-82,409
<i>Bottled</i>	1.4	0-3.0	1,325	0-2,838
Households without access to a 3-day food supply	2.7	0-5.3	2555	0-5,014

Community Assessment for Public Health Emergency Response (CASPER)

■ Limitations

- Access to assessment areas
- Unoccupied households
- Confidence intervals
 - Estimates
- Some data may be available for other sources
 - Utilities, etc
- Users must be prepared to receive assessment information

Community Health and Needs Assessment

■ Strengths

- Objective, representative data from a large population
- Generated very quickly (72 hours)
- Population proportion
 - Estimated percentage of households
- Population magnitude
 - Estimated number of households

NC DPH

CASPER Experience

- Hurricane Isabel, Charley (NC)
- Hurricane Wilma (FL)
- Hurricane Katrina AAR (MS)
- Iowa Floods 2008
- Carteret County Prehurricane Assessment (NC)
- 19 LHD CHA's

Types of Survey Instruments

Convenience vs. Random

- Paper-based/Self-administered surveys
- Telephone surveys
- Web-based surveys
- Face-to-Face interviews

Comparison of CHA Sample and Census Demographics

CHA County	% White	% White Census	% Black	% Black Census	% Male	% Male Census	% Female	% Female Census	% Over 65	% Over 65 Census
Ashe	97.1	97.2	0.7	0.7	33.3	49.3	66.7	50.9	34.3	18
Alleghany	96	95.7	0	1.2	32	49.3	68	50.7	37	19.2
Watauga	97.4	96.5	1	1.6	44.8	49.8	55.2	50.2	25.3	11
Davidson	82.9	87.1	11.6	8.6	39.2	48.7	60.8	51.3	31.5	13
Caldwell	88.6	89.3	5.9	4.2	40.3	49.2	59.7	50.8	35.8	14.1
Pitt	69	60.8	28.1	33.7	38.6	47.8	61.4	52.2	20.8	9.9
Davie	88.4	90.4	5.8	6.8	32.7	49.2	67.3	50.8	35.3	13.8
Surry	90.4	94.6	4.2	2.9	46.9	39.5	51.1	60.5	35.6	15.4
Yadkin	92.5	92.5	3.4	5	49.1	35.9	50.9	64.1	34.2	14.2
Rockingham	70.6	75.6	24.6	19.2	35.5	48.9	64	51.1	30.3	14.8
Average % Point Difference		0.68		-0.14		7.32		-7.25		-17.7

Preparedness in CHA

■ Survey instrument

- Household plans and preparedness?
- Communication/contact plan?
- Food/water/fuel?
- Awareness
 - Generator use, food safety, water safety, driving

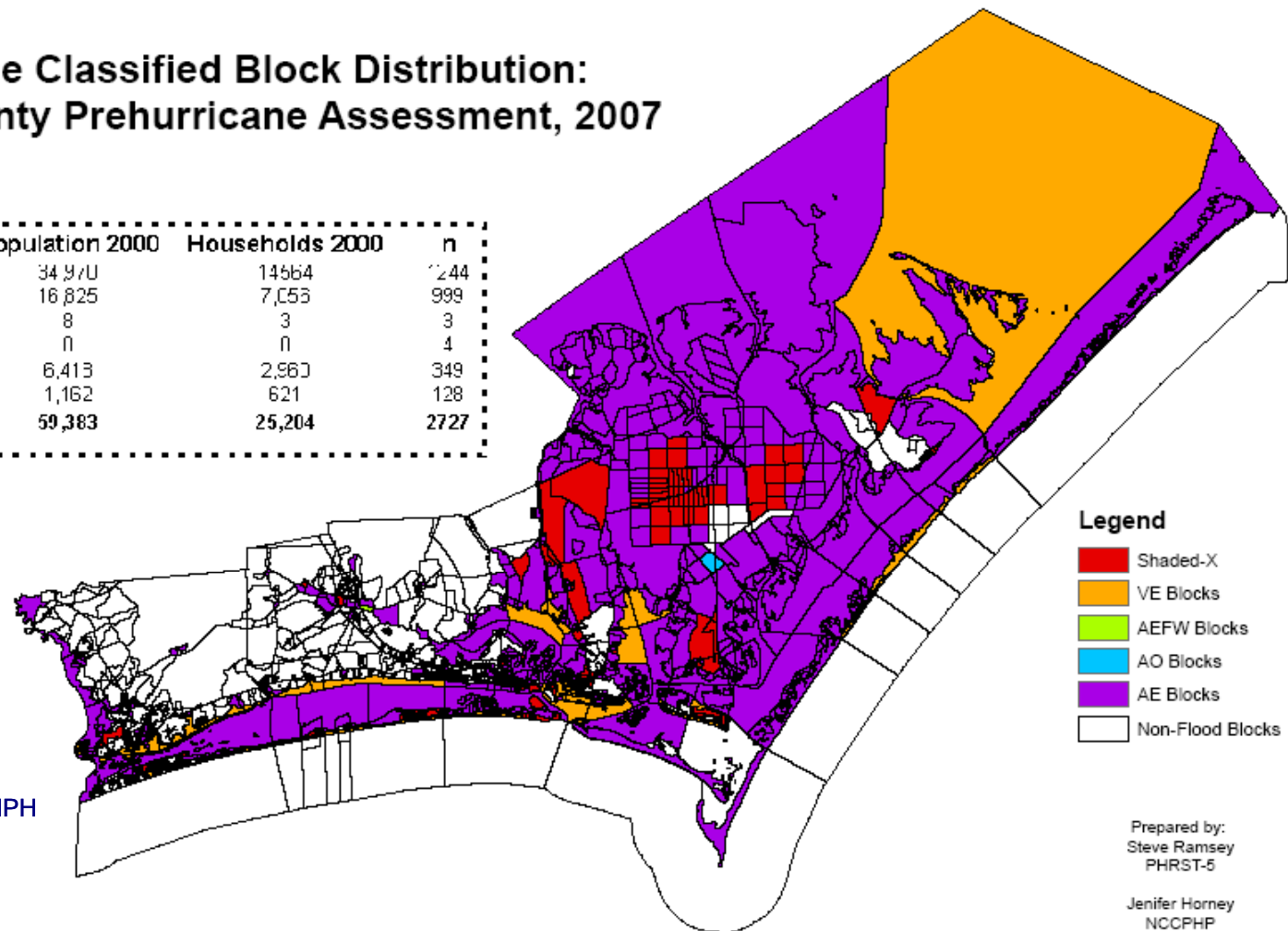
■ Using the data

- Messages
- Communication methods

Factors Associated with Hurricane Preparedness: Results of a Pre-Hurricane Assessment

**Floodzone Classified Block Distribution:
Carteret County Prehurricane Assessment, 2007**

Area of Interest	Population 2000	Households 2000	n
Non-flooded Blocks	34,970	14,664	1,244
AE Blocks	16,825	7,053	999
AEFW Blocks	8	3	3
AO Blocks	0	0	4
Shaded-X Blocks	6,413	2,960	349
VE Blocks	1,162	621	128
Totals	59,383	25,204	2,727



Legend

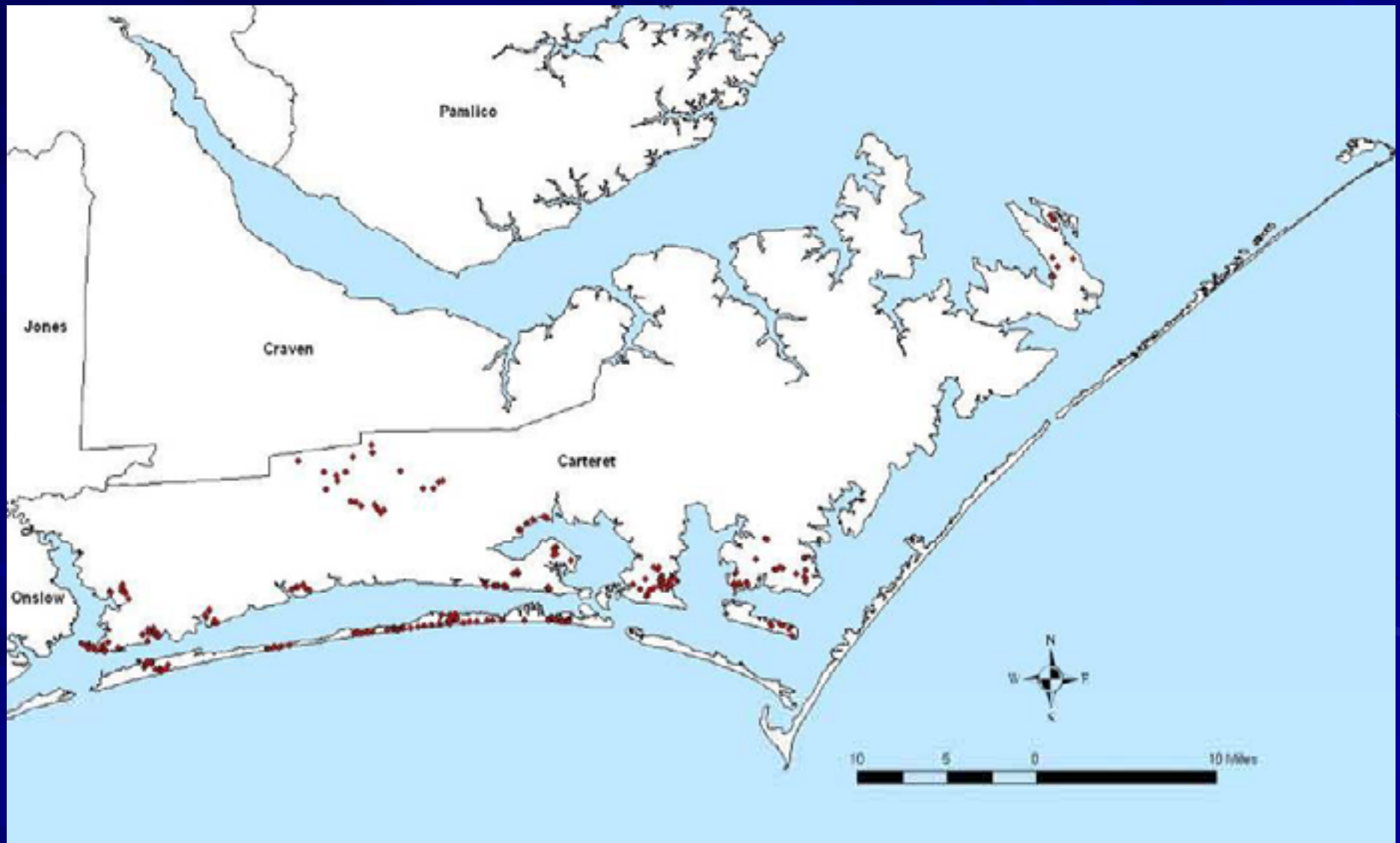
- Shaded-X
- VE Blocks
- AEFW Blocks
- AO Blocks
- AE Blocks
- Non-Flood Blocks

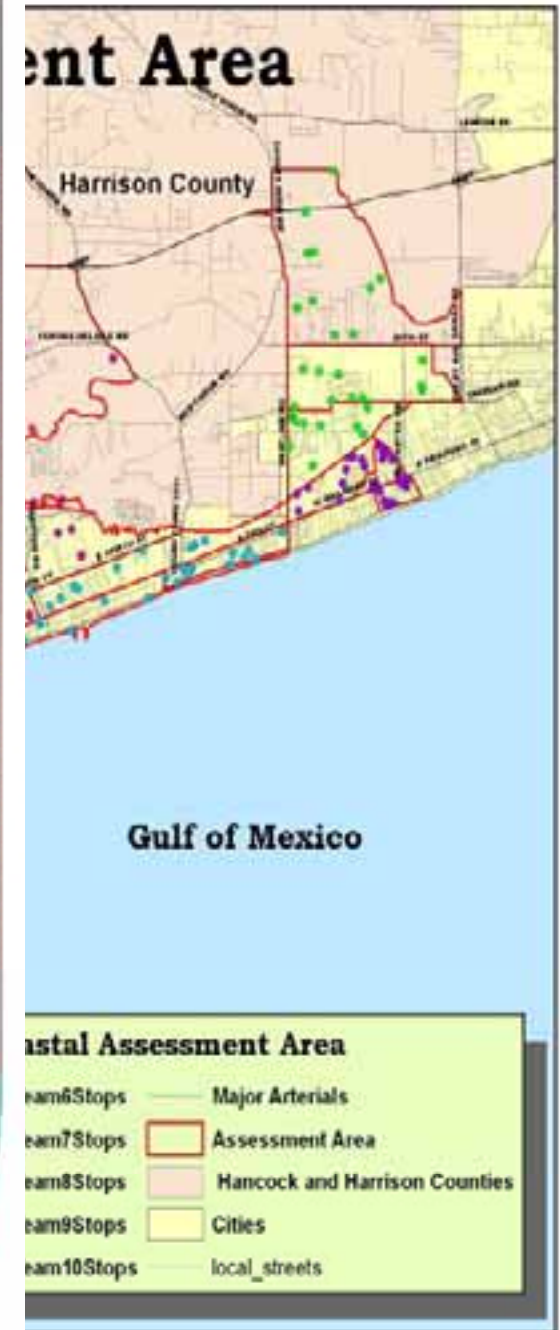
Jennifer Horney, MA, MPH
Cynthia Snider, MHS
Sandra Malone
Laura Gammons
Steve Ramsey

Prepared by:
Steve Ramsey
PHRST-5

Jenifer Horney
NCCPHP

Interview Locations





General Patient Info OK X

Page 1 Page 2 Page 3

Last Name:

First Name:

Middle Name:

Race: Hispanic or Latino:

Home Add:

City: ST:

Zip: Sex:

Date of Birth:

Next >

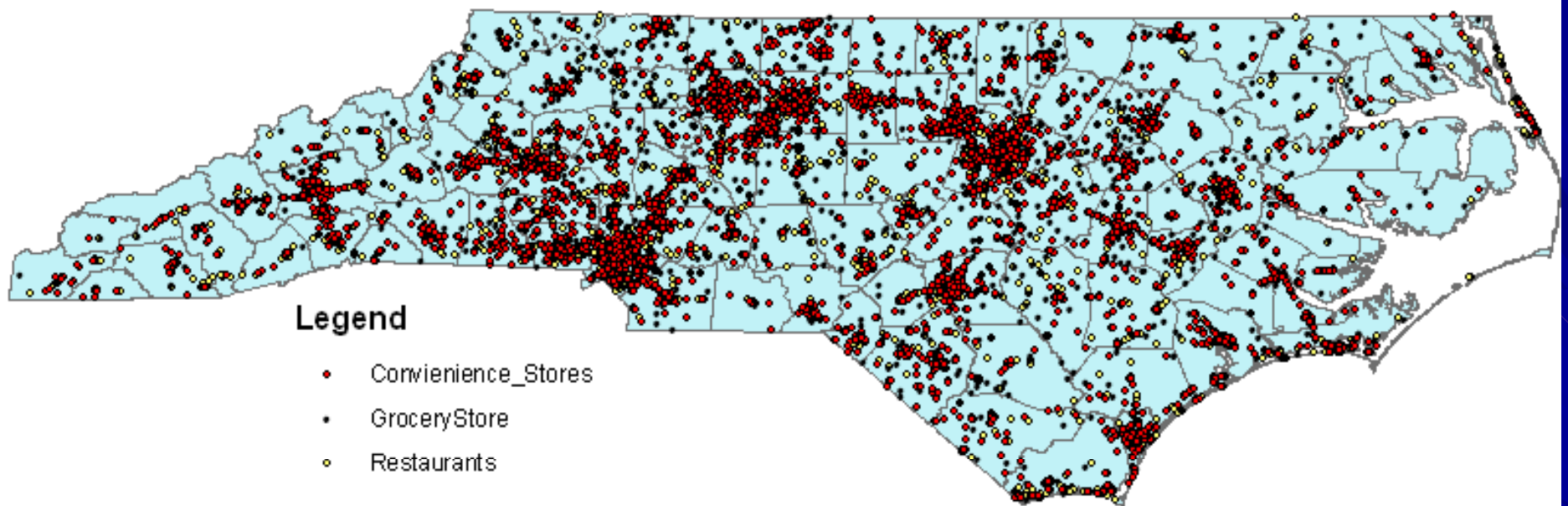
ArcPad 9:38

- Coastal Assessment Area**
- eam6Stops Major Arterials
 - eam7Stops Assessment Area
 - eam8Stops Hancock and Harrison Counties
 - eam9Stops Cities
 - eam10Stops local_streets

Project 516 and the Food Recall



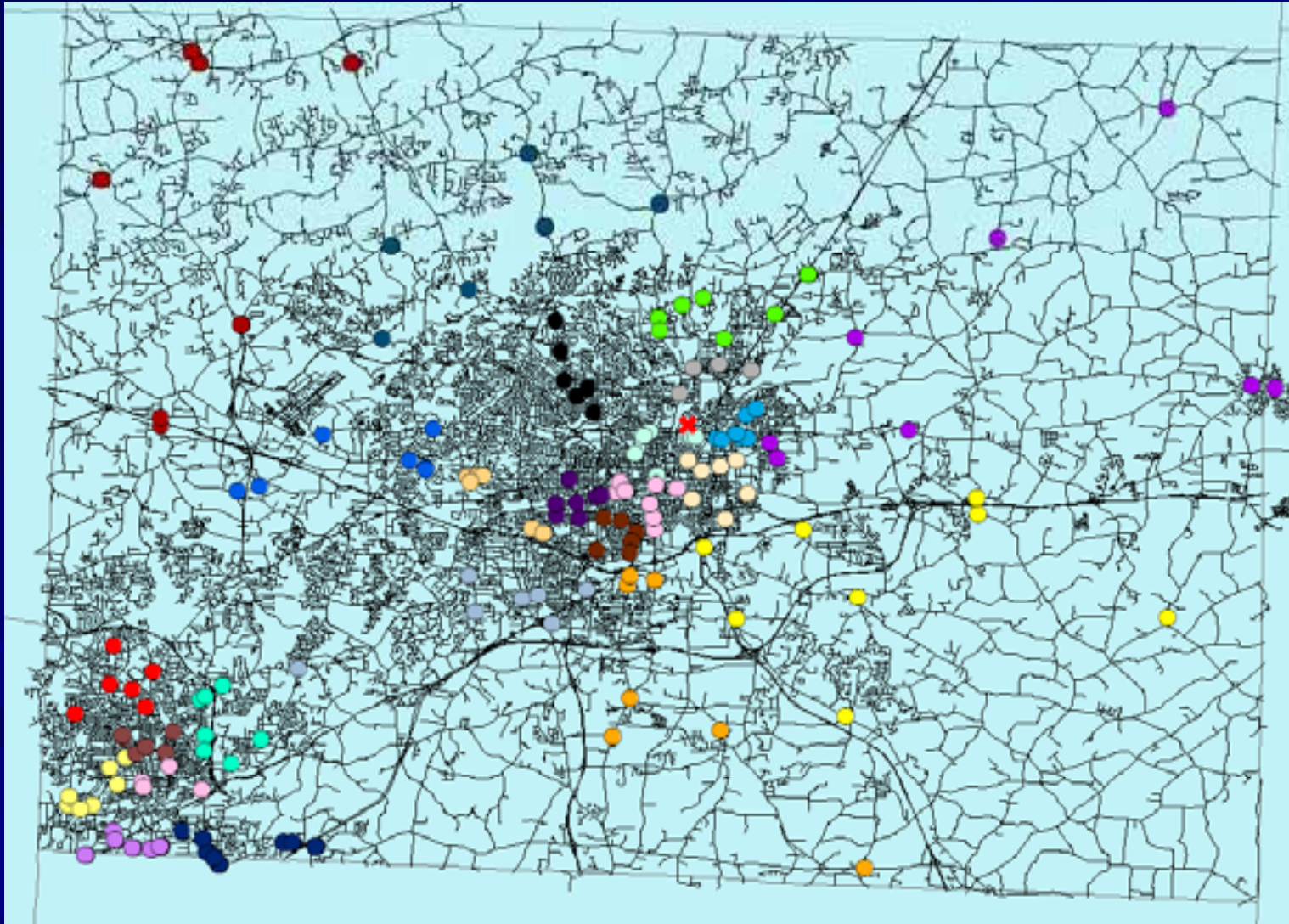
MHTD



WIC Vendors to Geocode

STORE_NAME	#	SUITE	DIRECTION	ADDRESS	SUFFIX	CITY	ZIP
Burton's Valurite Pharma	120		E	120 E LINDSAY St	St	Greensboro	27401
Bestway	2113			2113 E WALKER Ave	Ave	Greensboro	27403
CVS Pharmacy #4431	1615			1615 SPRING GARDEN St	St	Greensboro	27403
Compare Food Market	1040			1040 SUMMIT Ave	Ave	Greensboro	27405
Save A Lot #281	3111			3111 YANCEYVILLE St	St	Greensboro	27405
Tip Top Grocery	4608			4608 SUMMIT Ave	Ave	Greensboro	27405
CVS Pharmacy #5593	3341			3341 RANDLEMAN Rd	Rd	Greensboro	27406
Fairway One Stop #8	1301		S	1301 S EUGENE St	St	Greensboro	27406
Florida Grocery	803		W	803 W FLORIDA St	St	Greensboro	27406
Key Food Market Place	1050			1050 ALAMANCE CHURCH Rd	Rd	Greensboro	27406
Save A Lot #280	429		W	429 W MEADOWVIEW Rd	Rd	Greensboro	27406
99¢ and Food Center	4925	1110	W	4925 W MARKET St	St	Greensboro	27407
Abarrotes El Azteca	4131	D		4131 SPRING GARDEN St	St	Greensboro	27407
Hispanica	2200	C		2200 MEADOWVIEW Rd	Rd	Greensboro	27407
La Preciosa	4614		W	4614 W MARKET St	St	Greensboro	27407
La Vaca Ramona	4516		W	4516 W MARKET St	St	Greensboro	27407
Super K-Mart Center	1302			1302 BRIDFORD PKWY	PKWY	Greensboro	27407
Kerr Drugs #332	2190			2190 LAWNSDALE Dr	Dr	Greensboro	27408
Randy's Produce	5416	A	W	5416 W MARKET St	St	Greensboro	27409
Bottom Dollar	3136			3136 KIVETT Dr	Dr	High Point	27260
Cloverleaf	133			133 MONTLIEU Ave	Ave	High Point	27260
Green Street Grocery	1924		E	1924 E GREEN St	St	High Point	27260
Horn Red Dot	345			345 ENNIS St	St	High Point	27260
Kerr Drugs #3315	912		E	912 E GREEN Dr	Dr	High Point	27260
La Fabulosa #3	810			810 MAIN St	St	High Point	27260
Pantry Shop #4	3000		W	3000 W ENGLISH St	St	High Point	27260
Pequeno Mexico	800		S	800 S MAIN St	St	High Point	27260
Save A Lot #285	131			131 GREENSBORO Rd	Rd	High Point	27260
CVS Pharmacy #3988	2200			2200 WESTCHESTER Dr	Dr	High Point	27262
Stokesdale Bi Rite	8632			8632 MAIN St	St	Stokesdale	27357

Staging and team configuration

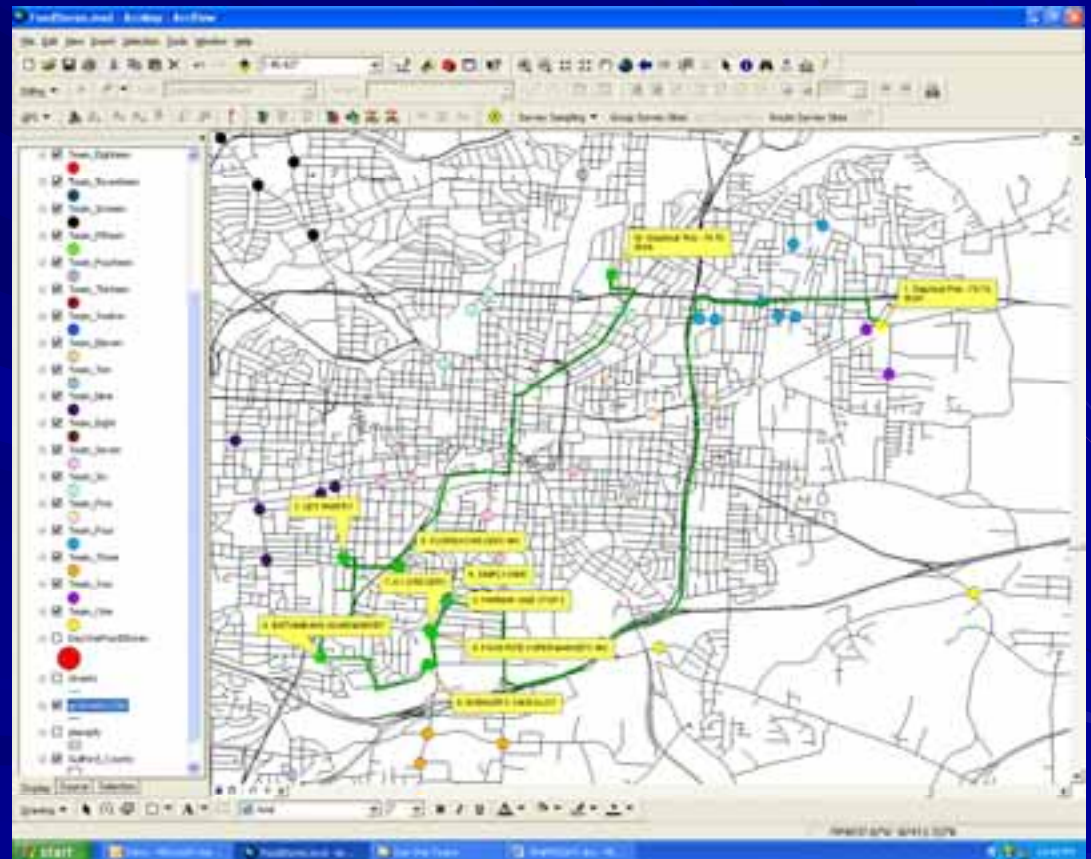


Team map and written directions

TEAM EIGHT

Driving distance: 14.4 mile(s) Driving time: 22 minute(s)

- 1: Depart Graphical Pick: -79.74, 36.08
- 2: Go West on E Bessemer Ave toward Huffine Mill Rd 0.1 mile(s) < 1 minute
- 3: Turn right on Elwell Ave 0.2 mile(s) < 1 minute
- 4: Turn left on USHY 70 (E Wendover Ave) 1.2 mile(s) 1 minute(s)
- 5: Turn right onto ramp and go South West on USHY 29 (N Ohenry Blvd) 4.4 mile(s) 4 minute(s)
- 6: Take ramp to S Elm Eugene St 0.1 mile(s) < 1 minute
- 7: Turn right on S Elm Eugene St 0.7 mile(s) 1 minute(s)
- 8: Turn left on W Terrell St 0.4 mile(s) < 1 minute
- 9: Arrive at FAIRWAY ONE STOP 2
- 10: Depart FAIRWAY ONE STOP 2
- 11: Continue West on W Terrell St < 0.1 mile(s) < 1 minute
- 12: Arrive at SIMPLY KWIC
- 13: Depart SIMPLY KWIC
- 14: Go back East on W Terrell St < 0.1 mile(s) < 1 minute
- 15: Make sharp right on Randleman Rd 0.3 mile(s) < 1 minute
- 16: Turn right on Mobile St < 0.1 mile(s) < 1 minute
- 17: Arrive at A 1 GROCERY
- 18: Depart A 1 GROCERY
- 19: Go back East on Mobile St < 0.1 mile(s) < 1 minute



Database schema standardization

- Worked with NCDA Emergency Programs to use the same database schema being collected on their web-based data collection form.

```
🔑 RecallEntryID (PK, bigint, not null)
📄 storeName (varchar(200), null)
📄 address (varchar(200), null)
📄 city (varchar(200), null)
📄 county (varchar(200), null)
📄 zip (varchar(200), null)
📄 productForSale (varchar(200), null)
📄 cansRemoved (int, null)
📄 supplier (varchar(200), null)
📄 disposed (varchar(200), null)
📄 comments (varchar(200), null)
📄 entryBy (varchar(200), null)
📄 entryCounty (varchar(200), null)
📄 entryDate (smalldatetime, null)
📄 EntrySubmitted (datetime, not null)
📄 sessionID (varchar(200), null)
```

Food and Drug Form 100 for Arcpad

Food Recall

Tap or Click Here to Begin

OK Cancel

F & D 100

Page 1 | Page 2

Your Name / Title:
STEVE RAMSEY

Your county:

Date of Survey

Store Name:
JONS TRADE MART

Address:
123 ANYWHERE STREET

OK Cancel

F & D 100

Page 1 | Page 2

Disposed of or held:

of Cans Removed:

Supplier:

Was product offered for sale at time of visit:

Comments:

City:

County:

Zip:

OK Cancel

Summary

- Day 1 – 262 inspections (34 people)
- Day 2 – 345 inspections (28 people)
- Day 3 – 263 inspections (22 people)
- Day 4 – 54 inspections (7 people)
- Total – 924 inspections

For further questions,
please contact:
336-641-7777

Steve Ramsey, RS
**Regional Surveillance Team
Leader**
sramsey@co.guilford.nc.us

Jared Hill, CHES
Statistical Research Assistant
jhill@co.guilford.nc.us

Mark H. Smith, Ph.D.
Epidemiologist
msmith@co.guilford.nc.us