

Geographical Distribution Analysis - A Practicum Experience

# USING COMMUNITY ASSESSMENTS IN PRIORITIZING, PLANNING & ALLOCATING RESOURCES

## CO-PRESENTERS

Oscar J. Munoz  
Deputy Director  
Center for Housing and Urban Development (CHUD)  
Texas A&M University

Kamran Baig, MBBS, MPH (c)  
Graduate Research Assistant  
Center for the Study of Health Disparities

Center for the Study of Health Disparities  
College of Education and Human Development  
Department of Health & Kinesiology  
[www.tamucshd.org](http://www.tamucshd.org)



## CO-AUTHORS: BAIG, K., MUNOZ, O, & SHAW, M. (2010)

### CHUD Vision

Improve the quality of life (People) and the quality of the built environment (Place),

### Mission

the specific mission of CHUD is to conceive, develop and deliver integrated, sustainable, scalable, flexible, evidence-based, outcome-driven, and technology-enabled solutions to achieve our vision.

### CSHD Vision

Transform the health and education landscape of Texas and beyond.

### Mission :

To stimulate research, education, training, advocacy, and policy development that benefits communities and contributes to eliminating health and health care disparities.

# PURPOSE OF STUDY

---

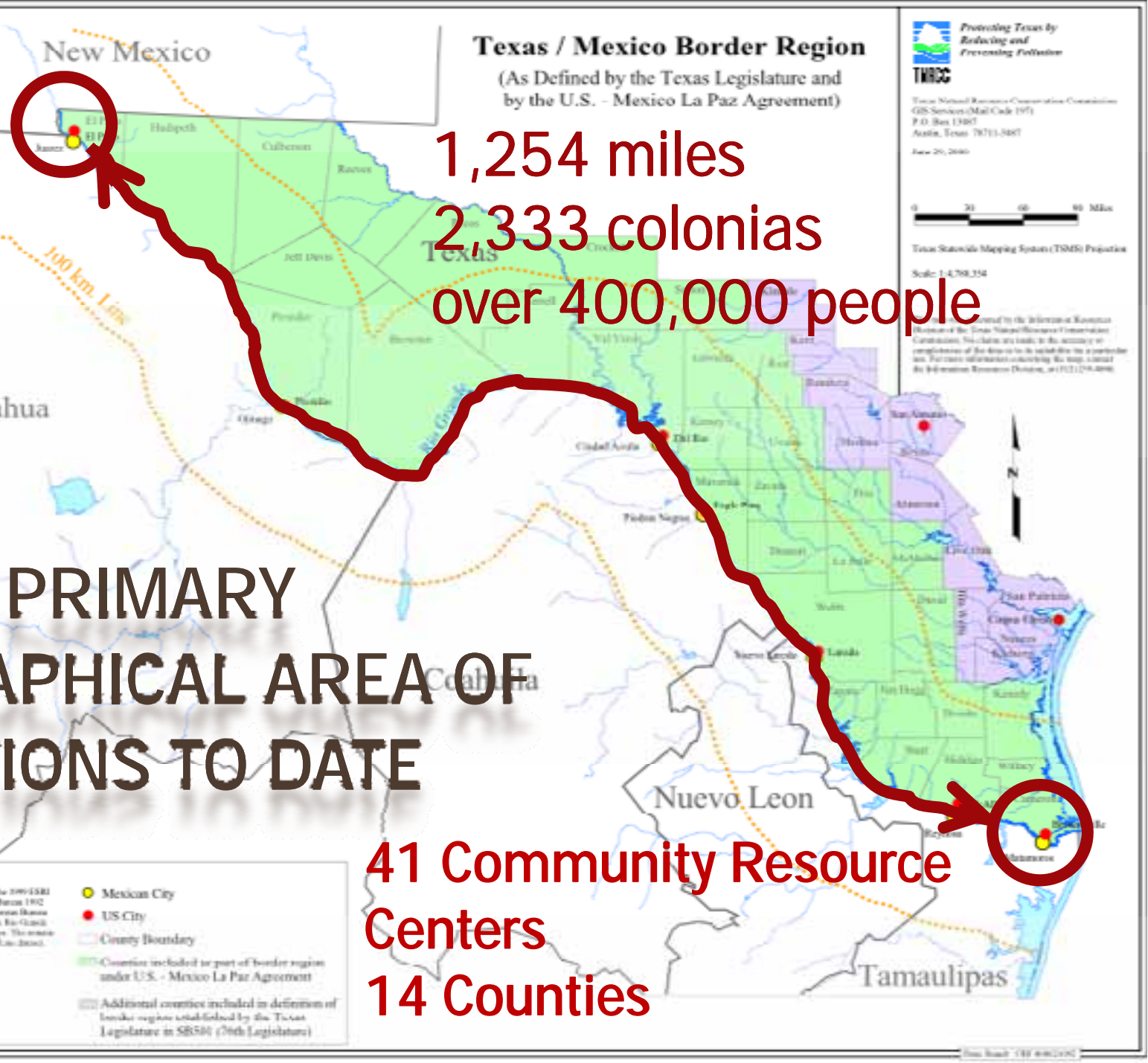
- ❖ To determine the expressed needs of colonia residents
- ❖ To use needs assessment data for future planning, prioritizing, and allocating limited resources to address service gaps

# INTRODUCTION

## Colonia:

- ❖ *Colonia* is a Spanish term for neighborhood or community. It has come to have a very different meaning over time...
- ❖ The Office of the Texas Secretary of State defines a *colonia* as:  
“a residential area along the Texas-Mexico border that lacks some of the basic living necessities, such as potable water and sewer systems, electricity, paved roads and safe and sanitary housing.”





**Texas / Mexico Border Region**  
(As Defined by the Texas Legislature and by the U.S. - Mexico La Paz Agreement)

1,254 miles  
2,333 colonias  
over 400,000 people

**CHUD'S PRIMARY  
GEOGRAPHICAL AREA OF  
OPERATIONS TO DATE**

41 Community Resource  
Centers  
14 Counties

- Legend:**
- Source: The Mexican States and New Mexico data were taken from the 1991 ESRI Data & Maps CD. The counties were derived from the U.S. Census Bureau 1992 ESRI/USGS Line dataset. The U.S. cities were extracted from the U.S. Census Bureau 1990 ESRI/USGS Line dataset. The Mexican cities were from ESRI's The Geo-Graphic and its information were from the ESRI's 1994 Geo-Graphic Hydro Layer. The primary log stream was derived from the U.S. Census Bureau 1992 ESRI/USGS Line dataset.
  - State Boundary
  - 100 Kilometers From Border
  - Lake / Water Body
  - Major Stream
  - Mexican City
  - US City
  - County Boundary
  - Counties included for part of border region under U.S. - Mexico La Paz Agreement
  - Additional counties included in definition of border region established by the Texas Legislature in SB550 (76th Legislature)

Protecting Texas by  
Reducing and  
Preventing Pollution  
**TNRCC**  
Texas Natural Resource Conservation Commission  
GIS Services (Mail Code 197)  
P.O. Box 13467  
Austin, Texas 78711-3467  
June 26, 2000

0 20 40 60 Miles  
Texas Statewide Mapping System (TSMIS) Project  
Scale: 1:4,750,354

Prepared by the Information Resources  
Division of the Texas Natural Resource Conservation  
Commission. This data is made available in the service of  
completion of the data set to its subscribers on a particular  
basis. For more information concerning this data, contact  
the Information Resources Division, at (512) 249-4000.

# COLONIA SNAPSHOTS

- ❖ *Colonias* are also found within city limits.
- ❖ Upon receiving basic services, some *colonias* are annexed by an adjacent city
- ❖ Others choose to incorporate in hopes of becoming eligible as applicants for federal and state funding, and assistance in the delivery of services to its residents.



# METHODS

---

- ❖ Texas A&M University - Colonias Program Network engages and rotates 20 to 30 service providers in each center on weekly basis.
- ❖ Promotora – community health worker.
  - Residents of the community.
  - Recruited and trained by Texas A&M staff.
  - Data gathering, outreach & training
  - Conduct door to door and face to face surveys.
  - Disseminate information

# METHODS (CONT.)

The survey questionnaire included:

Demographics

Education

Employment

Youth services

Health and Human Services

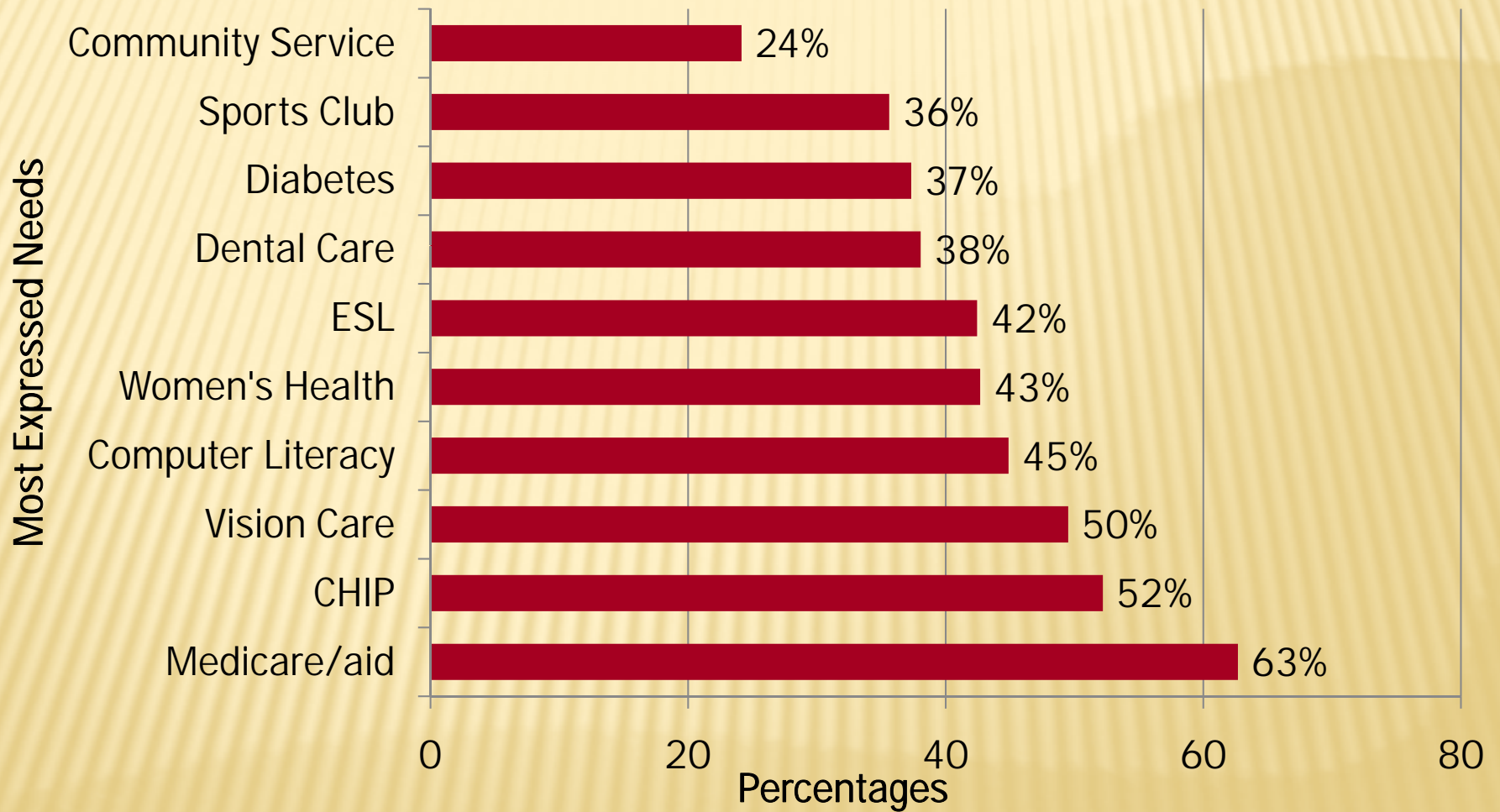
Senior Citizen Services

Transportation

- ❖ Surveys were administered by *promotoras* and submitted to the regional community center
- ❖ Data entered into Access database
- ❖ Analysis conducted by GRA



# TEN MOST EXPRESSED NEEDS



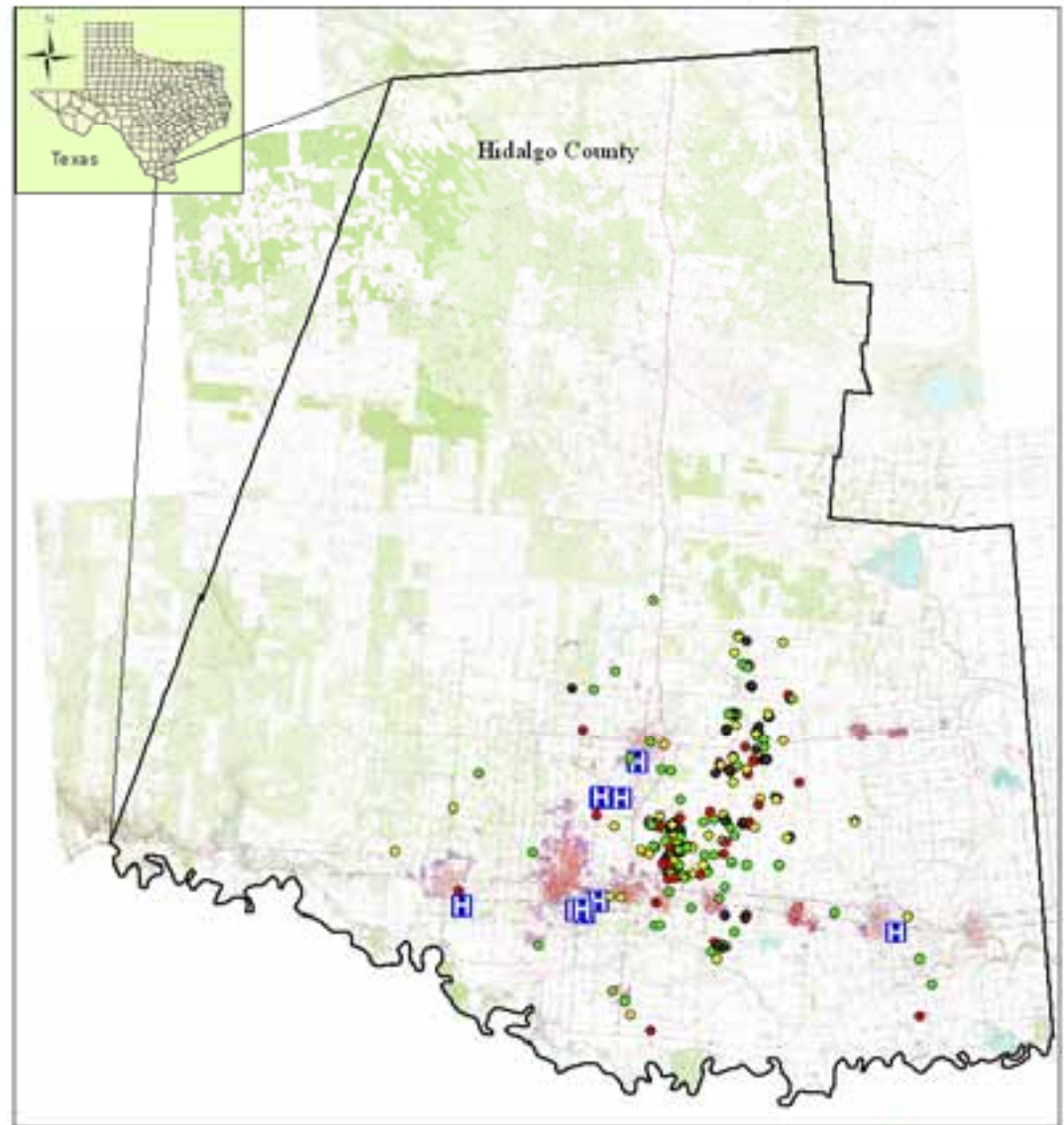
# GEO-CODING

- ❖ Synchronization of Arc Map and Google Earth
- ❖ Geo-coded Addresses=333 (81%)
- ❖ Unmatched= 77 (19%)

## Vision Care, Dental Care

- Yes, No response
- Yes, Yes
- No response, No response
- No response, Yes
- 🏥 Hospitals in Hidalgo

Geo-coded households in Colonias of Hidalgo County



Geocoded\_Households

Vision Care, Dental Care

- Yes, No response
- Yes, Yes
- No response, No response
- No response, Yes
- 🏥 Hospitals in Hidalgo

0 2 4 8 12 16 Miles



# GEOGRAPHICAL DISTRIBUTION ANALYSIS

- ❖ *Mean center* is defined as a point constructed from the average x and y values for the input feature centroids.
- ❖ Calculated the Weighted *Mean Centers* for the houses in need of dental and vision care assistance
- ❖ *Standard Distance* measures the degree to which features are concentrated or dispersed around the points (or feature centroids) in an input feature class.
- ❖ Calculated the weighted *Standard Distance* of the houses

# NETWORK ANALYST

---

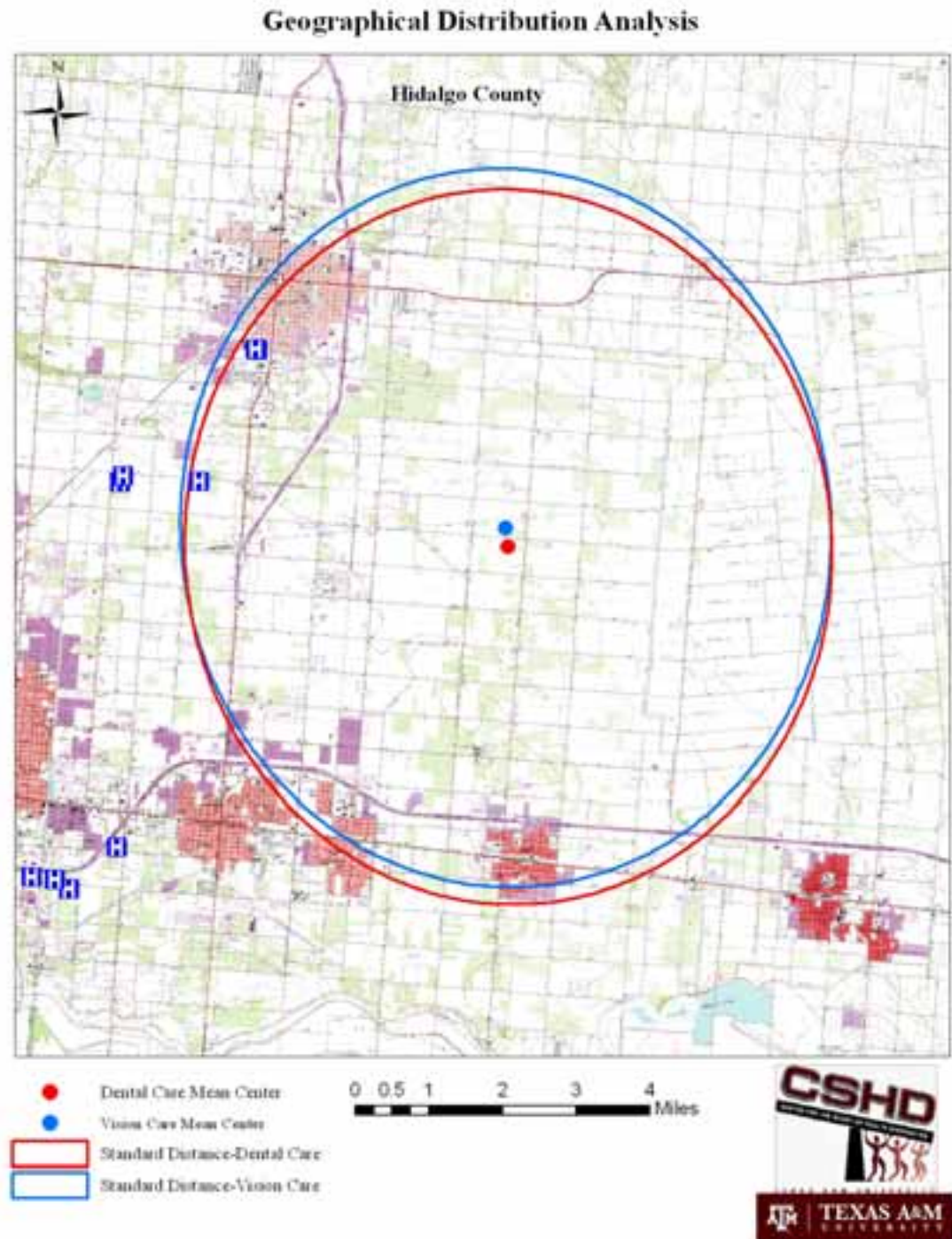
- ✘ The network analyst tool was used to calculate the minimum distance of all the households from the nearest health care facility

## CLIPPING

- ✘ The clipping feature was used to identify the colonias within the radius of standard distance, this enabled us to calculate the total population with in that standard distance.

# RESULTS

- ❖ Weighted mean center for dental care and vision care assistance were found to be at a distance of 0.3 miles from each other.
- ❖ It was observed that 68% (1SD) of the households were clustered within a radius of 5 miles around the mean centers.
- ❖ Interestingly there were two hospitals within this radius.



## RESULTS (CONT.)

- ❖ The minimum distance of households from the nearest facility in miles were:

Minimum Distance	Maximum Distance	Mean Distance
0.52	12.41	5.71

- ❖ To determine the association between the distance and expressed needs we used logistic regression in SAS

Service	Odds Ratio	95% CI	p-value
Dental care	0.96	0.855 – 1.078	0.492
Vision care	1.083	0.968 – 1.212	0.164

# CONCLUSION

---

- ❖ Analysis revealed there was no significant association, indicating that distance was not a barrier.
- ❖ Findings suggest that colonias residents cannot utilize the services provided by the existing health care facilities in the vicinity.
- ❖ Possibility that the hospitals do not provide dental and vision care services.

# RECOMMENDATIONS

- ❖ Within the standard distance around the mean centers for expressed dental and vision care needs, health planners could:
  - Build a community clinic or
  - Provide a mobile clinic
- ❖ This would provide services to approximately 12,000 residents in that radius of 5 miles







# Center for the Study of Health Disparities

## Budding Scholars



Graduate Research Assistant  
**Daniel Adame, BS**  
Dept. of Health & Kinesiology  
Texas A&M University  
[dadame@hlkn.tamu.edu](mailto:dadame@hlkn.tamu.edu)



Graduate Research Assistant  
**Bonny Chang, BS**  
Dept. of Educational Psychology  
Texas A&M University  
[bchang@hlkn.tamu.edu](mailto:bchang@hlkn.tamu.edu)



Graduate Scholar  
**Araceli Lopez-Arenas, MS**  
Dept. of Educational Psychology  
Texas A&M University  
[lopezara@gmail.com](mailto:lopezara@gmail.com)



Graduate Research Assistant  
**Matthew J. Davis, M.S., PhD (c)**  
Dept. of Health & Kinesiology  
Texas A&M University  
[matthew.j.davis@tamu.edu](mailto:matthew.j.davis@tamu.edu)



Graduate Research Assistant  
**Kimberly M. Bentley, MS, MPH**  
Dept. of Health & Kinesiology  
Texas A&M University  
[kimberlymbentley@hlkn.tamu.edu](mailto:kimberlymbentley@hlkn.tamu.edu)



Undergraduate Research Assistant  
**Rito Herrera**  
Texas A&M University  
[rito.herrera@hotmail.com](mailto:rito.herrera@hotmail.com)



Graduate Research Assistant  
**Kamran Baig, MBBS, MPH (c)**  
School of Rural Public Health  
Texas A&M University  
[kbaig@hlkn.tamu.edu](mailto:kbaig@hlkn.tamu.edu)



Graduate Research Assistant  
**Tasha Joshua, MS, CHES**  
Dept. of Health & Kinesiology  
Texas A&M University  
[tasha926@yahoo.com](mailto:tasha926@yahoo.com)



Graduate Research Assistant  
**Miguel Cano, PhD (c)**  
Dept. of Educational Psychology  
Texas A&M University  
[macano@tamu.edu](mailto:macano@tamu.edu)



Graduate Research Assistant  
**Charles R. Rogers, MSAS**  
Dept. of Health & Kinesiology  
Texas A&M University  
[crogers2@tamu.edu](mailto:crogers2@tamu.edu)



Assistant Director  
**Brandy M. Rollins, MPH, CHES**  
Dept. of Health & Kinesiology  
Texas A&M University  
[brollins@hlkn.tamu.edu](mailto:brollins@hlkn.tamu.edu)



Graduate Research Associate  
**Ledric Sherman, MA**  
Dept. of Health & Kinesiology  
Texas A&M University  
[lsherman@hlkn.tamu.edu](mailto:lsherman@hlkn.tamu.edu)



Graduate Research Assistant  
**Isaac Saldivar, BA**  
Dept. of Educational Psychology  
Texas A&M University  
[isaldivar@hlkn.tamu.edu](mailto:isaldivar@hlkn.tamu.edu)



Graduate Scholar  
**Dave McIntosh, M.Ed**  
Dept. of Educational Administration &  
Human Development  
Texas A&M University  
[dmcintosh@dsmail.tamu.edu](mailto:dmcintosh@dsmail.tamu.edu)



Graduate Research Assistant  
**Kirsten Salerno, MA**  
Dept. of Educational Psychology  
Texas A&M University  
[ksalerno@hlkn.tamu.edu](mailto:ksalerno@hlkn.tamu.edu)

# Center for the Study of Health Disparities

## Center Leadership Team



Director  
**Mary Shaw, PhD, CHES**  
Dept. of Health & Kinesiology  
Texas A&M University  
[mdshaw@hlkn.tamu.edu](mailto:mdshaw@hlkn.tamu.edu)



Assistant Director  
**Brandy M. Rollins, MPH, CHES**  
Dept. of Health & Kinesiology  
Texas A&M University  
[bmrollins@hlkn.tamu.edu](mailto:bmrollins@hlkn.tamu.edu)



Program Coordinator  
**Shelley Humphreys**  
Center for the Study of Health Disparities  
Texas A&M University  
[slhumphreys@hlkn.tamu.edu](mailto:slhumphreys@hlkn.tamu.edu)



Director – Research Core  
**Ranjita Misra, PhD, CHES**  
Dept. of Health & Kinesiology  
Texas A&M University  
[misra@hlkn.tamu.edu](mailto:misra@hlkn.tamu.edu)



Director – Integrated  
Research, Education & Training  
Core (IRETC)  
**Charles Ridley, PhD**  
Dept. of Educational Psychology  
Texas A&M University  
[cridley@tamu.edu](mailto:cridley@tamu.edu)



Director – Education & Training Core  
**Ariane Hollub, PhD, CHES, OTR**  
Dept. of Health & Kinesiology  
Texas A&M University  
[avhollub@hlkn.tamu.edu](mailto:avhollub@hlkn.tamu.edu)



Co-Director – Education & Training (Health  
Services Research)  
**Rosena Clark-Turner, RN, LMSW**  
QulTS – Quality Improvement and Technical  
Support Leader in Home Health Agency Analysis  
and Compliance Support  
[zenaturner@gmail.com](mailto:zenaturner@gmail.com)



Senior Faculty Scholar  
**Verna Keith, PhD**  
Director – Race & Ethnic Studies Institute  
(RESI)  
Dept. of Sociology  
Texas A&M University  
[keithvm@tamu.edu](mailto:keithvm@tamu.edu)



Senior Faculty Scholar  
**Maresa Murray, PhD**  
Health, Physical Education & Recreation  
Indiana University, Bloomington  
[marrjmurr@indiana.edu](mailto:marrjmurr@indiana.edu)

# THANK YOU

## QUESTION & ANSWERS

---