

# Distributing Influenza Like Illness Data Using Georeferenced PDF's in Colorado

Ariann F. Nassel, Devon Williford,  
Christine Billings, Mark Egbert

ESRI Health Users Conference  
October 18<sup>th</sup> 2010



## Collaborative work by:

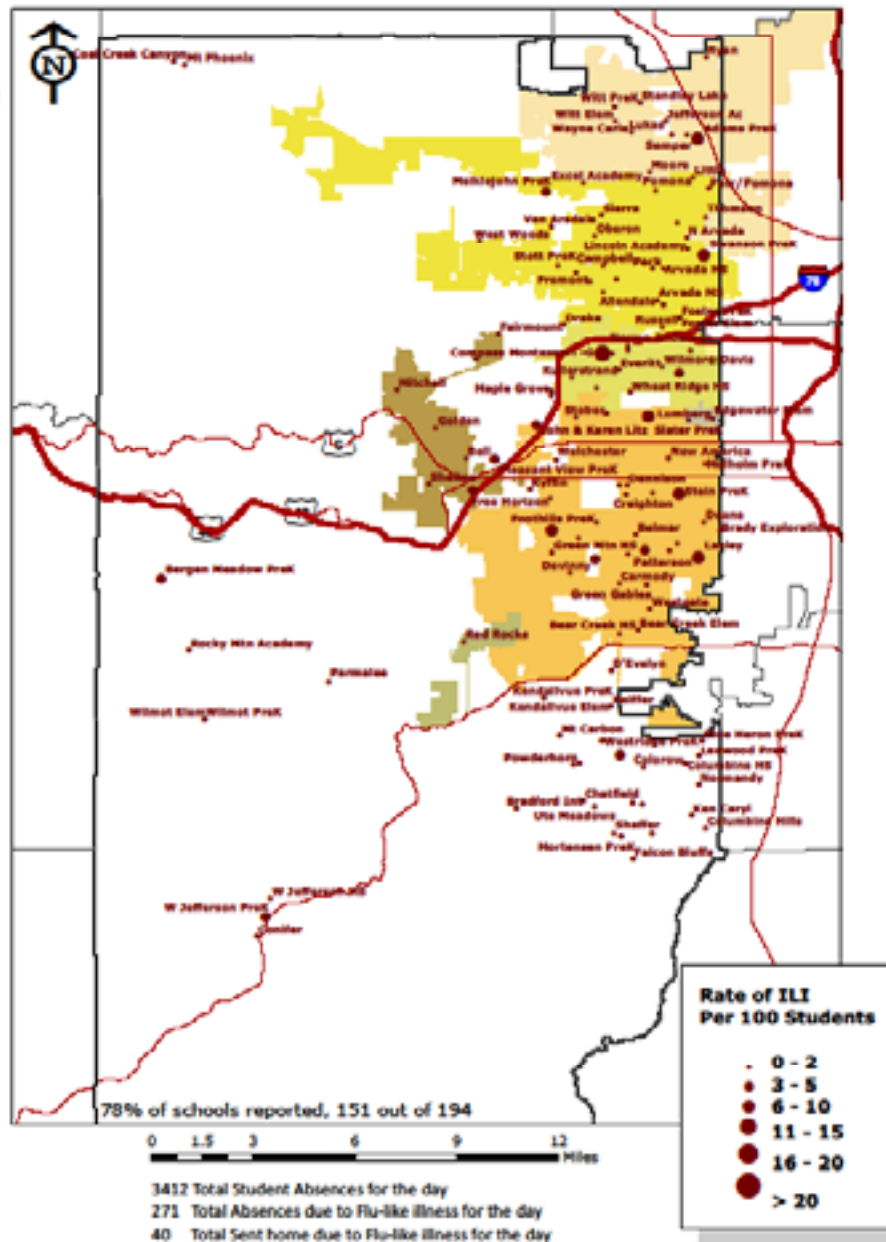
Colorado Dept. of Public Health  
Jefferson County Health Department  
JEFFCO Public Schools

- Ariann Nassel  
afnassel@hotmail.com
- Devon Williford  
devon.williford@state.co.us
- Christine Billings  
cbilling@co.jefferson.co.us
- Mark Egbert  
mark.egbert@state.co.us

## Rate of Influenza Like Illness/Total Enrollment Per 100 Students, By Individual School Enrollment Jefferson County Public Schools, Sept. 22, 2009



Colorado Department  
of Public Health  
and Environment



# Process Steps:

- Determine Layer Ordering
- Convert Features to Graphics
- Convert Labels to Annotation
- Export PDF Layers and Feature Attributes

# Convert Features to Graphic

File Edit View Bookmarks Insert Selection Geoprocessing Customize Windows Help

1:242,927

Editor

Drawing

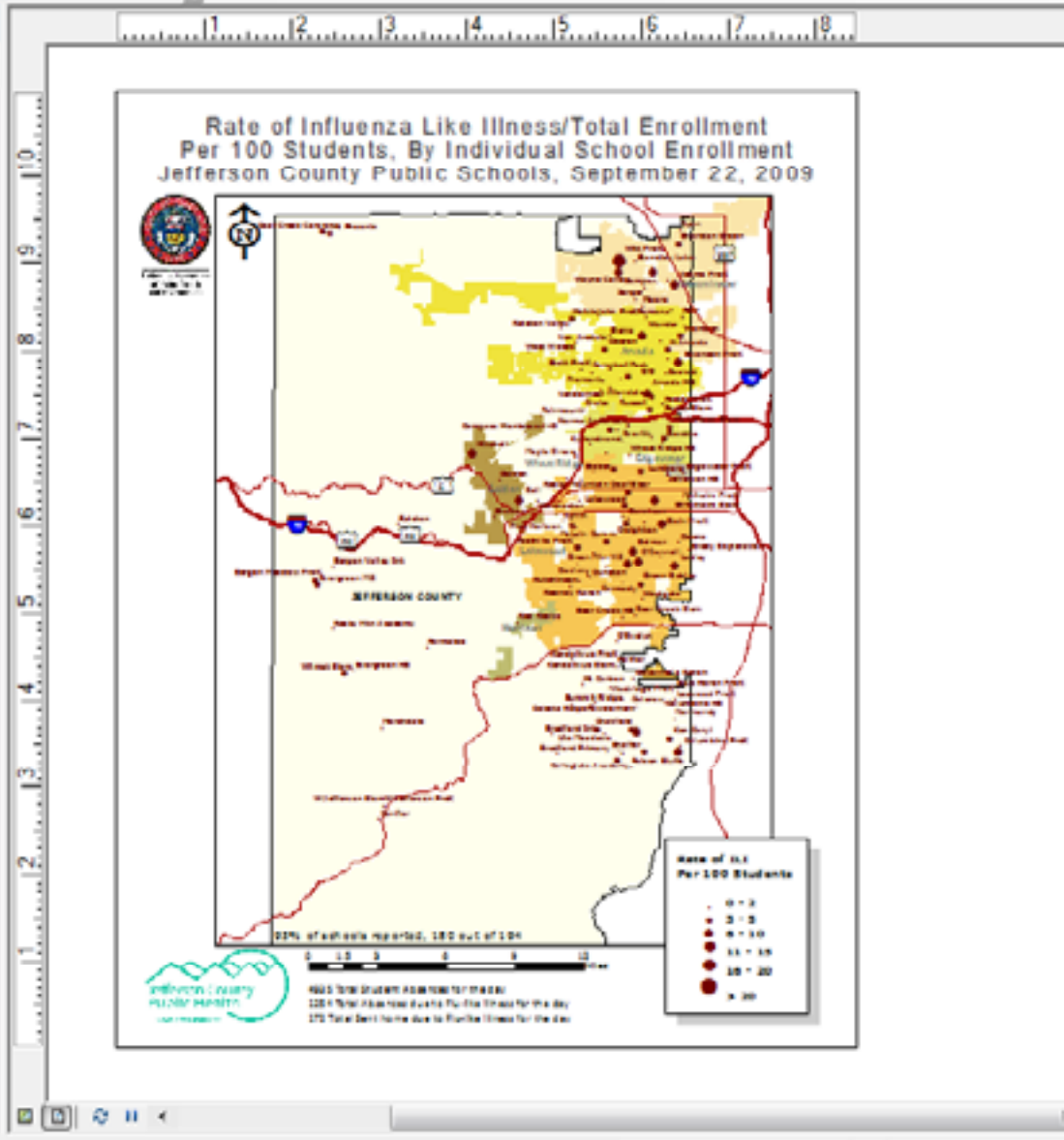
Anal

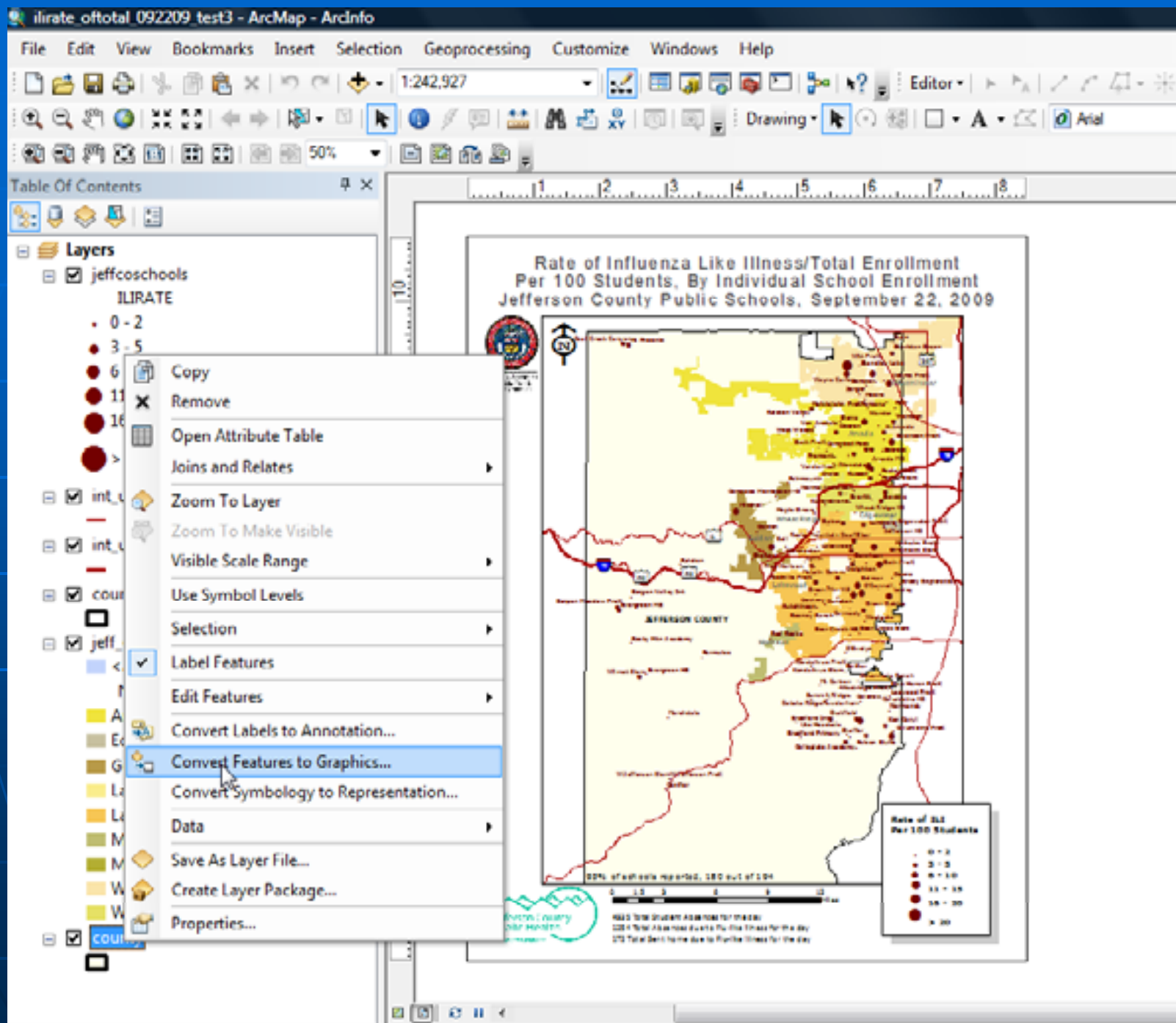
50%

Table Of Contents

Layers

- jeffcoschools
  - ILIRATE
    - 0 - 2
    - 3 - 5
    - 6 - 10
    - 11 - 15
    - 16 - 20
    - > 20
- int\_us\_state
- int\_us\_state
- county
- jeff\_city
  - <all other values>
  - NAME
  - Arvada
  - Edgewater
  - Golden
  - Lakeside
  - Lakewood
  - Morrison
  - Mountain View
  - Westminster
  - Wheat Ridge
- county



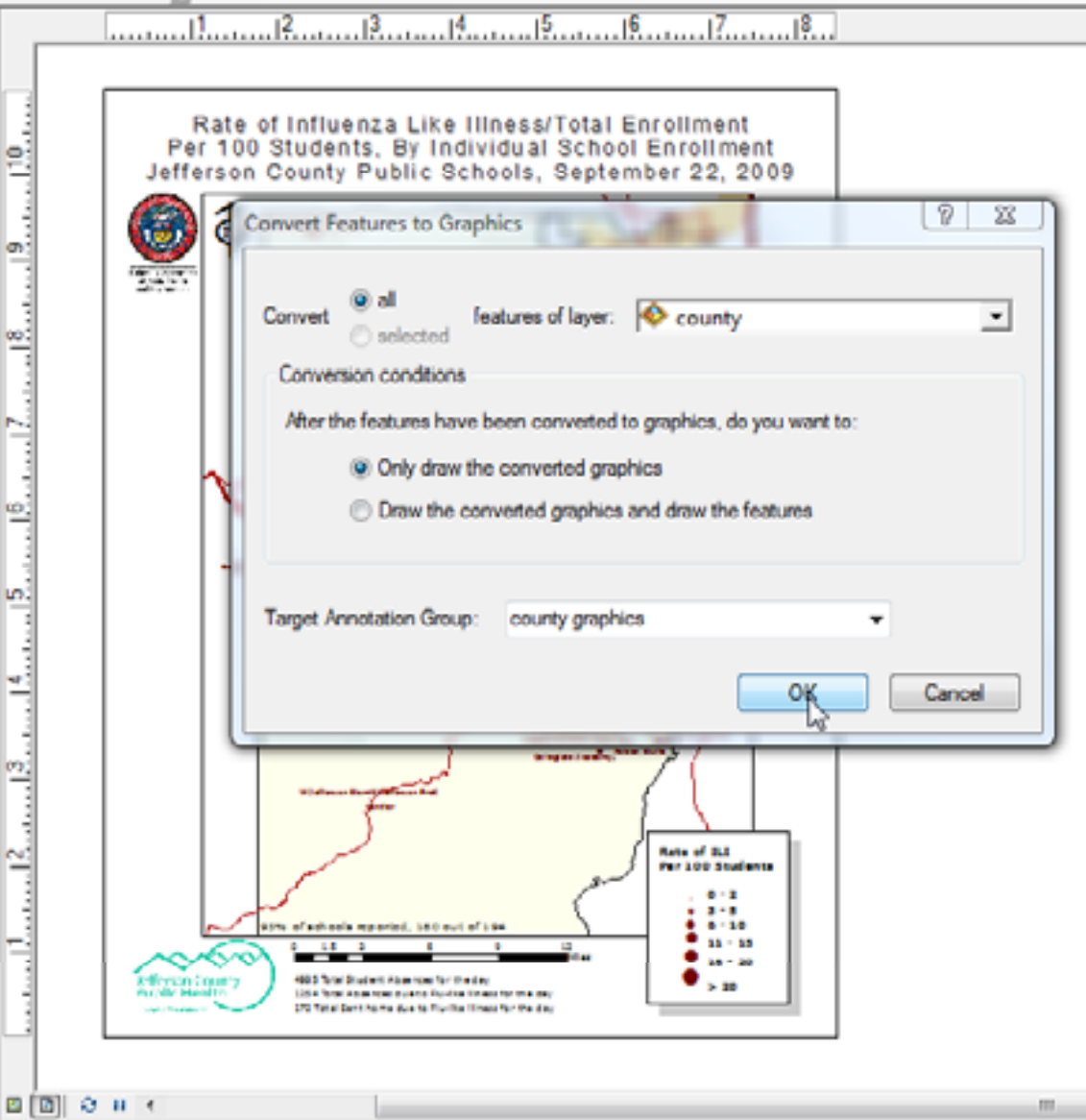


Converts features from a layer into graphics



**Layers**

- jeffcoschools
  - ILIRATE
    - 0 - 2
    - 3 - 5
    - 6 - 10
    - 11 - 15
    - 16 - 20
    - > 20
- int\_us\_state
- int\_us\_state
- county
- jeff\_city
  - <all other values>
  - NAME
    - Arvada
    - Edgewater
    - Golden
    - Lakeside
    - Lakewood
    - Morrison
    - Mountain View
    - Westminster
    - Wheat Ridge
- county

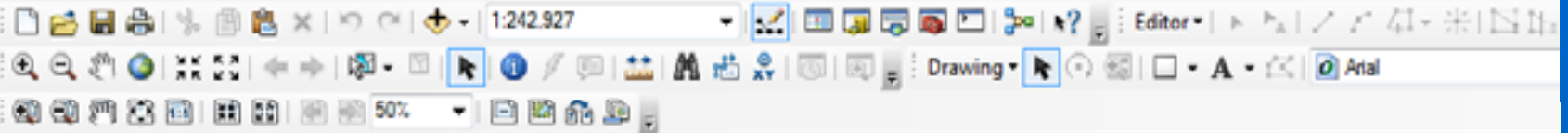




# Convert Labels to Annotation

The screenshot shows the ArcGIS Desktop interface. On the left, the Table of Contents lists several layers, including 'int\_us'. A context menu is open over the 'int\_us' layer, with the option 'Convert Labels to Annotation...' selected. The map area displays a choropleth of ILIR rates per 100 students by school enrollment. The legend indicates six categories: 0-2, 3-5, 6-10, 11-15, 16-20, and > 20. The map shows a concentration of higher rates in the central and eastern parts of the county. A scale bar and north arrow are visible at the bottom of the map frame.

Converts labels currently drawn on this data frame into annotation



Layers

- jeffcosschools
  - ILIRATE
    - 0 - 2
    - 3 - 5
    - 6 - 10
    - 11 - 15
    - 16 - 20
    - > 20
- int\_us\_state
- int\_us\_state
- county
- jeff\_city
  - <all other values>
  - NAME
    - Arvada
    - Edgewater
    - Golden
    - Lakeside
    - Lakewood
    - Morrison
    - Mountain View
    - Westminster
    - Wheat Ridge
- county

### Convert Labels to Annotation

Store Annotation:  In a database  In the map

Reference Scale: 1:242,927

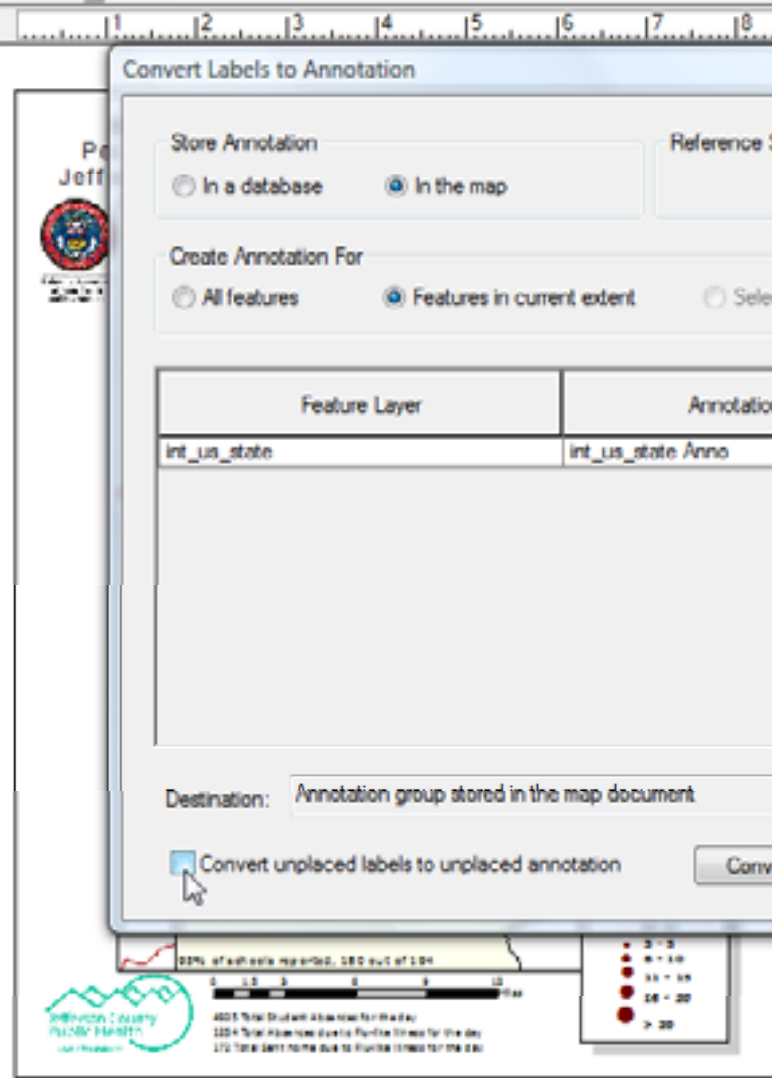
Create Annotation For:  All features  Features in current extent  Selected features

Feature Layer	Annotation Group
int_us_state	int_us_state Anno

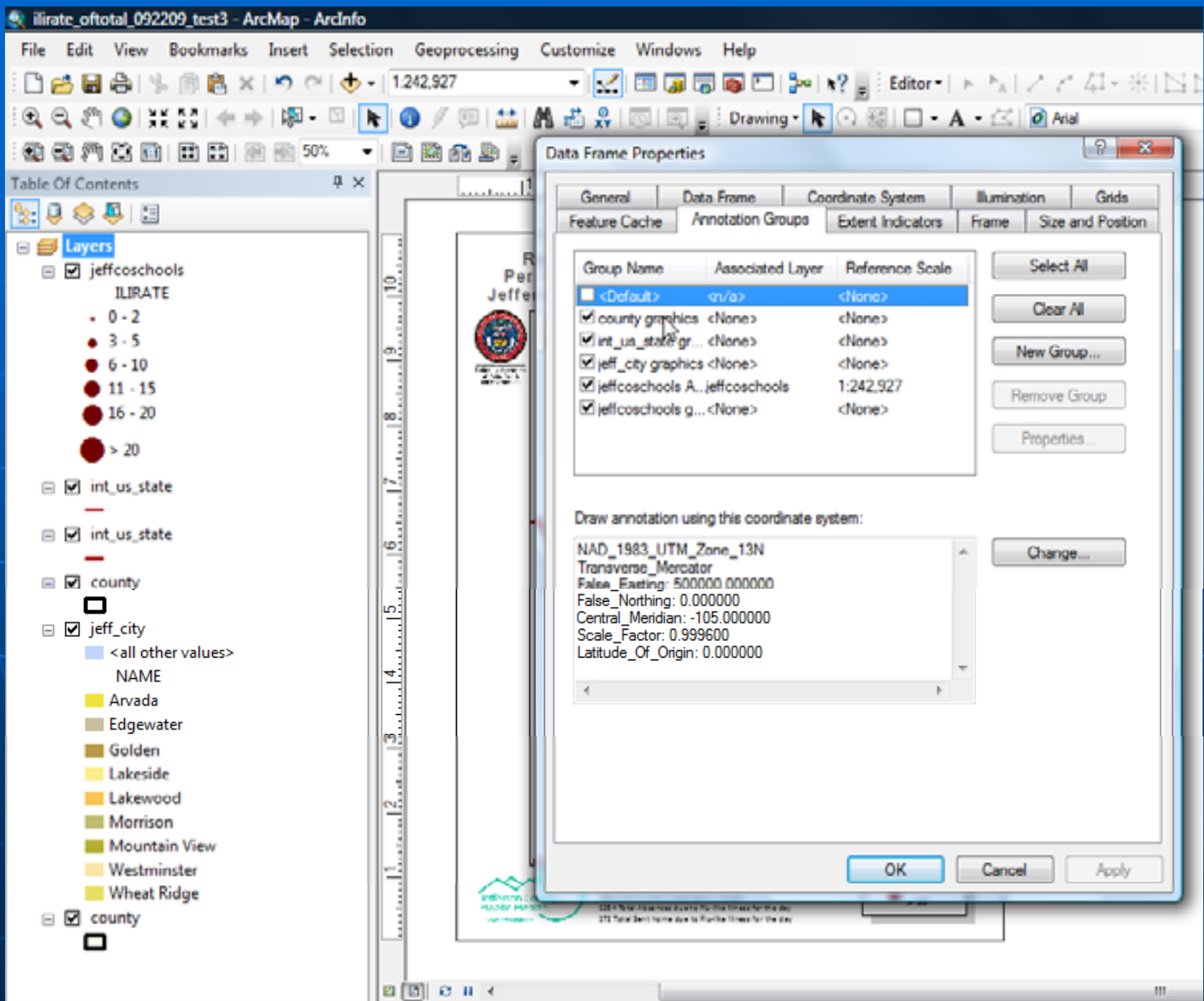
Destination: Annotation group stored in the map document

Convert unplaced labels to unplaced annotation

Convert Cancel



Turn on Annotation Layers in  
Data Frame Properties  
(Annotation Groups Tab)



Turn off all but relevant layers in TOC.

\*Layers left on will have attribute information transferred during the export process

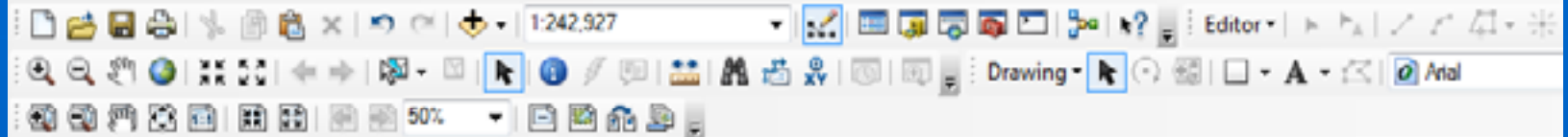
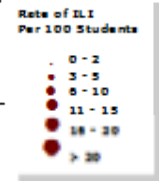
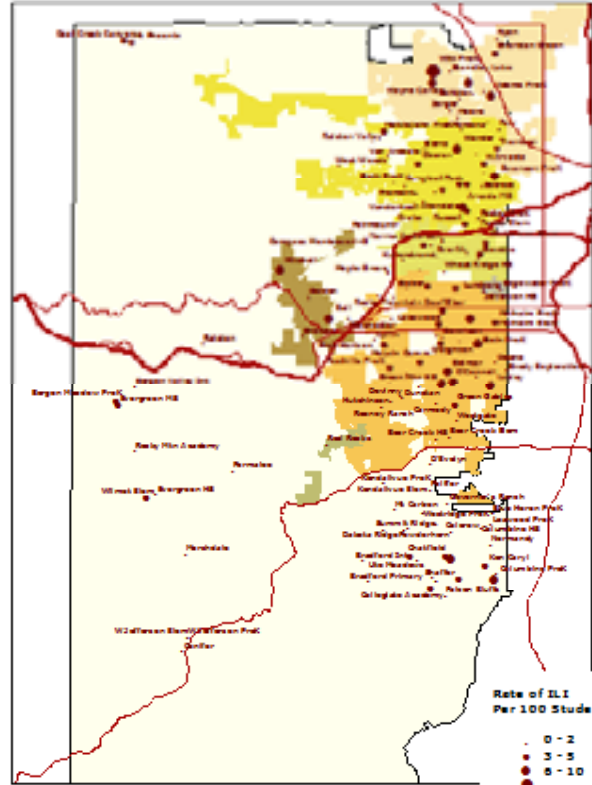


Table Of Contents

Layers	
<input checked="" type="checkbox"/>	jeffcoschools
	ILIRATE
	• 0 - 2
	• 3 - 5
	• 6 - 10
	• 11 - 15
	• 16 - 20
	• > 20
<input type="checkbox"/>	int_us_state
	—
<input type="checkbox"/>	int_us_state
	—
<input type="checkbox"/>	county
	□
<input type="checkbox"/>	jeff_city
	□
	<all other values>
	NAME
	Arvada
	Edgewater
	Golden
	Lakeside
	Lakewood
	Morrison
	Mountain View
	Westminster
	Wheat Ridge
<input type="checkbox"/>	county
	□

### Rate of Influenza Like Illness/Total Enrollment Per 100 Students, By Individual School Enrollment Jefferson County Public Schools, September 22, 2009



Export Map

Under -Options

Advanced Tab

From the -Layers and Attributes drop  
down box

Export PDF Layers and Features Attributes



Table Of Contents

- Layers
  - jeffcoschools
    - ILIRATE
      - 0 - 2
      - 3 - 5
      - 6 - 10
      - 11 - 15
      - 16 - 20
      - > 20
  - int\_us\_state
  - int\_us\_state
  - county
  - jeff\_city
    - <all other values>
    - NAME
    - Arvada
    - Edgewater
    - Golden
    - Lakeside
    - Lakewood
    - Morrison
    - Mountain View
    - Westminster
    - Wheat Ridge
  - county

### Export Map

Save in: Analysis

Name	Date taken	Tags	Size	Rating
ilirate_oftotal_092209_test3				

Recent Places

- Desktop
- Owner
- Computer
- Network

File name: ilirate\_oftotal\_092209\_test3

Save as type: PDF

Options

General | Format | Pages | Advanced

Layers and Attributes: Export PDF Layers and Feature Attributes

- None
- Export PDF Layers Only
- Export PDF Layers and Feature Attributes

Export Map Georeferenced

Warning

Exporting attributes to PDF can lead to performance problems while viewing the file in Adobe Acrobat® or Reader®. If possible, limit exported fields to one layer per map. To suppress field export, turn off field visibility in the Layer Properties dialog.

Clip Output to Graphics Extent

# Takeaway GeoPDF Tips

- Convert Features to Graphics First
- Convert Labels to Annotation
- Think about the order of your layers!
- Edit your Fields (too many takes away from readability)
- Make sure only desired attribute layer is on in TOC before using Export Map

For Process Document or Questions

Contact:

Ariann F. Nassel

ARIANN.NASSEL@UCDENVER.EDU