

National Association of County & City Health Officials: Covering 320 Million Lives

David T. Dyjack, Dr.PH, CIH
Associate Executive Director, Programs

Justin Snair, MPA, Senior Program Analyst
Christopher Mills, Senior Program Assistant



Spotlight: NACCHO

- About us
- About our constituency
- About spatial analysis
- Future journey



Public Health is Profoundly Local



Public Health
Prevent. Promote. Protect.

NACCHO
National Association of County & City Health Officials

About NACCHO

501(c) (3)

2800

Vision

Health, equity, and security for all people in their communities

Mission

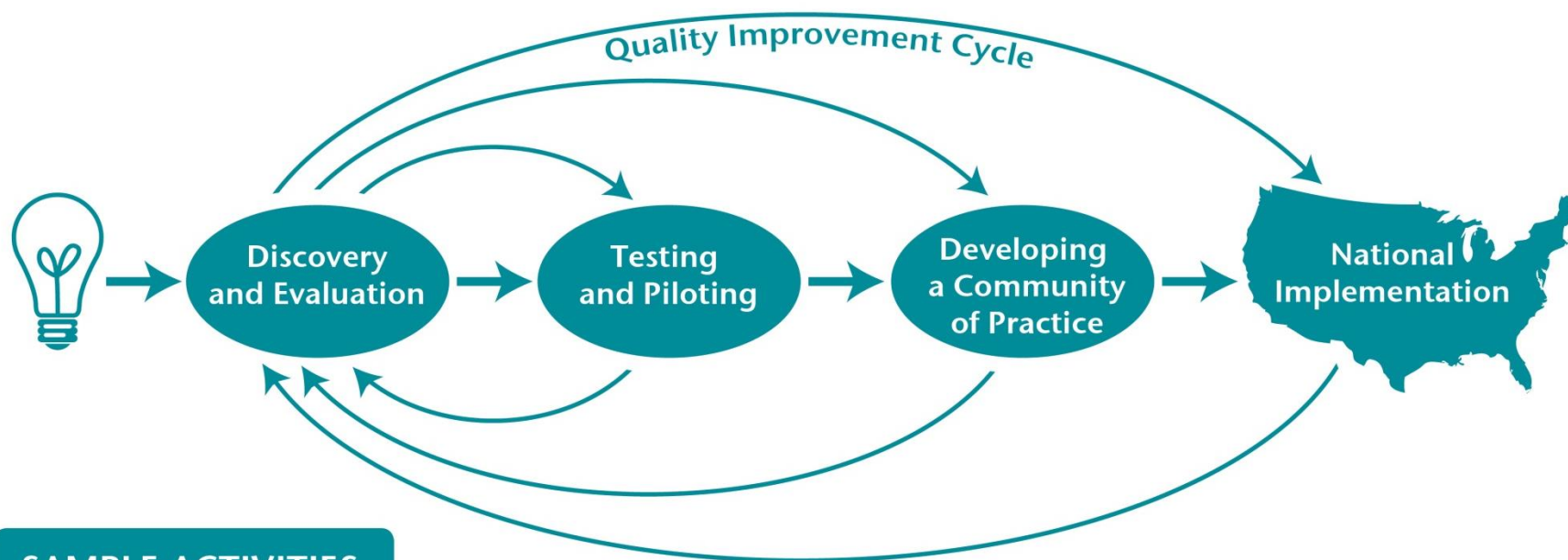
Leader, partner, catalyst, and voice for local health departments



Public Health
Prevent. Promote. Protect.

NACCHO
National Association of County & City Health Officials

NACCHO's Model for Developing New Local Public Health Practices



SAMPLE ACTIVITIES

Discovery and Evaluation

- Conduct literature reviews and/or environmental scanning
- Conduct member polls and surveys
- Conduct needs assessment

Testing and Piloting

- Identify potential funders
- Identify pilot candidates
- Establish advisory workgroups
- Identify potential partnerships

Developing a Community of Practice

- Support demonstration sites
- Provide technical assistance
- Provide training opportunities

National Implementation

- Raise awareness of new practices through communications
- Collect lessons learned and stories from the field
- Showcase new practices at conferences and events

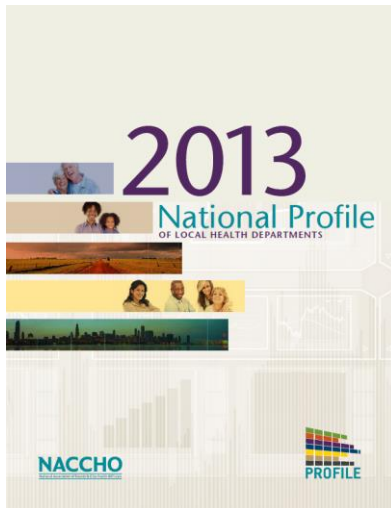
Strengthening Local Health Department Bonds

❖ Research & Evaluation

- Training
- Technical assistance
- Organizational strategies for assessment and surveillance

❖ Toolbox

- Presentations
- Fact sheets
- Drills
- Evaluations
- Protocols
- Templates
- Reports
- Training materials.



400

Tools added



30,850

Downloads

114

Tools added



Public Health
Prevent. Promote. Protect.

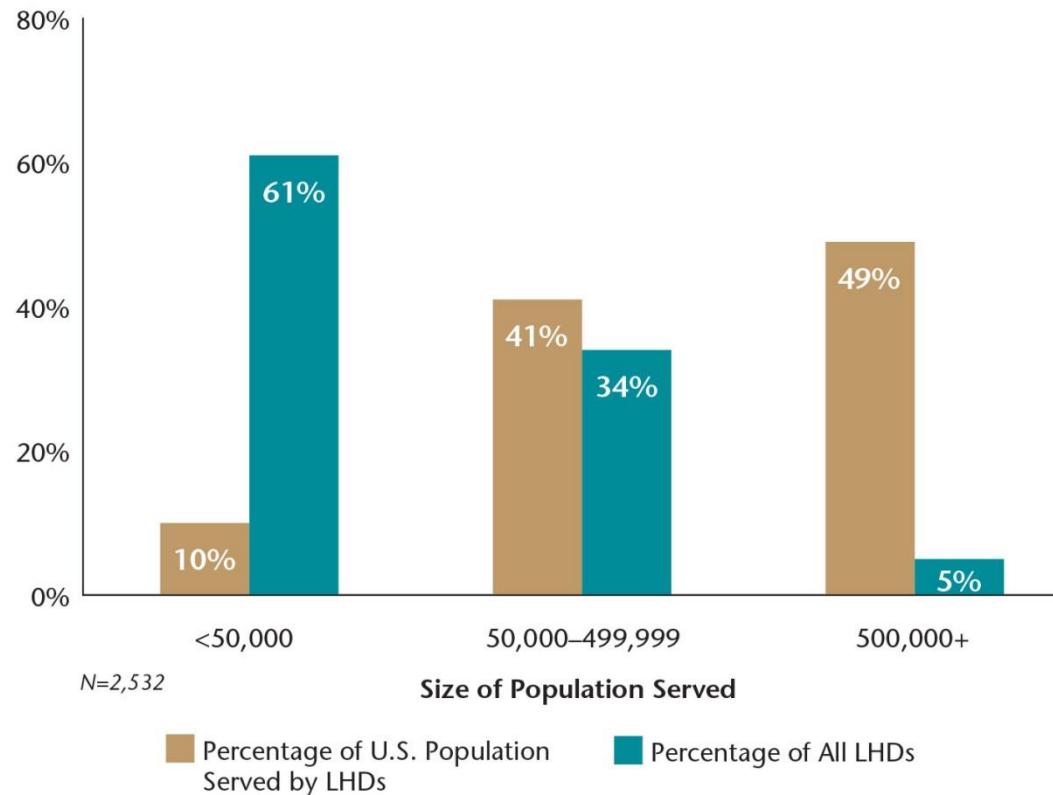
NACCHO
National Association of County & City Health Officials

October 2013 – June 2014

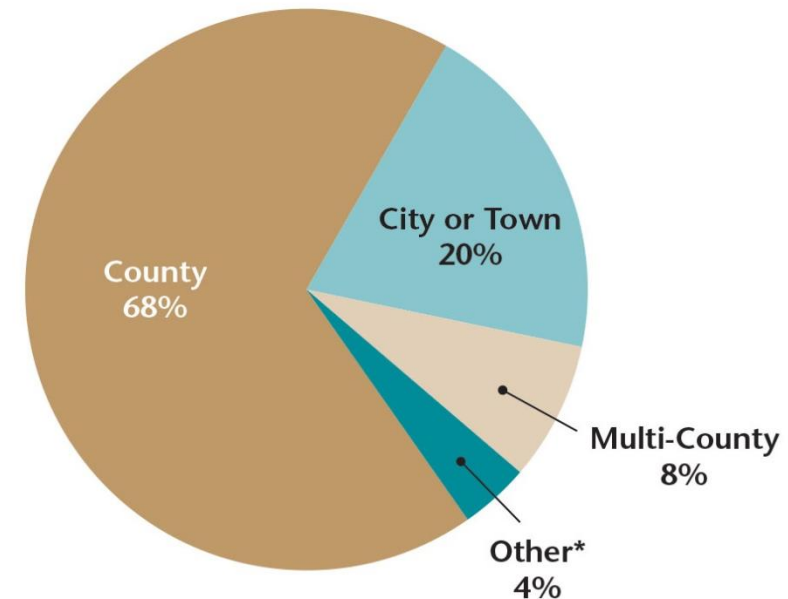
Toolbox icon by Thomas Le Bas from The Noun Project

About Local Health Departments – Who They Serve

LHD Jurisdictions (by Population Served)



Geographic Jurisdictions Served by LHDs



N=2,532

*"Other" category mostly includes LHDs serving multiple cities or towns.

Source: 2013 National Profile of Local Health Departments

NACCHO
National Association of County & City Health Officials

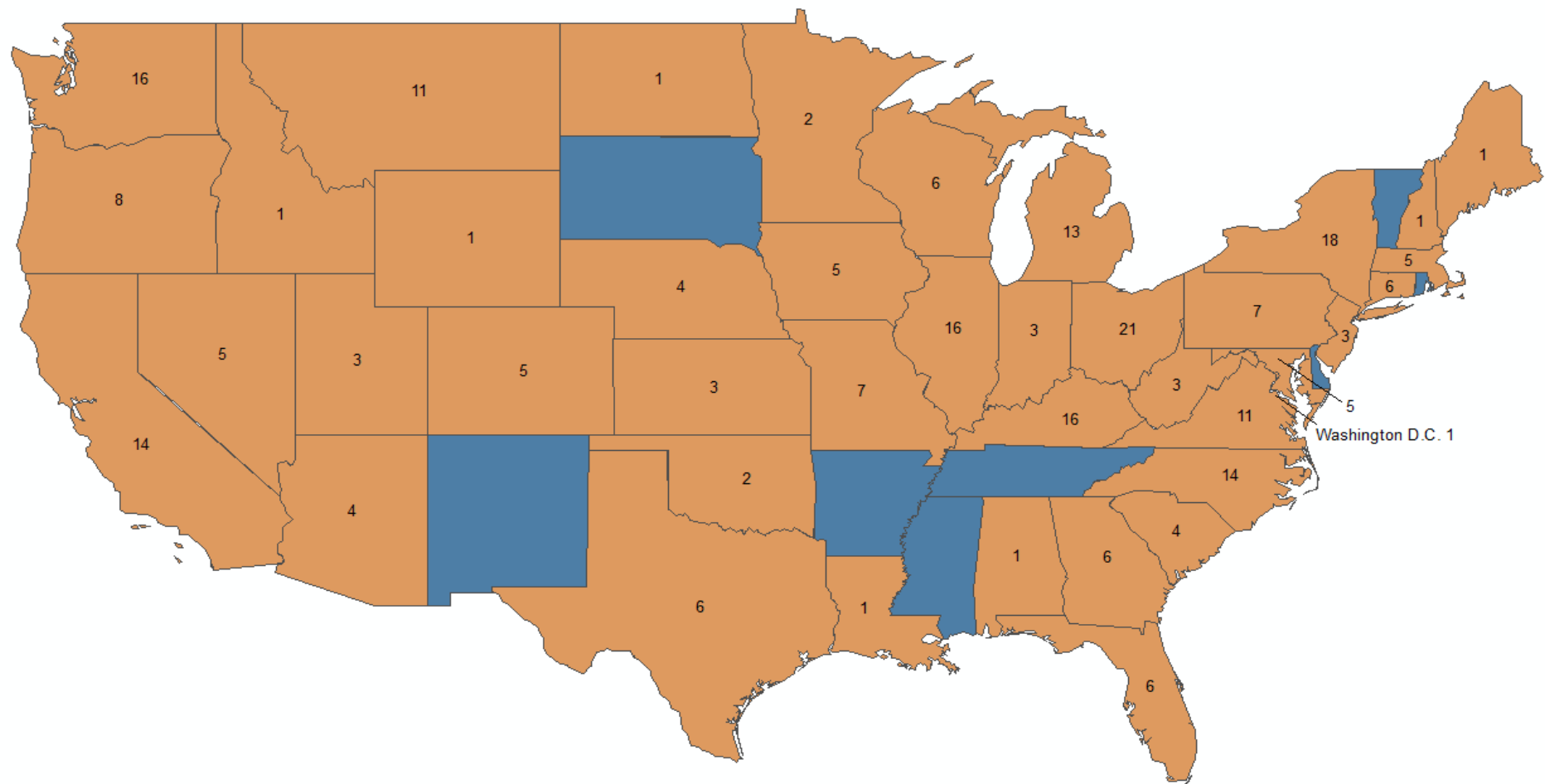


What We Need

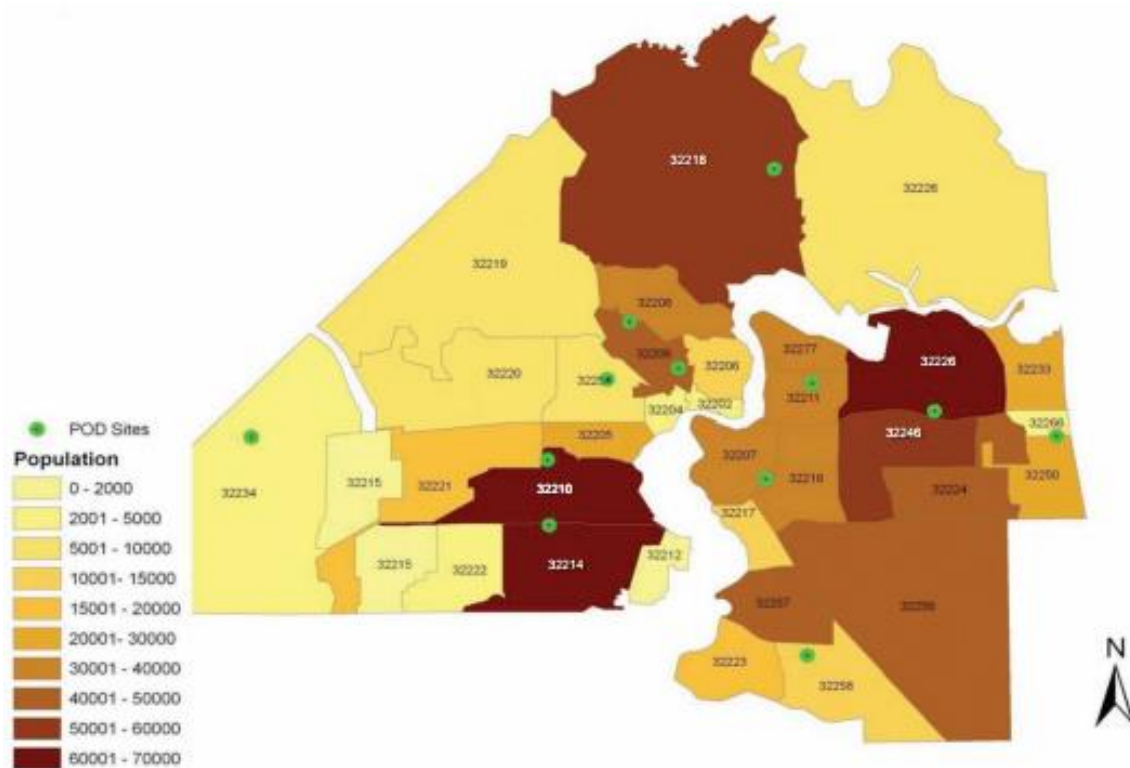
- Geographic query capabilities
- Visual data representation



Pass through funds 2010-2014 # by State



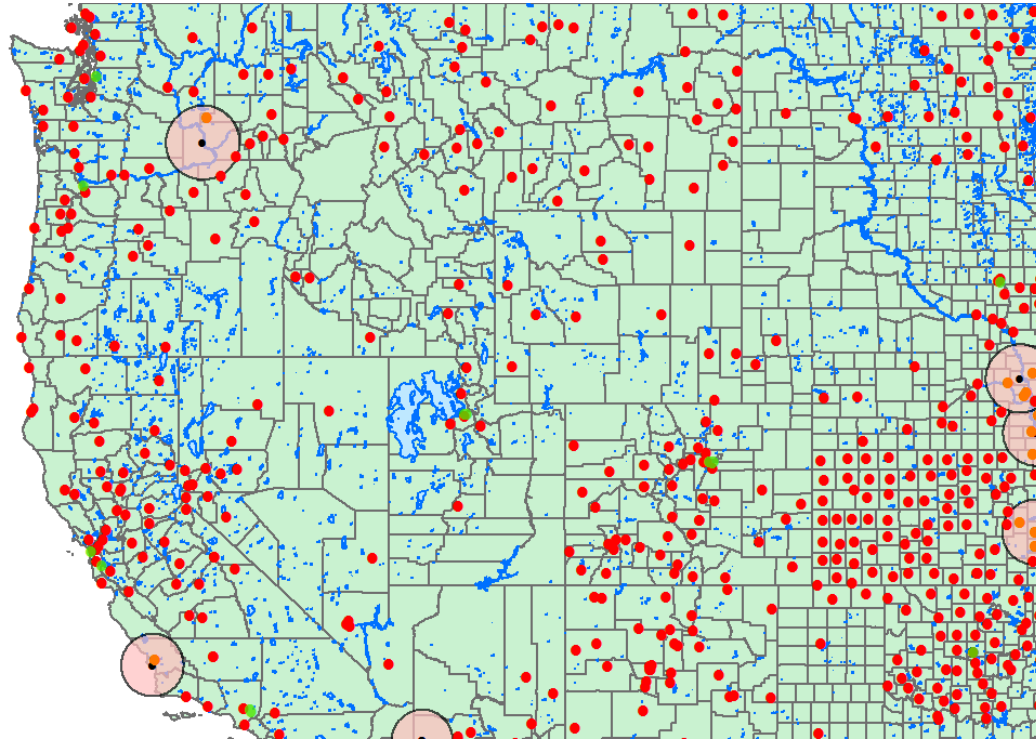
Uses of GIS for Public Health: PODs



NACCHO
National Association of County & City Health Officials

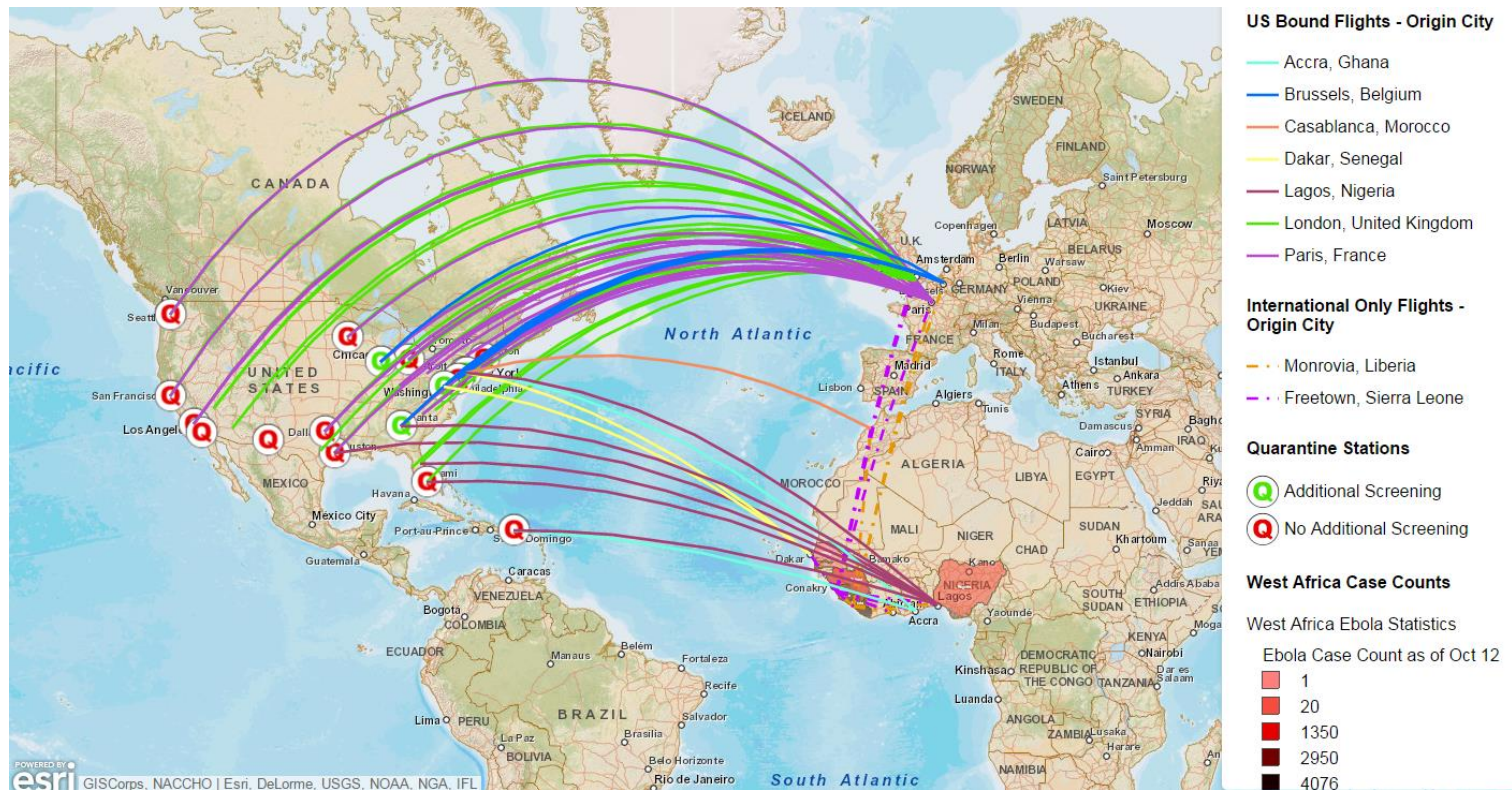


Nuclear Power Plants





Ebola Q & I Considerations



Why GIS?

- Timely Information Transfer
- Visualization
- Enhanced Analysis Capabilities
- Enhanced intervention effectiveness



Conclusions

- Reach & penetration
- Value
- Spatial analysis
- Future: Real time decisions - zoonotic, chronic disease, infectious, vectorborne, food security, community benefit, pass through

