

2013 Esri Mid-Atlantic User Conference

December 10-11 | Baltimore, MD



Portal for ArcGIS: An Introduction

Derek Law
Esri, Redlands

Agenda

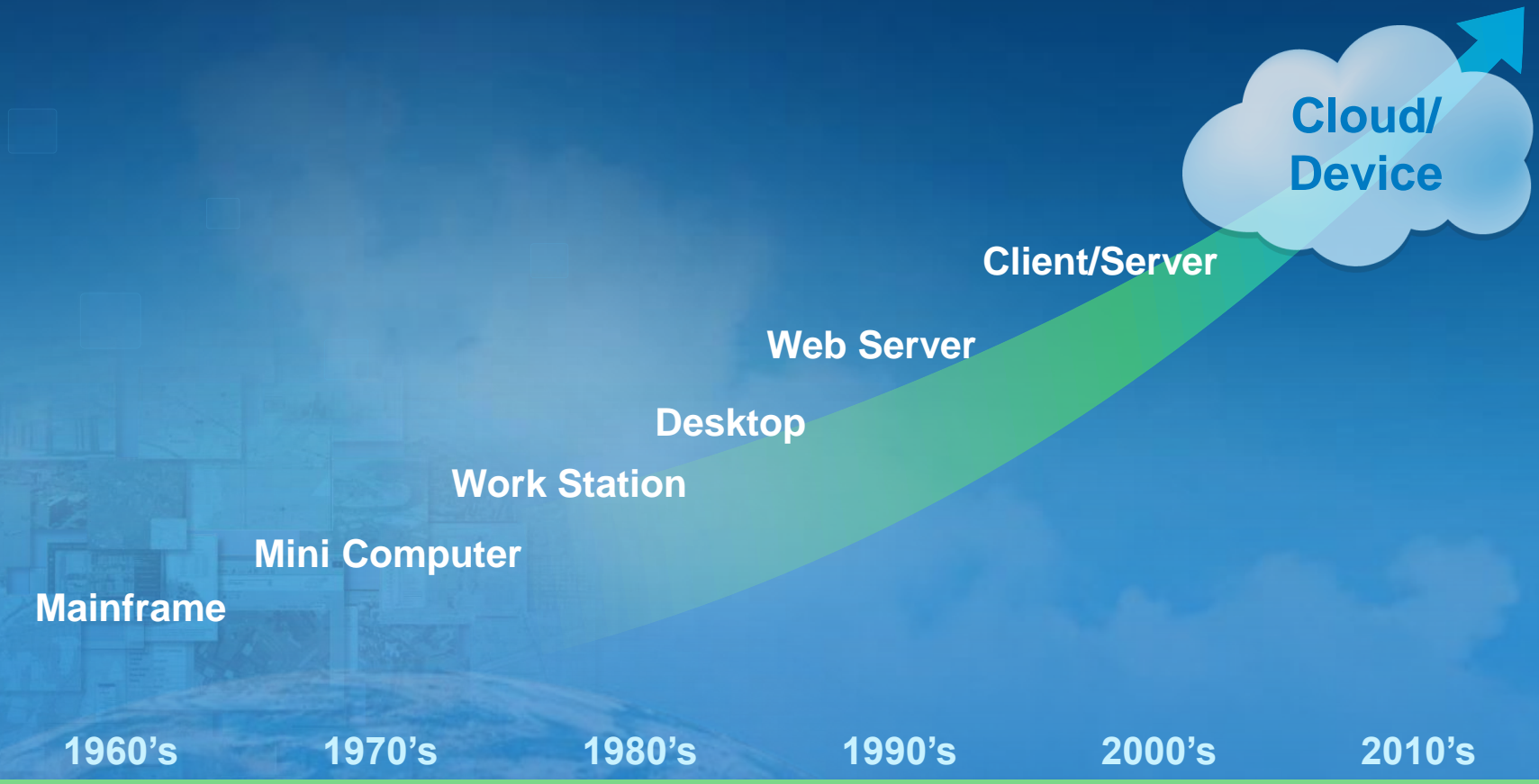
- **Web GIS**
- **Deployment patterns**
- **Portal for ArcGIS overview**
- **Security**
- **Integration with ArcGIS for Server**
- **Implementation patterns**
- **Summary**

GIS is at a Major Turning Point



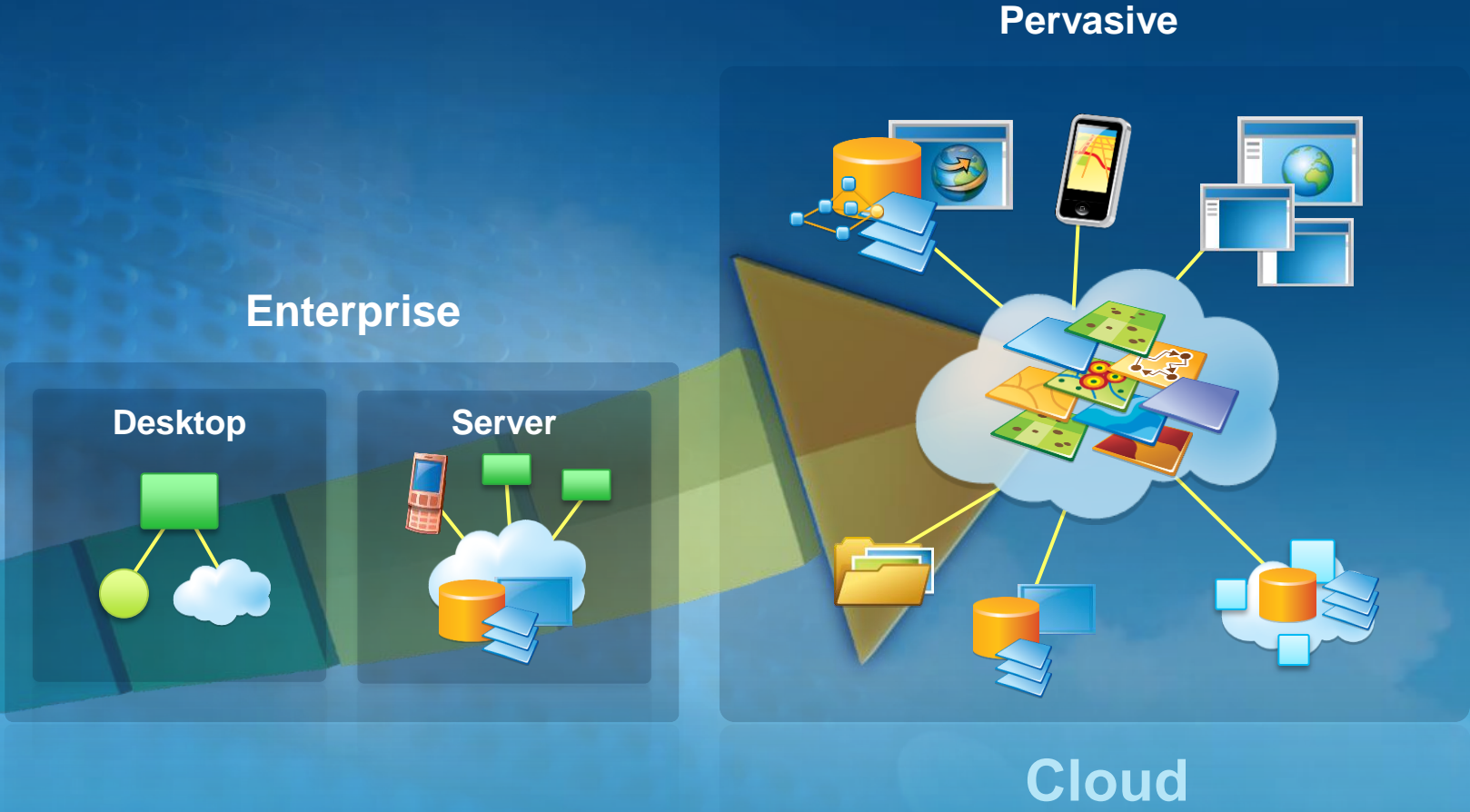
GIS Is Transforming Into Platform

Integrating Software and Services



This New Platform

Connects and Leverages Existing GIS Investments



ArcGIS Is a Platform

Enabling Web GIS Everywhere

Simple
Integrated
Open



*Available in the Cloud . . .
. . . and On-Premises*

Key ArcGIS components for WebGIS



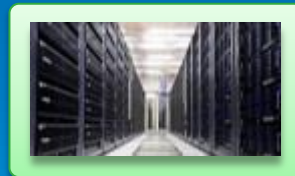
Apps

Information Products
Access Control



portal

Web Services
Data



GIS Servers
Authoring tools



**Ready to use
Content**

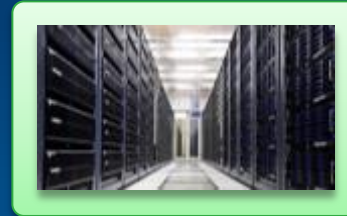
Web GIS Deployment Patterns



Apps



portal



GIS Servers



Ready to use
Content

SaaS

ArcGIS Online
(Portal)

ArcGIS Online
(Hosted Servers)

ArcGIS Online
Services

Software

Portal
for ArcGIS

ArcGIS
Server

ArcGIS Data
Appliance

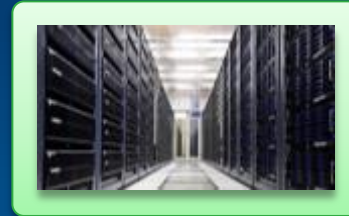
Web GIS Deployment Patterns



Apps



portal



GIS Servers



Ready to use
Content

SaaS

Software

ArcGIS Online
(Portal)

ArcGIS Online
(Hosted Servers)

ArcGIS Online
Services

Portal
for ArcGIS

ArcGIS
Server

ArcGIS Data
Appliance

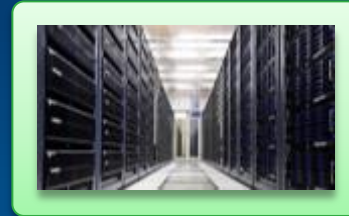
Web GIS Deployment Patterns



Apps



portal



GIS Servers



Ready to use
Content

SaaS

ArcGIS Online
(Portal)

ArcGIS Online
(Hosted Servers)

ArcGIS Online
Services

Software

Portal
for ArcGIS

ArcGIS
Server

ArcGIS Data
Appliance

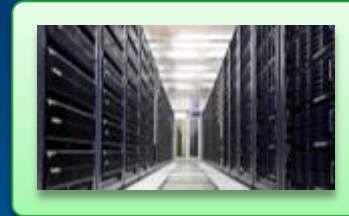
WebGIS Deployment Patterns



Apps



portal



GIS Servers



Ready to use
Content

SaaS

ArcGIS Online
(Portal)

ArcGIS Online
(Hosted Servers)

ArcGIS Online
Services

Software

Portal
for ArcGIS

ArcGIS
Server

ArcGIS Data
Appliance

Portal for ArcGIS

New Extension to ArcGIS 10.2 for Server Advanced

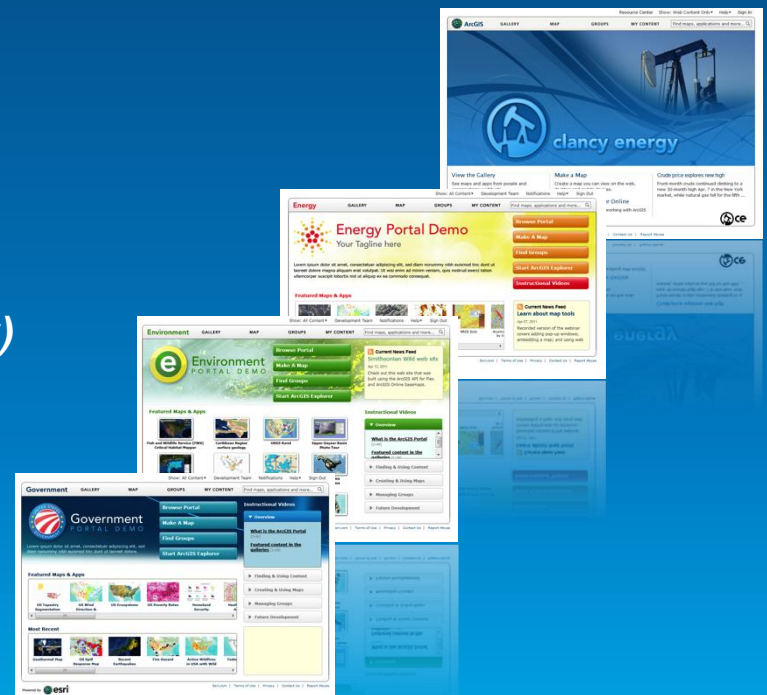


... Implements Web GIS on Premises

Portal for ArcGIS – COTS product at 10.2

The on-premises option

- Map-centric content management system for your GIS assets
- Solution when
 - Additional security demands
 - No public cloud option
- Allows for
 - Enterprise integration (e.g. security)
 - More extensive customization



Portal for ArcGIS

Is it right for me?

- Typical reasons for choosing **Portal for ArcGIS**
 - Have no internet/www connection
 - Have strict SLAs and governance
 - Are not ready for the cloud yet
- Typical reason for choosing **ArcGIS Online**
 - Lower overall cost (faster start, less admin costs)
 - Continuous updates and improvements
 - Elasticity

Portal for ArcGIS Themes

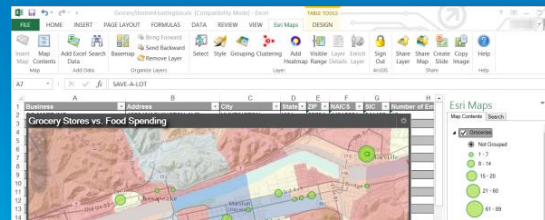
- Empower people to use and create maps
- Organize your maps and apps ... enable discovery
- More apps ... maps everywhere



Collector for ArcGIS



Operations Dashboard for ArcGIS



Esri Maps for Office
Esri Maps for SharePoint



Web Application Templates

Demo

Web GIS On-premises

The screenshot displays the ArcGIS Portal for ArcGIS interface. At the top, there is a navigation bar with links for HOME, GALLERY, MAP, GROUPS, and MY CONTENT. A search bar on the right contains the text "Find maps, applications and more...". The main header area features a world map background and the text "Portal for ArcGIS". Below this, a section titled "Featured Maps and Apps" contains four map thumbnails: "Des Moines", "Florida demographics", "GeologyIsland", and "Japan National Map". Each thumbnail has a corresponding title below it. At the bottom, there is a "Make a Map »" section with a brief description: "Create a map that can be viewed in a browser, desktop or mobile device. Share it on a blog, via email, or embed it in a website."

Resource Center Show: Web Content Only Help Sign In

HOME GALLERY MAP GROUPS MY CONTENT Find maps, applications and more...

Portal for ArcGIS

Featured Maps and Apps

-  Des Moines
-  Florida demographics
-  GeologyIsland
-  Japan National Map

Make a Map »

Create a map that can be viewed in a browser, desktop or mobile device. Share it on a blog, via email, or embed it in a website.

Supported Operating Systems and hardware requirements

- View [help documentation](#)

Portal for ArcGIS system requirements


[Portal](#) » [Portal for ArcGIS Administrator Guide](#) » [Getting started](#) » [Installing Portal for ArcGIS](#)

The latest system specifications, including hardware requirements and supported operating systems required to install and use Portal for ArcGIS, are available on the [ArcGIS Resources website](#).

Supported operating systems

The Portal for ArcGIS setup will only proceed if the operating system is 64-bit; 32-bit operating systems are not supported. The operating systems listed below satisfy the minimum requirements:

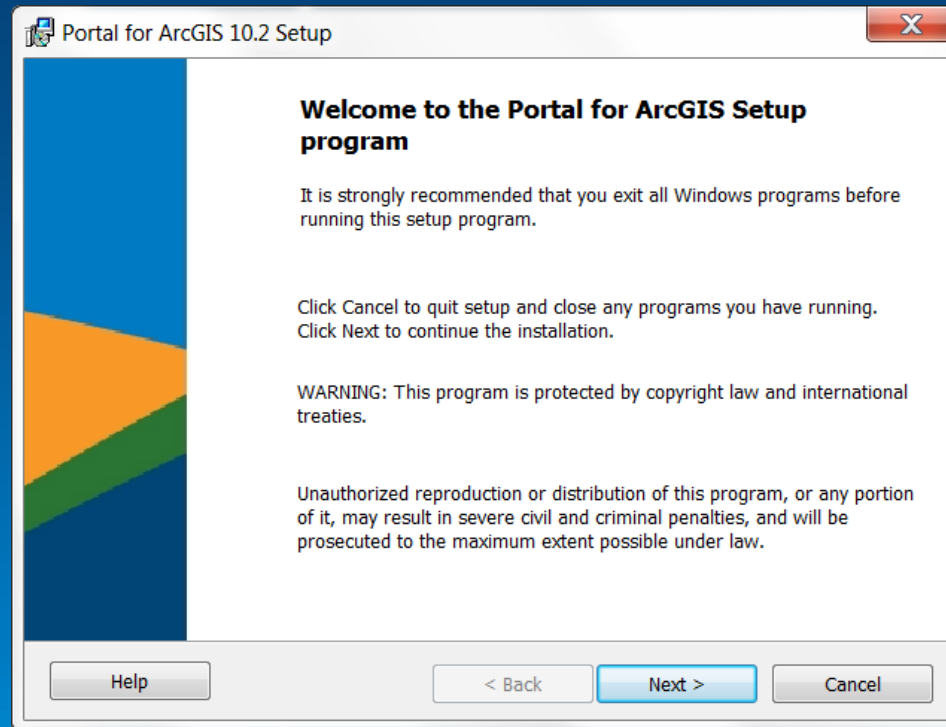
- Windows Server 2012 Standard and Datacenter
- Windows Server 2008 R2 Standard, Enterprise, and Datacenter (maximum version supported is SP1)
- Windows Server 2008 Standard, Enterprise, and Datacenter (maximum version supported is SP2)
- Windows 8 Professional and Enterprise
- Windows 7 Ultimate, Enterprise, Professional, Home Premium
- Windows Vista Service Pack 2 Ultimate, Enterprise, Business, and Home

 **Note:** Windows 8, Windows 7, and Windows Vista are supported for basic testing and application development use only. They are not recommended for deployment in a production environment.

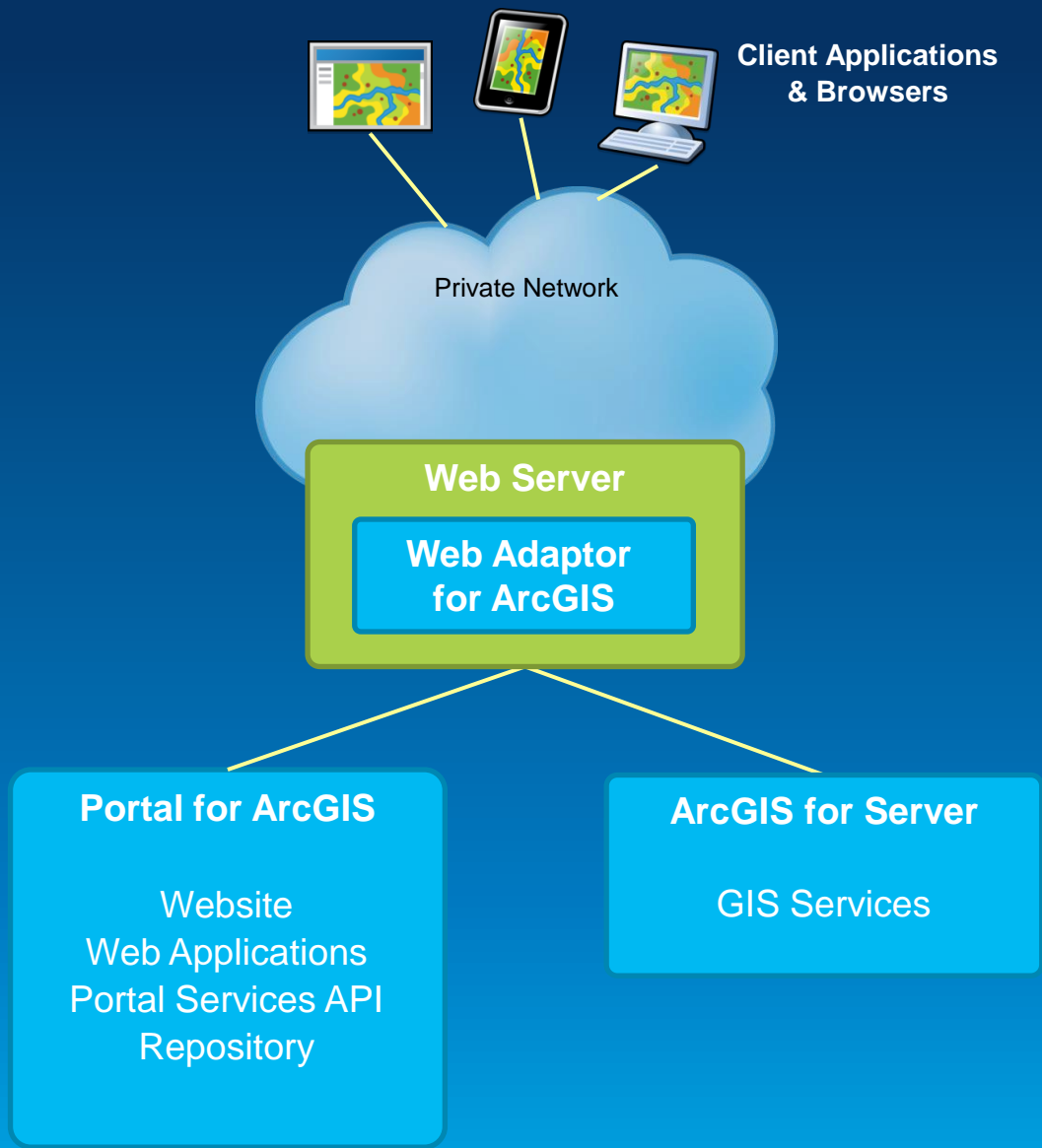
Hardware requirements

- Processor: 4 cores for 100 concurrent users
- Memory/RAM: 4 GB or more

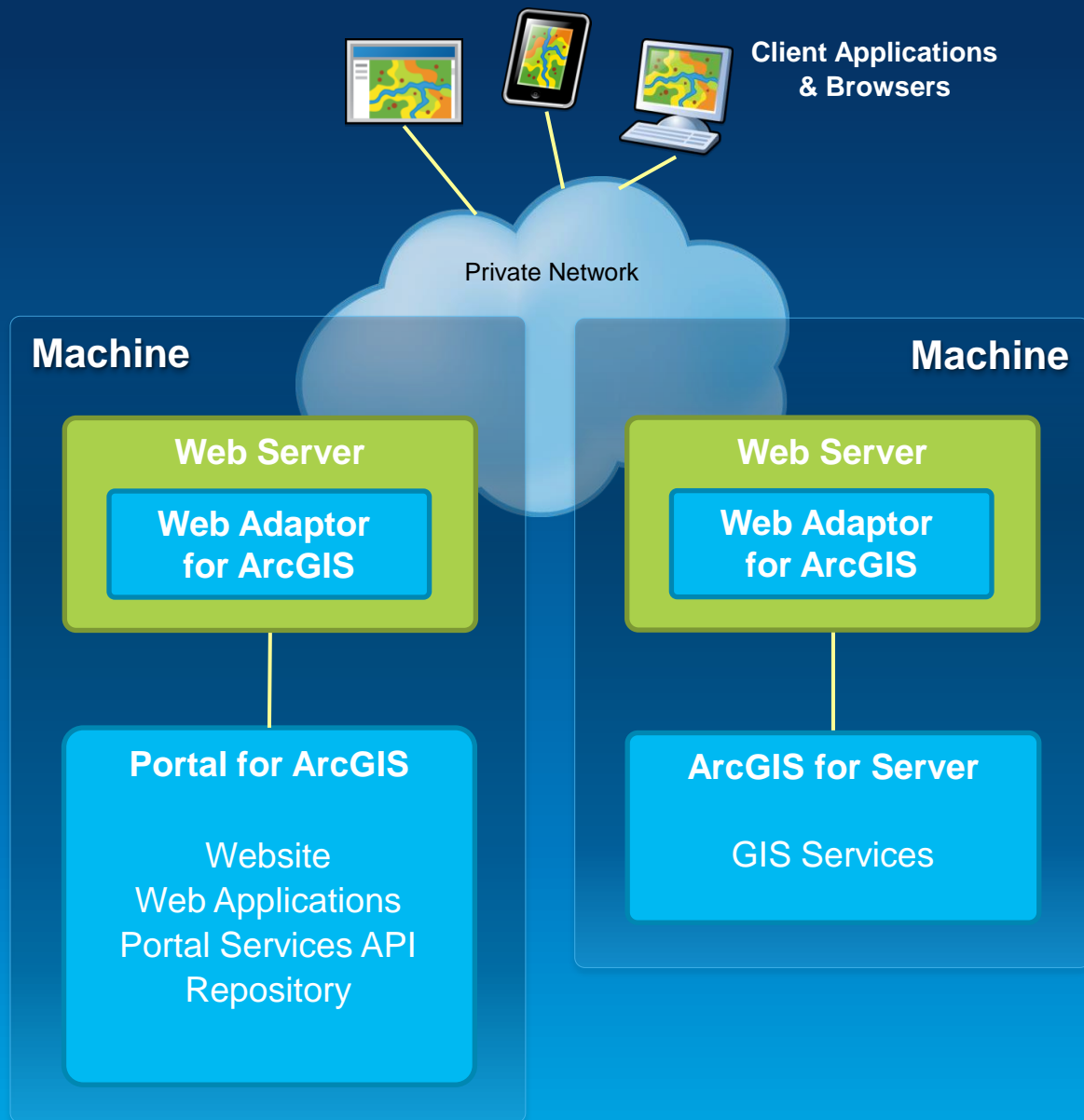
Installing Portal for ArcGIS



... runs on same platforms as ArcGIS for Server







Security

- **Authentication**
 - Supports web tier auth, can provide SSO (e.g. IWA, PKI)
 - Supports SSO to your ArcGIS Servers
- **Users, Groups, and Roles**

Users

- Built-in
- Enterprise (*LDAP, AD*)

Groups

- Built-in

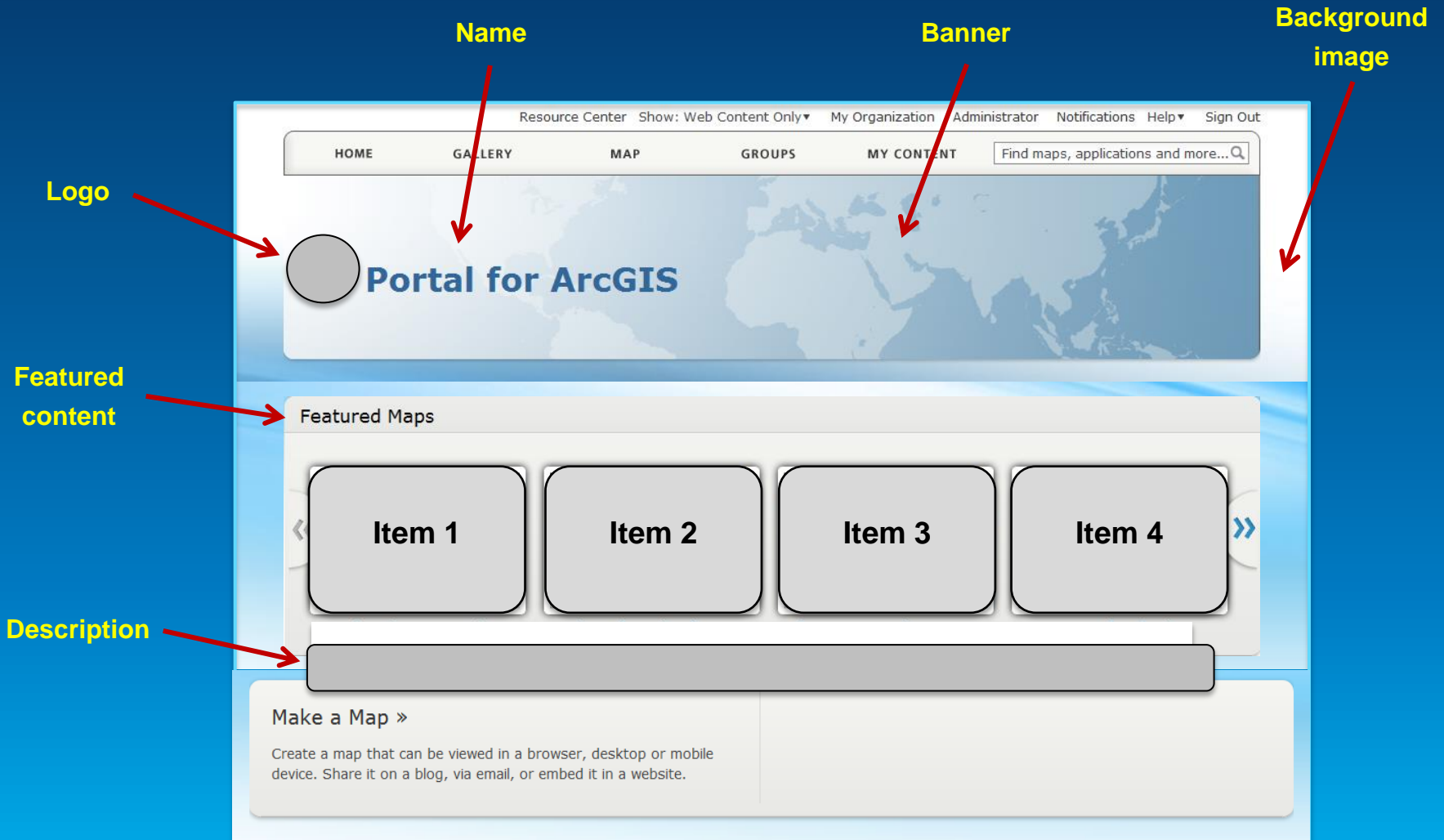
Roles

- *Anonymous*
- User
- Publisher
- Administrator

Define Groups that Mirror the Organization

- Organize groups by
 - **Theme or Initiative**
 - Common and supportive content
 - **Functional group/department**
 - Based on organization's business units
 - **Project**
 - Based on specific projects/tasks
 - **Ad-hoc**
 - Prototyping, non-permanent temp projects, staging

Portal home page - Configurable



Basemaps & Utility Services

- Important part of Web GIS
- Can be hosted:
 - Online (*by Esri*)
 - On-Premises (*by you*)
 - Both



Demo

Configuring Portal for ArcGIS

The screenshot displays the ArcGIS Portal configuration interface. At the top, there is a navigation bar with the following items: Resource Center, Show: Web Content Only, My Organization, Administrator, Notifications, Help, and Sign Out. Below this is a secondary navigation bar with tabs for HOME, GALLERY, MAP, GROUPS, and MY CONTENT, along with a search box containing the text "Find maps, applications and more...".

Below the navigation bar are "Save" and "Cancel" buttons. A left-hand sidebar contains a list of configuration categories: General (highlighted), Home Page, Gallery, Map, Item Details, Groups, Utility Services, Servers, and Security.

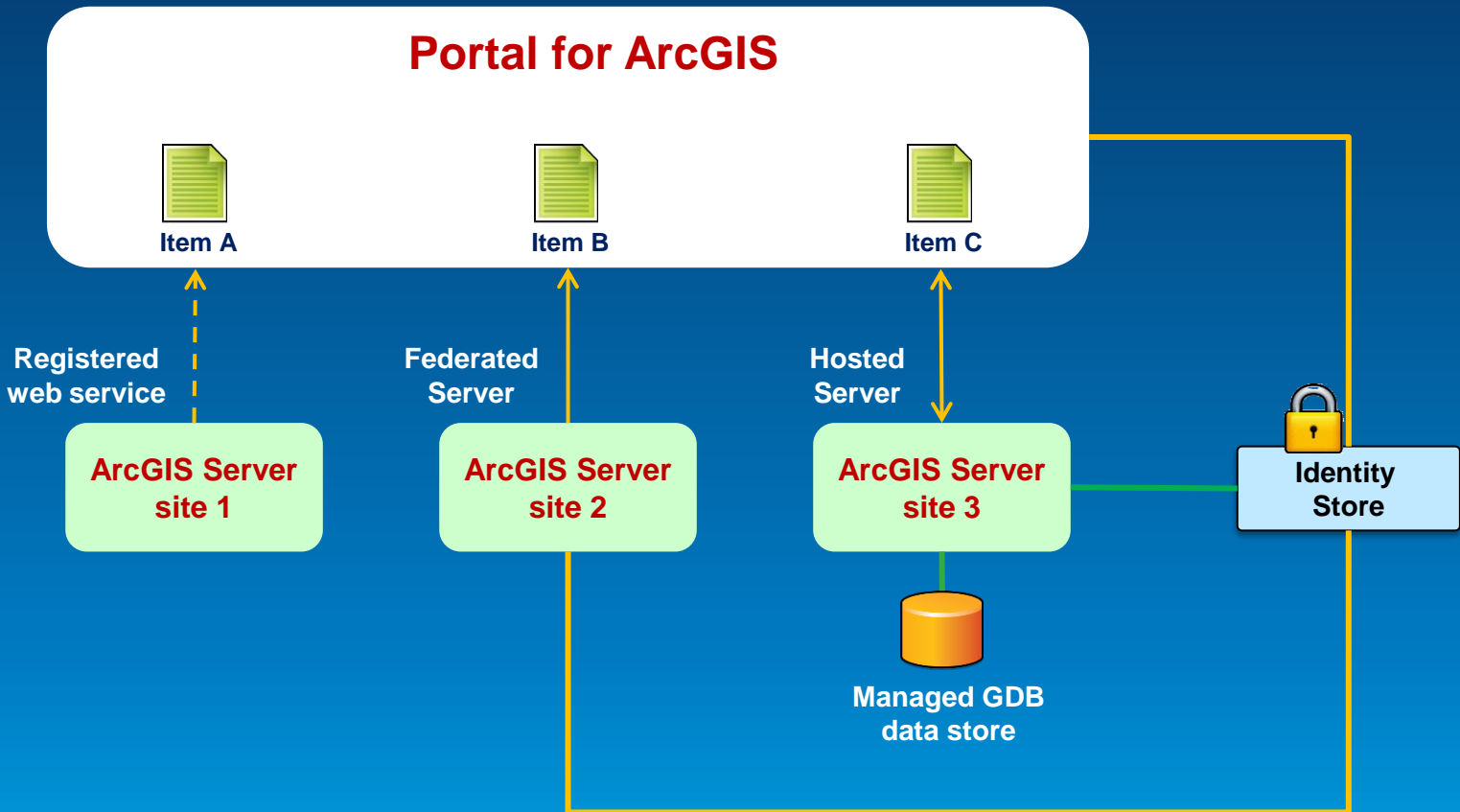
The main content area is titled "General" and contains the following sections:

- General:** A text area for representing and describing the portal, with instructions to set the default language, basemaps, and units.
- Logo and Name:** A section for setting the portal's name and logo. The "Name" field contains "Portal for ArcGIS". A thumbnail image is shown with a "Click to change thumbnail" instruction.
- Description:** A section for entering a description for the organization, featuring a rich text editor with a toolbar and a text area containing the placeholder "Enter a description for your organization".

Portal + ArcGIS for Server

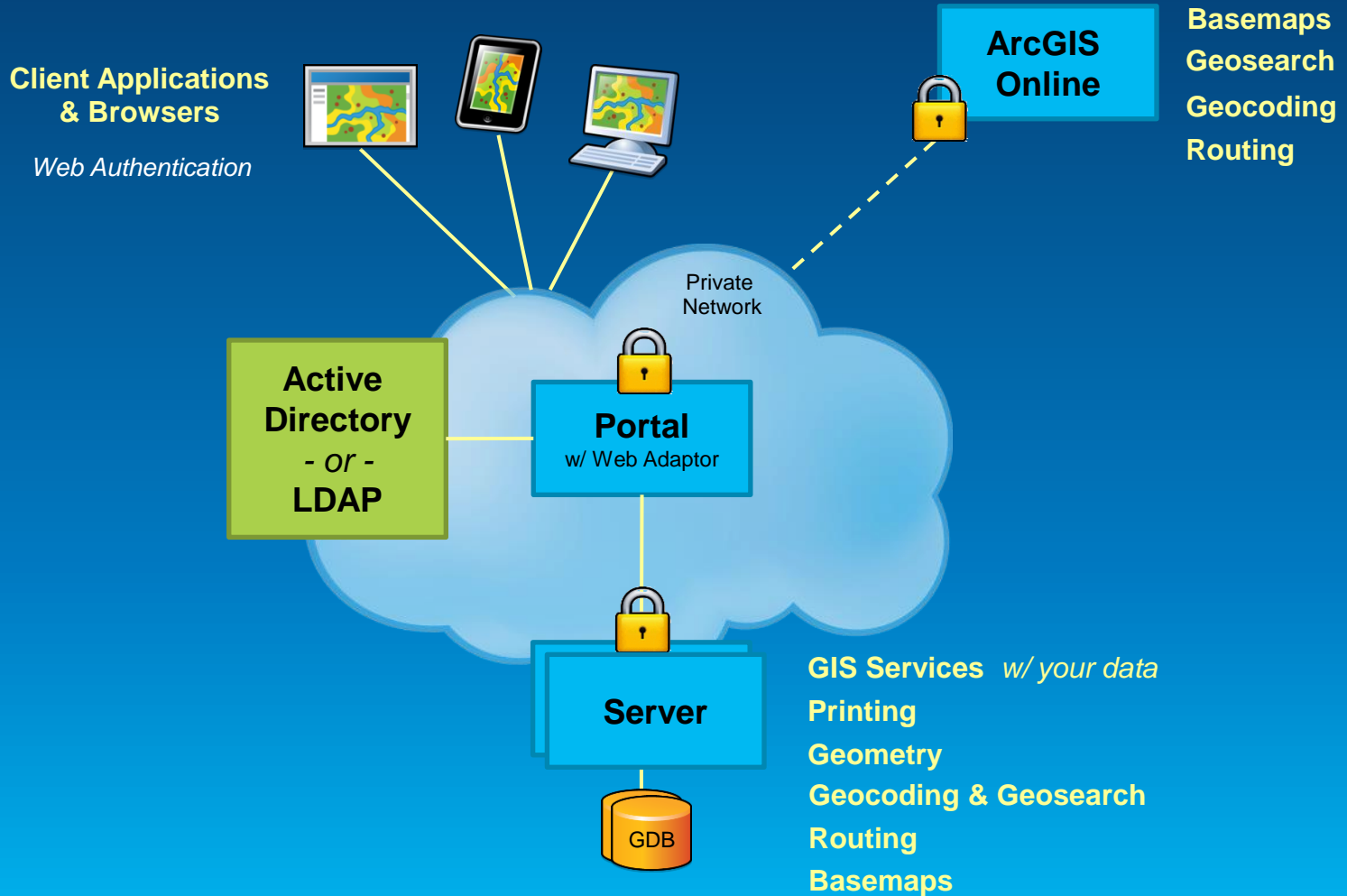
- 1. Portal w/ registered services (available at 10.1)**
 - Managed and secures via Server
- 2. Portal w/ registered and federated services**
 - Managed via Server, secured with Portal (SSO with Portal)
- 3. Portal w/ registered, federated, and hosted services**
 - Managed and secured via Portal (Managed GDB)

Implementation Patterns



Implementation Patterns

Online - On-premises - Hybrid



Implementing Web GIS

Typical activities

- **Assessment & planning**
- **Installation & configuration**
- **Security integration**
- **Deployment** (*staging, production*)
- **End user engagement, socialization**
- **IT training & support planning**
- **Operations, maintenance, and support**
- **Designing & building information products**

Implementation Tips

Beyond installation

- **Stay focused on the information products**
- **Embrace the idea of maps everywhere**
- **Model Portal after your structure & workflows**
- **Consider the Web GIS Launch Kits**

Portal for ArcGIS - Summary

- **Map-centric content management system**
- **Implements “Web GIS” on-premises**
- **Solution when**
 - **Additional security demands**
 - **No public cloud option**

- **Extension of ArcGIS 10.2 for Server Advanced**





Understanding our world.

Copyright © 2013 All Rights Reserved