

2013 Esri Mid-Atlantic User Conference

December 10-11 | Baltimore, MD



Collector for ArcGIS Operations Dashboard

Tom Schwartzman, Esri

2013 Esri Mid-Atlantic User Conference

December 10-11 | Baltimore, MD



Collector for ArcGIS

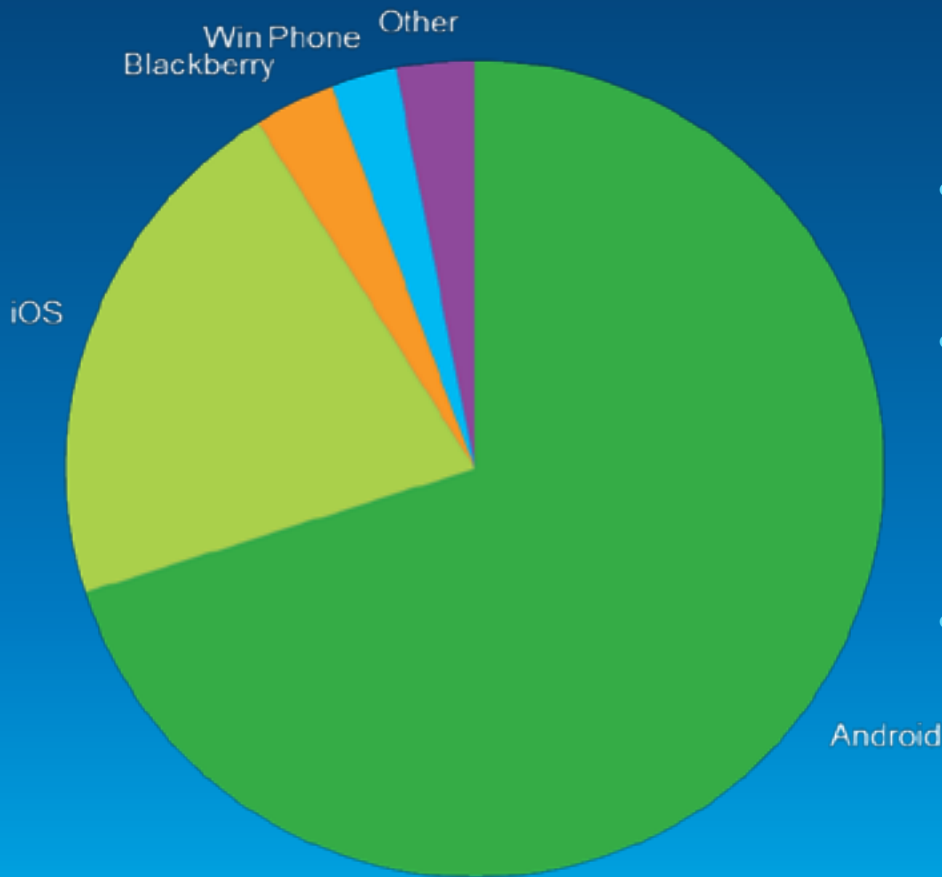
Tom Schwartzman, Esri



Welcome

Going Mobile

4Q12 Global Market Share



- **722 million smartphones were shipped in 2012**
- **Becoming pervasive and common place for both the workforce and consumer space**
- **Unprecedented opportunities**

ArcGIS

What is Collector for ArcGIS?



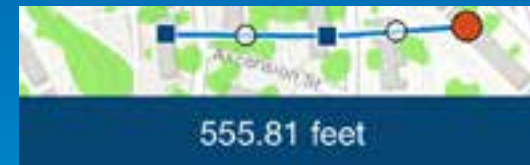
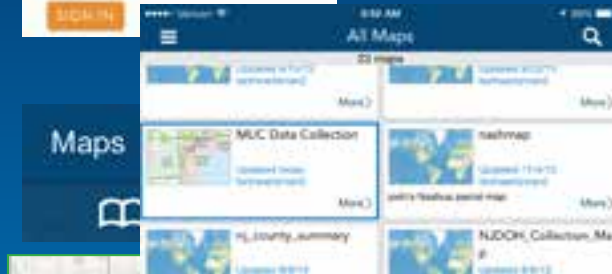
Collector for ArcGIS

- Available on iPhone and Android phones
- Targets field data collection
- Free to download and use
- Integrated into the ArcGIS platform
- Configurable using ArcGIS Online and Portal for ArcGIS*



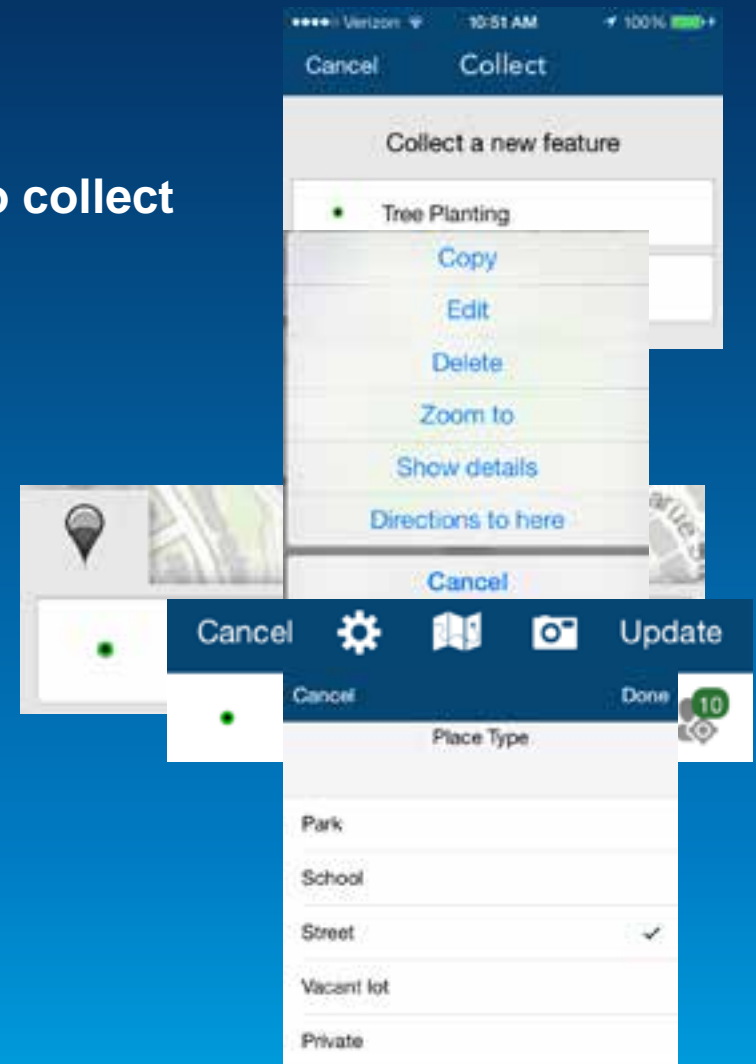
Getting started with Collector

- **Logging in (User Identity)**
 - Required for use
 - Find maps shared for collection
- **Finding your work location**
 - Use GPS to find where you are
 - Search Places and Addresses
 - Get directions to navigate yourself
- **Exploring the map**
 - Tap on the map to learn more
 - Measure distances and area
 - Manage layers and basemaps



Collecting and updating data

- **Choosing what you collect**
 - Tap Collect and choose what you want to collect
- **Choosing what you update**
 - Tap on a feature and then edit it
- **Set the location**
 - Use your current location
 - Using the map
- **Complete the form**
 - Tap a field and set its value
 - Tap the camera and take a photo/video



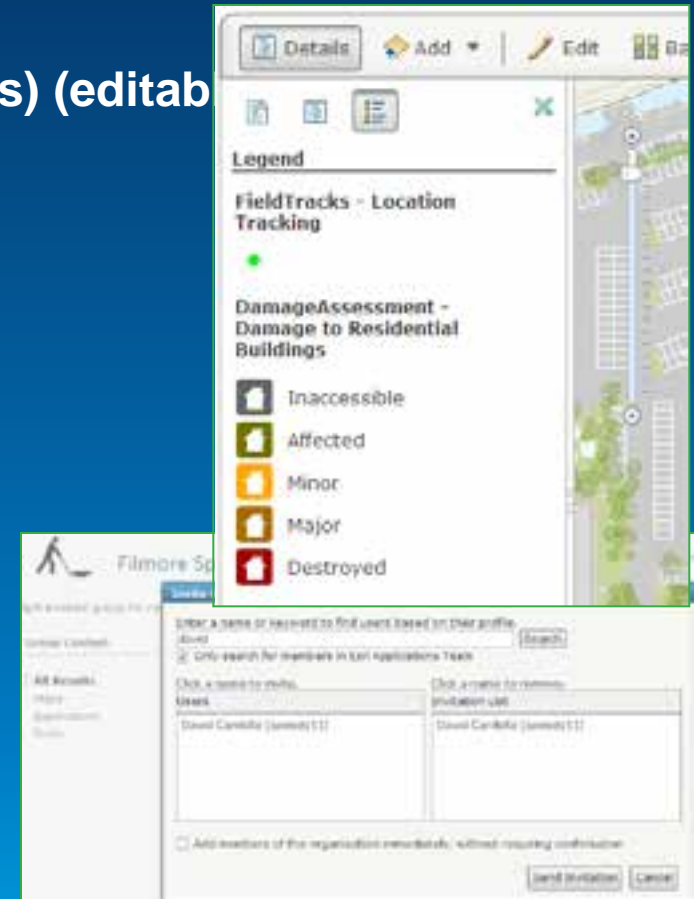
ArcGIS

Creating a map for data collection



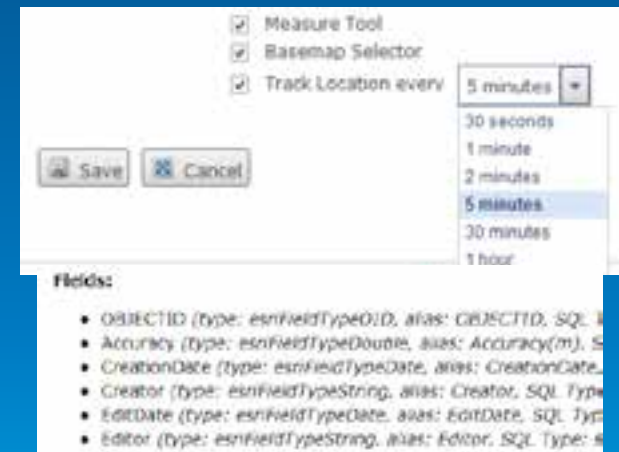
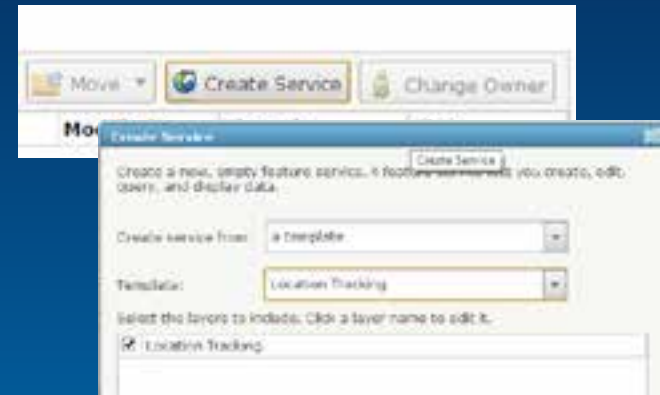
Maps for data collection

- A web map:
 - Point, line or polygon feature service layer(s) (editable)
 - Location Tracking layer (optional)
 - Application settings
- Share using groups
 - Create Named Users for each field worker
 - Invite field workers to groups
 - Share maps into groups



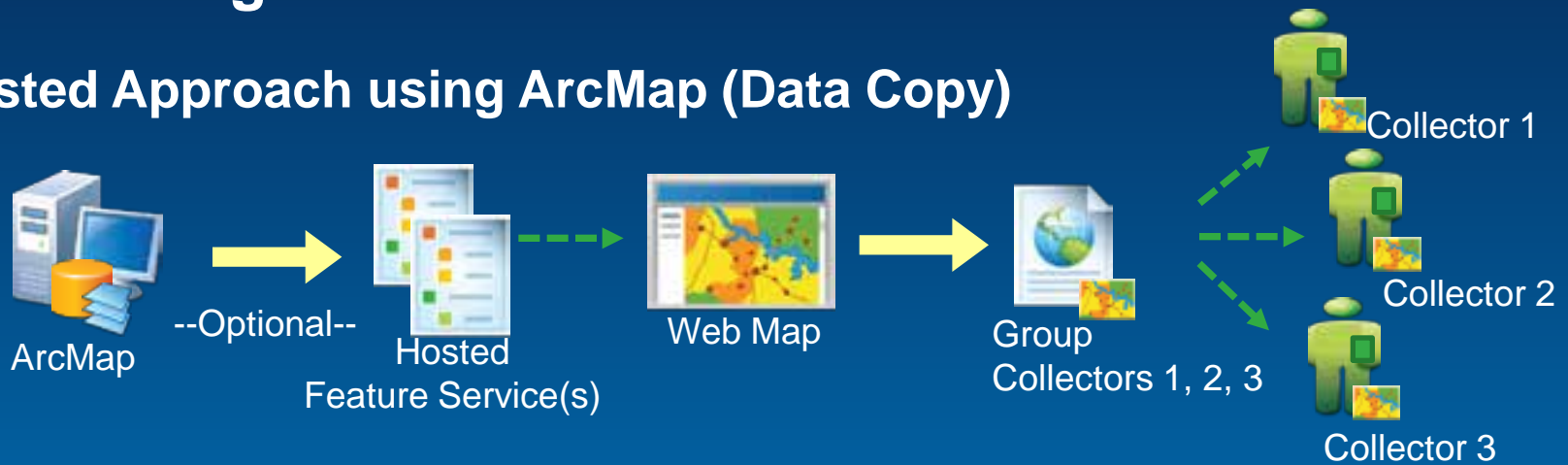
Location Tracking Service

- Hosted Feature Service only!
- Create one or more per field team
- Add to web map and configure capture interval
- Schema automatically captures:
 - Accuracy – GPS accuracy in meters
 - Creator – username for named user account
 - Creation Date – Date/Time at point of creation

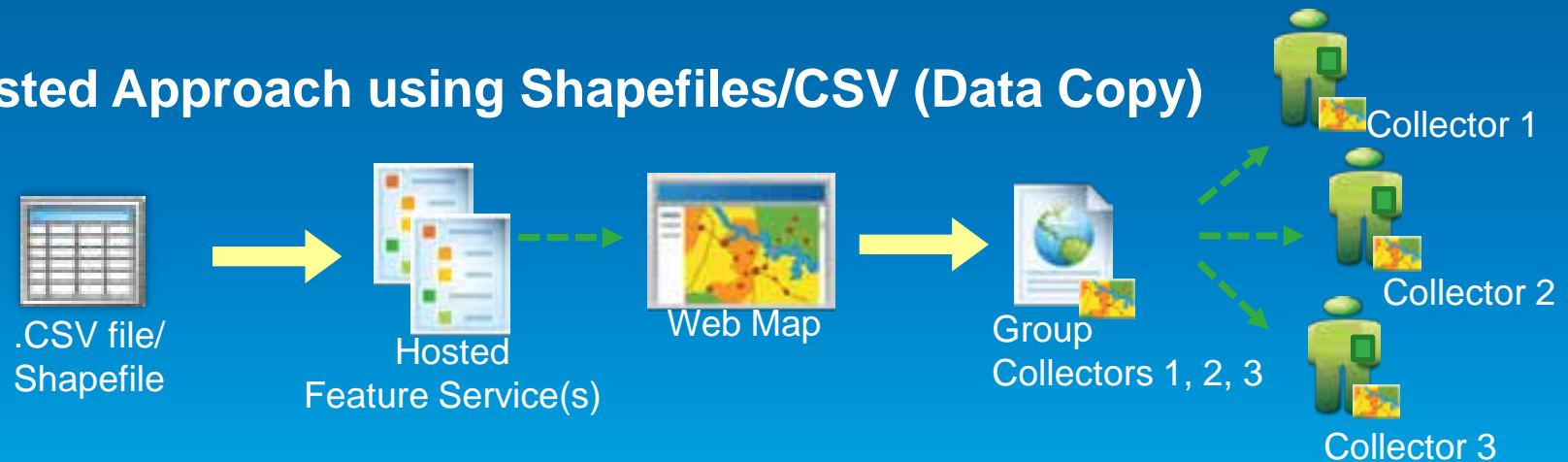


Publishing Workflows

Hosted Approach using ArcMap (Data Copy)

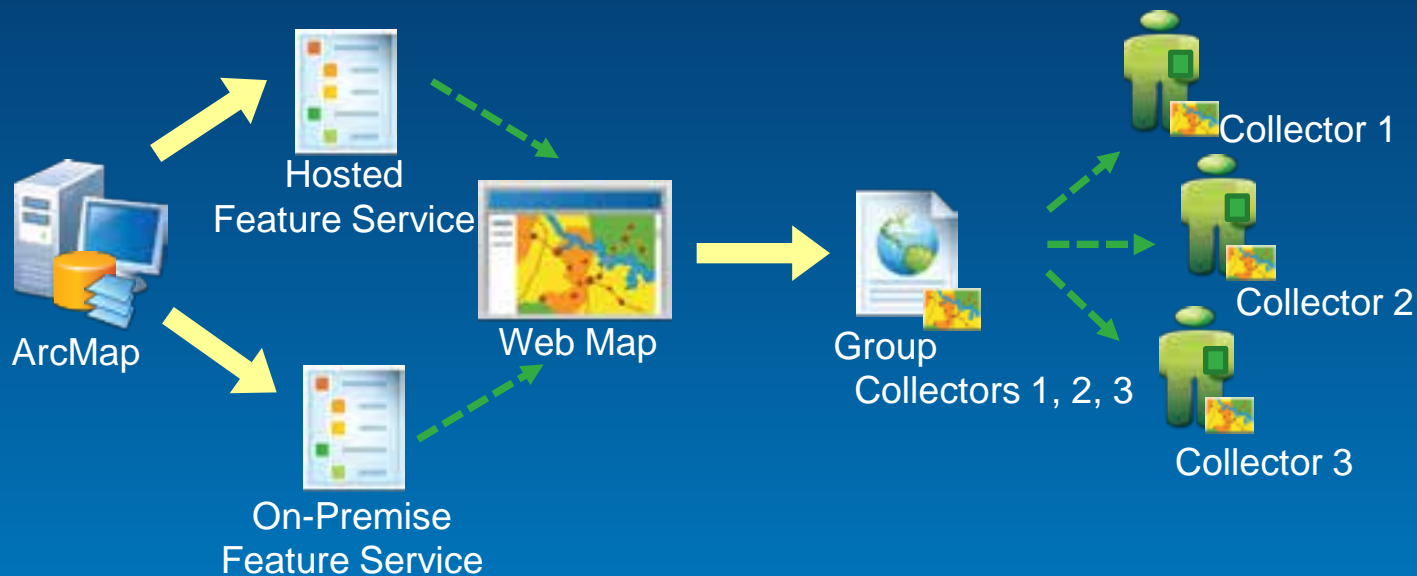


Hosted Approach using Shapefiles/CSV (Data Copy)



Publishing Workflows

Hybrid Approach (Data Reference)



Demo

2013 Esri Mid-Atlantic User Conference

December 10-11 | Baltimore, MD



Operations Dashboard for ArcGIS

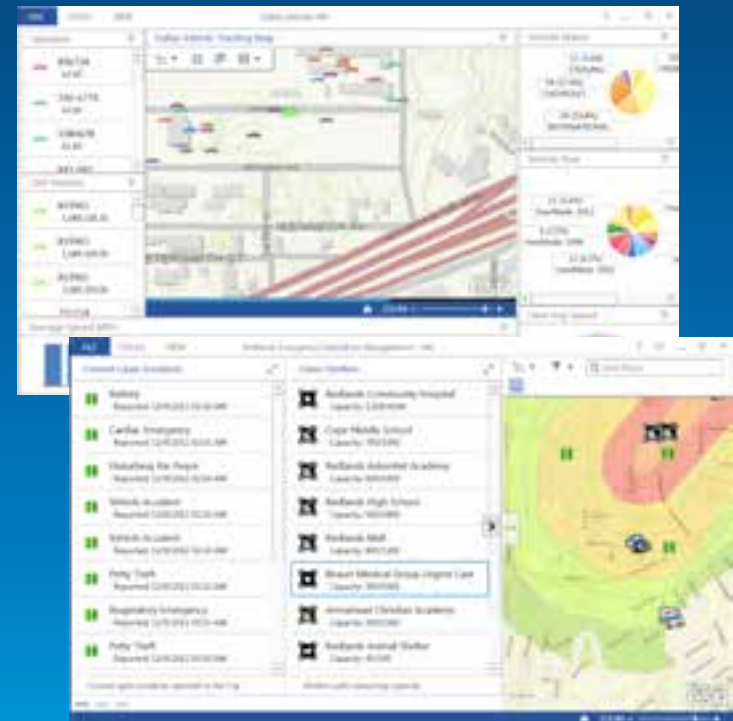
Tom Schwartzman, Esri

Operations Dashboard for ArcGIS

- Monitor, track and respond to operations and events
- Connect to Dynamic or Static data
- Manage Multiple views
- Laptops and touch screen devices

Available with:

- ArcGIS Online Subscriptions
- Portal for ArcGIS 10.2
- Extensible using:
ArcGIS Runtime SDK for WPF



Available on Windows and Windows tablets

Demo

Using Operation Views

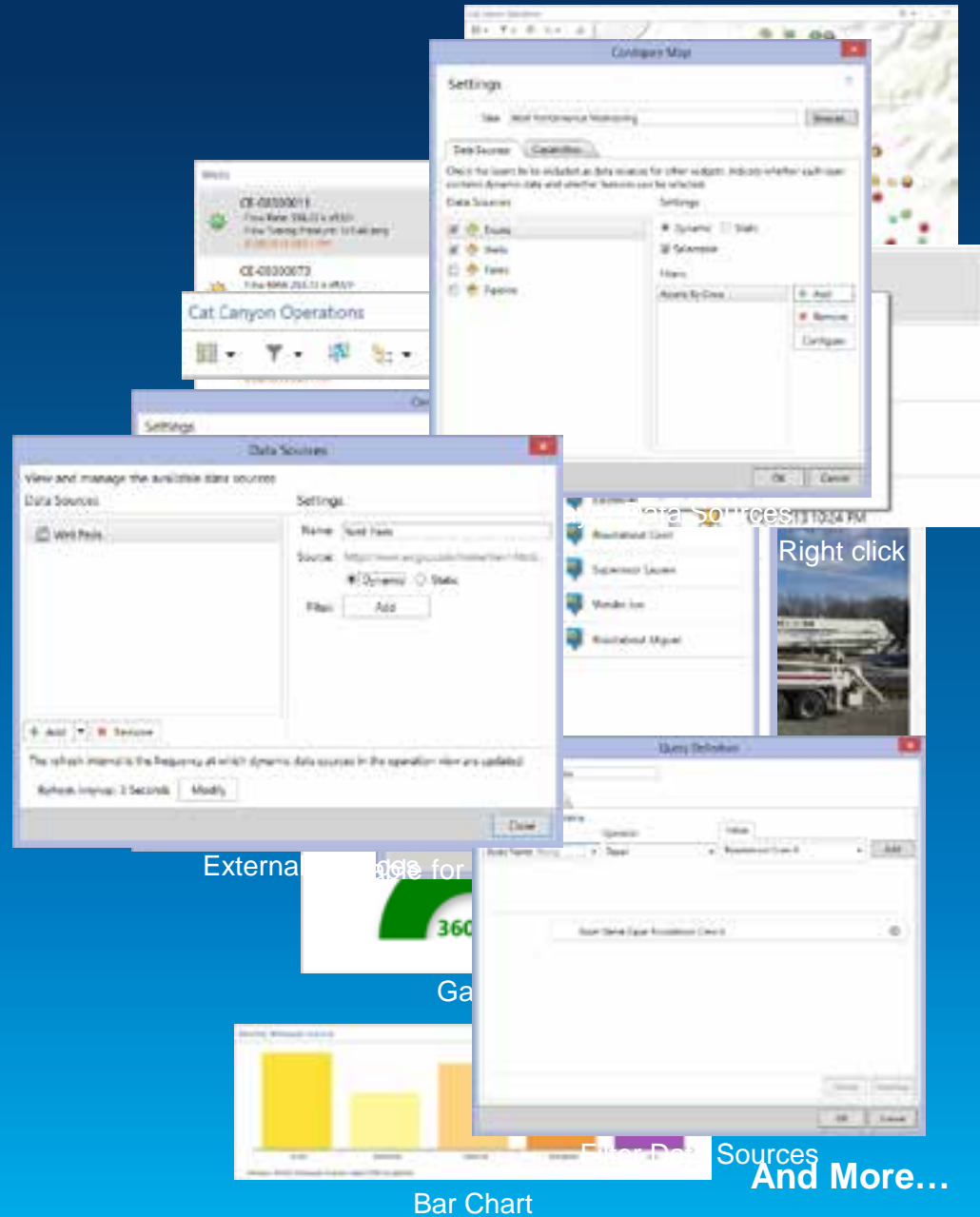
- Operation Views are role-based
- Widgets are dynamic and interactive
- Map provides spatial context



Creating and Sharing Operation Views

Operation Views

- 2 types of views:
 - Single Monitor
 - Multiple Monitor
- View contains:
 - Widgets
 - Map Tools
 - Feature Actions
 - Data Sources



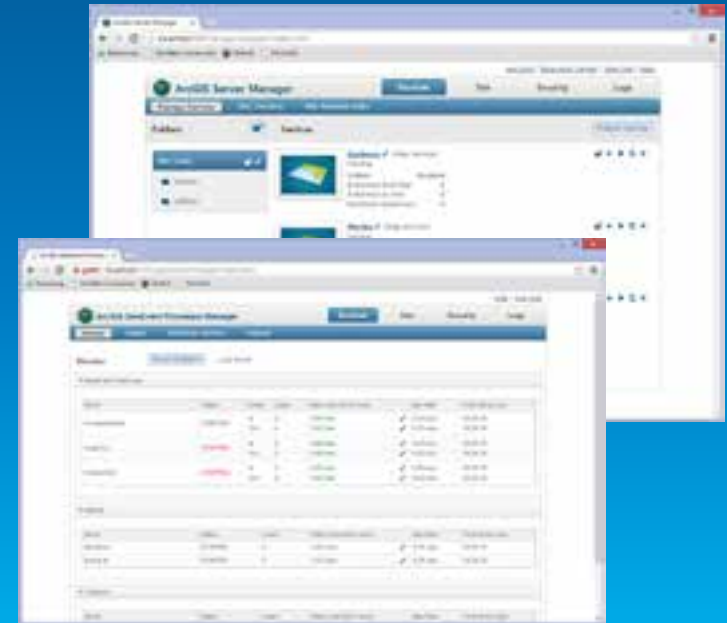
Real-time Data Sources and Challenges

- Sources of real-time data include:
 - Vessels (AIS), Vehicles (AVL)
 - SCADA
 - Weather
 - People
 - Social Media
- Challenges
 - How do I connect it to my apps?
 - How can I process/analyze it?
 - How do I make it available to others?



ArcGIS Server – GeoEvent Processor Extension

- **Optional Extension to ArcGIS Server 10.2 (Standard and Advanced)**
- **Media is included with the ArcGIS for Server media**
 - Stand alone setup at 10.2
- **Works with Portal for ArcGIS and ArcGIS Online subscriptions**
- **Includes an SDK:**
 - Write your own connectors
 - Write your own processors

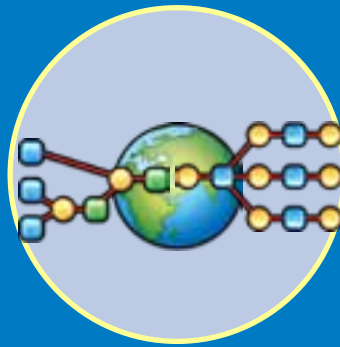


Real-Time data + GeoEvent Processor = Real-time ArcGIS



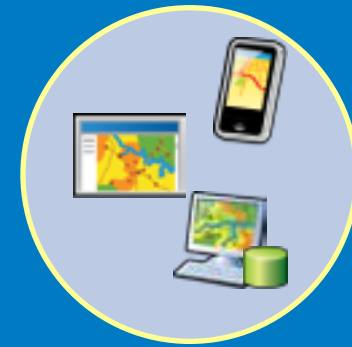
Receive real-time data

Input Connector



Process and Analyze Data

Processor



Output alerts and features

Output Connector

New in November Release...

- Support for enterprise logins.
- Support for Portal for ArcGIS.
- Enhanced list and gauge widgets.
- Pop-up windows include images and charts.
- Improved proxy support.
- Support for local time.
- Improved filtering on time and dates.
- Uses ArcGIS Runtime SDK 10.2 for WPF.
- Add-ins can be developed using ArcGIS Runtime SDK 10.2 for WPF.
- Localization in 23 languages



Thank You to Our Platinum Sponsors

Cityworks[®]



Thank You to Our Gold Sponsors





Understanding our world.