

Historical GIS in DC



Brian Kraft



Building Permits Database

3106	0118	50 Seaton Place NW	17 x 34	2 story	brick	dwelling
3106	0117	52 Seaton Place NW	17 x 34	2 story	brick	dwelling

Notes

5/9/1904 *Permit #* 1715 *Qty* 8 \$32,000 *Owner* Wardman, Harry

Bldr Wardman, Harry

Arch Grimm, N. R.

2578	0029	2501 17th Street NW	19 x 26	2 story	brick	apartment
2576	0030	2503 17th Street NW	19 x 26	2 story	brick	apartment
2576	0031	2505 17th Street NW	19 x 26	2 story	brick	apartment
2576	0032	2507 17th Street NW	19 x 26	2 story	brick	apartment
2576	0033	2509 17th Street NW	19 x 26	2 story	brick	apartment
2576	0034	2511 17th Street NW	19 x 26	2 story	brick	apartment
2576	0035	2513 17th Street NW	19 x 26	2 story	brick	apartment
2576	0036	2515 17th Street NW	19 x 26	2 story	brick	apartment

Notes

5/14/1904 *Permit #* 1745 *Qty* 6 \$18,000 *Owner* Wardman, Harry

Bldr Wardman, Harry

Arch Grimm, N. R.

3110	0114	63 Seaton Place NW	17 x 34	2 story	brick	dwelling
3110	0115	65 Seaton Place NW	17 x 34	2 story	brick	dwelling
3110	0116	67 Seaton Place NW	17 x 34	2 story	brick	dwelling
3110	0117	69 Seaton Place NW	17 x 34	2 story	brick	dwelling

Work Map – Dupont Circle



Work Map – Dupont Circle



Work Map - Downtown



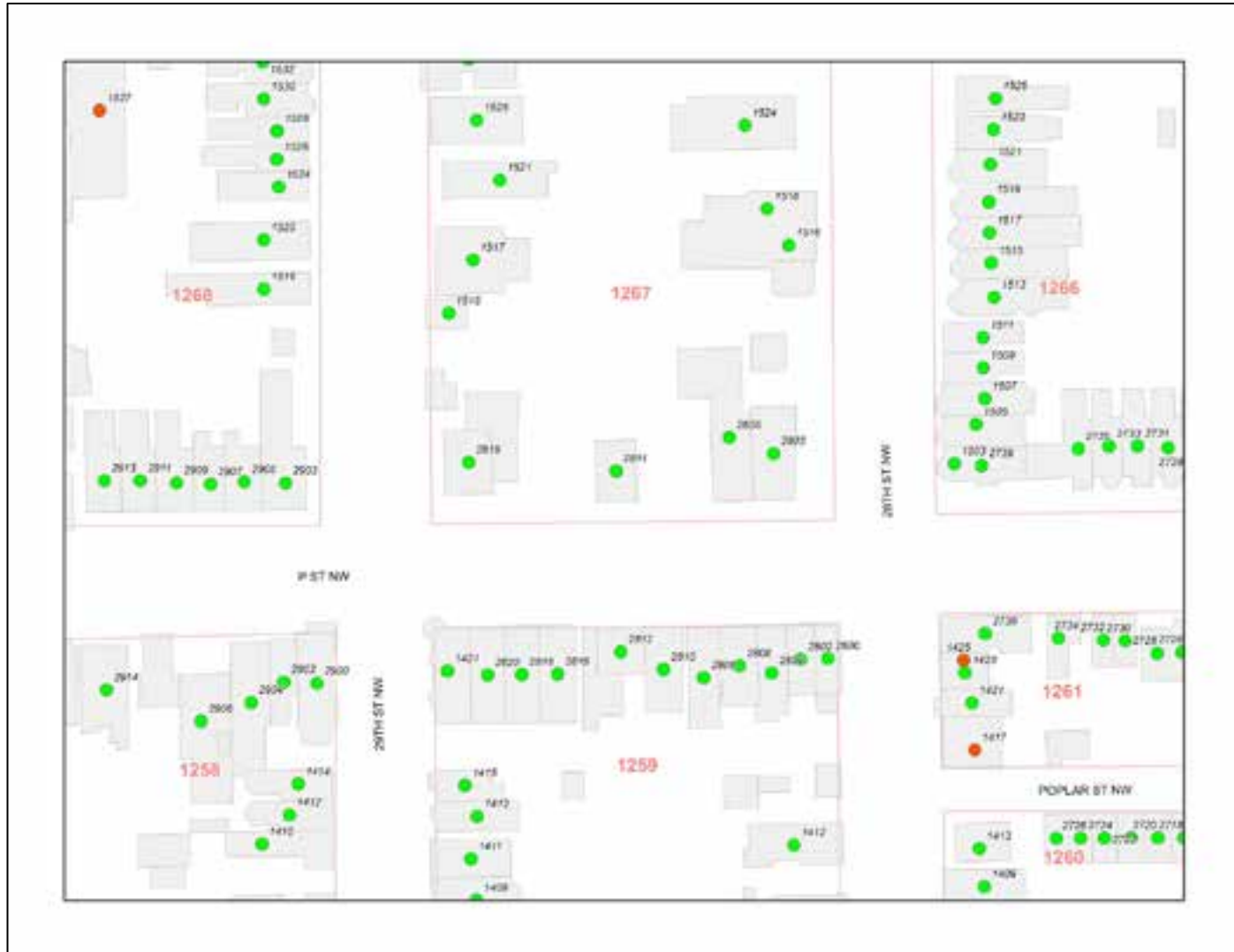
Work Map - Downtown



Work Map - Downtown



Work Map - Georgetown



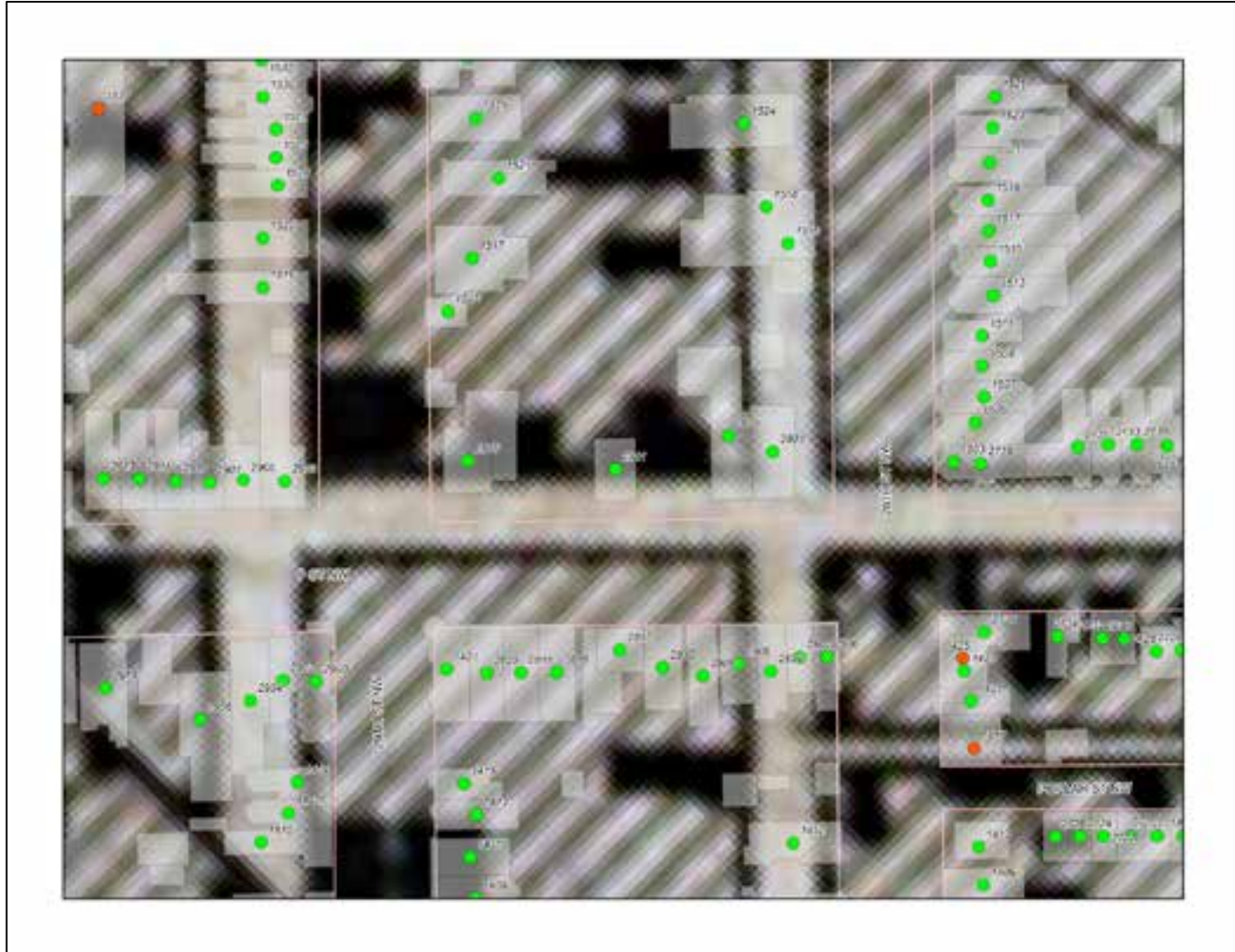
Work Map - Georgetown



Work Map - Georgetown



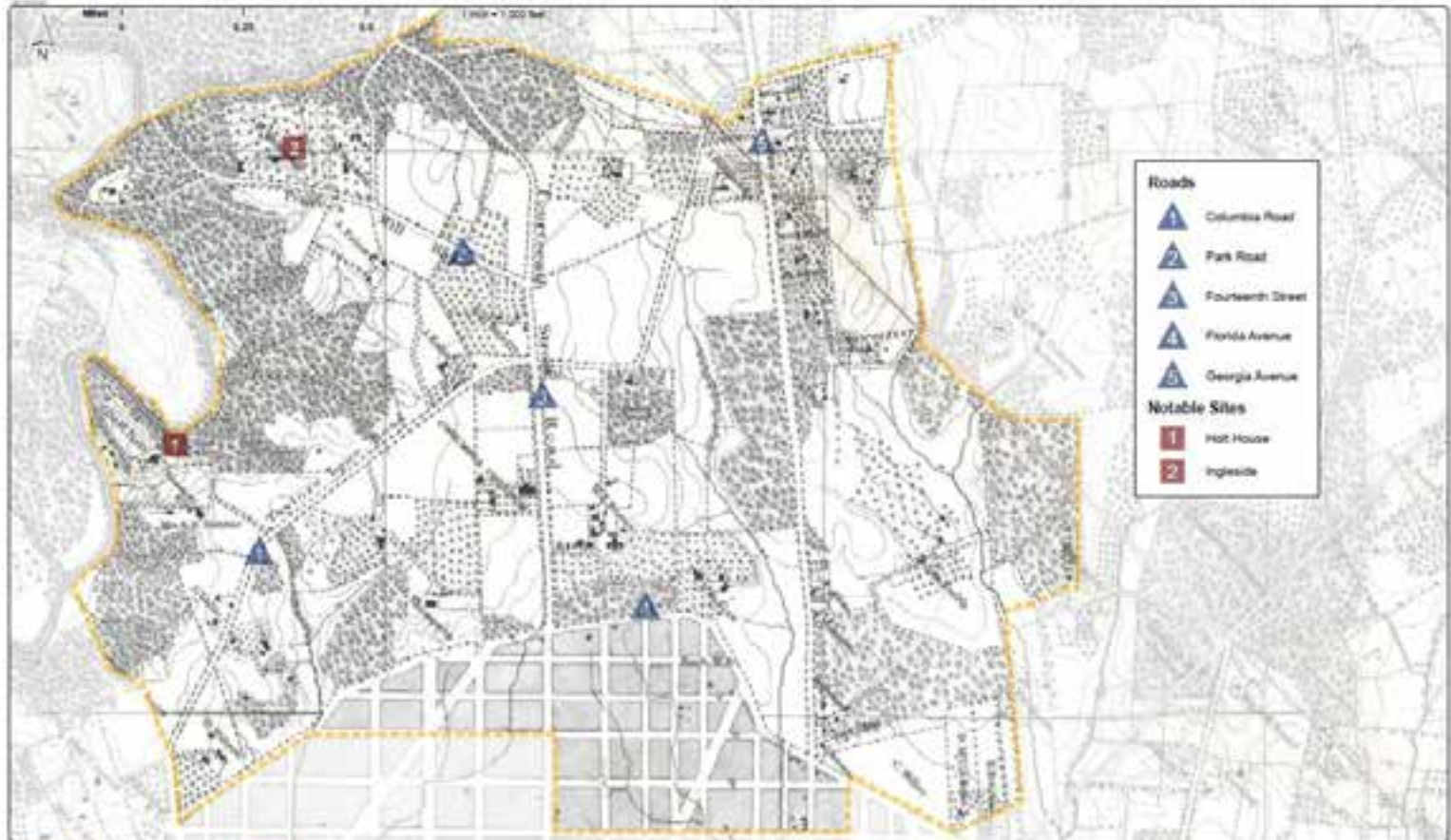
Work Map - Georgetown



Surveying and Mapping

- 162,000 buildings in DC
- 128,000 are of interest / have addresses
- By end of FY2014, 35,000 surveyed and mapped
- About 93,000 buildings left to survey and map
- Nearly 80,000 are in my database

Ward 1



December 2012
This map is as accurate as currently available data allows. It is a planning and informational document and intended for informational purposes only.

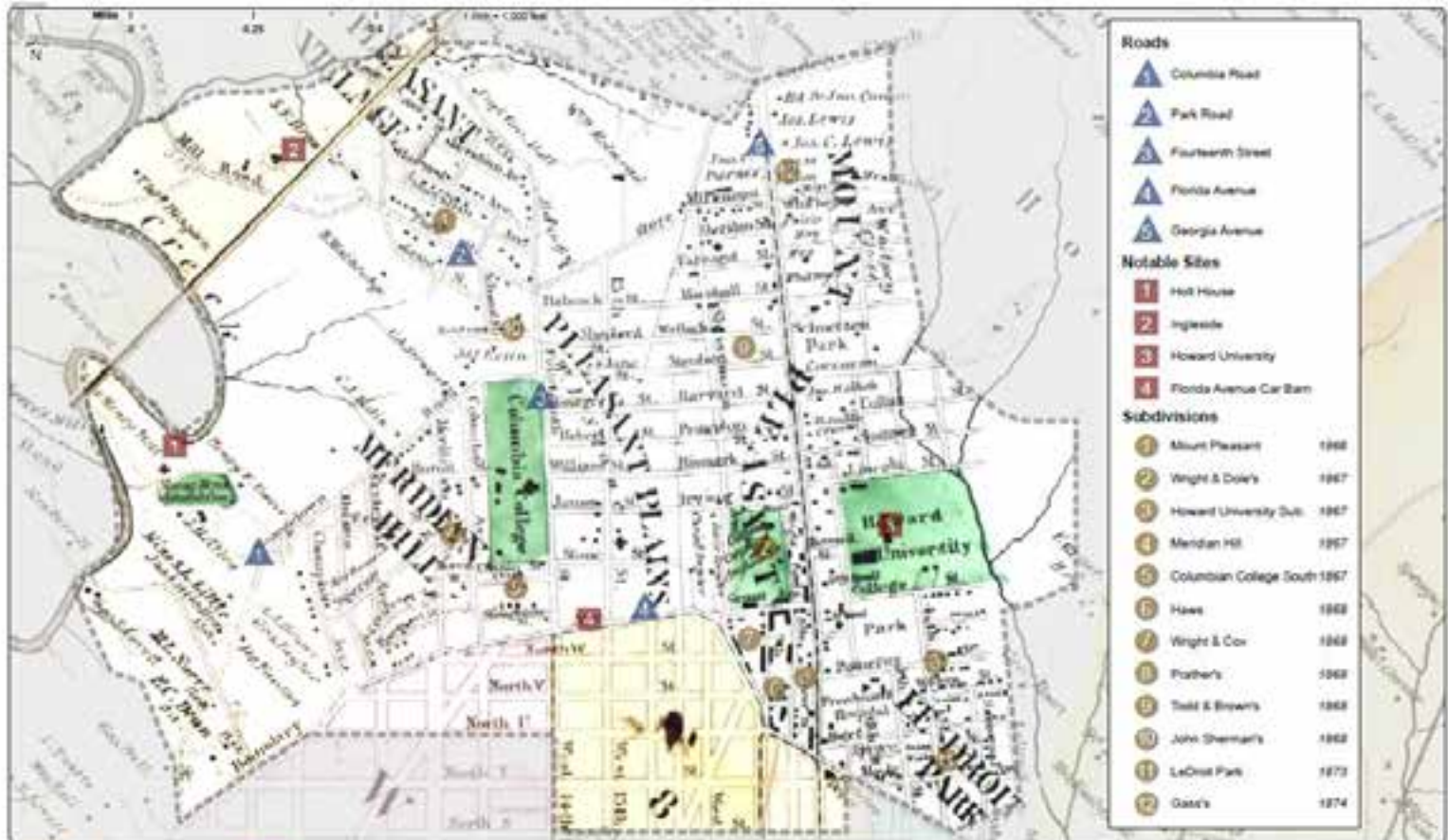
Ward 1 in 1861

Boschke Topographic Map of the District of Columbia
Source: Library of Congress

This project has been funded in part by the U.S. Department of the Interior, National Park Service Historic Preservation Fund grant funds, administered by the District of Columbia Historic Preservation Office.



Ward 1



Ward 1 in 1879

G.M. Hopkins Atlas of 15 Miles
Around Washington
Source: Library of Congress



District of Columbia
Office of Planning



December 2012
This map is an accurate as currently available data allows. It is a planning and informational document not intended for legal administration.

This content has been funded in part by the U.S. Department of the Interior, National Park Service, Historic Preservation Fund grant funds, administered by the District of Columbia Historic Preservation Office.



Ward 1



District of Columbia
Office of Planning



Ward 1 in 1892

Map Showing Suburban Subdivisions
of the District of Columbia
Source: NOAA



December 2012

This map is as accurate as currently available data allows. It is a planning
and informational document that is intended for legal interpretation.

This project has been funded in part by the U.S. Department of the Interior,
National Park Service historic Preservation Fund grant funds, administered
by the District of Columbia's Historic Preservation Office.

Ward 1



District of Columbia
Office of Planning



Ward 1 in 1915

Baird's Real Estate Atlas
of Washington DC
Source: Library of Congress



December 2012
This map is accurate as currently available and does not constitute any informational document nor intended for legal administration.

This project has been funded in part by the U.S. Department of the Interior, National Park Service, Historic Preservation Fund grant funds, administered by the District of Columbia's Historic Preservation Office.

Ward 1



December 2012
This map is accurate as currently available data allows. It is a planning and informational document not intended for legal administration.

Ward 1 in 1929

Washington and Vicinity
U.S. Geological Survey
Source: Library of Congress



This project has been funded in part by the U.S. Department of the Interior, National Park Service historic Preservation Fund grant funds, administered by the District of Columbia's Historic Preservation Office.

Pennsylvania Avenue NHS



District of Columbia
Office of Planning



Year of Construction

- 1820-1860
- 1861-1887
- 1888-1918
- 1919-1962
- 1963-2013

Pennsylvania Avenue
National Historic Site
Period of Significance
1751-1962



June 2013

This map is as accurate as currently available data allows. It is a planning and informational document not intended for legal determinations.

This project has been funded in part by the U.S. Department of the Interior, National Park Service, National Preservation Fund grant funds, administered by the District of Columbia Historic Preservation Office.

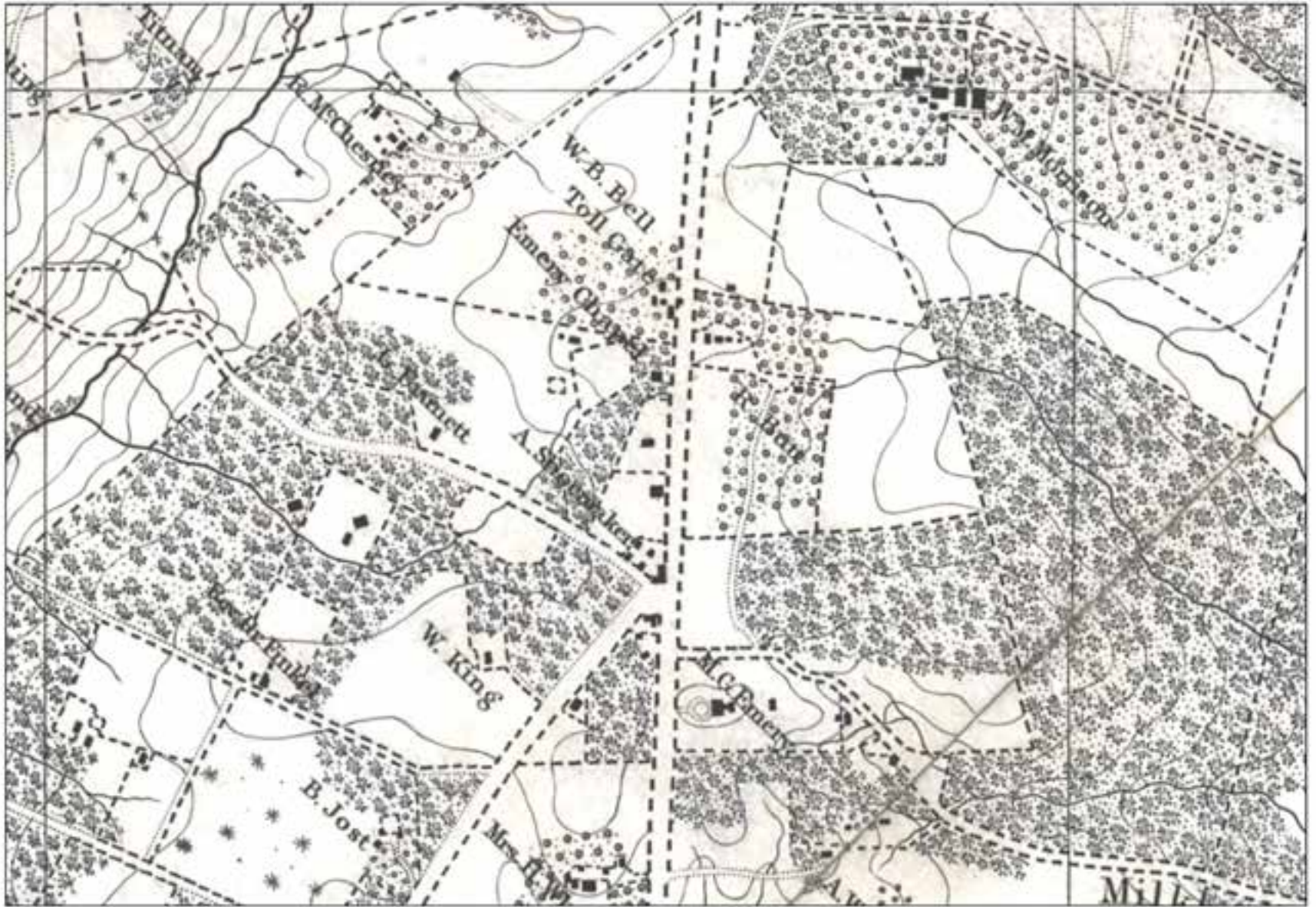
Brightwood Development

Northwest Washington DC

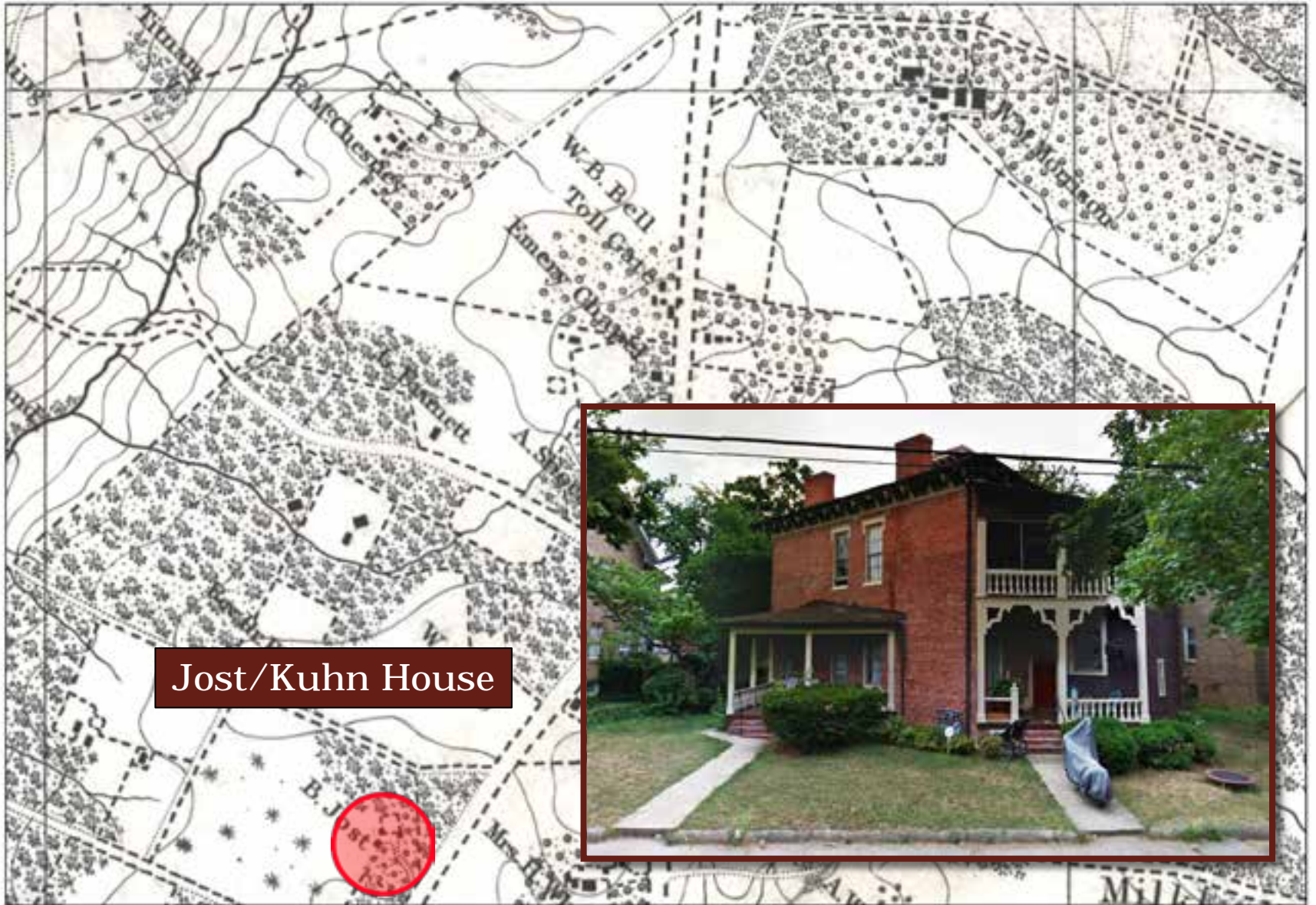




Brightwood Today

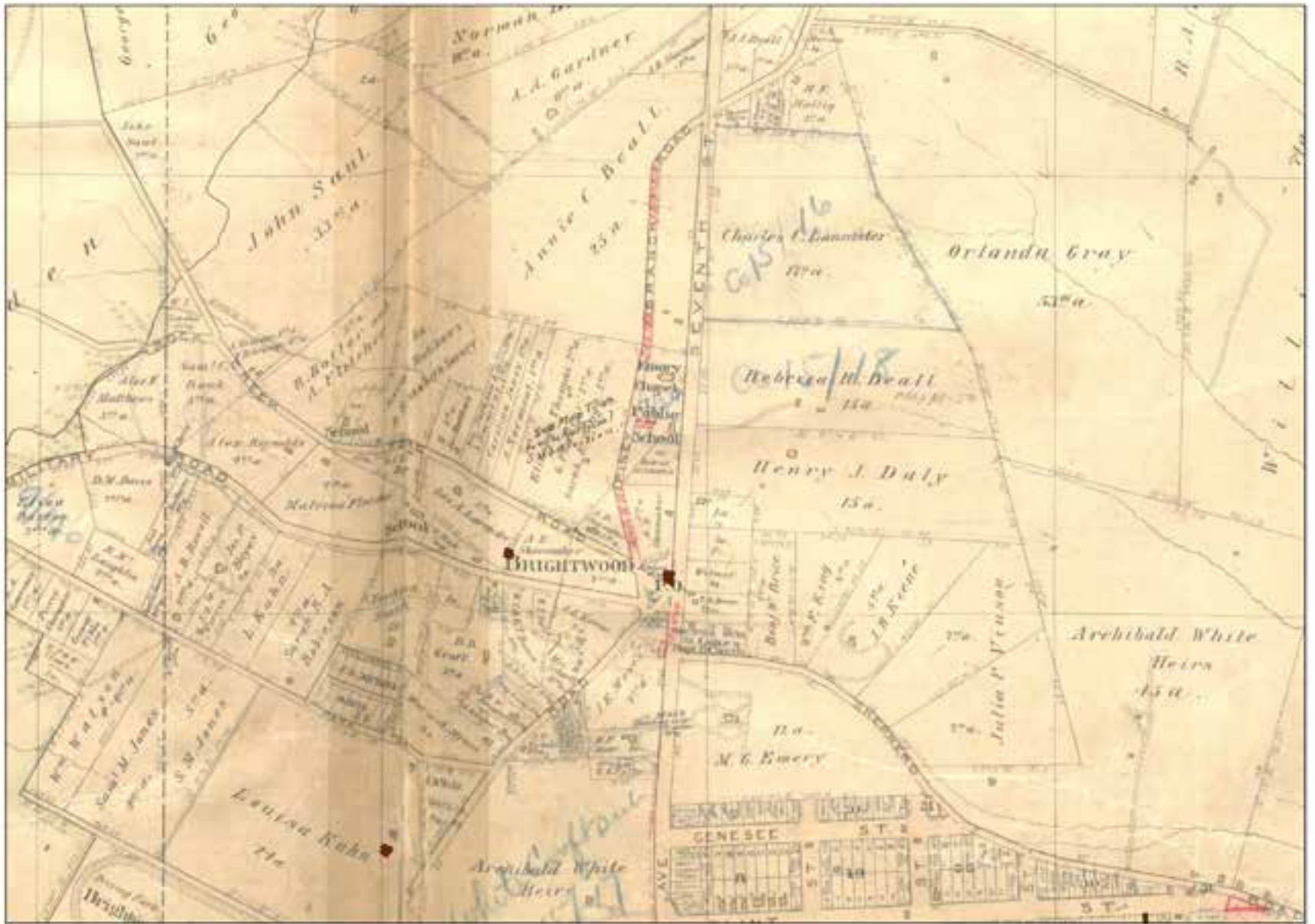


Boschke Map 1861

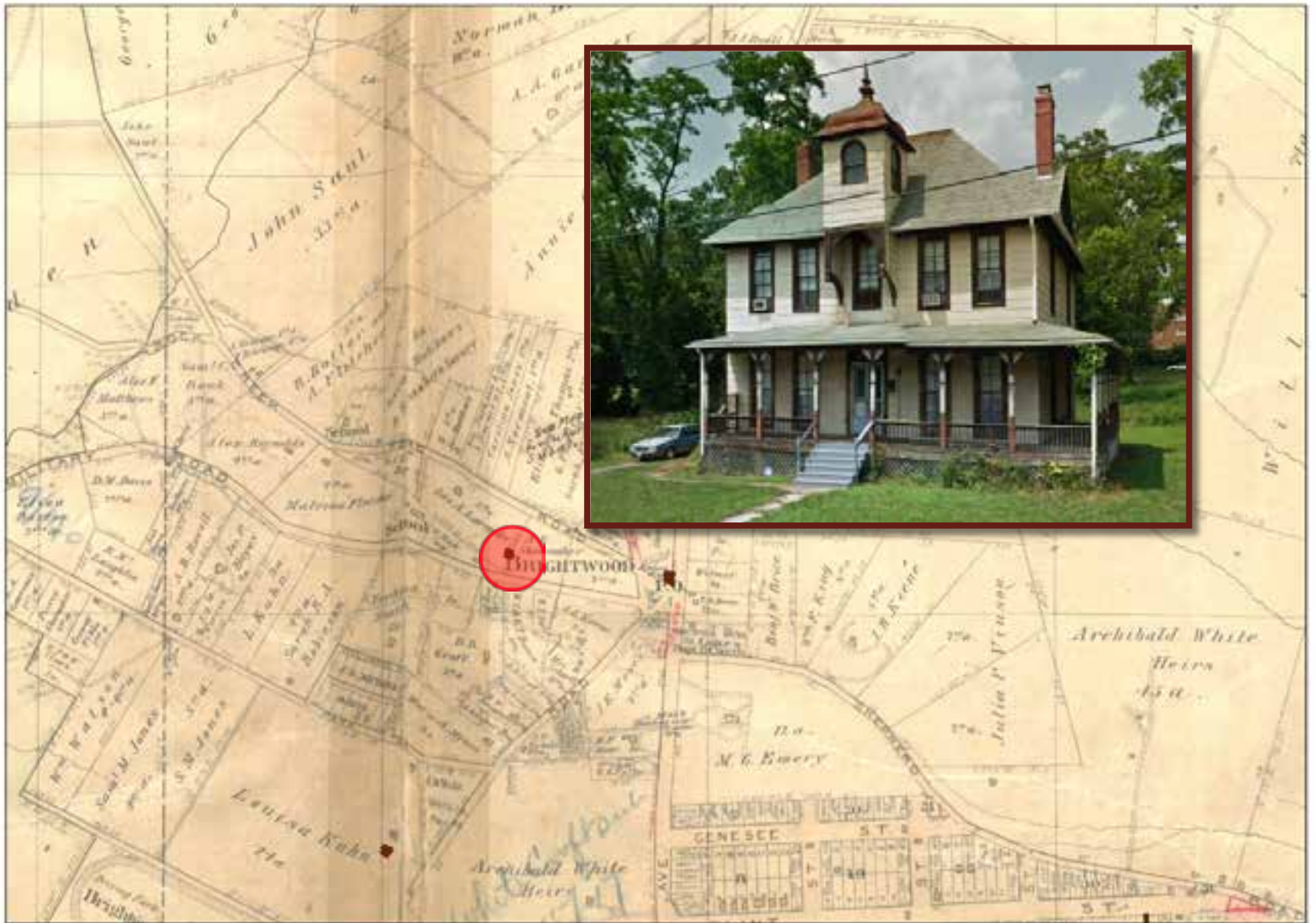


Jost/Kuhn House

Boschke Map 1861



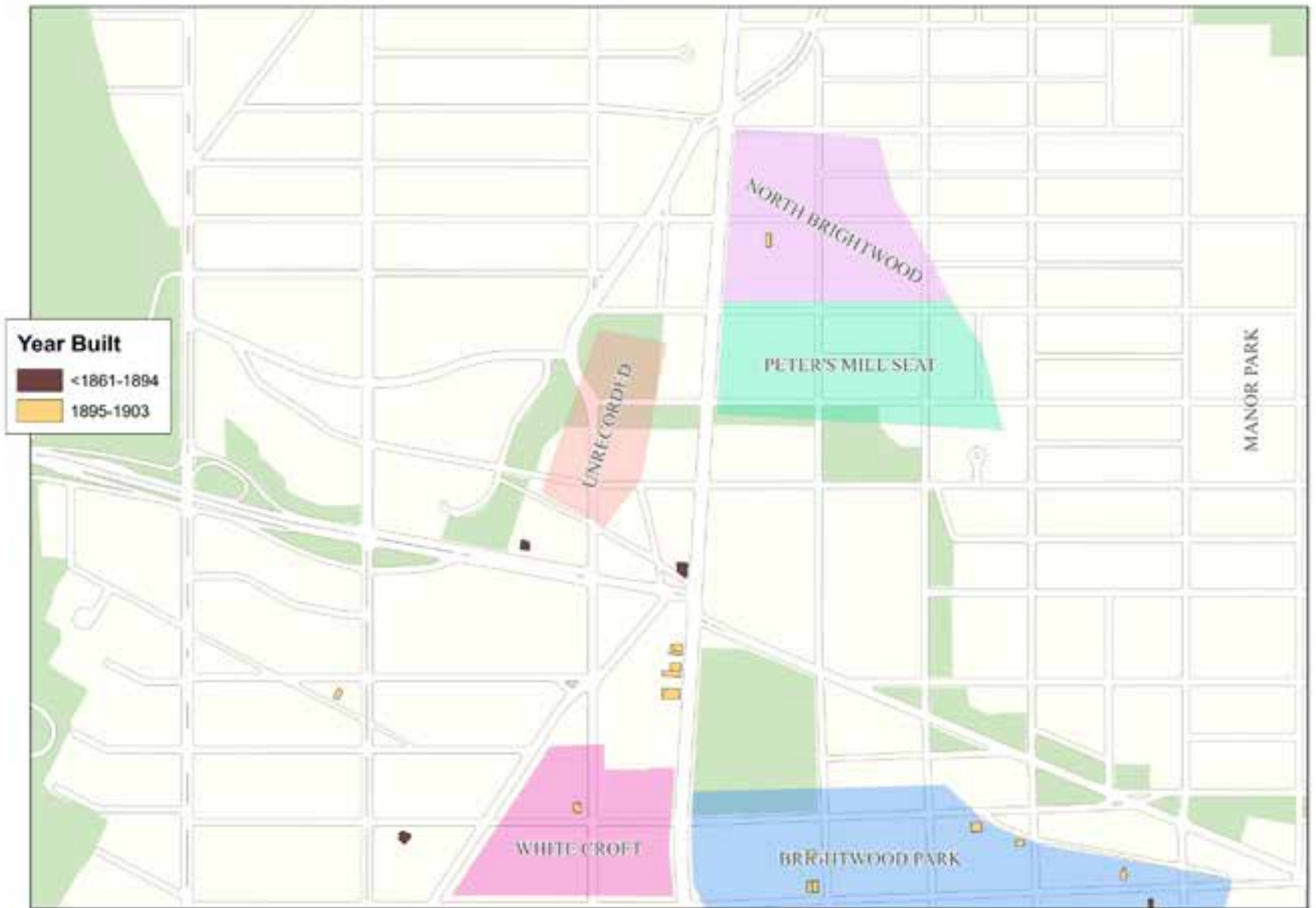
Hopkins Map 1894



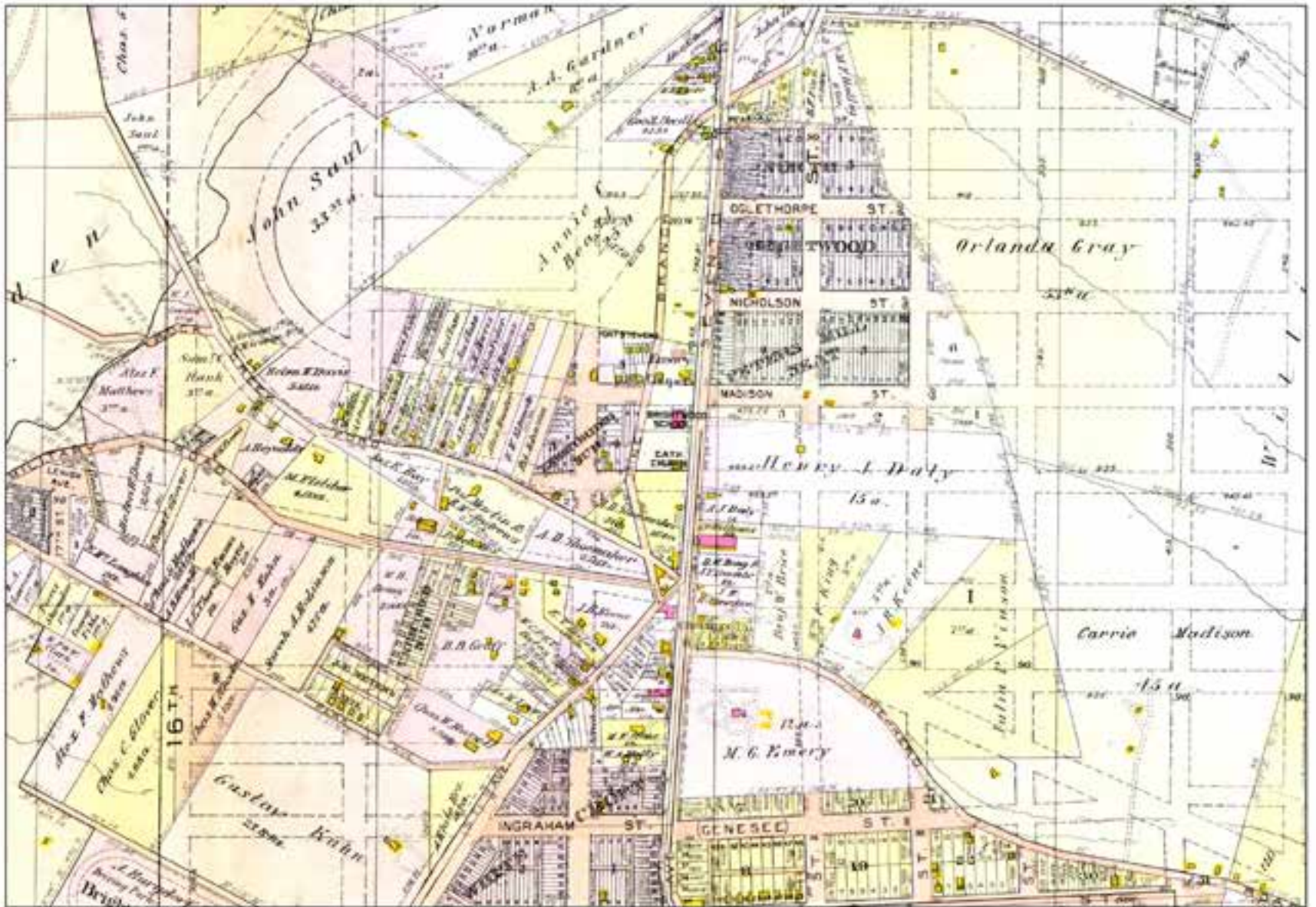
Hopkins Map 1894



Development by 1903



Development by 1903



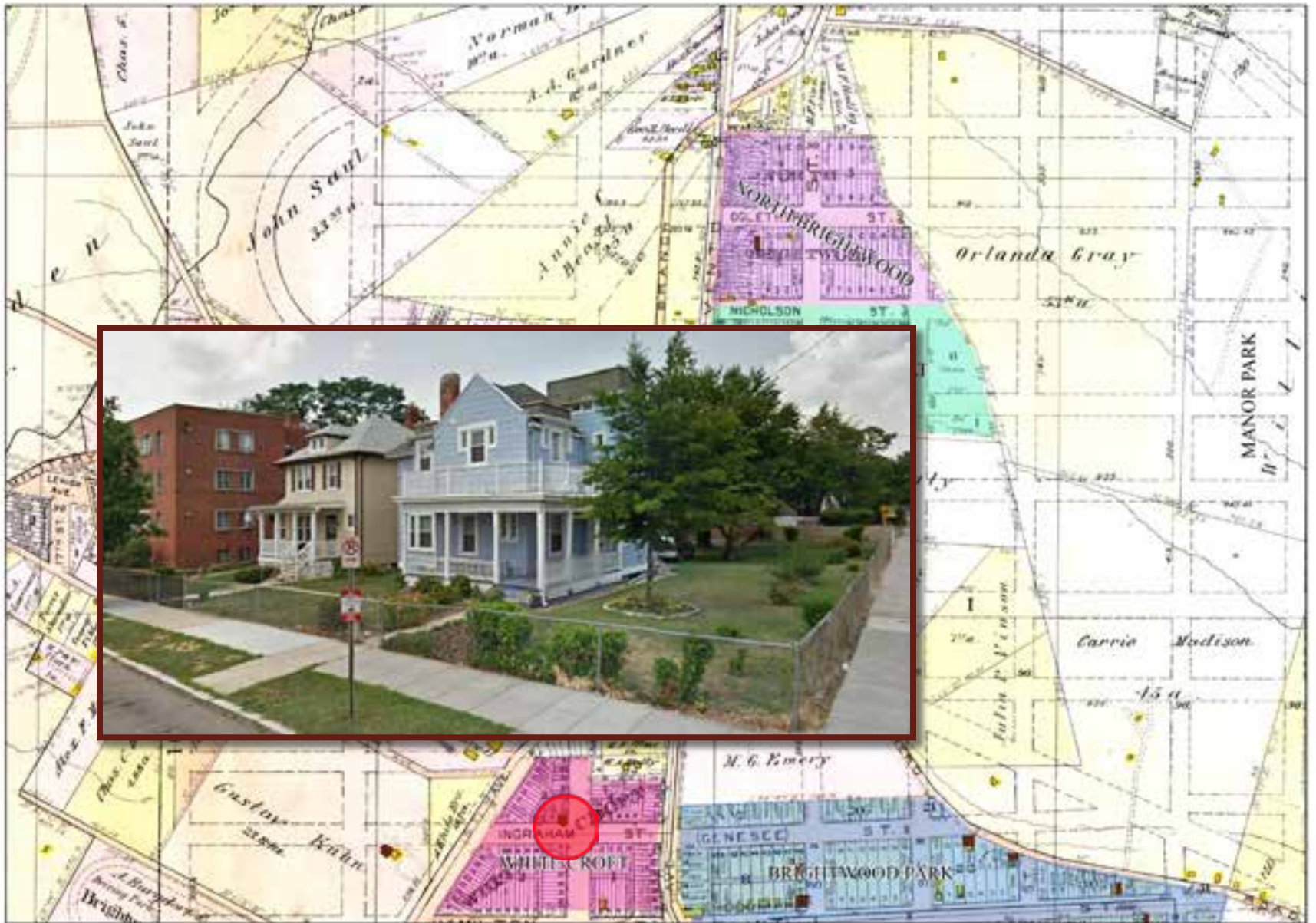
Baist Map 1903



Baist Map 1903



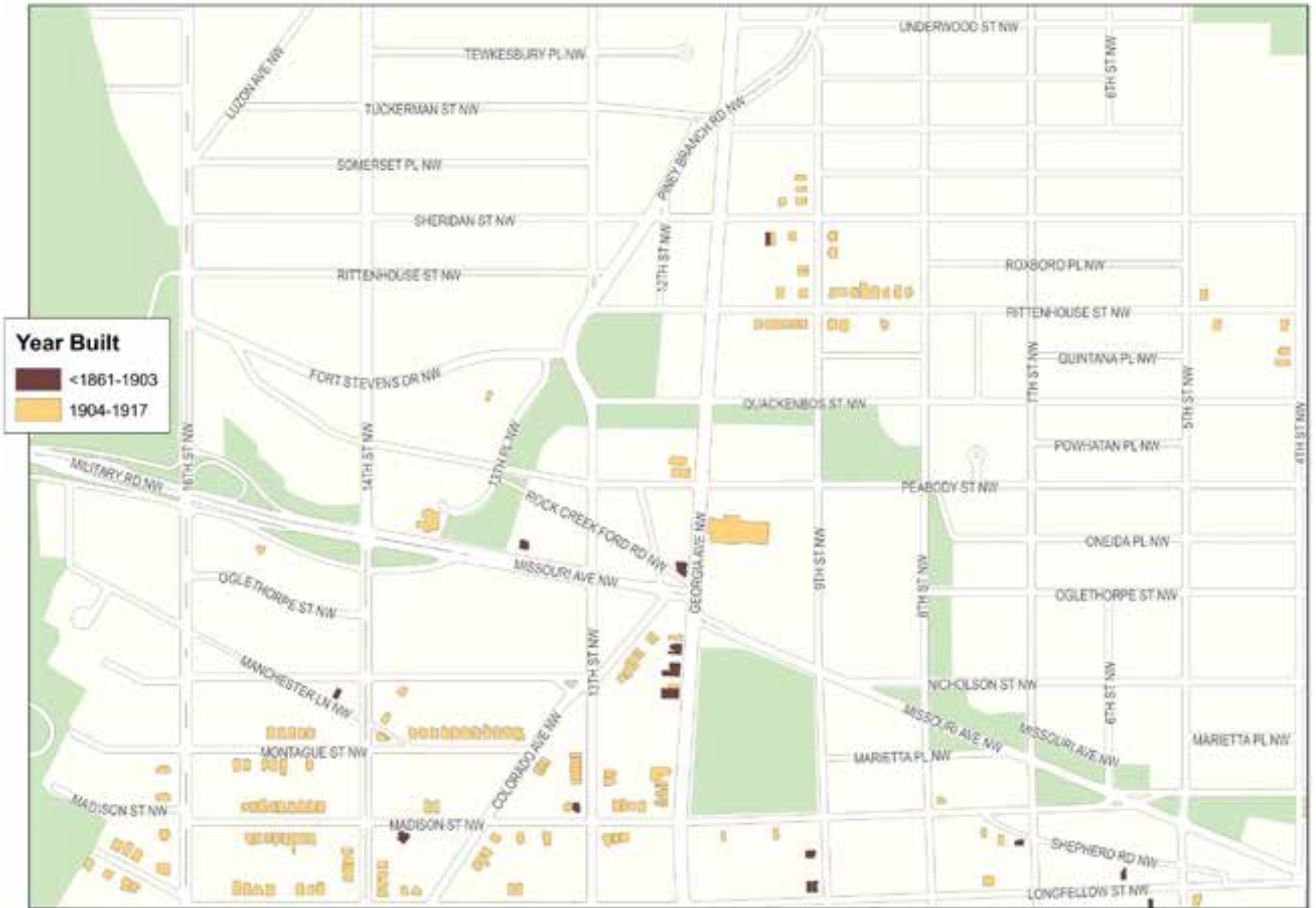
Baist Map 1903



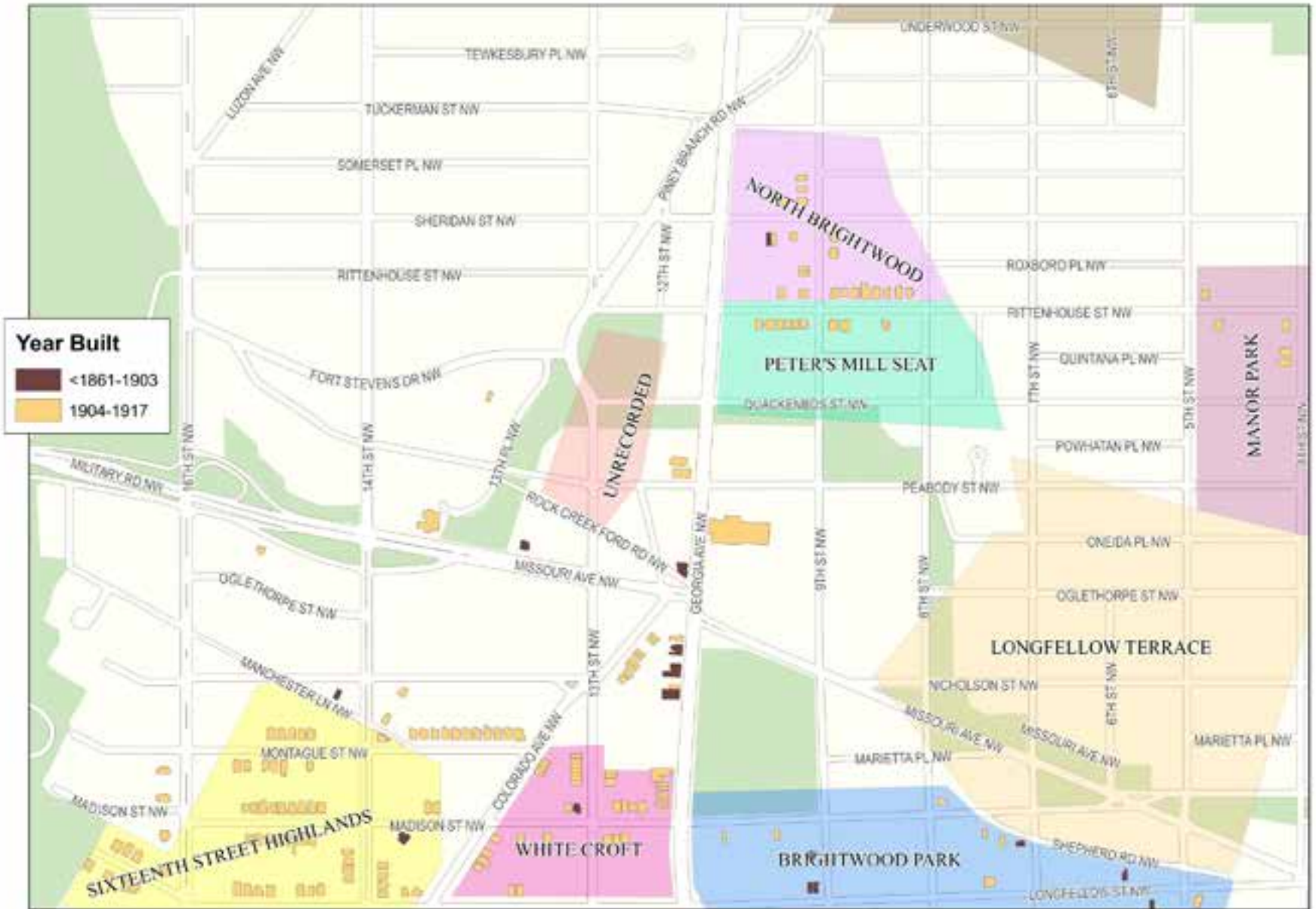
Baist Map 1903



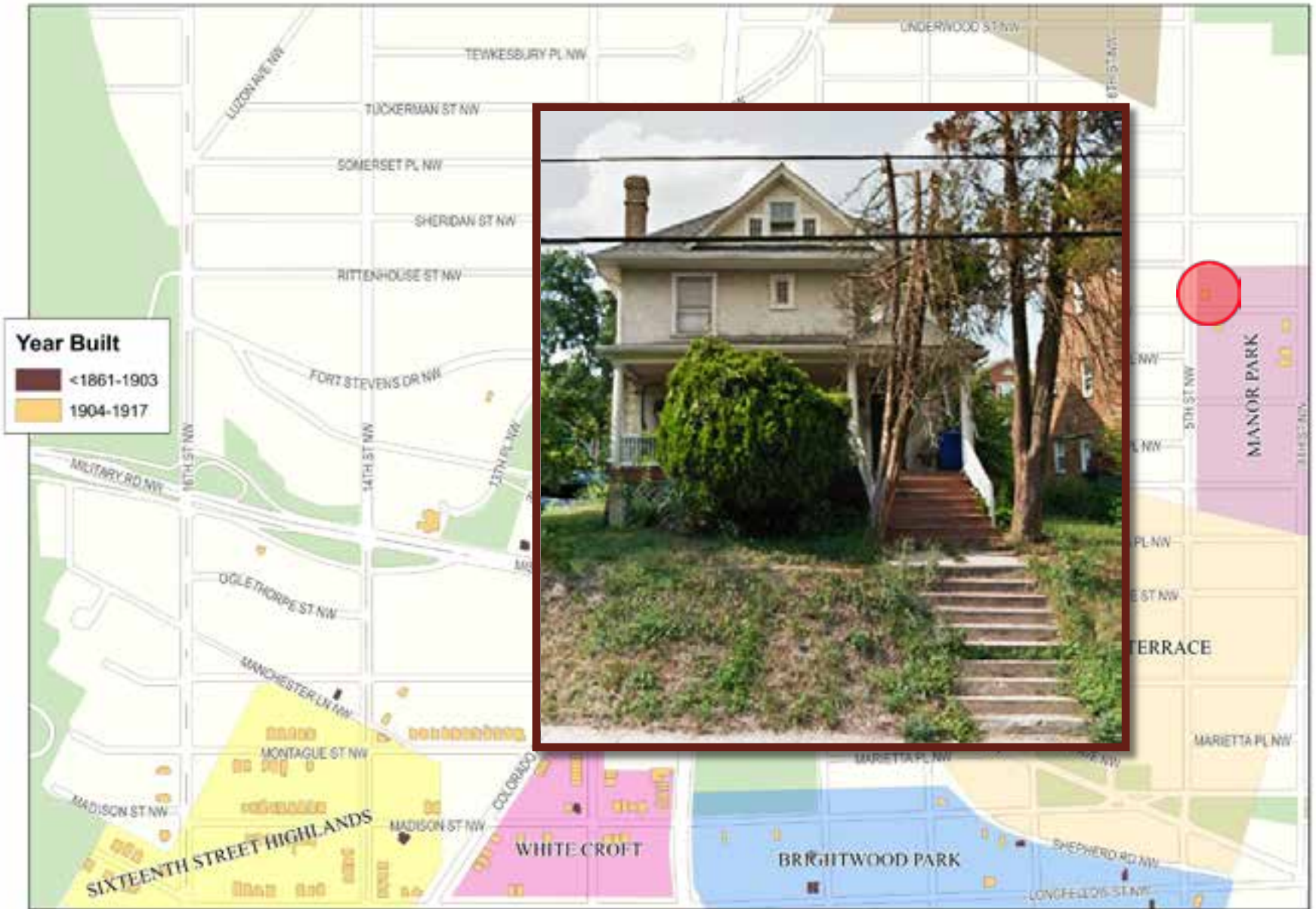
Baist Map 1903



Development 1904-1917



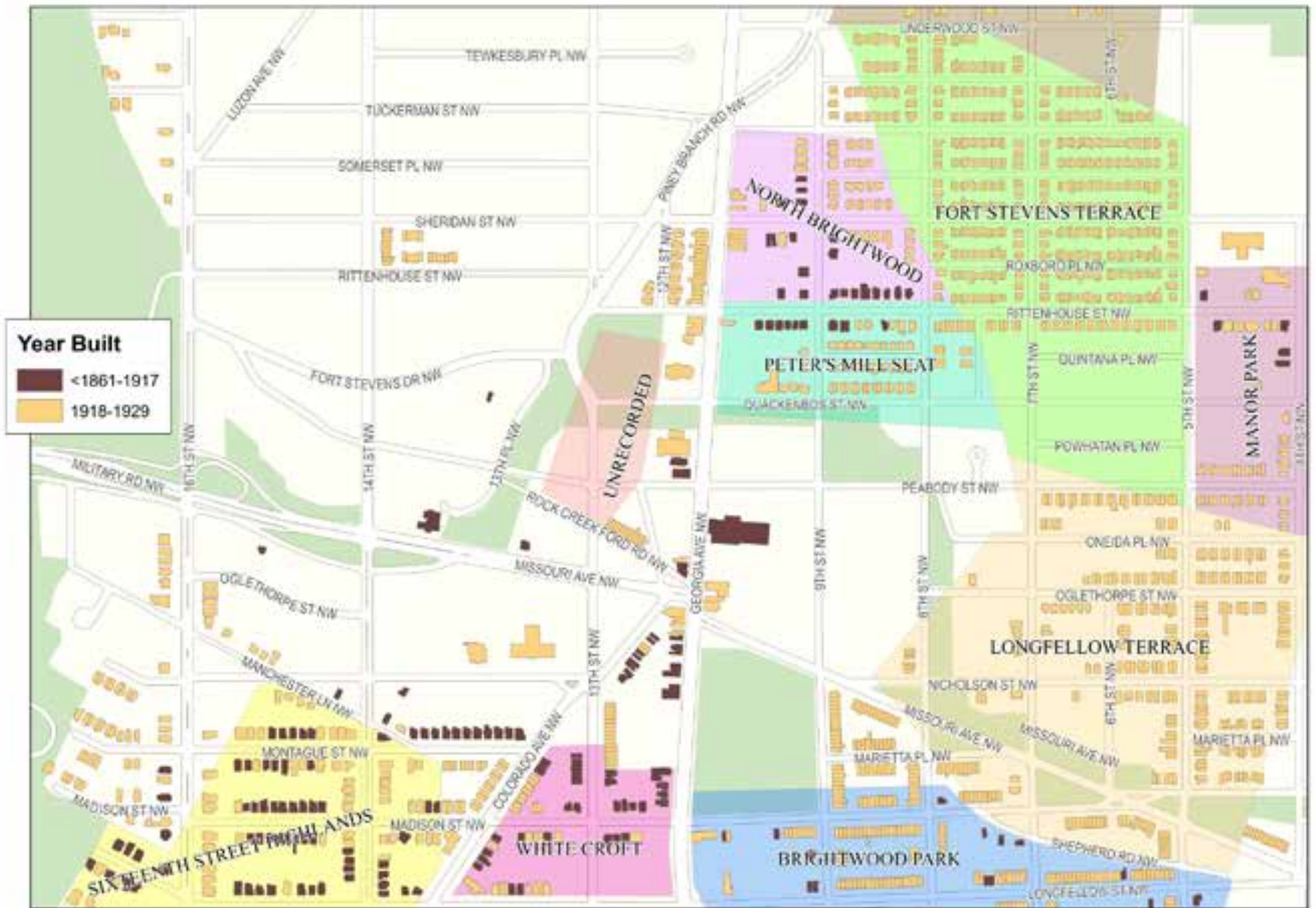
Development 1904-1917



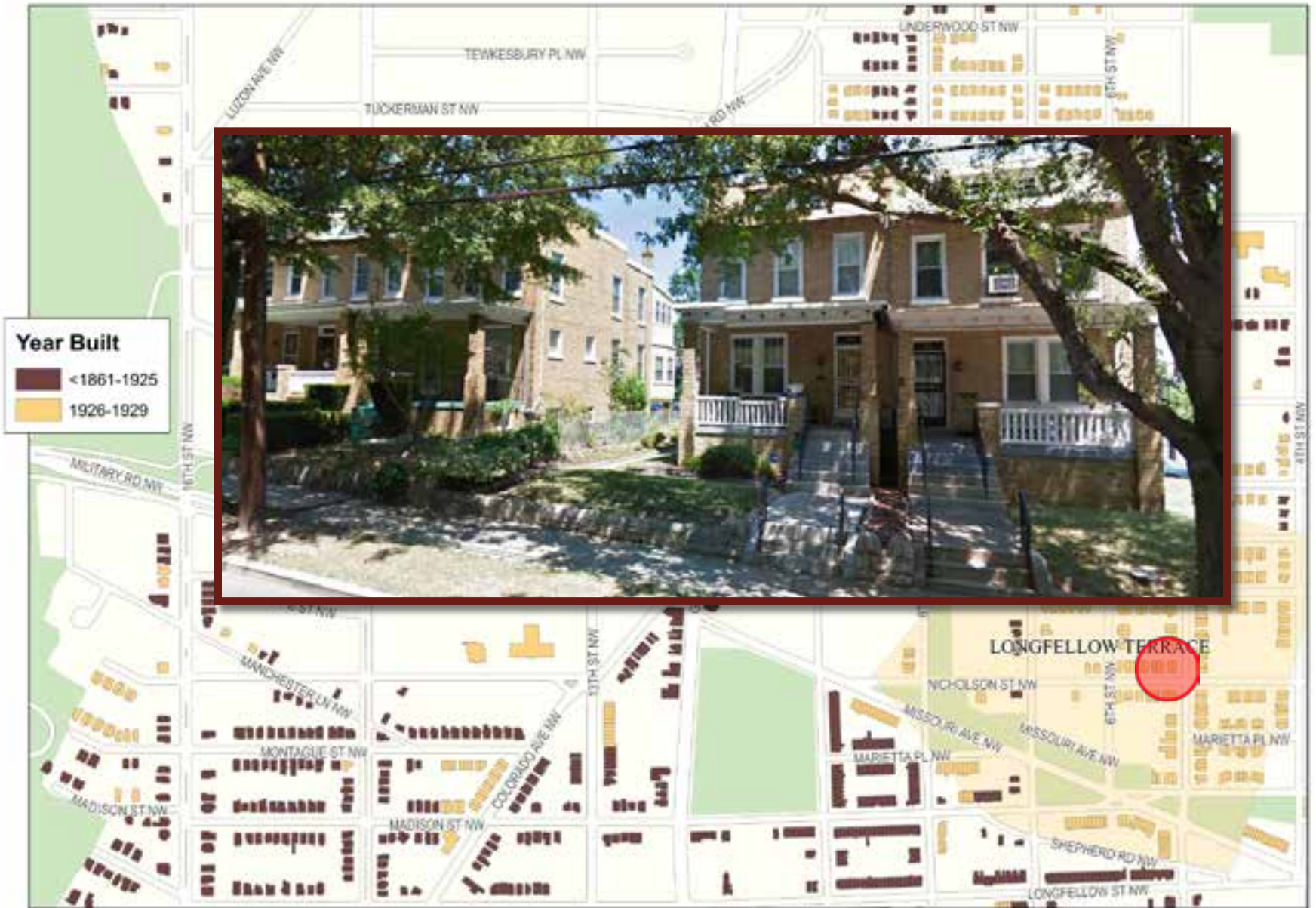
Development 1904-1917



Development 1904-1917



Development 1918-1929



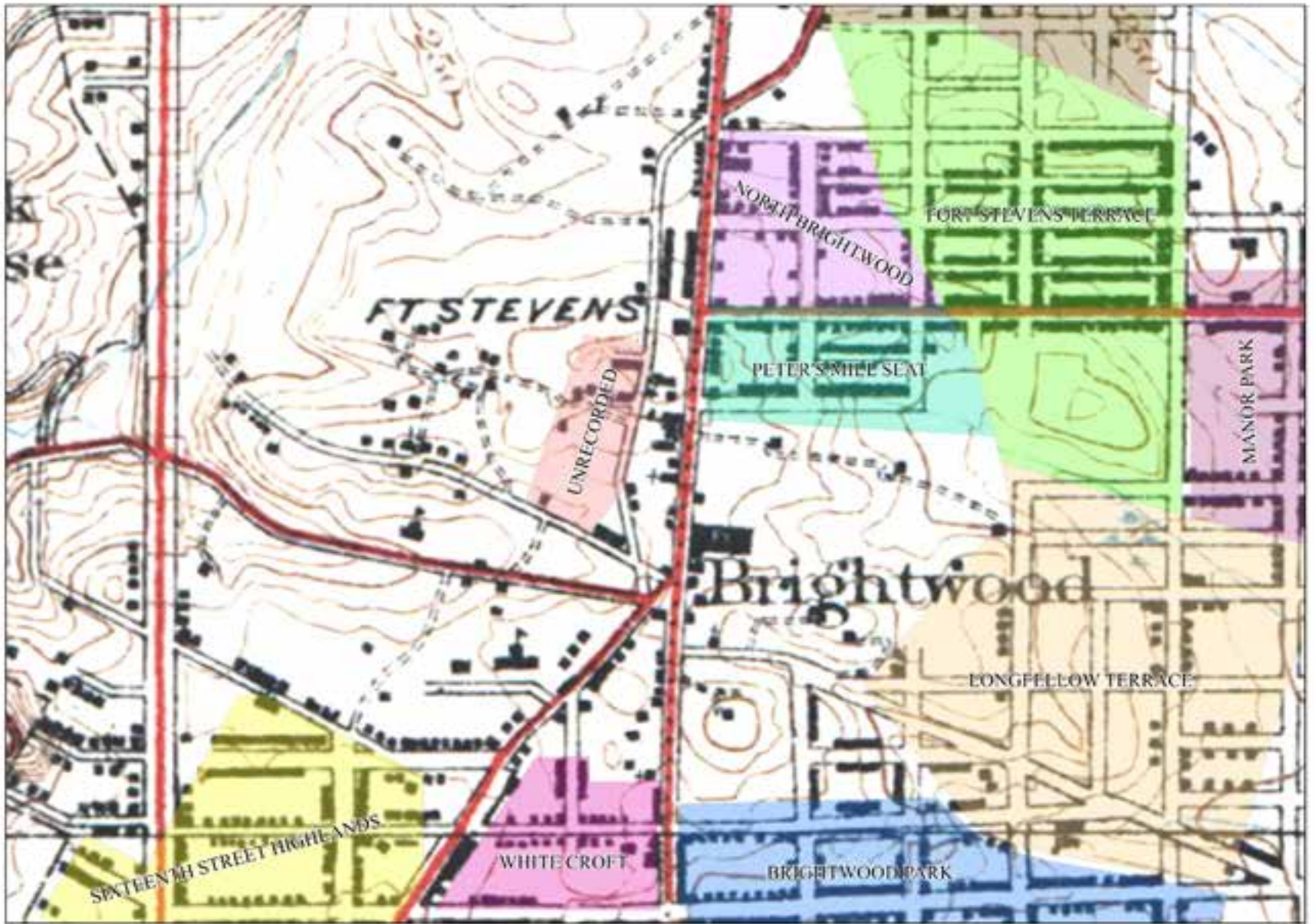
Development 1926-1929, Longfellow Terrace



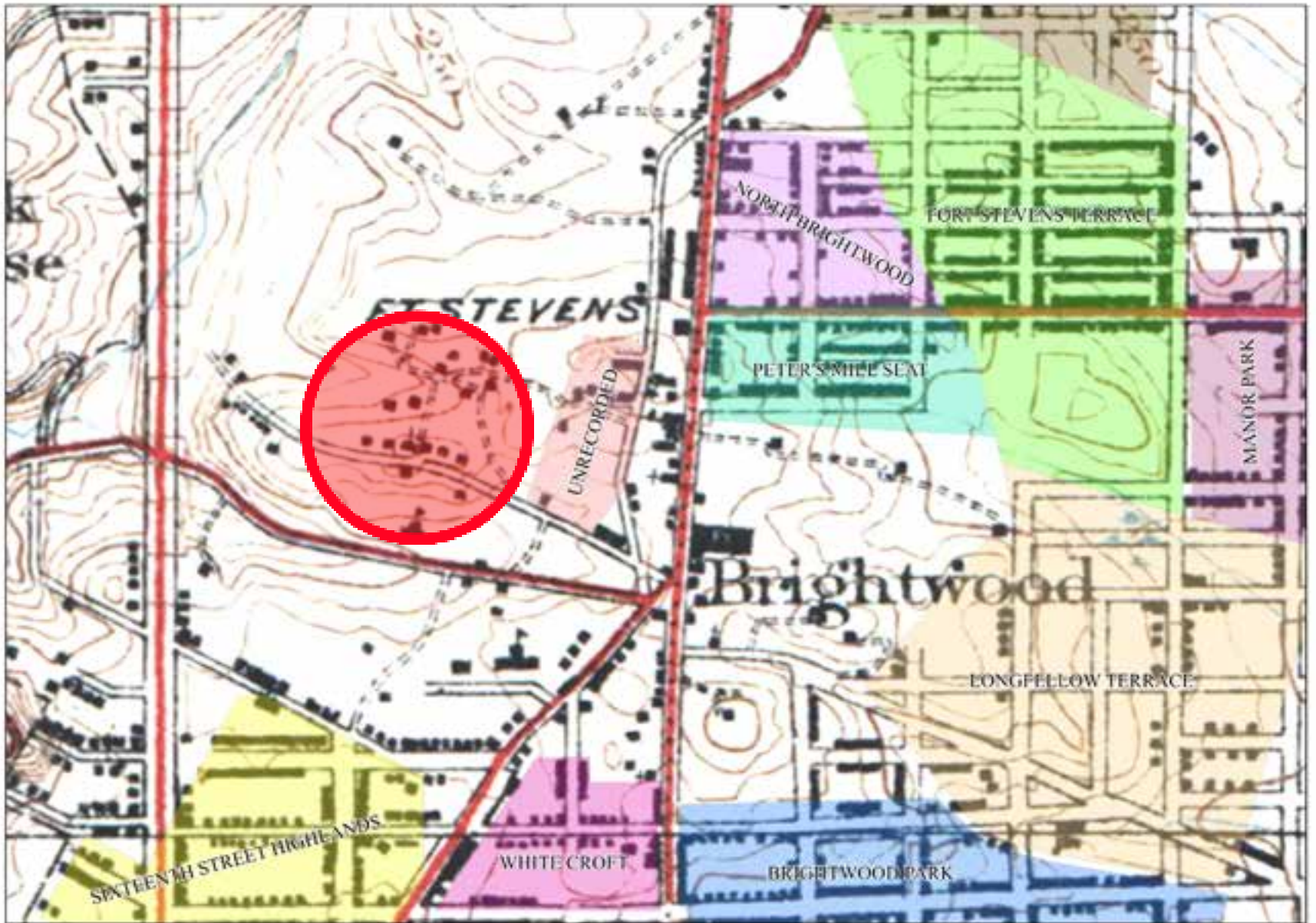
Development 1918-1929, Wardman Companies



USGS Map 1929



USGS Map 1929



USGS Map 1929



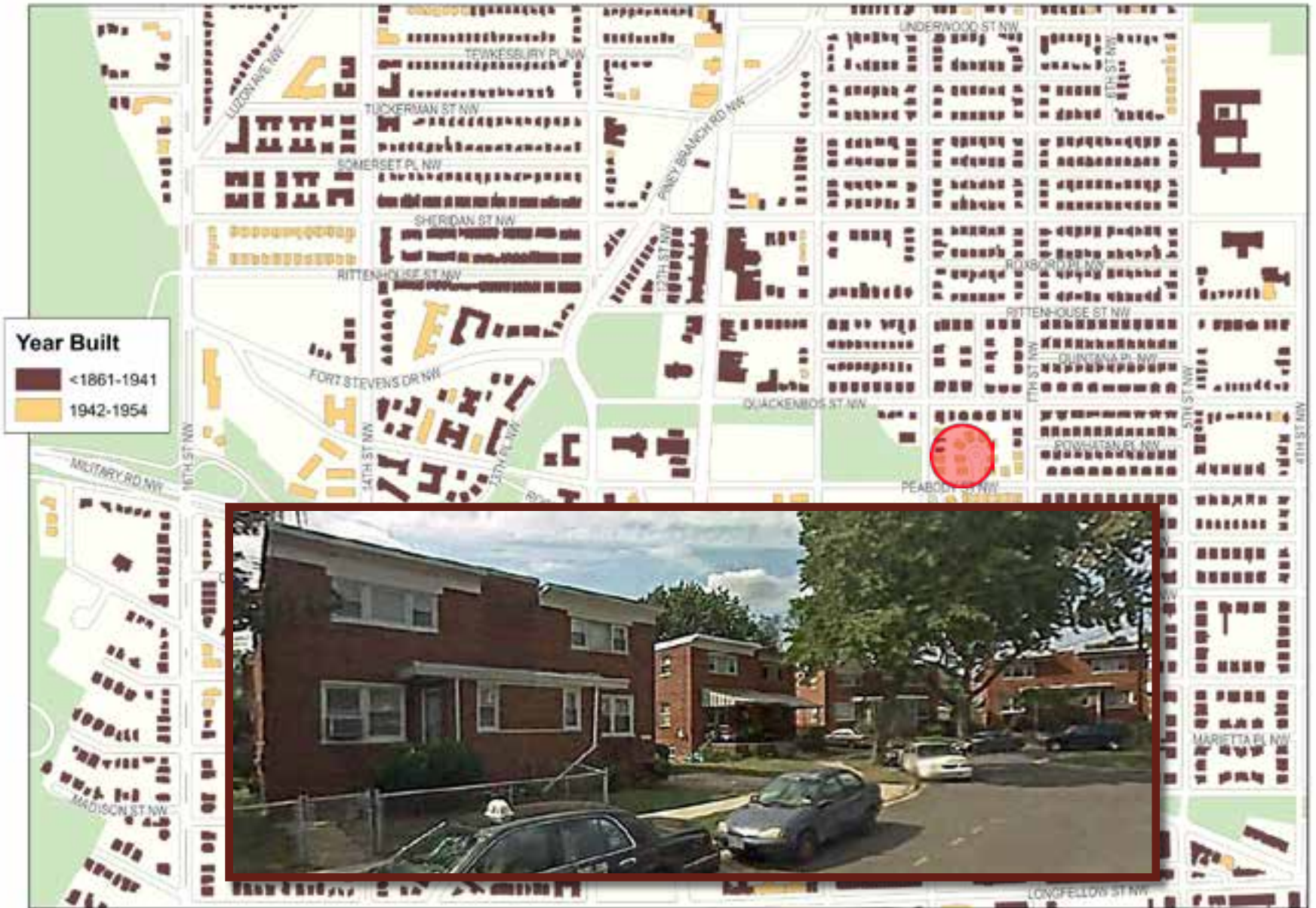
Development 1930-1941



Development 1930-1941, DC Developing Company



Development 1942-1954



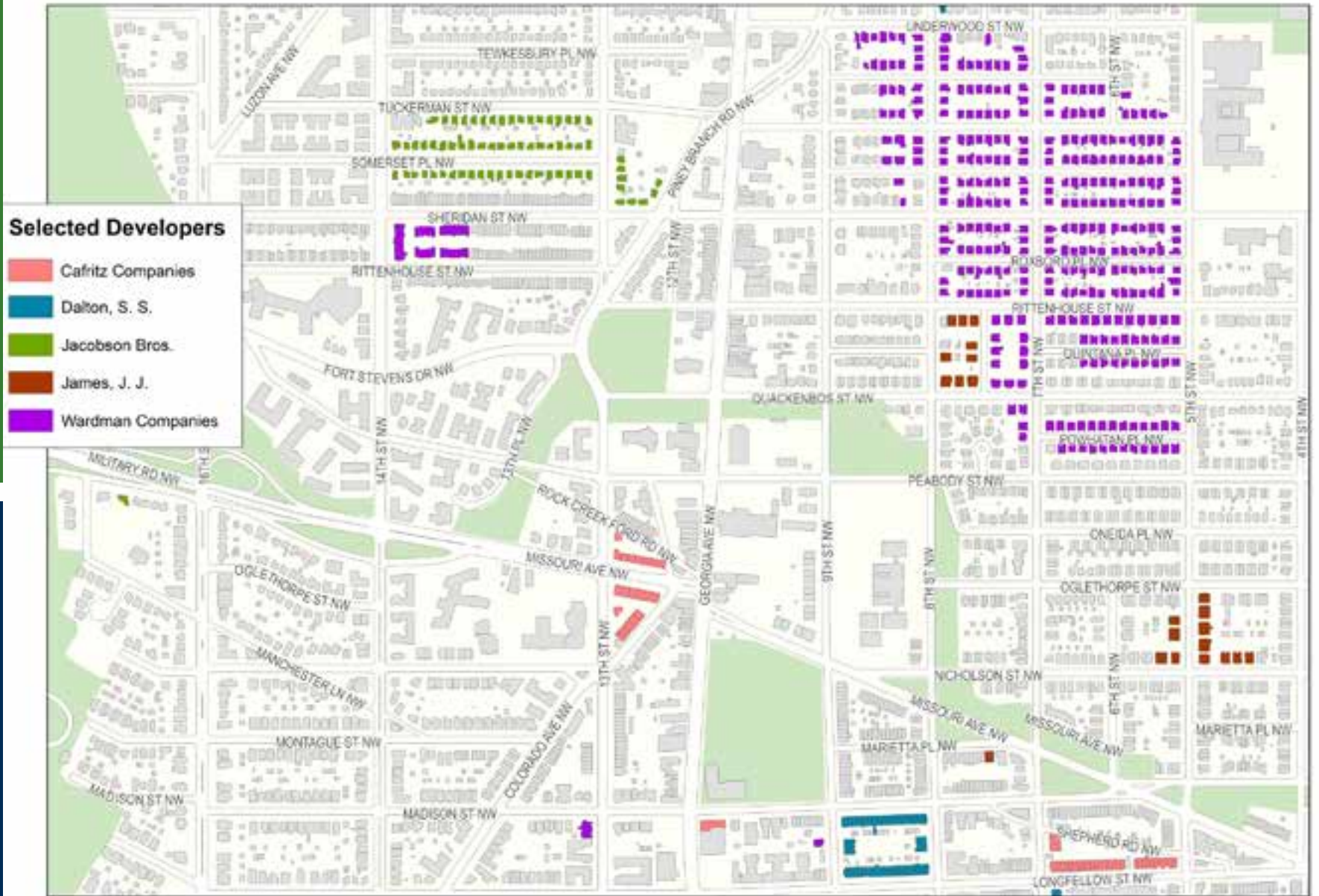
Development 1942-1954



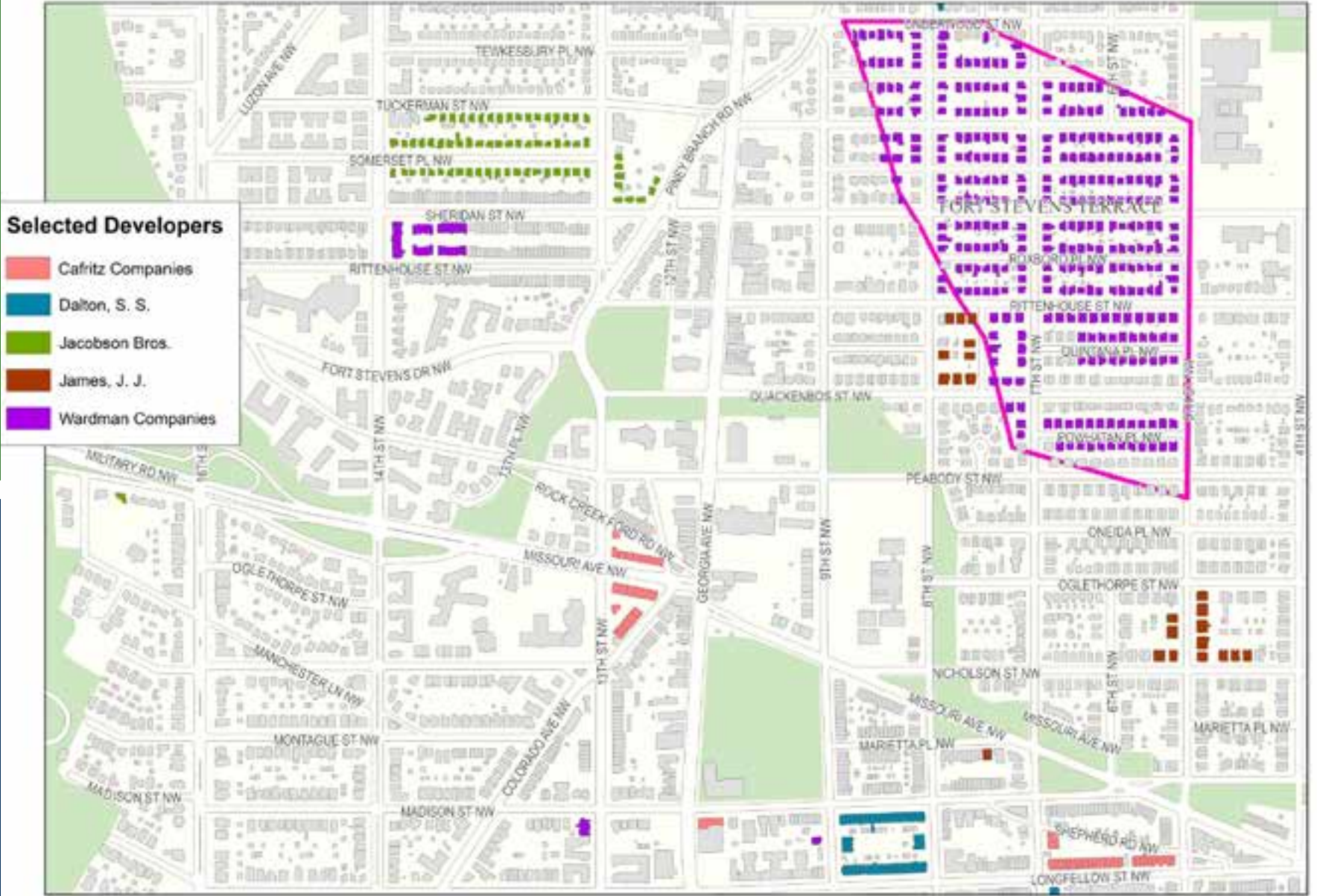
Development 1942-1954



Development <1861-2011



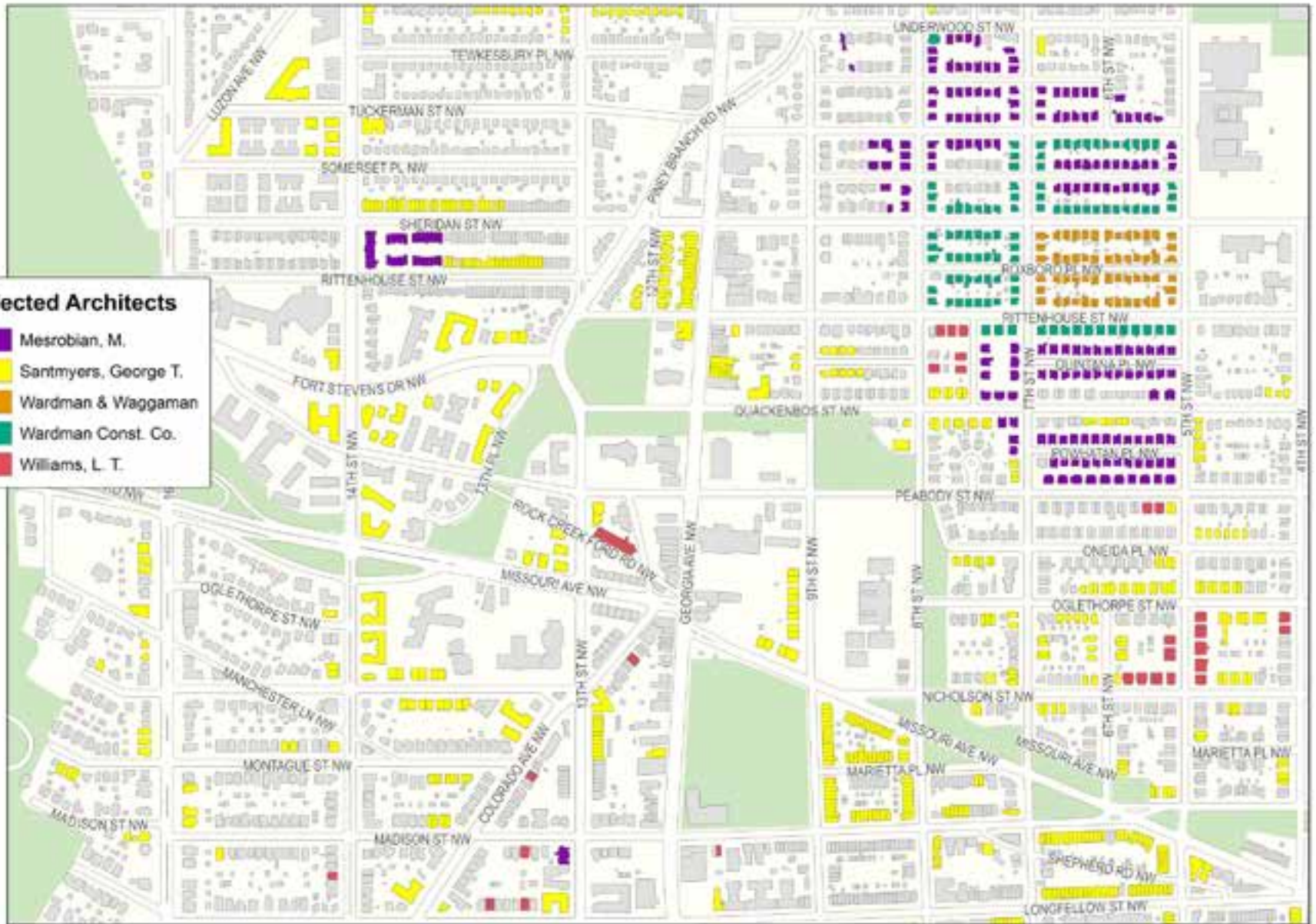
Selected Developers in Brightwood



Selected Developers in Brightwood

Selected Architects

- Mesrobian, M.
- Santmyers, George T.
- Wardman & Waggaman
- Wardman Const. Co.
- Williams, L. T.



Selected Architects in Brightwood

Brightwood Development

Northwest Washington DC

