

2013 Esri Mid-Atlantic User Conference

December 10-11 | Baltimore, MD



ArcGIS Online Steps to Success

Lauri Dafner

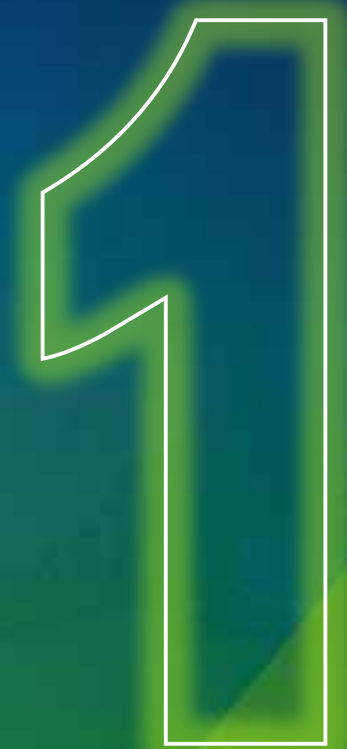
Solution Engineer



Welcome



Establish the Vision and Governance



Vision & Governance



- What is the mission and vision?
- Who is the audience?
- Establish a curator or group of curators.



Establish your Brand



Your Home Destination



Configuration & Settings



- Icon
- Homepage
- Featured Content
- Map
- Security



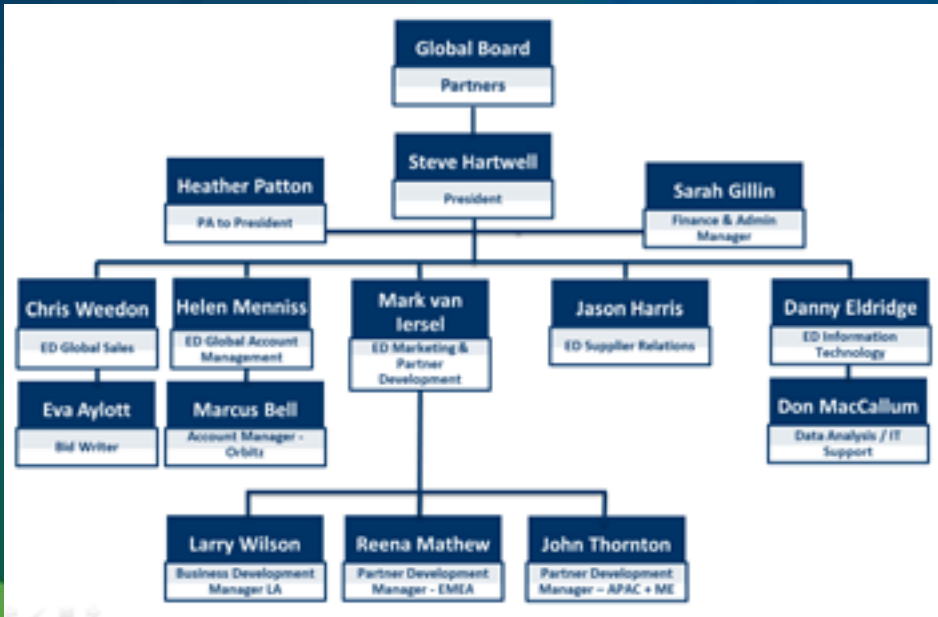
Demonstration & Discussion



Organize Using Groups



Organization or Project Chart



- Vacant & unseals properties
Information on the vacant and unseals properties in Baltimore.
created by lalmer_BOCD on December 5, 2012
[Details](#)
- Featured Content
This group is for highlighting the most useful news and blogs on our Organization's home page.
created by lalmer_BOCD on December 5, 2012
[Details](#)
- Frederick
The USAP Freshness status is on M1714 at PHASD base 1740, Baltimore, MD.
created by rweeder_BOCD on December 5, 2012
[Details](#)
- Milly Shultz
This group contains maps and data related to customers facing skills shortages and the related activities of the Fire Department.
created by rweeder_BOCD on December 5, 2012
[Details](#)
- CitiNet
The Office of CitiNet is a chief performance-based management group responsible for continuously improving the quality of services provided to the citizens of Baltimore City.
created by rweeder_BOCD on December 5, 2012
[Details](#)
- SPD Special Events Planning
Baltimore Police Department supports the safety and security of special events around the City.
created by rweeder_BOCD on December 5, 2012
[Details](#)
- Battalion Chief level
Fire suppression companies are divided into six battalions, each led by a Battalion Chief.
created by rweeder_BOCD on December 5, 2012
[Details](#)
- Hydrant Inspections
created by rweeder_BOCD on December 5, 2012
[Details](#)



Provision and Organize Useful Content



What type of content?



- Server Services
- Shapefile(s)
- Esri Map Layers
- Etc.



Demonstration & Discussion



Create Useful Information Products



Information Products in ArcGIS Online



- Mash up layers in a web map
- Configurable Web Apps



Demonstration & Discussion



Invite Users



Invite Members from your Organization

Invite Users to Baltimore City Fire Department

Step 1 of 3

How would you like to invite users to your organization?

- Pre-establish new ArcGIS logins for the users to be invited.
- Have invited users join using either their existing ArcGIS logins or by creating new ArcGIS logins.

NEXT

Enterprise Logins



You can set up your Organization so that your users will be able to sign in to ArcGIS using the same username and password that they use with your existing on-premises systems.

The key to this is through a technology known as identity federation that this section will help you set up through two actions.

SET IDENTITY PROVIDER

GET SERVICE PROVIDER

Roles



	User	Publisher	Administrator
Add items	✓	✓	✓
Create web maps	✓	✓	✓
Share content	✓	✓	✓
Participate in groups	✓	✓	✓
Customize Site			✓
Publish hosted services		✓	✓
Manage the organization & other users			✓



Promote your Organization





Questions & Wrap-up

2013 Esri Mid-Atlantic User Conference

December 10-11 | Baltimore, MD



THANKS!

Lauri Dafner

ldafner@esri.com



Understanding our world.