



The Use of the ArcGIS

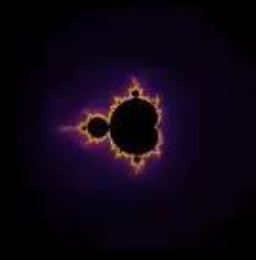
Supporting the Local Government's
Mission of Providing a Safe Walkable Community.

DAVID N. KUNZ, GISP — CIVIL SOLUTIONS, A DIVISION OF ARH





10^{-0}



Bloomfield, New Jersey

Incorporated: March 1812

Population: 47,600

Area: 5.3 sq. mi

Home to Bloomfield College
founded in 1868



Bloomfield
New Jersey



Defining Parameters

Shrinking budgets

“Work smarter not harder”

“Do more with
less”

“Back to core responsibilities”

Dynamic roles

Increased use of Consultants

Increased Expectations

Path to Success

*Author map once,
publish once,
use anywhere,
any device*

Build Relevance

Follow industry best
management practices

One
map

Embed technology within workflow

Faster solution deployment

Empower the User

Cheaper/simpler solutions for maintenance

Leverage COTS

GIS is a Platform

Usage Patterns of GIS in Local Government

Knowledge
Workers



Executive
Access



Public
Engagement



Work
Anywhere

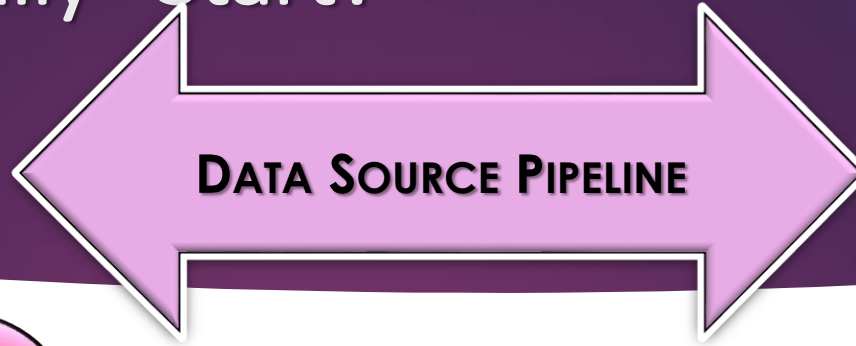


Enterprise
Integration



Web GIS

Where Do You “Really” Start?



DATA SOURCING

- Normalized Data Dictionary
- Indexing Conventions
- Data Owner/Producer
- Key Stakeholders
- Data Relationship/Overlap

TECHNOLOGY PLATFORM

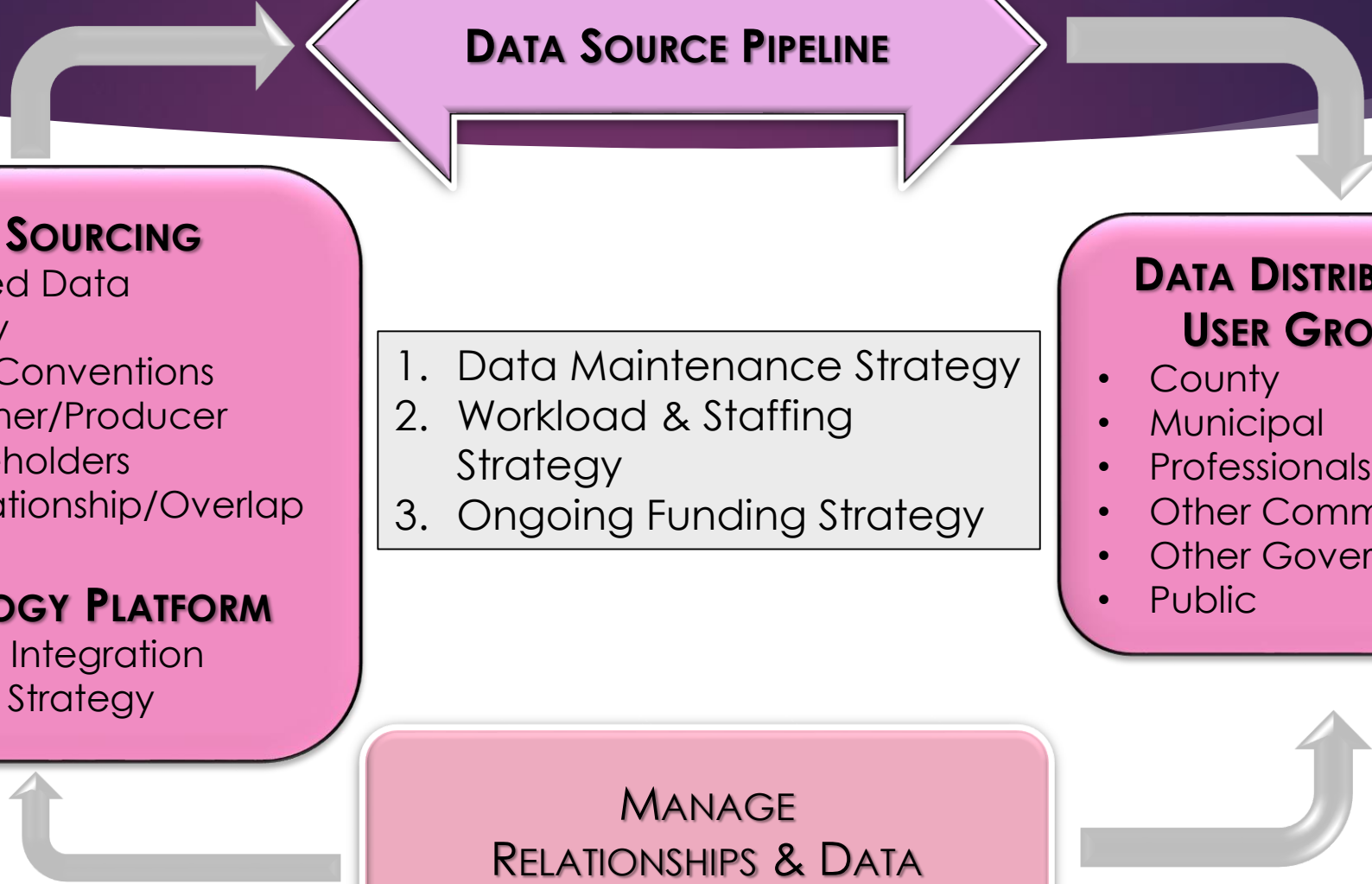
- Enterprise Integration
- Migration Strategy

1. Data Maintenance Strategy
2. Workload & Staffing Strategy
3. Ongoing Funding Strategy

**DATA DISTRIBUTION
USER GROUPS**

- County
- Municipal
- Professionals
- Other Commercial
- Other Government
- Public

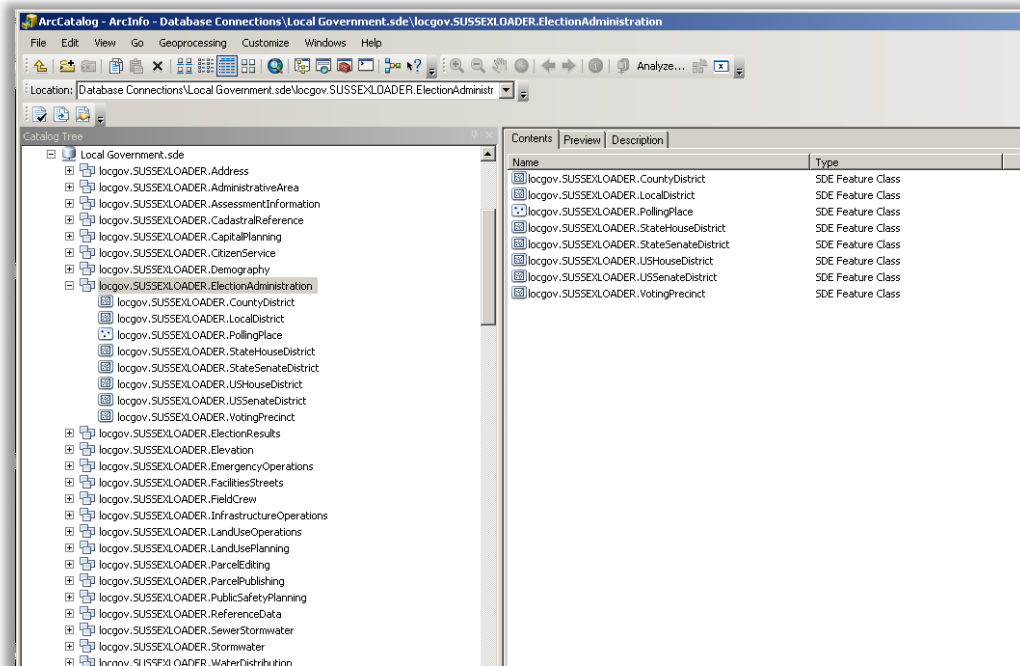
**MANAGE
RELATIONSHIPS & DATA**



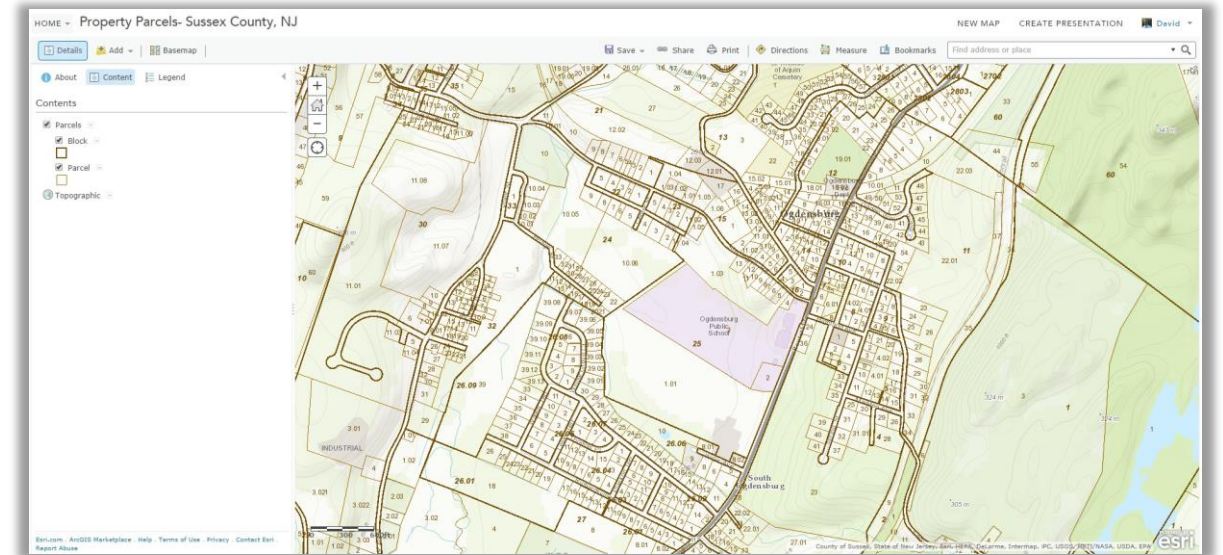
And Then...

Your Entitlements...

► Data / ArcGIS Server Services



► Web Map



ArcGIS Supporting Local Assets

inventory and management



Storm water

Catch basins



Traffic Control

Signs, Signals, etc.



Modes of Transportation

Sidewalks, Curbing, Ramps, etc.

In the News...

City to pay \$3M to settle lawsuit over sidewalk accident

Posted: May 16, 2012 6:32 PM EDT
Updated: Oct 03, 2012 6:32 PM EDT

By Morse Diggs, FOX 5 Reporter [CONNECT](#)

[Recommend](#) 27 [f](#) [t](#) [e](#) [m](#) [+](#) 8



Village Forcing Homeowners to Repair Broken Sidewalks

Initiative to ensure sidewalks in Ridgewood meet ADA compliance, according to village.

By James Kleimann (Patch Staff)
Updated July 24, 2012 at 7:27 pm [+](#) [P](#)



ArcGIS Online – Managing Assets

HOME GALLERY MAP GROUPS MY CONTENT MY ORGANIZATION

David

Civil Solutions
a division of *arh*

Featured Items

- Land Use Public Notification
Kearny Land Use Public Notification
- Show Us Your CS Mug Shot!
- TOWNSHIP OF WINSLOW
Winslow Economic Development Preview

Welcome to Civil Solutions on ArcGIS Online!

Civil Solutions is the Geospatial Services division of ARH Associates, Inc., a multi-disciplined civil engineering, surveying and planning company servicing the Mid-Atlantic market area.

Esri.com | ArcGIS Marketplace | Help | Terms of Use | Privacy | Contact Esri | Report Abuse

It's About Managing Content...

The screenshot displays the 'My Groups' page in a web application. At the top, there is a navigation bar with links for HOME, GALLERY, MAP, GROUPS, MY CONTENT, and MY ORGANIZATION. A user profile for 'David' and a search icon are also present. Below the navigation is a blue header with the 'My Groups' logo and a 'CREATE A GROUP' button. The main content area is divided into three columns. The left column, titled 'Show', lists filters for 'All My Groups', 'Owned by Me', 'Owned by Others', and 'With New Membership Requests'. The middle column, titled 'You are a member of 6 groups', lists six groups with their respective icons, descriptions, and creation dates. The right column, titled 'Find...', provides search filters for 'The organization's groups' and 'The organization's groups that are public', followed by a 'Featured Groups' section listing various community and organizational groups.

HOME GALLERY MAP GROUPS MY CONTENT MY ORGANIZATION David

My Groups

CREATE A GROUP

Show

- All My Groups
- Owned by Me
- Owned by Others
- With New Membership Requests

You are a member of 6 groups

- Bloomfield Office**
This group is for Bloomfield Office related maps, apps, etc.
created by dkunz_cs on June 23, 2014
Details
- Civil Solutions Demo Group**
A place for our clients to see things that we are involved with in other communities.
created by CivilAdmin on September 2, 2014
Details
- Civil Solutions Sand Box**
Civil Solutions projects and applications that are being tested, tweaked, and created.
created by MayaT on August 29, 2014
Details
- DKunz Testing Group**
Group containing testing maps and apps created by David Kunz
created by dkunz_cs on April 23, 2014
Details
- Internal**
A group for ARH/CS eyes only.
created by MayaT on August 28, 2014
Details
- Town of Kearny, NJ**
Informational resources and ideas to support the GIS implementation for the Town of Kearny, NJ
created by CivilAdmin on March 11, 2013
Details

Find...

- The organization's groups
- The organization's groups that are public

Featured Groups

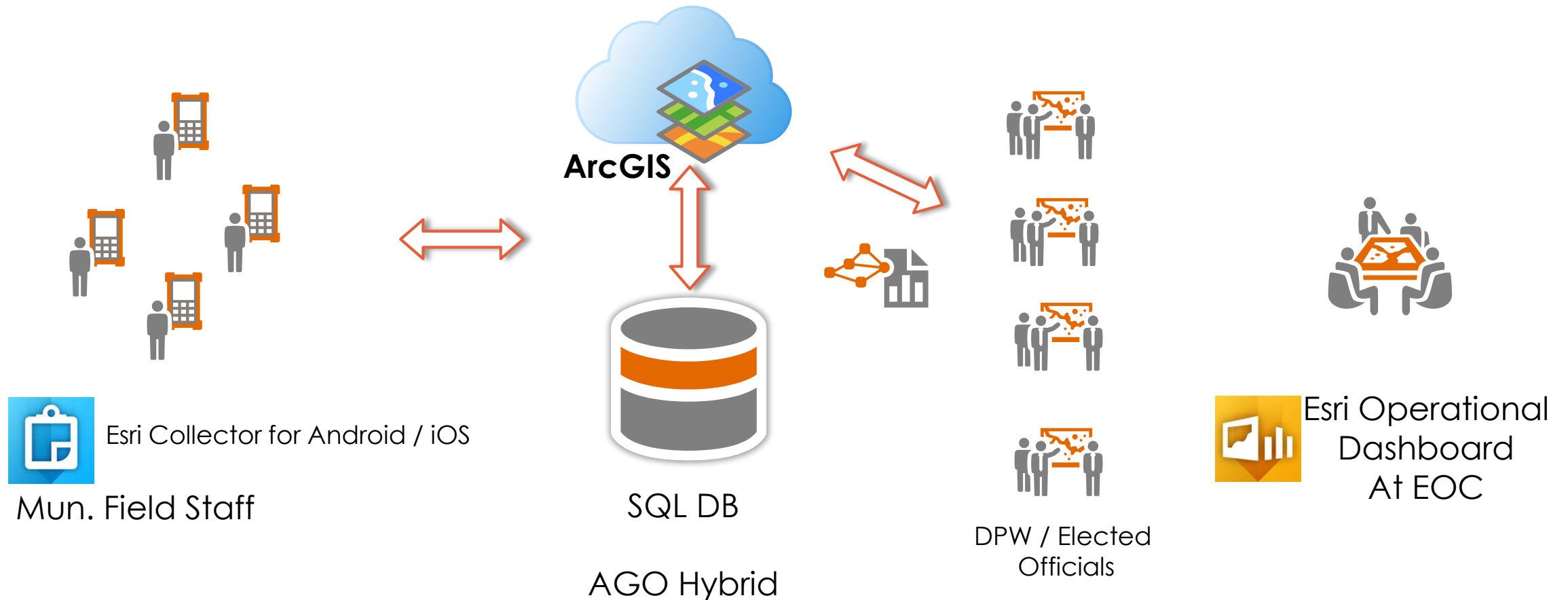
- National Maps for USA
- Esri Maps and Data
- Community Basemaps
- Landsat Community
- Web Application Templates
- ArcGIS for Local Government

Case Study – Managing Local Assets

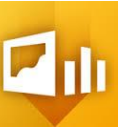
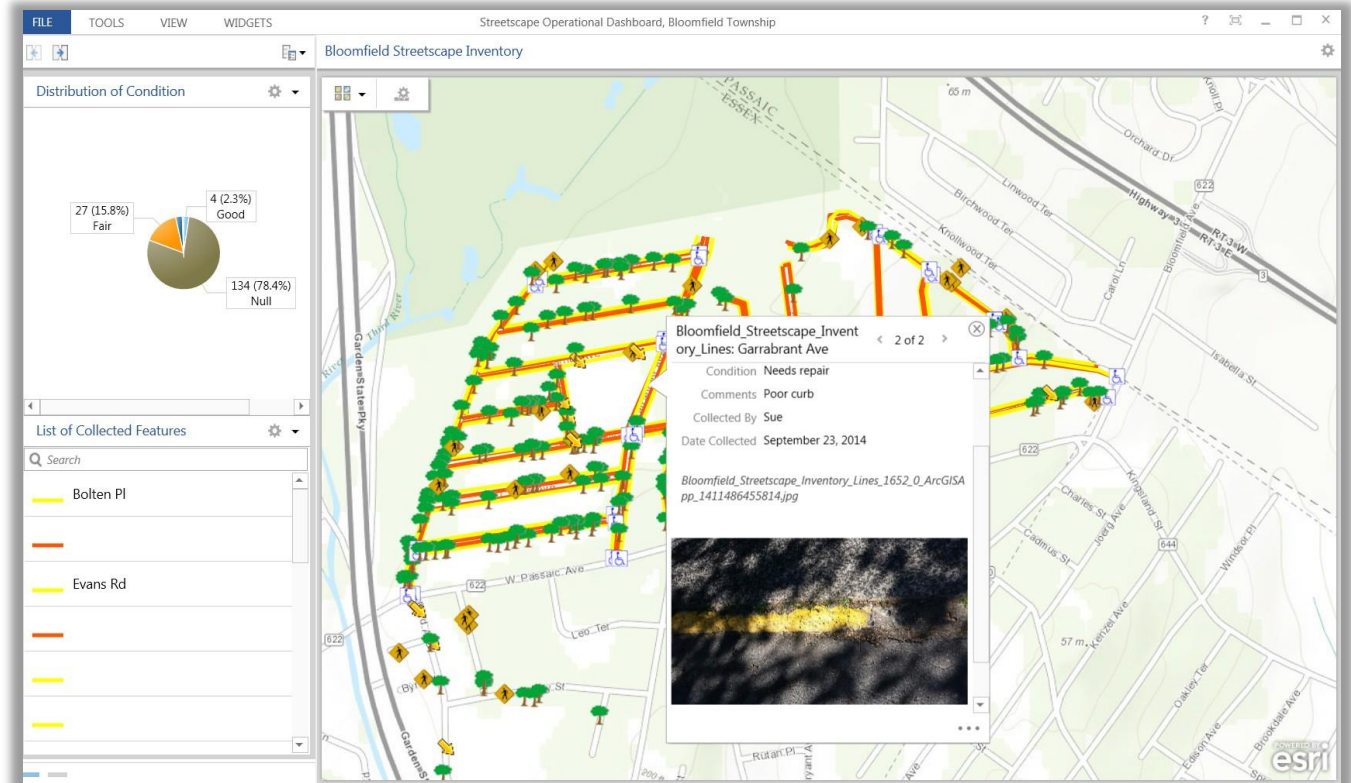


Sidewalk Safety

Empower the Users



GIS Solution - Empower the User



Deploy the
complete platform

Create a destination
with Portal

Configure first,
customize second

Create **useful**
information products

Light up everyone
in the organization

Thank you

David N. Kunz, GISP

Civil Solutions, a division of ARH

dkunz@arh-us.com

973.769.3636



ArcGIS Online
Specialty

